

DB2 for Linux, UNIX and Windows

DB2 installation on Windows



© 2013 IBM Corporation

This presentation describes various installation methods for DB2® version 9.1, 9.5, 9.7, and version 10.1 on a Windows® operating system. This presentation provides step by step instructions for installing DB2 on Windows using Setup.exe graphical user interface.

Download DB2 product

- DB2 product images can be downloaded
 - IBM Passport Advantage® website
http://www.ibm.com/software/howtobuy/passportadvantage/pao_customers.htm
 - Fix pack download website -> Server Fix Pack (contains both Base + fix)
<http://www-01.ibm.com/support/docview.wss?rs=71&uid=swg21321001>

The IBM Passport Advantage website houses DB2 installation images and permanent licenses for entitled clients. The URL to the website is displayed on this slide.

DB2 product can be downloaded as a server fix pack from the DB2 Fix Pack download website also. The URL to the website is also displayed on this slide.

The Server Fix Pack includes the base product and the fix code, hence, it is a full installation. It includes only the trial license. The permanent license for DB2 can be downloaded from the IBM Passport Advantage website only.

DB2 product – Fix Central (1 of 6)

- DB2 installation images available

- <http://www-01.ibm.com/support/docview.wss?uid=swg27007053>

Use this page to download a DB2 fix pack for the installed DB2 product you have. DB2 Fix Pack images are delivered from Fix Central. Fix Packs are cumulative. Included are links for DB2 Universal Fix Pack, DB2 Server Fix Pack, DB2 Connect, Net Search Extender, Spatial Extender, Query Patroller, DB2 Client, DB2 Run-Time Client, DB2 Wrappers, and all drivers (ODBC, CLI, JDBC, .NET). Click on the fix pack to view it.

DB2 Fix Packs:						
DB2 10.5	DB2 10.1	DB2 9.8	DB2 9.7	DB2 9.5	DB2 9.1	DB2 8.2
GA	Fix_Pack_2 Fix_Pack_1 GA	Fix_Pack_5 Fix_Pack_4 Fix_Pack_3	Fix_Pack_8 Fix_Pack_7 Fix_Pack_6 Fix_Pack_5 Fix_Pack_4 Fix_Pack_3a Fix_Pack_3 Fix_Pack_2 Fix_Pack_1 GA	Fix_Pack_10 Fix_Pack_9 Fix_Pack_8 Fix_Pack_7 Fix_Pack_6a Fix_Pack_5 Fix_Pack_4a Fix_Pack_4 Fix_Pack_3b Fix_Pack_3a Fix_Pack_3 Fix_Pack_2a Fix_Pack_2 Fix_Pack_1 GA	Fix_Pack_12 Fix_Pack_11 Fix_Pack_10 Fix_Pack_9 Fix_Pack_8 Fix_Pack_7a Fix_Pack_7 Fix_Pack_6a Fix_Pack_5 Fix_Pack_4a Fix_Pack_4 Fix_Pack_3a Fix_Pack_2a Fix_Pack_2 Fix_Pack_1	Fix_Pack_18 Fix_Pack_17a Fix_Pack_17 Fix_Pack_16 Fix_Pack_15 Fix_Pack_14 Fix_Pack_13 Fix_Pack_12 Fix_Pack_11 Fix_Pack_10 Fix_Pack_9a Fix_Pack_8a Fix_Pack_8 Fix_Pack_7

The DB2 LUW installation images can be downloaded from IBM Fix Central. Choose the appropriate DB2 version and fix pack and click the link.

DB2 product – Fix Central (2 of 6)

DB2 Version 9.7 Fix Pack 8 for Linux, UNIX, and Windows

Downloadable files

Abstract

Contains links to download DB2® 9.7 Fix Pack 8, servers, extenders, clients and drivers from Fix Central for AIX, HP-UX, Linux, Solaris, and Windows operating systems.

Download Description

Signature: 9.7.0.8	Build level: a130316	Release Date: 29.March.2013
--------------------	----------------------	-----------------------------

[Fix Pack Summary of changes](#)
[HIPER and Security APARs](#)
[DB2 9.7 APARs Fix List](#)
[Release Notes](#)

Download fix pack images per operating system

- ▶ AIX 64-bit, on pSeries
- ▶ HP-UX 64-bit, Itanium® based HP Integrity Series
- ▶ Linux 32-bit, x86-32 on AMD and Intel®
- ▶ Linux 64-bit, x86-64 on AMD64 and Intel EM64T
- ▶ Linux 64-bit, POWER™ (PowerPC®, iSeries®, pSeries®)
- ▶ Linux 64-bit, System z®, System z9® or zSeries®
- ▶ Solaris 64-bit, SPARC, on UltraSPARC or SPARC64
- ▶ Solaris 64-bit, x86-64, on Intel® 64 or AMD64
- ▶ Windows 32-bit, x86, on Intel® or AMD
- ▶ Windows 64-bit, x86, on AMD64 and Intel® EM64T

Choose the operating system of the server where you want to install by clicking the triangle near the operating system.

DB2 product – Fix Central (3 of 6)

▼ Windows 32-bit, x86, on Intel® or AMD

Windows 32-bit

(9.7.800.717 Windows 32-bit, x86)

PTF IP23427

Download FP8 for Windows 32-bit from Fix Central. {nt32}

🔗 [View all of the Fix Pack 8, DB2 fix packs for Windows 32-bit {nt32} in Fix Central](#)

🔗 [View all of the Fix Pack 8, Clients & Driver fix packs for Windows 32-bit {nt32} in Fix Central](#)

🔗 [Fix Pack description information.](#)

Servers

🔗 [DB2 Universal Fix Pack](#)

🔗 [DB2 Server Fix Pack](#)

🔗 [DB2 Connect Personal Edition](#)

Query Patroller

🔗 [DB2 Query Patroller](#)

Extenders

🔗 [DB2 Net Search Extender](#)

🔗 [DB2 Spatial Extender](#)

Clients

🔗 [IBM Data Server Client](#)

🔗 [IBM Data Server Runtime Client](#)

🔗 [IBM Data Server Runtime Client Merge Modules](#)

Drivers

🔗 [IBM Data Server Driver Package](#)

🔗 [IBM Data Server Driver Merge Modules](#)

🔗 [IBM Data Server Driver for ODBC and CLI \(32-bit\)](#)

🔗 [IBM Data Server Driver for JDBC and SQLJ](#)

Visual Studio Add-In

🔗 [IBM Database Add-Ins for Visual Studio](#)

Wrappers

🔗 [Relational Wrappers](#)

🔗 [Non-Relational Wrappers](#)

Once you click the triangle, all the available DB2 products for that operating system are listed. In the screen capture displayed on this slide, DB2 products for Windows 32 bit are listed. Click the DB2 Server Fix Pack which includes the DB2 base product and the fix code, which is a full DB2 product. Once you click that, you are redirected to Fix Central.

DB2 product – Fix Central (4 of 6)

← IBM Support Portal

Fix Central

- Inventory upload
- Supported products
- Enhancements
- Help
- Feedback

→ Go to Fix Central mobile

Download options

Information Management, DB2 (9.7.*, Windows 32-bit, x86)

Select download options

Select the download method to be used to download fixes.

Download using Download Director (requires Java enabled browser) [What is this?](#)

Download using your browser (HTTP)

Preferred language for downloaded files:
(If selected language is not available, a default language will be displayed.)

US English

CAUTION: Do not assume that Fix Central will show you all the prerequisites you need. Be sure to always click the **More information** link for additional prerequisite and other important fix information. Click [here](#) for an explanation of what prerequisites you can expect Fix Central to provide.

Include prerequisites and co-requisite fixes (you can select the ones you need later)

Continue **Back**

6 DB2 installation on Windows © 2013 IBM Corporation

After signing in with your IBM ID, options are provided to download using the Download Director or HTTP. Choose your preferred method to download and save the image to the server.

Download files using HTTP

Information Management, DB2 (9.7.*, Windows 32-bit, x86)

Download files using your web browser

Click the download link next to each file to download it.

Order number: 93073938

Total size: 568.41 MB

fix pack: **DB2-nt32-server-9.7.800.717-FP008**

[More Information](#)

DB2 9.7 Fix Pack 8 for Windows/x86-32 (32 bit), DB2 Server Fix Pack

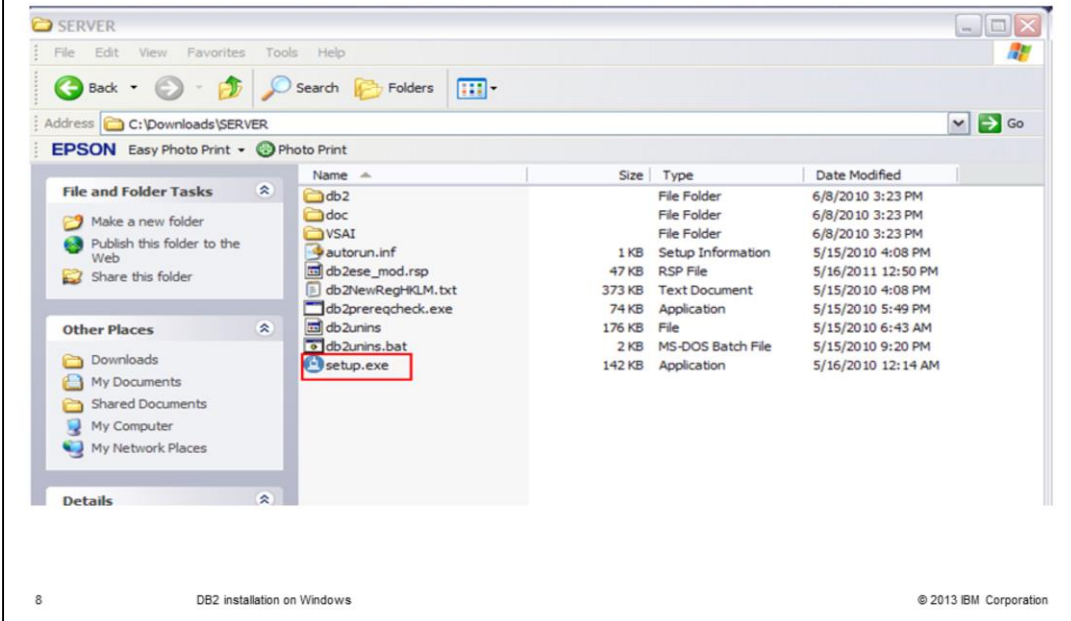
The following files implement this fix.

[v9.7fp8_nt32_server.exe \(568.41 MB\)](#)

Back

The screen capture displayed on this slide has DB2 version 9.7, fix pack 8 chosen to download using HTTP.

New DB2 installation using setup.exe



8

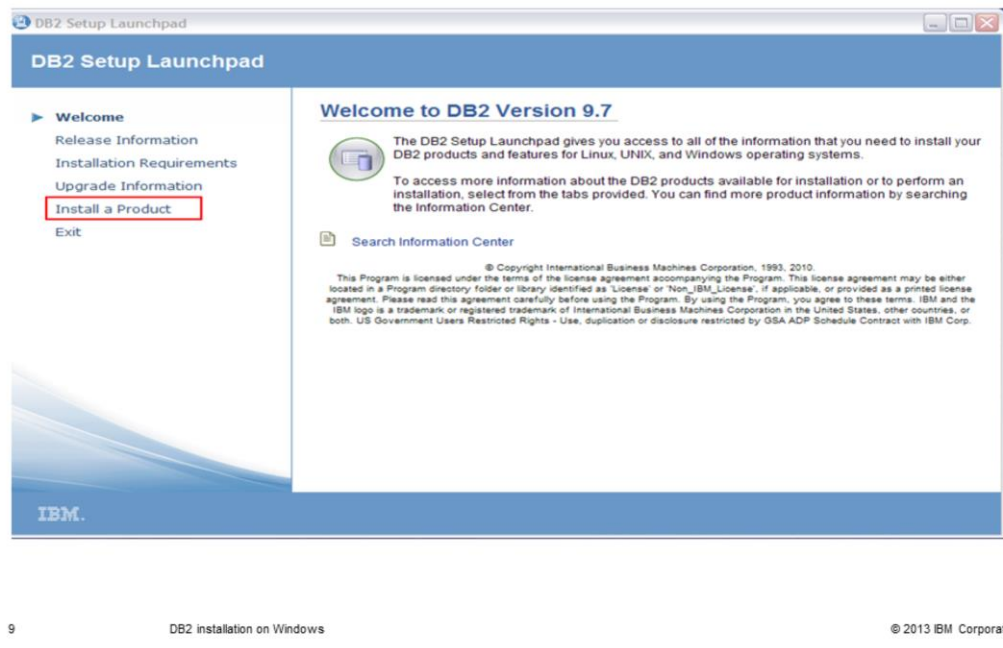
DB2 installation on Windows

© 2013 IBM Corporation

Once the image is downloaded, extract the image to any valid directory locally on the Windows server. The extracted image has the setup.exe. Double click setup.exe to launch the launchpad.

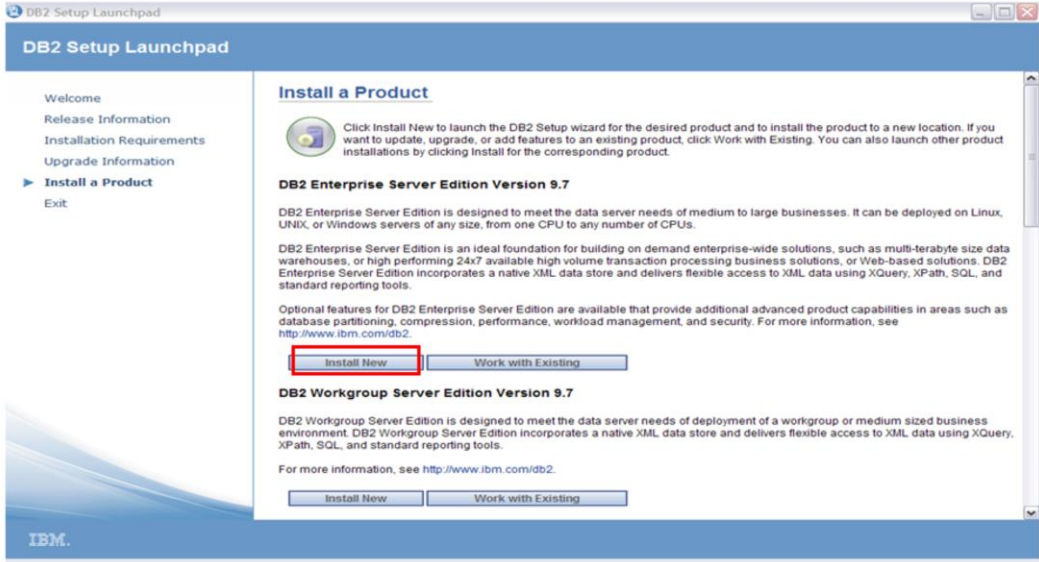
If the operating system of the server is Windows 2008 and Windows Vista or higher, right click Setup.exe and choose “Run as administrator” explicitly to prevent any user access control issues.

DB2 installation launchpad (1 of 2)



Choose the Install a Product link on the left panel.

DB2 installation launchpad (2 of 2)



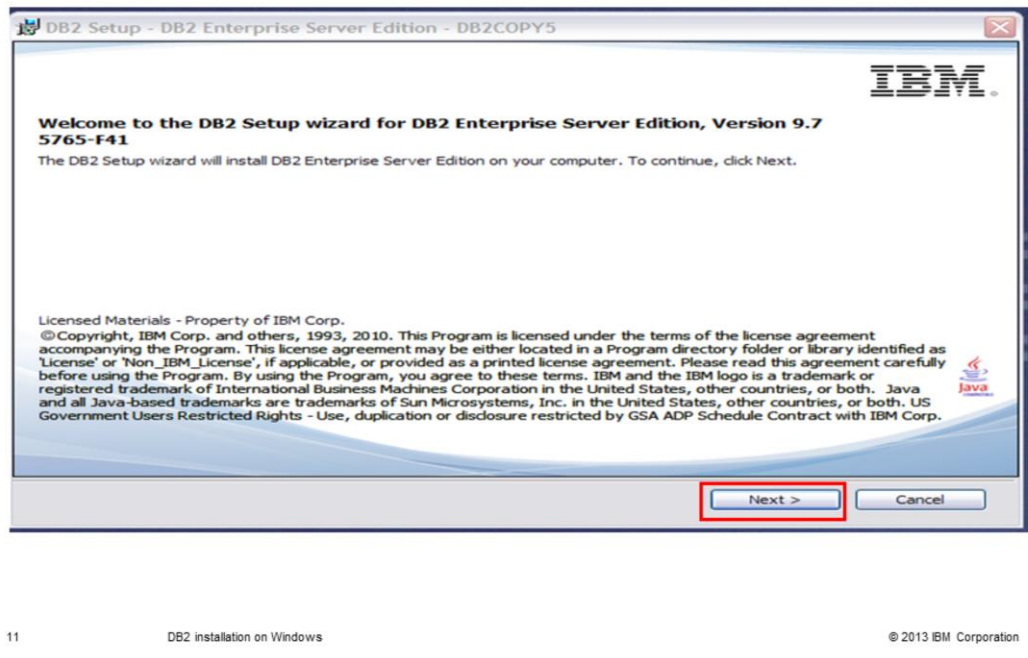
The screenshot shows the 'DB2 Setup Launchpad' window. On the left is a navigation menu with options: Welcome, Release Information, Installation Requirements, Upgrade Information, **Install a Product** (highlighted with a blue arrow), and Exit. The main content area is titled 'Install a Product' and contains two product sections:

- DB2 Enterprise Server Edition Version 9.7**: Includes a description of the product, its capabilities on various operating systems, and optional features. Below the text are two buttons: 'Install New' (highlighted with a red box) and 'Work with Existing'.
- DB2 Workgroup Server Edition Version 9.7**: Includes a description of the product and its capabilities. Below the text are two buttons: 'Install New' and 'Work with Existing'.

The IBM logo is visible in the bottom left corner of the window. At the bottom of the overall image, there is a footer with the page number '10', the text 'DB2 installation on Windows', and the copyright notice '© 2013 IBM Corporation'.

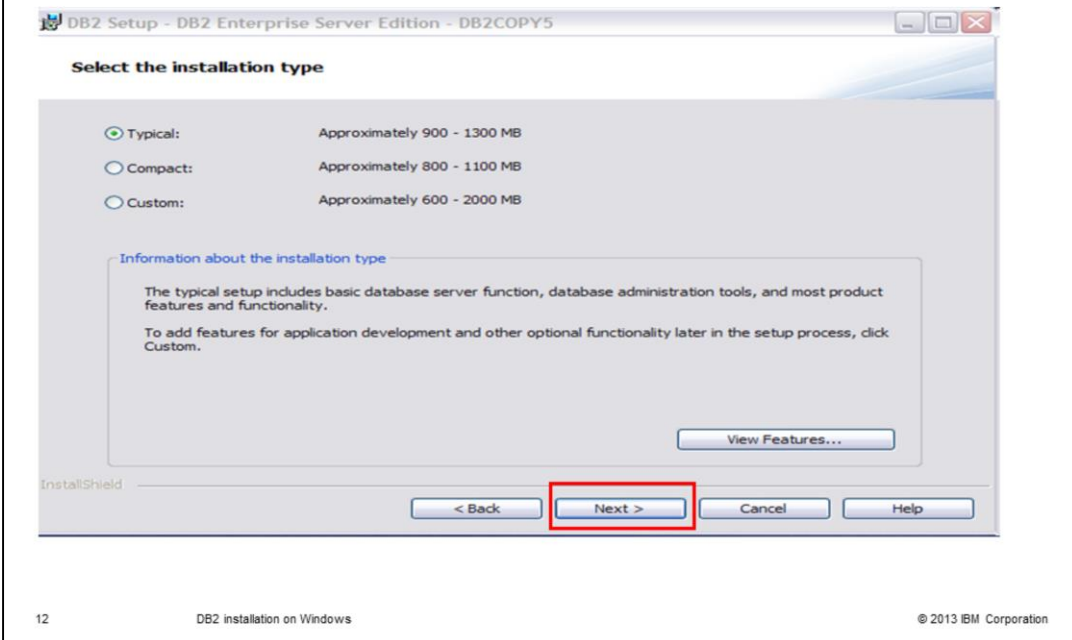
Choose the DB2 product editions you want to install and click the Install New button.

DB2 installation wizard (1 of 9)



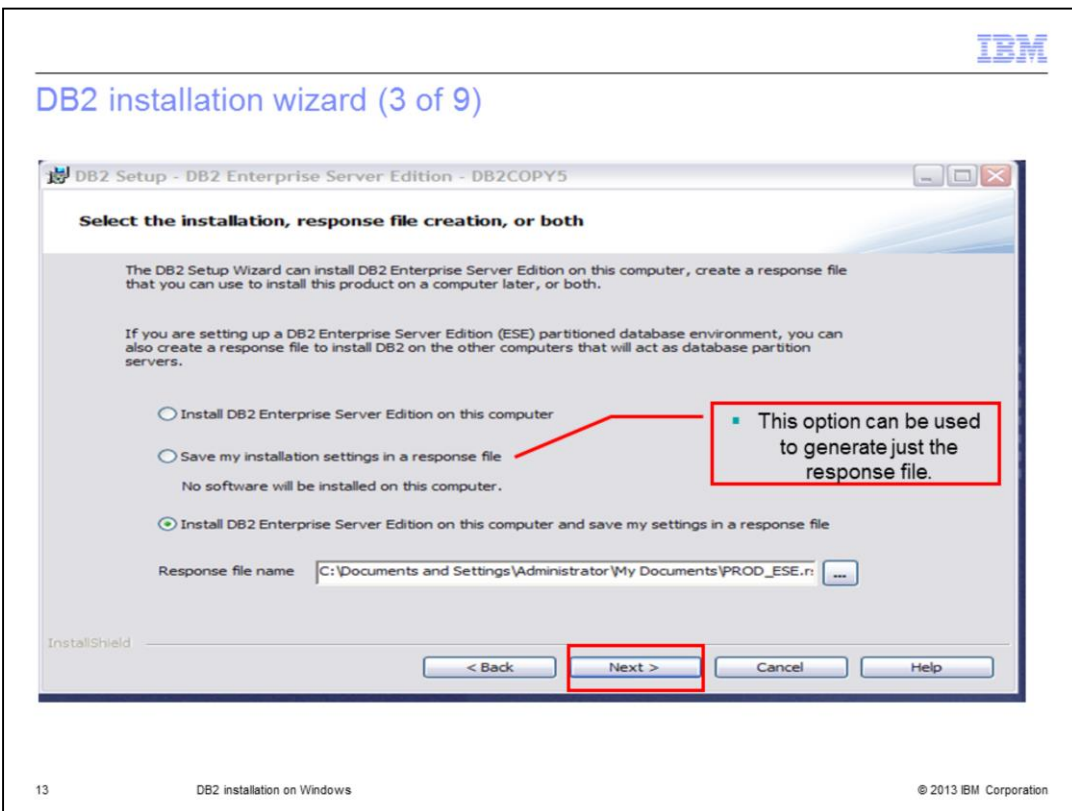
Once you choose the Install New option, the installation Wizard starts. Click Next.

DB2 installation wizard (2 of 9)



Choose your preferred installation type. Choose Typical if you want to install all the components of the DB2 server. This is the default and recommended installation method. If you choose Compact, only base client support and JDBC and ODBC support features are installed. If you choose Custom, you can choose the specific DB2 features and components you want to install from the installation image. Then, click Next.

DB2 installation wizard (3 of 9)



The next screen has options to create a response file of the current DB2 installation.

A response file is an English-only text file that contains setup and configuration information. A response file specifies configuration and setup parameters and the products and components to install.

Unlike the DB2 Setup wizard, a DB2 response file installation lets you install DB2 products without any user interaction. This method is useful not only for large-scale deployments of DB2 products, but also for embedding the DB2 installation process transparently inside your customized installation and configuration procedure.

The first option is to install just DB2 on this computer only, no response file is created.

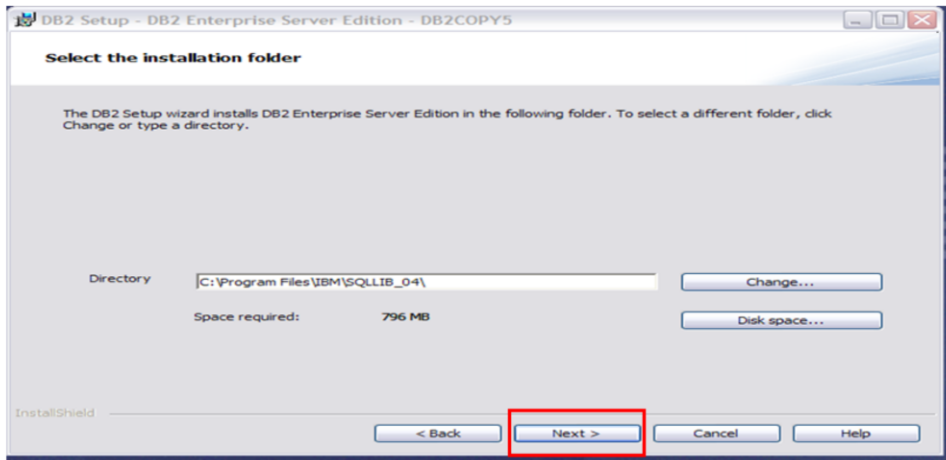
The second option is to generate just the response file that you can use to install the same product on different computers later. No DB2 product is installed on that server.

The third option is to install DB2 on this computer and to generate a response file to install DB2 with the same configuration on other computers. This is the default option.

You can choose your preferred option.

DB2 installation wizard (4 of 9)

- Choose installation path



14

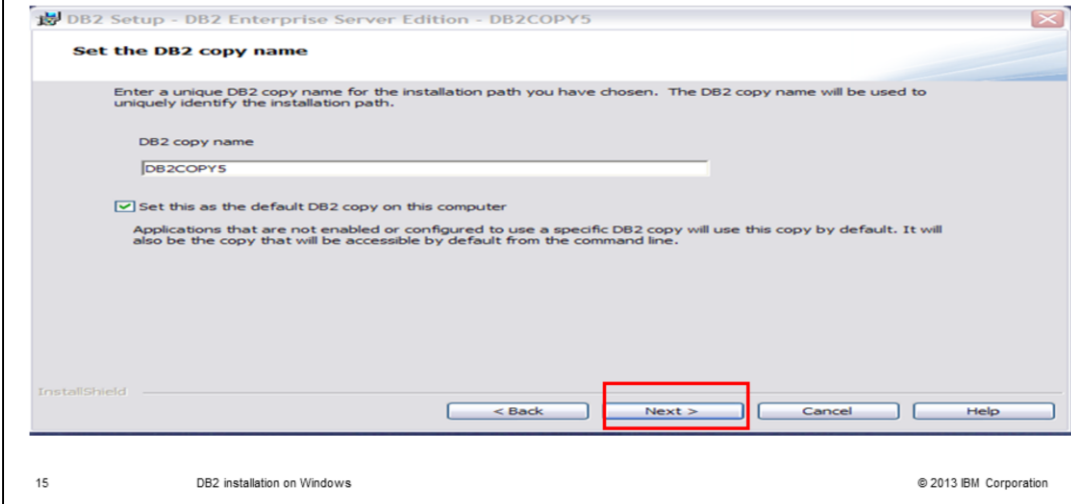
DB2 installation on Windows

© 2013 IBM Corporation

In the next screen, choose the installation path of your choice. The path is automatically created and DB2 files are created under that path.

DB2 installation wizard (5 of 9)

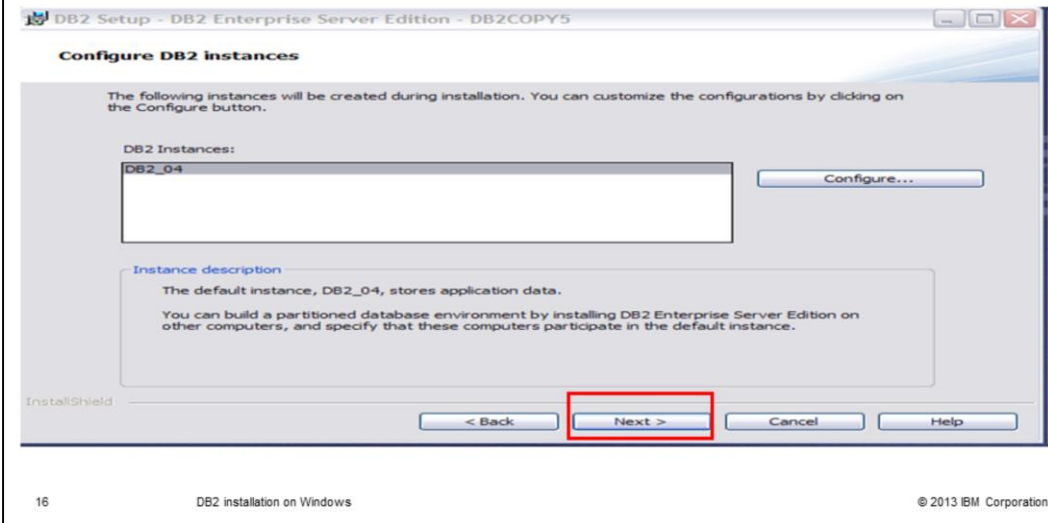
- Set DB2 copy name



Specify the unique copy name of your choice. The DB2 copy name is used to uniquely identify the installation path. Click the check box to set the copy as the default DB2 copy on this computer. The default DB2 copy is the DB2 copy that is used by applications that access DB2 database products through the default interface. Click Next.

DB2 installation wizard (6 of 9)

- Configure DB2 instance



The instance name is generated by default. You can configure the port number the instance listens to by clicking the 'Configure' button. Click Next.

DB2 installation wizard (7 of 9)

- DB2 instance owner account

DB2 Setup - DB2 Enterprise Server Edition - DB2COPY5

Set user information for the default DB2 instance

Specify the required user information that the DB2 instance, DB2_04, will use to log on to your system. The DB2 service will be run under the account name provided. If you plan on supporting domain users for DB2 databases, you need to provide a domain account.

User information

Domain	None - use local user account
User name	db2admin
Password	*****
Confirm password	*****

Use the same account for the remaining DB2 services

InstallShield

< Back **Next >** Cancel Help

17

DB2 installation on Windows

© 2013 IBM Corporation

On Windows operating systems, each DB2 instance runs as a DB2 service and the instance owner is the user ID running the DB2 instance service.

Specify the user account you want to have as the instance owner. The user account must belong to the *Administrators* group on the computer where you will perform the installation.

A local or domain user account is required for the DB2 instance because the instance is run as a Windows service and the service is executing in the security context of the user account. When you use a domain user account to perform a database operation against a DB2 instance, the DB2 service needs to access the domain to authenticate and search for the user's group membership. By default, a domain will only allow a domain user to query the domain and hence, the DB2 service needs to be running in the security context of a domain user. An error will occur if you use a domain user account to perform a database operation against a DB2 service running with either a Local user account or a LocalSystem account.

You can create the DB2 instance user account before installing DB2 or you can have the DB2 Setup wizard create it for you. If you want to have the DB2 Setup wizard create a new domain user account, the user account you use to perform the installation must have authority to create domain user accounts. This account is granted user rights to act as part of the operating system, debug programs, create a token object and increase quotas. Other user rights include lock pages in memory, log on as a service, and replace a process level token.

Click Next.

DB2 installation wizard (8 of 9)

- Operating system security for DB2 objects



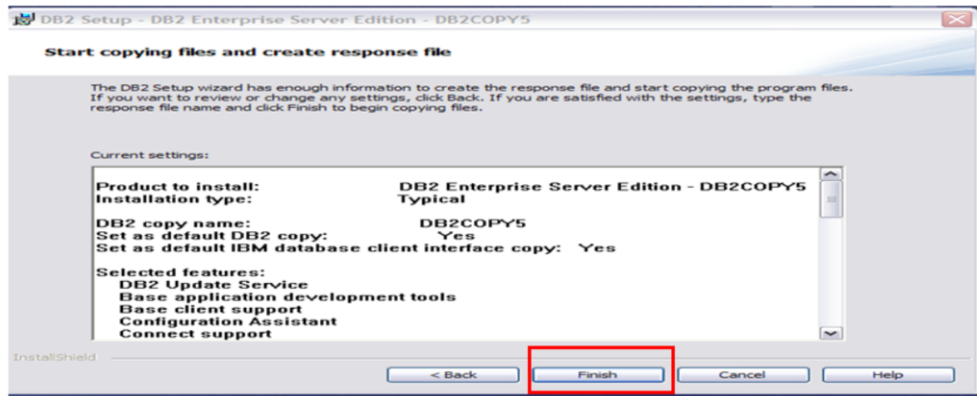
Starting in DB2 version 8.2, DB2 introduced a new feature that secures access to DB2 resources by exploiting the security features in the NTFS file system and other security features of the Windows operating system. It does that mainly by modifying the Access Control Lists of DB2 files, registry entries and run-time memory objects.

During a typical installation of DB2 on Windows, extended security is enabled by default. DB2 will by default create the DB2ADMNS and DB2USERS groups. If there is a conflict with existing group names, you are prompted to change the group names. If required, you can specify your own values.

Only users who belong to one of these groups have access to the DB2 system files, registry keys, network shares, and DB2 services on the local machine where DB2 runs. If you want to disable the enhanced Windows security, you can deselect the Enable operating system security check box on the Enable operating system security for DB2 objects panel.

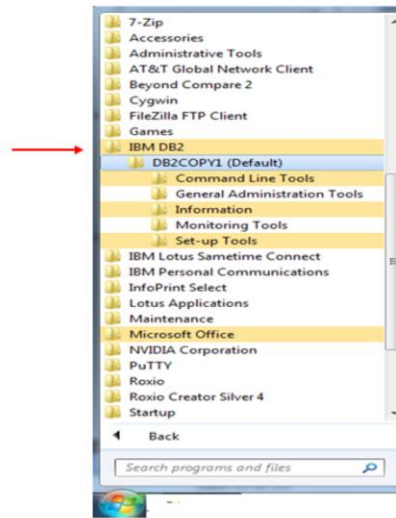
DB2 installation wizard (9 of 9)

▪ Current setting summary



The summary of the configuration of DB2 to be installed is listed. Review the features to be installed and click Finish to complete the installation. This will install the new DB2 copy on the server.

DB2 installation



Once the installation is complete, IBM DB2 and the DB2 Copy name is added to the Windows Start menu. Using the menu, all DB2 components such as DB2 Command Window and other tools can be accessed.

Trademarks, disclaimer, and copyright information

IBM, the IBM logo, ibm.com, DB2, and Passport Advantage are trademarks or registered trademarks of International Business Machines Corp., registered in many jurisdictions worldwide. Other product and service names might be trademarks of IBM or other companies. A current list of other IBM trademarks is available on the web at "[Copyright and trademark information](http://www.ibm.com/legal/copytrade.shtml)" at <http://www.ibm.com/legal/copytrade.shtml>

Linux is a registered trademark of Linus Torvalds in the United States, other countries, or both.

Windows, and the Windows logo are registered trademarks of Microsoft Corporation in the United States, other countries, or both.

UNIX is a registered trademark of The Open Group in the United States and other countries.

Other company, product, or service names may be trademarks or service marks of others.

THE INFORMATION CONTAINED IN THIS PRESENTATION IS PROVIDED FOR INFORMATIONAL PURPOSES ONLY. WHILE EFFORTS WERE MADE TO VERIFY THE COMPLETENESS AND ACCURACY OF THE INFORMATION CONTAINED IN THIS PRESENTATION, IT IS PROVIDED "AS IS" WITHOUT WARRANTY OF ANY KIND, EXPRESS OR IMPLIED. IN ADDITION, THIS INFORMATION IS BASED ON IBM'S CURRENT PRODUCT PLANS AND STRATEGY, WHICH ARE SUBJECT TO CHANGE BY IBM WITHOUT NOTICE. IBM SHALL NOT BE RESPONSIBLE FOR ANY DAMAGES ARISING OUT OF THE USE OF, OR OTHERWISE RELATED TO, THIS PRESENTATION OR ANY OTHER DOCUMENTATION. NOTHING CONTAINED IN THIS PRESENTATION IS INTENDED TO, NOR SHALL HAVE THE EFFECT OF, CREATING ANY WARRANTIES OR REPRESENTATIONS FROM IBM (OR ITS SUPPLIERS OR LICENSORS), OR ALTERING THE TERMS AND CONDITIONS OF ANY AGREEMENT OR LICENSE GOVERNING THE USE OF IBM PRODUCTS OR SOFTWARE.

© Copyright International Business Machines Corporation 2013. All rights reserved.