

# DB2 Linux, UNIX and Windows

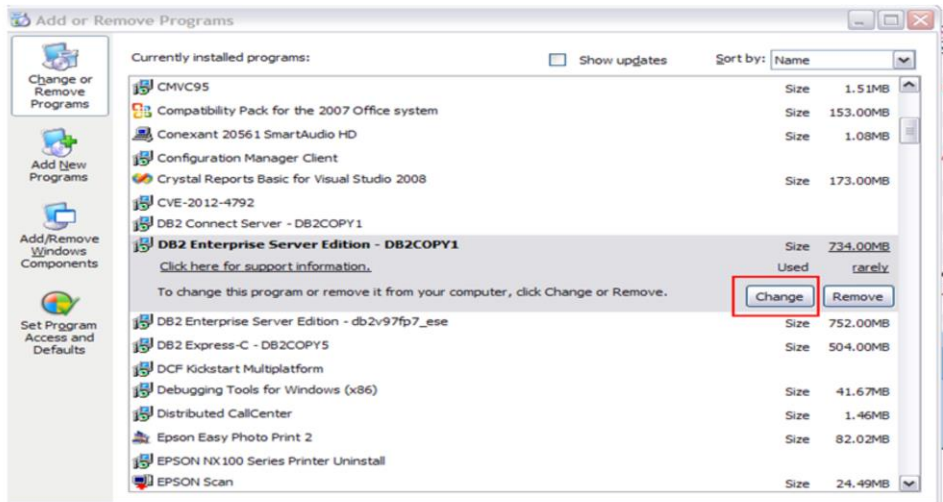
Refresh, modify, or repair an installation



© 2013 IBM Corporation

This presentation describes how to refresh, modify or repair the current DB2® Linux®, UNIX®, and Windows®, referred to as DB2 LUW, version 9.1, 9.5, 9.7, and version 10.1 product installation.

## Control panel



2

Refresh, modify, or repair an installation

© 2013 IBM Corporation

To add or remove DB2 components, or repair corrupted or missing files, launch the DB2 setup wizard from the installation image of the same DB2 product, at the same release level or, launch from Add/Remove Programs wizard in the Windows Control Panel. This is a benefit of using Windows Installer as the installation engine. You need not uninstall the DB2 product and then install it again in order to add some new components, or remove some components you installed earlier.

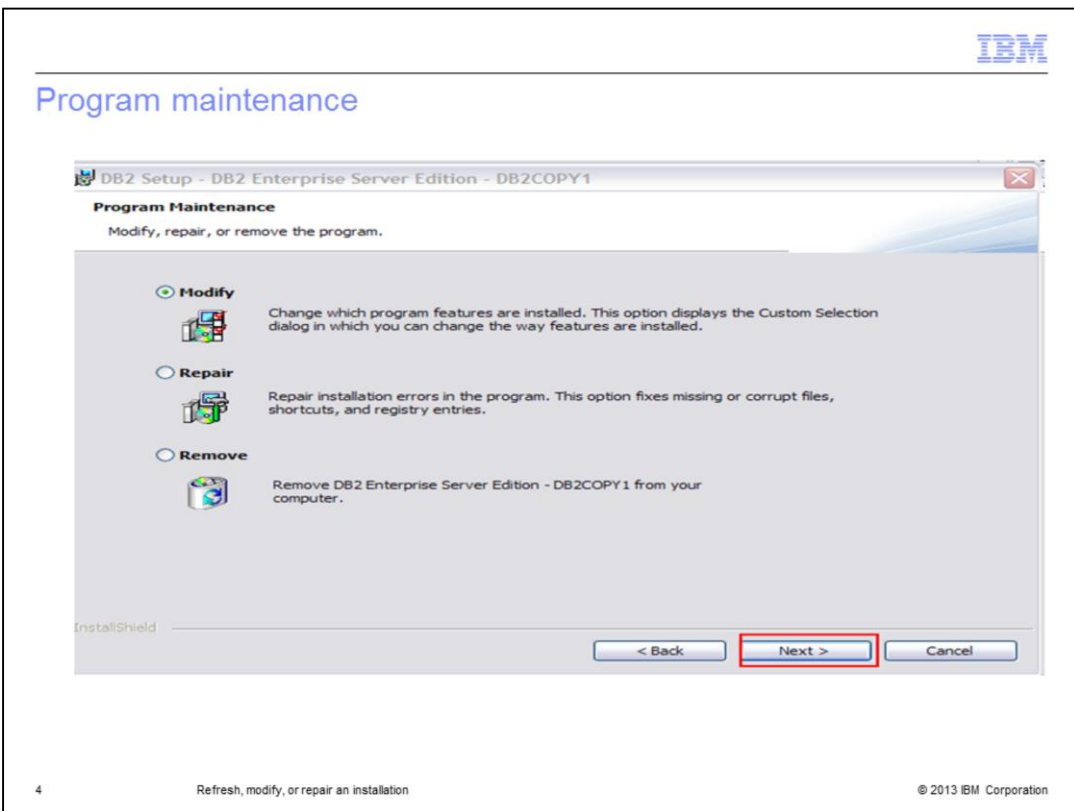
In the example displayed on this slide, it is being launched from the Windows control panel. Choose the DB2 copy you want to modify and click Change.

## DB2 Setup wizard



The DB2 Setup wizard opens once you click CHANGE in Add/Remove programs. Click Next to continue.

## Program maintenance

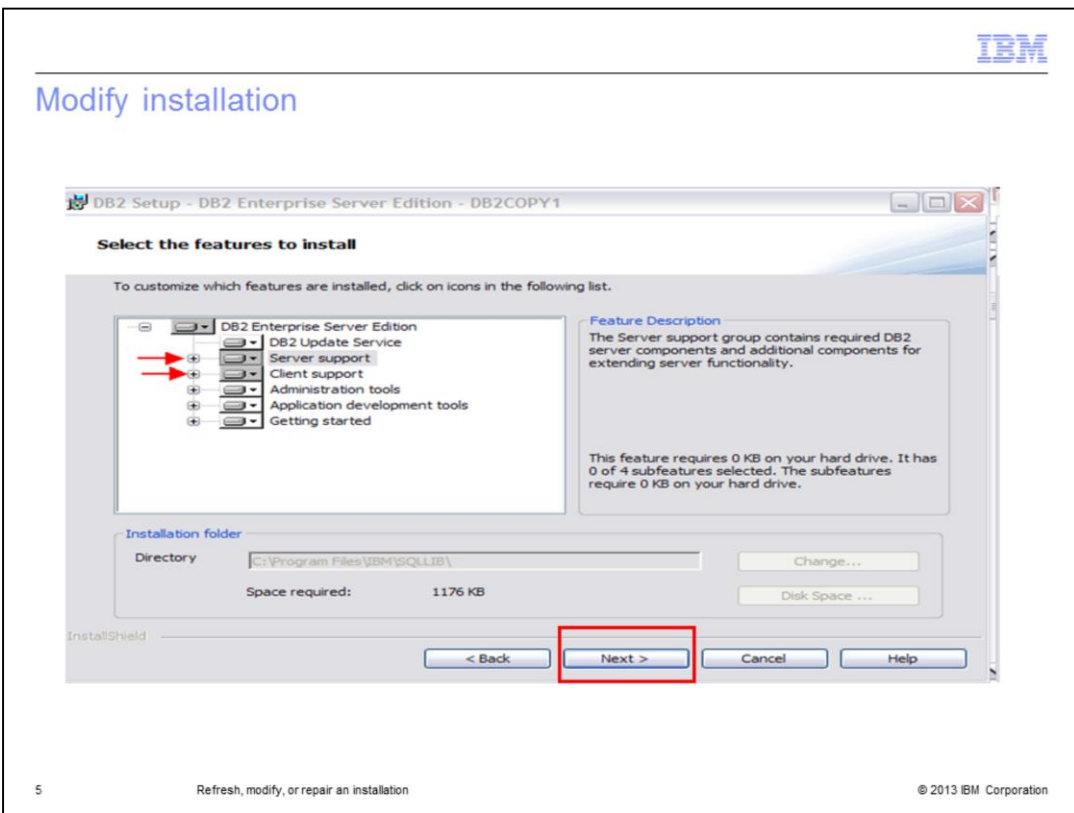


In the next panel, there are three options to choose from. The first one is the MODIFY option. This option is to change the program features already installed or to add new features to the existing DB2 installation.

The second option is to REPAIR the existing DB2 installation. This option refreshes the current DB2 installation by fixing any missing files or corrupted files.

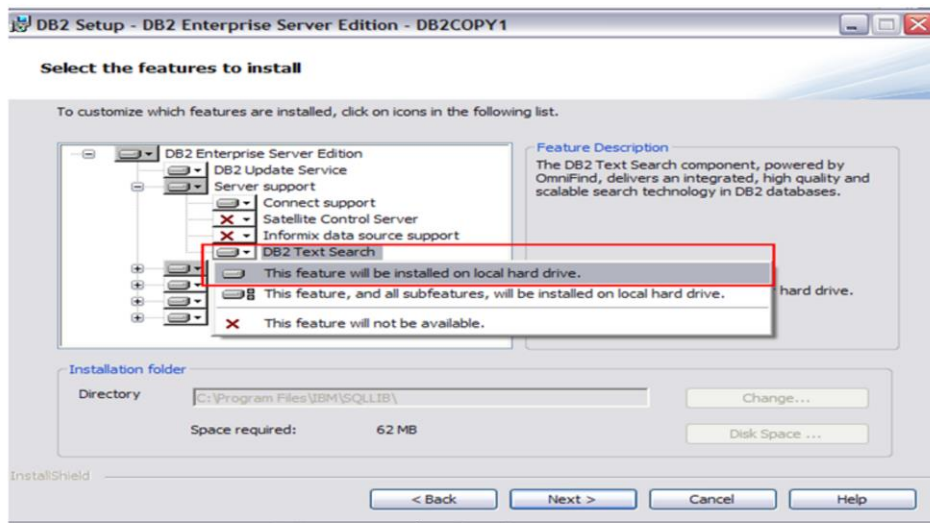
The third option is to Remove or uninstall the current DB2 installation.

## Modify installation



To modify the existing DB2 installation, first choose the Modify option and click Next. The next panel opens a window with all the current DB2 features already installed and the ones available for installation. The features available to install are shaded grey. In the example displayed on this slide, there are some features available in Server Support and Client Support. Click the plus sign near the option to see the available features.

## Select features to install



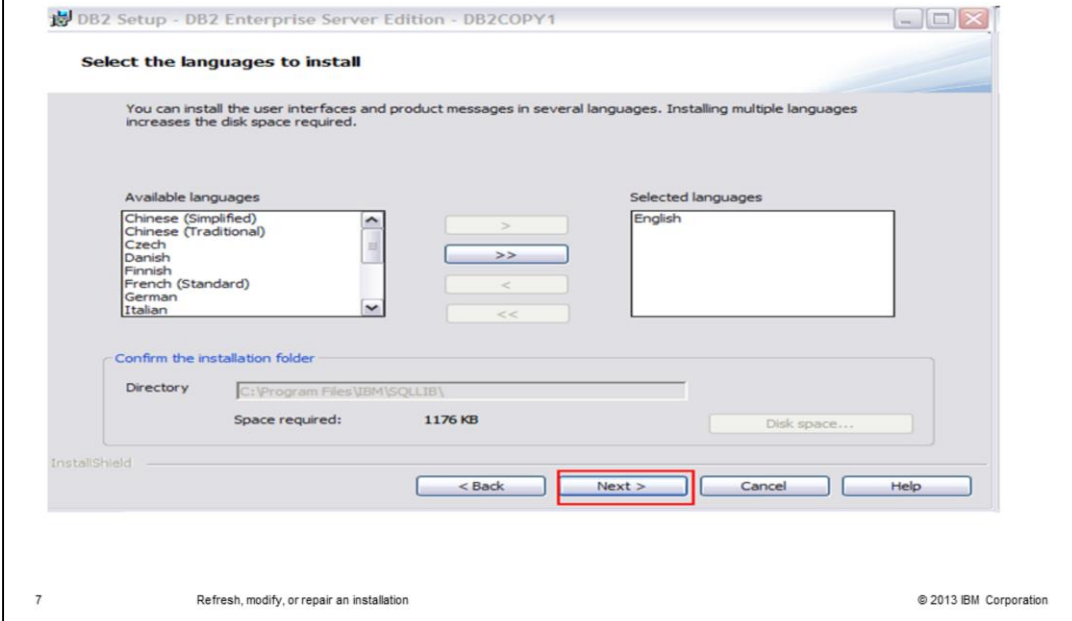
6

Refresh, modify, or repair an installation

© 2013 IBM Corporation

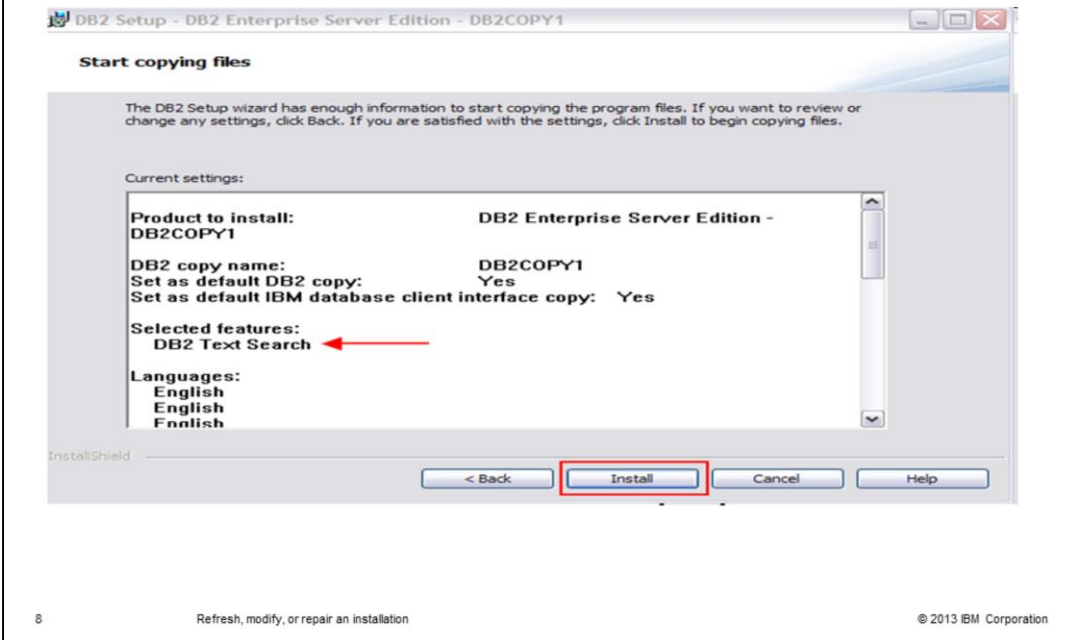
Right click the feature you want to install and choose the “This Feature will be installed on local hard drive” option. In the example displayed on this slide, the DB2 Text Search feature is chosen. Click Next.

## Languages to install



Follow the wizard and choose the language to install. Click Next to continue.

## Current settings



The summary of current settings displays the feature to be installed. In this case, it shows the DB2 Text Search. Click Install to complete the installation. These are the steps to follow to modify, repair or refresh the current DB2 installation.



## Trademarks, disclaimer, and copyright information

IBM, the IBM logo, ibm.com, and DB2 are trademarks or registered trademarks of International Business Machines Corp., registered in many jurisdictions worldwide. Other product and service names might be trademarks of IBM or other companies. A current list of other IBM trademarks is available on the web at "[Copyright and trademark information](http://www.ibm.com/legal/copytrade.shtml)" at <http://www.ibm.com/legal/copytrade.shtml>

Linux is a registered trademark of Linus Torvalds in the United States, other countries, or both.

Windows, and the Windows logo are registered trademarks of Microsoft Corporation in the United States, other countries, or both.

UNIX is a registered trademark of The Open Group in the United States and other countries.

Other company, product, or service names may be trademarks or service marks of others.

THE INFORMATION CONTAINED IN THIS PRESENTATION IS PROVIDED FOR INFORMATIONAL PURPOSES ONLY. WHILE EFFORTS WERE MADE TO VERIFY THE COMPLETENESS AND ACCURACY OF THE INFORMATION CONTAINED IN THIS PRESENTATION, IT IS PROVIDED "AS IS" WITHOUT WARRANTY OF ANY KIND, EXPRESS OR IMPLIED. IN ADDITION, THIS INFORMATION IS BASED ON IBM'S CURRENT PRODUCT PLANS AND STRATEGY, WHICH ARE SUBJECT TO CHANGE BY IBM WITHOUT NOTICE. IBM SHALL NOT BE RESPONSIBLE FOR ANY DAMAGES ARISING OUT OF THE USE OF, OR OTHERWISE RELATED TO, THIS PRESENTATION OR ANY OTHER DOCUMENTATION. NOTHING CONTAINED IN THIS PRESENTATION IS INTENDED TO, NOR SHALL HAVE THE EFFECT OF, CREATING ANY WARRANTIES OR REPRESENTATIONS FROM IBM (OR ITS SUPPLIERS OR LICENSORS), OR ALTERING THE TERMS AND CONDITIONS OF ANY AGREEMENT OR LICENSE GOVERNING THE USE OF IBM PRODUCTS OR SOFTWARE.

© Copyright International Business Machines Corporation 2013. All rights reserved.