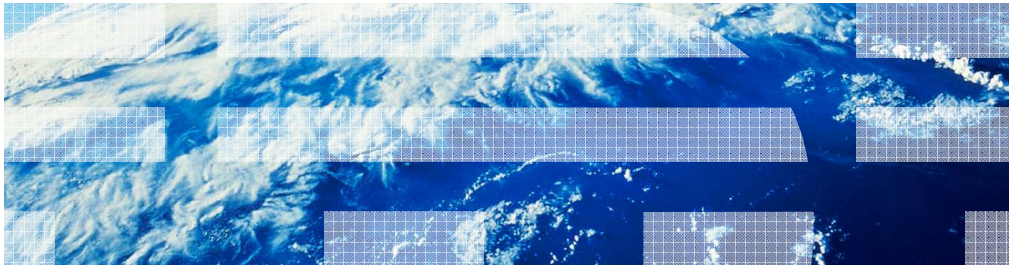


Communications Server for Data Center Deployment

Remote Application Programming Interface (API) Client configuration



© 2012 IBM Corporation

This presentation provides an overview of Remote API Client configuration for Windows®, AIX®, and Linux®.

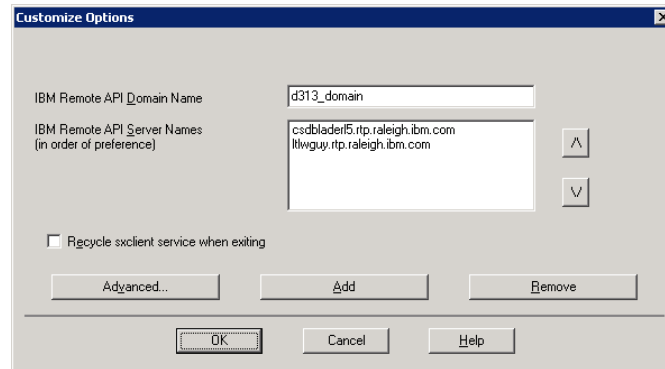
Required information

- Client/Server domain:
This is the domain name defined on the server
- List of servers:
This is a list of host names of all the servers the client will connect to

Before you begin the configuration, you need to collect some information. First, you need the client/server domain as it is defined on the server. And second, you need the list of host names for all the servers the client will connect to.

Windows client configuration utility

- Start -> Programs -> IBM Remote API Client -> Configuration Utility



- Enter the client/server domain name
- Click "Add" to enter servers the client will connect to

On the Windows client, launch the configuration utility by going through the Start menu to Programs, IBM Remote API Client, Configuration Utility. You will see a new window titled Customize Options. Enter the client/server domain name in the first field. Then click the Add button to bring up a dialog window where you can enter a server name to be added to the list of servers that the client will connect to.

Windows client configuration during installation

To configure during installation of the client, issue this command:

```
setup -id313_domain -ucsdblader15.rtp.raleigh.ibm.com  
-ultlwguy.rtp.raleigh.ibm.com -b0 -j20 -f2C:\instrapi.log -y -accept -s
```

- Change the '-i' parameter to match the domain in your network
- Change the '-u' parameters to match the host name of the server
- Changed the '-j' parameter to specify the reconnect timeout for your client

Alternatively, you can enter the configuration information during the client installation by specifying options on the setup command.

AIX or Linux client configuration

- Clients use a flat ASCII file for configuration. For details, see chapter 10 of the Administration Guide in the product library at <http://www.ibm.com/support/docview.wss?uid=swg27019458>
- The configuration file is `sna_clnt.net` which is located in `/etc/sna` (AIX) or `/etc/opt/ibm/sna` (Linux)
- Example `sna_clnt.net`:
 - `domain=d313_domain`
 - `server_lost_timeout=20`
 - `csdblader15.rtp.raleigh.ibm.com`
 - `lrlwguy.rtp.raleigh.ibm.com`

On an AIX or Linux client, the configuration is stored in a flat ASCII file named **sna_clnt.net**. This file is located in **/etc/sna** on AIX and **/etc/opt/ibm/sna** on Linux. It contains the domain, followed by the list of servers that the client will connect to.

Feedback

Your feedback is valuable

You can help improve the quality of IBM Education Assistant content to better meet your needs by providing feedback.

- Did you find this module useful?
- Did it help you solve a problem or answer a question?
- Do you have suggestions for improvements?

Click to send email feedback:

mailto:iea@us.ibm.com?subject=Feedback_about_Remote_API_Client_Configuration.ppt

This module is also available in PDF format at: [../Remote_API_Client_Configuration.pdf](..../Remote_API_Client_Configuration.pdf)

You can help improve the quality of IBM Education Assistant content by providing feedback.



Trademarks, disclaimer, and copyright information

IBM, the IBM logo, ibm.com, and AIX are trademarks or registered trademarks of International Business Machines Corp., registered in many jurisdictions worldwide. Other product and service names might be trademarks of IBM or other companies. A current list of other IBM trademarks is available on the web at "[Copyright and trademark information](http://www.ibm.com/legal/copytrade.shtml)" at <http://www.ibm.com/legal/copytrade.shtml>

Linux is a registered trademark of Linus Torvalds in the United States, other countries, or both.

Windows, and the Windows logo are registered trademarks of Microsoft Corporation in the United States, other countries, or both.

Other company, product, or service names may be trademarks or service marks of others.

THE INFORMATION CONTAINED IN THIS PRESENTATION IS PROVIDED FOR INFORMATIONAL PURPOSES ONLY. WHILE EFFORTS WERE MADE TO VERIFY THE COMPLETENESS AND ACCURACY OF THE INFORMATION CONTAINED IN THIS PRESENTATION, IT IS PROVIDED "AS IS" WITHOUT WARRANTY OF ANY KIND, EXPRESS OR IMPLIED. IN ADDITION, THIS INFORMATION IS BASED ON IBM'S CURRENT PRODUCT PLANS AND STRATEGY, WHICH ARE SUBJECT TO CHANGE BY IBM WITHOUT NOTICE. IBM SHALL NOT BE RESPONSIBLE FOR ANY DAMAGES ARISING OUT OF THE USE OF, OR OTHERWISE RELATED TO, THIS PRESENTATION OR ANY OTHER DOCUMENTATION. NOTHING CONTAINED IN THIS PRESENTATION IS INTENDED TO, NOR SHALL HAVE THE EFFECT OF, CREATING ANY WARRANTIES OR REPRESENTATIONS FROM IBM (OR ITS SUPPLIERS OR LICENSORS), OR ALTERING THE TERMS AND CONDITIONS OF ANY AGREEMENT OR LICENSE GOVERNING THE USE OF IBM PRODUCTS OR SOFTWARE.

© Copyright International Business Machines Corporation 2012. All rights reserved.