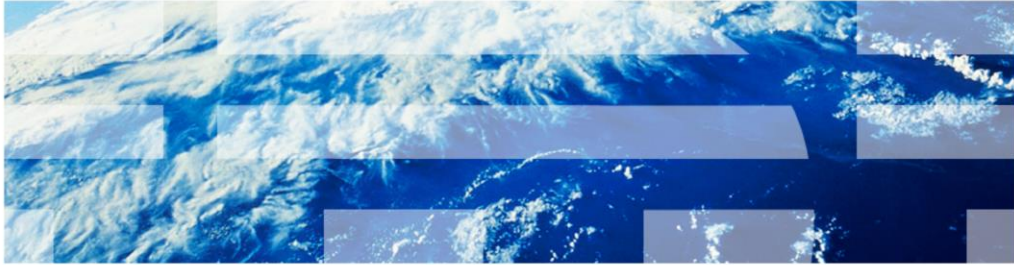


WebSphere Business Space V7.0

Administration



This presentation provides an introduction to the administration functions of WebSphere® Business Space V7.0.

Goal

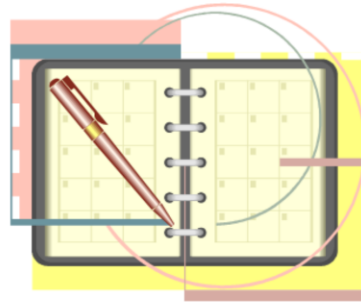
- Provide basic information about managing users and projects in WebSphere Business Space



The goal of this presentation is to provide the basic information needed to configure a WebSphere Business space so that the business space owner can share it with other users.

Agenda

- The WebSphere Application Server foundation
- User registries
- Creating business spaces
- Managing business spaces
- Customizing business spaces
- The business space super user



When learning about administering business spaces you must start with the WebSphere Application Server foundation. The business space users are managed using the user-registry associated with the underlying WebSphere Application Server.

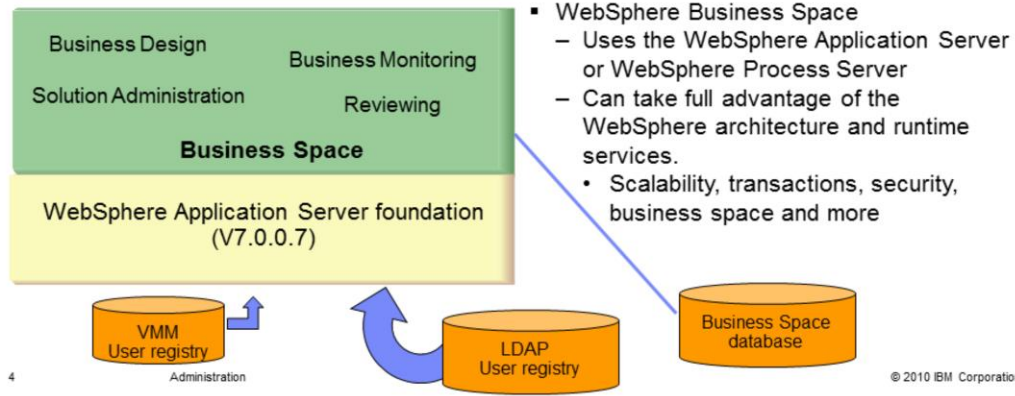
Once the user-base has been established, you can then begin creating business spaces and making them available to your user communities.

As a business space owner you can manage who can see your business space and who can edit it.

The super user is a supervising administrator that can manage and customize all of the business spaces for a given installation.

All of these topics are covered in this presentation.

The WebSphere foundation



Shown here are the basic relationships between the WebSphere Application Server, the user-registries, the business spaces and the business space database.

The Virtual Member Manager is the default file based user registry that comes with WebSphere Application Server.

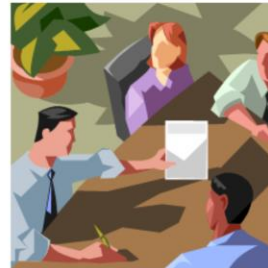
The LDAP user-registry is optional. Some form of LDAP user-registry is the preferred choice of most enterprise organizations for managing users and groups.

The WebSphere Business Space also uses a database for storing information about the business spaces. The database can be local or remote and if you don't have one of the supported databases, the Profile Management Tool configures Business Space with the Derby Embedded database.

The configuration shown here is a simple stand-alone server. Since the business spaces are extensions of WebSphere Application Server, there are many possible topological combinations and configuration options. For details on the advanced topologies refer to the product information center. See the topic, "Configuring Business Space".

User registries

- Administrative security is enabled by default during installation
- All users and groups are defined in the WebSphere Application Server user registry
 - The default user registry is the WebSphere Virtual Member manager (VMM) file based security
 - VMM can be federated with a custom registry or with an LDAP user registry.
 - Configured through the WebSphere Application Server *Integrated Solutions Console*
- Three levels of administration
 - WebSphere Application Server
 - Business Space
 - Application



All of the users and groups are defined in the WebSphere Application Server user-registry. The default WebSphere user registry uses the WebSphere Virtual Member Manager. The user-registry can be extended by federating it with a custom user-registry or an LDAP user-registry. The user-registries are configured using the WebSphere Integrated Solutions Console. If the WebSphere Virtual Member Manager is used then all the users and groups are managed using the Integrated Solutions Console. If the user-registry is federated with an LDAP registry, then the users and groups are administered using the interface provided by the LDAP registry. If a custom user-registry is used then the interface for managing the users and groups will need to be provided by the custom user-registry.

The user access control is composed of three layers, WebSphere Application Server, Business Space, and the application.

The next level to consider is the Business Space. A business space can be created by anyone that is in the user-registry. The person that creates the Business Space becomes the owner. The owner of the Business Space can then share the Business Space with other viewers or editors. A business space is created by using an existing template. Once the Business Space has been created, the owner of the Business Space can then manage which users or groups can view or edit the space.

The application level security will depend on the application. An application in Business Space is a composition of widgets that collaborate to provide specific functionality. For example, business process design, business monitoring or solution administration.

WebSphere security

The screenshot displays the WebSphere Integrated Solutions Console interface. On the left is a navigation tree with categories like 'Welcome', 'Guided Activities', 'Servers', 'Applications', 'Resources', 'Security', 'Environment', 'System administration', 'Users and Groups', 'Monitoring and Tuning', 'Troubleshooting', 'Service integration', and 'UDDI'. The 'Security' category is expanded, showing sub-items: 'Secure administration, applications, and infrastructure', 'SSL certificate and key management', and 'Bus Security'. The main content area is titled 'Secure administration, applications, and infrastructure' and contains a 'Configuration' tab. Under this tab, there are two buttons: 'Security Configuration Wizard' and 'Security Configuration Report'. Below these are three sections: 'Administrative security' with a checked 'Enable administrative security' checkbox and links to 'Administrative User Roles' and 'Administrative Group Roles'; 'Application security' with a checked 'Enable application security' checkbox (circled in red); and 'Java 2 security' with a checked 'Warn if applications are granted custom permissions' checkbox and an unchecked 'Restrict access to resource authentication data' checkbox. The footer shows '6 Administration' on the left and '© 2010 IBM Corporation' on the right.

The WebSphere administrative security is enabled by default.

You might need to manually enable the application security using the WebSphere Integrated Solutions Console.

WebSphere virtual member manager

Integrated Solutions Console Welcome wpsadmin Help | Logout

View: All tasks

- ▣ Welcome
- ▣ Guided Activities
- ▣ Servers
- ▣ Applications
- ▣ Resources
- ▣ Security
- ▣ Environment
- ▣ System administration
 - ▣ Users and Groups
 - ▣ Administrative User Roles
 - ▣ Administrative Group Roles
 - ▣ **Manage Users**
 - ▣ Manage Groups
 - ▣ Monitoring and Tuning
 - ▣ Troubleshooting
 - ▣ Service integration
 - ▣ UDDI

Manage Users

Search for Users

Search by: User ID *Search for: * *Maximum results: 100

5 users matched the search criteria.

Select	User ID	First name	Last name	E-mail	Unique Name
<input type="checkbox"/>	Dick	Dick	Woods	zaq123	uid=Dick,o=defaultWIMFileBasedRealm
<input type="checkbox"/>	Harry	Harry	Mess	zaq123	uid=Harry,o=defaultWIMFileBasedRealm
<input type="checkbox"/>	Tom	Tom	Thumb	zaq123	uid=Tom,o=defaultWIMFileBasedRealm
<input type="checkbox"/>	jstratfo	Jeff	Stratford	jstratfo	uid=jstratfo,o=defaultWIMFileBasedRealm
<input type="checkbox"/>	wpsadmin	wpsadmin	wpsadmin		uid=wpsadmin,o=defaultWIMFileBasedRealm

Page 1 of 1 Total: 5

First create the users, then the groups

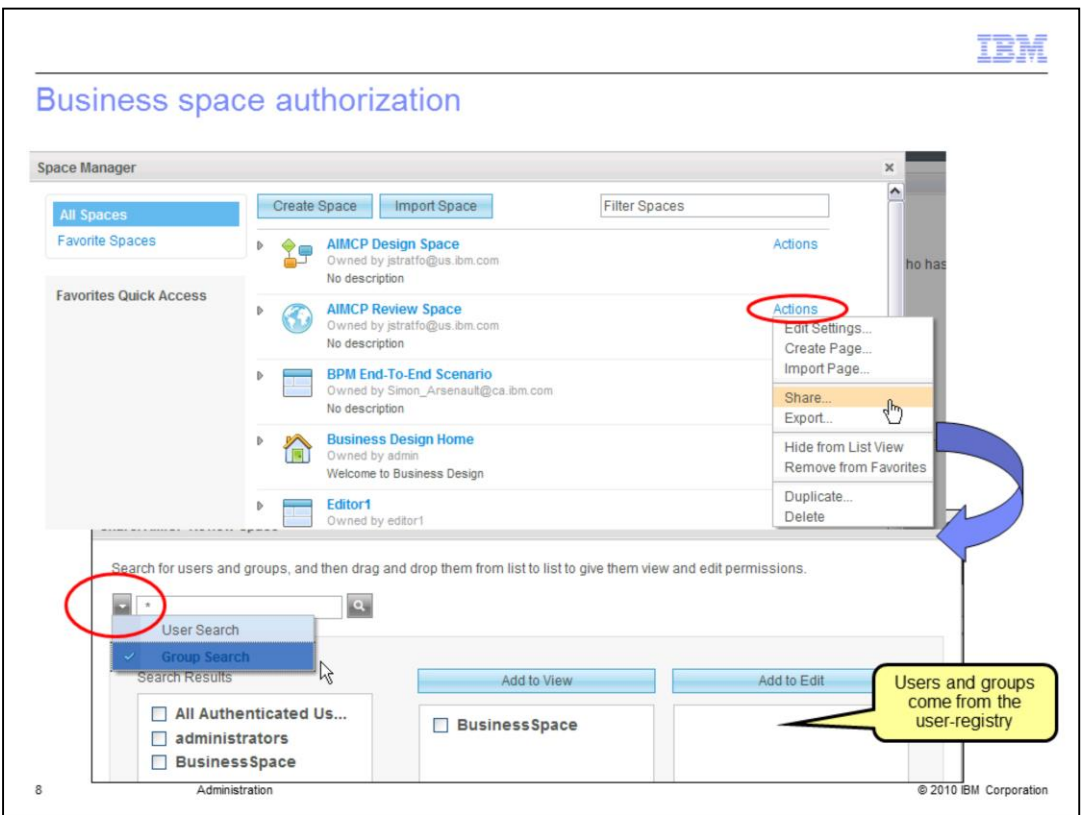
7 Administration © 2010 IBM Corporation

With the WebSphere Application Server virtual member manager, the users and groups are created using the Integrated Solutions Console. First create the users, then the groups and then add the users to the groups.

Before a user can log into the WebSphere Business Space, they must be defined here.

You do not need to do anything with the administrative user and group roles.

Working with the users and groups in the WebSphere Integrated Solutions Console is simple and easy. Be sure to save your work when you are done.



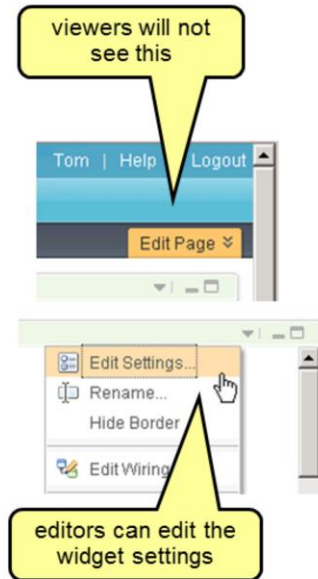
Any person that is defined in the user-registry can log into the WebSphere Business Space and create their own Business Space. If there are no Business Spaces associated with their name then they are presented with the Welcome Business Space. To create a new Business Space use one of the predefined templates available from the Space Manager dialog.

The owner of the Business Space can grant permissions to the entire business space or to individual pages using the share option from the action menu. To set the permissions for a page, expand the twisty to the left of the business space. This will display the list of pages and their action menus.

Any person or group that is in the user-registry can be added as a “viewer” or “editor”. When adding a user or group, select the down arrow to set the search criteria to “user search” or “group search”. To reduce search time in large user registries, use specific criteria for the user-search.

Viewers, editors and widgets

- Widgets are application components
- A Business Space template aggregates a set of widgets to provide application functionality
- Business Space **viewers** can...
 - view widgets and navigate around in the business space
 - resize widgets
 - rearrange the order of the page tabs
- Business Space **editors** can...
 - add and remove pages to the business space
 - add and remove widgets to pages
 - configure widgets
- Business Space **owners** can...
 - delete and transfer ownership
 - manage the access privileges for other users
 - can do everything that an editor can do
- Business Space **superuser**
 - has administrative rights and has owner access to all spaces and pages
 - share access to a space or page with selected users or all authenticated users
 - create and manage templates



9

Administration

© 2010 IBM Corporation

The business space is a collection of widgets. Each widget is an application component that can collaborate with other widgets to provide application functionality. The business space owner or editor can then customize the application function by using the widget configuration feature.

Viewer and editor privileges are for the Business Space only.

A person with *editor* privileges can add widgets and pages to the Business Space and can edit the settings of the individual widgets.

A person with *viewer* privileges will not see the 'edit pages' menu in the business space and therefore is not able to configure the individual widgets.

Business Space owners are administrators for their business space. They can manage the viewers and editors and do all the things that the editors can do also.

Superusers have access to all the business spaces that are part of the server topology. They also have the ability to create and manage templates.

Creating a new business space

- Custom business space templates can also be created
 - Requires super user access.
 - With Business Space version 7, any user that is defined with the administrator role in the security section of the WebSphere Integrated Solutions console
 - Is automatically a super-user

10

Administration

© 2010 IBM Corporation

When creating a new business space there are some minor customizations that you can do.

Space styles are a quick and easy way for you to make your Business Space distinctive. A style sets the basic color scheme, the title, and the header background image.

WebSphere Business Space comes with a set of 11 styles including the default style.

The styles are implemented as Cascading Style Sheets. Instructions for extending the existing themes are provided in the product information center.

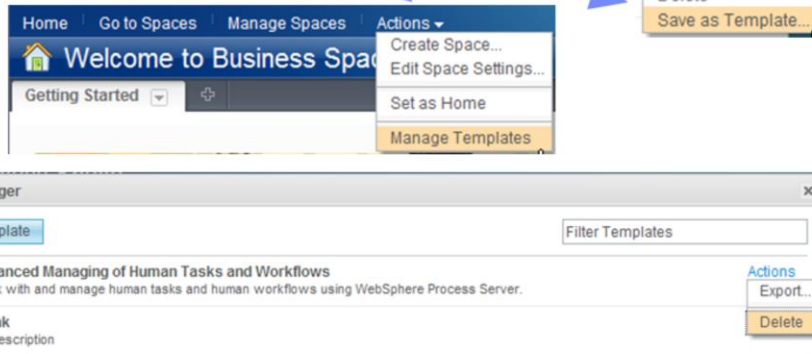
The space icons, in the far right column can be used to give your business space a personal touch. Just select one that represents your project in some way.

Custom business space templates can also be created by a user with the super user access.

With Business Space version 7, any user that is defined with the administrator role in the security section of the WebSphere Integrated Solutions console is automatically a super user.

Business space templates

- Requires super user authority
- The super user can take any existing business space and turn it into a business space template
- As a super user, you can also manage the templates.
 - Export
 - Delete



11

Administration

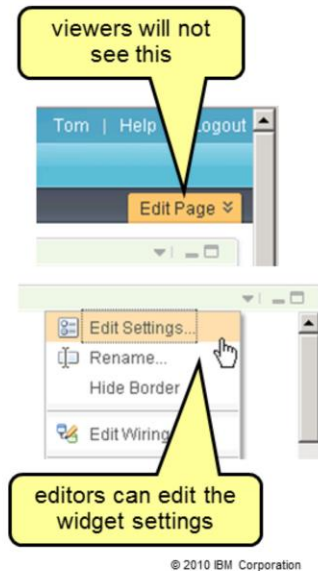
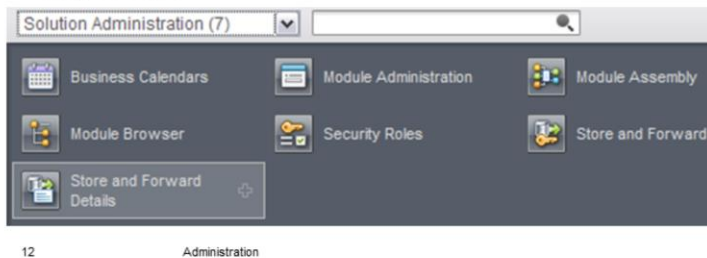
© 2010 IBM Corporation

Creating a business space template is as easy as pressing the 'Save as Template' button. The part that might be confusing is that you will not see this option unless you are logged in as a super user.

The manage templates option on the main Actions menu is also only available to the super-user. This is where you go to delete, import or export a template.

Configuring business space widgets

- Business space pages are customized by adding, removing and arranging widgets
- Widgets are also customizable
 - This is the application level administration
 - Performed by business space editors
- Widget settings are very specific to the widget
 - defines the function available to the end-user
- Details of the widget settings are covered in the product specific widgets topic



The widget settings represent the third level of administration available in WebSphere Business Space.

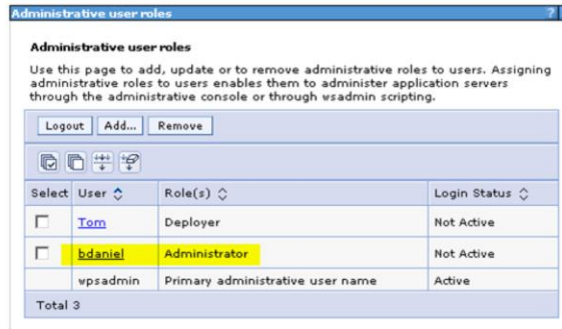
The settings that are available are very specific to each widget and can only be changed by a user that has been given editor privilege to the business space.

The 'edit page' tab at the right of the business space window provides that visual cue that the current-user is an editor. If the tab is not available, then the current-user is a business space viewer.

Business space super user

- For details, visit the product information center
 - Assigning the Business Space superuser role

http://publib.boulder.ibm.com/infocenter/dmndhelp/v7r0mx/topic/com.ibm.websphere.wbpm.bspace.config.doc/doc/tcfg_bsp_superuser.html



13

Administration

© 2010 IBM Corporation

The business space super user has been mentioned several times during this discussion. It is worth mentioning one more time because the way it is defined is different from versions of business space before version 7.0.

With version 7.0 a business user is defined as anyone that has the *administrator* administrative role in the user-registry.

Here bdaniel has been given the Administrator role in the default, VMM user-registry. If you are using an LDAP user registry you will need to define the Administrator role there. For details on how to configure the administrator role when using an LDAP user-registry, refer to the product information center.

The user-id that is used when installing the secure server profile is automatically associated with the *administrator* roles.

Summary

- The WebSphere Application Server foundation
- User registries
- Creating business spaces
- Managing business spaces
- Customizing business spaces
- The business space super user



The key to the business space administration is the underlying user-registry which is provided by the WebSphere Application Server foundation.

The WebSphere administration model introduces the concepts of users and the user-registry, along with the administrative roles. The administrative role of interest for business space administrators is the *administrator role*. This defines the business space super-user. The business space super-user authority spans all business spaces in the server topology. The super-user manages business space templates and home spaces.

The next level of administration is the business space owner. The business space owner can set the style and icon for the business space and manages who can use it and how. There are two kinds of users, viewers and editors. Viewers can use the business space but cannot make fundamental changes to the pages, add widgets or configure the widgets.

Business Space editors represent the application level administration. They can add pages, add widgets to pages and can configure the settings for the individual widgets.

Trademarks, disclaimer, and copyright information

IBM, the IBM logo, ibm.com, and WebSphere are trademarks or registered trademarks of International Business Machines Corp., registered in many jurisdictions worldwide. Other product and service names might be trademarks of IBM or other companies. A current list of other IBM trademarks is available on the Web at "[Copyright and trademark information](http://www.ibm.com/legal/copytrade.shtml)" at <http://www.ibm.com/legal/copytrade.shtml>

THE INFORMATION CONTAINED IN THIS PRESENTATION IS PROVIDED FOR INFORMATIONAL PURPOSES ONLY. WHILE EFFORTS WERE MADE TO VERIFY THE COMPLETENESS AND ACCURACY OF THE INFORMATION CONTAINED IN THIS PRESENTATION, IT IS PROVIDED "AS IS" WITHOUT WARRANTY OF ANY KIND, EXPRESS OR IMPLIED. IN ADDITION, THIS INFORMATION IS BASED ON IBM'S CURRENT PRODUCT PLANS AND STRATEGY, WHICH ARE SUBJECT TO CHANGE BY IBM WITHOUT NOTICE. IBM SHALL NOT BE RESPONSIBLE FOR ANY DAMAGES ARISING OUT OF THE USE OF, OR OTHERWISE RELATED TO, THIS PRESENTATION OR ANY OTHER DOCUMENTATION. NOTHING CONTAINED IN THIS PRESENTATION IS INTENDED TO, NOR SHALL HAVE THE EFFECT OF, CREATING ANY WARRANTIES OR REPRESENTATIONS FROM IBM (OR ITS SUPPLIERS OR LICENSORS), OR ALTERING THE TERMS AND CONDITIONS OF ANY AGREEMENT OR LICENSE GOVERNING THE USE OF IBM PRODUCTS OR SOFTWARE.

© Copyright International Business Machines Corporation 2010. All rights reserved.