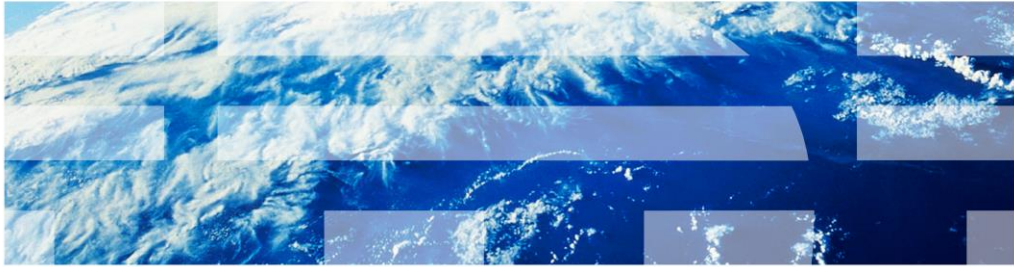

IBM Tivoli Business Service Manager 6.1

Create custom URL launch action for the Tivoli Business Service Manager 6.1 Service Viewer



© 2013 IBM Corporation

This presentation covers creating a custom URL Launch Action for Tivoli® Business Service Manager 6.1.

Assumptions

- You are familiar with or have heard of Tivoli Business Service Manager 6.1
- You plan to deploy Tivoli Business Service Manager 6.1 soon
- You have access to minimum required hardware for Tivoli Business Service Manager 6.1

This presentation is built for those who are deploying Tivoli Business Service Manager 6.1 or 6.1.1. This presentation is designed to help you build a custom URL launch action for the Tivoli Business Service Manager Service Viewer.

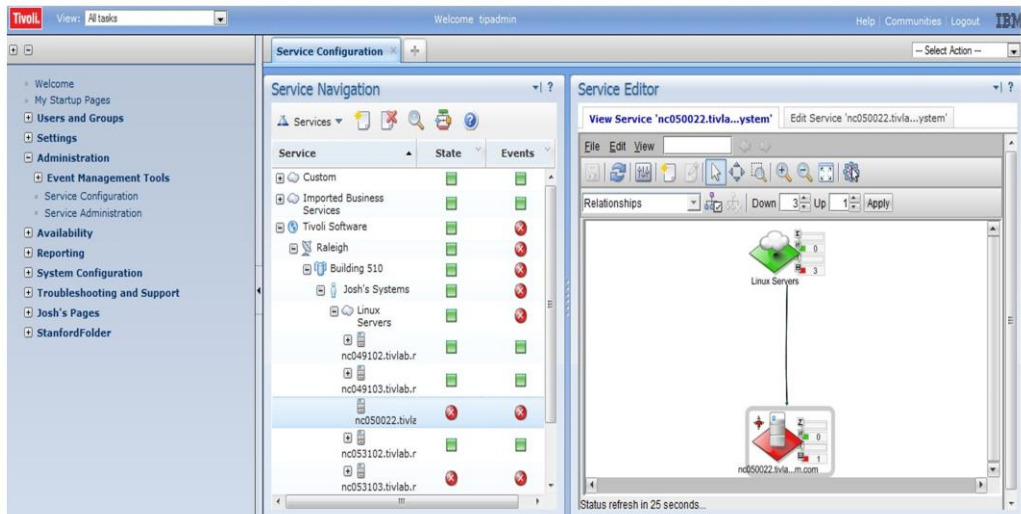
Objectives

When you complete this module, you can perform these common and simple customization tasks

- Build a custom view definition
- Start a custom action from that view
- Enable a URL-based menu

When you complete this module, you can enable a URL menu and change that URL menu.

Build a custom view definition



4

Create custom URL launch action for the Tivoli Business Service Manager 6.1 Service Viewer

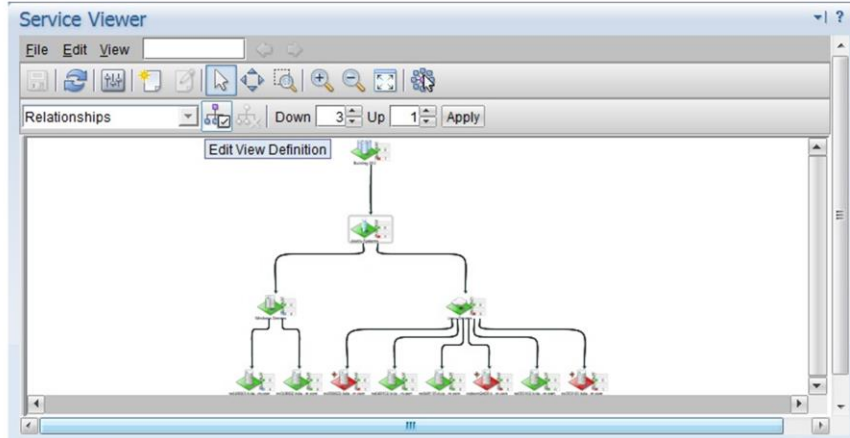
© 2013 IBM Corporation

From the Administration menu on the left:

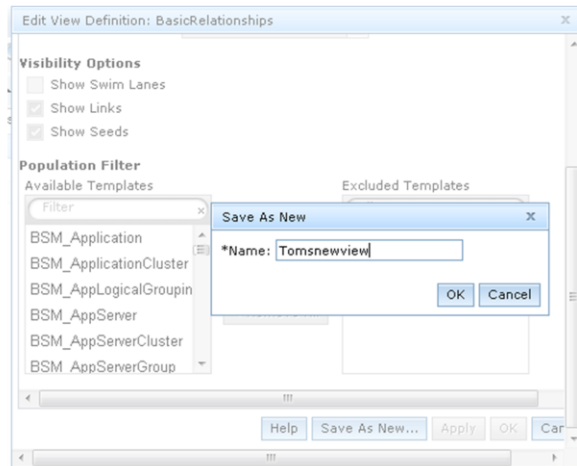
Select Service Configuration.

Select a service from the Service Navigation portlet.

Click the View Service tab to access the view definition editor.

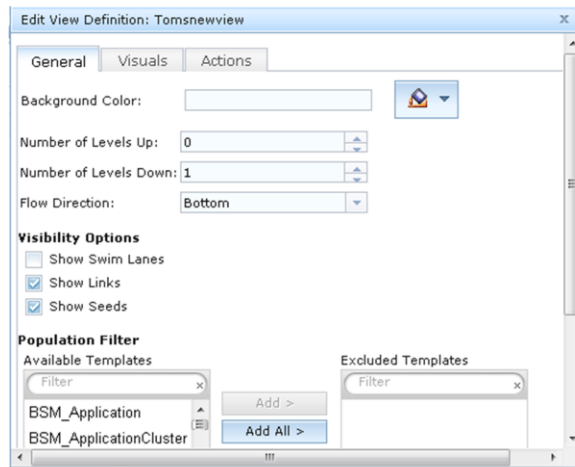


Begin by editing an existing view definition in your current Service Viewer.



While editing this view definition, rename it to a unique name.

Build a custom view definition, save, and define actions

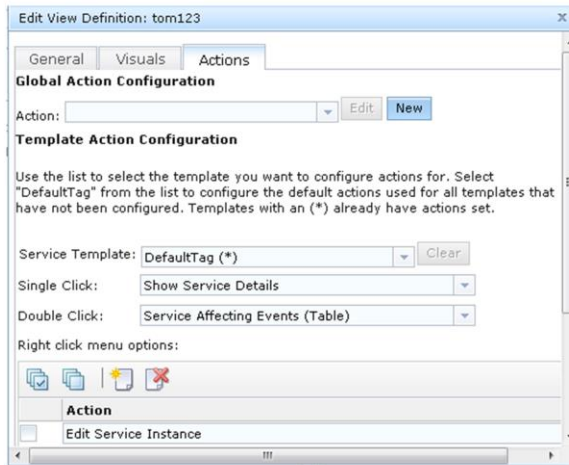


You now have a new saved view definition that you can edit.

Create custom URL launcher (1 of 2)

Build a static launch to item first:

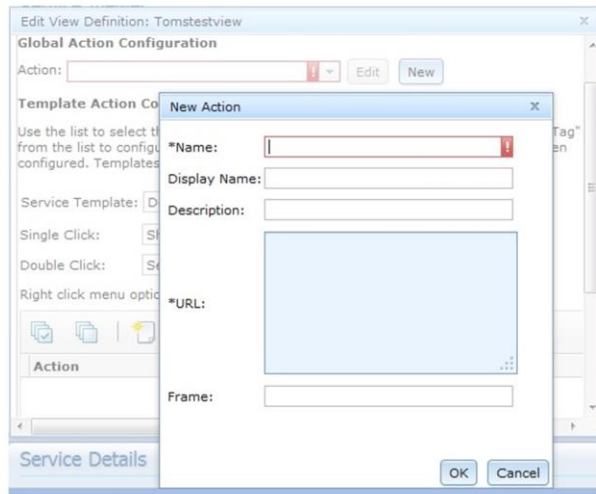
1. Edit your customized view definition to deploy a launch URL



Click the Select Actions tab of new view definition to edit.

Create custom URL launcher (2 of 2)

2. In the Edit View Definition window, click New to create a new action



Click New.

Create custom URL Launch

3. Add a default launch action

The screenshot shows a dialog box titled "Edit Action" with a close button (X) in the top right corner. The dialog contains the following fields:

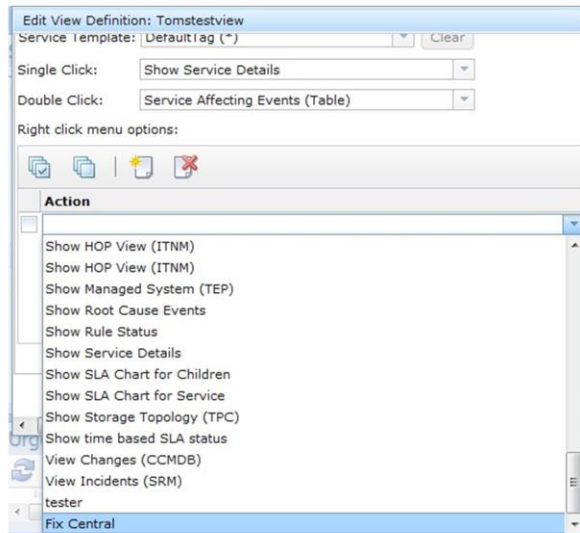
- *Name:** launchFixCentral (highlighted with a mouse cursor)
- Display Name:** Fix Central
- Description:** Fix Central IBM's website for fixes
- *URL:** http://www-933.ibm.com/support/fixcentral/swg/
- Frame:** _blank

At the bottom of the dialog are two buttons: "OK" and "Cancel".

Edit New action with URL.

Create custom URL launch

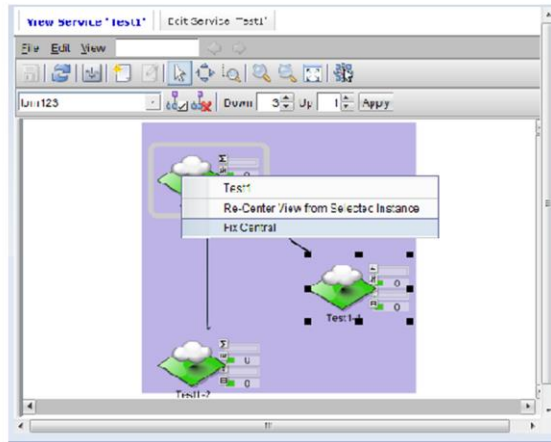
4. Click **Fix Central** in the **Action** menu



New URL action Fix Central is located in the Action drop-down menu.

Static view definition results

New static action is added to view definition



12

Create custom URL launch action for the Tivoli Business Service Manager 6.1 Service Viewer

© 2013 IBM Corporation

On your service view definition, you now have a Fix Central customer URL launcher. To access this menu, right-click the assigned service.

References

- Documentation for Tivoli Business Service Manager 6.1:

http://pic.dhe.ibm.com/infocenter/tivihelp/v3r1/index.jsp?topic=/com.ibm.tivoli.itbsm.doc_6.1/welcome.htm

- Customization guide:

<http://www-05.ibm.com/e-business/linkweb/publications/servlet/pbi.wss?CTY=US&FNC=SRX&PBL=SC23-6042-07>

Links to additional documentation and the customization guide are shown.

Summary

Now that you have completed this module, you can perform these common and simple customization tasks

- Build a custom view definition
- Start a custom action from that view
- Enable a URL-based menu

Now that you have completed this module, you can enable a URL menu and change that URL menu.

Trademarks, disclaimer, and copyright information

IBM, the IBM logo, ibm.com, and Tivoli are trademarks or registered trademarks of International Business Machines Corp., registered in many jurisdictions worldwide. Other product and service names might be trademarks of IBM or other companies. A current list of other IBM trademarks is available on the web at "[Copyright and trademark information](http://www.ibm.com/legal/copytrade.shtml)" at <http://www.ibm.com/legal/copytrade.shtml>

Other company, product, or service names may be trademarks or service marks of others.

THE INFORMATION CONTAINED IN THIS PRESENTATION IS PROVIDED FOR INFORMATIONAL PURPOSES ONLY. WHILE EFFORTS WERE MADE TO VERIFY THE COMPLETENESS AND ACCURACY OF THE INFORMATION CONTAINED IN THIS PRESENTATION, IT IS PROVIDED "AS IS" WITHOUT WARRANTY OF ANY KIND, EXPRESS OR IMPLIED. IN ADDITION, THIS INFORMATION IS BASED ON IBM'S CURRENT PRODUCT PLANS AND STRATEGY, WHICH ARE SUBJECT TO CHANGE BY IBM WITHOUT NOTICE. IBM SHALL NOT BE RESPONSIBLE FOR ANY DAMAGES ARISING OUT OF THE USE OF, OR OTHERWISE RELATED TO, THIS PRESENTATION OR ANY OTHER DOCUMENTATION. NOTHING CONTAINED IN THIS PRESENTATION IS INTENDED TO, NOR SHALL HAVE THE EFFECT OF, CREATING ANY WARRANTIES OR REPRESENTATIONS FROM IBM (OR ITS SUPPLIERS OR LICENSORS), OR ALTERING THE TERMS AND CONDITIONS OF ANY AGREEMENT OR LICENSE GOVERNING THE USE OF IBM PRODUCTS OR SOFTWARE.

© Copyright International Business Machines Corporation 2013. All rights reserved.