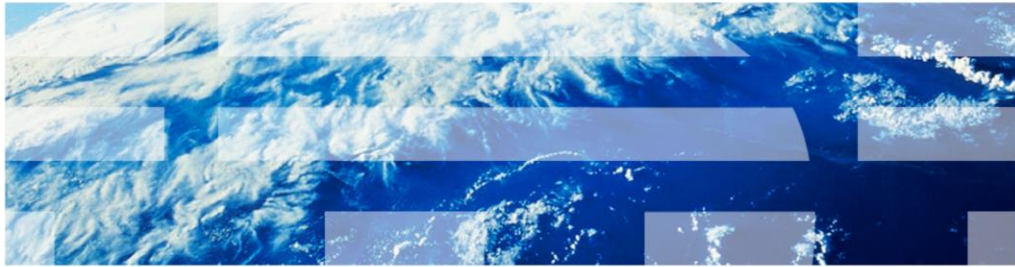


# IBM Tivoli Business Server Manager V4.2.1

## Integrating Tivoli Business Server Manager and WebGui in Tivoli Integrated Portal



© 2011 IBM Corporation

In this module, you learn about Integrating Tivoli Business Server Manager and WebGui in Tivoli Integrated Portal.

## Assumptions

- You are familiar with Tivoli Business Server Manager
- You are familiar with Tivoli Business Server Manager 4.2.1 installations

### **Assumptions.**

An assumption for this module is that you are familiar with Tivoli Business Server Manager and Tivoli Business Server Manager 4.2.1 installations.

## Objectives

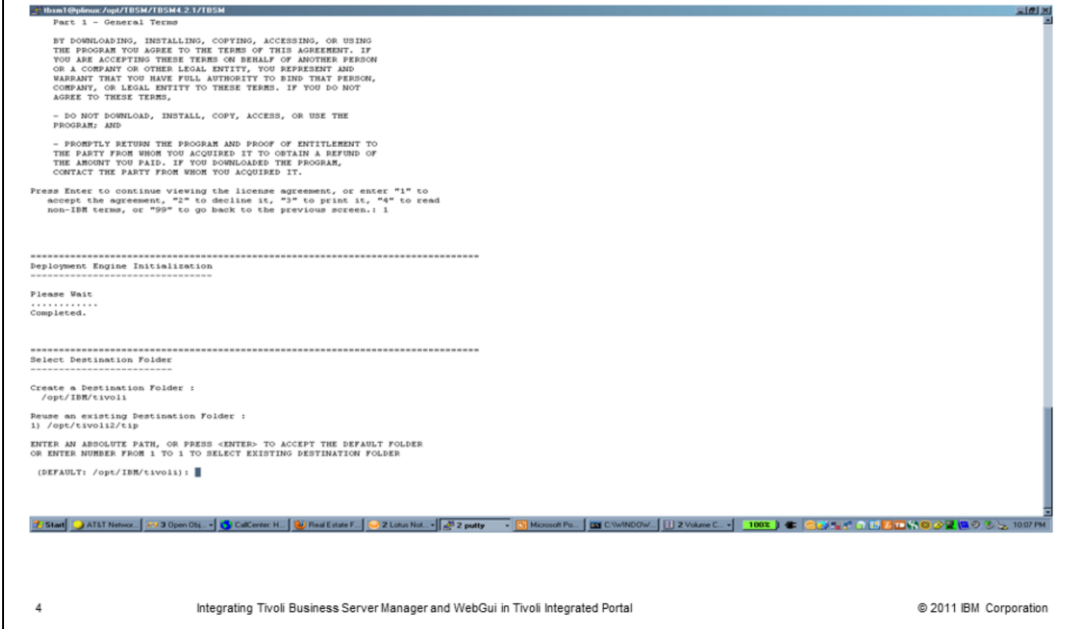
When you complete this module, you can perform these tasks:

- Describe Tivoli Business Server Manager and WebGui installation
- Describe installation order
- Install Tivoli Business Server Manager
- Install Tivoli Business Server Manager fix packs
- Install WebGui
- Install WebGui fix packs
- Run the **runwaapi** command to fix Tivoli Business Server Manager views
- Describe Tivoli Business Server Manager views after WebGui installation

### **Objectives.**

When you complete this module, you can describe Tivoli Business Server Manager and WebGui installation and installation order. You can install Tivoli Business Server Manager, Tivoli Business Server Manager fix packs, WebGui, and WebGui fix packs. You can run the **runwaapi** command to fix Tivoli Business Server Manager views, and describe Tivoli Business Server Manager views after WebGui installation.

## Install Tivoli Business Server Manager (1 of 2)

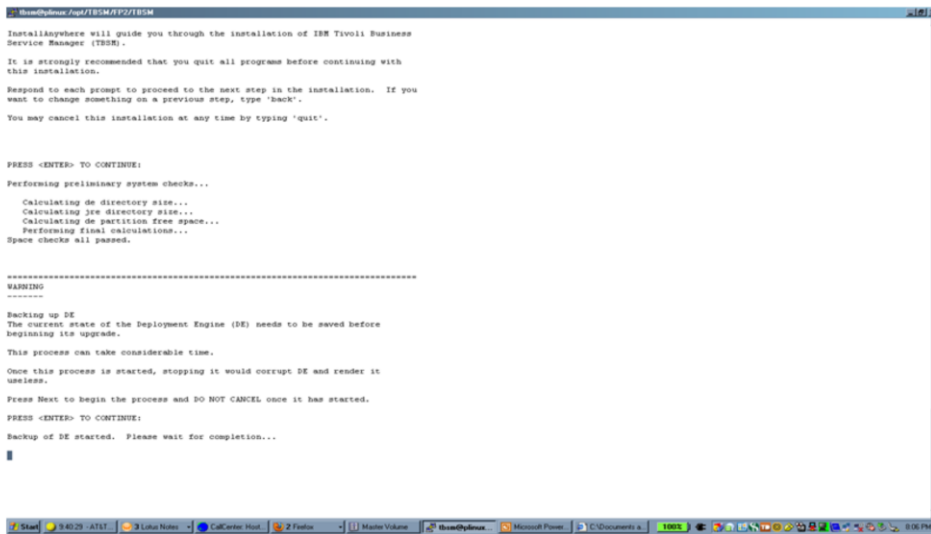


### Install Tivoli Business Server Manager (1 of 2).

The Tivoli Business Server Manager installation is shown. Note: All installation steps must be done using the same user.



## Install Tivoli Business Server Manager fix packs



```
ibm@hydra: /usr/IBM/TBSM
InstallAnywhere will guide you through the installation of IBM Tivoli Business
Service Manager (TBSM).

It is strongly recommended that you quit all programs before continuing with
this installation.

Respond to each prompt to proceed to the next step in the installation. If you
want to change something on a previous step, type 'back'.

You may cancel this installation at any time by typing 'quit'.

PRESS <ENTER> TO CONTINUE:

Performing preliminary system checks...

  Calculating de directory size...
  Calculating jre directory size...
  Calculating de partition free space...
  Performing final calculations...
Space checks all passed.

*****
WARNING
*****

Backing up DE
The current state of the Deployment Engine (DE) needs to be saved before
beginning its upgrade.

This process can take considerable time.

Once this process is started, stopping it would corrupt DE and render it
useless.

Press Next to begin the process and DO NOT CANCEL once it has started.

PRESS <ENTER> TO CONTINUE:

Backup of DE started. Please wait for completion...

█
```

### Install Tivoli Business Server Manager fix packs.

Tivoli Business Server Manager does not accept WebGui and does not function properly without Fix Pack 2 installed. Fix Pack 2 and any subsequent fix pack releases are required.

## Install WebGui

1. Verify that Tivoli Business Server Manager 4.2.1 Fix Pack 2 installed.
2. Run the base package installer, authenticate using Tivoli Integrated Portal. When setting up authentication, select **(none)** as opposed to Omnibus. Authentication is already set up for you from your previous instance of Tivoli Integrated Portal.
3. Download and run WebGui Fix Pack 3, the installation link is shown:  
[www-01.ibm.com/support/docview.wss?uid=swg24026737](http://www-01.ibm.com/support/docview.wss?uid=swg24026737)  
You do not have to install the eWAS update installer, the installation is already done.  
However, make sure that you stop Tivoli Integrated Portal when performing the upgrade.
4. Run the **runwaapi** command to create Tivoli Business Server Manager views.

### Install WebGui.

Perform the steps shown.

## Run the WebGui installer

```
ibm@linux02:~/opt/IBM/Integrator/Integrator>
Launching installer...

Command Line Arguments contain illegal values.

Usage: install-linux02 [-F <path_to_installer_properties_file>] [-options]
    (to execute the installer)

where options include:
  -?                show this help text
  -i [swing | console | silent]
                    specify the user interface mode for the installer
  -D<name>=<value>   specify installer properties

NOTES:
1. the path to the installer properties file may be either absolute,
   or relative to the directory in which the installer resides.
2. if an installer properties file is specified and exists, all other
   command line options will be ignored.
3. if a properties file named either 'installer.properties' or
   '<NameOfInstaller>.properties' resides in the same directory as the
   installer, it will automatically be used, overriding all other command
   line options, unless the '-F' option is used to point to another valid
   properties file.
4. if an installer properties file is specified but does not exist, the
   default properties file, if present, will be used. Otherwise, any
   supplied command line options will be used, or if no additional
   options were specified, the installer will be run using the default
   settings.

[ibm@linux02 ~]$ ./install.sh -i console
Preparing to install...
Extracting the JRE from the installer archive...
Unpacking the JRE...
Extracting the installation resources from the installer archive...
Configuring the installer for this system's environment...

Launching installer...

Preparing CONSOLE Mode Installation...
=====
Choose Locale...
-----
1- Deutsch
*2- English
3- Espa#ol
4- Fran#ais
5- Italiano
6- Portugu#s (Brazil)

CHOOSE LOCALE BY NUMBER: [ ]
```

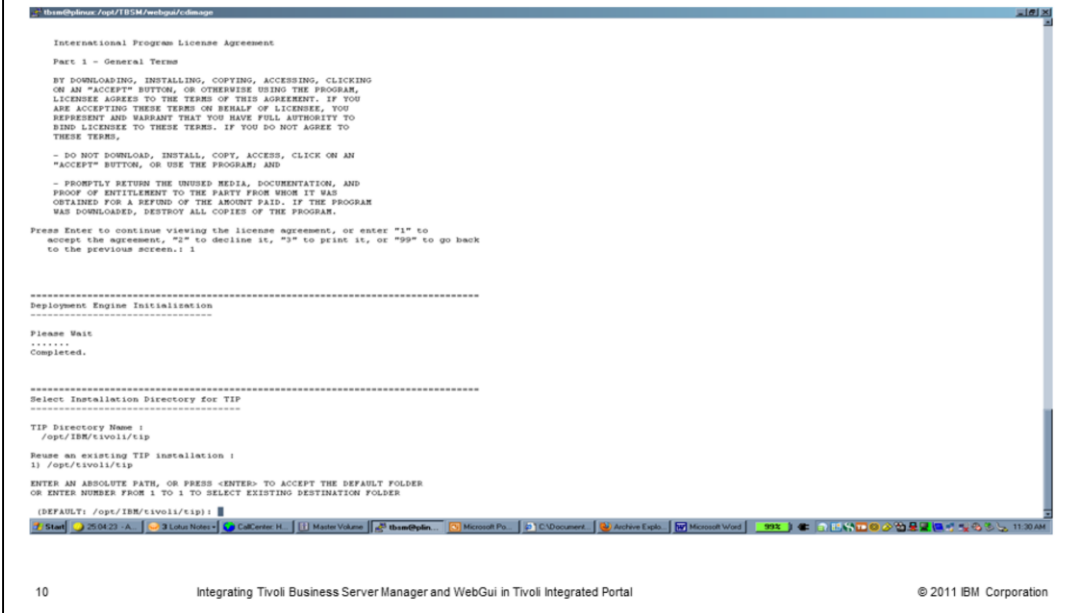
## Run the WebGui installer.

The WebGui installer is shown.





## Use the existing instance of Tivoli Integrated Portal



## Use the existing instance of Tivoli Integrated Portal.

Note: It is important to use the existing instance of Tivoli Integrated Portal and not create a new instance. Note: WebGui 7.3.1 is not supported with Tivoli Business Server Manager 4.2.1 because of variance in Tivoli Integrated Portal versions. Only WebGui 7.3 is supported with Tivoli Business Server Manager 4.2.1.

## Be sure to reuse the existing instance of Tivoli Integrated Portal

You must use the existing instance of Tivoli Integrated Portal. If you do not use the existing instance, more than one instance under the same DE user is created. Problems from multiple instances can prevent an integrated dashboard. Undoing this mistake is difficult.

### **Be sure to reuse the existing instance of Tivoli Integrated Portal.**

You must use the existing instance of Tivoli Integrated Portal.



## runwaapi link

[Link](https://w3-01.ibm.com/software/cast/cgi-bin/wdisplay.cgi?search_arg=runwaapi&max_hits_shown=30&hl_color=yellow&table_results=on&sorted_by=Relevance&coll=technotes&doc_url=http://www-01.ibm.com/support/docview.wss?uid=swg21440996&collections=technotes:hpmrs): [https://w3-01.ibm.com/software/cast/cgi-bin/wdisplay.cgi?search\\_arg=runwaapi&max\\_hits\\_shown=30&hl\\_color=yellow&table\\_results=on&sorted\\_by=Relevance&coll=technotes&doc\\_url=http://www-01.ibm.com/support/docview.wss?uid=swg21440996&collections=technotes:hpmrs](https://w3-01.ibm.com/software/cast/cgi-bin/wdisplay.cgi?search_arg=runwaapi&max_hits_shown=30&hl_color=yellow&table_results=on&sorted_by=Relevance&coll=technotes&doc_url=http://www-01.ibm.com/support/docview.wss?uid=swg21440996&collections=technotes:hpmrs)

### **runwaapi link.**

Use this link to see instructions for the **runwaapi** command. Note: This link is available only to individuals with customer support portal access.

## Run runwaapi

### Creating Tivoli Business Server Manager views for Netcool/OMNIBus 7.3

Installation of Tivoli Business Server Manager 4.2.1 and Fix Pack 1 in an environment with an existing Netcool/OMNIBus 7.3 and the Netcool/OMNIBus WebGui causes the views used by Tivoli Business Server Manager to not be created

To create the views, run the command on the dashboard server:

On UNIX:

1. Open a command shell as a user with administrator permissions on Tivoli Integrated Portal

2. Change directories:

```
cd <TIP_HOME>/products/ncw/waapi/bin
```

3. Run the command:

```
./runwaapi -file <TIP_HOME>/systemApps/isclite.ear/sla.war/install/  
webtopcore/create_tbsm_views.xml -user <userid> -password <password>
```

On Windows:

1. Open a command prompt as a user with administrator permissions on Tivoli Integrated Portal

2. Change directories:

```
cd <TIP_HOME>\products\ncw\waapi\bin
```

3. Run the command:

```
runwaapi -file <TIP_HOME>\systemApps\isclite.ear\sla.war\install\  
webtopcore\create_tbsm_views.xml -user <userid> -password <password>
```

## Run runwaapi.

Run the **runwaapi** command using the steps shown.

## Run runwaapi (continued)

```
IBM@linux ~$ cd /opt/tivoli/products/ncw/aaapi/bin
[IBM@linux bin]$ ./runwaapi -file /opt/tivoli/tip/systemapps/iscuite.enr/sis.war/install/webtopcore/create_them_views.xml -user tipadmin -password tipadmin
*****
WAAPIClient: Request sent to server on http://localhost:16315/ibm/console/webtop/...
Tue Dec 07 13:51:29 PST 2010
*****
WAAPIClient: 3 methods returned errors during execution:

Method 'view.createView' returned:
Cannot create view RawEvents - Duplicate view name 'RawEvents' for viewbox 'ayatem'

Method 'view.createView' returned:
Cannot create view ServiceState - Duplicate view name 'ServiceState' for viewbox 'ayatem'

Method 'view.createView' returned:
Cannot create view SLAStatus - Duplicate view name 'SLAStatus' for viewbox 'ayatem'
*****
WAAPIClient: 0 method was fully executed.
[IBM@linux bin]$
```

### Run runwaapi (continued).

The `runwaapi` command is shown.

## Restart Tivoli Business Server Manager and verify the event list

The screenshot shows the Tivoli Integrated Portal interface. The left sidebar contains a navigation menu with categories like Welcome, My Startup Pages, Security, Users and Groups, Troubleshooting, Administration, Availability, Reporting, and Settings. The main content area displays the 'Active Event List (AEL)' table.

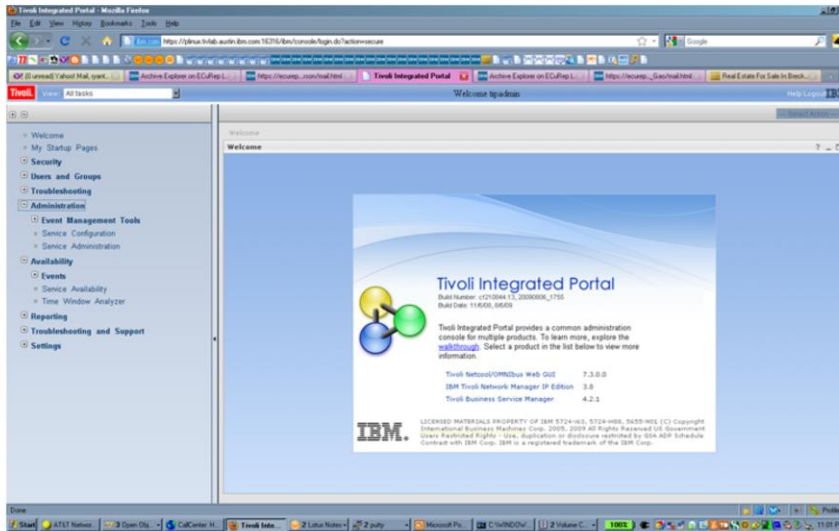
Serial	Node	Count	Last Occurrence	Summary
5	plmua	3	1291758228	A local process running on plmua has connected as username i...
31		1	1291758211	A RAD Impact process running on has connected as usernam...
33	plmua	1	1291758270	A WEBTOP process running on plmua has connected as user...

At the bottom of the table, it states: "0 rows inserted, 0 rows updated, and 0 rows deleted." The data source is identified as "RCORPS" with a refresh interval of 59 seconds.

**Restart Tivoli Business Server Manager and verify the event list.**



## Verify the installation splash screen



17

Integrating Tivoli Business Server Manager and WebGui in Tivoli Integrated Portal

© 2011 IBM Corporation

### Verify the installation splash screen.

Note: The splash screen does not indicate fix pack versions installed, fix pack version installation information is in your installation home directory.

## Installation pitfalls

- Never uninstall a product to reinstall it later, always restore to a previous version of installed product
- Use the same user every time
- Never run anything as root
- If you run into problems with WebGui, events loading, views not being created, open a PMR immediately
- Tivoli Business Server Manager Fix Pack 2 must be installed for this integration to be supported
- WebGui (IF2, or later) must be installed for this integration to be supported (All subsequent fix packs are supported)

### **Installation pitfalls.**

Review the installation pitfalls shown.

## User repository notes

Notes for users with Omnibus repositories:

- Before doing anything, for example, installing WebGui, make a backup administrator user with full access
- Turn synching to false for Webtop
- Set \$TIPHOME/profiles/TIPProfile/etc/webtop/server.init user sync to false
- Look at the Webtop data sources file and notice that the file is changed to some type of variable instead of the correct user password
- Notice that there were two users (tipadmin accounts) in both objserver repositories and files. After turning off sync, and restarting the server, delete the tipadmin account in object server

### **User repository notes.**

Review the user repository notes.

## Additional notes

- Web GUI 7.3 is the only version of WebGUI that works with Tivoli Business Server Manager 4.2.1
- Web GUI 7.3.1 is not supported under Tivoli Business Server Manager 4.2.1

### **Additional notes.**

Note the supported versions of Web GUI.

## Summary

Now that you have completed this module, you can perform these tasks:

- Describe Tivoli Business Server Manager and WebGui installation
- Describe the installation order
- Install Tivoli Business Server Manager
- Install Tivoli Business Server Manager fix packs
- Install WebGui
- Install WebGui fix packs
- Run the **runwaapi** command to fix Tivoli Business Server Manager views
- Describe Tivoli Business Server Manager views after WebGui installation

### Summary.

Now that you have completed this module, you can describe Tivoli Business Server Manager and WebGui installation and installation order. You can install Tivoli Business Server Manager, Tivoli Business Server Manager fix packs, WebGui, and WebGui fix packs. You can run the **runwaapi** command to fix Tivoli Business Server Manager views, and describe Tivoli Business Server Manager views after WebGui installation.

## Trademarks, disclaimer, and copyright information

IBM, the IBM logo, ibm.com, and Tivoli are trademarks or registered trademarks of International Business Machines Corp., registered in many jurisdictions worldwide. Other product and service names might be trademarks of IBM or other companies. A current list of other IBM trademarks is available on the web at "[Copyright and trademark information](http://www.ibm.com/legal/copytrade.shtml)" at <http://www.ibm.com/legal/copytrade.shtml>

THE INFORMATION CONTAINED IN THIS PRESENTATION IS PROVIDED FOR INFORMATIONAL PURPOSES ONLY. UNIX is a registered trademark of The Open Group in the United States and other countries.

Other company, product, or service names may be trademarks or service marks of others.

THE INFORMATION CONTAINED IN THIS PRESENTATION IS PROVIDED FOR INFORMATIONAL PURPOSES ONLY. WHILE EFFORTS WERE MADE TO VERIFY THE COMPLETENESS AND ACCURACY OF THE INFORMATION CONTAINED IN THIS PRESENTATION, IT IS PROVIDED "AS IS" WITHOUT WARRANTY OF ANY KIND, EXPRESS OR IMPLIED. IN ADDITION, THIS INFORMATION IS BASED ON IBM'S CURRENT PRODUCT PLANS AND STRATEGY, WHICH ARE SUBJECT TO CHANGE BY IBM WITHOUT NOTICE. IBM SHALL NOT BE RESPONSIBLE FOR ANY DAMAGES ARISING OUT OF THE USE OF, OR OTHERWISE RELATED TO, THIS PRESENTATION OR ANY OTHER DOCUMENTATION. NOTHING CONTAINED IN THIS PRESENTATION IS INTENDED TO, NOR SHALL HAVE THE EFFECT OF, CREATING ANY WARRANTIES OR REPRESENTATIONS FROM IBM (OR ITS SUPPLIERS OR LICENSORS), OR ALTERING THE TERMS AND CONDITIONS OF ANY AGREEMENT OR LICENSE GOVERNING THE USE OF IBM PRODUCTS OR SOFTWARE.

© Copyright International Business Machines Corporation 2011. All rights reserved.