



TPF Operations Server V1.2

TPF Users Group - Spring 2009

Title: New TPF Console Interface and TOS Updates

Name: Don Kallberg

Venue: Operations and Coverage Subcommittee

AIM Enterprise Platform Software
IBM z/Transaction Processing Facility Enterprise Edition 1.1.0

Any reference to future plans are for planning purposes only. IBM reserves the right to change those plans at its discretion. Any reliance on such a disclosure is solely at your own risk. IBM makes no commitment to provide additional information in the future.

© 2009 IBM Corporation

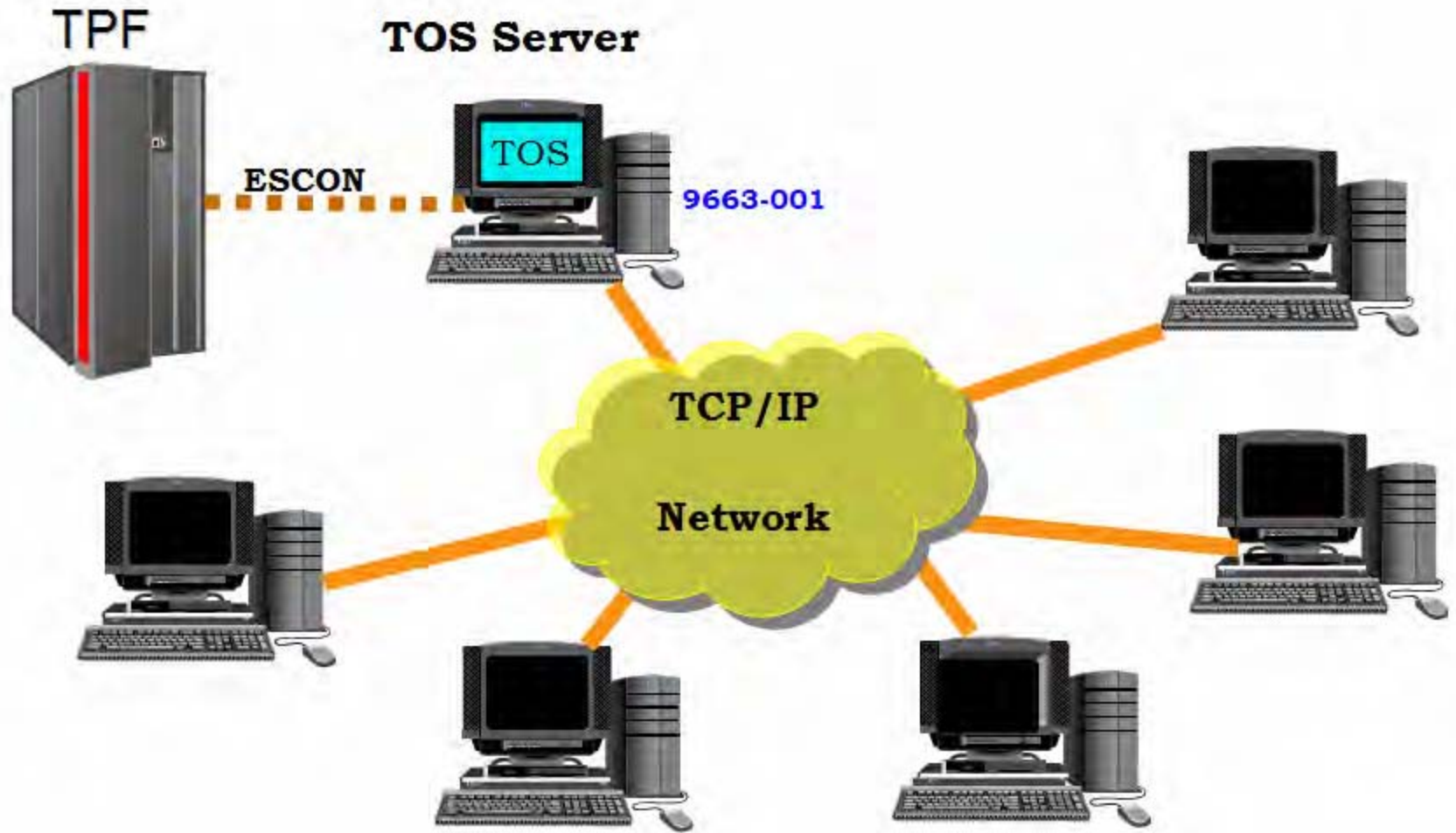
Agenda

- **New TPF Console Interface**
- **TPF Operations Server Product Distribution**
- **Pre-req Software**

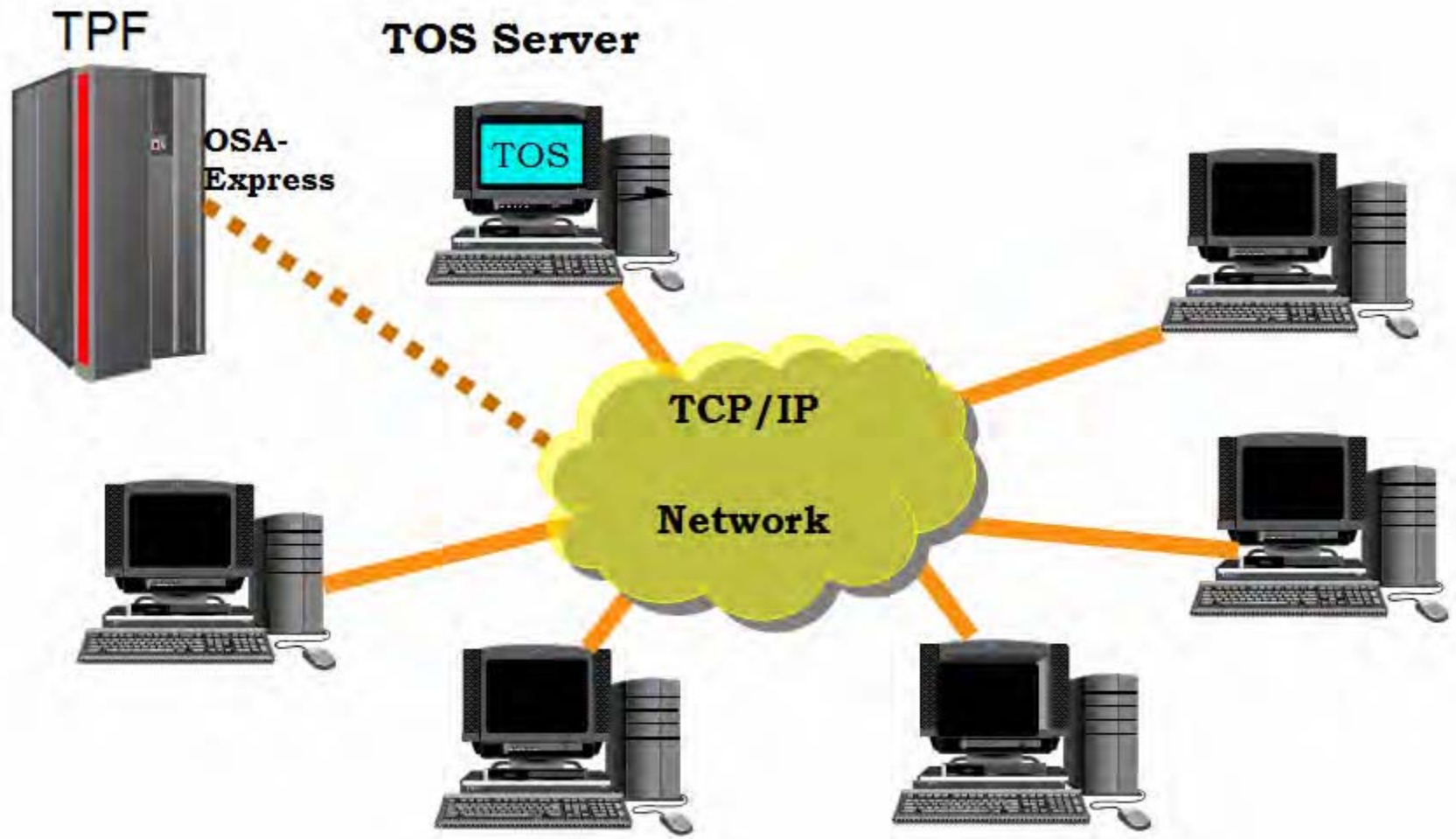
TPF Console Interfaces

- 3215 – Non-Native Console Support
 - Line mode protocol – currently ESCON attached
 - Great for outboard automation
- 3270 – Native Console Support
 - Screen mode – currently 2074 or OSA-ICC
 - Industry standard
- HMC – can be used with TPF genned with Non-Native Console Support
 - Interface in the Support Element
 - Great for initial bring up and operator fallback console

Current TOS 3215 Configuration



New TOS OSA-ICC 3215 Configuration



OSA-ICC 3215

- Removes the requirement for ESCON
- To be available as an RPQ per CEC
 - z9 and z10 – 3Q 2009
 - OSA-Express 2 for z9
 - OSA-Express 2 and OSA-Express 3 for z10
 - CD installation on the Support Element
- Requires TOS APAR IC54960

OSA-ICC 3215

- **For TPF and TPF guests under VM only**
 - TPF 4.1 and z/TPF
- **Supported Device on z/VM V 5.3 & V 5.4**
 - Requires APAR VM64474
 - z/VM V 5.2 can run as an unsupported device
 - z/VM V 5.2 end of service April 2009
- **Maximum of 32 concurrent 3215 TPF host sessions per OSA PCHID.**
 - TOS Support for multiple console sessions through one OSA-ICC 3215 session to a single TPF System.

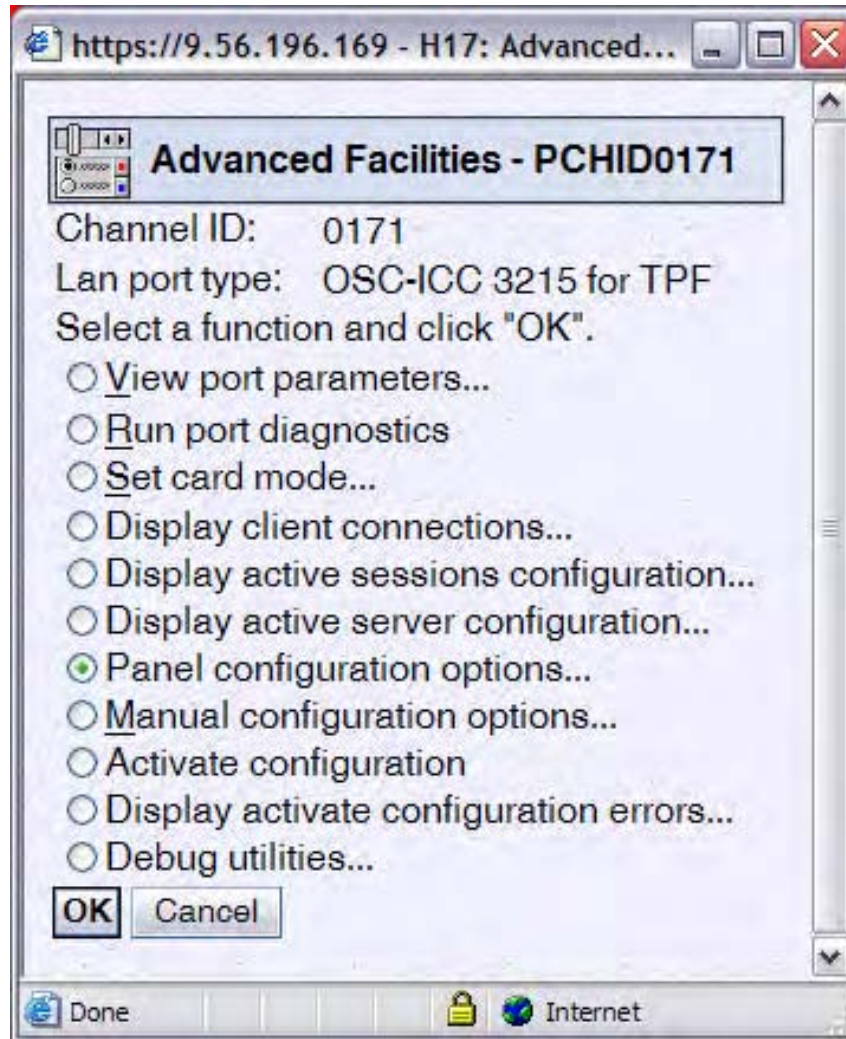
OSA-ICC 3215 Configuration

- Similar to configuration for 3270
- Defined through IOCDS updates
 - HCD or IOCP
- Configured on Support Element
 - HMC Single Object Operations
 - Select PCHID
 - Channel Operations -> Advanced Facilities
 - Card Specific Advanced Facilities

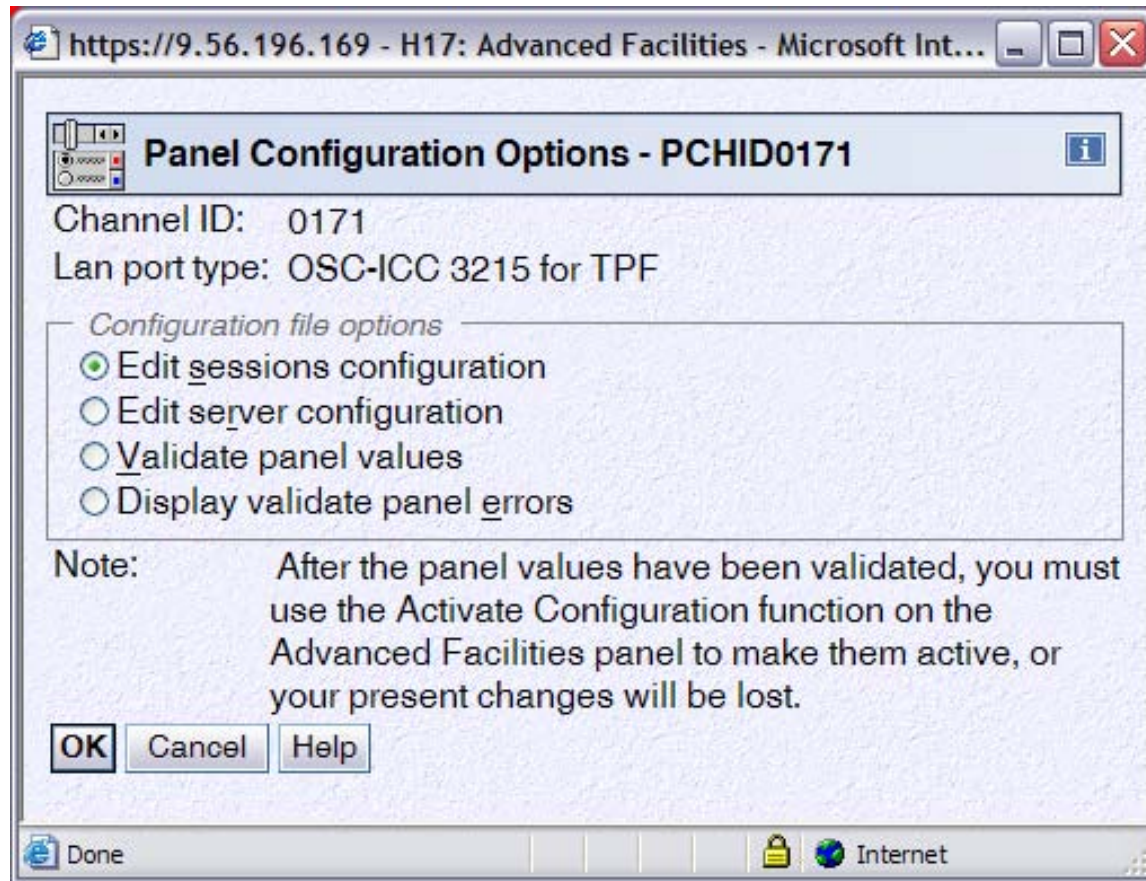
IOCDs Updates

- IOCDs statements
- CHPID PATH=(CSS(0,1),62),SHARED, *
 PARTITION=((CSS(0),(TPFP1,TPFP2,TPFT3),(=)),(CSS(1),*
 (TPFP11,TPFT12,TPFT13),(=))),**CHPARM=40**,PCHID=220,TYPE=OSC
 CNTLUNIT CUNUMBR=6200,PATH=((CSS(0),62),(CSS(1),62)),UNIT=OSC
 IODEVICE ADDRESS=(010,016),UNITADD=00,CUNUMBR=(6200), *
 PART=((CSS(0),TPFP1,TPFP2,TPFT3),(CSS(1),TPFP11,TPFT12,TPFT13)),**UNIT=3215**
- HCD
 - APAR OA24287 for z/OS V 1.7 - V1.10
 - APAR VM64410 for z/VM V5.3 & V5.4
 - Unit Parm set to 3215 will generate the CHPARM=40 parameter

OSA-ICC 3215 for TPF Configuration



OSA-ICC 3215 Panel Configuration



OSA-ICC 3215 Server Configuration

https://9.56.196.169 - H17: Advanced Facilities - Microsoft Internet Explorer

Edit Server Configuration - PCHID0170

Channel ID: 0170
Lan port type: OSC-ICC 3215 for TPF

Physical Port 0

Server name	<input type="text" value="Timmy"/>
Host IP address	* <input type="text" value="10.10.10.215"/>
TCP port	<input type="text" value="2300"/> (0-65535)
Default Gateway	* <input type="text" value="10.10.10.2"/>
Subnet Mask	* <input type="text" value="255.255.255.0"/>
Session reconnect time	* <input type="text" value="0"/> (0 - 86400)
Telnet non-operational time interval	* <input type="text" value="10"/> (0 - 180)

Frame type

DIX SNAP

Note: The recommended frame type for OSA-ICC is DIX. Changing the frame type to another mode without checking with your Network Administrator could cause a loss of connectivity to your sessions.

MTU Size(B) (256-1492)

Changing host IP address or port will cause dropping of any currently connected clients.

Done

OSA-ICC 3215 Session Configuration

P0057426: Edit Sessions Configuration

Edit Sessions Configuration

Channel ID: 0300
 Lan port type: OSC-ICC
 To change session data, select a line and click "Change".
 To save session data, click "Save".

Select	Index	State	CSS	MIFID	Device Number	Session Name	Clients IP	Attention Delay Timer
<input type="radio"/>	1	Available	0	02	00B0	sessB0	0.0.0.0	15
<input type="radio"/>	2	Available	0	02	00B1	sessB1	0.0.0.0	15
<input type="radio"/>	3	Available	0	02	00B2	sessB2	0.0.0.0	3
<input type="radio"/>	4	Available	0	02	00B3	sessB3	0.0.0.0	60
<input type="radio"/>	5	Available	0	02	00B4	sessB4	0.0.0.0	60
<input type="radio"/>	6	Available	0	02	00B5	sessB5	0.0.0.0	60
<input type="radio"/>	7	Available	0	02	00B6	sessB6	0.0.0.0	60
<input type="radio"/>	8	Available	0	02	00B7	sessB7	0.0.0.0	60
<input type="radio"/>	9	Available	0	02	00B8	sessB8	0.0.0.0	3
<input type="radio"/>	10	Available	0	02	00B9	sessB9	0.0.0.0	3
<input type="radio"/>	11	Available	0	02	00BA	sessBA	0.0.0.0	3
<input type="radio"/>	12	Available	0	02	00BB	sessBB	0.0.0.0	3
<input type="radio"/>	13	Available	0	02	00BC	sessBC	0.0.0.0	3
<input type="radio"/>	14	Available	0	02	00BD	sessBD	0.0.0.0	3
<input type="radio"/>	15	Available	0	02	00BE	sessBE	0.0.0.0	3

Save Change Cancel Help

TOS Host Interface

- Requires TOS APAR IC54960
 - TPF Operations Server V 1.2.05
 - TOS_PATCH_V1205_20090107
- TELNET Host Interface configured HOSTCFG.DAT
- Can coexist with other host interfaces on the same TOS Server

TOS Server HOSTCFG.DAT example

Host Interface	TELNET
OSA ICC 3215 Session Name	sessB0
Host TELNETD Address	10.10.10.215
Host TELNETD Port	2300
Command Retry Counter	3
MCS Identifier	`
Session Reconnect Delay	2000

TPF Operations Server CDs

- **TPF Operations V 1.2.05**
 - Available - June 29, 2007
 - CD and softcopy/electronic delivery
 - Registration required to receive electronic delivery.
 - http://www.ibm.com/software/htp/tpf/pages/req_full.htm
- **Individual APARs available on the Web**
 - TPF -> SUPPORT -> MAINTENANCE (<http://www.ibm.com/tpf/pages/maint.htm>)
 - APARs listed in the order closed
 - Unzip package and run TOSAPAR.BAT to apply.
- **Patch file containing all the latest closed APARs**
 - TOS_PATCH_Vnnnn_yyyymmdd.ZIP
 - Extract and run TOS_Patch.BAT

TPF Operations Server Pre-requisite Software

- **Windows XP Professional – SP 3**
- **Windows Server 2003 – SP2**
- **Windows Vista support for clients**
 - Requires TOS V 1.2.05
- **Luminex ESCON 3215 TPF Console Interface**
 - Version 1.08 (Sept. 2006)
 - IBM 9663-001 end of support 12/2009
- **IBM Personal Communications V 5.9**
 - Part of Host Access Client Package
- **DB2 V 9.5 tested with logging client**
- **Open Object REXX V 3.2**
 - <http://www.oorexx.org/>



Trademarks

- IBM, z9 DB2 are trademarks of International Business Machines Corporation in the United States, other countries, or both.
- Java and all Java-based trademarks are trademarks of Sun Microsystems, Inc. in the United States, other countries, or both.
- Microsoft and Windows are trademarks of Microsoft Corporation in the United States, other countries, or both.
- Other company, product, or service names may be trademarks or service marks of others.

- **Notes**
- Performance is in Internal Throughput Rate (ITR) ratio based on measurements and projections using standard IBM benchmarks in a controlled environment. The actual throughput that any user will experience will vary depending upon considerations such as the amount of multiprogramming in the user's job stream, the I/O configuration, the storage configuration, and the workload processed. Therefore, no assurance can be given that an individual user will achieve throughput improvements equivalent to the performance ratios stated here.
- All customer examples cited or described in this presentation are presented as illustrations of the manner in which some customers have used IBM products and the results they may have achieved. Actual environmental costs and performance characteristics will vary depending on individual customer configurations and conditions.
- This publication was produced in the United States. IBM may not offer the products, services or features discussed in this document in other countries, and the information may be subject to change without notice. Consult your local IBM business contact for information on the product or services available in your area.

- All statements regarding IBM's future direction and intent are subject to change or withdrawal without notice, and represent goals and objectives only.

- Information about non-IBM products is obtained from the manufacturers of those products or their published announcements. IBM has not tested those products and cannot confirm the performance, compatibility, or any other claims related to non-IBM products. Questions on the capabilities of non-IBM products should be addressed to the suppliers of those products.

- Prices subject to change without notice. Contact your IBM representative or Business Partner for the most current pricing in your geography.

- This presentation and the claims outlined in it were reviewed for compliance with US law. Adaptations of these claims for use in other geographies must be reviewed by the local country counsel for compliance with local laws.