

z/TPF EE V1.1

z/TPFDF V1.1

TPF Toolkit for WebSphere® Studio V3

TPF Operations Server V1.2



IBM Software Group

TPF Users Group Spring 2006

Possible use of Tivoli Enterprise Portal with TPF CDC

Name: Bill Davis / Don Kallberg
Venue: Performance Task Force

AIM Enterprise Platform Software

IBM z/Transaction Processing Facility Enterprise Edition 1.1.0

© IBM Corporation 2006

Any references to future plans are for planning purposes only. IBM reserves the right to change those plans at its discretion. Any reliance on such a disclosure is solely at your own risk. IBM makes no commitment to provide additional information in the future.

Overview

- Background on Tivoli Enterprise Portal / Omegamon
- A preview of a proposed prototype of the Tivoli Enterprise Portal interface to display performance data for the TPF system.
- TPF preview charts consisting of 4 tables, it is anticipated that the full product would contain 20 tables.
 - The data displayed is not real, however the agent contains all the code to interface to the framework.
 - The environment is fully contained on a single workstation where the TEP, TEPS, TEMS, and Agents run.
- Benefits of Tivoli Enterprise Portal Integration, replacing current CDC client.
- Next planned steps.

Tivoli Enterprise Portal – Demonstrable Deep Integration

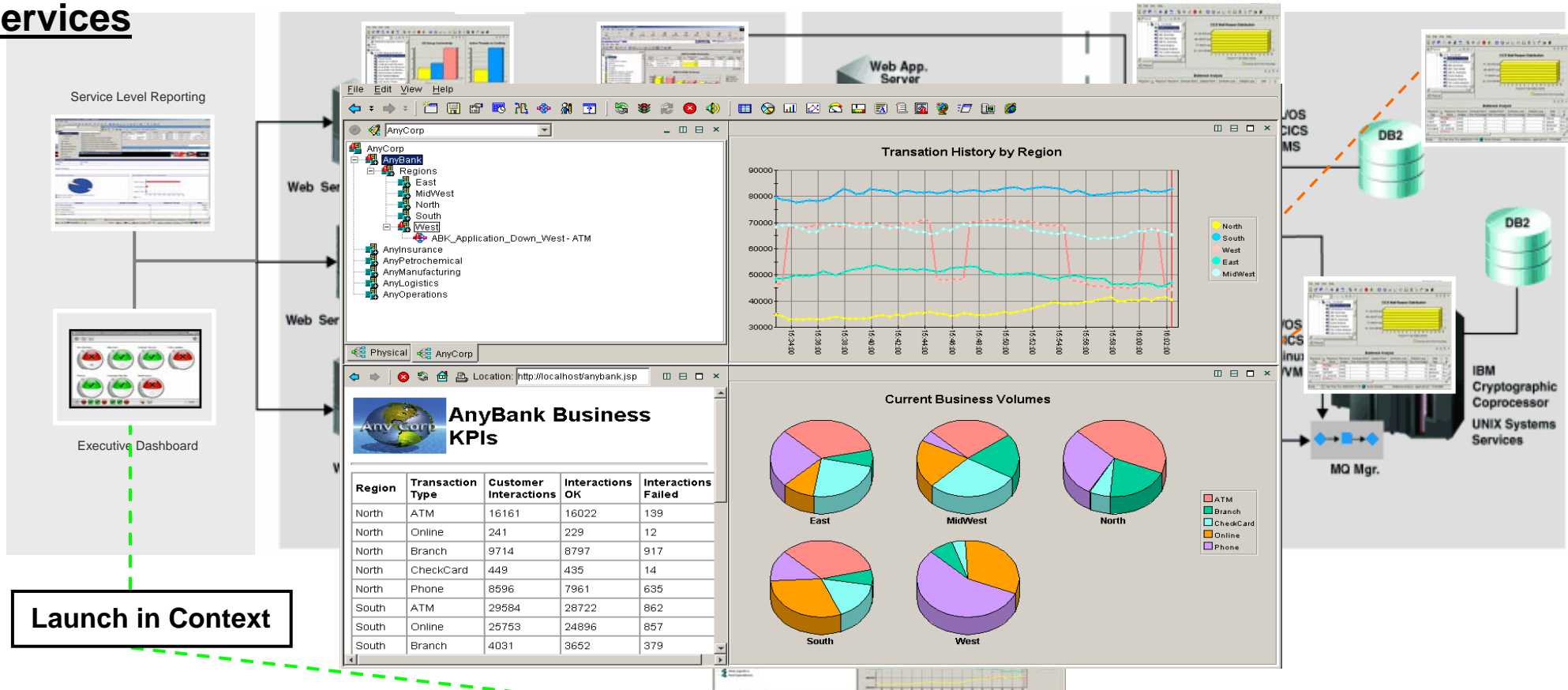
A Dynamic Role-based Workspace for Integrating IT Operations Silos – One portal to manage the overall health of the infrastructure

Business Services

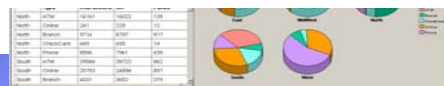
Distributed Resources

J2EE Transactions

Mainframe Resources

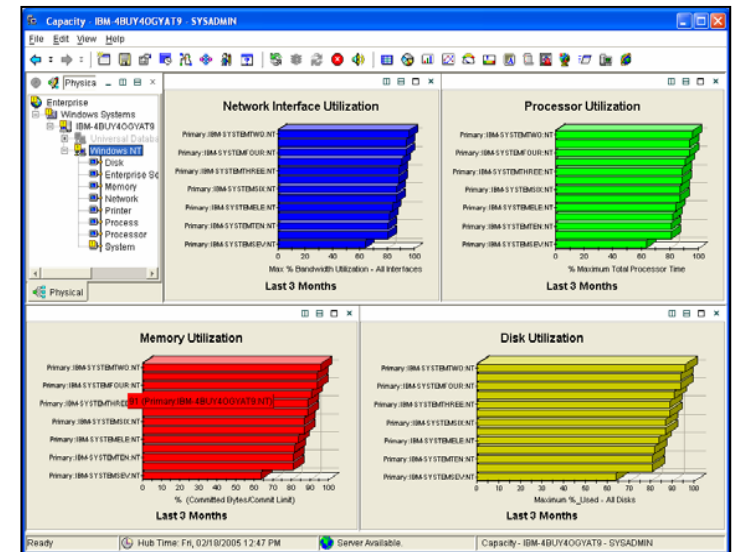
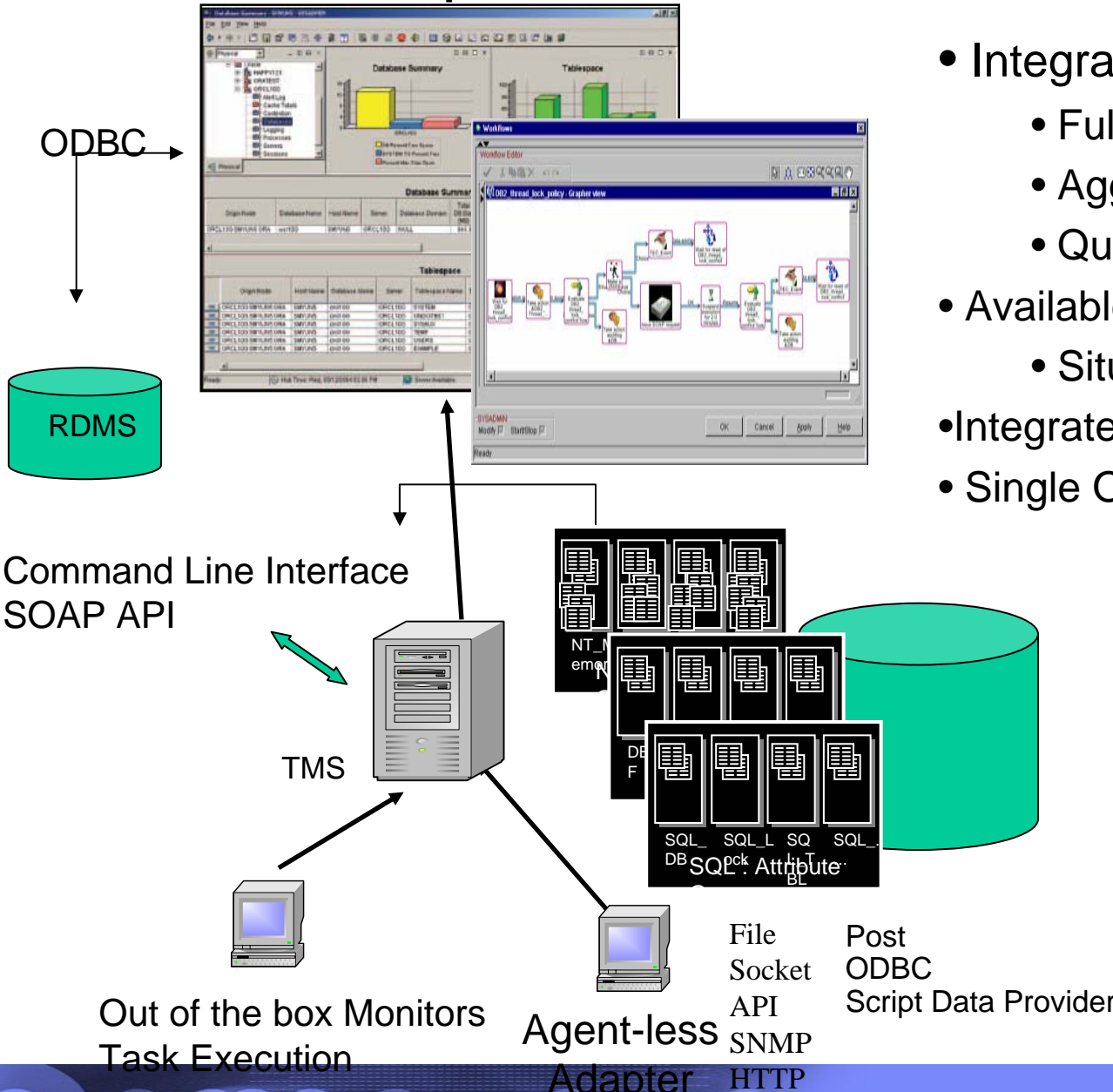


Everything at your Fingertips

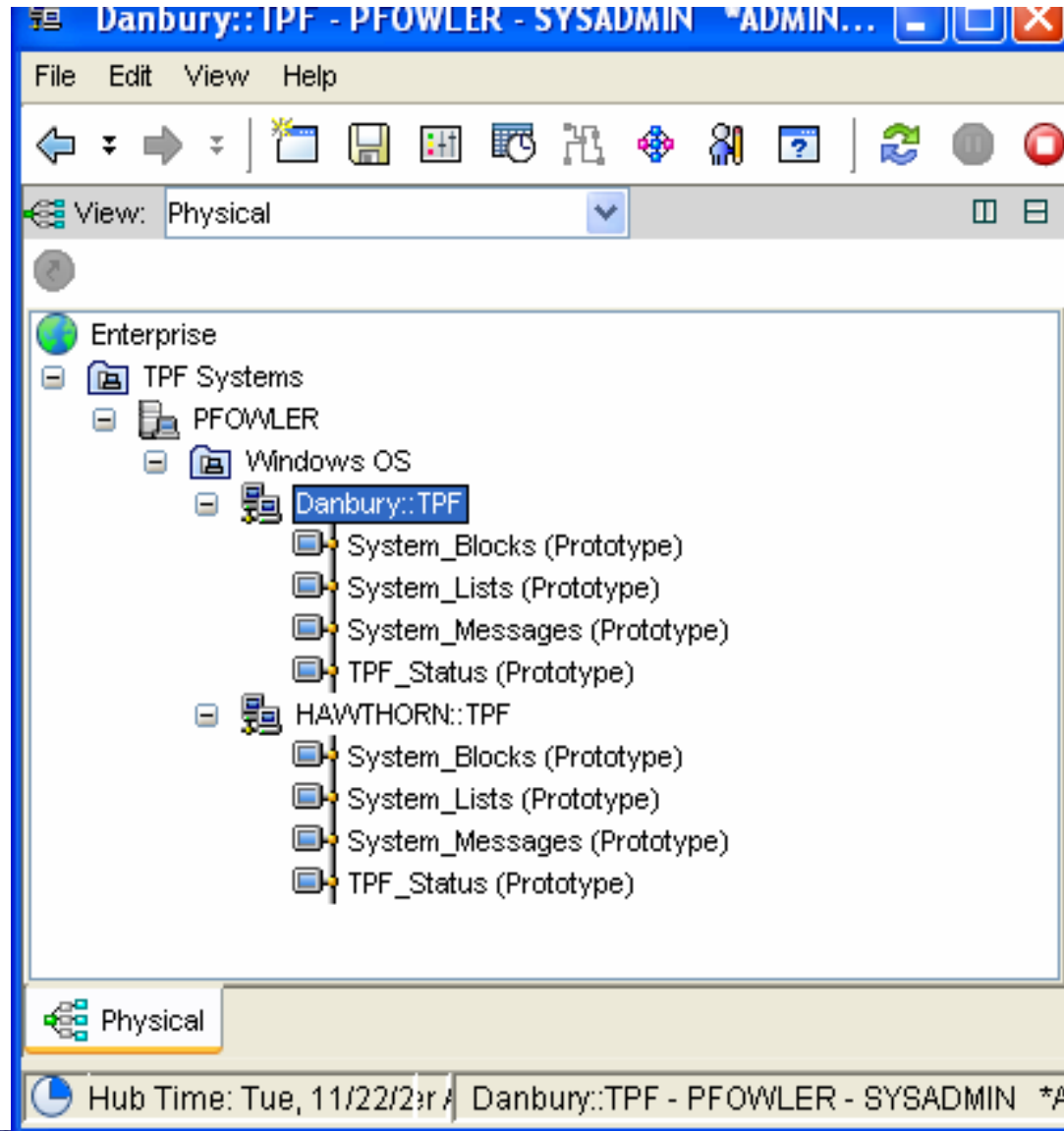


Tivoli Enterprise Portal – More than Visualization

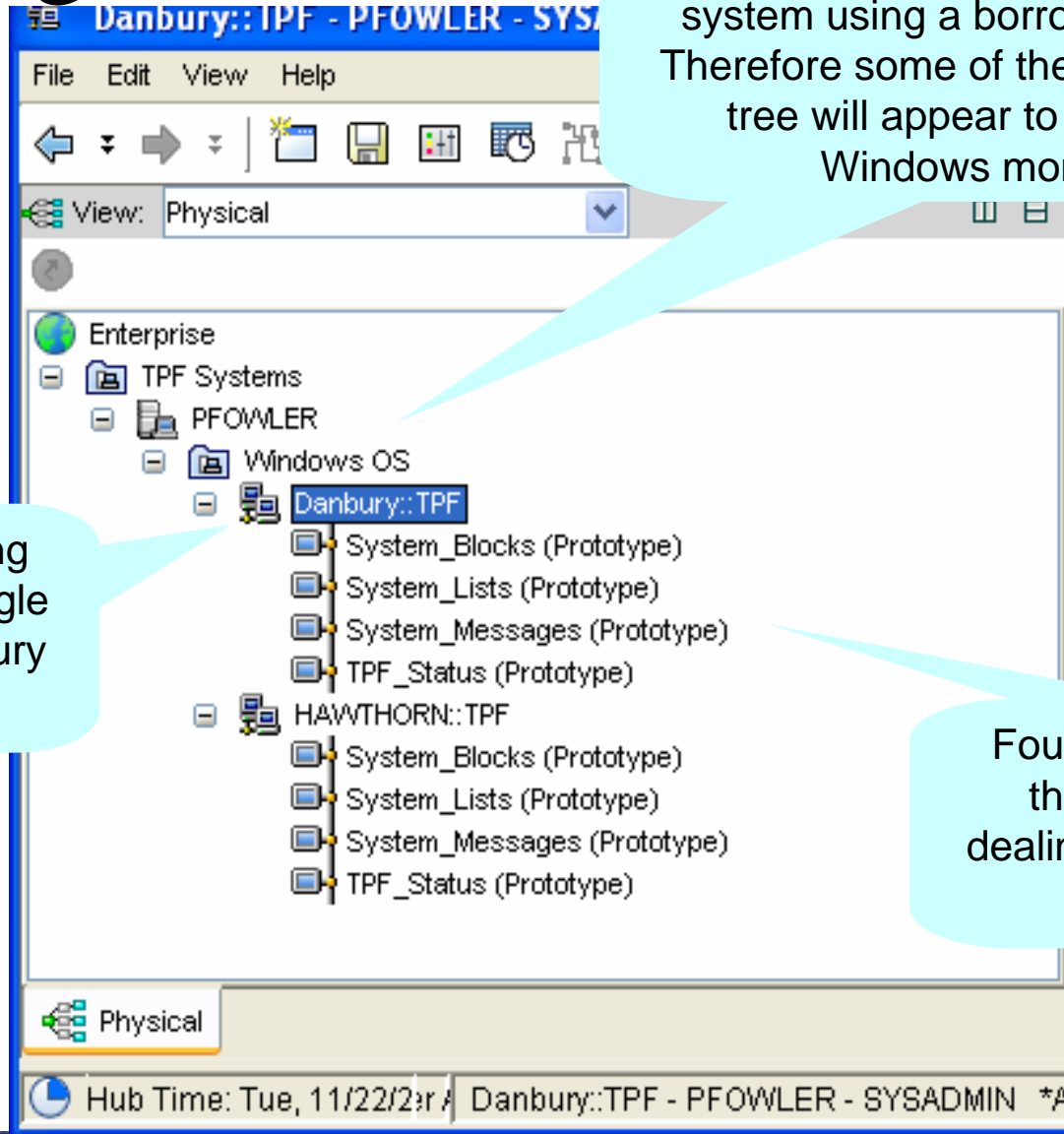
- Integrated Warehouse
 - Full Operational Data
 - Aggregation and Pruning
 - Quick Setup
- Available Data Management:
 - Situations, Workflows, Policies
- Integrated Run-book with Expert Advise
- Single Operations Console with Workflow



Navigation Tree



Navigation Tree



The prototype is on a windows system using a borrowed affinity. Therefore some of the items on the tree will appear to be for the Windows monitor.

Two systems being monitored by a single workstation. Danbury and Hawthorn

Four tables supported in the prototype mostly dealing with summary level information.

TPF View for all systems

TPF Systems - PFWLER - SYSADMIN *ADMIN MODE*

File Edit View Help

View: Physical

Enterprise

- TPF Systems
 - PFWLER
 - Windows OS
 - Danbury::TPF
 - System_Blocks (Prototype)
 - System_Lists (Prototype)
 - System_Messages (Prototype)
 - TPF_Status (Prototype)
 - HAWTHORN::TPF
 - System_Blocks (Prototype)
 - System_Lists (Prototype)
 - System_Messages (Prototype)
 - TPF_Status (Prototype)

System Message Rates

Enterprise Name	Complex Name	High Speed Message Rate	Low Speed Message Rate
DANBURY	CO0901	7.45	9.24
HAWTHORN	CO0822	7.26	7.71

System ECB Usage

Enterprise Name	Complex Name	ECB Blocks In Use	ECB Blocks Utilization
DANBURY	CO0901	100	33.20
HAWTHORN	CO0822	111	37.11

Processor Utilization

Enterprise Name	Utilization (%)
DANBURY	~68
HAWTHORN	~58

TPF - Active Systems

Enterprise Name	Complex Name	TPF Release	Program Update Tape Identifier	CPU Serial Number	CPU Machine Type	CPU Identifier	Subsystem Count	Subsystem User Count	Usable CPUs On LPAR	Collector Start Time	TimeStamp
HAWTHORN	CO0822	1.1.0	PUT01	FF02177F	2084342	A	4	0	1	11/17/05 12:03:16	11/22/05 09:25:32
DANBURY	CO0901	1.1.0	PUT01	FF02153F	2084342	A	4	16	8	11/03/05 16:45:33	11/22/05 09:25:32

Hub Time: Tue, 11/22/2005 09:25 AM Server Available TPF Systems - PFWLER - SYSADMIN *ADMIN MODE*

TPF View for all systems

System Messages for each monitored system

Enterprise Name	Complex Name	High Speed Message Rate	Low Speed Message Rate
DANBURY	CO0901	7.45	9.24
HAWTHORN	CO0822	7.26	7.71

ECB Usage for each monitored system

Enterprise Name	Complex Name	ECB Blocks In Use	ECB Blocks Utilization
DANBURY	CO0901	100	33.20
HAWTHORN	CO0822	111	37.11

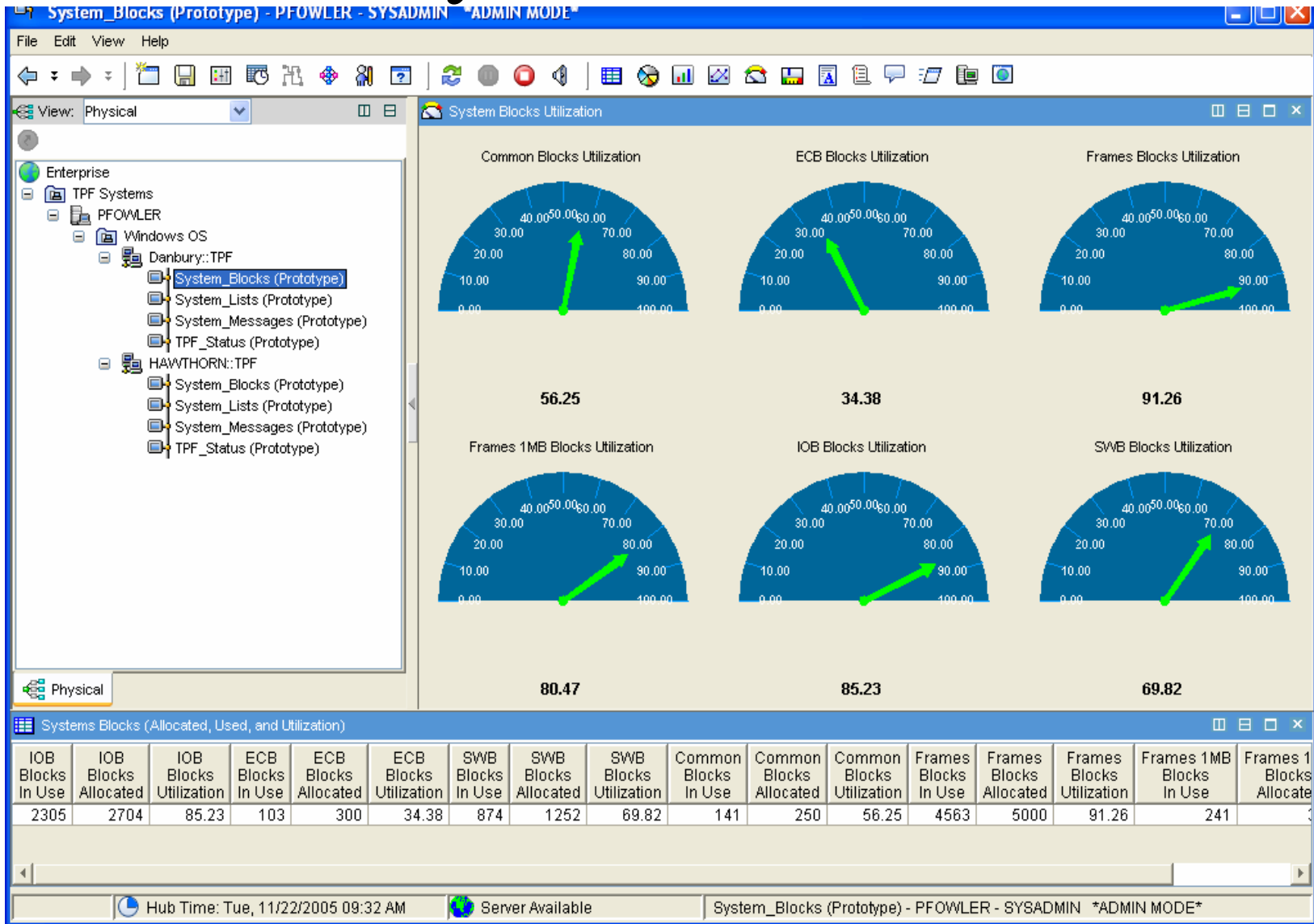
Processor Utilization for each monitored system

Status information for each monitored system

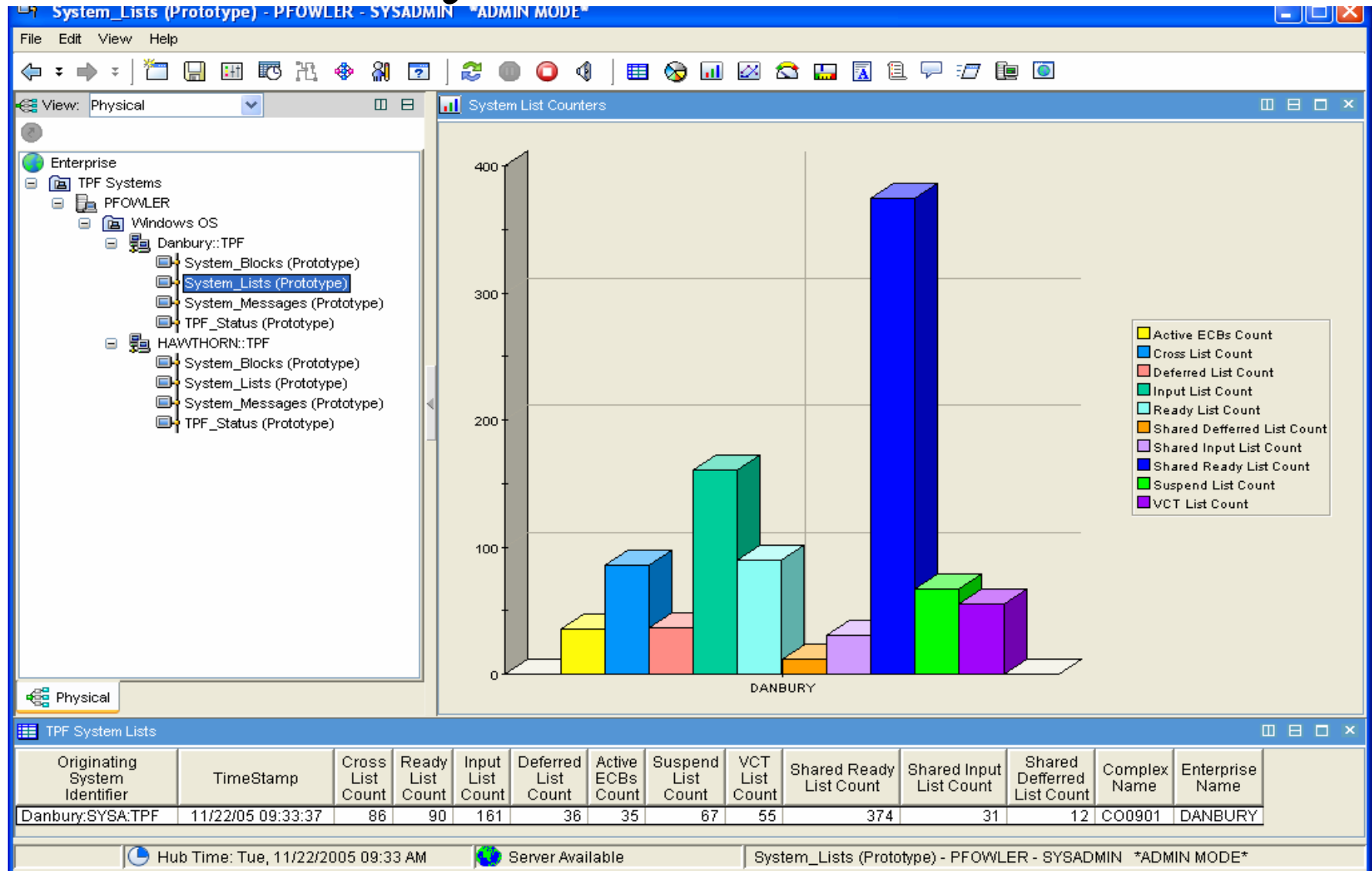
Enterprise Name	Complex Name	TPF Release	Program Update Tape Identifier	CPU Serial Number	CPU Machine Type	CPU Identifier	Subsystem Count	Subsystem User Count	Usable CPUs On LPAR	Collector Start Time	TimeStamp
HAWTHORN	CO0822	1.1.0	PUT01	FF02177F	2084342	A	4	0	1	11/17/05 12:03:16	11/22/05 09:25:32
DANBURY	CO0901	1.1.0	PUT01	FF02153F	2084342	A	4	16	8	11/03/05 16:45:33	11/22/05 09:25:32

Hub Time: Tue, 11/22/2005 09:25 AM Server Available TPF Systems - PFWLER - SYSADMIN *ADMIN MODE*

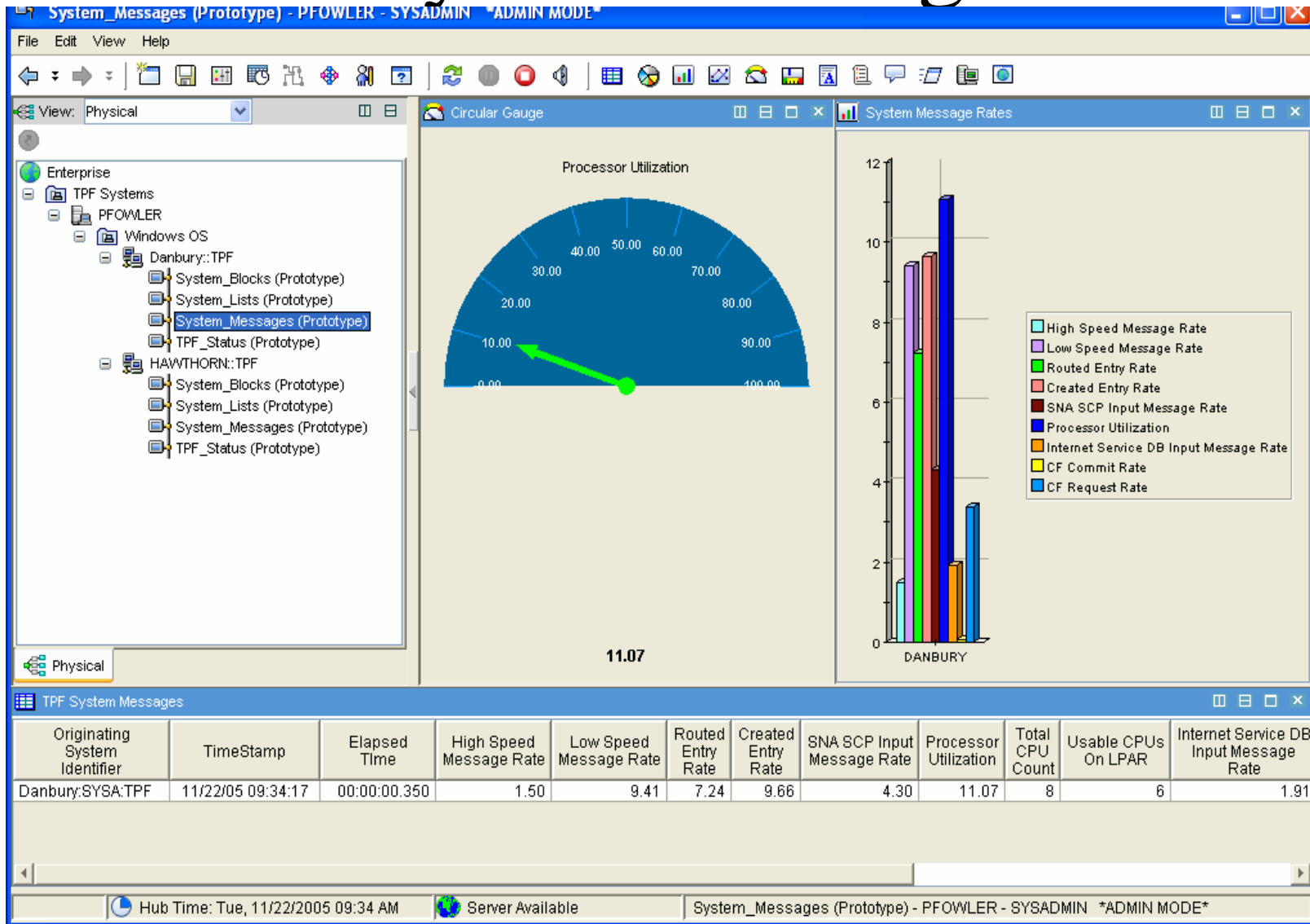
System Blocks



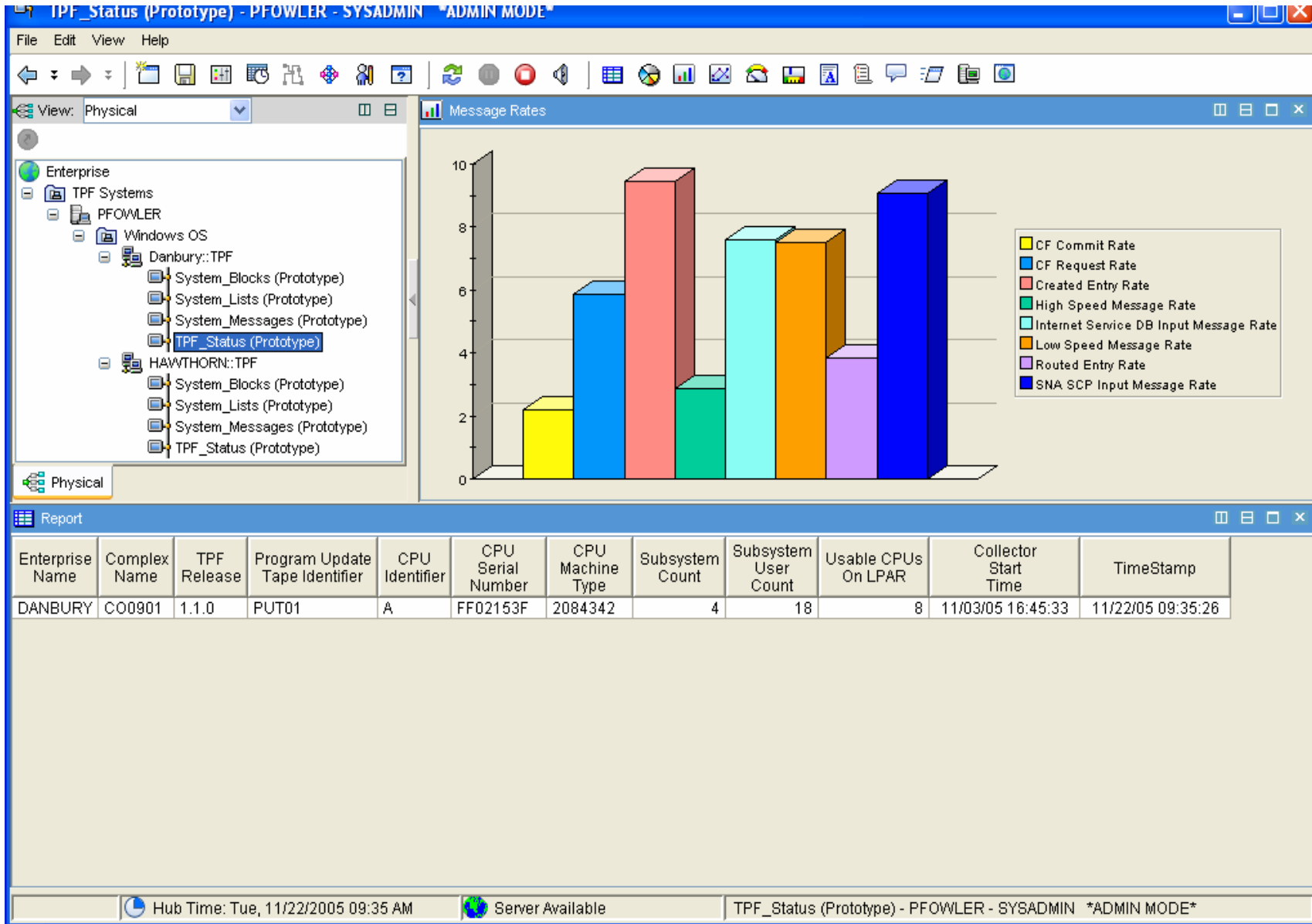
System Lists



System Messages



TPF Status



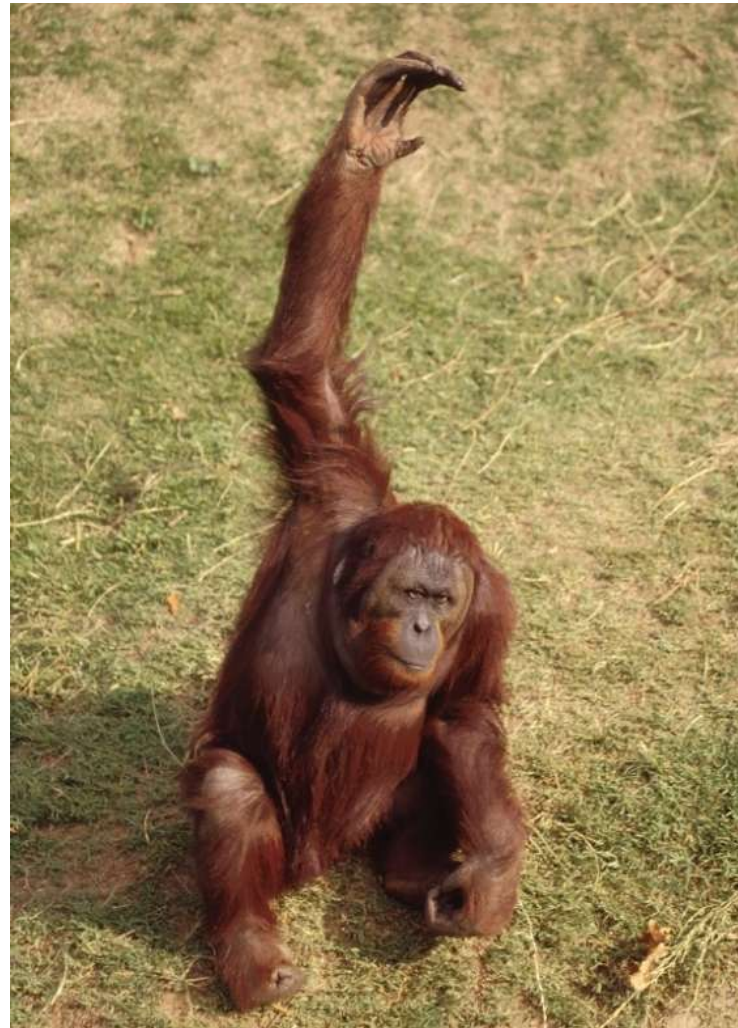
Benefits of Tivoli Enterprise Portal Integration

- Integration with an Enterprise Wide Monitoring solution
- A mature user interface that is able to provide:
 - User customizable views and displays (i.e. Workspaces)
 - The ability to set alerts on any metric that is contained within the ODI definitions (TEP calls these Situations)
 - User can also set reactions to situations
 - The ability to relate different situations across your enterprise with a construct known as TEP Policies.
 - The user can represent data in a variety of forms:
 - Tables
 - Charts:
 - Line charts
 - Bar charts
 - Pie charts
 - Etc.
 - In order for the user to take advantage of all of the TEP Framework function, no code needs to be written
- With future work, TPF applications could also be monitored through a TEP Workspace. For instance, a TPFMQ or a TPF Mail Server Workspace could be added.
- TPF would be included under the Tivoli umbrella of monitored systems.

Next Planned Steps

- End to end prototype planned as next phase.
- Verify Tivoli Enterprise Portal for TPF as a replacement of the current CDC client.

Questions



Trademarks

IBM, Omegamon, TEP, TEPS, and TEMS are trademarks of International Business Machines Corporation in the United States, other countries, or both.

Java and all Java-based trademarks are trademarks of Sun Microsystems, Inc. in the United States, other countries, or both.

Microsoft, Windows, Windows NT, and the Windows logo are trademarks of Microsoft Corporation in the United States, other countries, or both.

Linux is a trademark of Linus Torvalds in the United States, other countries, or both.

UNIX is a registered trademark of The Open Group in the United States and other countries

Other company, product, or service names may be trademarks or service marks of others.

Notes

All customer examples cited or described in this presentation are presented as illustrations of the manner in which some customers have used IBM products and the results they may have achieved. Actual environmental costs and performance characteristics will vary depending on individual customer configurations and conditions.

This publication was produced in the United States. IBM may not offer the products, services or features discussed in this document in other countries, and the information may be subject to change without notice. Consult your local IBM business contact for information on the product or services available in your area.

All statements regarding IBM's future direction and intent are subject to change or withdrawal without notice, and represent goals and objectives only.

Information about non-IBM products is obtained from the manufacturers of those products or their published announcements. IBM has not tested those products and cannot confirm the performance, compatibility, or any other claims related to non-IBM products. Questions on the capabilities of non-IBM products should be addressed to the suppliers of those products.

Prices subject to change without notice. Contact your IBM representative or Business Partner for the most current pricing in your geography.

This presentation and the claims outlined in it were reviewed for compliance with US law. Adaptations of these claims for use in other geographies must be reviewed by the local country counsel for compliance with local laws.