



IBM Software Group, TPF Support and Services

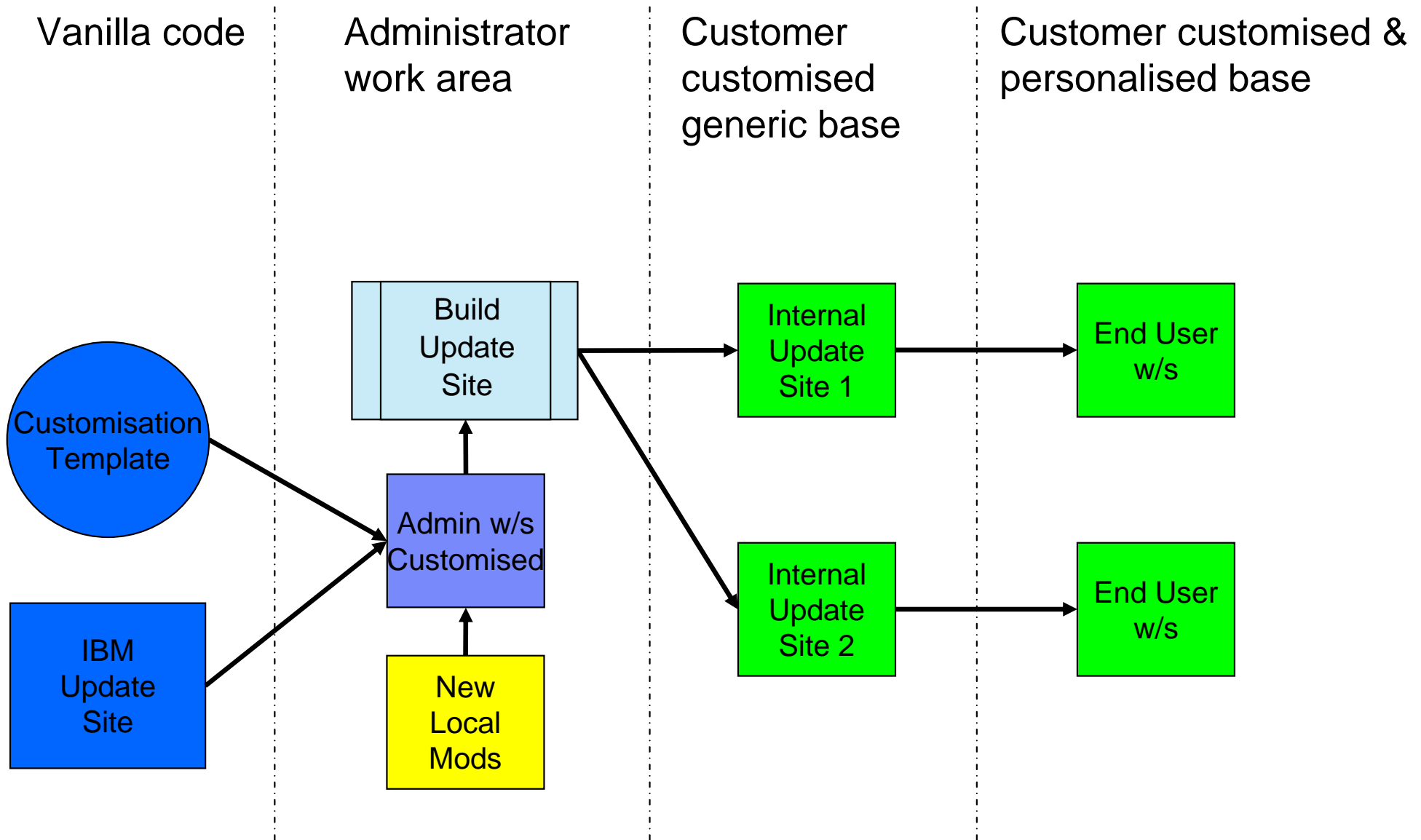
TPF Users Group May 2006

TPF Toolkit for WebSphere Studio V3 Using an Internal Update Site

Anthony Lawrence
IBM United Kingdom Limited

© Copyright International Business Machines Corporation 2006. All rights reserved. IBM and its logo are trademarks of the IBM Corporation. This document may not be reproduced in whole or in part without prior written permission of IBM.

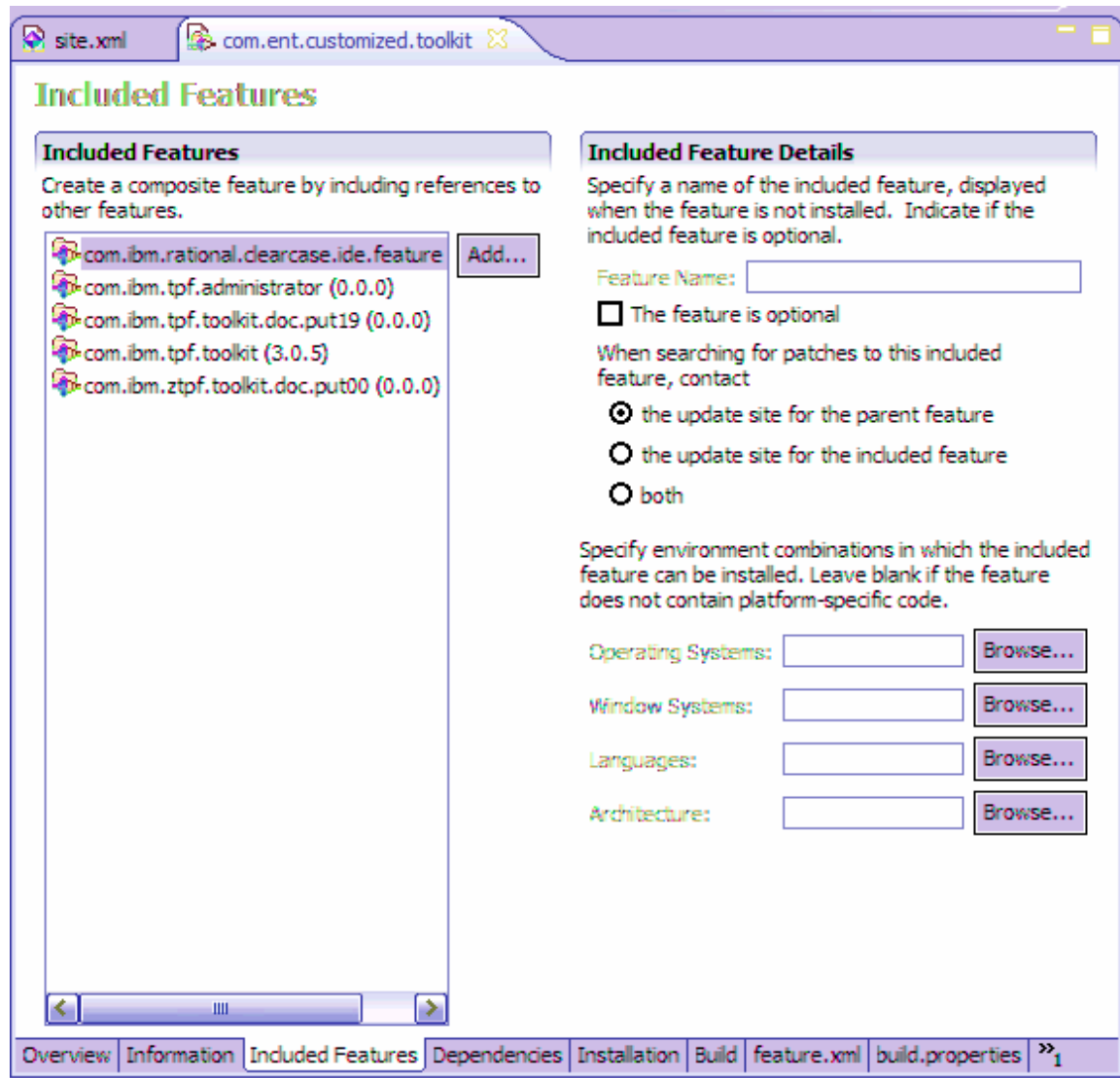
The process



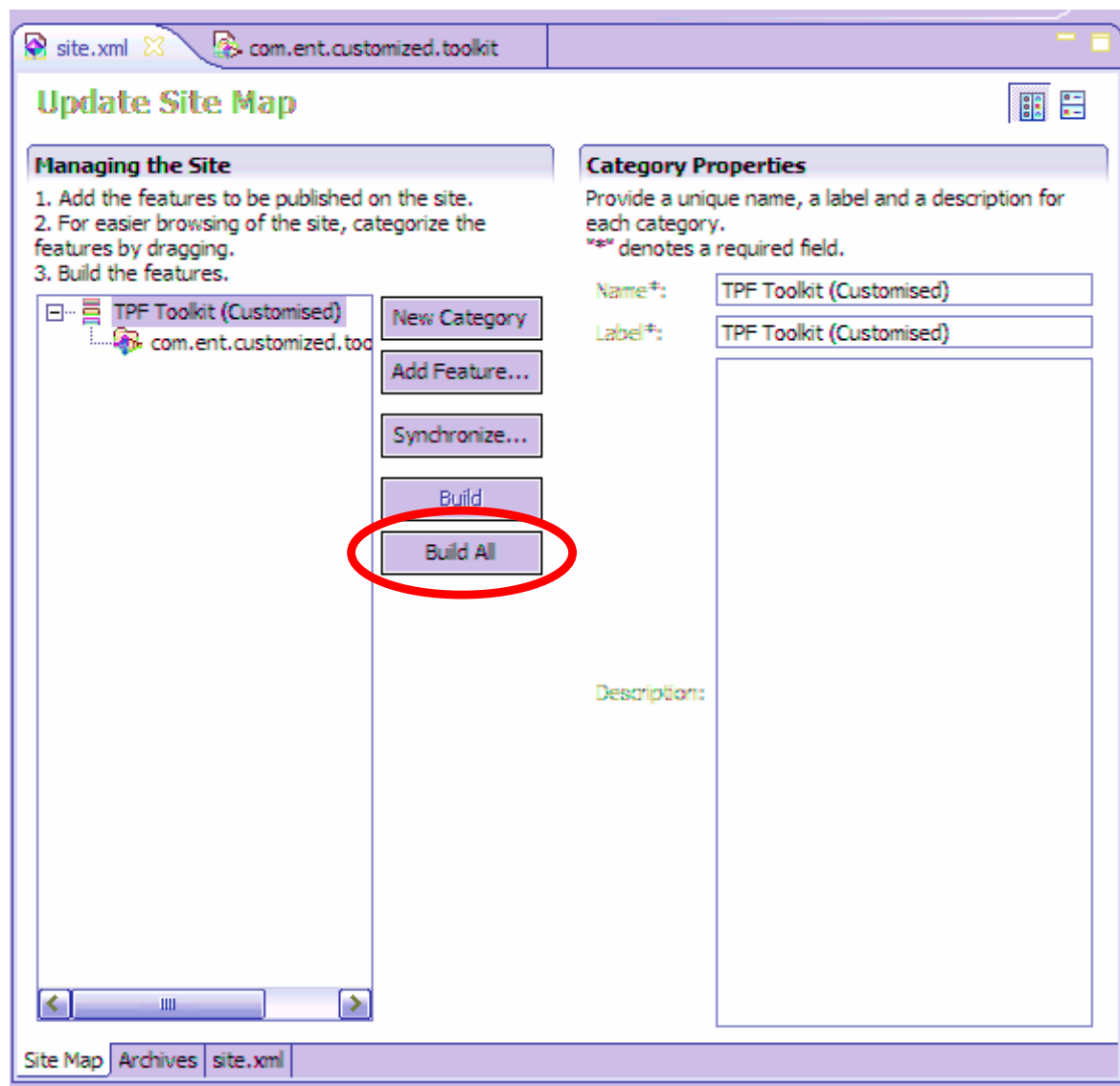
The process ...

- Make customisations to the Admins copy as required**
 - IBM Interim fixes
 - Enterprise customisations
 - Help
 - Etc
- Unzip Update Site skeleton projects (can be found in the help)**
- Open the Plug-in Development perspective and import the skeleton projects**
- Copy all modified files to the Deploy folder and update the ENT_xxxxx.txt files as appropriate**
- Set the location of the Update Site in project and build it**
- Test the new site**

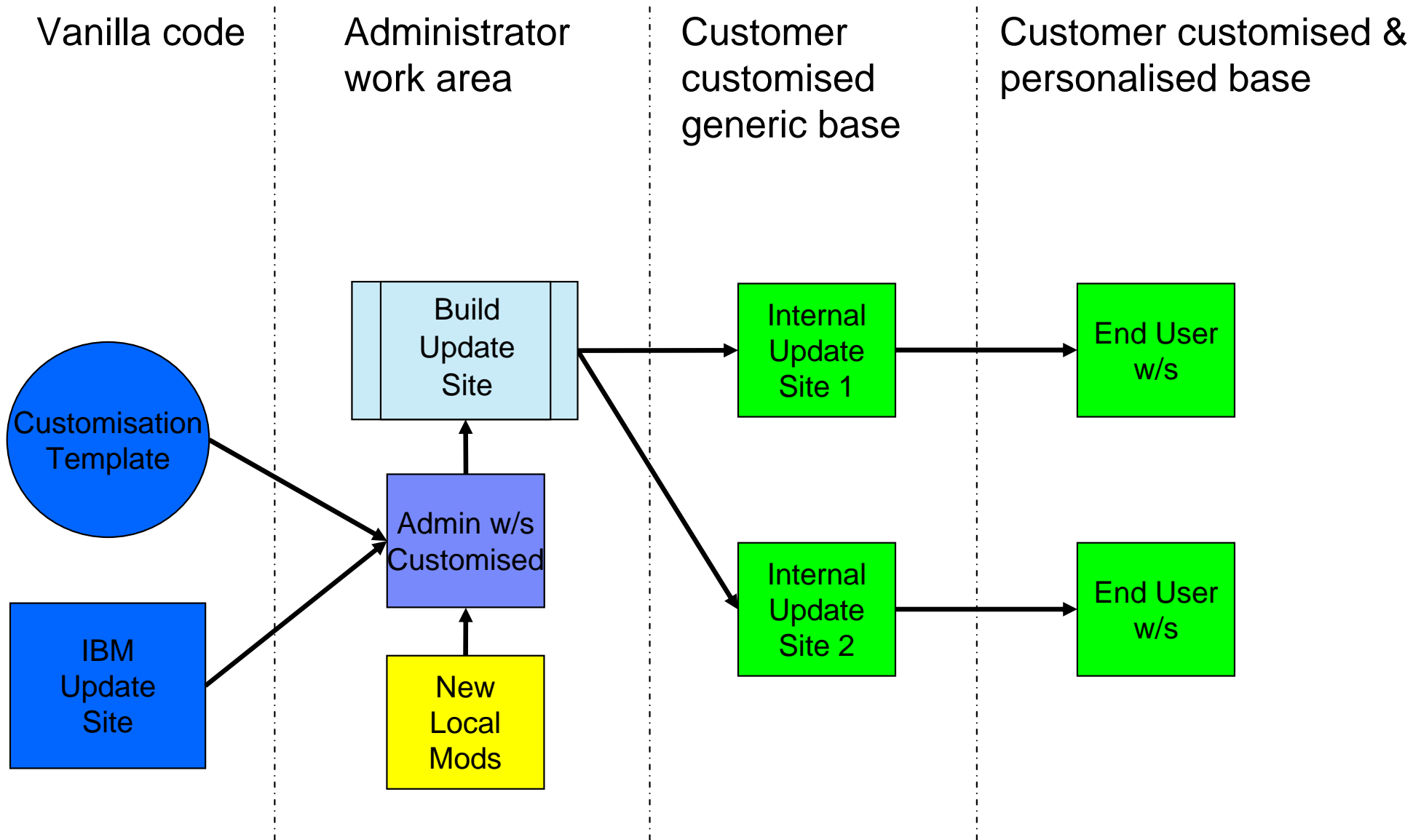
Including Features – feature.xml



Building the site



The process



Why set an Automatic Update Policy?

- Users do not have to remember to perform the updates**
- Administrators do not need to send e-mails with instructions**
 - Use the Welcome experience to detail what is new if necessary
- Set it to check for updates every time the instance starts, not on a specific day/time**
 - Some preference files can be overwritten
 - If user opens a preference file before the update is done, when the instance closes, eclipse may write the preference file out

Update Site Policy file

- ❑ **Allows the administrator to override the default location of updates without having to edit the URL in the feature.xml file of each included feature**

- ❑ **The Update site must contain all the features in you installation**
 - Eclipse will try to access the URL in the feature.xml file of those features not found in your update site
 - Make sure you add all the optional features in the Update site build stage

Update Site Policy file ...



TPF Toolkit
(Eclipse)

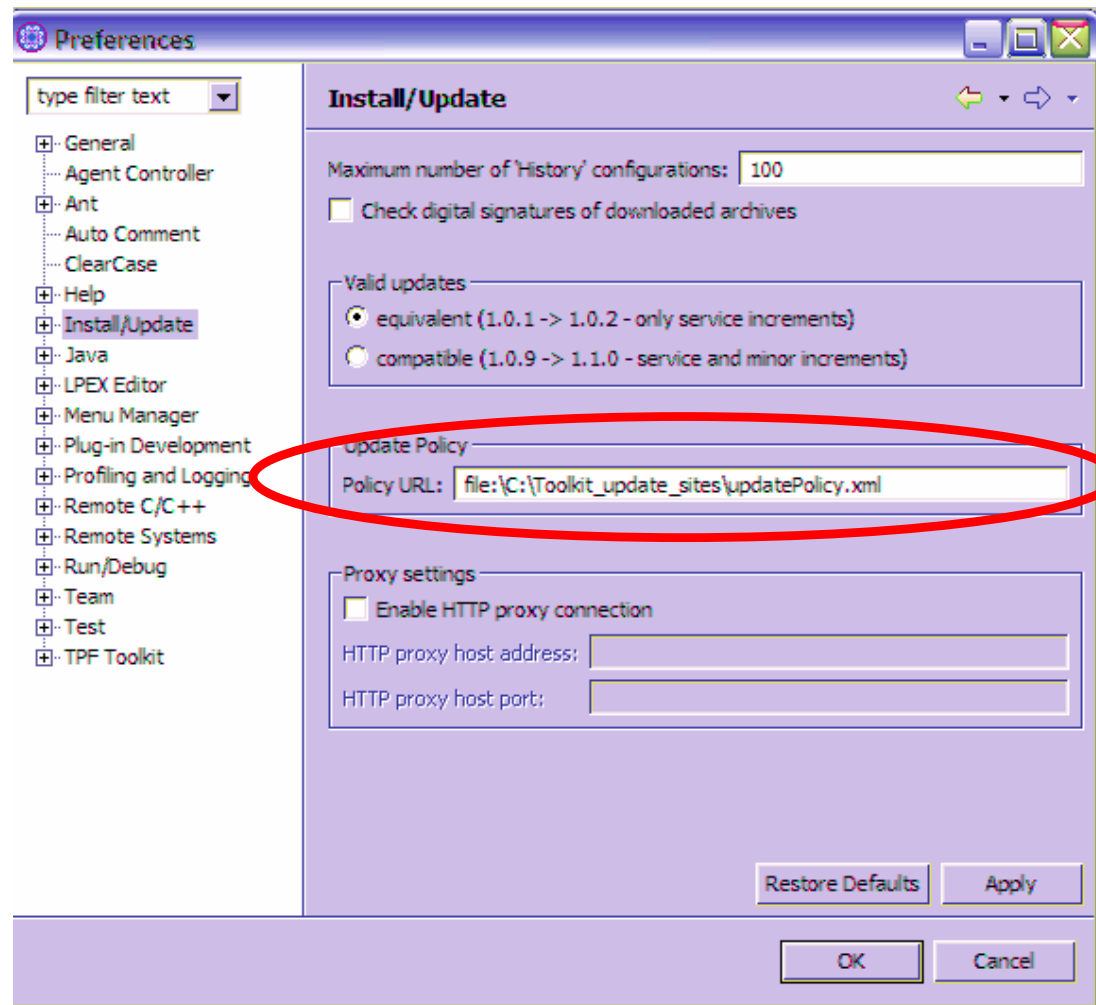


policy.xml



Update site

Update Site Policy file – TPF Toolkit (eclipse)



`%workspace%\metadata\plugins\org.eclipse.core.runtime\settings\org.eclipse.update.core.prefs`

Update Site Policy file – TPF Toolkit (eclipse) ...

or

Update:

`%TPFHOME%\eclipse\plugins\com.ibm.tpf.toolkit_3.0.x\plugin_customization.ini`

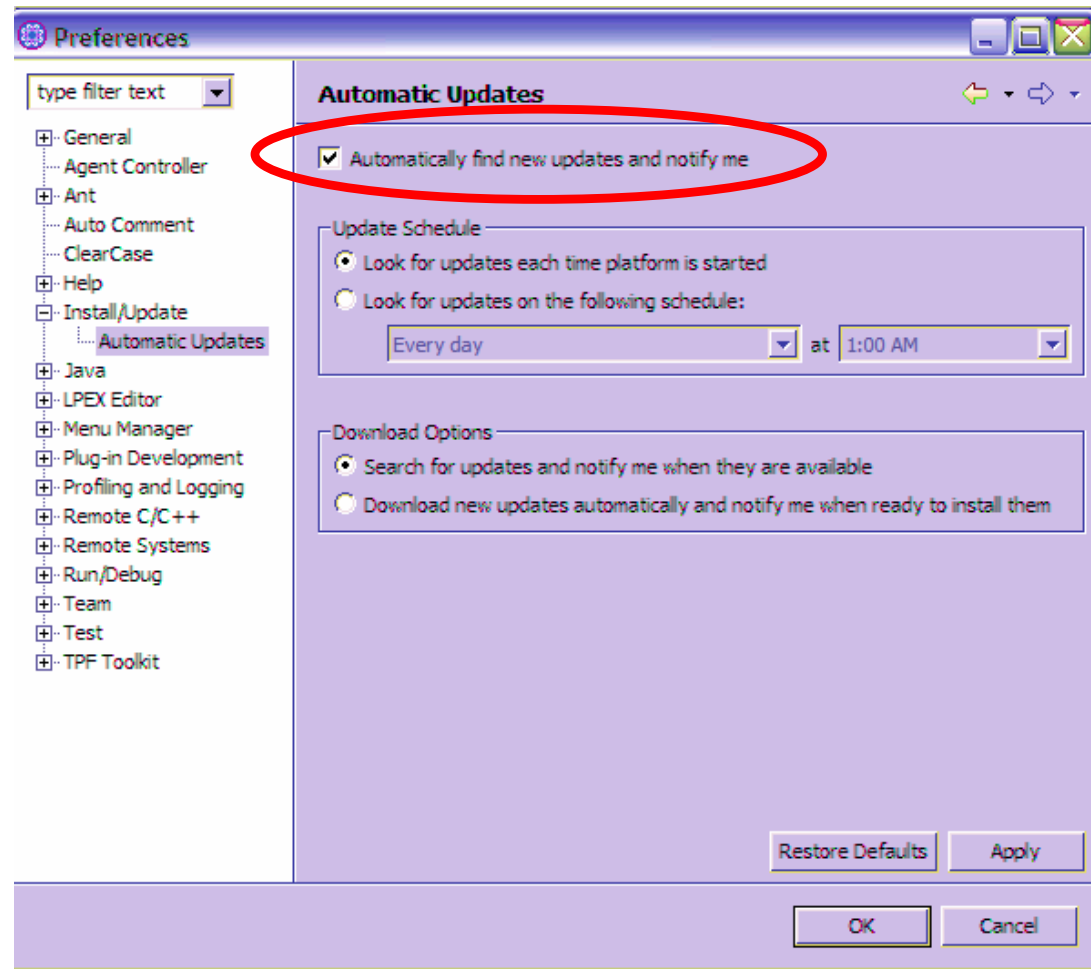
Add the following:

`org.eclipse.update.core/updatePolicyURL=file: \\C: \\Toolkit_update_sites \\updatePolicy.xml`

or

`org.eclipse.update.core/updatePolicyURL=http: \\website.com \\updatePolicy.xml`

Update Site Policy file – TPF Toolkit (eclipse) ...



`%workspace%\metadata\plugins\org.eclipse.core.runtime\settings\org.eclipse.update.scheduler.prefs`

policy.xml

```
<?xml version="1.0" encoding="UTF-8"?>
```

```
<update-policy>
```

```
  <url-map pattern="*" url="file:/C:/Toolkit_update_sites/update_site"/>
```

or

```
  <url-map pattern="*" url="http://myweb.com/update_site"/>
```

```
</update-policy>
```

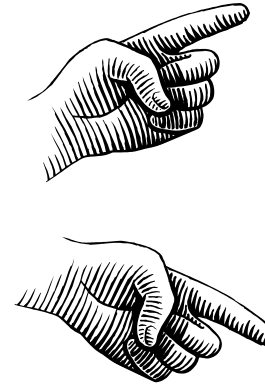
Update Site Policy file



TPF Toolkit
(Eclipse)



policy.xml



Update site 1



Update site 2

The End

anthony_lawrence@uk.ibm.com

Trademarks

- ❑ IBM and WebSphere are trademarks of International Business Machines Corporation in the United States, other countries, or both.
- ❑ Java and all Java-based trademarks are trademarks of Sun Microsystems, Inc. in the United States, other countries, or both.

Notes

- ❑ This publication was produced in the United States. IBM may not offer the products, services or features discussed in this document in other countries, and the information may be subject to change without notice. Consult your local IBM business contact for information on the product or services available in your area.
- ❑ All statements regarding IBM's future direction and intent are subject to change or withdrawal without notice, and represent goals and objectives only.
- ❑ Information about non-IBM products is obtained from the manufacturers of those products or their published announcements. IBM has not tested those products and cannot confirm the performance, compatibility, or any other claims related to non-IBM products. Questions on the capabilities of non-IBM products should be addressed to the suppliers of those products.
- ❑ This presentation and the claims outlined in it were reviewed for compliance with US law. Adaptations of these claims for use in other geographies must be reviewed by the local country counsel for compliance with local laws.