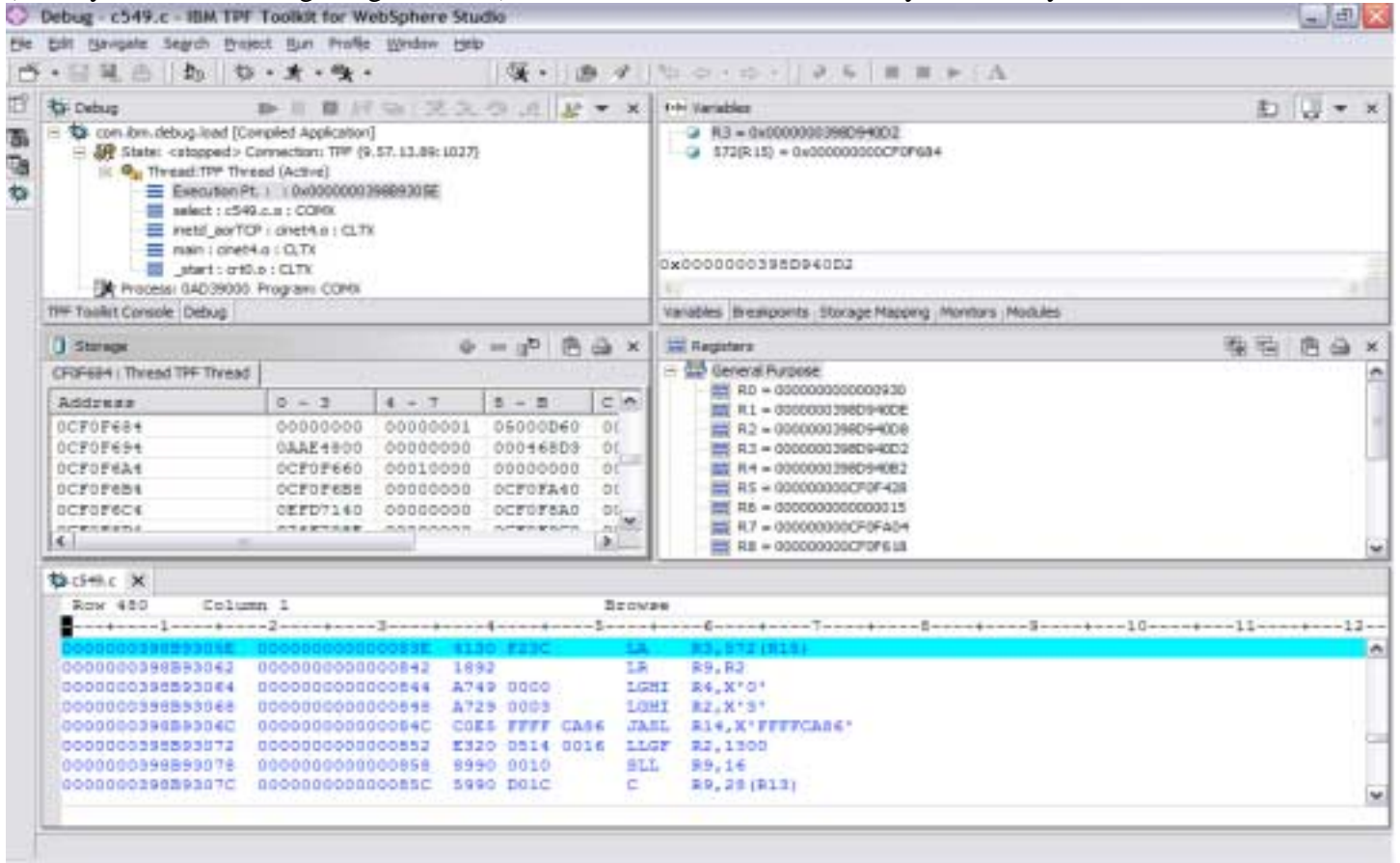


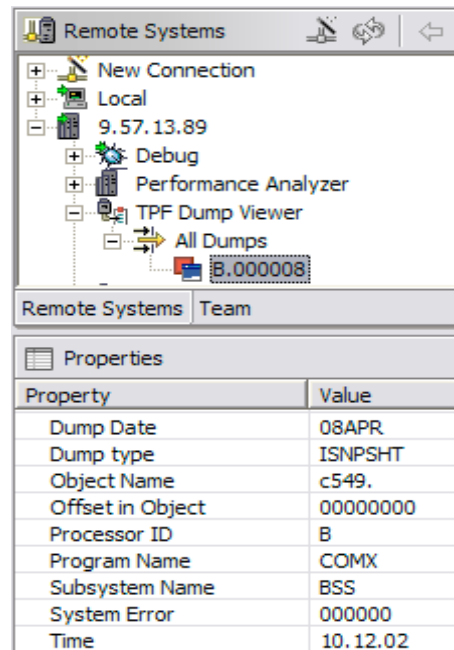
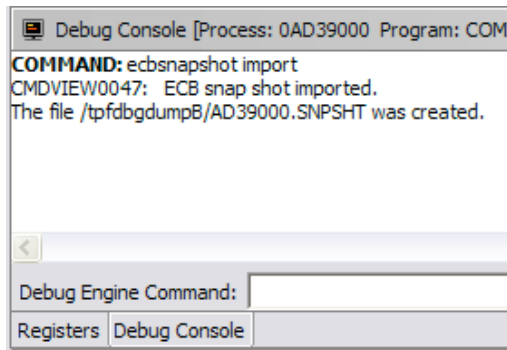
# How do I use the ECB Monitor?

**What is the ECB Monitor?** The ECB Monitor allows the user to view a snap shot of a running ECB. When the chosen ECB is dispatched from the ready list, the z/TPF debugger dump capturing facility is used to create a snap shot file of the ECB. Once the snap shot file is written, the ECB Monitor viewer comes up allowing the user to view the state of the ECB. A user can view variables, view storage, view ECB private area, explore the stack and etc. A user can not use any execute functionality (step, run, breakpoints, etc.) or change the state (modify variables, storage, registers, etc) because the session is backed by file, not by a real ECB.



## How do I save a snap shot for later viewing?

Enter “ecbsnapshot import” in the Debug Console to save the ECB snap shot to the dump records. For more information on the “ecbsnapshot” command, enter “ecbsnapshot help” in the Debug Console.



To view the file, choose the correct dump in the TPF dump viewer, right click, and choose debug.

# How do I use the ECB Monitor?

**How do I start the ECB Monitor?** The ECB Monitor view is started by using the ECB Monitor RSE. Left click each ECB address to view its corresponding details in the properties view below. Choose the ECB you would like to take a snapshot, right click, and choose snapshot.

