



IBM Software Group

TPF Users Group Spring 2005

TPF Operations Server Update

Don Kallberg

Operations and Coverage Subcommittee

AIM Enterprise Platform Software

IBM z/Transaction Processing Facility Enterprise Edition 1.1.0

© IBM Corporation 2005

Any references to future plans are for planning purposes only. IBM reserves the right to change those plans at its discretion. Any reliance on such a disclosure is solely at your own risk. IBM makes no commitment to provide additional information in the future.

Agenda

- Recent enhancements
- APARs of interest
- Planned enhancements for V 1.2.03
 - June '05
- Recommended operating software
- Questions

New ESCON card support

- Luminex 3215-01 card
 - PCI/PCI-X capable
 - Short Form Factor
 - Compatible with xSeries Servers
 - Card purchased directly from Luminex
- Available in APAR IC43917
 - TOS_Patch_20050329 or later
- 9663-001 End of Marketing 12/31/04
 - End of Service planned in 5 years

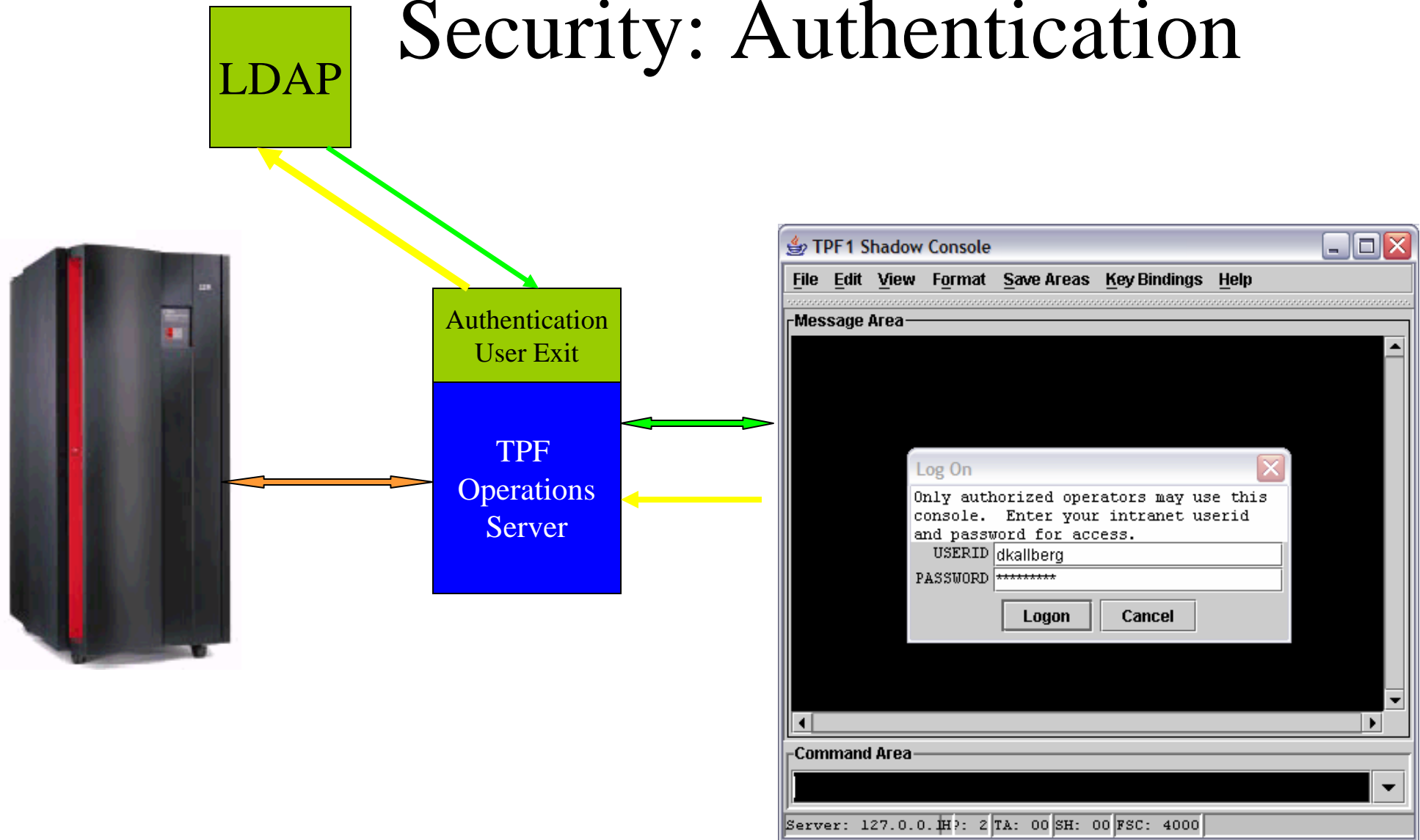
Configuring Luminex 3215-01

- Server Host Configuration (HOSTCFG.DAT)
 - Host Interface LX3215
 - Delay for ATTN's 3000
 - Adapter Number 1
 - Max. Input Delay 12000
 - Subchannel Index 0
 - MCS Identifier `
- ESCON (CHAN.CONF)
 - [control unit]
 - Configure logical path (directors/EMIF) for a range of addresses
 - 3215_Timeout = (time in seconds, match Delay for ATTN's)

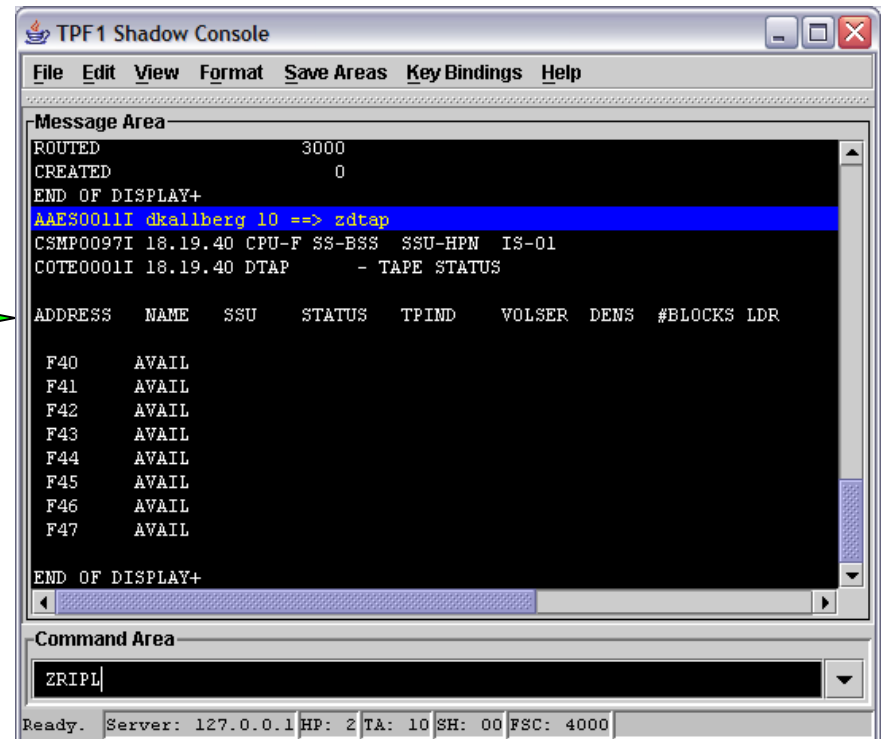
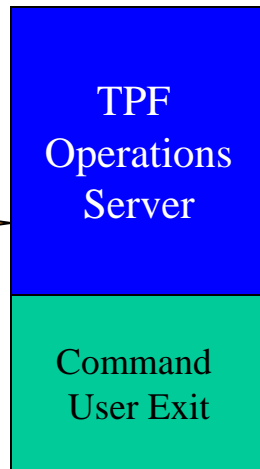
New TPF Operations Server Security Features

- Client session security
 - Authentication User Exit
 - Allow connection to existing authentication services
 - Intranet passwords/single signon/LDAP/Active Directory/etc.
 - Timeout option
- Command security
 - Server Command User Exit
- Data Security
 - Encryption/Decryption User Exit
 - Messages and commands
- User Exit samples available
- Available in APAR IC43790
 - TOS_Patch_20041222 or later

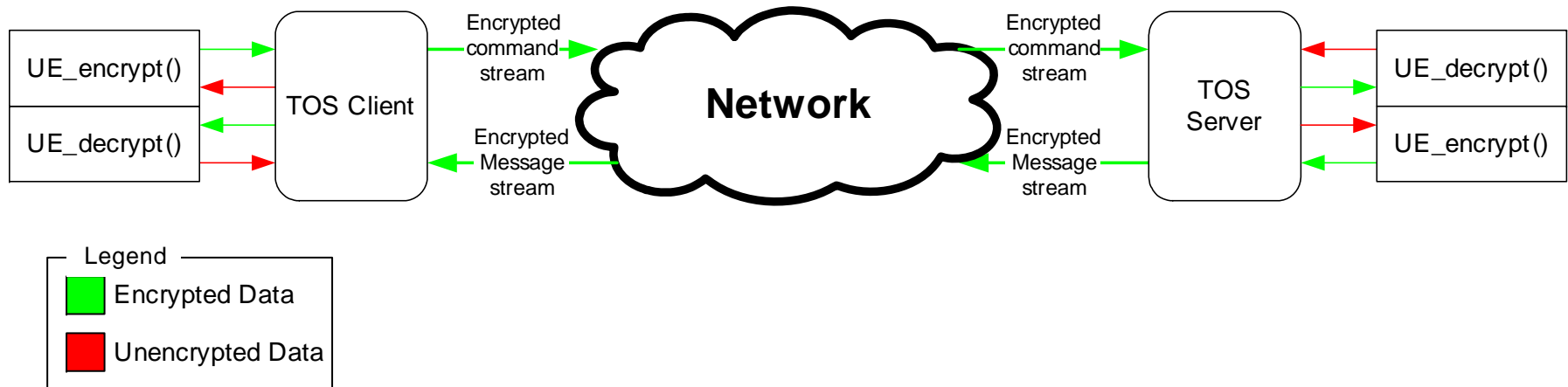
Security: Authentication



Security: Command User Exit



Encryption/Decryption option



APARs of Interest

- IC43761 - Query may return messages out of order
- IC43964 - Extraneous event log entries for QTOS
- IC44189 - LOG2FILE not handling service status request
- IC44815 - Session disconnect issue
- IC45116 - Memory reference error on server
- IC45176 - Connection.NeedBoth processed incorrectly
- Latest Patch 20050329

IC44815

- Issue with sessions disconnecting
 - Related to clock synchronizations
- Auto-reconnect (workaround)
- TPF Operations Server concurrent session startups
 - For larger environments (many client sessions)
 - Delays may be removed from startup sequences
 - Requires MS Windows Server versions
 - Windows 2003 Server
 - Windows Server 2000

TPF Operations Server V 1.2.03

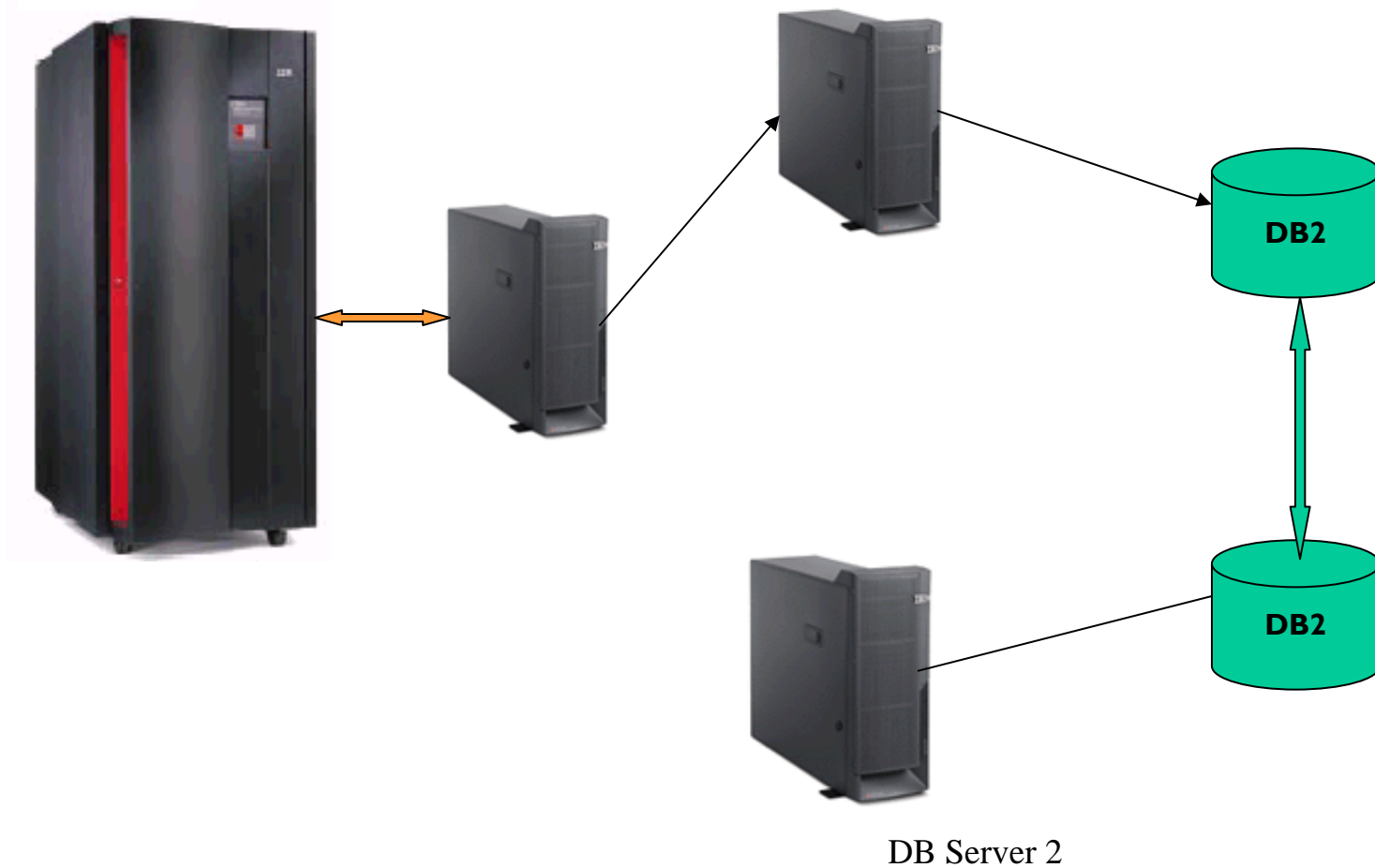
- Available in June '05
- RAVEN Enhancements
- Use of DB2 replication with the product
- Backup client session capabilities
 - Client takes over when primary client becomes unavailable

Planned RAVEN enhancements

- RAVEN log rollover
- Enhanced TDR Scripting language (RAVEN only)
- Variation names > 8 characters
- Function to receive from RAVEN queue
 - For REXX task oriented automation.

DB2 Replication

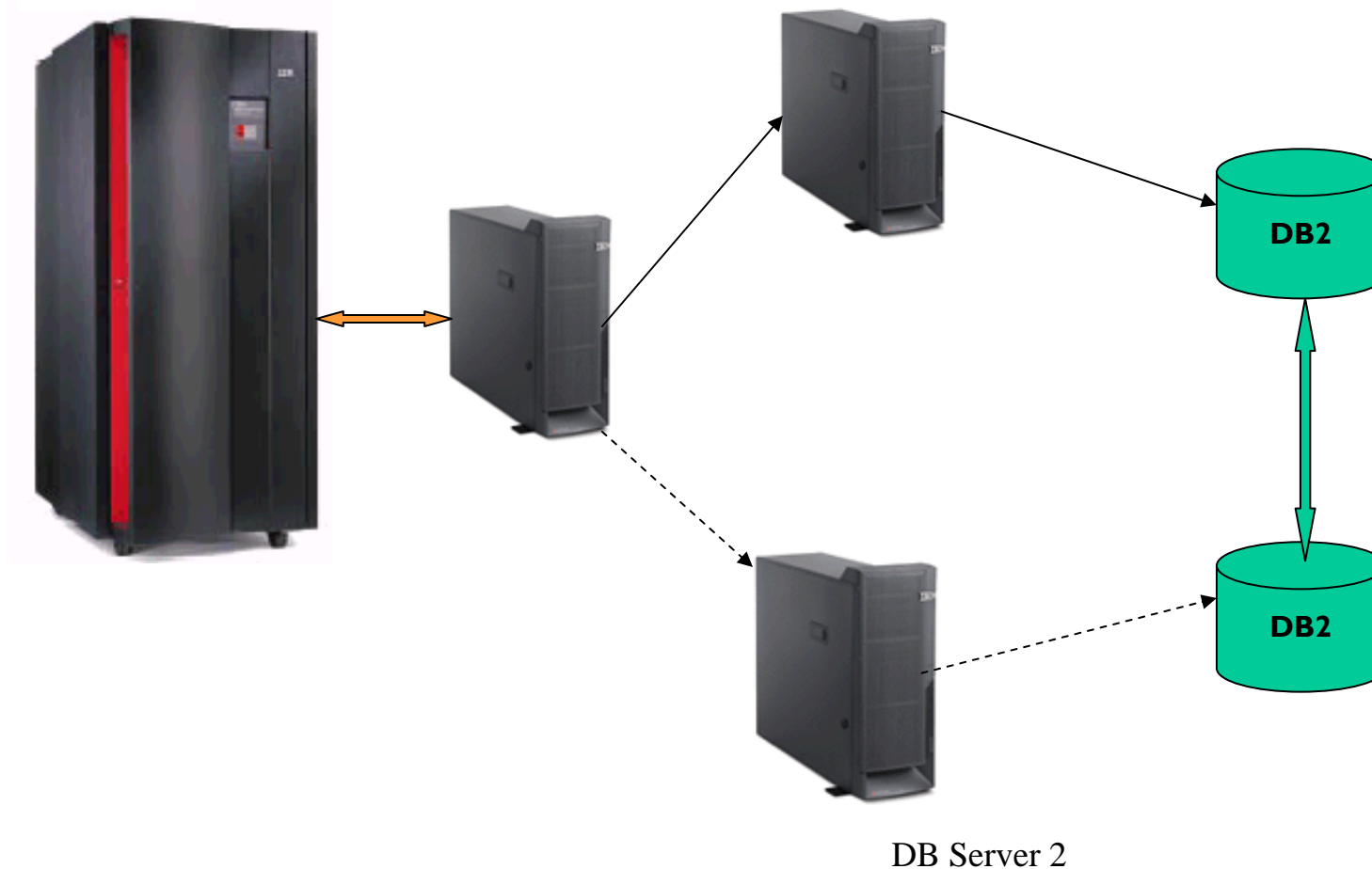
DB Server 1



DB Server 2

Backup Sessions and DB2 Replication

DB Server 1



DB Server 2

Recommended Operating Software

- Microsoft Windows 2003 Server or Windows Server 2000
 - For servers in large environments
- Microsoft Windows XP or 2000
- IBM DB2 UDB V 8.2 Workgroup Edition
 - For DB2 logging
- IBM Personal Communications 5.6 or later
 - for 3270 support
- Object Rexx
 - For RAVEN or REXX automation
 - Now open source - <http://www.oorexx.org/>
- IBM Tivoli Enterprise Console Version 3.9 or later
 - For use with TOS2TEC

TPF Operations Server Service Deliveries

- Yearly CD-ROM refreshes planned
 - TPF Operations Server Version 1.2.03 planned to be delivered June '05
- Individual APARs available on the Web
 - TPF -> SUPPORT -> MAINTENANCE
 - <http://www.ibm.com/tpf/pages/maint.htm>
 - APARs listed in the order closed
 - Unzip package and run TOSAPAR.BAT to apply.
- Patch file containing all the latest closed APARs to be available
 - TOS_PATCHyyyyymmdd.ZIP
 - Stop all TPF Operations Server programs on the workstation (including automation programs and Windows event viewer).
 - Extract and run TOS_Patch.BAT
 - Use with code delivery applications.
- EOCF/2 end of service (September 2004)
 - Contact CSR for migration information.

Questions



Trademarks

IBM, DB2, Tivoli and EOCF/2 are trademarks of International Business Machines Corporation in the United States, other countries, or both.

Microsoft, Windows and Windows NT are registered trademarks of Microsoft Corporation.

Other company, product, or service names may be trademarks or service marks of others.

Notes

Performance is in Internal Throughput Rate (ITR) ratio based on measurements and projections using standard IBM benchmarks in a controlled environment. The actual throughput that any user will experience will vary depending upon considerations such as the amount of multiprogramming in the user's job stream, the I/O configuration, the storage configuration, and the workload processed. Therefore, no assurance can be given that an individual user will achieve throughput improvements equivalent to the performance ratios stated here.

IBM hardware products are manufactured from new parts, or new and serviceable used parts. Regardless, our warranty terms apply.

All customer examples cited or described in this presentation are presented as illustrations of the manner in which some customers have used IBM products and the results they may have achieved. Actual environmental costs and performance characteristics will vary depending on individual customer configurations and conditions.

This publication was produced in the United States. IBM may not offer the products, services or features discussed in this document in other countries, and the information may be subject to change without notice. Consult your local IBM business contact for information on the product or services available in your area.

All statements regarding IBM's future direction and intent are subject to change or withdrawal without notice, and represent goals and objectives only.

Information about non-IBM products is obtained from the manufacturers of those products or their published announcements. IBM has not tested those products and cannot confirm the performance, compatibility, or any other claims related to non-IBM products. Questions on the capabilities of non-IBM products should be addressed to the suppliers of those products.

Prices subject to change without notice. Contact your IBM representative or Business Partner for the most current pricing in your geography.

This presentation and the claims outlined in it were reviewed for compliance with US law. Adaptations of these claims for use in other geographies must be reviewed by the local country counsel for compliance with local laws.