



Transaction Processing Facility

IBM TPF Operations Server Update

Don Kallberg

TPF Operations Server Update

Any references to future plans are for planning purposes only. IBM reserves the right to change those plans at its discretion. Any reliance on such a disclosure is solely at your own risk. IBM makes no commitment to provide additional information in the future.

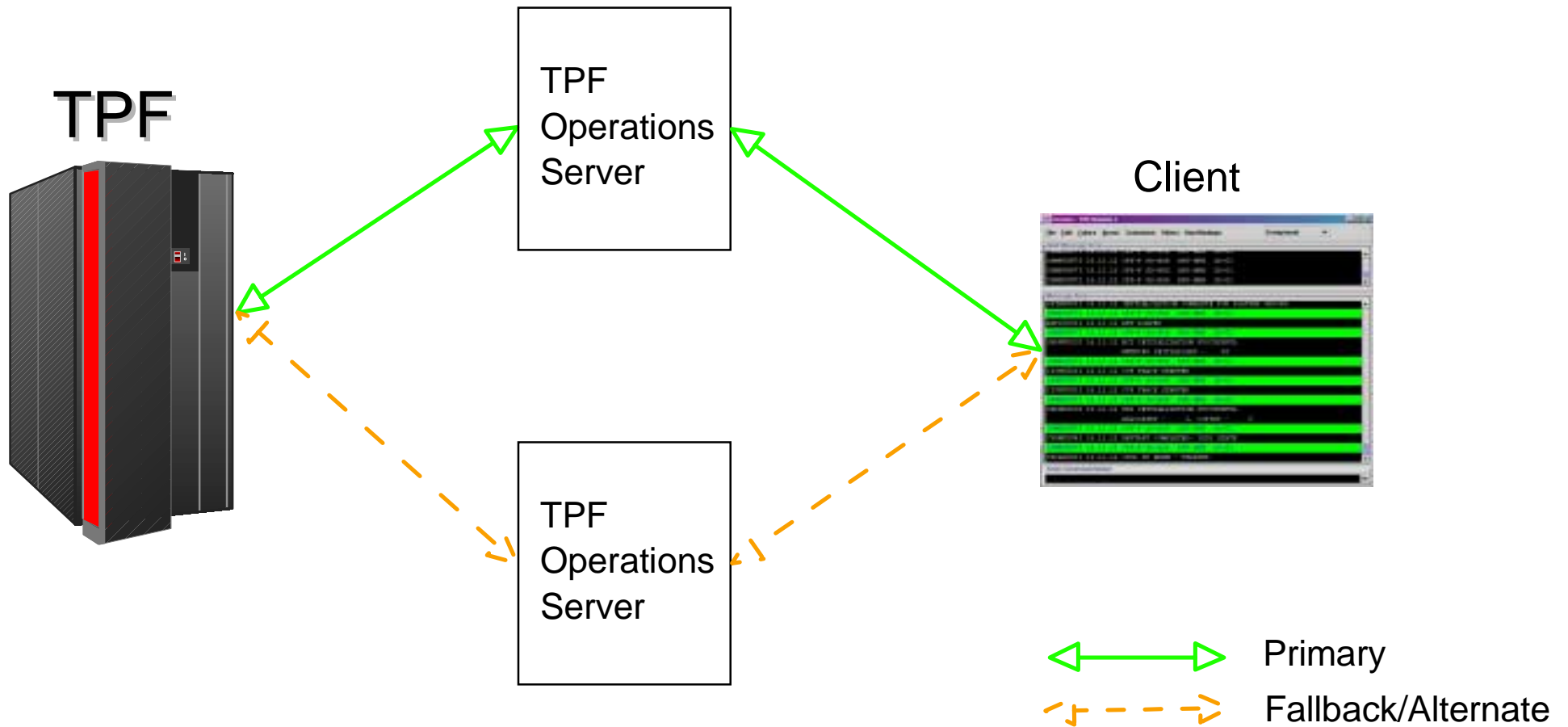
IBM, DB2, and EOCF/2 are trademarks of International Business Machines Corporation in the United States, other countries, or both.

Other company, product and service names may be trademarks or service marks of others.

Agenda

- Enhancements
 - ▶ Primary and Fallback connections
 - ▶ Automatic client reconnect
 - ▶ Configuration files for APIs
 - ▶ Interface to Netview
 - ▶ Additional automation
 - ▶ User Interface
- Other notable APARs
- TPF Operations Server V 1.2.02
- EOCF/2 End of Service
- Questions

Primary/Fallback Connection from One Client

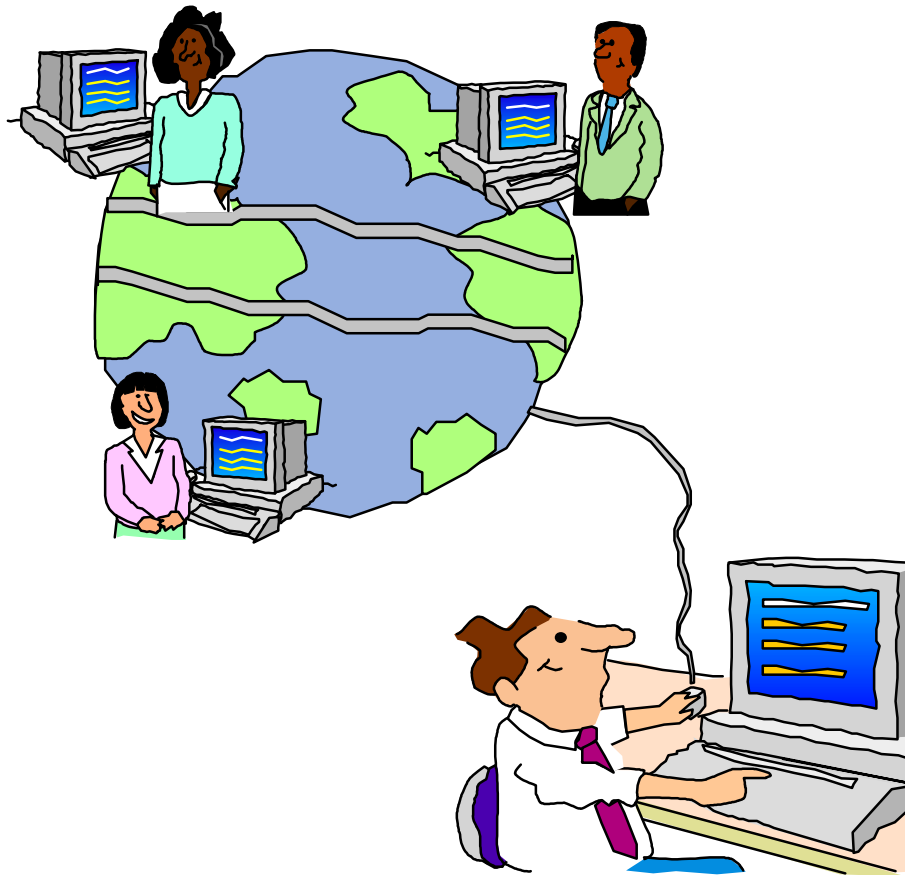


Primary/Fallback Connection from One Client

- Parameters Specified
 - ▶ connection.fbkservers
 - ▶ connection.fbkserversport
 - ▶ connection.fbkhostport
 - ▶ connection.fbkheartbeat
 - ▶ connection.fbkterminaladdress
 - ▶ connection.fbkmaxta
 - ▶ connection.fbkFSC
 - ▶ connection.fbkshadow
 - ▶ connection.fbkshadowTA
 - ▶ connection.fbktransfer

Automatic Client Reconnect Option

- Client disconnect recovers automatically



Automatic Client Reconnect Option

- Parameters specified in session configuration file
 - ▶ connection.open_num_retry
 - ▶ connection.open_sec_retry
 - ▶ connection.num_retry
 - ▶ connection.sec_retry
 - ▶ connection.fbknum_retry
 - ▶ connection.fbksec_retry

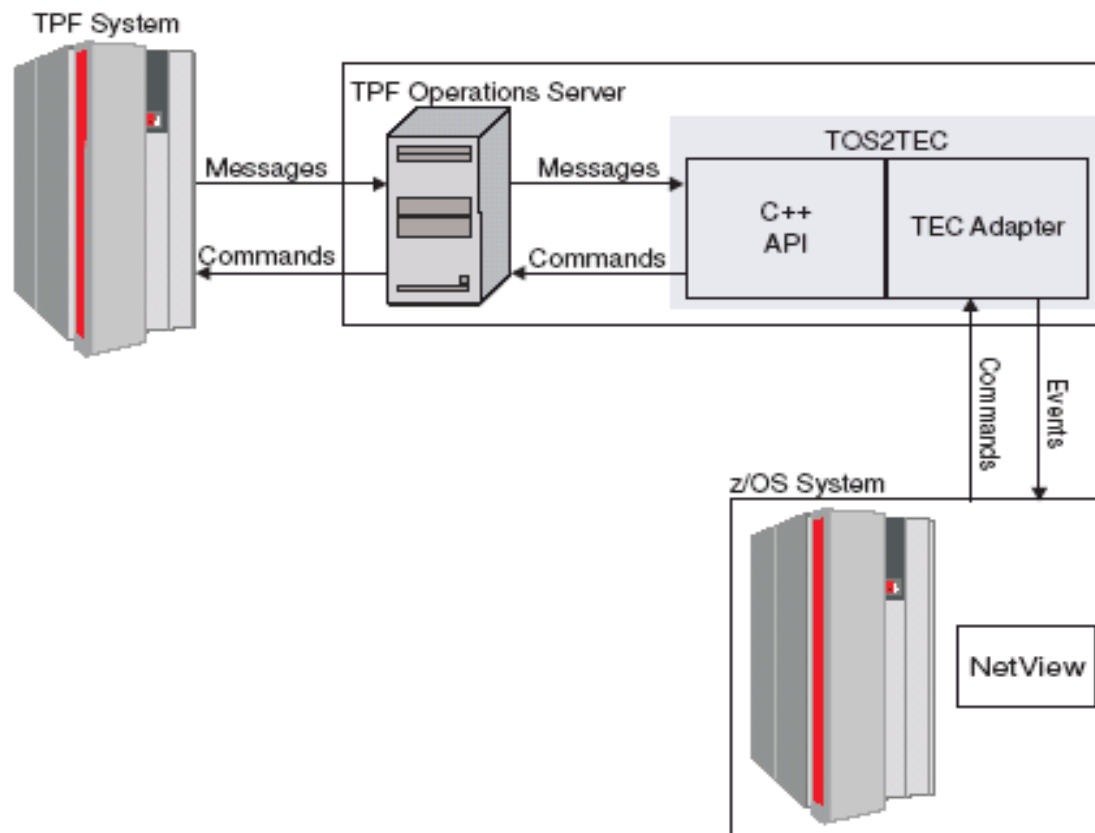
Primary/Fallback and Automatic Reconnect Options

- Support provided
 - ▶ Application Programming Interfaces (APIs) (IC38504)
 - ▶ GUI Console (IC38504)
 - ▶ RAVEN (IC39303)
 - ▶ DB2 Logging (IC39197)
 - ▶ Log2file (V 1.2.02)
 - ▶ Interface to TEC and Netview (V 1.2.02)

Configuration files for APIs

- Application Programming Interfaces
 - ▶ C++
 - unsigned int ETOSClient::Open(char *filename);
 - ▶ Java
 - int ETOSClient::Open(String filename);
 - ▶ REXX
 - RC = ETOSR_Open(filename)

Interface to Netview



Interface to Netview

- Interfaces sends TEC alerts to Netview
 - ▶ TOS2TEC client
- TEC Alerts utilize
 - ▶ Event Automation Services (EAS) of z/OS
 - ▶ Netview Problem Determination Aid (NPDA)
 - ▶ Netview Automation Tables
 - ▶ CLIST/REXX automation programs
 - ▶ Netview Console
- Rexec used to send commands.
 - ▶ Rexecd is part of TOS2TEC program.

Additional automation enhancements

- HMC utilities
 - ▶ Query partition status
 - ▶ Load (IPL) a partition
- Use API structure to route additional information
 - ▶ General use field in message structure
 - ▶ Use with route commands between clients

User Interface Enhancements

- Console search
- Command line overwrite mode
- Configurable save area colors
- Option to display status line w/hide menu (IC39360)
- New filtering options
 - ▶ Filter on TA and FSC
 - ▶ Numerical compares on fields
 - ▶ Ability to play audio files
 - ▶ Validation program for filter rule files
- GUI program to query DB2 message log

GUI Console

The screenshot displays the DANBURY.TPFNET F GUI Console. The window title is "DANBURY.TPFNET F" and it has a menu bar with "File", "Edit", "View", "Format", "Save Areas", "Key Bindings", and "Help".

The console is divided into three main sections:

- Held Message Area:** Contains three messages:
 - CBY10002W 16.13.00 MPIF DEVICE - \$CTOC11 - DISCONNECTED ON RANGE - 53A0-53AF
 - CBY10005W 16.13.00 CIO SC MOUNT ERROR - UNDEFINED SDA(S):
53A0 53A2 53A4 53A6 53AC 53AE
 - UFDH0002W 16.13.12 QUEUE PROCESSING ALREADY STARTED
- Message Area:** Displays system status and resource usage.

STAT0010I 16.10.57 SYSTEM STATUS DISPLAY					
	IOB	FRAME	COMMON	SUB	ECB
ALLOCATED	1136	600	287	256	399
AVAILABLE	1134	549	282	245	396

SYSTEM HEAP FRAMES	
	38

ACTIVE ECBS	
DLY/DFR ECBS	0
PROCESSED	0
LOW SPEED	0
ROUTED	0
CREATED	6170
SNA	0

BSS SUBSYSTEM COUNTS FOR 1 SUBSY	
ACTIVE ECBS	3
DLY/DFR ECBS	0
PROCESSED	3869
LOW SPEED	0
ROUTED	3869
CREATED	0

END OF DISPLAY+
- Command Area:** A text input field for entering commands.

A "Find" dialog box is open over the Message Area, with the following details:

- Find:** ACTIVE
- Options:**
 - List Lines Containing String
 - Match Case
 - Wrap Search
- Direction:**
 - Forward
 - Backward
- Buttons:** Find Next, Cancel

The status bar at the bottom shows "Ready." and system parameters: "Server: localhost HP: 2 TA: 00 SH: 00 FSC: 4000".

Database Query

The screenshot shows a Windows-style dialog box titled "TPF Operations Server DB2 Query". It contains several input fields and checkboxes for configuring a database query. The fields are: File name (c:\test.log), Database name (MESSAGES), Table (DEKTP.TOSLOG), User ID (kallberg), Password (masked with asterisks), Timestamp type (Client time), Start time (2004 May(5) 6 12:00:00 PM), End time (checked "Specify end time", 2004 May(5) 6 06:00:00 PM), TPF image name (DANBURY.TPFNET), TPF CPU ID (F), Message, Message ID, TOS Address, and TOS Hostport. There is also a checked checkbox for "Use short output" and a "Query" button at the bottom.

File name:	c:\test.log
Database name:	MESSAGES
Table:	DEKTP.TOSLOG
User ID:	kallberg
Password:	*****
Timestamp type:	Client time
Start time:	2004 May(5) 6 12:00:00 PM
End time:	<input checked="" type="checkbox"/> Specify end time 2004 May(5) 6 06:00:00 PM
TPF image name:	DANBURY.TPFNET
TPF CPU ID:	F
Message:	
Message ID:	
TOS Address:	
TOS Hostport:	
	<input checked="" type="checkbox"/> Use short output
<input type="button" value="Query"/>	

Other notable APARs

- RAVEN
 - ▶ IC37106 - Variation queue names > 8 characters
 - ▶ IC37986 - Execute STARTUP.VAR immediately
 - ▶ IC38215 - Correct access to INCLUDE.VAR
 - ▶ IC39065 - Auto Send function
 - ▶ IC39303 - Working directory
- Console
 - ▶ IC38792 - Parameters for -GL filter option fix
 - ▶ IC39397 - Session.conf options case insensitive
 - ▶ IC39502 - -CONFIGFILE allows full path

TPF Operations Server Service Deliveries

- Yearly CD-ROM refreshes planned
 - ▶ TPF Operations Server Version 1.2.02 planned June '04
- Individual APARs available on the Web
 - ▶ TPF -> SUPPORT -> MAINTENANCE
 - ▶ <http://www.ibm.com/tpf/pages/maint.htm>
 - ▶ APARs listed in the order closed
- Patch file containing all the latest closed APARs to be available
 - ▶ TOS_PATCHyyyymmdd.ZIP
 - Stop all TPF Operations Server programs on the workstation (including automation programs).
 - Extract and run TOS_Batch.BAT
 - Use with code delivery applications.

EOCF/2 Information

- **End of service - September 30, 2004**
- Latest Fixpak WR00977
- Fixpak and APARs since on web
 - ▶ <http://www.ibm.com/tpf/pages/maint.htm>
- Contact IBM representative for migrating to the TPF Operations Server
 - ▶ See previous TPF Users Group presentations.

TPF Operations Server

- Questions

