



TPF Toolkit

TPF Users Group – 2012 Configuration Updates

Mohammed Ajmal
TPF Toolkit Task Force

AIM Enterprise Platform Software
IBM z/Transaction Processing Facility Enterprise Edition 1.1.0

Any reference to future plans are for planning purposes only. IBM reserves the right to change those plans at its discretion. Any reliance on such a disclosure is solely at your own risk. IBM makes no commitment to provide additional information in the future.

© 2012 IBM Corporation

Disclaimer

- **Any references to future plans are for planning purposes only. IBM reserves the right to change those plans at its discretion. Any reliance on such a disclosure is solely at your own risk. IBM makes no commitment to provide additional information in the future.**

Agenda

- **Customizing TPF Toolkit**
- **Creating customizations (admin)**
- **Deploying customizations (admin)**
- **Applying customizations (user)**
- **Demo**
- **Questions**

Customizing TPF Toolkit

- **TPF Toolkit is a highly customizable product**
 - Based on Eclipse
 - Ability to install custom features that use Eclipse APIs to extend TPF Toolkit
 - Ability to set default preferences for users to provide a consistent experience for your enterprise
 - We provide several mechanisms to extend TPF Toolkit
 - TPF Toolkit API
 - Menu manager actions

Customizing TPF Toolkit

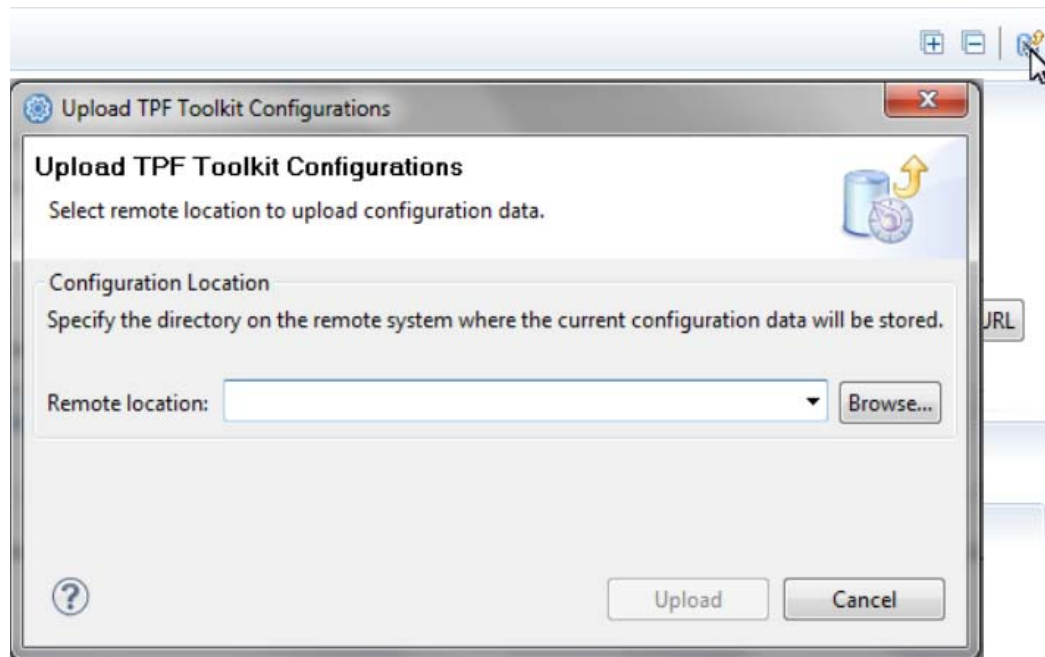
- **Administrators would create custom update sites to deploy customizations to users**
 - Allows administrators to copy/delete files to/from user workstation as part of update
 - E.g. Eclipse preference settings
 - Template files are provided to administrators:
 - ENT_after_copy_scriptname.txt
 - ENT_delete_list.txt
 - ENT_feature_delete_list.txt
 - ENT_host_copy_list.txt
 - ENT_workstation_copy_list.txt

Creating customizations (admin)

- **New TPF Configuration Project to simplify the process of creating customizations**
- **Administrators create a customization on their machine**
 - Specify any features to be installed as part of the update
 - Ability to deploy preference settings, etc. as usual
 - All the functionality of the ENT_*.txt template files is retained

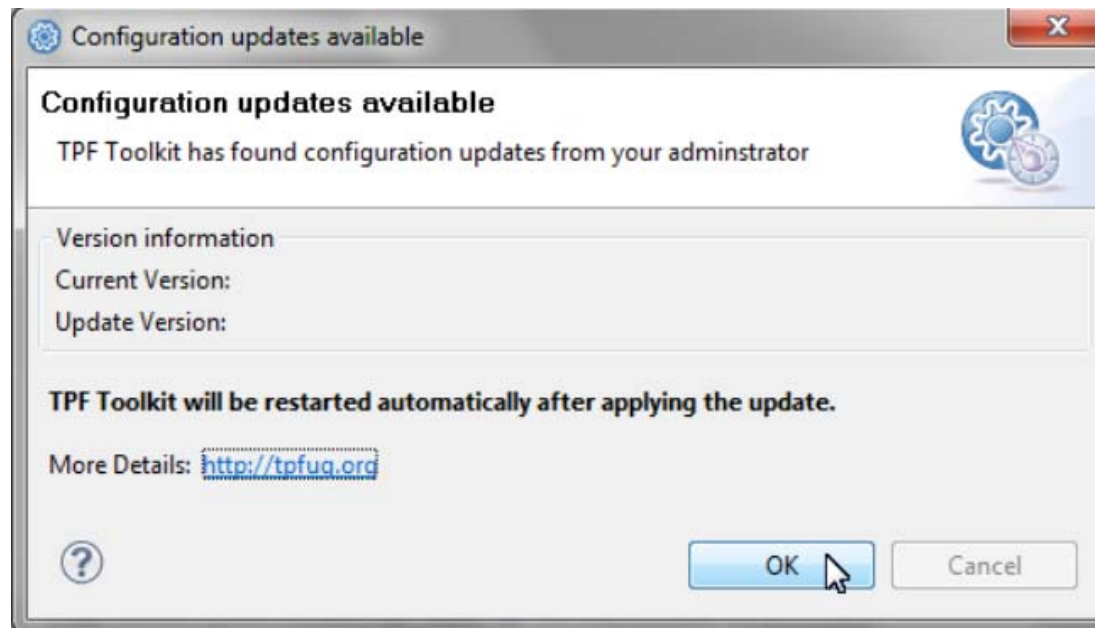
Deploying customizations (admin)

- **Simple action to upload customizations to remote host**
 - TPF Toolkit will create the update site automatically
 - TPF Toolkit will collect all the required data automatically
 - Administrator must set *config.folder* property in RSE server



Applying customizations (user)

- **When a user connects to a system where a configuration has been deployed, the user is prompted to install the update**
 - Administrator can force user to apply update



Demo – Configuration Updates

Questions

Trademarks

- IBM, the IBM logo, and ibm.com are trademarks or registered trademarks of International Business Machines Corp., registered in many jurisdictions worldwide. Other product and service names might be trademarks of IBM or other companies. A current list of IBM trademarks is available on the Web at “[Copyright and trademark information](#)” at www.ibm.com/legal/copytrade.shtml.

Notes

- Performance is in Internal Throughput Rate (ITR) ratio based on measurements and projections using standard IBM benchmarks in a controlled environment. The actual throughput that any user will experience will vary depending upon considerations such as the amount of multiprogramming in the user's job stream, the I/O configuration, the storage configuration, and the workload processed. Therefore, no assurance can be given that an individual user will achieve throughput improvements equivalent to the performance ratios stated here.
- All customer examples cited or described in this presentation are presented as illustrations of the manner in which some customers have used IBM products and the results they may have achieved. Actual environmental costs and performance characteristics will vary depending on individual customer configurations and conditions.
- This publication was produced in the United States. IBM may not offer the products, services or features discussed in this document in other countries, and the information may be subject to change without notice. Consult your local IBM business contact for information on the product or services available in your area.
- All statements regarding IBM's future direction and intent are subject to change or withdrawal without notice, and represent goals and objectives only.
- Information about non-IBM products is obtained from the manufacturers of those products or their published announcements. IBM has not tested those products and cannot confirm the performance, compatibility, or any other claims related to non-IBM products. Questions on the capabilities of non-IBM products should be addressed to the suppliers of those products.
- Prices subject to change without notice. Contact your IBM representative or Business Partner for the most current pricing in your geography.
- This presentation and the claims outlined in it were reviewed for compliance with US law. Adaptations of these claims for use in other geographies must be reviewed by the local country counsel for compliance with local laws.