

z/TPF EE V1.1

z/TPFDF V1.1

TPF Toolkit for WebSphere® Studio V3

TPF Operations Server V1.2



IBM Software Group

TPF Users Group Fall 2005

IBM TPF Product Information Center Update

Name : Brian Laferriere

Venue : Application Development Subcommittee

AIM Enterprise Platform Software

IBM z/Transaction Processing Facility Enterprise Edition 1.1.0

© IBM Corporation 2005

Any references to future plans are for planning purposes only. IBM reserves the right to change those plans at its discretion. Any reliance on such a disclosure is solely at your own risk. IBM makes no commitment to provide additional information in the future.

Live!

- New Family Libraries page
 - Easy to use
 - Tab format

- More ways to get information for different PUT levels
 - Online: current and archive
 - Information center download table
 - Information prior to TPF 4.1 PUT 16.

- Uses Eclipse Project technology.

TPF Family Libraries -> Online ICs tab

- Open current information center
 - Plug-ins for each product in the TPF family

- Open information center archives
 - New clickable archived information centers

- Date of most recent update.

TPF Family Libraries

Open current information center

- New plug-ins
 - z/TPF
 - z/TPFDF
 - z/TPF and z/TPFDF migration search
 - z/TPF man pages

- New z/TPF Program Management information unit
 - MakeTPF build solution
 - Program types and linkage
 - Loaders

- All plug-ins updated.

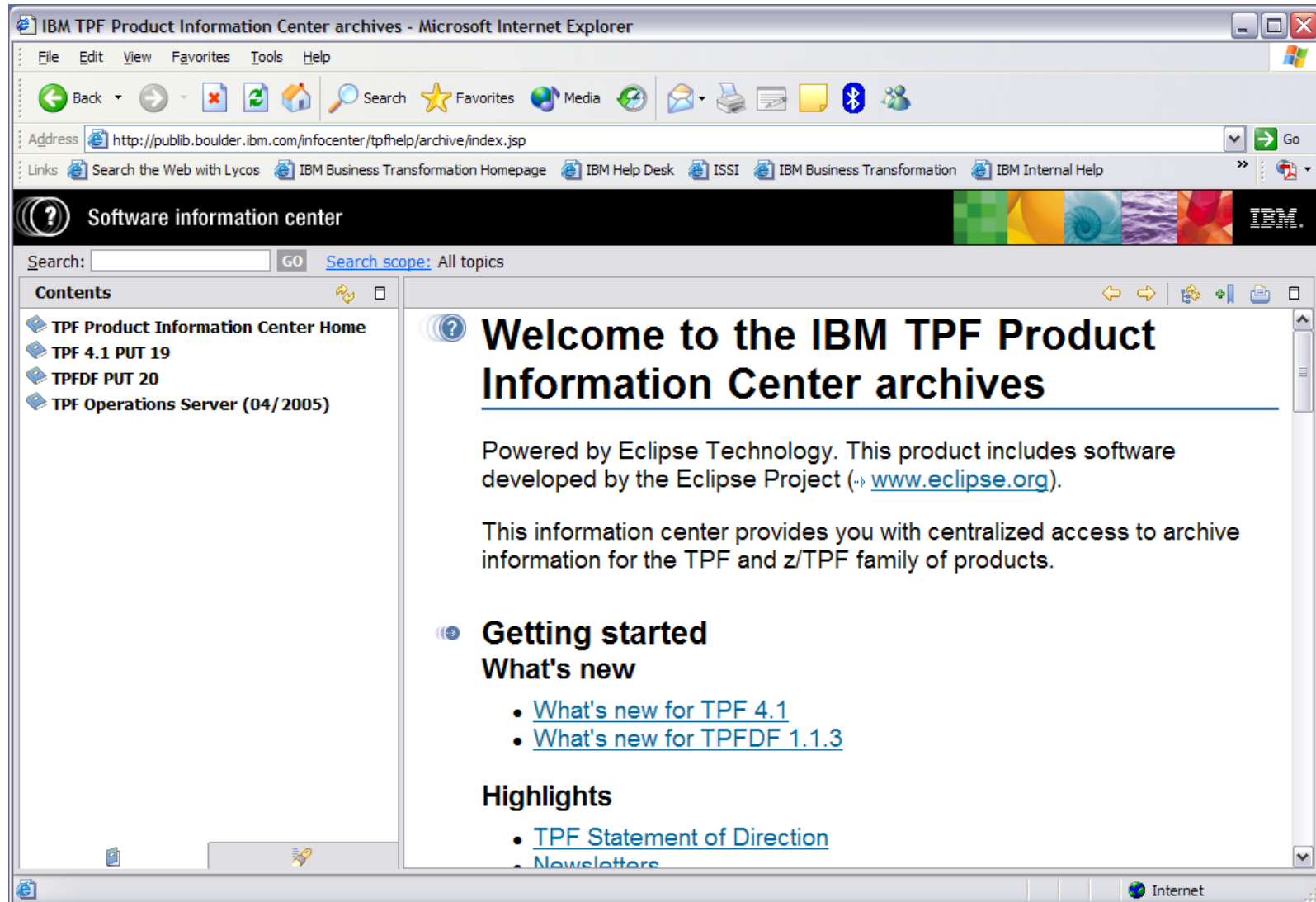
Current information center page

The screenshot shows a Microsoft Internet Explorer browser window displaying the IBM TPF Product Information Center. The address bar shows the URL: <http://publib.boulder.ibm.com/infocenter/tpfhelp/current/index.jsp>. The page title is "Software information center". The main content area features a large heading: "Welcome to the IBM TPF Product Information Center". Below this, it states: "Powered by Eclipse Technology. This product includes software developed by the Eclipse Project (www.eclipse.org). This information center provides you with centralized access to all information for the TPF and z/TPF family of products." A section titled "Getting started" includes a sub-section "What's new" with four bullet points: [What's new for z/TPF](#), [What's new for z/TPFDF](#), [What's new for TPF 4.1](#), and [What's new for TPFDF](#). A "Highlights" section is also visible at the bottom. The left sidebar contains a "Contents" menu with links to various product pages and documentation.

Open information center archives

- New archives page
 - Clickable path to previous levels of the information center (customer request).
 - Will grow to 3 archive levels for TPF 4.1, TPFDF, TPF Operations Server
 - Will grow to 6 archive levels for z/TPF, z/TPFDF.

Information center archives page



Downloadable ICs tab

- Select IC download by date
 - June 2002 download
 - TPF 4.1 PUT 16
 - TPFDF PUT 16
 - Select TPF and TPFDF bookshelf when available

- Includes current information center (customer request).

Downloadable ICs page

The screenshot shows a Microsoft Internet Explorer browser window displaying the IBM Software - Transaction Processing Facility (TPF) - Overview page. The address bar shows the URL: <http://www-306.ibm.com/software/http/tpf/pubs/DownloadableICs.htm>. The page title is "TPF Downloadable Information Center Archive Library".

The page features a navigation menu with links for Home, Products, Services & solutions, Support & downloads, and My account. A search bar is located at the top right. The main content area is titled "TPF Downloadable Information Center Archive Library" and includes a sub-menu with "Online ICs", "Downloadable ICs", and "Info Prior to PUT 16".

The main content area contains a table of downloadable editions of the IBM TPF Product Information Center. The table has the following structure:

Downloads	z/TPF	z/TPFDF	TPF 4.1	TPFDF	TPF Ops Server
September 2005	PUT 00	PUT 00	PUT 19	PUT 20	V 1.2.03
June 2005	--	--	PUT 19	PUT 20	V 1.2.02
June 2004	--	--	PUT 18	PUT 19	V 1.2.02
June 2003	--	--	PUT 17	PUT 18	V 1.2.01
June 2002	--	--	PUT 16	PUT 16	V 1.1

A "z/TPF" logo is visible to the right of the table. Below the table, a note states: "Note: To view and print the PDF files, you must have the Adobe Acrobat Reader software, which is available for free from the [Adobe Web site](#)."

Info Prior to PUT 16 tab

- Access information earlier than TPF 4.1 PUT 16 and TPFDF PUT 16
 - As early as PUT 11
- Predominant information format is BookManager.

Info Prior to PUT 16 page

IBM Software - Transaction Processing Facility (TPF) - Overview - Microsoft Internet Explorer

Address: <http://www-306.ibm.com/software/htp/tpf/pubs/PrePUT16.htm>

United States [change] Terms of use

Home | Products | Services & solutions | Support & downloads | My account

Host Transaction Processing

TPF Archive Library

Online ICs | Downloadable ICs | Info Prior to PUT 16

See the following table for editions of the product information released prior to PUT 16:

TPF 4.1	TPFDF
PUT 15	PUT 15
PUT 14	PUT 14
PUT 13	PUT 13
PUT 12	PUT 12
PUT 11	PUT 11

[TPF Operations Server](#)

[IIOP Connect for TPF](#)

Note: To view and print the PDF files, you must have the Adobe Acrobat Reader software, which is available for free from the [Adobe Web site](#).

Related links

- ALCS
- IBM TPF Toolkit for WebSphere Studio

About IBM | Privacy | Contact

Request for Information

- How do you search the IC?
 - Using the IC search? Google? Other?
- Do you generally find what you're searching for?
- Once you're in the IC, how do you generally use it?
 - Do you use the search facility?
 - Do you follow the navigation?
 - Do you go directly to the library information units?
- Do you find the Concepts, Tasks, and Reference navigation style useful?

New Requirements

- We encourage you to send us new requirements!
- Please submit through FITS or the TPFUG requirements process
 - We had the opportunity to include a couple informal customer requests with our z/TPF delivery, but all future requests will be managed through the requirements process
- Current requirements
 - Information center on Linux (FITS MR0224053252).

Trademarks

IBM and WebSphere are trademarks of International Business Machines Corporation in the United States, other countries, or both.

Eclipse is a trademark of Eclipse Foundation, Inc.

Microsoft, Windows, and the Windows logo are trademarks of Microsoft Corporation in the United States, other countries, or both.

Linux is a trademark of Linus Torvalds in the United States, other countries, or both.

Other company, product, or service names may be trademarks or service marks of others.

Notes

Performance is in Internal Throughput Rate (ITR) ratio based on measurements and projections using standard IBM benchmarks in a controlled environment. The actual throughput that any user will experience will vary depending upon considerations such as the amount of multiprogramming in the user's job stream, the I/O configuration, the storage configuration, and the workload processed. Therefore, no assurance can be given that an individual user will achieve throughput improvements equivalent to the performance ratios stated here.

All customer examples cited or described in this presentation are presented as illustrations of the manner in which some customers have used IBM products and the results they may have achieved. Actual environmental costs and performance characteristics will vary depending on individual customer configurations and conditions.

This publication was produced in the United States. IBM may not offer the products, services or features discussed in this document in other countries, and the information may be subject to change without notice. Consult your local IBM business contact for information on the product or services available in your area.

All statements regarding IBM's future direction and intent are subject to change or withdrawal without notice, and represent goals and objectives only.

Information about non-IBM products is obtained from the manufacturers of those products or their published announcements. IBM has not tested those products and cannot confirm the performance, compatibility, or any other claims related to non-IBM products. Questions on the capabilities of non-IBM products should be addressed to the suppliers of those products.

Prices subject to change without notice. Contact your IBM representative or Business Partner for the most current pricing in your geography.

This presentation and the claims outlined in it were reviewed for compliance with US law. Adaptations of these claims for use in other geographies must be reviewed by the local country counsel for compliance with local laws.