

z/TPF EE V1.1

z/TPFDF V1.1

TPF Toolkit for WebSphere® Studio V3

TPF Operations Server V1.2



IBM Software Group

TPF Users Group Fall 2005

TPF Toolkit

Mary Huang
TPF Toolkit Task Force

AIM Enterprise Platform Software

IBM z/Transaction Processing Facility Enterprise Edition 1.1.0

© IBM Corporation 2005

Any references to future plans are for planning purposes only. IBM reserves the right to change those plans at its discretion. Any reliance on such a disclosure is solely at your own risk. IBM makes no commitment to provide additional information in the future.

Agenda

- Target Environments
 - Persistence options
- Update site in V3

Target Environments

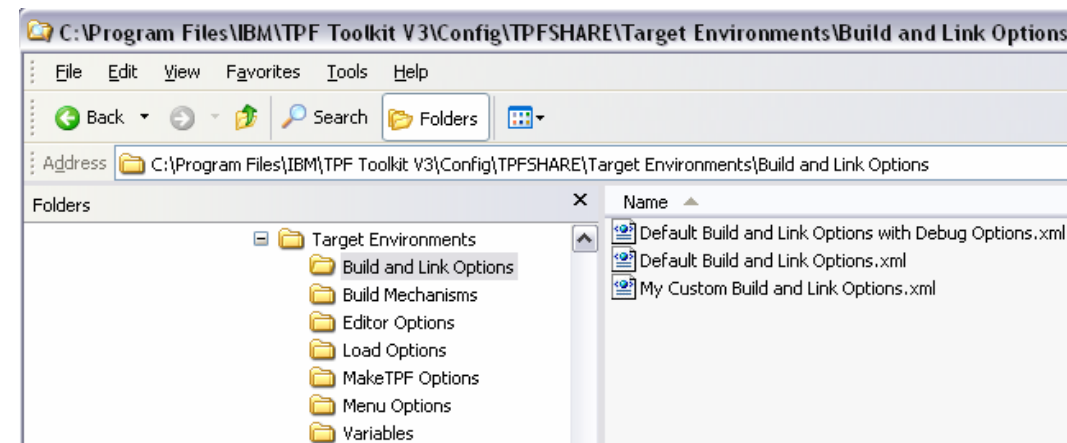
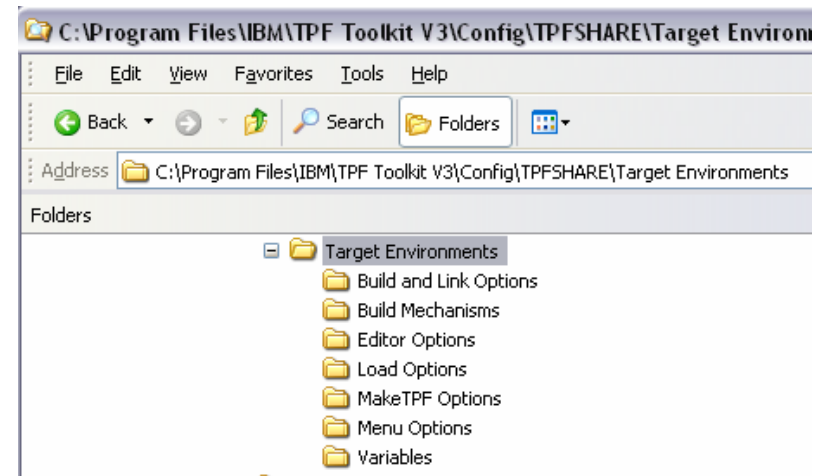
- Persistence options
 - Option 1
 - Same file as other preferences (tpf_pref.xml)
 - Current implementation
 - Option 2
 - Each definition in its individual file
 - Option 3
 - All the definitions in a separate preference file (tpf_target_envs.xml)

Target Environments

- Option 1 - Same file as other preferences
 - Current implementation
 - Pros:
 - One common place for preferences
 - Single file to maintain
 - Cons:
 - Multiple admins => merge (import/export, file merge)
 - “User” information mixed with “system” information

Target Environments

- Option 2 - Persist each definition in individual file
 - Pros
 - Multiple admins can work concurrently without having to merge (assuming no conflicts)
 - Separate “user” information and “system” information
 - Cons
 - Multiple files to maintain and deploy (common complaint in VATPF)
 - Performance hit (file I/O)



Target Environments

- Persist ALL the target environment definitions in a separate file (tpf_target_envs.xml)
 - Pros
 - “User” info separate from “system” info
 - Cons
 - Multiple files to maintain (but not as many)
 - Multiple admins => merge (file merge, import/export)

Concurrent administration scenario

- Scenario
 - 3 different sites
 - 3 sets of administrators creating target environment definitions
 - Integration testing is required
 - Common deployment to all sites
 - Options
 - Option #1 (single pref file) => import/export
 - Option #2 (individual files) => deploy individual files
 - Option #3 (pref file and system file) => import/export
 - Other scenarios?

Concurrent administration scenario

- Recommended setup:
 - Each admin has a “working” instance of TPF Toolkit where customizations are made and tested
 - Each admin also has a “deployment” instance of TPF Toolkit which represents the final and “cleaned up” customizations (test deployment instance)

Trademarks

IBM is a trademark of International Business Machines Corporation in the United States, other countries, or both.

Java and all Java-based trademarks are trademarks of Sun Microsystems, Inc. in the United States, other countries, or both.

Microsoft, Windows, Windows NT, and the Windows logo are trademarks of Microsoft Corporation in the United States, other countries, or both.

UNIX is a registered trademark of The Open Group in the United States and other countries.

Linux is a trademark of Linus Torvalds in the United States, other countries, or both.

Notes

All customer examples cited or described in this presentation are presented as illustrations of the manner in which some customers have used IBM products and the results they may have achieved. Actual environmental costs and performance characteristics will vary depending on individual customer configurations and conditions.

This publication was produced in the United States. IBM may not offer the products, services or features discussed in this document in other countries, and the information may be subject to change without notice. Consult your local IBM business contact for information on the product or services available in your area.

All statements regarding IBM's future direction and intent are subject to change or withdrawal without notice, and represent goals and objectives only.

Information about non-IBM products is obtained from the manufacturers of those products or their published announcements. IBM has not tested those products and cannot confirm the performance, compatibility, or any other claims related to non-IBM products. Questions on the capabilities of non-IBM products should be addressed to the suppliers of those products.

Prices subject to change without notice. Contact your IBM representative or Business Partner for the most current pricing in your geography.

This presentation and the claims outlined in it were reviewed for compliance with US law. Adaptations of these claims for use in other geographies must be reviewed by the local country counsel for compliance with local laws.