

*TPF Users Group
Grapevine Texas*



IBM Software Group

TPF Continuous Data Collection

A New CDC Design

Operations and Coverage /
Performance and Measurements

Luis R. Vega-Zayas / IBM TPF Development
October 2004

AIM Core and Enterprise Solutions

IBM z/Transaction Processing Facility Enterprise Edition 1.1.0

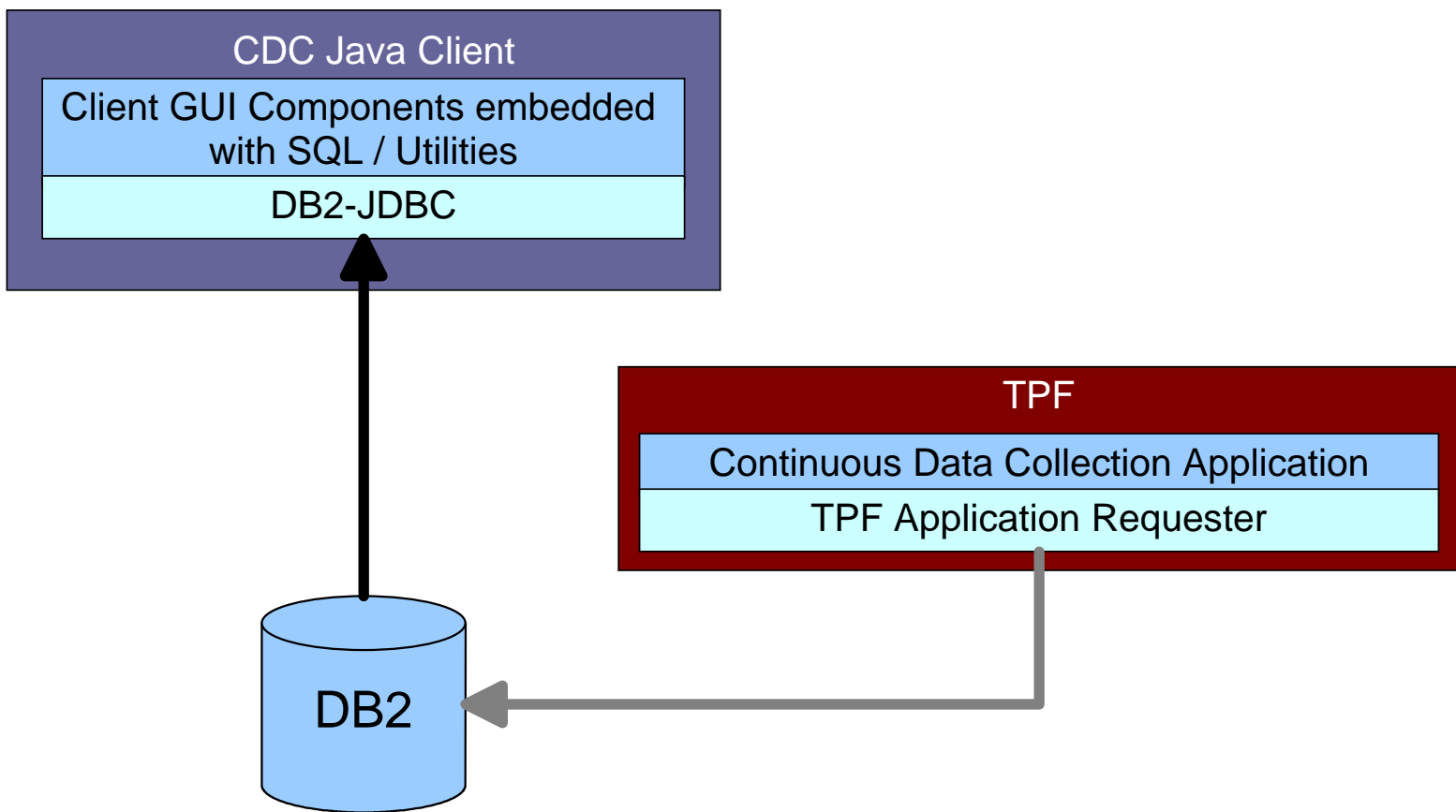
Any references to future plans are for planning purposes only. IBM reserves the right to change those plans at its discretion. Any reliance on such a disclosure is solely at your own risk. IBM makes no commitment to provide additional information in the future.

Copyright IBM Corporation 2004

Agenda:

- What CDC offers today
- Customer Requirements
- New CDC design
- Questions

What CDC looks like today:



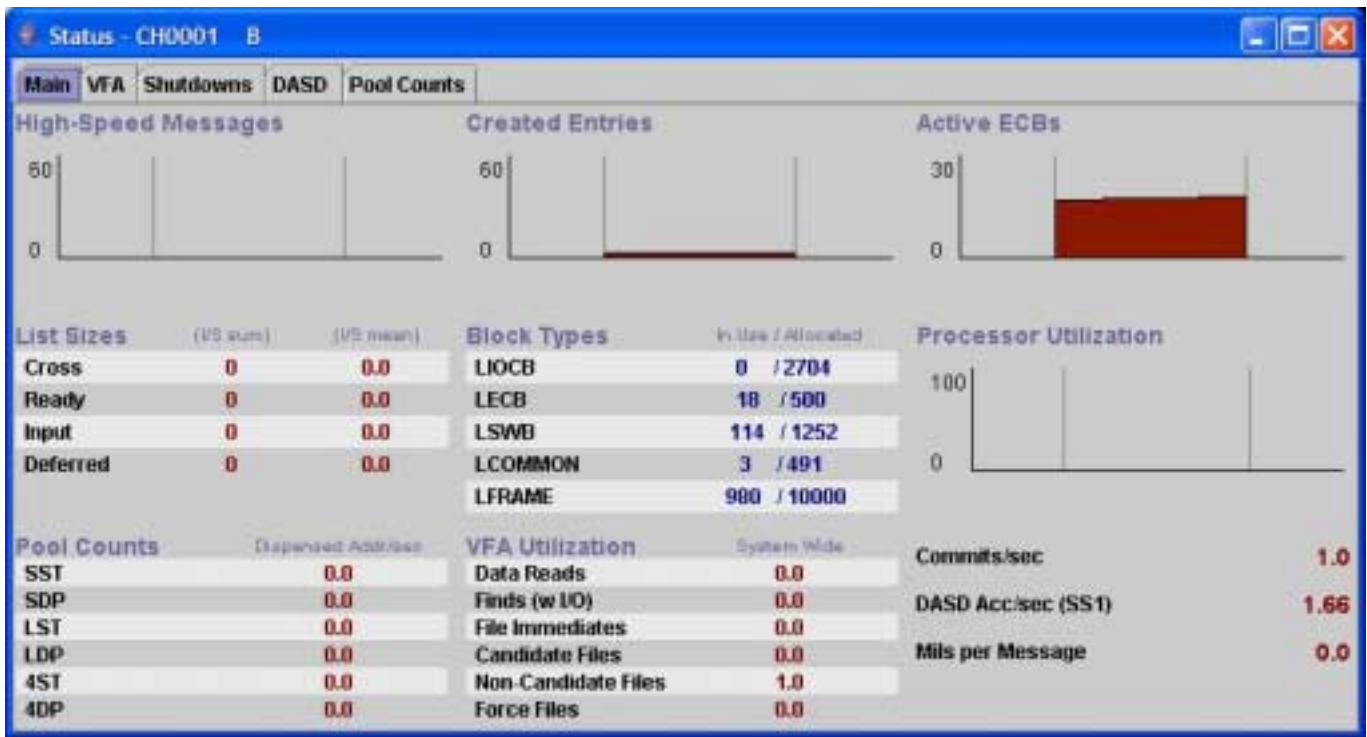
What CDC looks like today (cont.)

- Client Java Graphical User Interface (GUI)
 - Built on Swing and the Abstract Windowing Toolkit
 - Full source provided for user customization
- TPF Application Requester (AR), DB2 ,and Java Database Connectivity (JDBC)
 - Performance data stored on DB2 database through TPFAR
 - GUI embedded with JDBC SELECT statements to retrieve data
 - User exits
 - Collects a subset of information from standard Data Collection/Reduction

What CDC looks like today (cont.)

CH0001 B	MSGS	CPU	MLS	ECBS	IOCB%	ECB%	SWIN	TRM%	CMIN	CRS	RDY	DFR	INP
	9.0	8.3	8.3	37	8.3	3.4	3.02	3.4	0.41	0	0	0	0

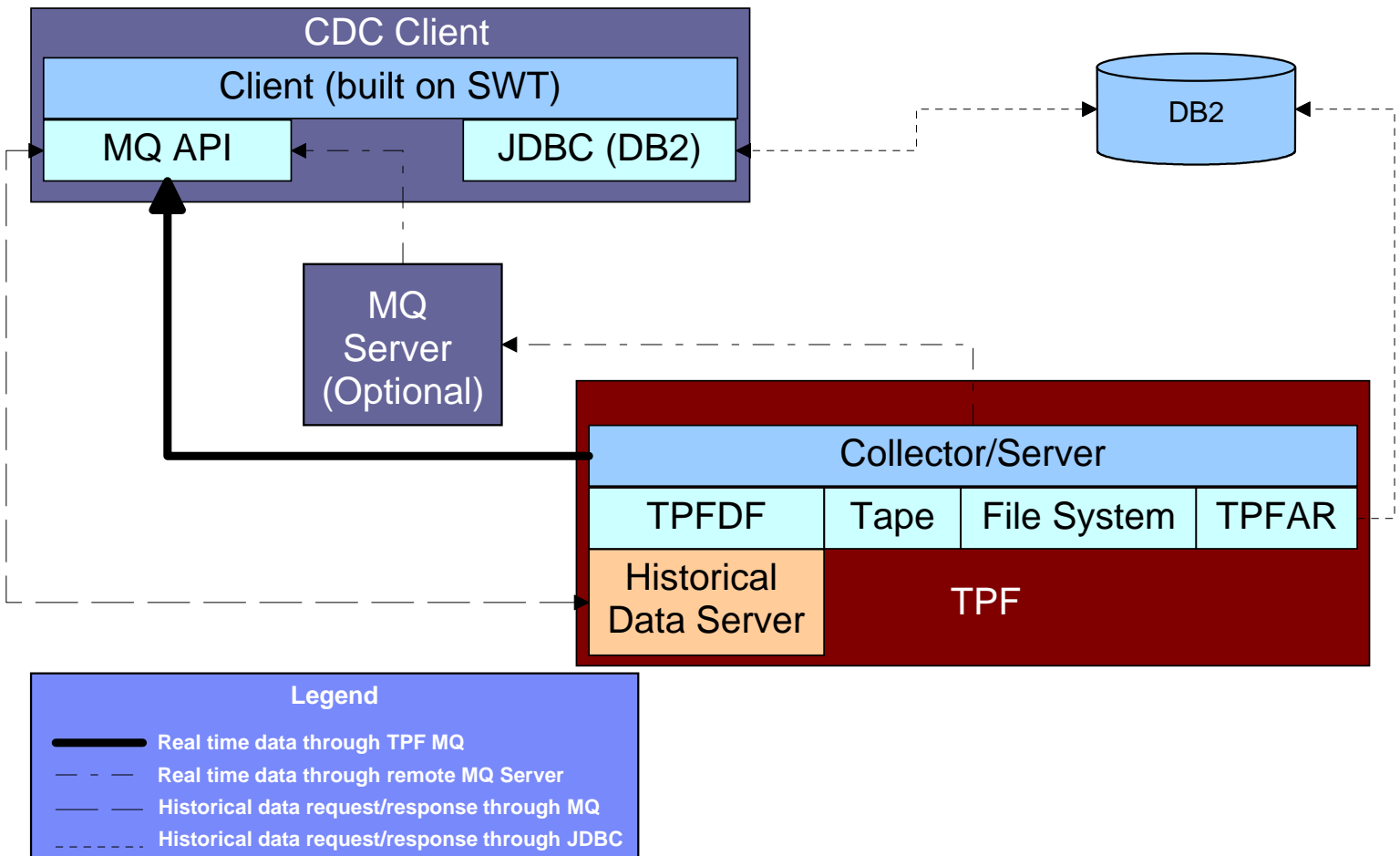
What CDC looks like today (cont.)



On with the new:

- **Requests and suggestions were gathered from the TPF Users Group Performance Task Force**
 - Eliminate CDC's dependency on TPFAR
 - Have a broader number of metrics collected
 - Present rolling averages based on a finer granularity of sampling
 - Provide enhanced support for user-defined counters
 - Ability to store collected information on the host
 - Improved charts and graphs
 - Eliminate conflicts with standard Data Collection on shared counters and data areas

New CDC Design



What has been implemented:

■ **Collector**

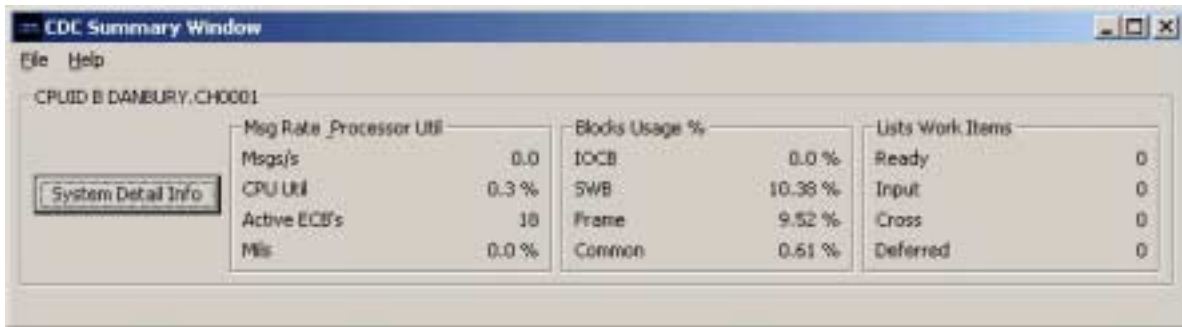
- New metrics have been added
- Data can now be stored to TPFDF, TPF File System, Tape, or a remote DB2 database through TPFAR.
- WebSphere MQSeries is the transport mechanism for the real time data
 - MQ is shipped with TPF
 - An outbound WebSphere MQSeries Server license for the client is not necessary, but strongly encouraged in order to send messages during Input List Shutdown
 - Client MQ API Java classes are available for free download
- Historical request from the client will only be available if the data is stored on TPFDF or DB2

What has been implemented (cont.):

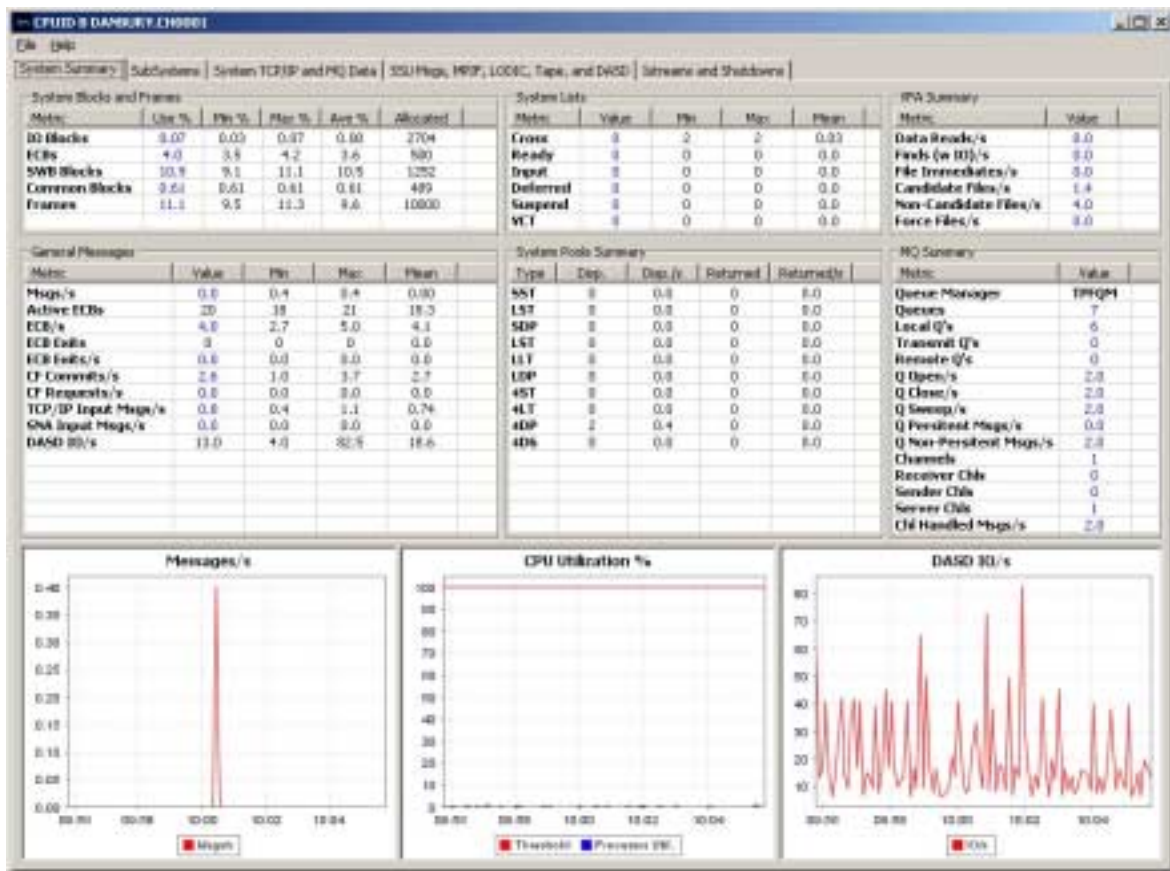
■ Client

- Completely new GUI
 - Built on top of the Eclipse Standard Widget Toolkit (SWT) version 3.0
 - Source code will still be provided for user customization
 - The same charts as the previous version are distributed with the product. New charts sample implementation require a download: <http://www.jfree.org/jfreechart/>
 - New data displays
- Real time data to stream through MQ
- Historical data querying through MQ or JDBC

New CDC look:



New CDC look (cont.):



CDC in phases:

- **This is the first phase in the restructuring of CDC**
 - There is more to be done to provide a complete real time performance data solution
 - First available on TPF 4.1 (PJ29925)
 - Pre-requisite PJ29918
 - Co-requisite (if using TPFDF) PQ95747
 - Forward fit to z/TPF 1.1.0
 - New function to be added
- **Future development to add enhancements**

Legal

WebSphere MQSeries®, DB2®, IBM® are trademarks of the International Business Machines Corporation in the United States, other countries, or both.

Java and all Java-based trademarks are trademarks of Sun Microsystems, Inc. in the United States, other countries, or both.

Other company, product, or service names may be trademarks or service marks of others.