

IBM CICS Explorer

The New Face of CICS
Intuitive, extensible, tooling for CICS



IBM CICS Explorer, the new Face of CICS, integrates CICS tooling with the CICS runtime, providing an easily extensible set of CICS views, data, and methods. Customizable views will let you create task-specific screen layouts that specifically address your individual needs across the development and production processes.

Now generally available as a SupportPac, the CICS Explorer will increase the productivity of highly skilled CICS technical users, as well as providing an intuitive entry-point for broadly skilled staff, by integrating powerful tools into a single Eclipse-based user interface.

For specialists and generalists

As industry demographics change, you will need to transfer CICS skills, knowledge, and best practices to the next generation of technical staff, while maintaining team productivity and protecting service levels. The CICS Explorer will make your specialists more productive and your generalists more immediately proficient, when building and managing CICS systems.

The CICS Explorer helps by giving architects, developers, system programmers, and administrators a common tooling environment, with integrated access to a wide range of data and control capabilities

delivered by CICS Transaction Server, CICS tools, CICS connectors, and IBM and third-party software vendors.

The CICS Explorer will increase the productivity of highly-skilled CICS technical users, and provide an intuitive entry point for broadly-skilled staff – facilitating team building from a wider skills pool and speeding development and deployment of new business applications, while reducing CICS total cost of ownership.

Integrates your CICS tool set

Future releases of CICS Transaction Server, IBM CICS Tools, and IBM Problem Determination Tools for z/OS will integrate and extend the capabilities provided in the CICS Explorer SupportPacs. Regular updates will provide additional capability.

IBM CICS Tools will enrich the CICS Explorer with their own views, tasks and data to support CICS performance analysis, application configuration, application structure and dependency analysis.

CICS Transaction Gateway will add its data and controls to create a view of the greater CICS environment.

IBM Rational Developer for System z V7.5 now includes the CICS Explorer, to simplify the task of developing and deploying CICS applications by providing consistent views of, and control points for CICS resources.

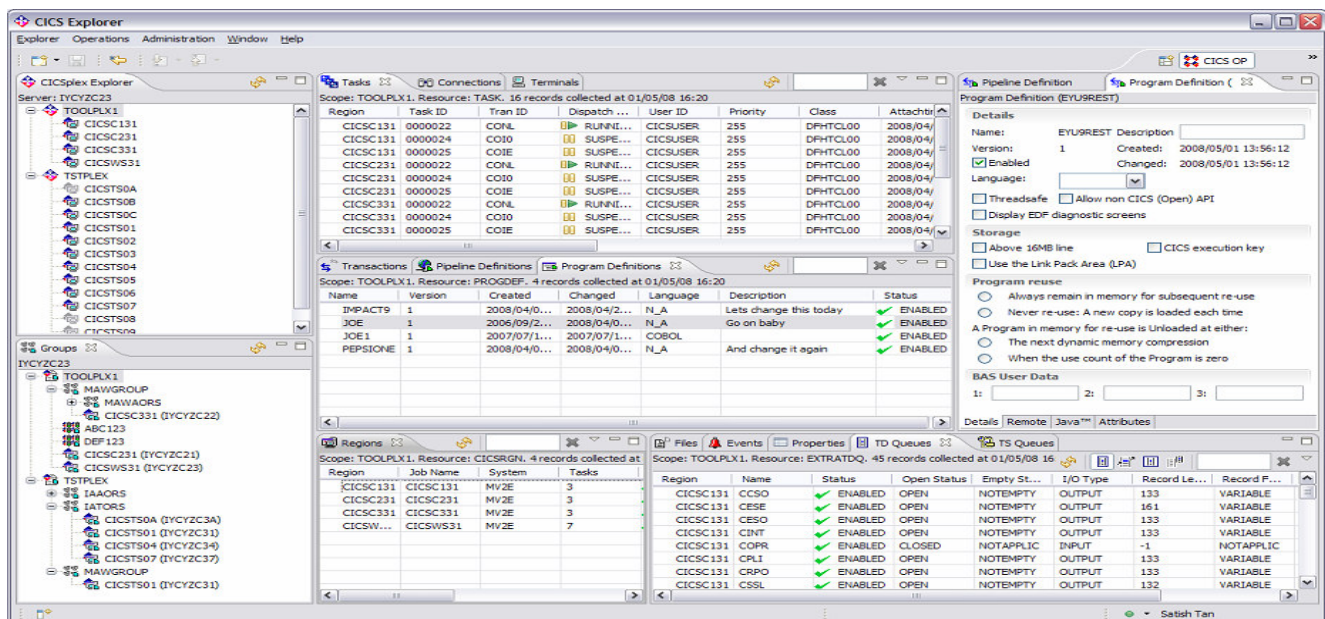


Figure 1 CICS Explorer default region view

Available now!

IBM has now released the first public version of the CICS Explorer as SupportPacs for use with CICS Transaction Server Version 3 and higher. A further SupportPac provides the plug-ins for IBM CICS Interdependency Analyzer for z/OS, IBM CICS Performance Analyzer for z/OS, and IBM CICS Configuration Manager for z/OS.

A Software Development Kit (SDK) the CICS Explorer is available for so you can build your own plug-ins for the CICS Explorer, to integrate and extend your own tools using the rich data, views and methods provided by the CICS Explorer.

SupportPacs

CICS Explorer - Windows (CS1J) and Linux (CS1O): <http://tinyurl.com/65c5r6>

CICS tools plugins for CICS Explorer (CS1N): <http://tinyurl.com/67u23d>

CICS Explorer SDK (CS1R):
<http://tinyurl.com/65c5r6>

More functionality is planned for subsequent SupportPac and product releases in 2009.

Gary Barnett (The Bathwick Group) said: **"If you are not using it, or you're not trying it, well, you should!"** This is your chance, so, why wait?

Positioning

The CICS Explorer will complement and extend CICSplex SM by providing an integration point between the CICS run-time, configuration, and other CICS-related information and tooling.

CICSplex Systems Manager (SM), originally shipped with CICS Transaction Server version 1, retains its role providing a single system image and point of control for CICS management, operations and administration.

IBM System z tools

IBM System z™ tools including Problem Determination Tools, CICS Tools and Application Development Tools support the entire enterprise-application life cycle to help you build, integrate, test and manage enterprise solutions for CICS, so you can make the most of your System z platform investments and expedite your move to SOA.

More information

CICS Explorer home page

ibm.com/cics/explorer

CICS Explorer forum

<http://tinyurl.com/68bndw>

Webcast: IBM CICS Explorer, the new face of CICS (11/5/2008). Replay available

ibm.com/software/systemz/webcast/5nov

SupportPac CA8K: CICS Atom feed support

<http://tinyurl.com/6pfghe>

IBM Rational Developer for System z V7.5

<http://tinyurl.com/6pqek2>

To learn more about CICS and IBM's tooling solutions, contact your IBM representative or IBM Business Partner, or visit the following Web sites:

CICS Transaction Server: ibm.com/cics

CICS Tools: ibm.com/cics/tools

PD Tools: ibm.com/software/pdtools

Rational Tools: ibm.com/software/rational

Hardware requirements

CICS Explorer runs on any hardware configuration supported by the licensed programs specified below.

Software requirements

CICS Explorer runs under the control of, or in conjunction with, the following programs and their subsequent releases, or their equivalents.

- Eclipse RCP V3.4 (included) for Windows and Linux (specific releases to be announced)

Required licensed programs

- IBM z/OS, Version 1.7 or later
- CICS Transaction Server for z/OS V3.1 or V3.2 (5655-M15). CICSplex SM WUI server required for CICS resource views.
- A supported version of CICS Interdependency Analyzer for z/OS, or CICS Performance Analyzer for z/OS, or CICS Configuration Manager for z/OS when using the matching plug-in.

Last updated Thursday, October 30, 2008