



 **IBM SOA ARCHITECT SUMMIT**
LE 22 MAI 2008

The logo for the IBM SOA Architect Summit is located on the left side of the slide. It features a blue circular icon with a white arrow pointing to the right. To the right of the icon, the text 'IBM SOA ARCHITECT SUMMIT' is written in a bold, blue, sans-serif font. Below this, the date 'LE 22 MAI 2008' is written in the same font and color.

**Multiples usages of a service
registry**



SOA Governance is a key requirement for overall successful SOA implementations



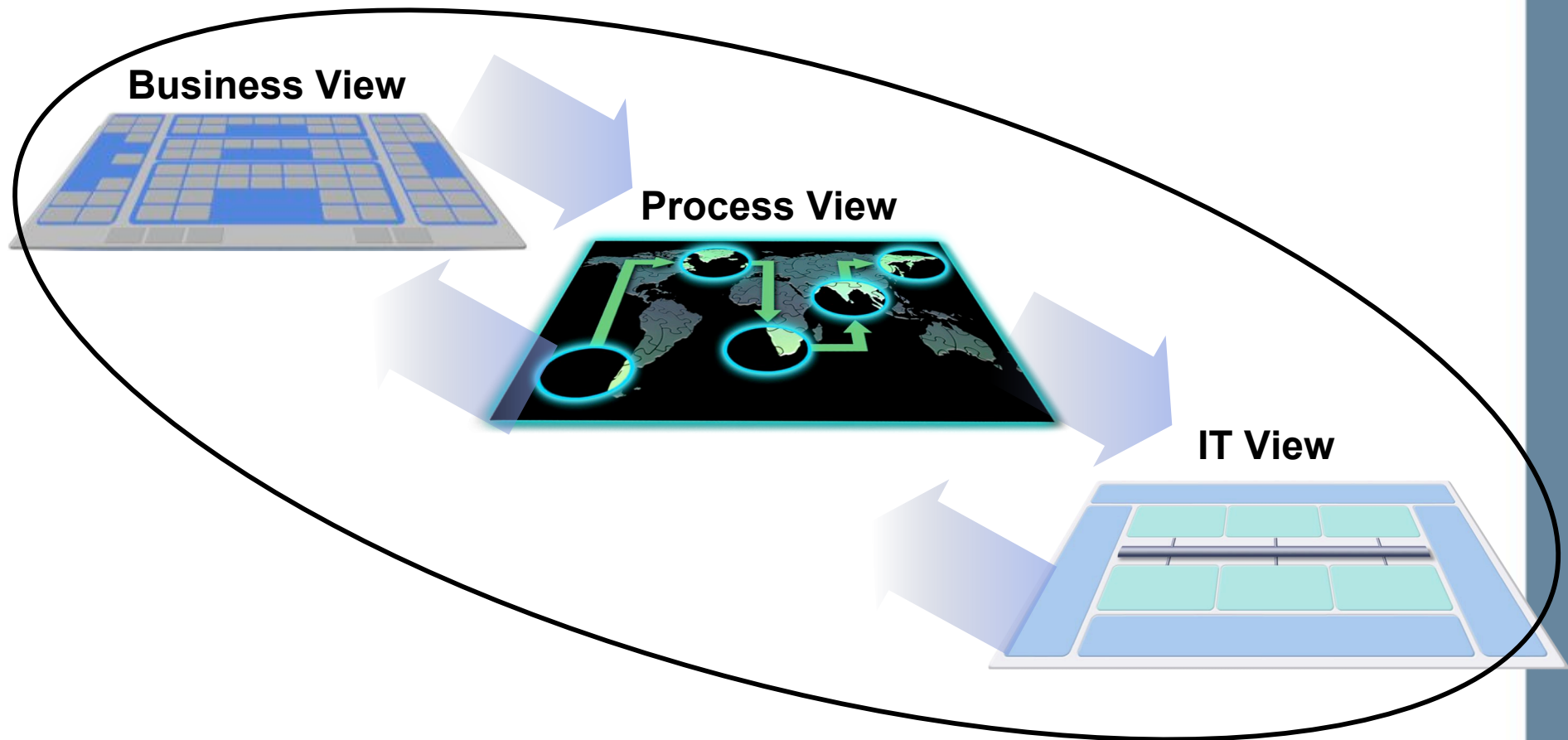
You only need one service to need governance. You only need one service to destroy your business.

Gartner



SOA Governance and Service Lifecycle Management aligns IT and business goals for Globally Integrated Enterprises

A holistic approach spanning business, process, and IT



- #1 CIO priority: Aligning IT and business goals

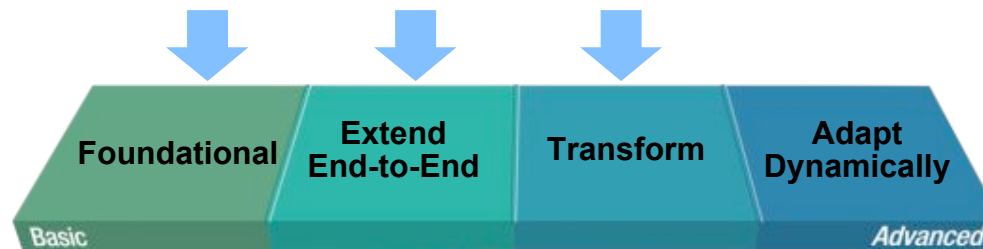
Source: CIO Magazine; January 2007

SOA Governance is critical...

no matter...

whether you are...

...here or here or here



Smart SOA

Critical for maximizing SOA success and value on the path toward becoming a Globally Integrated Enterprise

Questions customers are asking about governing SOA

How do I eliminate “rogue services” and ensure control of my SOA?

How do I govern services as part of my SOA?

How do I manage the services lifecycle?

How do I increase service reuse?

How do I enable enforcement of policies across all internal and external services?

How can I help my ESB execute in the right context?

How do I help services interact efficiently and dynamically with each other?

How do I optimize service interactions to be better aligned with business process?



What is a registry ... a repository?

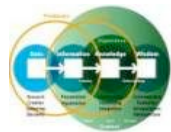


Registry?
Contains Service
Metadata



Repository?
Stores Service Artifacts

*An integrated Registry / Repository Solution
is needed govern and manage SOA for maximum value*



**Business
process vitality**



**New value
through reuse
of assets**



**Improved
connectivity**



**Closer
alignment of IT
to business**



**Business
Flexibility**

IBM WebSphere Service Registry and Repository

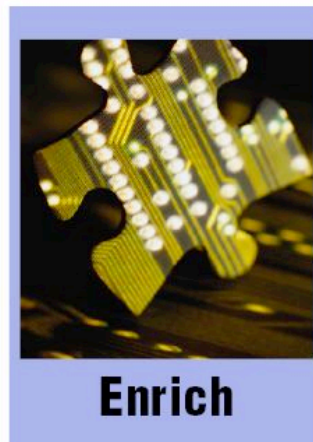
Maximize Business Value of your SOA



Publish



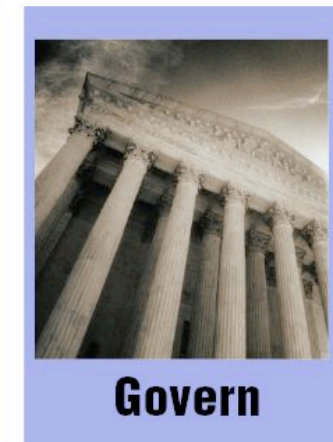
Find



Enrich



Manage



Govern



▪ Promote Reuse

- Eliminate Redundancy
- Business and IT Alignment
- Change Management



▪ Enhance Connectivity

- (Externally) Expose Services
- IT Flexibility
- Version Management
- Policy Management

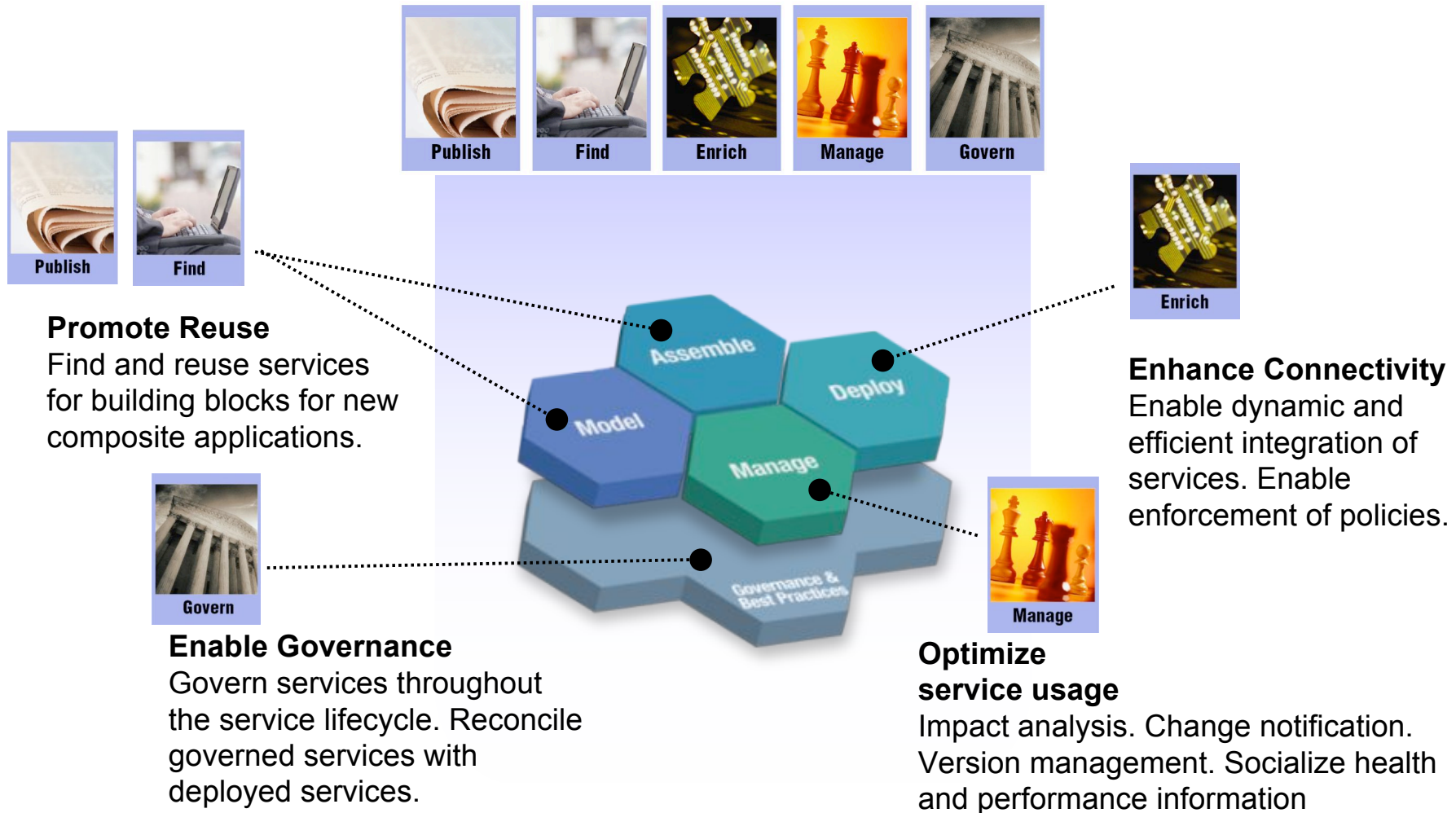


▪ Enable Governance

- Service Reconciliation
- Service Lifecycle Management

The WebSphere Service Registry and Repository provides value throughout the SOA lifecycle

WebSphere Service Registry and Repository



User Roles in WSRR



IT Leaders
(CIOs)

Provide: Expertise on Governance strategy and function

Receive: Flexible IT, new value through reuse of services and satisfied customers



BPM Experts
(Business Architects & Analysts)

Provide: Domain and process expertise in the form of business classifications and service dependencies.

Receive: Visibility into existing services and processes.



IT Experts
(IT Architects, Developers)

Provide: Service details/content and technical expertise in implementing Governance solutions .

Receive: Business and IT alignment and visibility into existing services and associated policies.



Service Users
(Customers, Employees & Partners)

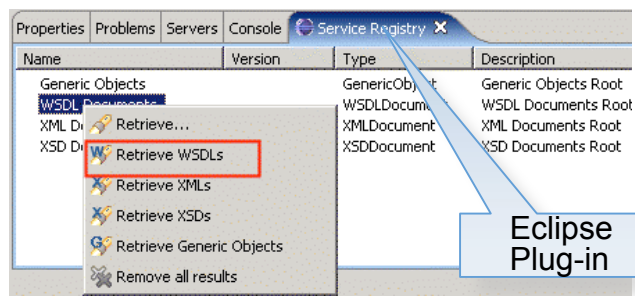
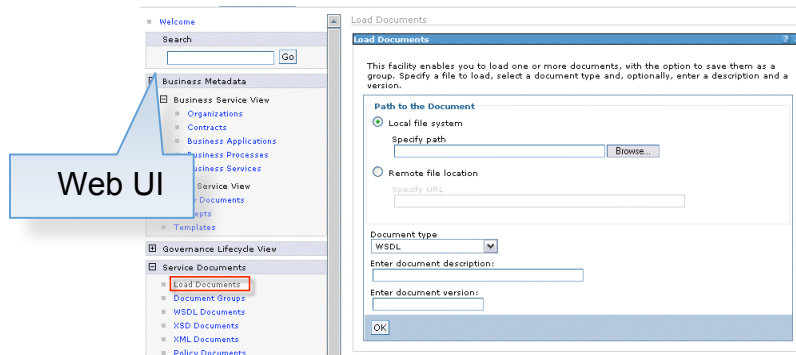
Provide: ---

Receive: Up-to-date service information.

Goal: Eliminate Redundancy

You want to ...

- Make sure that people are aware of all existing and planned services so that they don't create redundant services



IBM Solution

- WSRR makes it easy to publish and discover Services
 - Multiple methods to publish and associate metadata
 - Discovery and validation of dependencies
 - Standards based customizable ontologies to classify services aligned with business domain for easy service discovery
 - Powerful query mechanism to search for best-fit services
 - *Service Discovery* to discover deployed services on .NET and WAS servers
 - Support for CICS and MQ based services
 - Integration points for easy publish and discovery from other products in the environment

IBM WebSphere Service Registry and Repository Makes It Easy..... To Publish using Web UI

Load Documents ?

This facility enables you to load one or more documents, with the option to save them as a group. Specify a file to load, select a document type and, optionally, enter a description and a version.

Path to the document

Local file
Specify path to file:
C:\LabF

Remote file
Specify URL:

Document type
ZIP/JAR file

Enter document description:

Enter document version:

Enter document version:

Load Documents ?

Documents to be Loaded

When all required documents are listed below select either 'Finish' to complete the load or 'Save as a group' if you want to refer to these documents as a document group.

PrimaryCreditReportService.wsdl (ready to load) | [Remove](#) | [Replace](#) |

↳ **CreditReportServiceElectronicInterface.wsdl** (ready to load) | [Remove](#) | [Replace](#) |

↳ **Businessitems.xsd** (ready to load) | [Remove](#) | [Replace](#) |

SecondaryCreditReportService.wsdl (ready to load) | [Remove](#) | [Replace](#) |

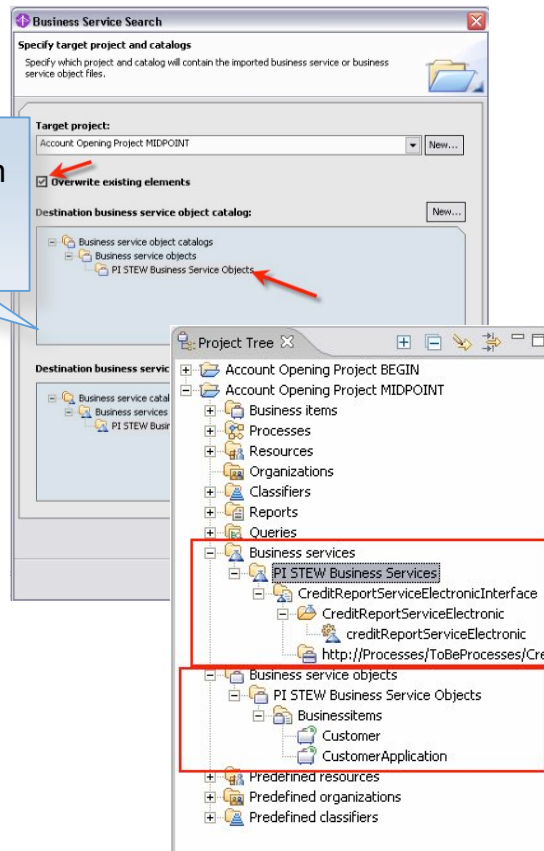
↳ **CreditReportServiceElectronicInterface.wsdl** (already in list)

Goal: Business and IT Alignment

You want to ...

- Ensure Business and IT alignment and promote reuse at the business level

Classification based search in WebSphere Business Modeler



IBM Solution

- WSRR makes it easy for the business analysts to publish and discover Services
 - Support for standards based classification systems
 - User-friendly Web UI to define and use classification systems
 - Integration with WebSphere Business Modeler

IBM WebSphere Service Registry and Repository Makes It Easy..... To Define and Use Classification Systems

Define
Classifications

Use
Classifications

Classification system ?

Classification Systems > Governance Profile Taxonomy
Details of the Governance Profile Taxonomy Classification system.

Classification system | Classes

Select a class to Add a child, change its parent, Delete or Edit it. Add a Root Class using the 'Add Root Class' Button.

Preferences

Edit Add Root Class Add Child Change Parent Delete

Select	Name
<input type="checkbox"/>	Business Domain
<input type="checkbox"/>	Finance
<input type="checkbox"/>	Insurance
<input type="checkbox"/>	Insurance Account Management
<input type="checkbox"/>	Insurance Claims Processing
<input type="checkbox"/>	Sales and Marketing
<input type="checkbox"/>	Environment

Edit Add Root Class Add Child Change Parent Delete

Save and Commit Cancel

Classifications ?

Business Services > Insurance Policy Validation Service > Classification Systems

Navigate the tree on the left to select classifications to be added to the concept: Insurance Policy Validation Service. Click the Add button to add the selected classifications to the list.

Preferences

Classification tree

Select Classifications

- WSRR Core Ontology
- Default Lifecycle
- GovernanceProfileLifecycle
- Governance Profile Taxonomy
- Business Domain
- Finance
- Insurance
- Insurance Account Management
- Insurance Claims Processing
- Sales and Marketing
- Environment

Add >>> Remove

Classification list

Service Manage

Details for the selected classification. To see the details for an item, select the classification from the list.

System	Name	URI
None		

Apply OK Reset Cancel

Goal: Change Management

You want to ...

- Manage and communicate changes to services and services related entities so that impact can be identified in time and the consumers can be notified in advance.

IBM Solution

- WSRR makes it easy to manage and communicate changes to the service metadata
 - **Discovery and validation of dependencies**
 - **User-defined relationships**
 - **Graphical view**
 - **Impact analysis**
 - **Subscription and Notification**

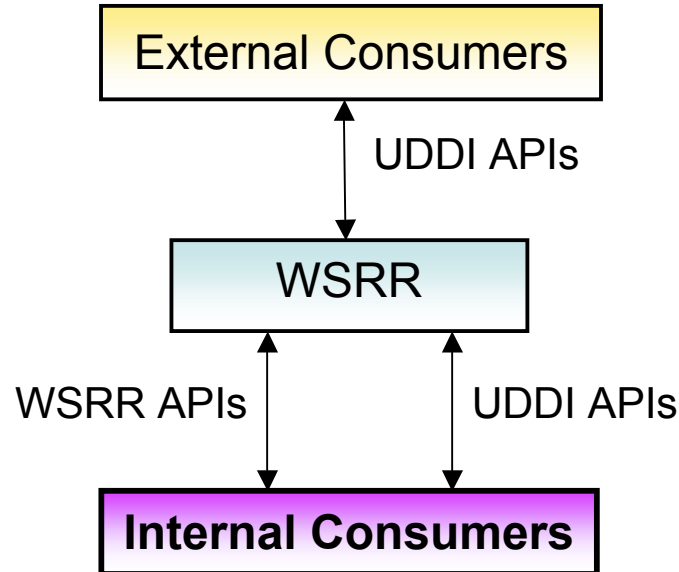
The screenshot shows the 'Impact Analysis' interface for 'Businessitems.xsd'. It features a 'Specify dependency relationships' section with a graph showing dependencies between 'PremiumCreditReportService', 'BasicCreditReportService', and 'CreditReportService'. The 'Businessitems.xsd' is highlighted as the target. The interface includes 'Impact Analysis Options' (e.g., 'Include entities that depend on this entity'), 'Built-in relationships' (e.g., 'Derived entity reference'), and 'Display Options' (radio buttons for 'Display results as a graph' and 'Display results as a table'). A 'Go' button is at the bottom.

Graphical visualization of impact

Goal: Expose Services

You want to ...

- Enable customers/partners to discover your services using standards (e.g. UDDI) and make sure that the service information is up-to-date



IBM Solution

- WSRR make it easy to publish services
 - **Multiple methods to publish services and associate meta-data**
 - **Discovery and validation of dependencies**
 - **Standards based customizable ontologies to classify services aligned with business domain for easy service discovery**
 - ***Service Discovery* to discover deployed services on .NET and WAS servers**
- WSRR enables the service consumers to discover services using standards
 - **Support for UDDI APIs**

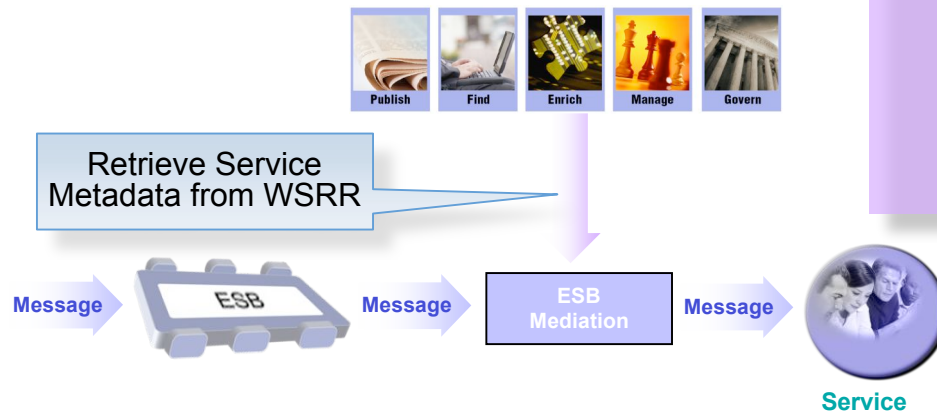
Goal: IT Flexibility

You want to ...

- Enhance IT flexibility so that you can avoid missed business opportunities and higher costs due to re-development, re-testing and re-deployment of mediation flows every time the runtime policy changes

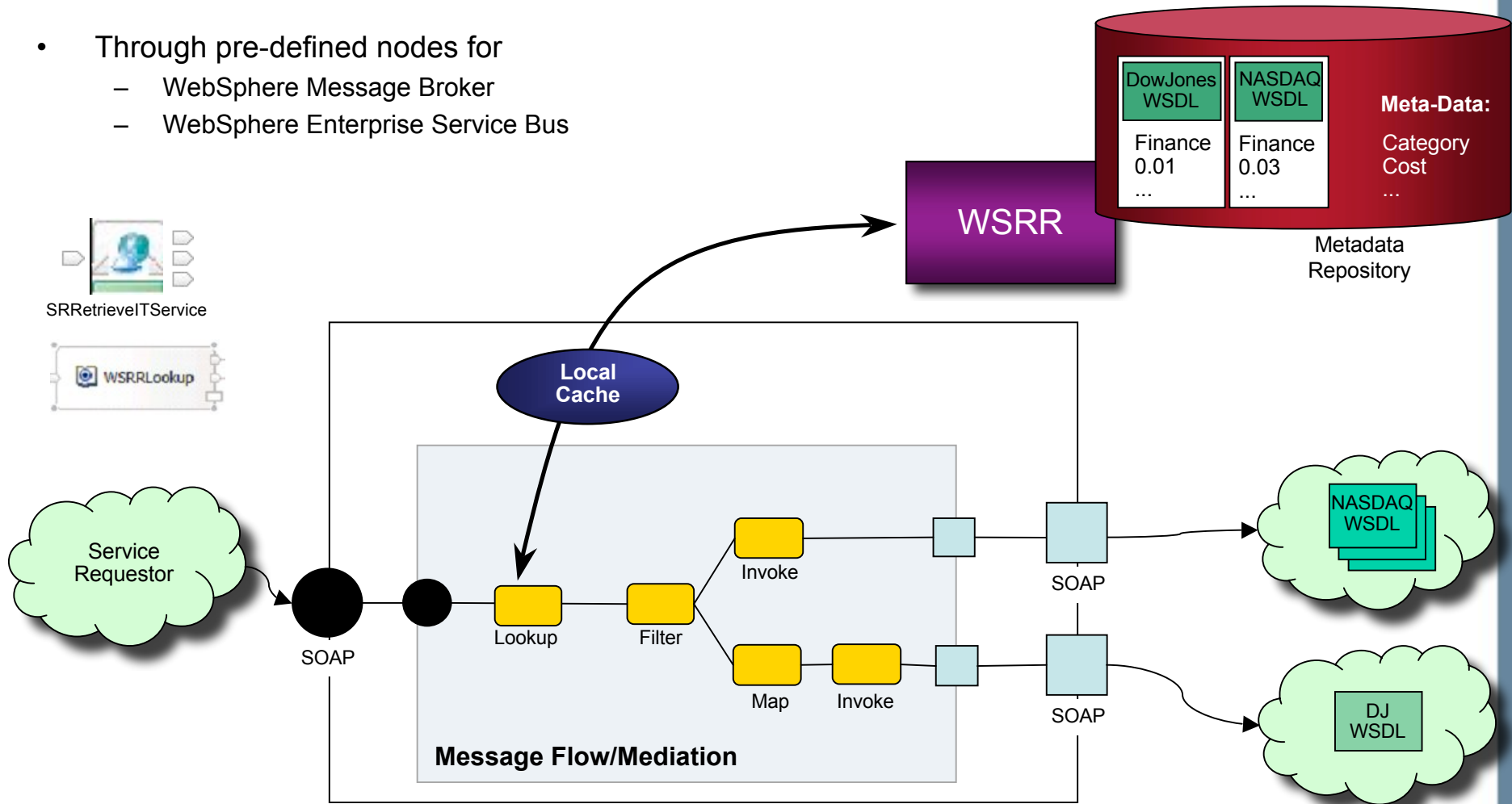
IBM Solution

- WSRR makes it easy for the runtime products to get the service metadata
 - **Pre-built integration points allow applications to query WSRR for service end-points as well as the associated metadata, during runtime**
 - **Standards based API support to access service content**
 - Java APIs
 - SOAP APIs
 - UDDI V3 APIs
 - REST interfaces



IBM WebSphere Service Registry and Repository Makes It Easy..... To Enhance Connectivity

- Through pre-defined nodes for
 - WebSphere Message Broker
 - WebSphere Enterprise Service Bus



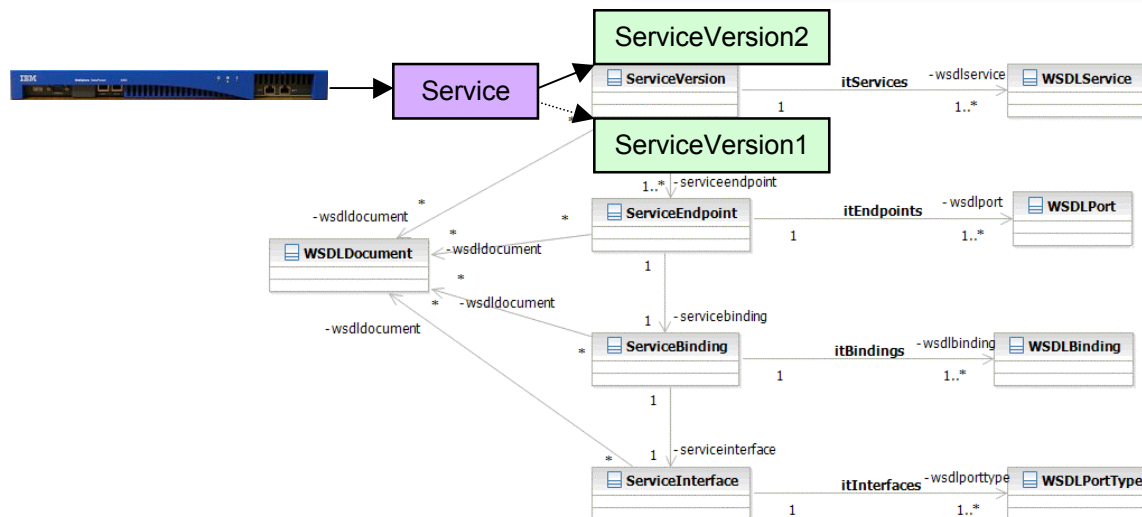
Goal: Version Management

You want to ...

- Move the customers to the latest version of the service as seamlessly as possible but can't because of static binding between the service consumer and the service provider

IBM Solution

- WSRR makes it easy to do Service Versioning
 - **Well-defined metadata model that supports versioning**
 - **Integration with DataPower**
 - **Support for dynamic relationships**



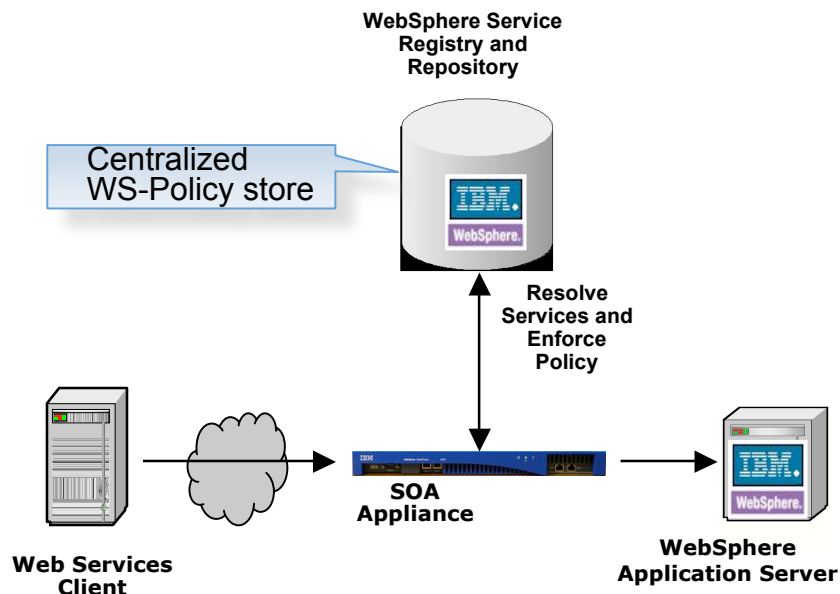
Goal: Policy Management

You want to ...

- Be able to reuse, change and govern the IT policies so that you can increase the visibility of existing policies and their impact, avoid conflicts, control policies and have flexible IT.

IBM Solution

- WSRR makes it easy to do policy management
 - Policies are treated as first-class citizen
 - Support for standards WS-Policy and WS-PolicyAttachment
 - Standards based API support to access service content
 - Java APIs
 - SOAP APIs
 - UDDI V3 APIs
 - REST interfaces
 - Integration with DataPower



IBM WebSphere Service Registry and Repository Makes It Easy..... To Create and Manage policies

The screenshot shows the 'Edit WS-ReliableMessaging Policy' interface. The main window title is 'Edit WS-ReliableMessaging Policy'. Below the title, it says 'Manage Policies > New WS-RM Policy' and 'Details of the WS-RM Policy.' The form is divided into three sections: 'Policy Properties - WS-RM Policy Domain', 'Document Properties', and 'Assertion Properties'. The 'Policy Properties' section includes fields for 'Policy Name', 'Description', and 'Wsu:ID'. The 'Document Properties' section includes fields for 'Policy Document Name', 'Namespace', and 'Version'. The 'Assertion Properties' section includes fields for 'InactivityTimeout', 'BaseRetransmissionInterval', and 'AcknowledgementInterval', each followed by a 'Milliseconds' label. There is also a checkbox for 'ExponentialBackoff'. At the bottom of the form are three buttons: 'Publish', 'Reset', and 'Cancel'. On the left side, there is a navigation pane with a tree view showing 'Policy Author' and 'Manage Poli'. On the right side, there is a help pane with a search bar and a 'Go' button, and a small text box containing help information.

Edit WS-ReliableMessaging Policy ?

Manage Policies > New WS-RM Policy

Details of the WS-RM Policy.

Policy Properties - WS-RM Policy Domain

Policy Name
Description
Wsu:ID

Document Properties

Policy Document Name
Namespace
Version

Assertion Properties

InactivityTimeout
BaseRetransmissionInterval
AcknowledgementInterval

ExponentialBackoff

Publish Reset Cancel

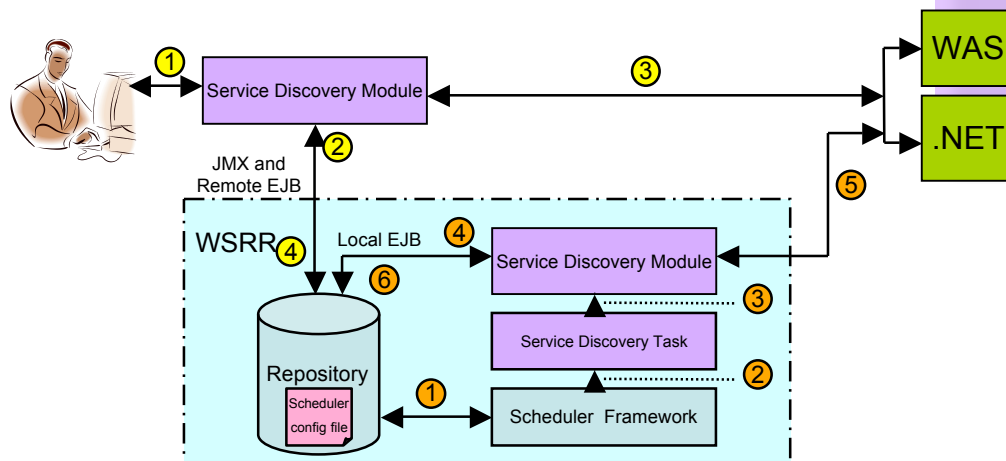
Goal: Service Reconciliation

You want to ...

- Discover rouge services, i.e. services that have not been deployed in a controlled manner and therefore can pose business risk, and make sure that the registered services are in-sync with the deployed services.

IBM Solution

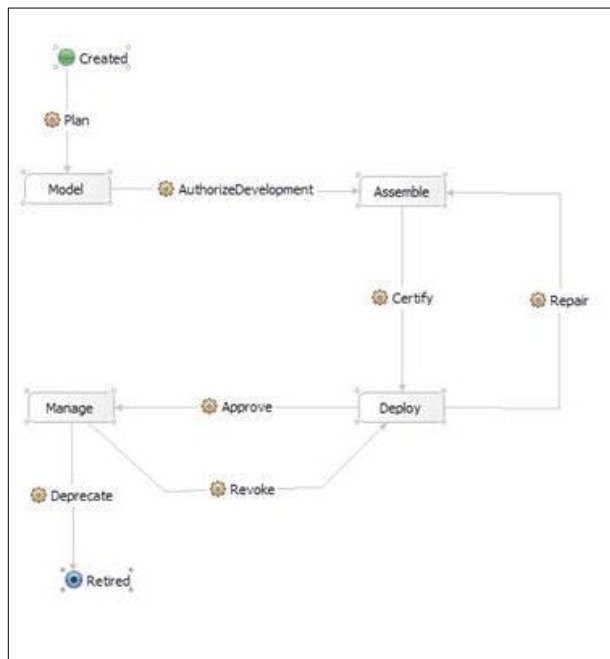
- WSRR make it easy to discover and reconcile deployed services
 - Service Discovery** to discover deployed services on .NET and WAS servers
- WSRR can easily integrate with service monitoring products
 - Integration with ITCAM for SOA**



Goal: Service Lifecycle Management

You want to ...

- Reduce business risk and increase reuse by improving the quality/consistency of the service metadata.

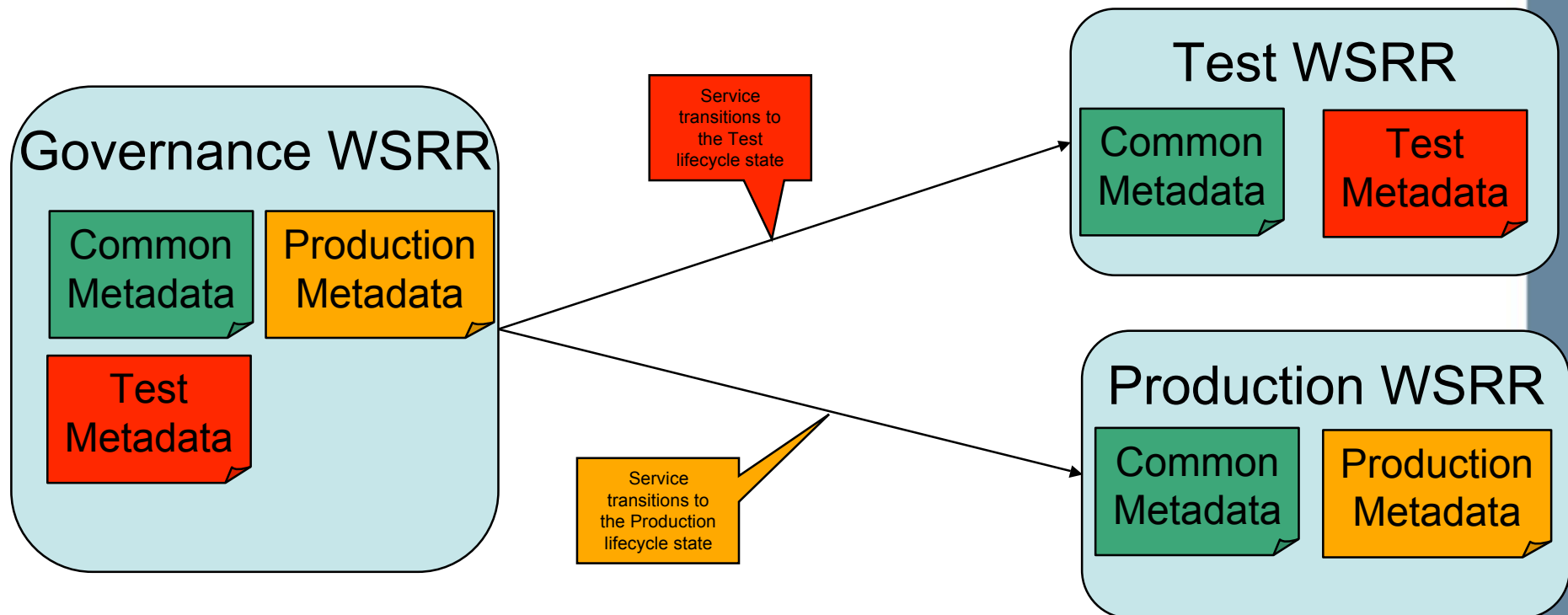


IBM Solution

- WSRR make it easy to control service metadata
 - **OWL based Metadata Modeling**
 - **End-to-end service life cycle management**
 - **Controlled lifecycle state transitions**
 - Customizable validators
 - Subscriber notifications
 - **Support for service promotion from one environment to another (e.g. staging to production)**
 - **Role based access to services for sharing and reuse**
 - Easy to use access-control editor
 - **Governance profile that includes templates, lifecycles, generic validator, classifications and roles to help you get started quickly**

IBM WebSphere Service Registry and Repository Makes It Easy..... to manager multiple environment

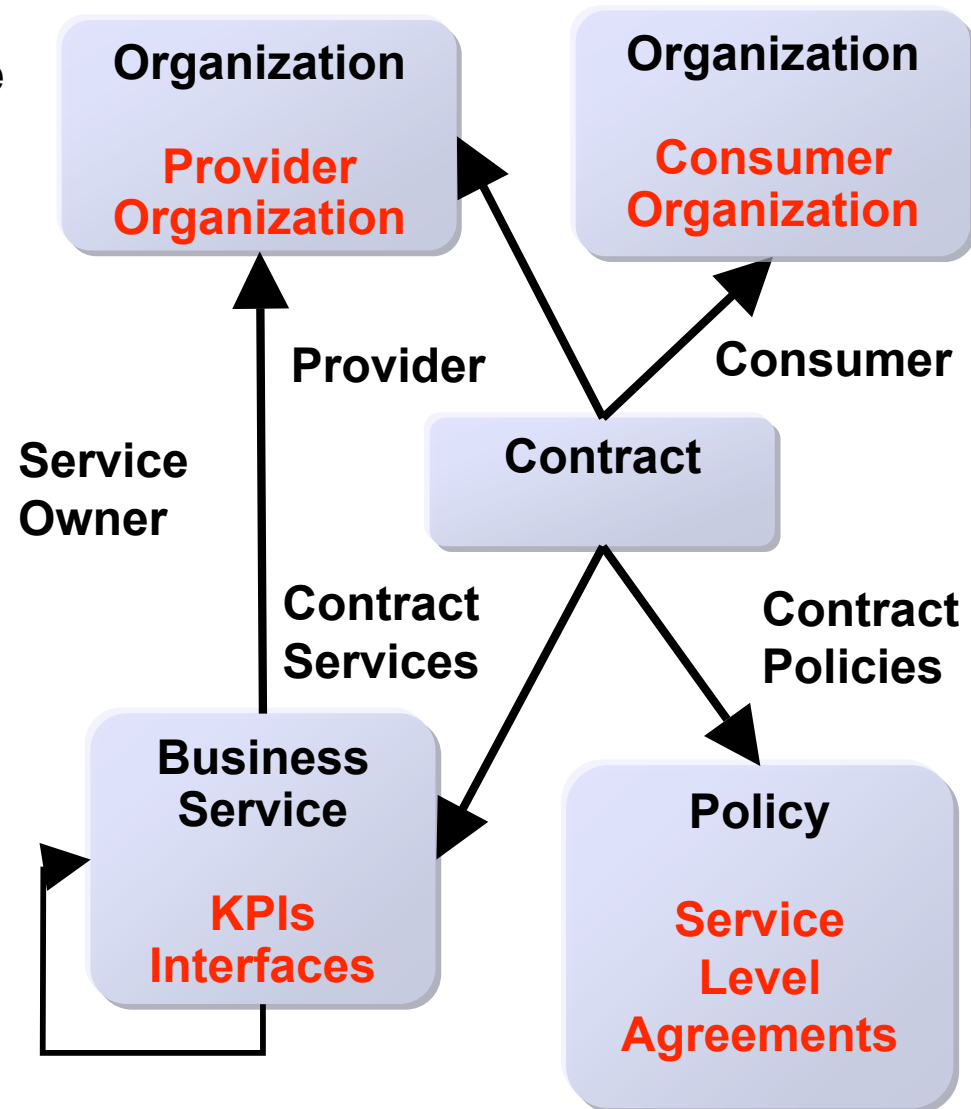
- Helps clients extend the governance to multiple environment topology
- Promotion allows metadata relating to multiple deployment environments to be managed in a central WSRR instance while allowing the appropriate subset of the information to be copied to an environment-specific WSRR instance in response to lifecycle transitions



IBM WebSphere Service Registry and Repository Makes It Easy..... To get started quickly

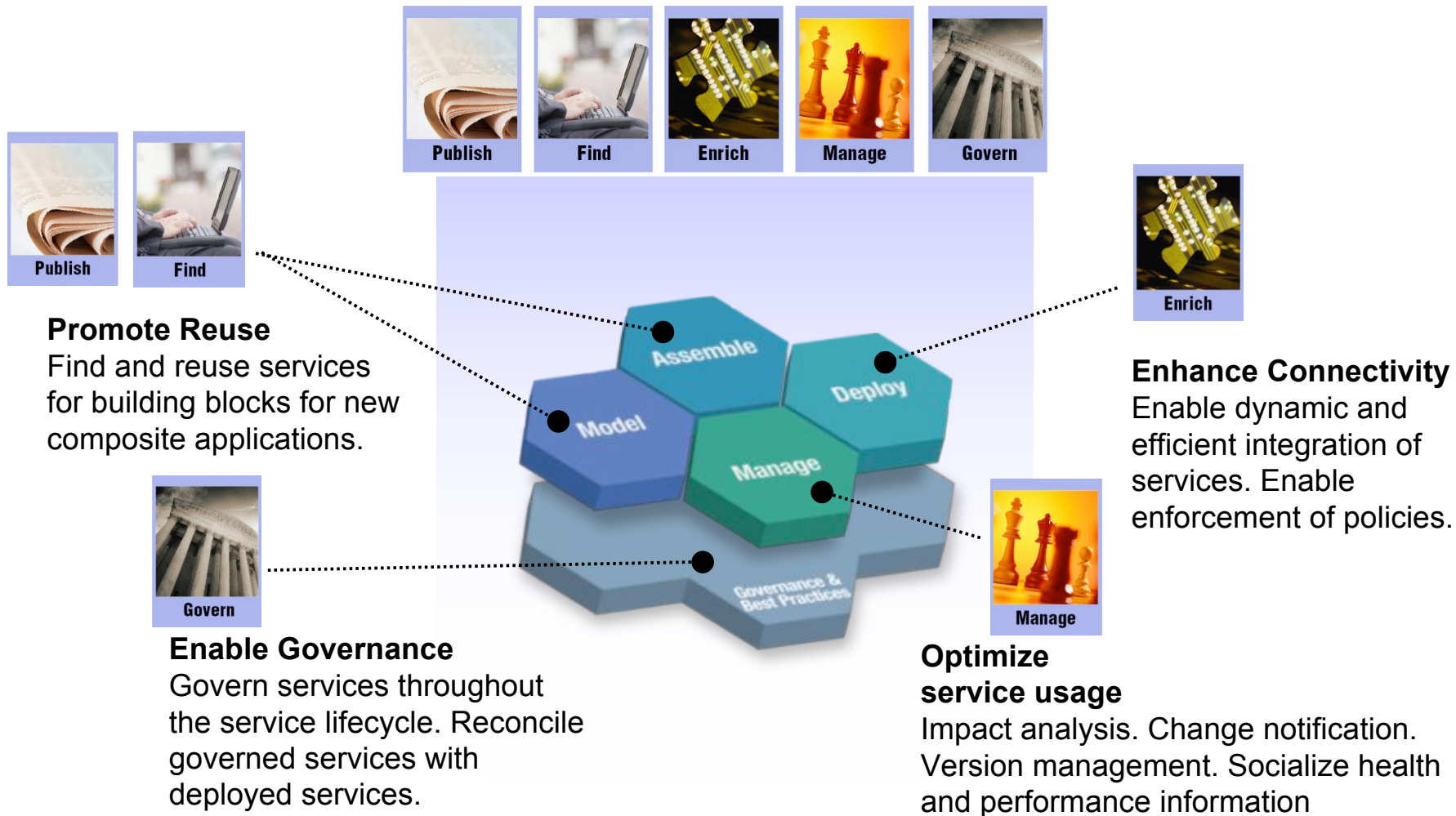
- **Out-of-the-box Governance Profile to get you started quickly**

- Templates
- Associated lifecycles
- Governance policies
- (generic) Validator for governance policies
- Classification systems
- Roles and perspectives
- Access Control



The WebSphere Service Registry and Repository provides value throughout the SOA lifecycle

WebSphere Service Registry and Repository





धन्यवाद

Hindi

多謝

Traditional Chinese

ขอบคุณ

Thai

Спасибо

Russian

Gracias

Spanish

Merci

French

شكراً

Arabic

Thank You

English

Obrigado

Brazilian Portuguese

Grazie

Italian

多谢

Simplified Chinese

Danke

German

நன்றி

Tamil

ありがとうございました

Japanese

감사합니다

Korean