

IBM SOA*
Summit



Selling SOA to Your CEO

Dan Power

VP Worldwide SOA Sales

IBM Software Group



CEO's Cite Innovation as Top Priority for Business

Business Model Innovation delivers the greatest returns

IBM

Results of 765 CEO interviews worldwide:

Out Performers place 2X emphasis on Business Model innovation than under performers

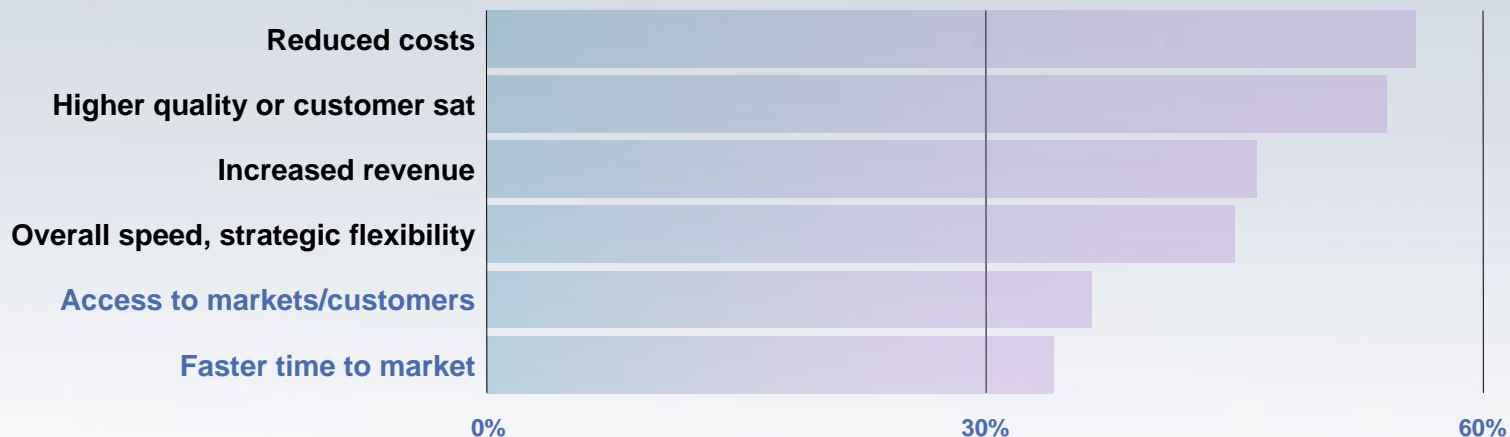
- CEOs are under intense pressure to innovate
- Corporate culture is critical to sustained innovation
- Business model innovation is the new strategic differentiator



Source: IBM 2006 Global CEO Study

CEO Sees Benefits with Alignment of Business and IT

CEO Sees Benefits:



“Helps integration and collaboration with external parties”

“Good way to reduce costs”

“Results in increased productivity”

“Enables daring ideas”

“Technology... its about excellence and keeping pace”

Source: 2006 IBM Global CEO Survey

SOA Improves Business Agility

By Providing a More Flexible Infrastructure



With SOA, IT is flexible and responsive to business needs



Without SOA, IT can't keep up with fast changing requirements of customers, partners, and competition



Business Flexibility

5

Which approach enables innovation?



SOA Aligns Businesses for Growth

By Tightly Aligning IT to Business Processes



Better
Business
Processes

4

With SOA, process logic
decoupled from infrastructure



Without SOA, processes are rigid
and inflexible



***Which approach best enables optimized
business processes?***

SOA Helps Businesses Lower Costs By Making Integration Easier



With SOA, integration is done “loosely” with modular pieces



Without SOA, integration is done with “hardwiring”



Easier
Integration

3

Which method do you think is easier, faster?



SOA Helps Businesses Lower Costs By Encouraging Reuse of Assets



Reuse
of Assets

2

With SOA, new services are built flexibly by reusing assets



Without SOA, applications have to be “ripped and replaced”



Which makes better use of your existing assets; saves you money?

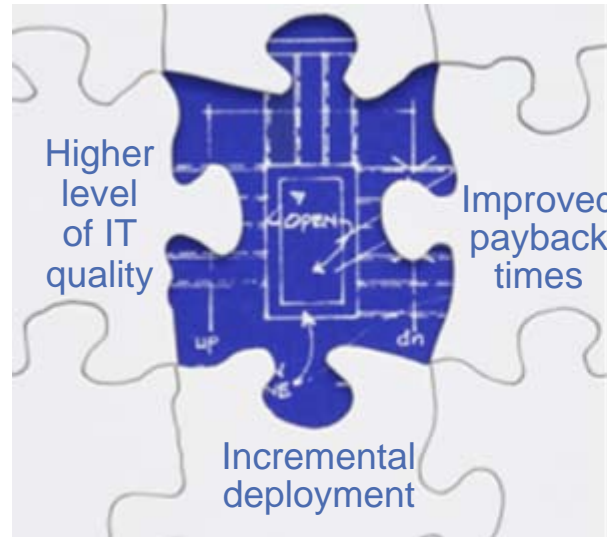


SOA Reduces Business Risk

By Providing Quality, Simplicity, and Governance



With SOA, better oversight,
control and reuse



Without SOA, ad hoc, siloed
and uncontrolled projects



How do you ensure success?

Reduced
Risk

1

Things to Remember When Talking SOA to Your CEO



Don't Call It SOA



Pick Projects with Tangible Benefits



Build a Value Focused Business Case



Reference Third Party Validation





Explain the value and benefits in business terms that reflect the organization's goals – such as cost reduction, productivity, competitive advantage, etc. – before diving into a technical conversation





Traditional Approach

- 1200 hours of development
- Several components
- Multiple technologies
- Custom built
- TCO increases over time
- Reuse is harder
- Hinders future COTs

SOA Approach

- 30 hours of development
- 1 component
- Minimal custom work
- TCO reduced by more than half
- No impact on future COTs
- Reuse is simple

40X improvement

ROI and Time to Value

Pick Projects with Tangible Benefits



When selecting those small test projects, choose to integrate and automate those business processes that can have the most widespread, positive impact across the organization



Online SOA Business Value Analyzer

Leverage Tools to Help you Identify Which Entry Point to Start



Provides a thorough evaluation of your goals and how to address these goals through IBM Entry Point projects



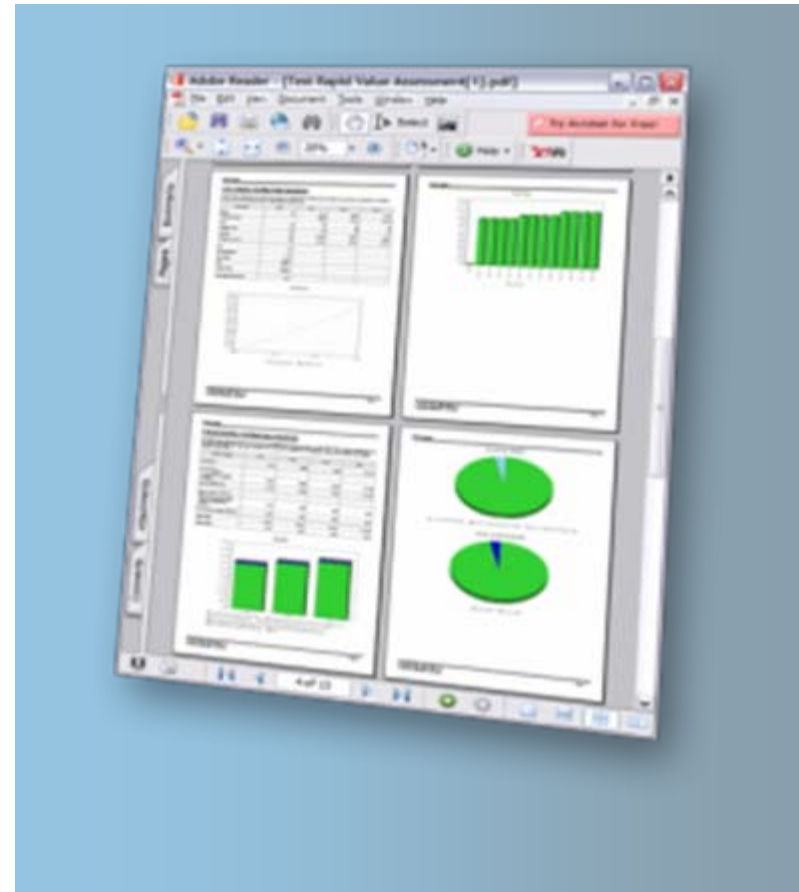
Link to Online SOA Business Value Analyzer:
www.ibm.com/soa/value



Outline the immediate and long-term results from this strategy while avoiding discussions about specific version numbers and technical jargon



- ROI Tool leverages IDC/Alinean Data as a foundation
- Designed to help create value realization for your project
 - *Projected costs*
 - *Expected savings*
 - *Financial analysis*
 - *Calculated ROI*



Contact WSAC@US.IBM.COM



Business Case Information

- Organization Questionnaire
- Project Selection
- Project Portfolio
- Benefits Summary (Selected Projects)
- Costs Summary (Selected Projects)
- ROI Analysis (Selected Projects)
- Organization Financial Impact (Selected Projects)
- Resource Summary (Selected Projects)

Input Customer Data

BUSINESS CASE PROFILE - ORGANIZATION QUESTIONNAIRE

IBM Business Value Analyst™

The IBM Business Value Analyst™ Tool and various analysis models (ten, 'ates) were developed independently by leading IT and ROI tool developer and consultancy Alinean, Inc. This analysis tool and model examines current capability and maturity, costs and opportunities and quantifies potential advantages for IBM solutions to reduce current IT and business costs, improve productivity, reduce business risks, improve availability and service levels and drive business alignment and opportunities. The tool collects information about current costs and opportunities for improvement (defaulting to Alinean research when actual data is not available), then uses research from customer case studies to project potential savings and business benefits using proposed solution sets. Any and all data should be adjusted to specific company metrics, opportunities and assumptions.

For the organization, specify information about the overall company here, then in the next section select specific IBM projects to consider for cost-benefit analysis. Projects could be created for various proposed solution sets or full specific proposed projects by specific business group, data center or location.

Current Company Profile

Industry company or organization operates in
 Primary geographic location
 Primary site location

Banking	▼	?
Canada	▼	?
Metropolitan	▼	?

Current annual revenue or equivalent (in millions)	\$15,000.0	?
Average annual expected growth in revenue or equivalent (over analysis period)	5.0%	?
Net incremental contribution	23.0%	?

Number of employees for the company or organization (in total)	54,300	?
Average revenue or equivalent per employee (annual revenue or equivalent / # of employees)	\$276,243	?
Average annual unburdened salary for employees	\$62,660	?
Average annual growth in the number of employees	5.0%	?

Salary Adjustment Factors

Average burdened salary rate	35.0%	?
Average salary increase per year	4.0%	?
Average hours worked per year	1,720	?





Financial Justification for WebSphere Extended Deployment



Benefits Summary - By Category	Year 1	Year 2	Year 3	Total
Total Benefits	\$354,644	\$1,252,680	\$1,473,309	\$3,080
IT Cost Reductions				
<input checked="" type="checkbox"/> Improve IT Infrastructure Management Productivity	\$354,644	\$776,670	\$924,237	\$2,055
<input checked="" type="checkbox"/> Reduce IT Infrastructure Expenses	\$0	\$476,010	\$549,072	\$1,025
Total IT Cost Reductions	\$354,644	\$1,252,680	\$1,473,309	\$3,080
Business Operating Efficiency				
<input type="checkbox"/> Improve Application Availability - Back Office Applications (Indirect)				\$1,705
Total Business Operating Efficiency	\$0	\$0	\$0	
Business Strategic Advantage				
<input type="checkbox"/> Improve Application Availability - Front Office Applications (Indirect)	\$189,560	\$396,181	\$431,838	\$1,017
Total Business Strategic Advantage	\$0	\$0	\$0	
Direct Benefits	\$354,644	\$1,252,680	\$1,473,309	\$3,080
Indirect Benefits	\$0	\$0	\$0	



Summary of potential benefits

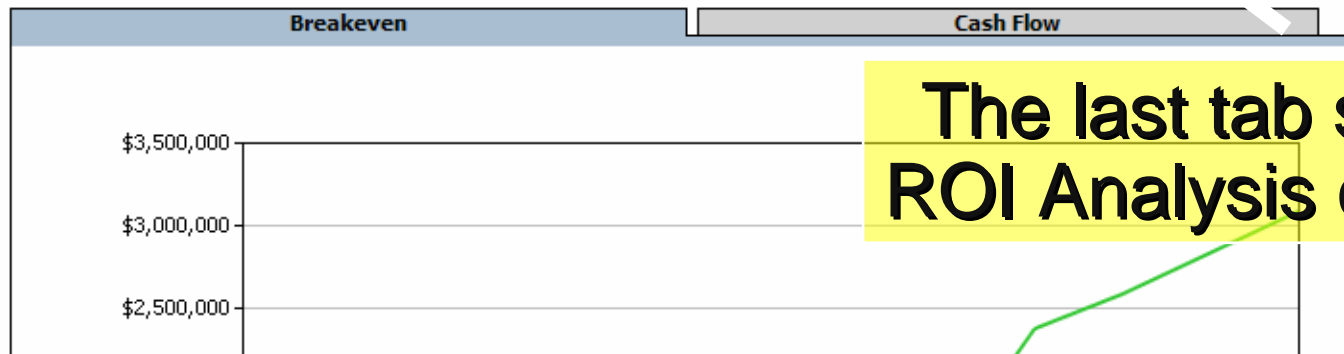
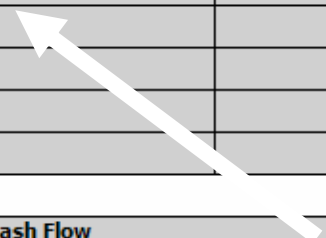
Benefits	Benefits By Category	Direct vs Indirect Benefits	Top Benefits	Benefits By Goal	Benefits By Stakeholder	Benefits by Organizational Impact
----------	----------------------	-----------------------------	--------------	------------------	-------------------------	-----------------------------------

Financial Justification for WebSphere Extended Deployment



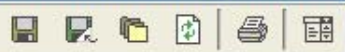
Solution Selection Questionnaire (As Is) Benefits Costs **ROI Analysis**

ROI Analysis	Initial	Year 1	Year 2	Year 3
Benefits	\$0	\$354,644	\$1,252,680	\$1,473,309
Cumulative Benefits		\$354,644	\$1,607,323	\$3,080,632
Costs	\$363,600	\$192,960	\$64,320	\$64,320
Cumulative Costs	\$363,600	\$556,560	\$620,880	\$685,200
Cash Flow	(\$363,600)	\$161,684	\$1,188,360	\$1,408,989
Cumulative Cash Flow	(\$363,600)	(\$201,916)	\$986,443	\$2,395,432
ROI	350%			
Risk Adjusted ROI	260%			
NPV Savings	\$1,622,667			
IRR	143%			
Payback period (including deployment period)	13 month(s)			
Risk Adjusted Discount Rate	14.5%			



The last tab shows the ROI Analysis calculations

Financial Justification for WebSphere Extended Deployment



IBM Business Value Analyst™ -- Web Page Dialog

Solution Selection

Prepare a Report

- ROI
- Benefits
- Cumulative Benefits
- Costs
- Cumulative Costs
- Cash Flow
- Cumulative Cash Flow
- ROI
- Risk Adjusted ROI
- NPV Savings
- IRR
- Payback period (including depl
- Risk Adjusted Discount Rate

Select the output type from the dropdown menu on the right and click the 'Submit' button to generate a report. For RTF or PDF output select the sections to include in the report (checkboxes).

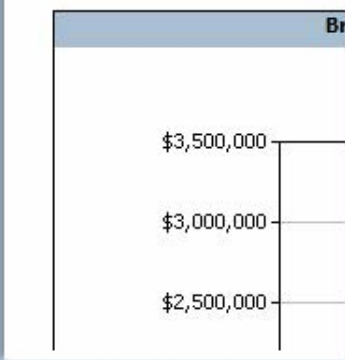
Rich Text Format (.rtf) ▼
 Adobe PDF
 Rich Text Format (.rtf)
 PowerPoint (.ppt)

Include All	Analysis Sections
<input type="checkbox"/>	
<input checked="" type="checkbox"/>	Cover Page
<input checked="" type="checkbox"/>	Table of Contents
<input checked="" type="checkbox"/>	Executive Summary
<input checked="" type="checkbox"/>	ROI Analysis
<input checked="" type="checkbox"/>	Benefit Summary
<input checked="" type="checkbox"/>	Cost Summary
Appendix	
<input type="checkbox"/>	Questionnaire
<input type="checkbox"/>	Solution Selection
<input type="checkbox"/>	Worksheet Details
<input type="checkbox"/>	ROI Analyst Methodology
<input type="checkbox"/>	Benefit Realization
<input type="checkbox"/>	Key Metrics
<input type="checkbox"/>	Display All Sections (including collapsed sections)
<input type="checkbox"/>	Display Notes

Create Report Cancel

Year 3	
	\$1,473,309
	\$3,080,632
	\$64,320
	\$685,200
	\$1,408,989
	\$2,395,432

Create a report in Word, Powerpoint, or Adobe PDF



Back Next

Helping Business to Understand Your SOA Strategy

SOA Strategy Services



Develops an SOA Strategy, Architecture, Business Case, Governance Framework, and Roadmap to guide the transformation of an organization and systems towards a service-oriented model

Intended Audience

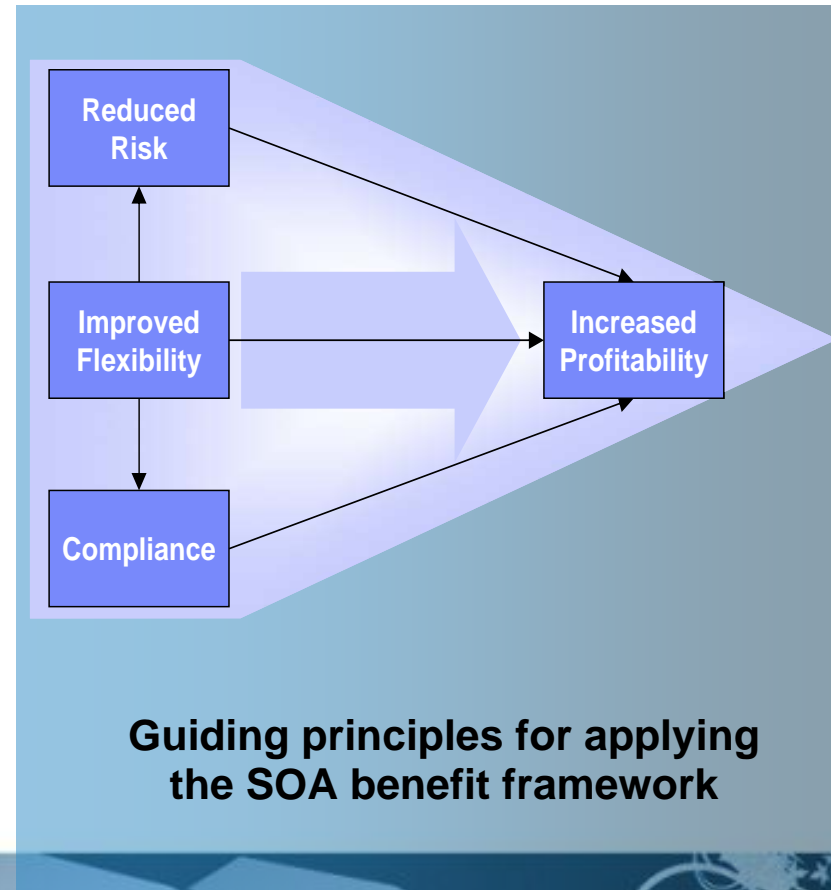
- CIOs and CxOs

Key Deliverables

- Customized Component Business Model Map
- SOA Reference Architecture
- SOA Vision and Strategy
- SOA Business Case
- SOA Governance Operating Principles & Framework
- SOA Roadmap

Average Engagement Length

- 6-12 Weeks















Cite analyst data on the growth and adoption of service oriented architectures and point to relevant SOA success stories within your industry (and by your competitors)



Customers Continue Success via SOA Entry Points



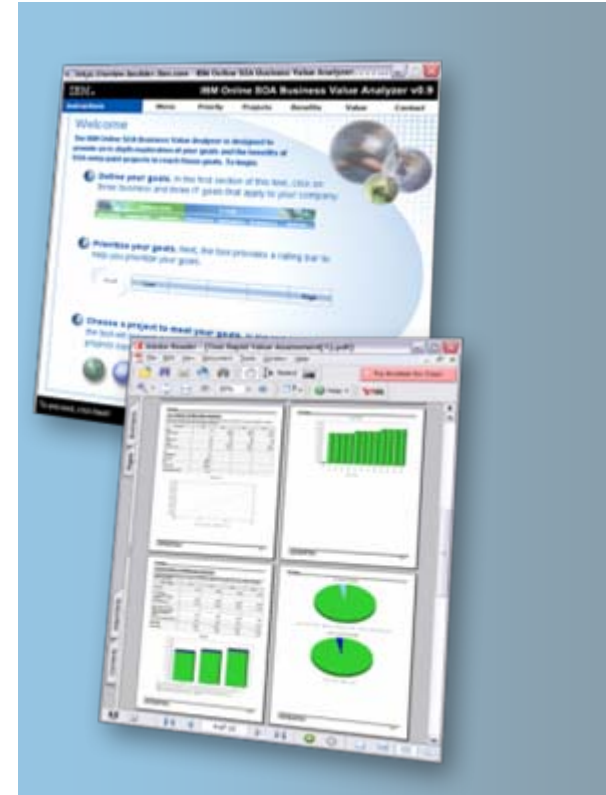
	What is it?	Customer	Value
 People	Greater productivity and flexibility through targeted user interactions for improved operations and collaboration		Compliance with new legislation & education to enabling collaboration among parents, teachers, students, administrators.
 Process	Achieve business process innovation through treating tasks as modular services		Information reaches decision makers 70% faster by enabling LOBs to orchestrate modular services.
 Information	Provide trusted information in business context by treating it as a service		Handle 5x increase in customers and eeduced order processing time.
 Reuse	Service-enable existing assets and fill portfolio gaps with new reusable services		Improved speed to market with new products. Savings of 4M pounds to date, 1M pounds a quarter.
 Connectivity	Connect systems, users, and business channels based on open standards		Cut average problem resolution time from two days to less than one hour, helping to boost customer satisfaction levels

See "Success Stories" at: www.ibm.com/soa



Act Now: Sell Your SOA Project to Your CEO!

- **Learn the new language of business**
 - Read article “Selling SOA to the CEO”
http://searchwebservices.techtarget.com/tip/0,289483,sid26_gci1240058,00.html
- **Try the Online SOA Business Value Analyzer:**
 - www.ibm.com/soa/value
- **Leverage Rapid Value Assessment Tool**
 - Contact WSAC@US.IBM.COM
- **Subscribe to the IBM SOA Newsletter**
 - See SOA Newsletter at: www.ibm.com/soa



Contact your IBM representatives or Business Partner for Business Value with SOA

Questions?



© IBM Corporation 2007. All Rights Reserved.

The workshops, sessions and materials have been prepared by IBM or the session speakers and reflect their own views. They are provided for informational purposes only, and are neither intended to, nor shall have the effect of being, legal or other guidance or advice to any participant. While efforts were made to verify the completeness and accuracy of the information contained in this presentation, it is provided AS IS without warranty of any kind, express or implied. IBM shall not be responsible for any damages arising out of the use of, or otherwise related to, this presentation or any other materials. Nothing contained in this presentation is intended to, nor shall have the effect of, creating any warranties or representations from IBM or its suppliers or licensors, or altering the terms and conditions of the applicable license agreement governing the use of IBM software.

References in this presentation to IBM products, programs, or services do not imply that they will be available in all countries in which IBM operates. Product release dates and/or capabilities referenced in this presentation may change at any time at IBM's sole discretion based on market opportunities or other factors, and are not intended to be a commitment to future product or feature availability in any way. Nothing contained in these materials is intended to, nor shall have the effect of, stating or implying that any activities undertaken by you will result in any specific sales, revenue growth or other results.

Performance is based on measurements and projections using standard IBM benchmarks in a controlled environment. The actual throughput or performance that any user will experience will vary depending upon many factors, including considerations such as the amount of multiprogramming in the user's job stream, the I/O configuration, the storage configuration, and the workload processed. Therefore, no assurance can be given that an individual user will achieve results similar to those stated here.

All customer examples described are presented as illustrations of how those customers have used IBM products and the results they may have achieved. Actual environmental costs and performance characteristics may vary by customer.

The following are trademarks of the International Business Machines Corporation in the United States and/or other countries. For a complete list of IBM trademarks, see www.ibm.com/legal/copytrade.shtml
AIX, CICS, CICSplex, DB2, DB2 Universal Database, i5/OS, IBM, the IBM logo, IMS, iSeries, Lotus, OMEGAMON, OS/390, Parallel Sysplex, pureXML, Rational, RCAF, Redbooks, Sametime, System i, System i5, System z, Tivoli, WebSphere, and z/OS.

Java and all Java-based trademarks are trademarks of Sun Microsystems, Inc. in the United States, other countries, or both.
Microsoft and Windows are trademarks of Microsoft Corporation in the United States, other countries, or both.
Intel and Pentium are trademarks or registered trademarks of Intel Corporation or its subsidiaries in the United States and other countries.
UNIX is a registered trademark of The Open Group in the United States and other countries.
Linux is a registered trademark of Linus Torvalds in the United States, other countries, or both.

Other company, product, or service names may be trademarks or service marks of others.