



IBM SOA Summit



* Informations valorisées et SOA,
le couple gagnant.



IBM SOA*
Summit



Governance of Enterprise Architectures Transformation / Session Number

Pascal Négros

@IBM Corporate BT/CIO

Strategy Formulation

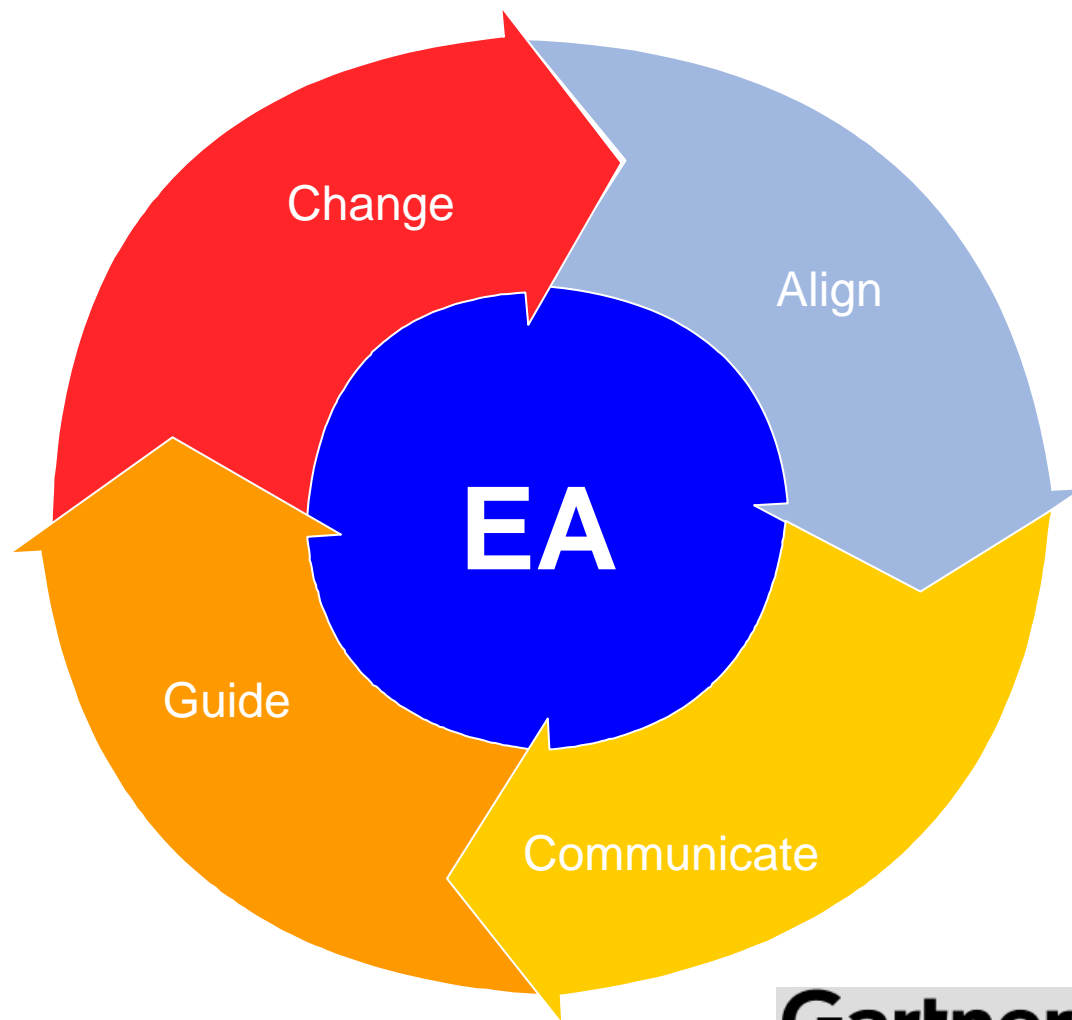
Governance of Transformation

Alignment of Enablement to Strategy

Implementing Enterprise Architecture drives both IS and business benefits

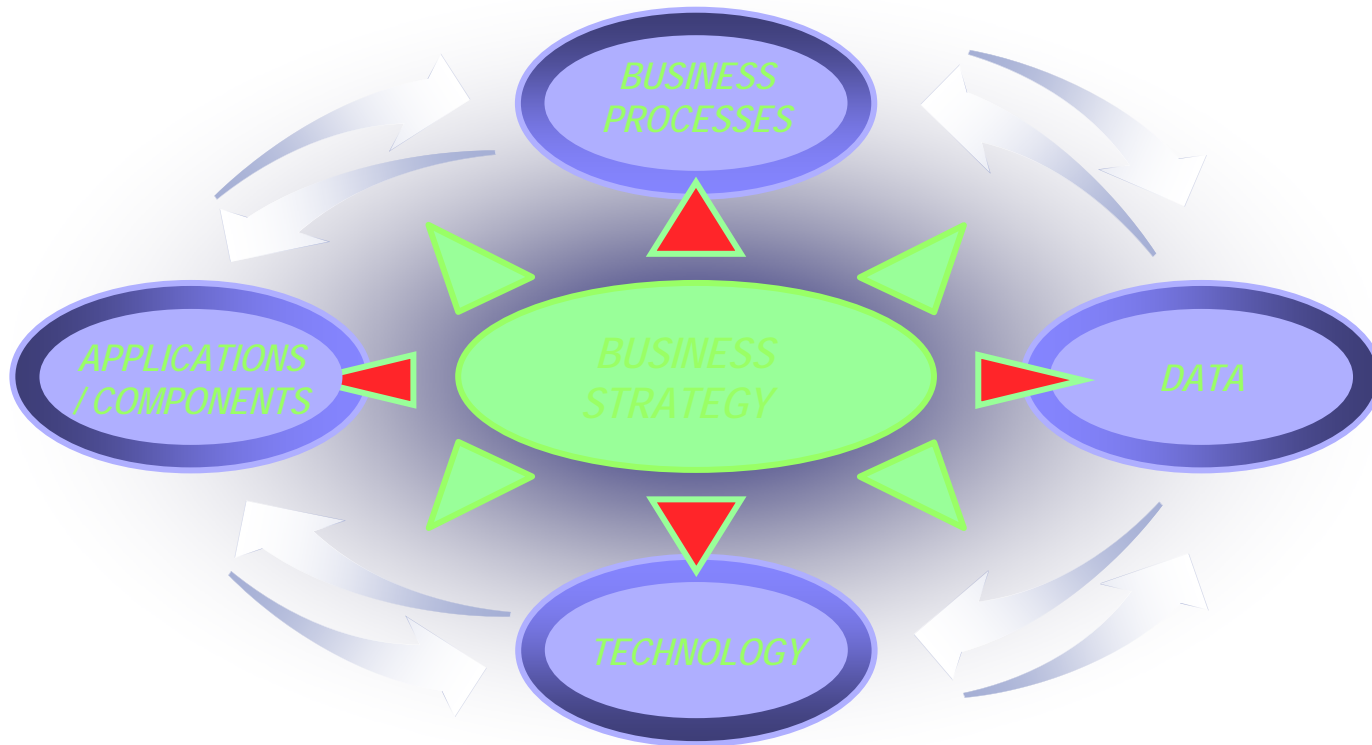


- **Align IT direction with business strategy using the EA process**
- **Communicate IT's vision and value using EA deliverables and staff**
- **Guide IT investment and design decisions with EA deliverables**
- **Change business and IS behaviors using EA assets**

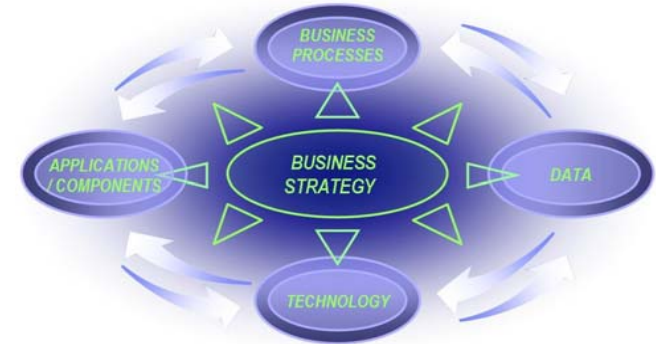


Gartner





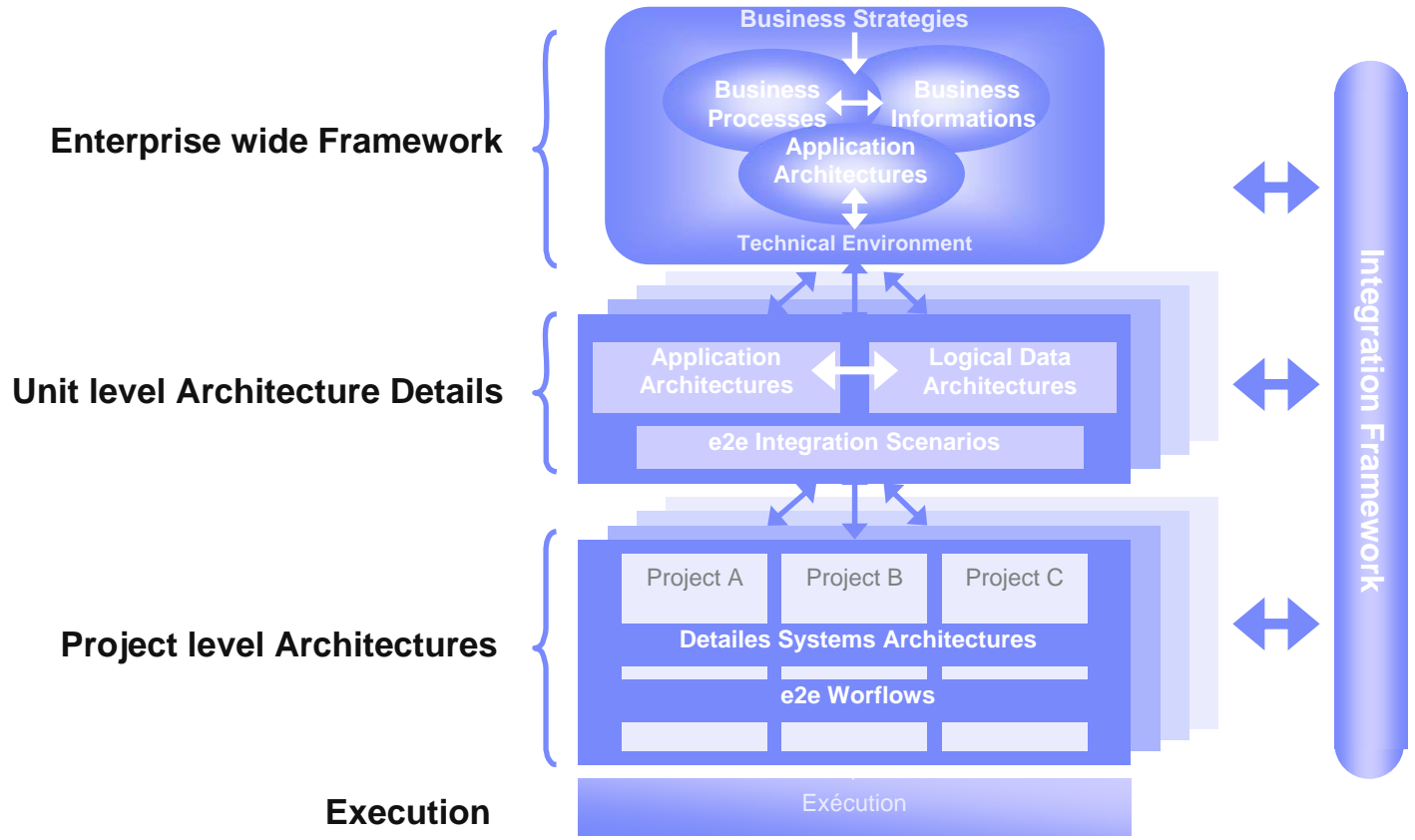
The EA enables Integration, Consistency and Reuse across IBM's Enterprise and IT deliverables



- **Enable enterprise wide governance framework**
 - Establish criteria for reuse and integration
- **Accelerate on demand responsiveness**
 - Enable strategy driven, process driven, rules driven architecture
 - Enable migration from current to strategic environment
- **Enhance IT quality and productivity across enterprise, unit and project level content**
 - Enable reuse and sharing across unit and project level deliverables
 - Provide a consistent approach to building the architecture deliverables
- **Enhance Business Decision support and analysis**
 - Enable drill down and roll-up of content across enterprise, unit and project levels
 - Provide impact analysis, views, analysis and reports
- **Align portfolio analysis /decisions with business and IT priorities**

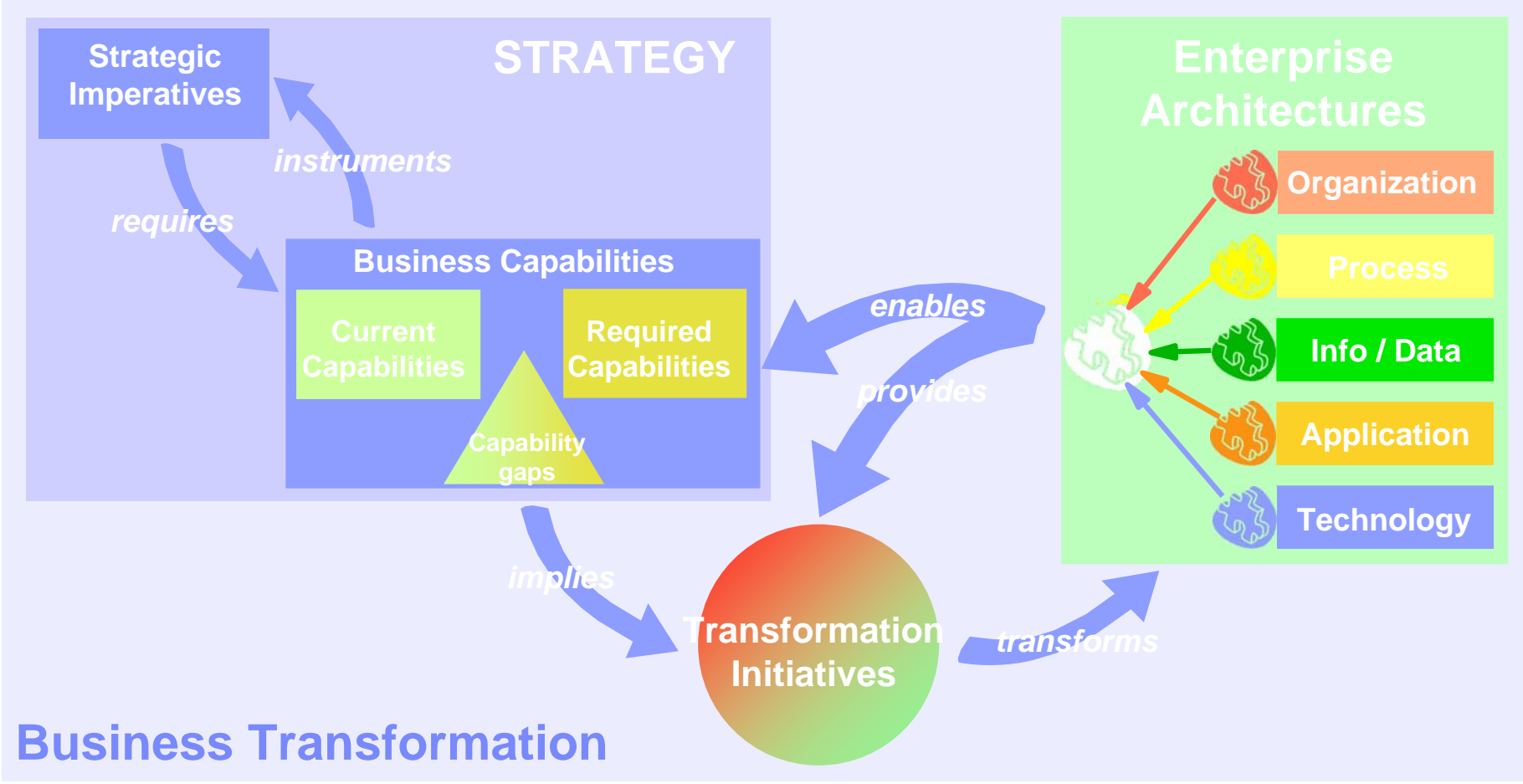
The EA provides an intelligent framework

Enables integration, consistency and reuse across All levels of IBM's Architecture

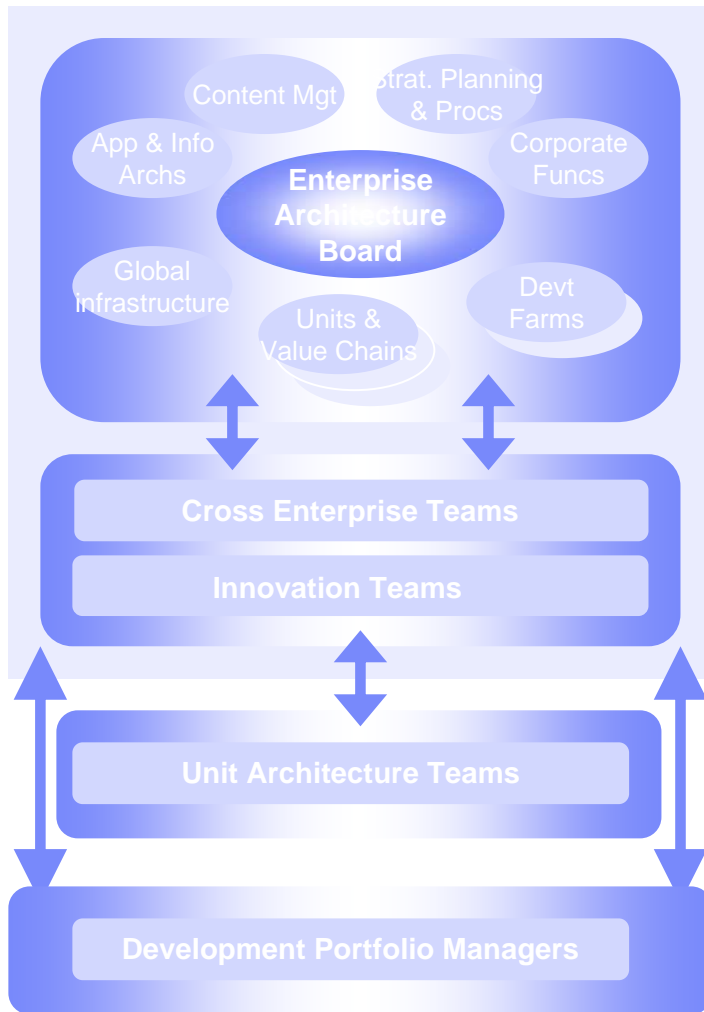


Common metamodel enables consistency, integration and analysis at 'All Levels' of the Enterprise Architecture





The EA Board is a decision making organization which controls cross units objectives



- **Enterprise Architecture council**
 - Defines objectives and priorities for cross Unit Architectures
 - Enforces and approves cross Units Architectures
 - Target Architectures (“Blueprint”), Migration Roadmaps
 - Enterprise and Industry Standards
 - Drives and controls the implementation of Architectures
 - Resolves cross Units Issues
 - Focuses on innovations enabling On Demand
- **Cross Enterprise Teams**
 - Resolve cross Units Issues
 - Define key elements of Target Architectures
 - Ensure the Integration of Unit Architectures within EA
 - Define required standards and methods
- **Unit Architecture Teams**
 - Implement defined Standards and Approaches
 - Define and Reuse Components
 - Validate projects at each Milestone (conformance to EA standards and criteria)
 - Control Deployment and resolves Issues
- **Development Portfolio Managers**
 - Control Solution conformance to EA elements
 - Identify Component reuse Opportunities

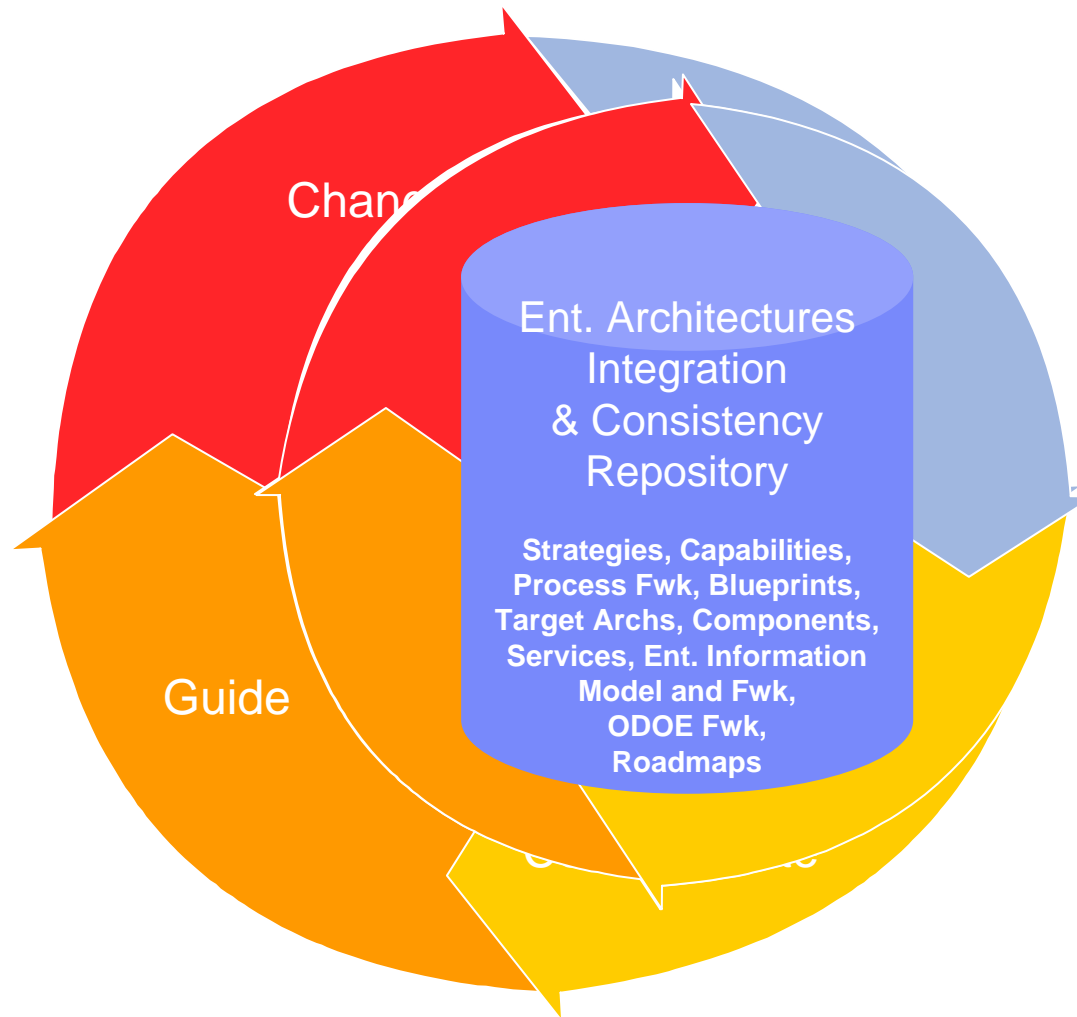
The Enterprise Architecture enables drill down and roll up of Unit and Project level content

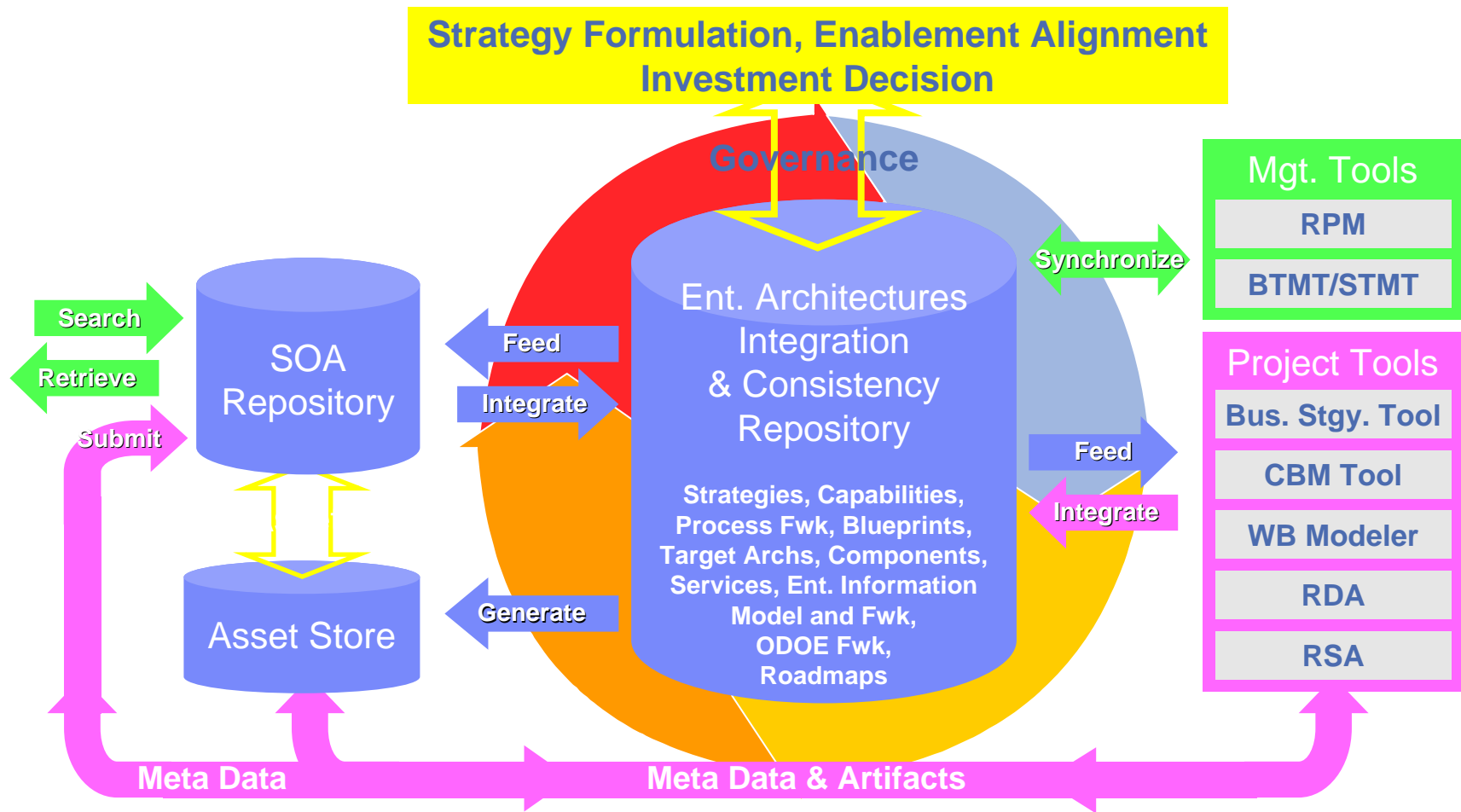


	Strategy	Process	Applications/ Components	Data	Technology
Enterprise Level	Bus. Strategies Ent. Capabilities Initiatives Metrics Business rules	Ent. Process Hierarchy Control Points Usage Classification (Ent. Proc.Framework)	Cross Unit Architectures enabling Processes and Strategies Implementation Criteria (Blueprint)	Enterprise Information enabling Processes and Applications Data Standards (Subject Areas, Conceptual DM)	Technologies and relationship to Architectures Standards (Technology Framework)
Logical or Unit Level	Unit Current Capabilities End State Capabilities Gap Analysis Unit Initiatives Unit Objectives and Metrics	e2e Unit Processes Events Scenarios Roles Design e2e VC processes	Detailed and Unit Level Architectures H/L Application/Component design	Business Area Data Model (Community Model) ERD diagrams	Design Technology enablers Reference Architectures
Operational level	Project Level Objectives and Metrics (Dashboards)	Project Level e2e Activity Flows Simulation flow Generate Workflow BPEL	Detailed Design of Application / Components Generate Code	Project Level Logical Data Models Physical Data Models	Technology and Infrastructure Implementaiton Details (Infrastructure)

WB M RSA & RDA RPM Tivoli QW

BT/CIO uses EA to align IT direction, communicate vision and value, guide decisions and drive change





IBM SOA*
Summit



Governance of Enterprise Architectures Transformation / Session Number

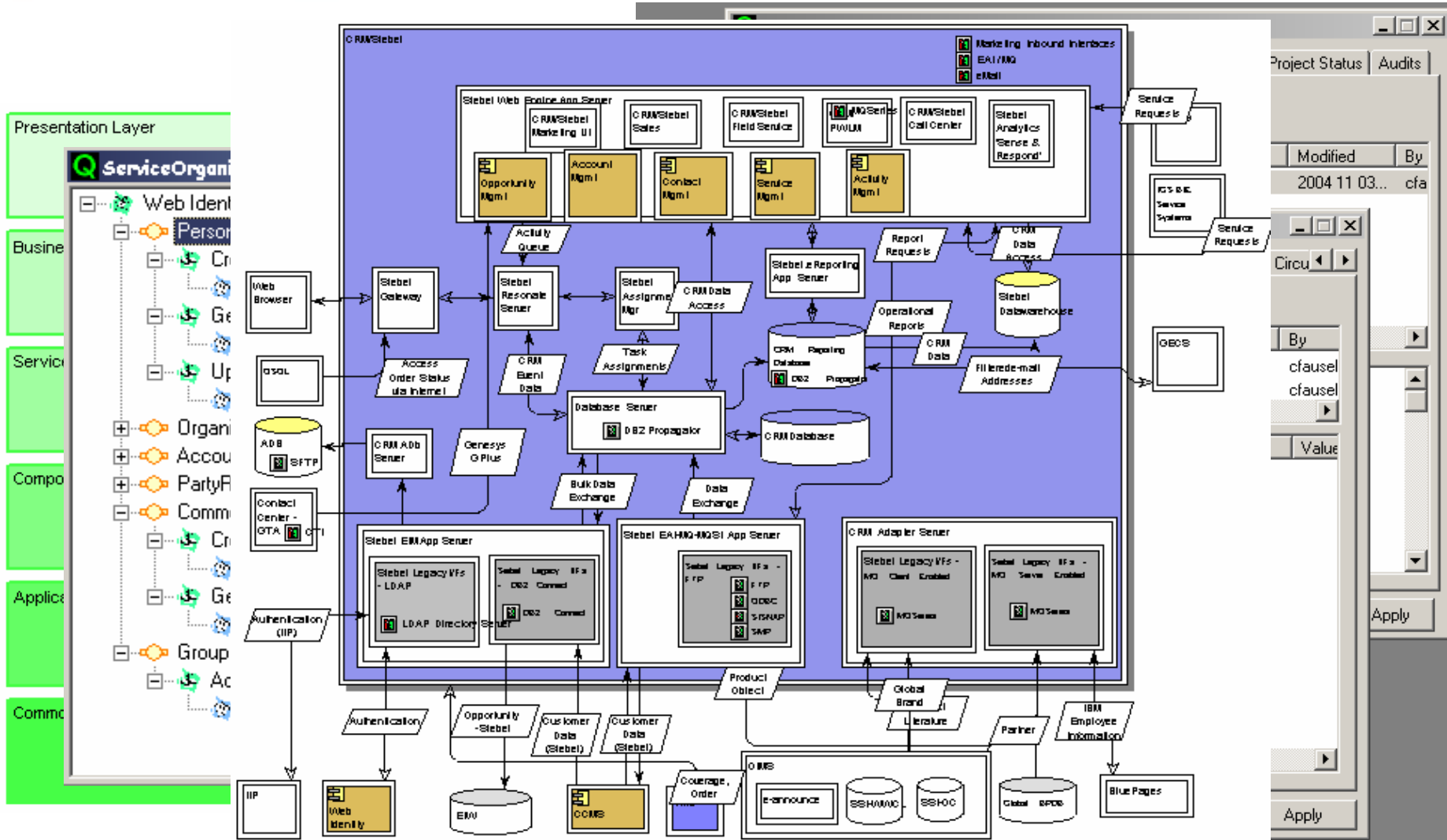
Pascal Négros

@IBM Corporate BT/CIO

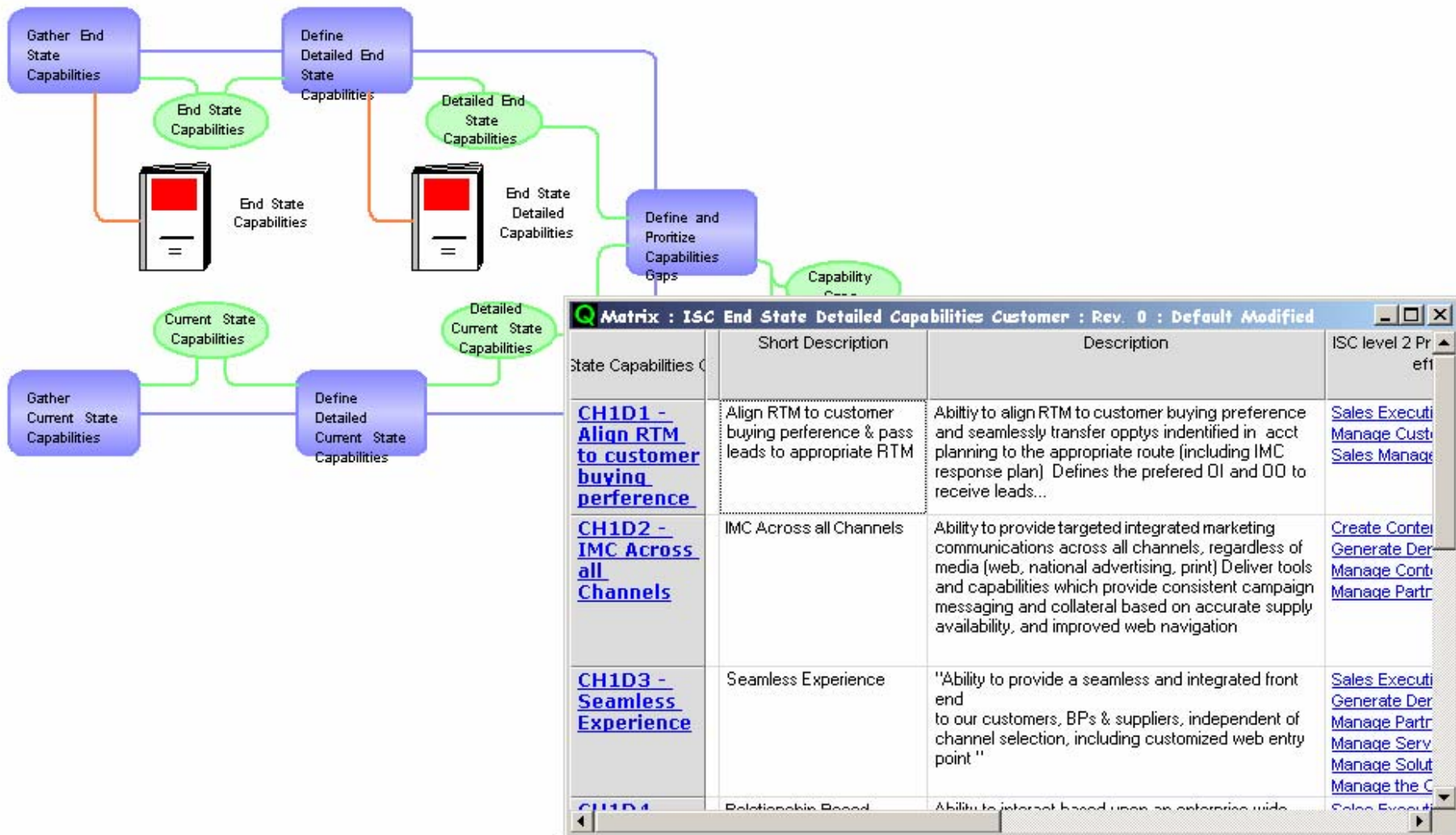
Snapshots



Navigate in the EA Knowledge



Formulate the Business Strategy

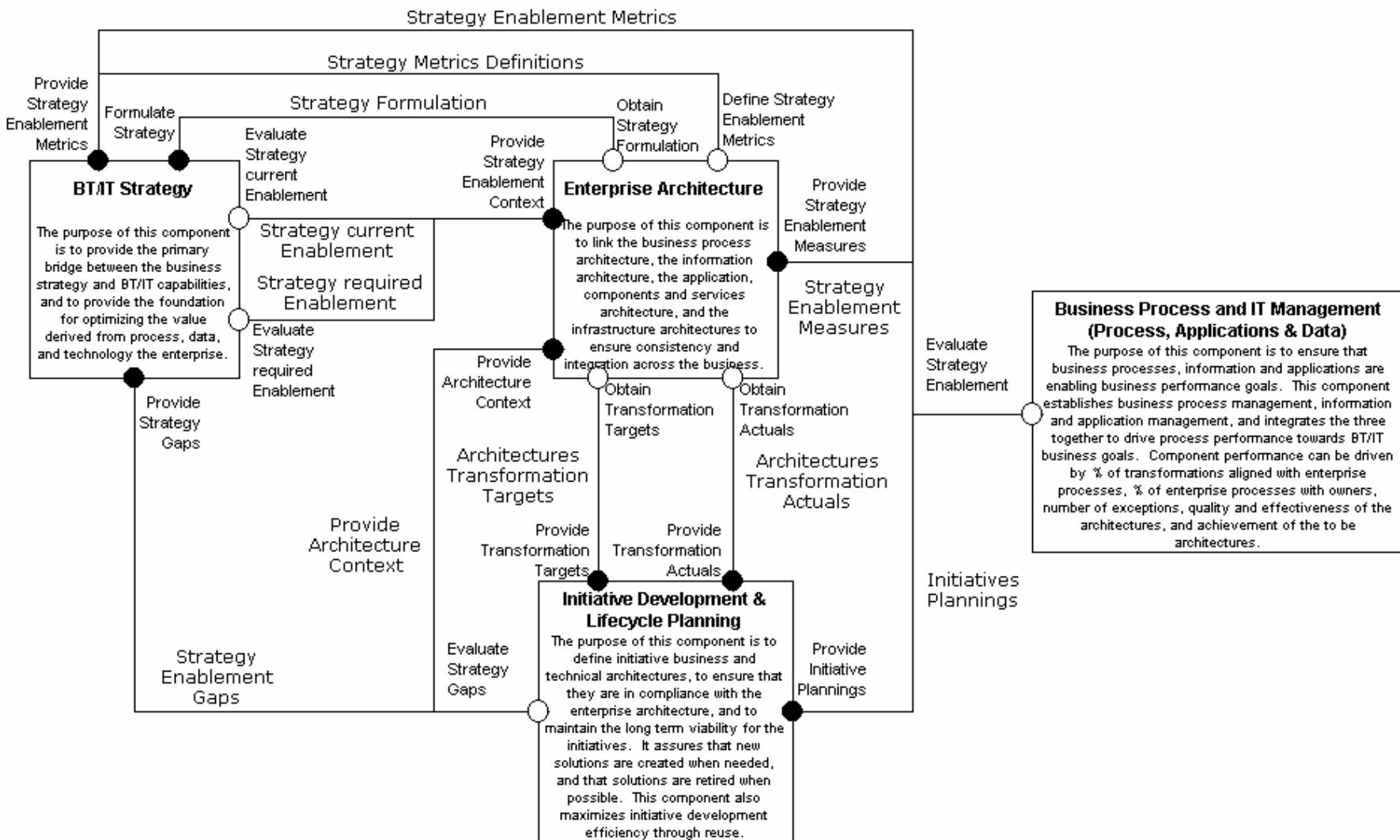


« Componentize » the Business (BT/IT example)

	BT/IT Business Relationship Management	BT/IT Business Management	Business Resilience	Process, Information and Application Management	Service and Solution Development	Service and Solution Deployment	Service Delivery and Support
Directing	Business Enablement Service & Solution Strategy BT/IT Organization Design	BT/IT Strategy Enterprise Architecture BT Methods and Enabling Infrastructure Technology and Services Innovation Strategic Investment Portfolio Management	Business Resilience Strategy Regulatory Compliance Strategy Integrated Risk Strategy	Business Information Management Strategy BT/IT Knowledge Management Strategy	Development Strategy	Deployment Strategy	Services Delivery Strategy IT Support Strategy
Controlling	Business Performance Planning Communications Planning	Financial Management Initiative Management & Value Realization Organizational Capability & Knowledge Management	Continuous Business Operations Regulatory Compliance Integrated Risk Management Security, Privacy & Data Protection	Information Architecture Information Resource Management Knowledge Resource Management	Initiative Development & Lifecycle Planning Initiative Level Architecture	Change Planning Release Planning Organizational Change Planning	Demand Management Service Level Agreement Management Operations Planning Infrastructure Resource Planning Support Services Planning
Executing	Business Performance Management BT/IT Communications	Business Process and IT Management (Process, Applications & Data) BT/IT Financial Reporting Alliance, Supplier & Service Provider Management	Business Resilience Regulatory Compliance Remediation	Data & Content Management Knowledge Capture & Availability	Service and Solution Construction Service and Solution Maintenance	Change Implementation Release Implementation Business Verification	Support Services Management Infrastructure Resource Management Infrastructure Operations

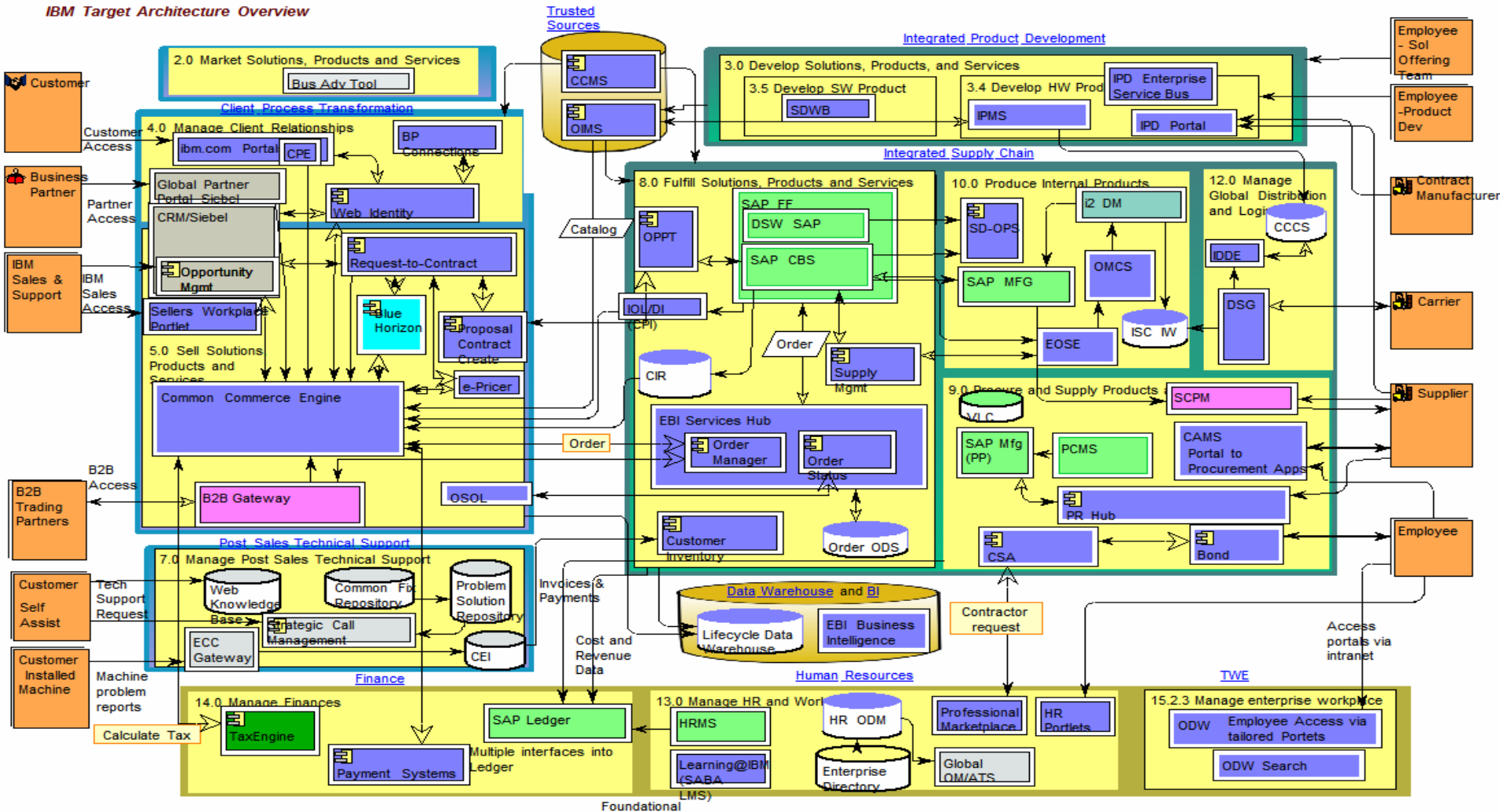


Model and Integrate the Business Components

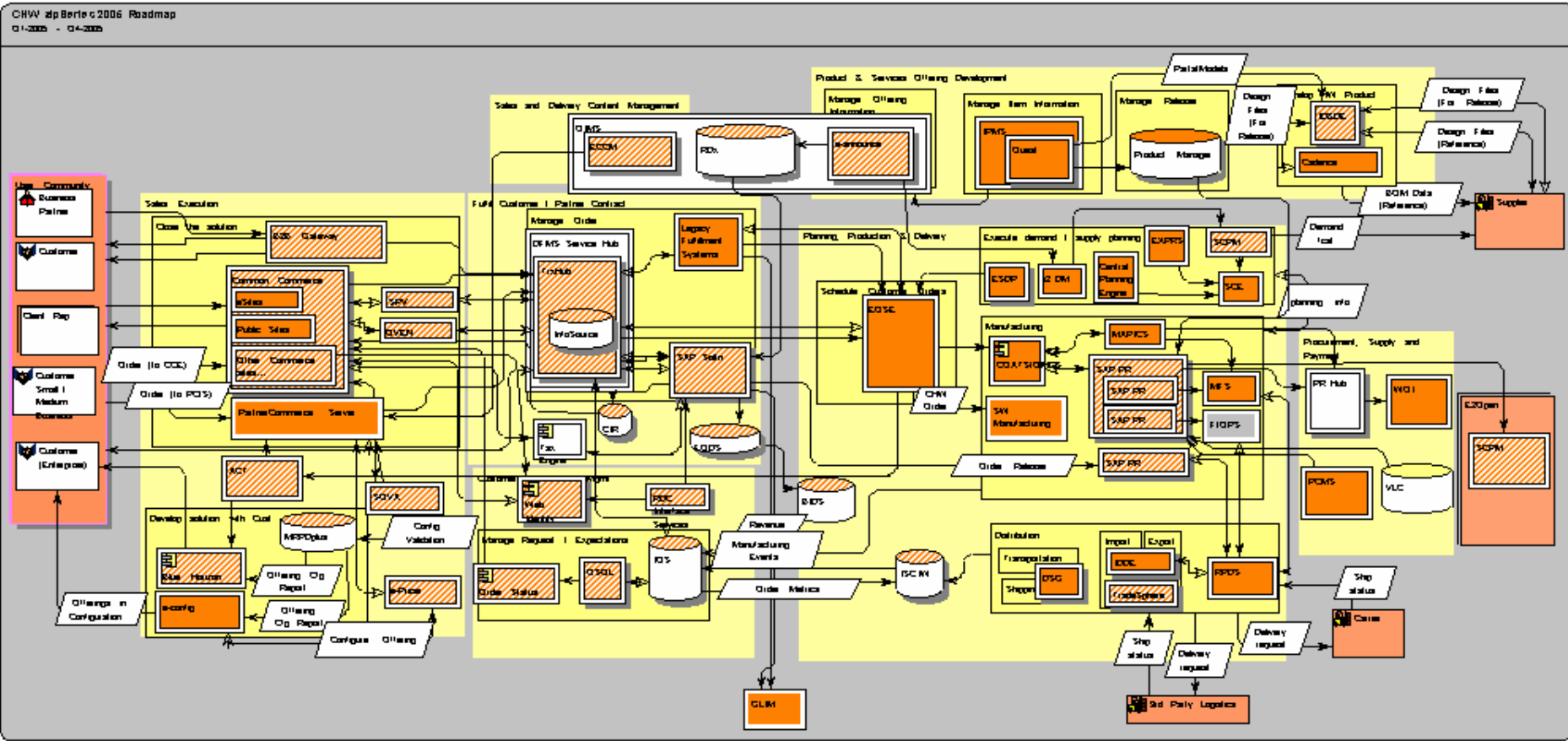


Define Blueprint Architectures

IBM Target Architecture Overview



Define Roadmaps



IBM SOA*
Summit



Governance of Enterprise Architectures Transformation / Session Number

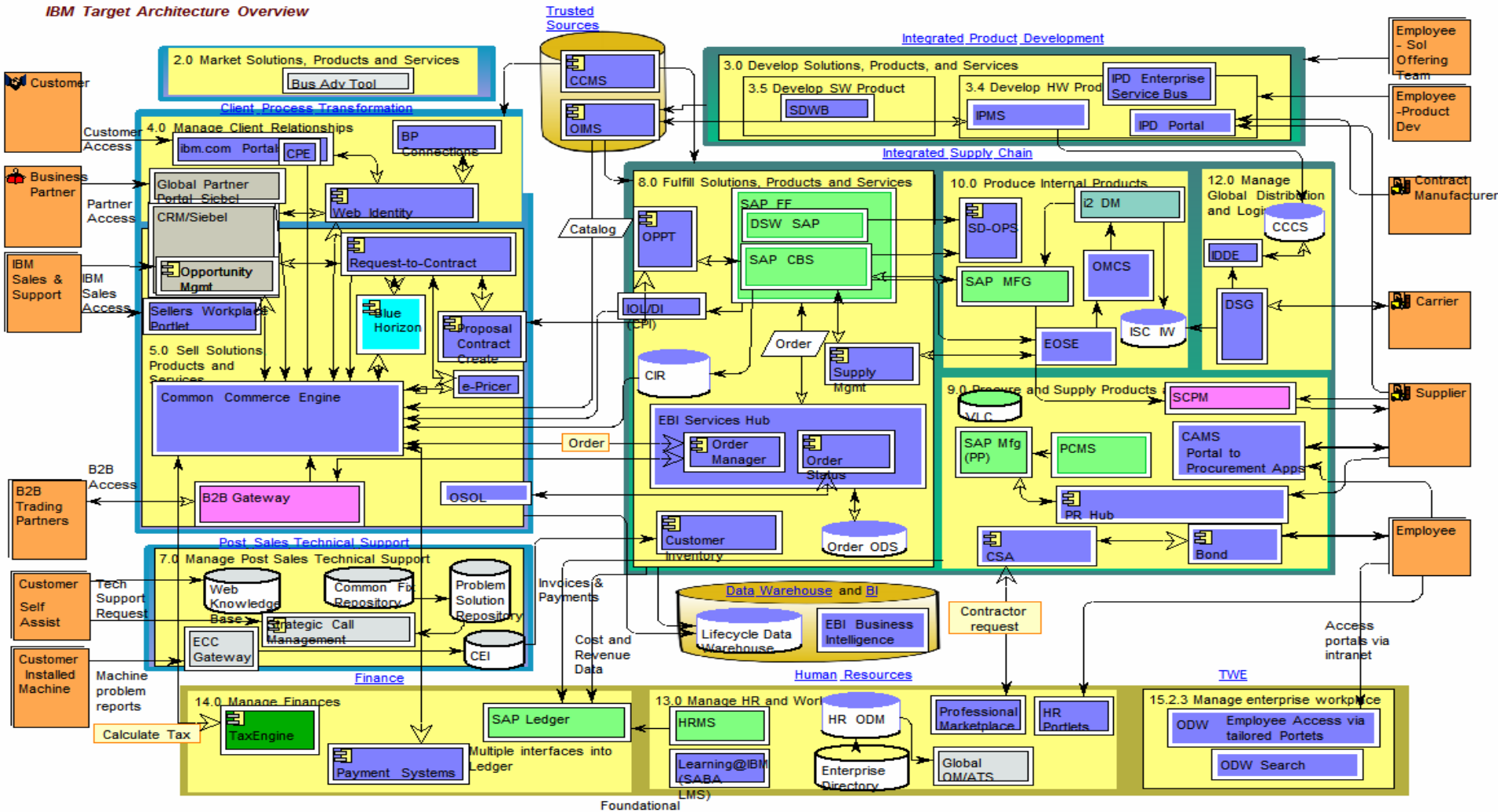
Pascal Négros

@IBM Corporate BT/CIO

EA in the 3D internet

Define Blueprint Architectures

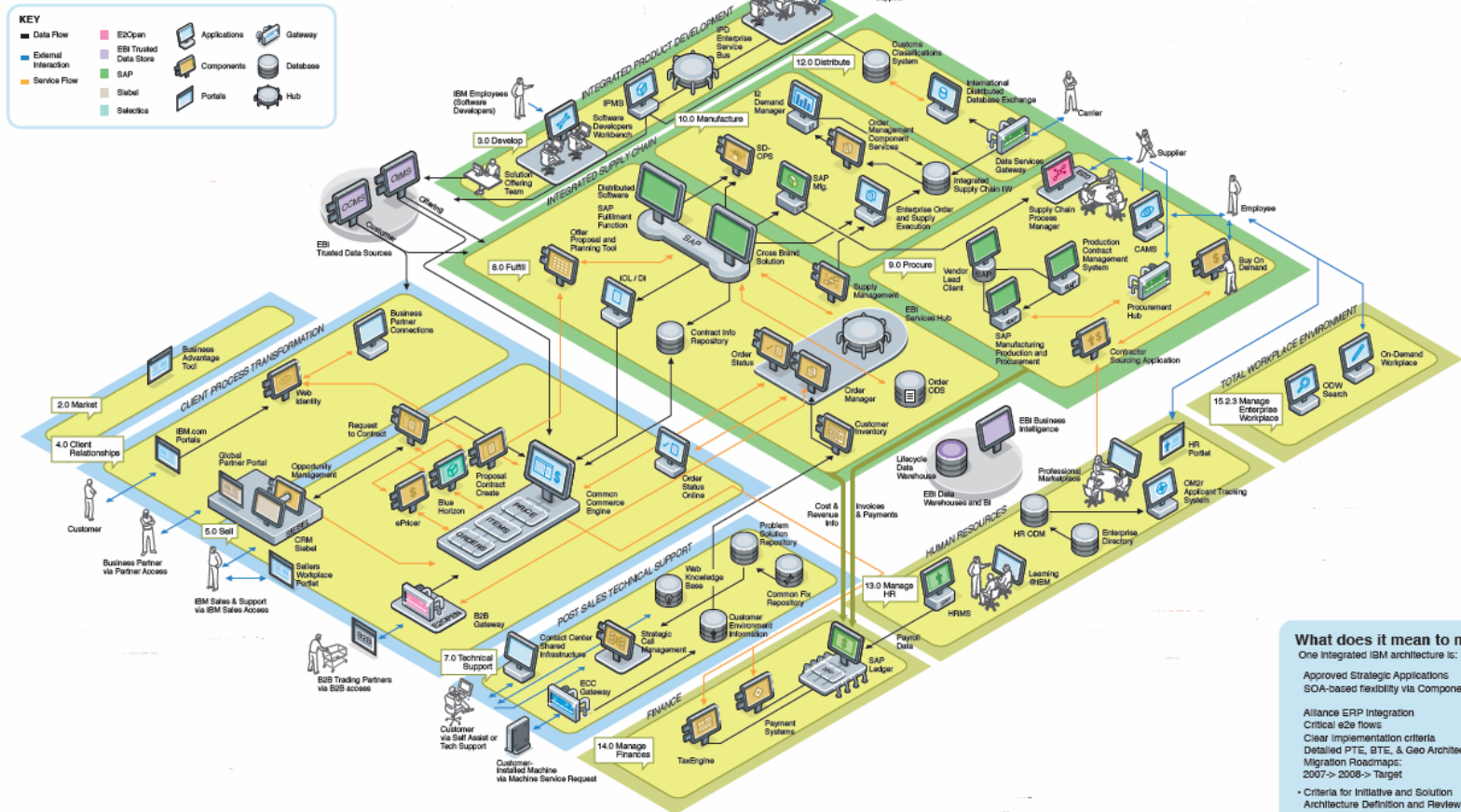
IBM Target Architecture Overview



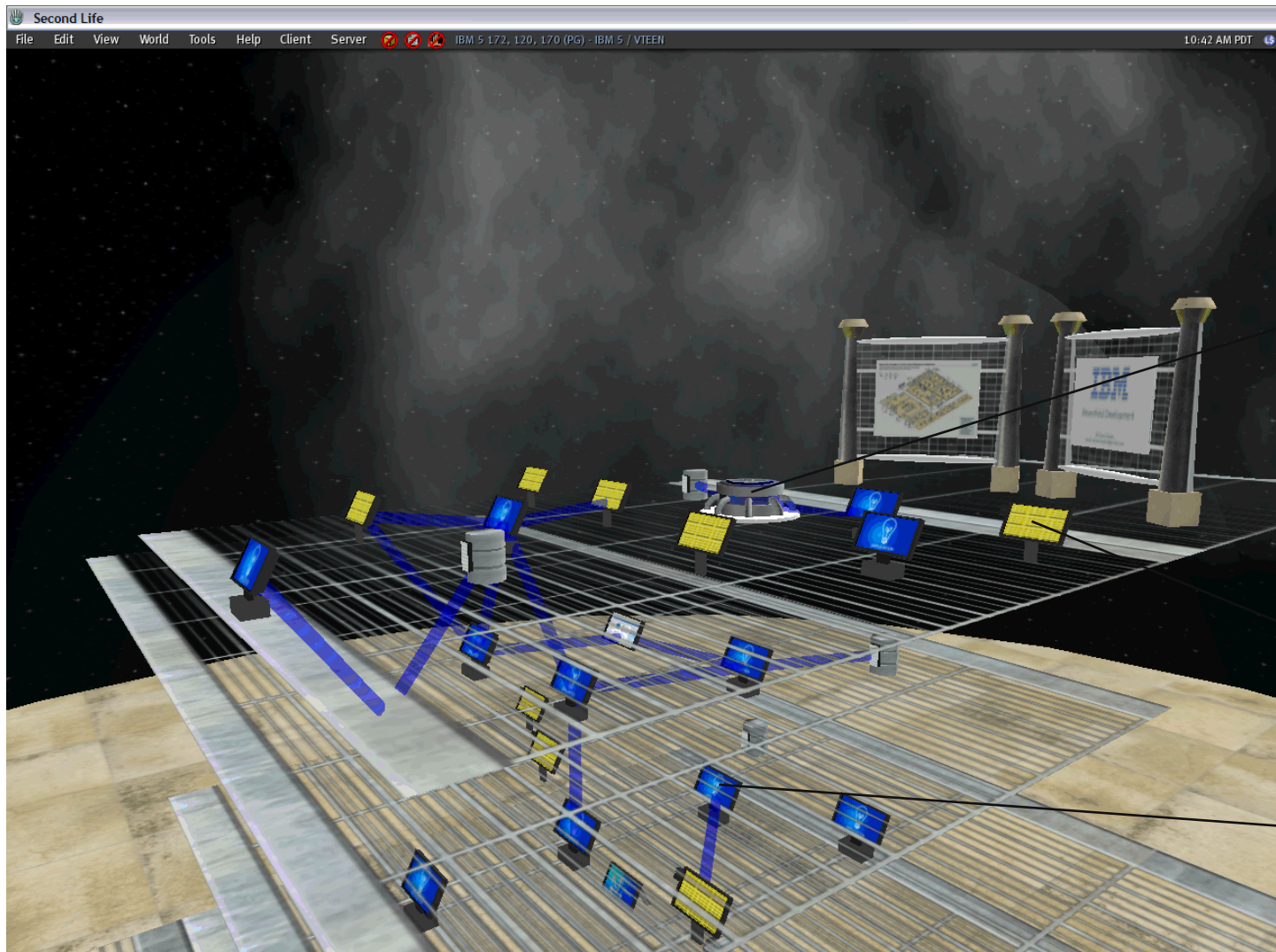
A 3D view of Blueprint Architectures

Where We're Headed: A 3-Year Look at Enterprise Architecture

The target architecture blueprint shows how components, services, applications and data will work together in the future to better support our business objectives and processes. This vision focuses on improving flexibility, integration and speed in a simple, enterprise-wide view. Here's a look at what's ahead:



Generated example: EA in 3DI



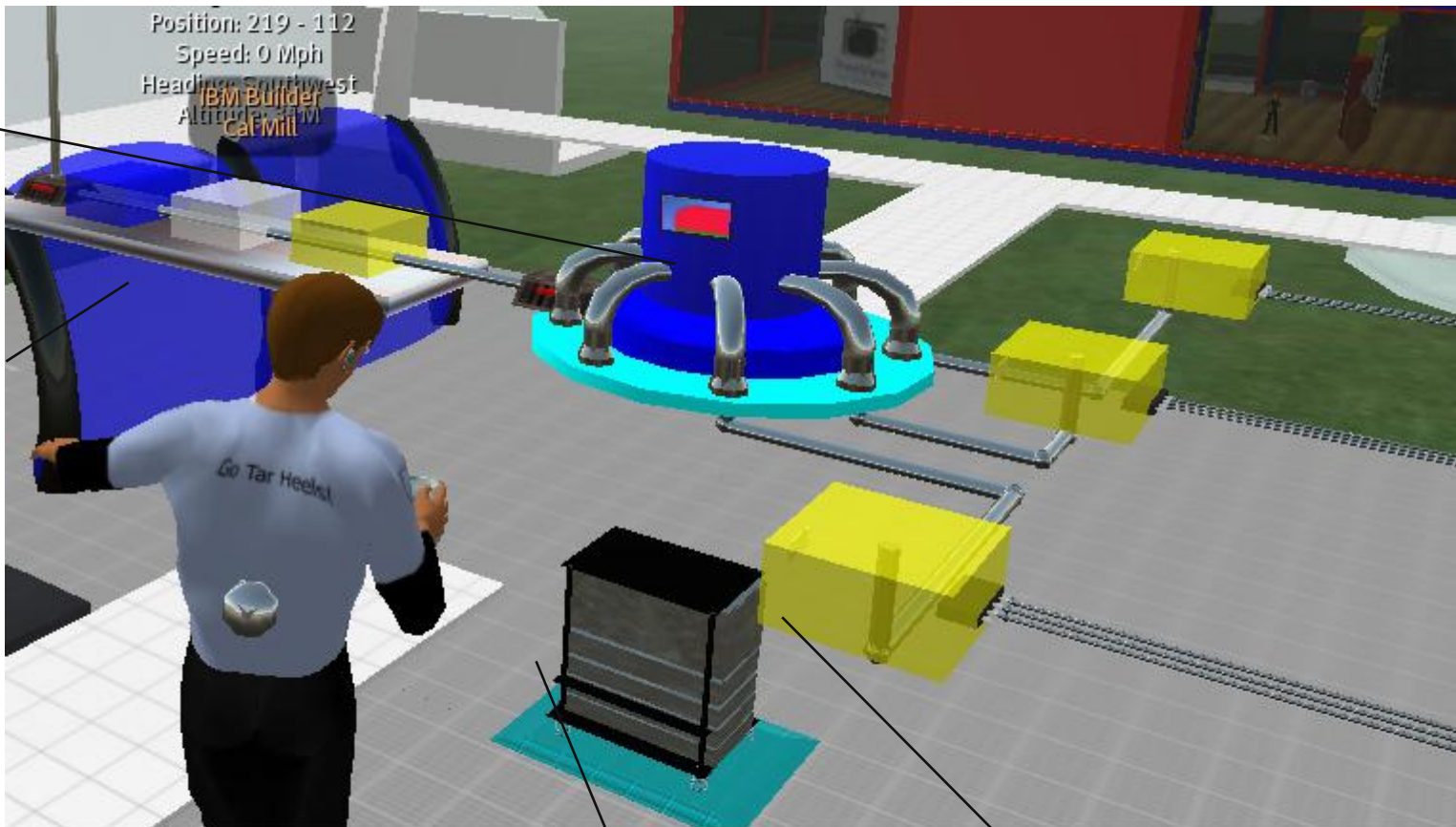
hub

Component

application



Build Example



hub

Common commerce engine

server

Fulfillment engine



Build example

