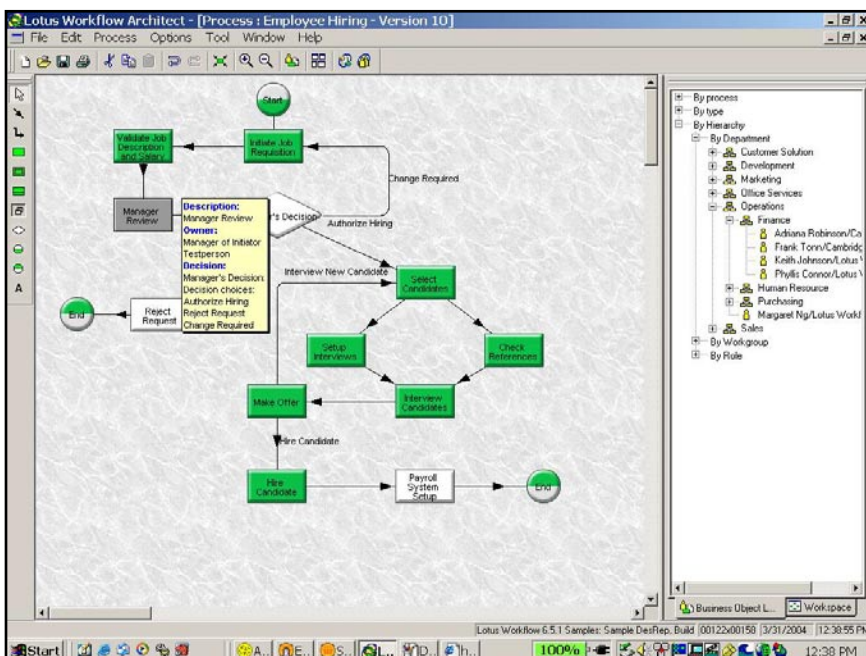


IBM Lotus Workflow 6.5.1

Highlights

- **Shares common attributes and platform support with other IBM Lotus Notes and IBM Lotus Domino 6.5.1 products**
 - **Extends the workflow capabilities of Lotus Domino to provide a powerful workflow-management system**
 - **Integrates with IBM Lotus Domino Document Manager 6.5.1 to streamline routing of documents**
- **Features customizable Web and Lotus Notes user interfaces**
 - **Provides instant messaging capabilities through out-of-the-box integration with IBM Lotus Instant Messaging and Web Conferencing 6.5.1**
 - **Helps improve response time and reduce operating costs**

To improve employee productivity and accuracy, organizations are leveraging workflow tools to automate, standardize and track repetitive business processes. They know that documenting and automating all the steps and approvals of standard business procedures can streamline these processes and help eliminate costly errors. IBM Lotus® Domino® developers have effectively used the Domino workflow capabilities to build complex and robust workflow applications. However, these applications are hard-wired into forms that require recoding for any changes—a time-consuming practice that is difficult to update and maintain. Now, you can implement a workflow solution that can integrate easily with your IBM Lotus Notes® and Lotus Domino environments—IBM Lotus Workflow 6.5.1. By providing point-and-click tools and reusable object libraries for routing rules, role assignment, deadline handling and task automation, even a complex process can be automated with little or no programming. Lotus Workflow makes it easier to document and refine your company's processes to reflect changing business needs.



IBM Lotus Workflow Architect presents an intuitive flow-chart-style interface to help speed application development.

Automate business processes throughout your enterprise

Lotus Workflow offers an easy-to-use application-development tool to design and adapt business processes and track work as it moves through your organization. With Lotus Workflow 6.5.1, enhanced capabilities help you use the Web—whether Internet, intranet or extranet—to manage business processes across your enterprise more effectively, saving you time and improving your employees' productivity.

Lotus Workflow includes a graphical design tool, robust database technology, built-in workflow logic, directory tools and Web-enhanced application programming interface (API) toolkits. By providing a platform for automating, refining and managing complex business processes, Lotus Workflow helps improve employee response time and reduce costs. Users can perform manual processes more quickly and consistently, with fewer errors, because steps are predefined and documented.

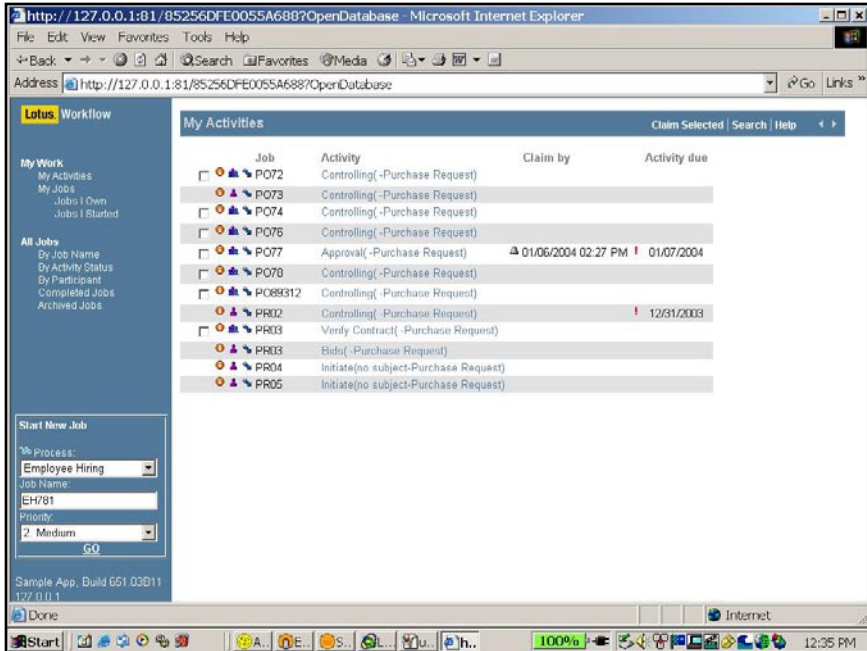
They can also complete paperwork faster because documents can be created, modified, stored, moved and managed electronically—eliminating the paper chase that can slow critical and routine business processes. And you can easily update workflow applications to reflect changes in your organization and to build increased efficiencies into critical business processes.

Workflow-management tools help keep your employees productive, because less time is spent tracking jobs and determining project status. End users can use the Lotus Workflow viewer to visually orient themselves to the progress of their work by tracing which steps of a process have been carried out or what is going on in parallel. They can also understand what the next step is and who is responsible for it. This immediate information provides a status update on the task at hand and lets workers know what else needs to be done to complete the process. And with improved collaboration and communication through integration with the Lotus Notes® and Lotus Domino 6.5.1 family of products, your team's best practices are easy to establish, keep and share through discussion threads, e-mails and Notes databases.

With Lotus Workflow 6.5.1, you can transform costly, people-based procedures, automating some activities and standardizing others, so that people perform their work consistently and efficiently. Refine and manage existing, complex business processes to improve response time and reduce operational costs. And maintain and modify workflow logic and application design with minimal or no programming overhead.

Designed to drive workflow processes

Effective workflow processes have three basic components: data, process logic and a directory of participants. Lotus Workflow includes the IBM Lotus Workflow Engine, IBM Lotus Workflow Architect and two Lotus Workflow Viewers—one Microsoft® Windows® technology-based and the other Web-based. Together, the components of Lotus Workflow can help you define the process logic. Identify and manage the participants and their roles. And efficiently organize data, objects and links—in IBM Lotus Domino® databases—that workflow applications implement to drive processes.



The My Activities view helps workers track their jobs and meet deadlines.

**Keep what you have;
leverage what you know**

Lotus Workflow builds on your developers' existing knowledge of IBM Lotus software products such as IBM Lotus Notes® and Lotus Domino, as well as other Lotus products. Fast integration with Lotus Domino Document Manager (IBM Lotus Domino.Doc®), Lotus Instant Messaging and Web Conferencing (IBM Lotus Sametime®), IBM Lotus Team Workplace (IBM Lotus QuickPlace®) and Notes® applications helps improve productivity and save time. Participants can see their work

assignments as part of a flow diagram using either the Windows technology- or Web-based Lotus Workflow Web Viewer to quickly and easily check the status and context of a currently running job. Lotus Workflow fully uses Lotus Domino secure message routing, replication and Web- browser support to help developers create workflow designs that are scalable, manageable and reusable across your entire enterprise. Lotus Workflow also leverages Domino database support of granular access control to improve security and management.

Integration with IBM Lotus Workflow Developer Toolkit allows you to build more-robust workflow solutions and tap into other directories, including the IBM Lotus Domino Directory and Lightweight Directory Access Protocol (LDAP). Lotus Workflow and Lotus Domino.Doc are highly compatible, so you can store and manage documents in Lotus Domino.Doc while using Lotus Workflow applications to rapidly deliver documents across your enterprise. This enables your team to edit, review and approve drafts, and delegate and complete assigned tasks faster.

Visual tools and powerful process logic

Lotus Workflow provides an intuitive visual design environment to help managers and developers collaboratively design and review business processes. The flow-chart-style visual interface—and a business object library to store workflow design elements in—helps developers rapidly and cost-effectively create workflow applications.

To ease and improve workflow management, built-in process logic lets you assign, schedule, route and track each step of a job, no matter how complex. You can define business logic, specify participants and their roles and identify relevant data. Define what operations individuals or groups can perform and what data they can access. And you can also use Lotus Workflow to automatically reassign activities to a substitute participant when necessary. Using Lotus Workflow to define and automate workflow activities allows you to capture your organization's best practices and eliminate inefficient steps in business processes, improving productivity and response time. An advanced time-management function warns developers of missed deadlines and alerts managers to unclaimed activities. A parallel routing structure lets your team complete multiple tasks simultaneously.

Lotus Workflow keeps process logic separate from workflow process design so processes can be easily maintained and quickly updated or customized, with little or no programming. Lotus Workflow also separates content and process logic, so developers can easily reuse components to update existing workflow applications or create new applications. With Lotus Workflow, you can standardize workflow processes—such as document-approval routes and names of authorized signers—for reuse, without rewriting or duplicating logic in new applications.

A common release for core Lotus Notes, Domino and the extended Domino product family

Beginning with the 6.5.1 release, IBM is delivering all of the IBM Lotus Domino technology-based collaboration products, including IBM Lotus Workflow software, on a common release schedule, with a common set of operating systems, languages and supported browsers. Delivering products in this manner enables you to install releases of each product with the confidence that they've been tested and are supported to run together. This translates to faster time to value and lower administration costs, because you can run a single version of Lotus Domino that supports all the extended products—reducing your total cost of ownership and speeding your return on investment.

Leading-edge services and solutions—available whenever and wherever you need them

Choosing Lotus software from IBM means you have access to the vast on demand resources available through the global team at IBM Software Services for Lotus (ISSL) and IBM's network of qualified Business Partners. IBM Software Services for Lotus is here to help you quickly maximize the capabilities of and speed return on your Lotus software investments. Through expert consultation, in-depth understanding of Lotus technologies, custom application development, real-world experience and knowledge transfer, IBM Software Services for Lotus and IBM Business Partners can help you turn your IT investments into quantifiable business value. To learn more, visit ibm.com/lotus/services or ibm.com/lotus/partner.

For more information

To learn more about Lotus Workflow 6.5.1 visit:

www.lotus.com/workflow

IBM Lotus Workflow 6.5.1 at a glance

Hardware requirements

- Intel® Pentium® processor
 - 28MB available memory minimum; 256MB or more recommended
-

Software requirements

IBM Lotus Workflow Engine 6.5.1 in a client/server environment

Server platforms

- Microsoft® Windows NT®, Version 4.0 Server,
- Microsoft Windows® 2000 Server and Advanced Server on Lotus Domino 5.0.12 or later version of 5.x.
- Windows 2000 Server and Advanced Server on Lotus Domino 6.0.3 or later version of 6.0.x
- Windows 2000 Server and Advanced Server on Lotus Domino 6.5 or later version of 6.5.x
- Microsoft Windows 2003 Server and Enterprise Edition on Lotus Domino 6.0.3 or later version of 6.0.x
- Windows 2003 Server and Enterprise Edition on Lotus Domino 6.5 or later version of 6.5.x
- IBM AIX®, Version 5.2 on Lotus Domino 6.0.3 or later version of 6.0.x
- AIX, Version 5.2 on Lotus Domino Release 6.5 or later version of 6.5.x
- Red Hat Linux Advanced Server 2.1 on Lotus Domino 6.0.3 or later version of 6.0.x
- Red Hat Linux Advanced Server 2.1 on Lotus Domino 6.5 or later version of 6.5.x
- United Linux, Version 1.0 on Domino 6.5.1 or later version of 6.5.x
- Sun Solaris operating environment, Version 9 on Lotus Domino 6.0.3 or later version of 6.0.x
- Sun Solaris operating environment, Version 9 on Lotus Domino 6.5 or later version of 6.5.x
- IBM @server iSeries™, Version 5.1 and Version 5.2 on Lotus Domino 6.0.3 or later version of 6.0.x
- iSeries, Version 5.1 and Version 5.2 on Lotus Domino 6.5 or later version of 6.5.x
- iSeries, Version 5.3 on Lotus Domino 6.5.1 or later version of 6.5.x
- IBM z/OS®, Version 1.2 on Lotus Domino 6.0.3 or later version of 6.0.x
- z/OS, Version 1.2 on Lotus Domino 6.5 or later version of 6.5.x
- Linux for IBM zSeries® and United Linux, Version 1.0 for IBM S/390® with Service Pack 2 on Lotus Domino 6.0.3 or later version of 6.0.x
- Linux for zSeries and United Linux, Version 1.0 for S/390 with Service Pack 2 on Lotus Domino 6.5 or later version of 6.5.x

Note: For hardware and memory requirements, refer to the system requirements for the IBM Lotus Domino Server.

Notes client software requirements

- Windows XP Professional
 - Windows 2000 Professional
 - Windows NT Workstation
 - Window 98 SE2
 - Lotus Notes 5.0.12 or later version of 5.x.
 - Lotus Notes 6.0.3 or later version of 6.0.x
 - Lotus Notes 6.5 or later version of 6.5.x
-

Browser client requirements

- Microsoft Internet Explorer, Version 6.x or later on Windows 2000 Professional and Windows XP Professional
 - Netscape Communicator, Version 4.7x on Windows
 - Mozilla, Version 1.4.1 with Sun Java™ Runtime Environment (JRE), Version 1.4.2 on Red Hat Linux, Version 9 and Enterprise Linux, Version 3
-

IBM Lotus Workflow Viewer 6.5.1 and IBM Lotus Workflow Architect 6.5.1

- Microsoft Windows NT, Version 4.0
 - Microsoft Windows 2000 Professional
 - Microsoft Windows XP Professional
 - Lotus Notes 5.0.12 or later version of 5.x.
 - Lotus Notes 6.0.3 or later version of 6.0.x
 - Lotus Notes 6.5 or later version of 6.5.x
-

IBM Lotus Workflow 6.5.1 at a glance (continued)

Software requirements

Lotus Workflow Web Viewer 6.5.1

Server platforms

- Windows 2000 Server and Advanced Server and Windows NT, Version 4.0 Server on Lotus Domino 5.0.12 or later version of 5.x.
- Windows 2000 Server and Advanced Server and Windows NT, Version 4.0 Server on Lotus Domino 6.0.3 or later version of 6.0.x
- Windows 2000 Server and Advanced Server and Windows NT, Version 4.0 Server on Lotus Domino 6.5 or later version of 6.5.x
- Red Hat Linux Advance Server 2.1 on Lotus Domino 6.0.3 or later version of 6.0.x
- Red Hat Linux Advance Server 2.1 on Lotus Domino 6.5 or later version of 6.5.x
- United Linux, Version 1.0 on Lotus Domino 6.5.1 or later version of 6.5.x
- AIX, Version 5.2 on Lotus Domino 6.0.3 or later version of 6.0.x
- AIX, Version 5.2 on Lotus Domino 6.5 or later version of 6.5.x
- Sun Solaris operating environment, Version 9 on Lotus Domino 6.0.3 or later version of 6.0.x
- Sun Solaris operating environment, Version 9 on Lotus Domino 6.5 or later version of 6.5.x

Note 1: The Web Viewer is currently not supported on the iSeries or zSeries platforms. Please check the Lotus Workflow website for the latest information on supported platforms at www.lotus.com/home.nsf/welcome/domworkflow

Note 2: For platforms other than Windows platforms, see TechNote 7003217 for the latest installation instructions, and visit the Lotus Workflow Web site for the latest installation information on supported platforms at www.lotus.com/home.nsf/welcome/domworkflow

Language support

English, German, Spanish, French, Italian, Portuguese-Brazilian, Traditional Chinese, Simplified Chinese, Japanese, Korean



© Copyright IBM Corporation 2004

Lotus Software
IBM Software Group
One Rogers Street
Cambridge, MA 02142
U.S.A.

Produced in the United States of America
06-04
All Rights Reserved

AIX, Domino, Domino.Doc, @server, IBM, the IBM logo, iSeries, Lotus, Lotus Notes, Notes, ON(LOGO) DEMAND BUSINESS lockup, OS/400, QuickPlace, Sametime, WebSphere, z/OS and zSeries are trademarks of International Business Machines Corporation in the United States, other countries or both.

Microsoft, Windows and Windows NT are trademarks of Microsoft Corporation in the United States, other countries or both.

Java and all Java-based trademarks and logos are trademarks of Sun Microsystems, Inc. in the United States, other countries or both.

Other company, product and service names may be trademarks or service marks of others.