

# IBM SolutionsConnect 2013

L'IBM TechSoftware nouvelle génération

28, 29 et 30 août  
IBM Client Center Paris



#solconnect13

*Transformez vos opportunités en succès*



# Plateforme System z :

Les dernières nouveautés et solutions pour le  
Cloud, l'analytique et la mobilité

***Patrick KESLER – IBM - Directeur Business Mainframe France  
patrick.kesler@fr.ibm.com***

***François Launay - IBM - Product Manager hardware System z  
flaunay@fr.ibm.com***

# IBM zEnterprise

***Patrick KESLER – IBM - Directeur Business Mainframe France  
29 aout 2013***



# The extended role of the IBM Mainframe, the new zEnterprise

## Data Ready

*Enterprise data repository that integrates operational analytics for accelerated insight in one system*

## Mobile Ready

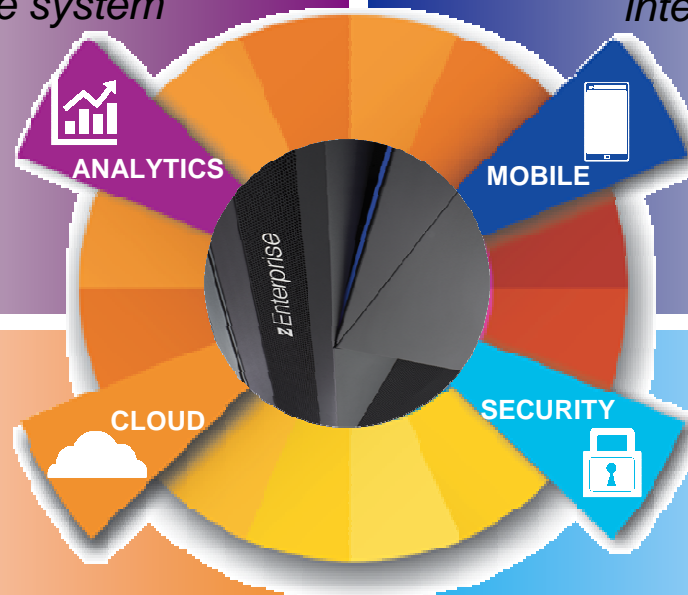
*Connecting backend systems to mobile devices to turn each interaction into an opportunity*

## Cloud Ready

*Highly scalable, agile heterogeneous enterprise private cloud*

## Security Ready

*Trusted security and reliability for critical business processes, applications and data*





## Reports of the death of the mainframe were premature

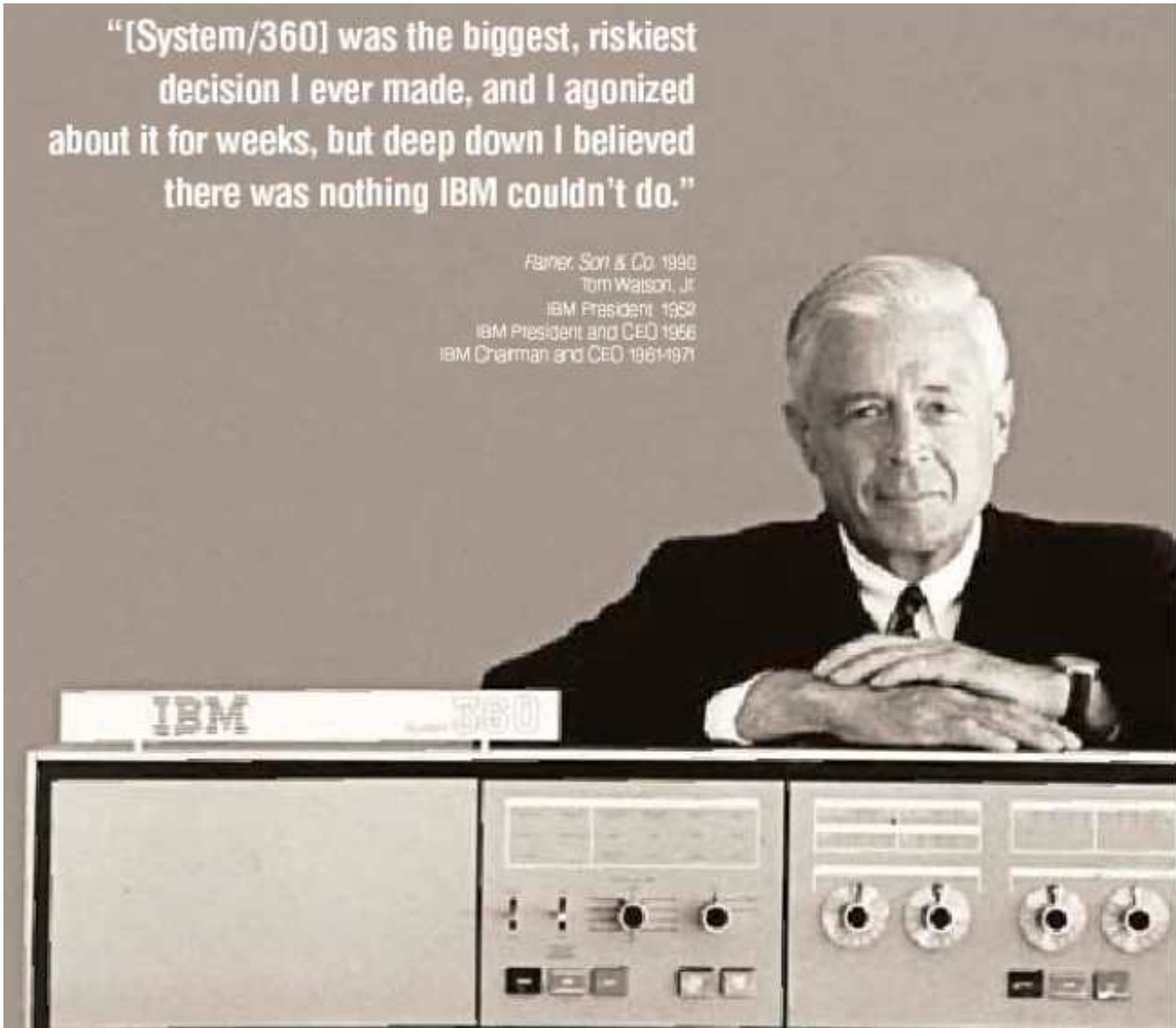
- **“I predict that the last mainframe will be unplugged on March 15, 1996.”**
  - Stewart Alsop, March 1991
- **“It’s clear that corporate customers still like to have centrally controlled, very predictable, reliable computing systems – exactly the kind of systems that IBM specializes in.”**
  - Stewart Alsop, February 2002

Source: IBM Annual Report 2001

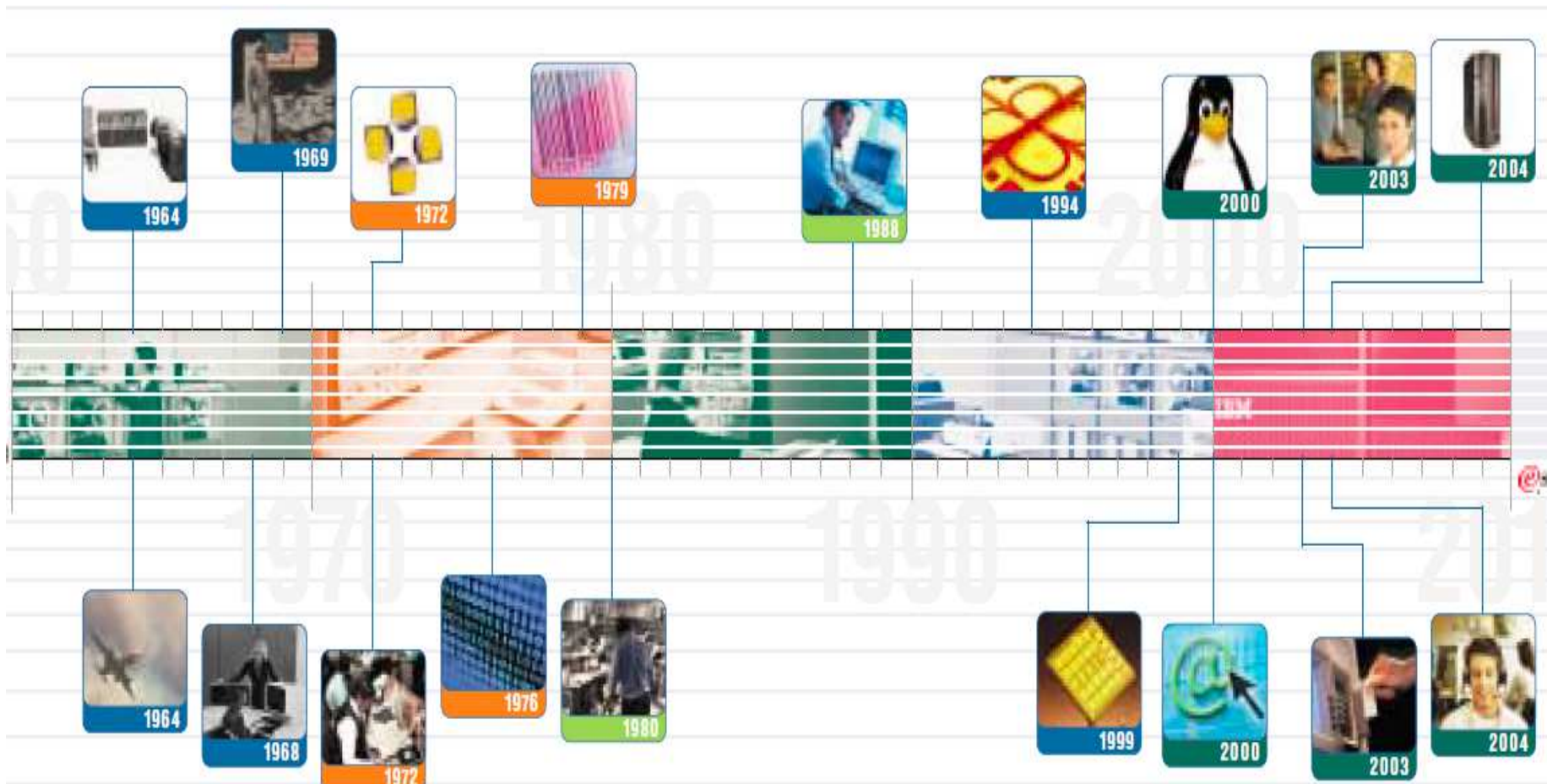


**"[System/360] was the biggest, riskiest decision I ever made, and I agonized about it for weeks, but deep down I believed there was nothing IBM couldn't do."**

*Rainier, Son & Co. 1996  
Tom Watson, Jr.  
IBM President 1952  
IBM President and CEO 1956  
IBM Chairman and CEO 1961-1971*



A black and white photograph of Tom Watson, Jr., an elderly man with white hair, wearing a dark suit, white shirt, and dark tie. He is sitting at a desk with his hands clasped in front of him. The desk is an IBM System/360 console, featuring a control panel with several dials and buttons. A nameplate on the desk reads "IBM" and "360". The background is a plain, light-colored wall.











## How System z is Optimized



# The world is constantly changing ...

**Customer expectations have never been higher**



They are better informed



They operate in a network of peers



They interact through a multitude of devices



They demand personalized service and offerings



***Forward thinking businesses are building competitive advantage through a better customer experience***

# Cloud, analytics and mobile aren't simply remaking computing...

**Cloud**



**Mobile & Social**

**Analytics**



**...they are reshaping the customer engagement model**



**Security**

# Capitalizing on the opportunities brings new challenges

*From stable to unpredictable ...*

*Requiring a flexible system that can ...*



*Volume*

Connected devices will surge to **22 billion** by 2020

**React** and **scale** to handle growth and variability in data and transactions

*Variety*

Digital content will skyrocket to **8 zettabytes** by 2015

**Analyze** data in real-time to deliver actionable insight

*Velocity*

**70 percent** of IT budget is devoted to operations and maintenance

Deliver new and improved services with **speed** and **efficiency** at **lower costs**

*Vulnerability*

The average IT infrastructure is attacked nearly **60,000** times a day

**Protect** critical data, applications and brand reputation with confidence

***Underlying technology choice is more important than ever***

# The extended role of the IBM Mainframe, the new zEnterprise

## Data Ready

*Enterprise data repository that integrates operational analytics for accelerated insight in one system*

## Mobile Ready

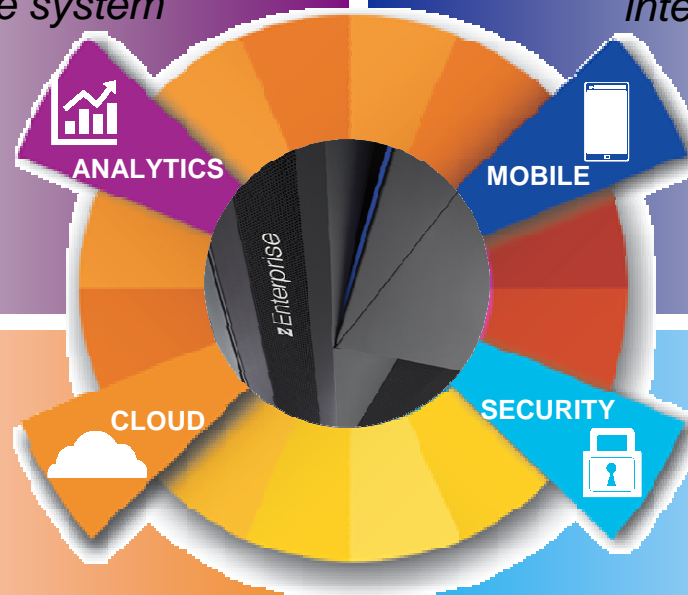
*Connecting backend systems to mobile devices to turn each interaction into an opportunity*

## Cloud Ready

*Highly scalable, agile heterogeneous enterprise private cloud*

## Security Ready

*Trusted security and reliability for critical business processes, applications and data*





# zEnterprise: An Integrated Data & Analytics Engine



## Data Ready:

Enterprise data hub

.....

High-volume secure and reliable transaction processing

.....

Integrated, real-time operational analytics

Up to **30%**

performance improvement in query workloads with DB2® 11 for z/OS vs. DB2 9

**9x**

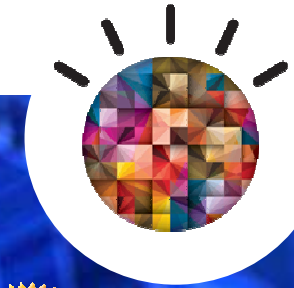
faster, with **10x** better price performance and **14% lower TCA** than the closest competitor

**75+**

IBM DB2 Analytics Accelerators in production

# Data Ready Solutions

## Premier transaction and database management



### z/OS 2.1

Industry-leading operating system enhanced with new data serving, batch, analytics and security capabilities



### IMS™ 13

Premier transaction and database manager with efficiency improvements for Java applications and SQL support



### DB2 11 for z/OS

Improved data sharing performance and efficiency with 20% CPU reduction for OLTP batch and analytics

### CICS TS 5.1

Advanced transaction processing solution enables rapid deployment of new Java workloads



### InfoSphere® Optim™ Family z7.2

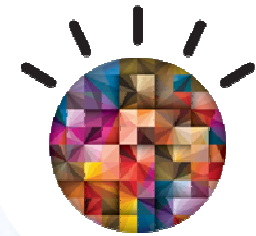
Manage big data from requirements through retirement to promote business-driven governance

By capitalizing on new functionality to **improving the performance and efficiency** of the Kela database processing capabilities, they are now better able to meet the growing demand for **improved social services delivery** for the citizens of Finland



# Data Ready Solutions

*Integrated real-time operational analytics*



## zEnterprise Analytics System 9710

Integrated and ready to use analytics data warehouse solution



## IBM DB2 Analytics Accelerator V3

High performance appliance dramatically speeds response time for complex analytics queries



## IBM Cognos® BI V10.2.1 for z/OS and Linux

Integrate Hadoop data into DB2 as enterprise information hub and provide innovative reports and dashboards



## IBM SPSS® Modeler 14 & SPSS Statistics 22

Provide Enhanced state of the art DB2 real-time transaction scoring and analyze complex relationships with new algorithms

## Enterprise Linux Server for Analytics

Dedicated Linux environment for operational analytics

Up to **30%**

performance improvement in query workloads with DB2® 11 for z/OS vs. DB2 9

**9x**

faster, with **10x** better price performance and **14% lower TCA** than the closest competitor

**75+**

IBM DB2 Analytics Accelerators in production

# zEnterprise: A Holistic Cloud Computing Platform



## Cloud Ready:

Elastic, virtually limitless expansion

.....

Shared everything design

.....

Secure hybrid computing with centralized management

.....

Built on open industry standards

Up to **1,000s**

of virtual servers managed within a single system

**Seconds**

to deploy a new virtual server for rapid delivery of new services

Greater than **50%**

reduction in cost when compared to distributed systems

# Cloud Ready Solutions



**ENHANCED**

## Enterprise Linux Server

Reduces complexity and costs for 1,000s of apps with highly secure partitioning

**ENHANCED**

## Cloud Ready for Linux on System z

Software based cloud services, integrated provisioning, monitoring, and storage management

**NEW**

## IBM UrbanCode Cloud Solutions

Reduce software delivery cycle time with continuous integration and automated deployment of applications

**ENHANCED**

## Tivoli OMEGAMON<sup>®</sup> for z/OS Family

System and network monitoring and performance management across the cloud to minimize or preclude business impacts

**NEW**

## z/VM 6.3



Support for 1TB memory for improved scale; HiperDispatch for improved CPU efficiency; Enabled for OpenStack support

**NEW**

## CSL-WAVE:

Simplifies and automates the set up and management of a System z virtualized environment with drag and drop simplicity. (Announced intent to acquire.)

Up to **1,000s**

of virtual servers managed within a single system

**Seconds**

to deploy a new virtual server for rapid delivery of new services

Greater than **50%**

reduction in cost when compared to distributed systems



# zEnterprise: Sophisticated System for Mobile Computing



## Mobile Ready:

Build and connect to back end systems

Secure and manage with the highest level of security

Extend and transform capabilities to mobile devices

**#1**

in transaction throughput with ability to scale to handle millions of transactions daily

**99.9999%**

availability of data and applications for constant access from mobile devices

**>19,000**

secure transactions per second ready for securing the mobile interaction

# Mobile Ready Solutions



**NEW**

## IBM Worklight®

Common runtime environment and toolset for the development of rich multi-platform apps on zEnterprise

**NEW**

## CICS® TS Feature Pack for Mobile Extensions V1.0

Extending CICS transactions and data connectivity to mobile applications with Native JSON standards support

**RECENTLY UPDATED**

## IBM Endpoint Manager

Secure access to System z data on mobile devices; with integration of LDAP on zEnterprise

**NEW**

## IBM WebSphere® DataPower® Gateway Appliance

Easy-to-use security enhanced integration and IMS integration for mobile devices

**NEW**

## IBM Cognos Mobile

Receive timely, informative and interactive dashboards, reports, metrics and analysis on mobile devices

# #1

in transaction throughput with ability to scale to handle millions of transactions daily

# 99.999%

availability of data and applications for constant access from mobile devices

# >19,000

secure transactions per second ready for securing the mobile interaction

# zEnterprise: A Trusted hub for Enterprise Data Security



## Security Ready:

Ultimate data security protection

.....

Built-in cryptography

.....

Unmatched resiliency and availability

**#1**

EAL 5+ – the highest certification for security in a virtualized environment

**63%**

reduction in Total Cost of Information (TCI) when using zEnterprise security

**74%**

staff savings for security administration personnel on zEnterprise system

# Security Ready Solutions



ENHANCED

## Crypto Express4S

High performance throughput and authentication of secure transactions and enhanced support for industry standards (EMV, PKCS#11)

NEW

## Trusted Key Entry

Migration & set up wizard to simplify initialization of cryptographic tasks

NEW

## Enterprise Key Management Foundation

Protection of sensitive keys with centralized management across mainframe and distributed platforms

NEW

## IBM InfoSphere Guardium®

Reduce costs by automating the entire compliance auditing process in heterogeneous environments

## IBM Security zSecure™ suite V2.1

Automated auditing and monitoring support to enforce policy compliance and threat detection

# #1

EAL 5+ – the highest certification for security in a virtualized environment

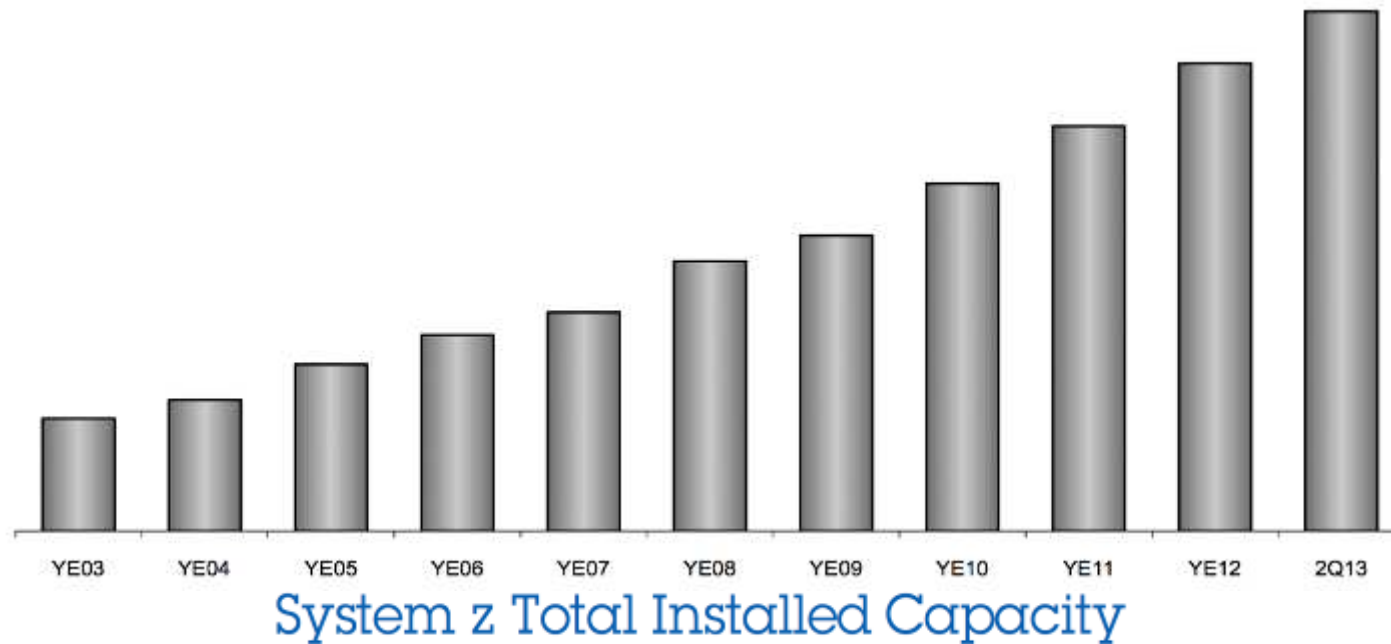
# 63%

reduction in Total Cost of Information (TCI) when using zEnterprise security

# 74%

staff savings for security administration personnel on zEnterprise system

# The Momentum is Growing around zEnterprise...



|   |  |   |  |   |   |
|---|--|---|--|---|---|
| <b>23%</b>                                      | <b>210+</b>  | <b>275+</b>                               | <b>3/4+</b>                            | <b>1,000+</b>   | <b>7,400+</b>   |
| MIPS growth and 10% revenue growth year-to-year | new accounts since 3Q10 zEnterprise® launch, with 1/3+ in growth markets | hybrid computing units shipped since 3Q10 | of Top 100 clients have installed IFLs | schools in 67 countries are part of the IBM Academic Initiative for System z® | ISV apps run on IBM System z; 55 new ISVs added in 1H13 |

[ IFL = Linux-on-z Only Engine ]



## zEnterprise is attracting new clients with differentiated value



WHITE CUBE

*Leading contemporary UK art gallery needed real-time inventory access and continuous availability with expansion efforts*

12 to 1

Consolidation of 12 distributed x86 servers onto a single z114 running Linux



*Chinese law enforcement agency sought a high-performance platform to support critical population management software*

3.5M

Fast access to data on 3.5M residents with centrally managed, scalable solution

## Now we are extending and enhancing the zEnterprise portfolio to bring new value to enterprises of all sizes ...



- New Software and Industry Solutions for Cloud, Analytics, Mobile and Security
- The New IBM zEnterprise BC12 & DS8870 BC Configuration
- The New Enterprise Linux<sup>®</sup> Server
- New Hardware Innovations for zEC12 & zBC12
- New and enhanced zHybrid capabilities
- New Operating Systems releases with z/OS<sup>®</sup> 2.1, z/OSMF 2.1 and z/VM<sup>®</sup> 6.3

*Building a better customer experience for business advantage with zEnterprise*

# AND IT'S JUST BEGINNING

# BUZZ ON Z

Everything on IBM Mainframe System z all over the NET WEEKLY

TOPICS PHOTOS VIDEOS

SHARE SUBSCRIBE

Monday, Aug. 26, 2013 | Next update in 4 days | Archives

## IBM Enterprise2013 - Overview

Shared by  
IBM System z



ibm.com - "Bringing together the System z® Technical University, Power Systems™ Technical University and an Executive Summit into one premier event." Enterprise2013 is ideal for business and IT executives an...

## Client focus: BCBSKS cuts mainframe software costs with IBM - IBM Mainframe Insights

Shared by

## IBM Enterprise2013 - Agenda - System z Technical University

Shared by  
IBM System z

ibm.com - IBM System z delivers a unique hybrid computing model that allows data centers to optimize workload deployment on best fit technologies with a common management infrastructure. The System z Technic...

## IBM Systems Magazine - New System z Compilers Take Business Critical Applications to the Next Level | Mainframe | IBM

FROM THE EDITOR



Patrick Kesler



IBM France Mainframe Business director

### Editor's note

Everyday, everywhere on the Net somebody is tweeting, writing, publishing on the IBM Mainframe System z.

We will look for you after the most relevant information in ENGLISH and update it every MONDAY.

IBM Mainframe System z is key for the IT world and is modernizing everyday to stay on top of any architecture.

Since almost 50 years System z is the most reliable, manageable, available and secure platform.

## PATRICK KESLER sur le net

- TWITTER : KeslerPatrick
- BUZZ ON Z : <http://bit.ly/15gCzZa>



# Plateforme System z :

Les dernières nouveautés et solutions pour le  
Cloud, l'analytique et la mobilité

François Launay

Product Manager hardware System z

[flaunay@fr.ibm.com](mailto:flaunay@fr.ibm.com)

# Innovation to be shared !

2012

● AUG

● DEC

## IBM zEnterprise® EC12

- Performance
- Availability innovations
- Optimized for data serving
- Boost to software

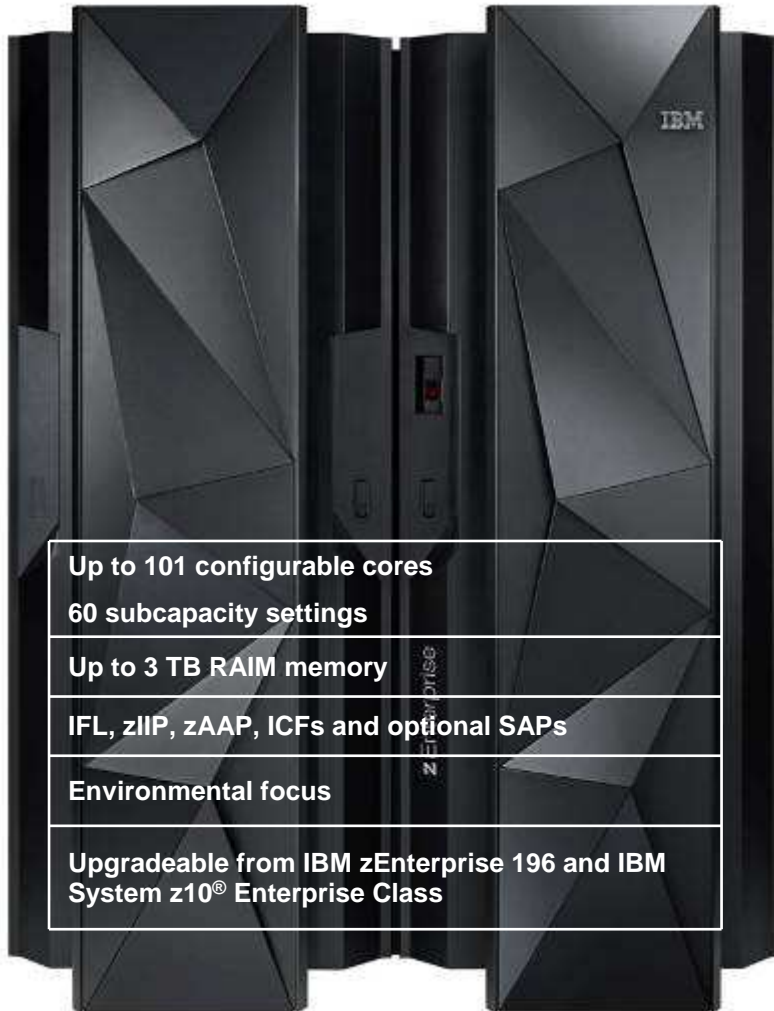


## IBM zEnterprise Unified Resource Manager (zManager) and zEnterprise BladeCenter® Extension (zBX) Mod 003

- Investment protection
- Hosts PS701 and HX5 blades
- Commitment to future of zBX

# zEnterprise EC12 satisfies the most robust enterprise requirements

Announced August 28, 2012



- Up to 101 configurable cores
- 60 subcapacity settings
- Up to 3 TB RAIM memory
- IFL, zIIP, zAAP, ICFs and optional SAPs
- Environmental focus
- Upgradeable from IBM zEnterprise 196 and IBM System z10<sup>®</sup> Enterprise Class

## zEC12

2827, Models: H20, H43, H66, H89, HA1

- **Advanced Technology 5.5 GHz processor chip for performance boost for all workloads**
  - Over **78,000 MIPS** for large scale consolidation
- **Processor chip optimized for software performance**
- **Innovation to drive availability to superior levels**
  - **IBM zAware** offers snap-shot of the current state of your business
  - **FLASH Express and pageable large pages** to drive availability and performance for critical workloads
- **Trusted resilience is a zEnterprise standard**
  - High speed **cryptography integrated as part of the chip**
  - Enhanced functions with new **Crypto Express4S**
  - PR/SM<sup>™</sup> received **EAL5+ certification**

<sup>1</sup>Based on preliminary internal measurements and projections against a z196. Official performance data will be available upon announce and can be obtained online at LSPR (Large Systems Performance Reference) website at: <https://www.ibm.com/servers/resourceink/lib03060.nsf/pages/lspindex>. Actual performance results may vary by customer based on individual workload, configuration and software levels.

# Innovation to be shared !

2012

2013

● AUG

● DEC

● MAR

● JUL



## IBM zEnterprise® EC12

- Performance
- Availability innovations
- Optimized for data serving
- Boost to software



## IBM zEnterprise Unified Resource Manager (zManager) and zEnterprise BladeCenter® Extension (zBX) Mod 003

- Investment protection
- Hosts PS701 and HX5 blades
- Commitment to future of zBX

## System Director

- Enhancements for provisioning and image management on zBX

## Enhancements

- Updates to IBM zAware
- Updates to DataPower® XI50z
- Top exit cabling for zBX
- 2GB page support for z/OS®

## IBM Enterprise BC12

- Secure foundation for Cloud, Mobile & Data



## zBX Model 003 & zManager

- Resource Management
- Availability Monitoring

## zEC12 updates

- Data serving

## z/OS V2.1

- Secure
- Optimized data storage
- Cloud like scale
- New Crypto as a Service
- Workload Optimization built in

## z/VM® 6.3

- New scale opportunities with z/VM support for 1TB of real memory
- HiperDispatch – more efficient utilization of CPU resources

# The game changer: New zBC12 based Enterprise Linux Server

*Attracting new clients with differentiated value*



## Enterprise Linux Server (ELS)

Up to **13** Linux cores running at **4.2GHz**

Deploy up to **40** virtual servers per core or **520** in a single footprint

Secure isolation of Logical Partitions with **highest** level of security certification

Balanced System Design with **496GB** memory

**Pre-Packaged** Linux Server Solution including Hardware, Hypervisor, Maintenance

Enterprise Linux Server for **Analytics** Solution Edition

Support for **Red Hat**, **SUSE** and **OpenStack** Cloud

Hardware starting as low as  
**\$75K USD**

As low as  
**\$1.<sup>00</sup>/day**  
per virtual server

More than **3,000**  
Linux ISVs apps supported

Save up to **55%**  
on TCO over 5 years



# Introducing the new IBM zEnterprise BC12

## Performance

- 36% performance boost per core running at 4.2 GHz
- 58% more capacity for traditional workloads
- 62% more capacity for Linux® workloads
- 2X increase in RAIM memory

## Networking and Hybrid

- Reduced latency for server to server communications with z/OS V2.1 SMC-R and 10GbE RoCE Express
- Resource management defined by business goals and objectives



## Economics

- Same low entry price as the z114
- 27% improvement in P/P for specialty engines
- Compression acceleration (zEDC) for better resource usage
- 20% increase in granularity

## Investment Protection

- Start Small and Grow with Ease
- Upgrade from z10™ BC and z114
- Upgrade into zEC12
- Upgrade zBX Mod 002 to Mod 003

## Security and Availability

- Simplified TKE 7.3 workstation
- z/OS 2.1 Crypto as a service
- IT analytics with IBM zAware to improve availability
- Flash Express helps reduce downtime from application availability lapses

\* US prices, may vary by country

***Increased performance and flexibility in lower cost package extending the latest mainframe technology to organizations of all sizes***

## Increased scale and flexibility provide room for growth

| Model | Total PUs | CPs | IFLs | zAAPs | zIIPs | ICFs | Std. SAPs | Add' I SAPs | Spares | IFP |
|-------|-----------|-----|------|-------|-------|------|-----------|-------------|--------|-----|
| H06   | 9         | 0-6 | 0-6  | 0-4*  | 0-4*  | 0-6  | 2         | 0-2         | 0      | 1   |
| H13   | 18        | 0-6 | 0-13 | 0-7** | 0-7** | 0-13 | 2         | 0-2         | 2      | 1   |

### **zBC12**

*Machine Type: 2828 Models: H06, H13*

- New 2:1 order ratio for zIIP and/or zAAP to CP
- New entry level – 50 MIPS at same z114 entry price
- Full uniprocessor running at over 1064 MIPS with total capacity available over 4900 MIPS

# Increased scale and flexibility provide room for growth

| Model | Total PUs | CPs | IFLs | zAAPs | zIIPs | ICFs | Std. SAPs | Add' I SAPs | Spares | IFP |
|-------|-----------|-----|------|-------|-------|------|-----------|-------------|--------|-----|
| H06   | 9         | 0-6 | 0-6  | 0-4*  | 0-4*  | 0-6  | 2         | 0-2         | 0      | 1   |
| H13   | 18        | 0-6 | 0-13 | 0-7** | 0-7** | 0-13 | 2         | 0-2         | 2      | 1   |

**26 capacity levels  
x 6 CPs  
= 156 settings**

## zBC12

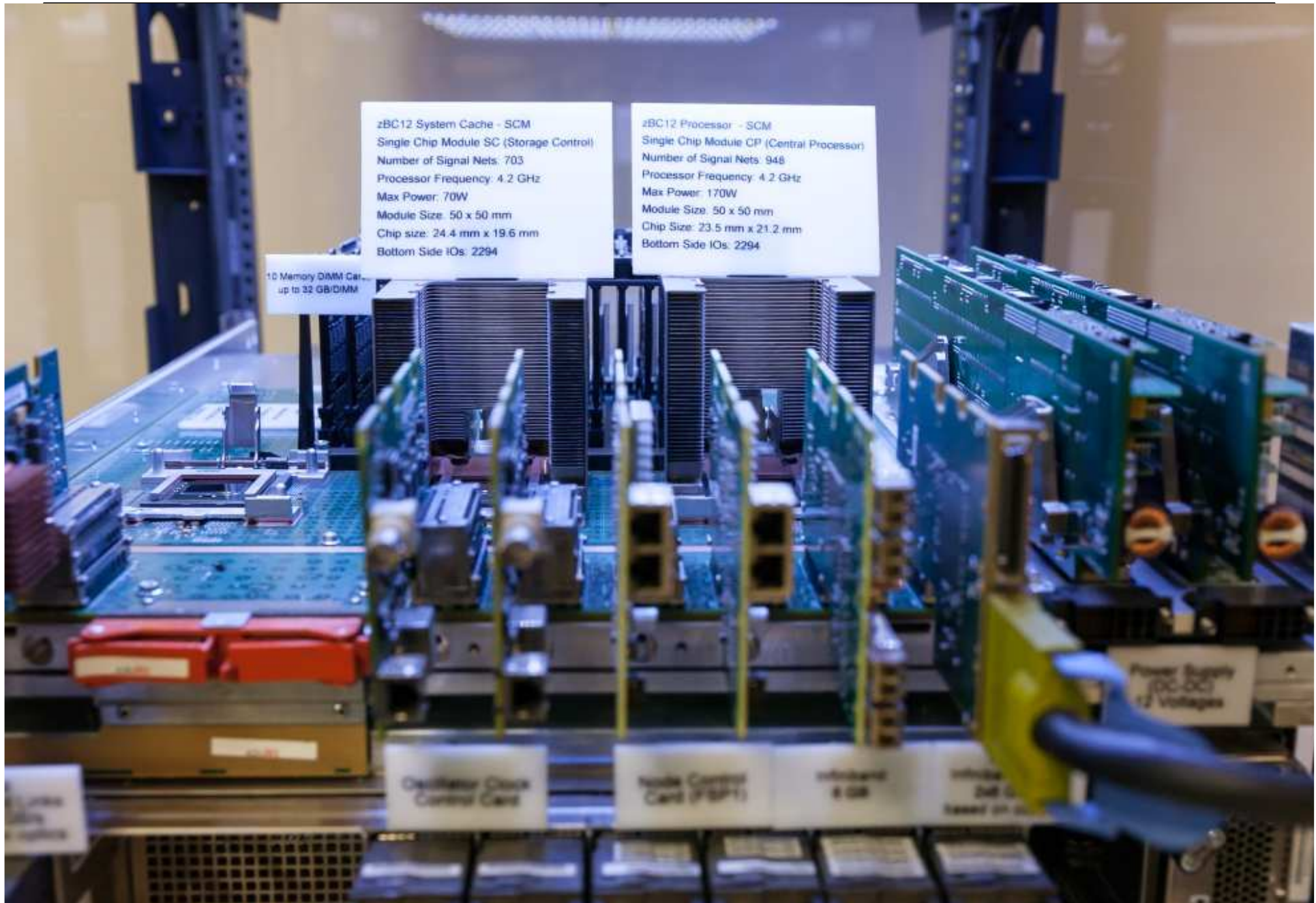
Machine Type: 2828 Models: H06, H13

- New 2:1 order ratio for zIIP and/or zAAP to CP
- New entry level – 50 MIPS at same z114 entry price
- Full uniprocessor running at over 1064 MIPS with total capacity available over 4900 MIPS
- Increased granularity for right sizing -- 26 capacity levels x 6 CPs = 156 settings
- Cloud ready solution ideal for Enterprise Linux Server
  - Model H13 with up to 13 IFL/496 GB/ z/VM 6.3













# New innovations available on zBC12 and zEC12 (GA2)



| NEW  | NEW   | ENHANCED   | ENHANCED   | NEW  |
|--|---|--|--|--|
| <p><b>Data Compression Acceleration</b></p>  | <p><b>High Speed Communication Fabric</b></p>   | <p><b>Flash Technology Exploitation</b></p>  | <p><b>Proactive Systems Health Analytics</b></p>   | <p><b>Hybrid Computing Enhancements</b></p>  |
| <p>Reduce CP consumption, free up storage &amp; speed cross platform data exchange</p> | <p>Optimize server to server networking with reduced latency and lower CPU overhead</p> | <p>Improve availability and performance during critical workload transitions, now with dynamic reconfiguration; Coupling Facility exploitation (SOD)</p> | <p>Increase availability by detecting unusual application or system behaviors for faster problem resolution before they disrupt business</p> | <p>x86 blade resource optimization; New alert &amp; notification for blade virtual servers; Latest x86 OS support; Expanding futures roadmap</p> |
| <p><i>zEDC Express</i></p>   | <p><i>10GbE RoCE Express</i></p>  | <p><i>IBM Flash Express</i></p>  | <p><i>IBM zAware</i></p>   | <p><i>zBX Mod 003; zManager Automate; Ensemble Availability Manager; DataPower Virtual appliance SoD</i></p>                                     |

# Increasing Value with New Technology Innovations



## **NEW! zEDC Express**

Low latency, CPU  
Efficient Data  
Compression

## **NEW! 10GbE RoCE Express with SMC-R**

Low latency, high  
performance network  
communications

## **New! Flash Express**

Improved availability and  
performance during  
critical workload  
transitions

## **New! IBM zAware**

Improve availability  
through smarter problem  
determination

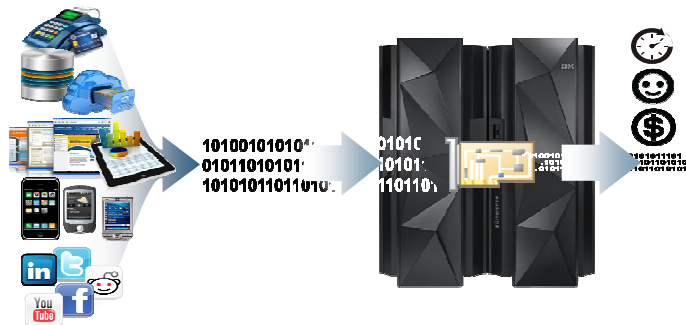
... available on both zEC12 and zBC12

# IBM zEnterprise Data Compression (zEDC)



## What is it?

✓ *A combined software (z/OS V2.1) and hardware (zEDC Express) solution designed to help reduce resource consumption, disk utilization and optimize cross platform exchange of data*



## How is it different

- **Performance:** Efficient alternative for larger files. Reduced CPU overhead for SMF jobs.
- **Efficient:** Optimized algorithms scan text to locate the re-use of phrases and refers back to earlier references
- **Industry Standard:** Compatible with open zlib based compression – widely used across all platforms
- **Economical:** Reduced DASD space requirements and improved effective bandwidth without significant CPU overhead\*\*\*

**15%** reduction in elapsed time for SMF extraction with up to **40%** reduction for CPU time  
 Logger overhead reduced by up to **30%** \*\*

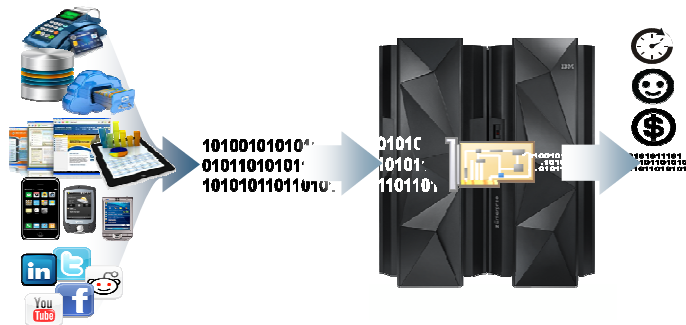
\* When running an SMF extraction/dump against an SMF logstream with records compressed by zEDC  
 \*\* The amount of data sent to an SMF logstream can be reduced by up to 75% using zEDC compression – reducing logger overhead  
 \*\*\* SOD for BSAM/QSAM access methods  
 All statements regarding IBM's future direction and intent are subject to change or withdrawal without notice, and represent goals and objectives only.

# IBM zEnterprise Data Compression (zEDC)



## What is it?

✓ *A combined software (z/OS V2.1) and hardware (zEDC Express) solution designed to help reduce resource consumption, disk utilization and optimize cross platform exchange of data*



## How is it different

- **Performance:** Efficient alternative for larger files. Reduced CPU overhead for SMF jobs.
- **Efficient:** Optimized algorithms scan text to locate the re-use of phrases and refers back to earlier references
- **Industry Standard:** Compatible with open zlib based compression – widely used across all platforms
- **Economical:** Reduced DASD space requirements and improved effective bandwidth without significant CPU overhead\*\*\*

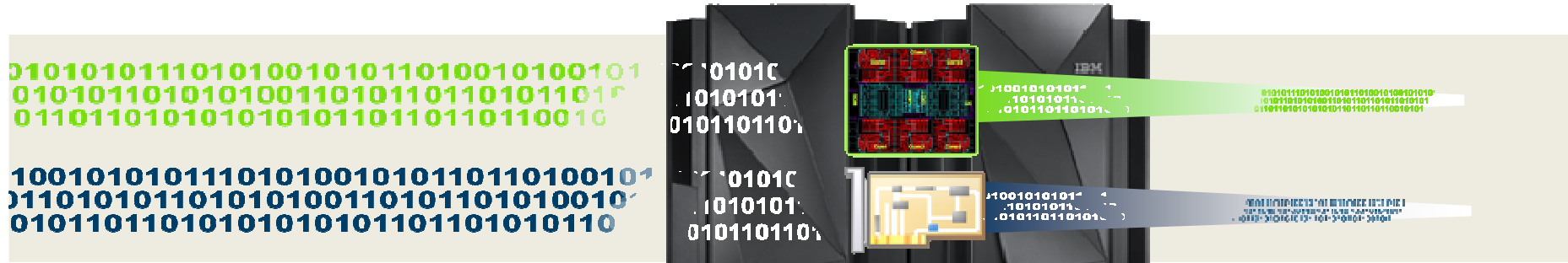
**15%** reduction in elapsed time for SMF extraction with up to **40%** reduction for CPU time  
 Logger overhead reduced by up to **30%** \*\*

\* When running an SMF extraction/dump against an SMF logstream with records compressed by zEDC  
 \*\* The amount of data sent to an SMF logstream can be reduced by up to 75% using zEDC compression – reducing logger overhead  
 \*\*\* SOD for BSAM/QSAM access methods  
 All statements regarding IBM's future direction and intent are subject to change or withdrawal without notice, and represent goals and objectives only.



# zEnterprise Data Compression (zEDC) - can help to reduce CPU and storage

*Every day 2.5 quintillion bytes of data are created*



Compress your data

**4X\***

(efficient system data compression)

Up to **118X** reduction in CPU and up to **24X** throughput improvement when zlib uses zEDC \*\*



## Typical Client Use Cases:

**Significant disk savings** with trivial CPU cost for large BSAM/QSAM sequential files \*\*\*

**More efficiently store audit data** in application logs

**Reduce the amount of data** needed for data migration and backup/restore \*\*

**Transparent acceleration** of Java compressed applications \*\*

**NEW** zEDC Express

**NEW** z/VM 6.3 support for guests\*\*\*

**NEW** z/OS V2.1 zEDC

\* The amount of data sent to an SMF logstream can be reduced by up to 75% using zEDC compression – reducing logger overhead

\*\* These results are based on projections and measurements completed in a controlled environment. Results may vary by customer based on individual workload, configuration and software levels

\*\*\* All statements regarding IBM's future direction and intent are subject to change or withdrawal without notice, and represent goals and objectives only.

# Increasing Value with New Technology Innovations



**NEW! zEDC Express**

Low latency, CPU  
Efficient Data  
Compression

**NEW! 10GbE RoCE  
Express with SMC-R**

Low latency, high  
performance network  
communications

**New! Flash Express**

Improved availability and  
performance during  
critical workload  
transitions

**New! IBM zAware**

Improve availability  
through smarter problem  
determination

... available on both zEC12 and zBC12

# Optimize server to server networking - transparently

*“HiperSockets-likes” capability*

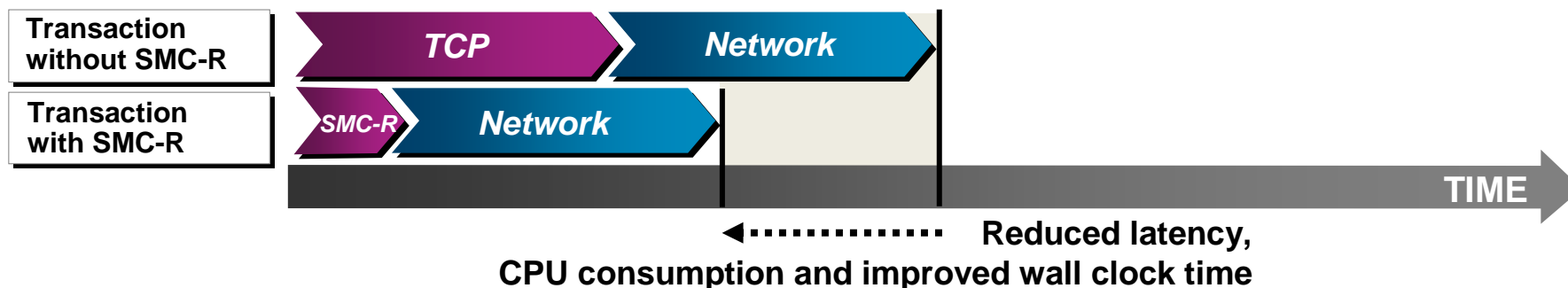


## What is it?

- ✓ **Shared Memory Communications via Remote Direct Memory Access (SMC-R)** is a feature of z/OS V2.1 and will exploit a new **10GbE RoCE Express** feature of zEC12 or zBC12
- ✓ The combination is designed to **reduce latency** and **improve wall clock time**
- ✓ Can be **server-to-server** communication in a multi-server environment or **LPAR-to-LPAR** communication on a single system

## How is it different

- **Industry Standard:** Exploits standard 10 Gb Ethernet fiber optic links
- **Transparent:** z/OS TCP sockets based applications can use seamlessly
- **Secure:** Preserves existing network security model, IP topology, network administrative and operational model
- **Coexist:** Coexists with HiperSockets



# Optimize server to server networking – transparently

Up to **50%** CPU savings for FTP file transfers across z/OS systems versus standard TCP/IP \*\*

Up to **48%** reduction in response time and **10%** CPU savings for a sample CICS workload exploiting IPIC using SMC-R versus TCP/IP \*\*\*

Up to **40%** reduction in overall transaction response time for WAS workload accessing z/OS DB2 \*\*\*\*

Up to **3X** increase in WebSphere MQ messages delivered across z/OS systems \*\*\*\*\*



## Typical Client Use Cases:

Help to reduce both latency and CPU resource consumption over traditional TCP/IP for communications across z/OS systems

Any z/OS TCP sockets based workload can **seamlessly** use SMC-R without requiring any application changes

**NEW** z/OS V2.1 SMC-R

**NEW** z/VM 6.3 support for guests\*

**NEW** 10GbE RoCE Express

\* All statements regarding IBM's future direction and intent are subject to change or withdrawal without notice, and represent goals and objectives only.

\*\* Based on internal IBM benchmarks in a controlled environment using z/OS V2R1 Communications Server FTP client and FTP server, transferring a 1.2GB binary file using SMC-R (10GbE RoCE Express feature) vs standard TCP/IP (10GbE OSA Express4 feature). The actual CPU savings any user will experience may vary.

\*\*\* Based on internal IBM benchmarks using a modeled CICS workload driving a CICS transaction that performs 5 DPL (Distributed Program Link) calls to a CICS region on a remote z/OS system via CICS IP interconnectivity (IPIC), using 32K input/output containers. Response times and CPU savings measured on z/OS system initiating the DPL calls. The actual response times and CPU savings any user will experience will vary.

\*\*\*\* Based on projections and measurements completed in a controlled environment. Results may vary by customer based on individual workload, configuration and software levels.

\*\*\*\*\* Based on internal IBM benchmarks using a modeled WebSphere MQ for z/OS workload driving non-persistent messages across z/OS systems in a request/response pattern. The benchmarks included various data sizes and number of channel pairs. The actual throughput and CPU savings users will experience may vary based on the user workload and configuration.

# Increasing Value with New Technology Innovations



**NEW! zEDC Express**

Low Latency, CPU  
Efficient Data  
Compression

**NEW! 10GbE RoCE  
Express with SMC-R**

Low latency, high  
performance network  
communications

**New! Flash Express**

Improved availability and  
performance during  
critical workload  
transitions

**New! IBM zAware**

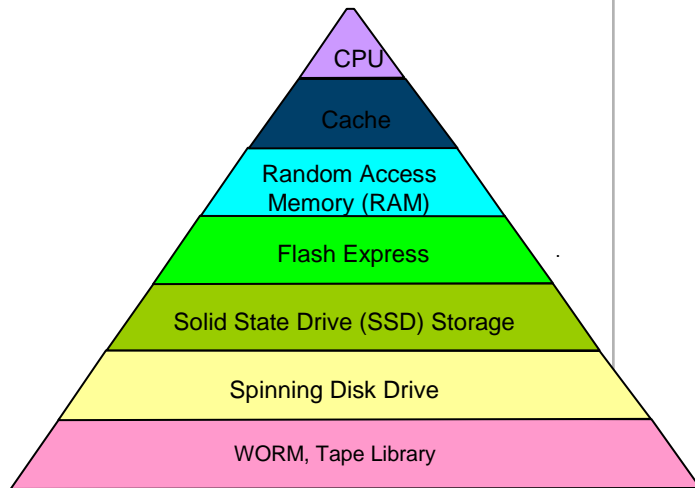
Improve availability  
through smarter problem  
determination

... available on both zEC12 and zBC12

# Flash Express cuts away at availability lapses



Innovative PCI-e storage-class memory  
Enables the use of large 1 MB pageable pages



## *Typical Client Use Cases:*

**Improve availability and performance** during workload transition and spikes

**Faster, less disruptive** diagnostics

**Supported on z/OS  
V1.13  
or Higher \*\***

\* All statements regarding IBM's future direction and intent are subject to change or withdrawal without notice, and represent goals and objectives only

\*\* With the March 2013 RSM Enablement Offering Web deliverable.



# IBM Flash Express

## *Notable Increases in Availability and Performance*

### What's New?

- Dynamic Reconfiguration of Flash Express memory
- In the future, Coupling Facility use of Flash provides a cost effective, resilient solution for overflow of MQ shared queues in Coupling Facility (SOD) \*
- Support for DB2 11 use of Flash planned for 2013, rollback of DB2 10 support via APAR
- Java SDK7 SR3 and middleware exploiters are available

### Proof Points

**37% increase**  
in transaction throughput  
during morning transition

Standalone Dump  
**19% reduction**  
in total elapsed time

SVC dump elapsed time  
**~25% less than**  
with DASD

**28% improvement**  
in DB2 throughput

WAS Day Trader  
**8% performance improvement**

# Increasing Value with New Technology Innovations



**NEW! zEDC Express**

Low Latency, CPU  
Efficient Data  
Compression

**NEW! 10GbE RoCE  
Express with SMC-R**

Low latency, high  
performance network  
communications

**New! Flash Express**

Improved availability and  
performance during  
critical workload  
transitions

**New! IBM zAware**

Improve availability  
through smarter problem  
determination

... available on both zEC12 and zBC12

## IBM zAware

*Improve z/OS Problem determination and time to repair with a self contained firmware solution*

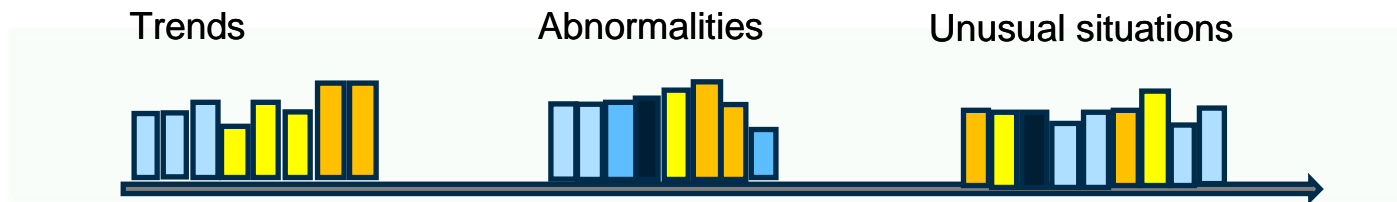
### What is it?

- ✓ IBM zAware is an integrated, self-learning, analytics solution for z/OS that helps identify unusual system behavior in near real time.
- ✓ Helps accelerate problem determination so service is restored faster, improving availability.

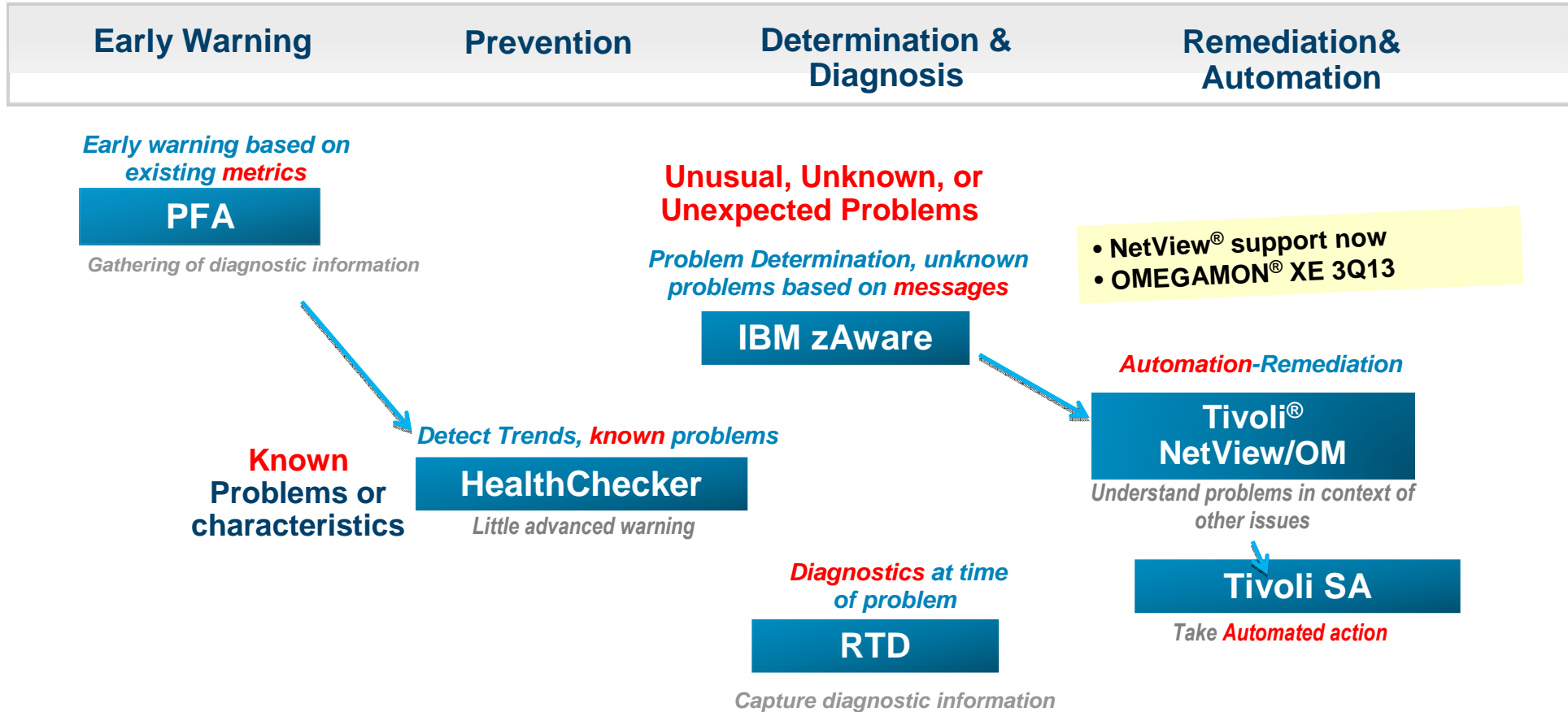
### How is it different?

- **Efficient** : Needs no maintenance or integration, pre integrated “appliance-like” form factor
- **z/OS expertise**: Understands System z message patterns and can detect anomalies applying domain knowledge
- **Automated**: No need to code rules to recognize problems; supports integration with other products
- **Scalable**: can scale to monitor millions of messages
- **Easy to use**: Intuitive web based UI, easy to learn, use

### Reduces time and effort to identify & diagnose problematic messages



# Lessons learned: Each Tool Has a Specific Role to Drive Availability



**These tools provide several functions.** They collectively help companies run operations effectively and achieve higher availability. No one product does it all.

# Problem Determination in 2 clicks instead of Hours

Each ten minute reporting interval (2 minutes sampling) is represented by a bar. Height and color coding signal potential anomalies

The screenshot shows the IBM zAware interface. On the left, a sidebar contains navigation options: Analysis, Notifications, System Status, Administration, Training Sets, and Configuration. The main area displays 'Analysis' with a 'System anomaly scores' graph. A yellow callout box points to the graph with the text: 'Click on yellow bars to drill down on that interval'. The graph shows three systems: MCLICF01.AQFT, HQXC01.AQHO, and HQXC01.AQ93. The second system, HQXC01.AQHO, has a yellow bar indicating an anomaly. Below the graph, a zoom level is set to 1 hr.

The second window shows the 'Interval View for System AQFT'. It displays a table of messages with columns: Anomaly Score, Interval Contribution Score, Message Context, Rules Status, Appearance Count, Time Line, Message ID, Message Example, Rarity Score, Component, and Cluster ID. A yellow callout box highlights a specific message: 'JES Spool full. This would have caused a severe disruption. When spool is full you can't logon, batch stops, a Severity 1 condition.' The highlighted message has an Anomaly Score of 1, an Interval Contribution Score of 19.000, and a Message Example of 'JES2 RESOURCE SHORTAGE OF TGS - 100% UTILIZATION REACHED'.

| Anomaly Score | Interval Contribution Score | Message Context | Rules Status | Appearance Count | Time Line | Message ID | Message Example   | Rarity Score | Component | Cluster ID |
|---------------|-----------------------------|-----------------|--------------|------------------|-----------|------------|---|--------------|-----------|------------|
| 1             | 20.001                      | new             | None         | 19               | [Bar]     | HASFP356   | SPOOL VOLUMES ARE FULL  | 101          | HASP      | -1         |
| 1             | 19.000                      | new             | None         | 18               | [Bar]     | AQST7201   | JES2 SPOOL FULL RECOVERY COMMANDS EXHAUSTED, BACK TO PASS 1                     | 101          | AQF       | -1         |
| 1             | 9.718                       | undclustered    | IMPORTANT    | 17               | [Bar]     | HASFP070   | JES2 RESOURCE SHORTAGE OF TGS - 100% UTILIZATION REACHED                        | 54           | HASP      | -1         |
| 0.999         | 56.183                      | undclustered    | None         | 40               | [Bar]     | HASFP630   | 17.42.59 SDJOBQ,SPOOL=(PE JOB(DHSM)) STATUS=(EXECUTING(AQTS),CLASS=STC,         | 12           | HASP      | -1         |
| 0.999         | 39.606                      | undclustered    | None         | 23               | [Bar]     | HASFP003   | RC=(S2),PO RC=(S2),PO JOBQ - NO SELECTABLE ENTRIES FOUND MATCHING SPECIFICATION | 25           | HASP      | -1         |
| 0.999         | 7.943                       | undclustered    | None         | 3                | [Bar]     | HASFP119   | ZITWMTNTR DELETED - P'DEL OR P'PURGE JECL, RC=4                                 | 64           | HASP      | -1         |
| 0.999         | 7.688                       | undclustered    | None         | 23               | [Bar]     | HASFP000   | SPQ,Q=HA=1 TRANSLATED BY EXIT HASX05C TO  | 29           | HASP      | -1         |

# IBM zAware delivers smarter message monitoring capabilities

*IT analytics to reduce service disruptions*

*Difficult or unusual problems can be found in*

**2 clicks**

*not hours*

**Ultimate in Resiliency**



## Typical Client Use Cases:

Diagnose complex problems **quickly** and restore service **faster**

**Accelerate problem determination** across IT functions

Real-time, self-learning solution accurately represents your environment – **automatically**



**Customized analysis, scoring**



**Supports long distances 3500km**

**Supported on z/OS V1.13 or higher**



# Flexible connectivity

*Improving bandwidth, granularity and options for connections*



## Clustering for availability

- HCA-3 InfiniBand® Coupling Links  
–1x and 12x
- ISC-3 (peer mode only) <sup>1</sup>
- STP

## Controlled and simplified management

- IBM zAware partition managed from Hardware Management Console (HMC)
- Central management of heterogeneous resources with zManager
- Connectivity of zBX for Hybrid Computing

## Efficient data access

- NEW** ▪ **zEDC Express**
- Flash Express
- FICON Express8S
- Carry forward only - FICON Express8<sup>1</sup>, FICON Express4S<sup>1</sup>, FICON Express4<sup>1</sup>

## Linking up to Speed Up

- NEW** ▪ **10GbE RoCE Express**
- NEW** ▪ **OSA-Express5S**
- OSA-Express4S
- OSA Express3<sup>1</sup>
- 10 GbE for connecting a IBM PureSystems™

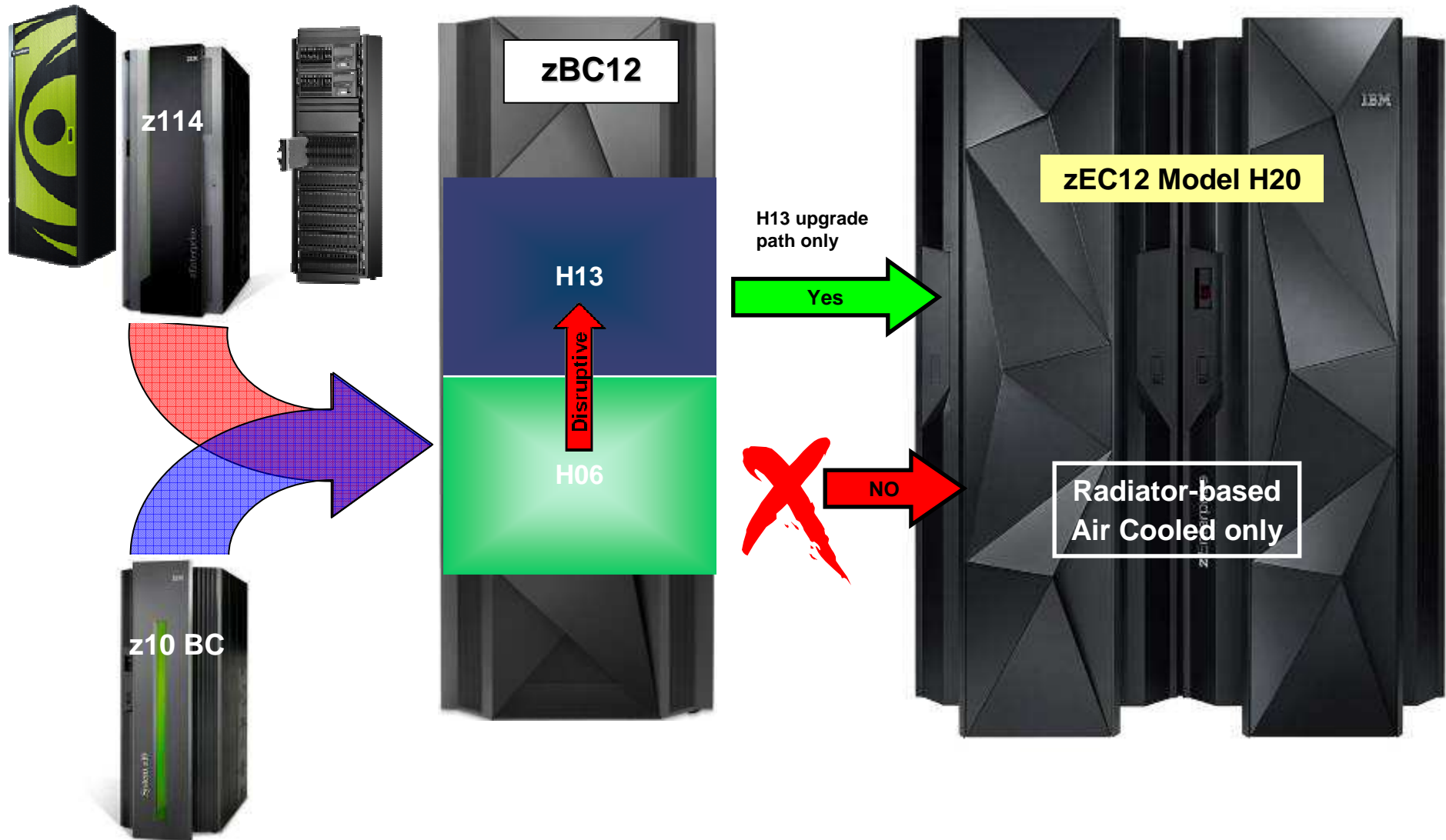
Note: No ESCON support on zEC12 and zBC12

<sup>1</sup> Carry forward only

\* Green indicates new for zEC12

**Plus – High Performance FICON for System z (zHPF) is a performance and RAS enhancement designed to help reduce FICON channel overhead**

# zBC12 Upgrade paths



# Advantages of building your Private Cloud on IBM zEnterprise

## Increased Productivity



- Advanced workload management that provisions resources on the fly
- U.S. Bank reduced provisioning time from 45 days to 20 minutes

## Higher Utilization, Scalability



- Up to 100% CPU utilization
- “Shared everything” architecture
- Manage up to 100,000 virtual servers

## More Efficient Data Center



- Up to 80% less energy than existing distributed servers
- Less floor space
- Fewer parts to manage

## Greater Reliability, Availability, Security

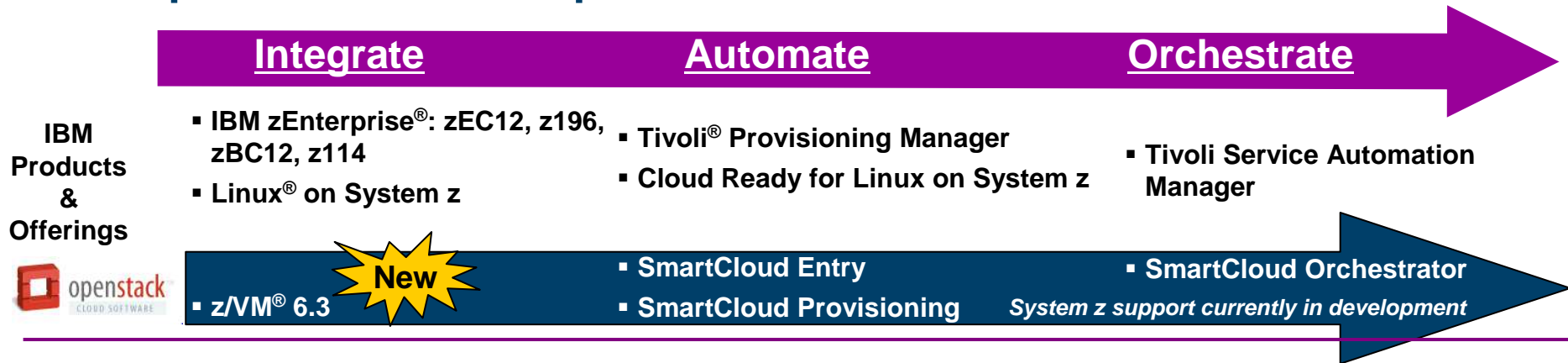


- Built-in hardware redundancy
- Decades of RAS innovation
- Capacity and Backup on Demand
- Highest security rating EAL5+



*The City and County of Honolulu implemented a cloud environment that **reduced database licensing costs by 68 percent and reduced time to deploy applications from one week to a few hours***

# zEnterprise Delivers an Open Cloud infrastructure



## z/VM 6.3 - Smarter Computing with Efficiency at Scale

### **Improved economies of scale with z/VM Support for 1TB of Real Memory**

- **Better performance** for large virtual machines
  - 4x increase in memory scalability while continuing to maintain nearly 100% resource utilization
- **Reduce LPAR sprawl** for additional horizontal scalability
  - up to 4x more virtual machines in a single LPAR depending on workload characteristics
- **Reduced administrative expense** for management of a smaller number of large capacity z/VM host servers

*Higher server consolidation ratio with support for more virtual servers than any other platform in a single footprint*

### **Ready for Cloud Deployments**

- **Integrated OpenStack support** to allow customers to set up private cloud deployments using SmartCloud Technology

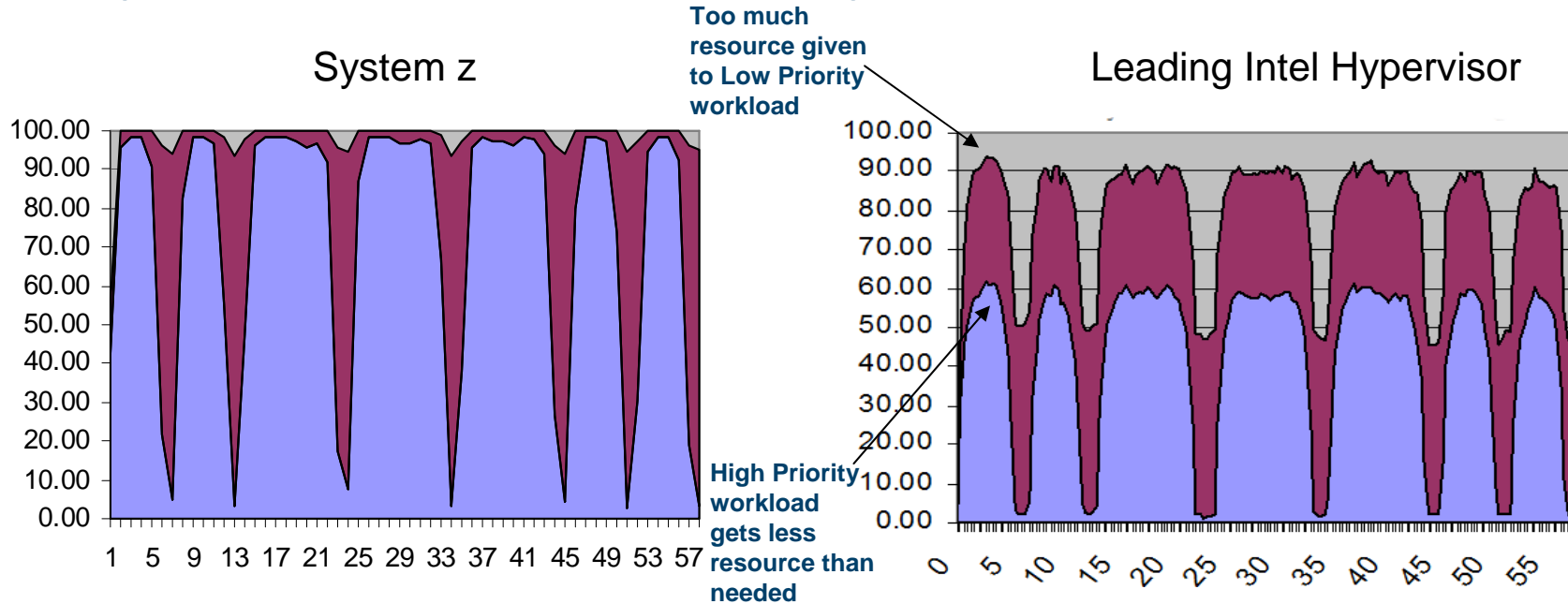
*Improving workload deployment for Linux on System z*



Learn More: [www.vm.ibm.com](http://www.vm.ibm.com)



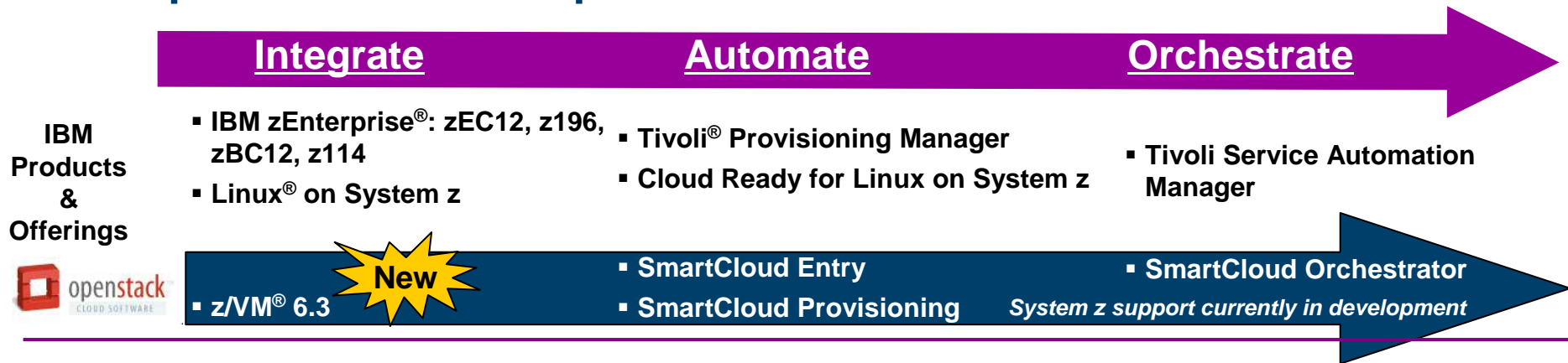
# System z Virtualization Enables Mixing Of High And Low Priority Workloads Without Penalty



- Priority Workload
  - ▶ No throughput reduction
  - ▶ No response time increase
- Low Priority Workload
  - ▶ Soaks up remaining CPU minutes
- Unused CPU minutes 1.9%

- Priority Workload
  - ▶ 31% throughput reduction
  - ▶ 45% response time increase
- Low Priority Workload
  - ▶ Soaks up more CPU minutes
- Unused CPU minutes 21.9%

# zEnterprise Delivers an Open Cloud infrastructure



**ISV Solutions**

**CSL Wave**

- Provided by **CSL International**
- Hypervisor Manager
- Cross marketing agreement to market and promote product

**zPRO**

- Provided by **Velocity Software**
- Add-on feature to Velocity's zVPS product that provides performance management
- Provides golden image creation, cloning, and operational controls

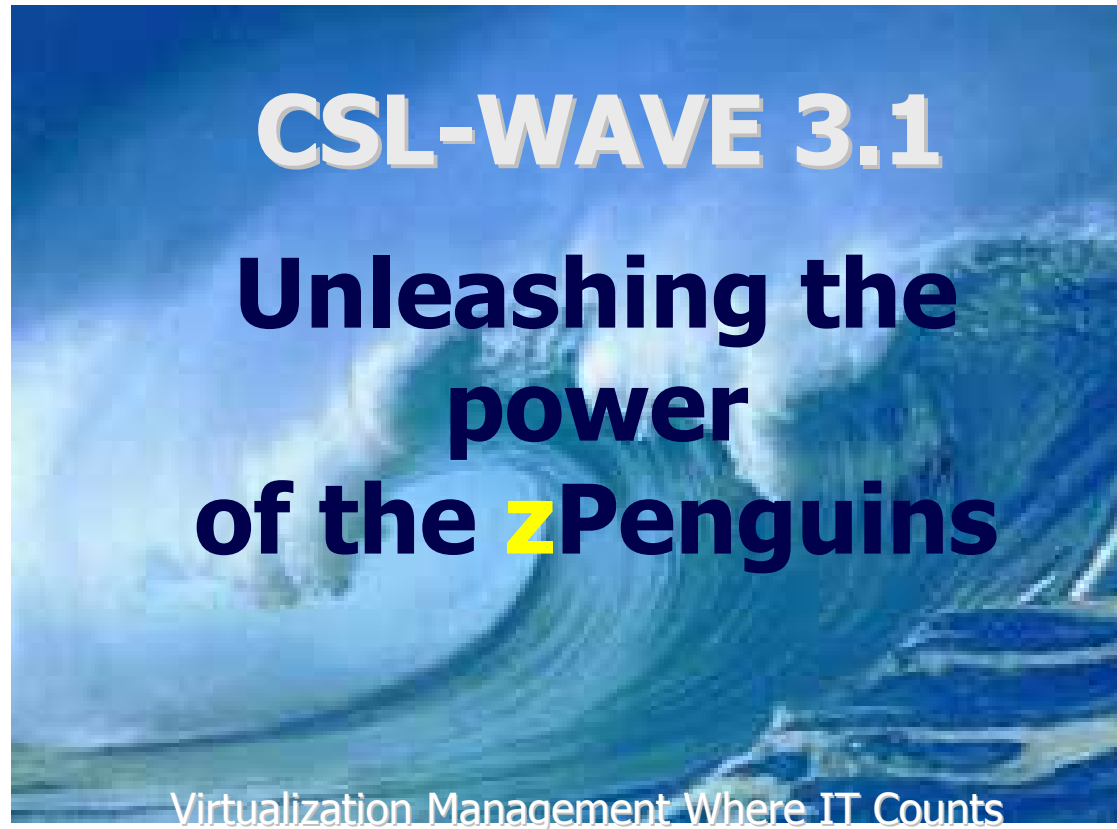
**APPLogic**

- Provided by **Computer Associates**
- Manages both distributed and z/VM environments.

**MOAB**

- Provided by **Adaptive Computing**
- Provides a policy based cloud management based on xCAT

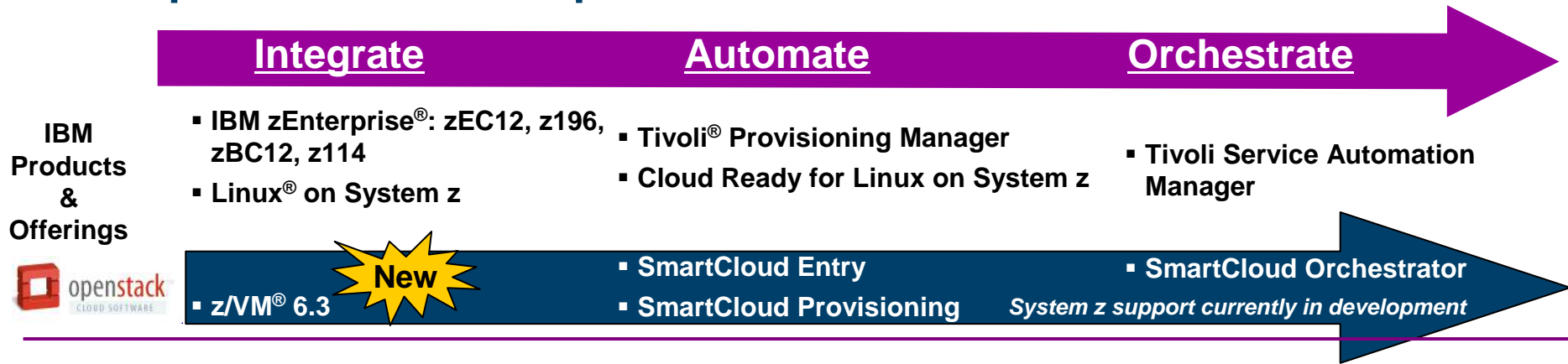
## Cloud: CSL-WAVE on IBM zEnterprise



**CSL-WAVE = All z POWER !!!**

**(Without z Learning Curve...)**

# zEnterprise Delivers an Open Cloud infrastructure



**ISV Solutions**

**CSL Wave**

- Provided by **CSL International**
- Hypervisor Manager
- Cross marketing agreement to market and promote product

**zPRO**

- Provided by **Velocity Software**
- Add-on feature to Velocity's zVPS product that provides performance management
- Provides golden image creation, cloning, and operational controls

**APPLogic**

- Provided by **Computer Associates**
- Manages both distributed and z/VM environments.

**MOAB**

- Provided by **Adaptive Computing**
- Provides a policy based cloud management based on xCAT

**Open Source Options**

**xCAT**

- Extre**me **C**loud **A**dministration **T**ool
- Now supported on z/VM through services offering (GTS)

**OpenStack®**

- Being enabled for z/VM first and eventually zManager
- Being used as a code base for SCE / SCP / SCO

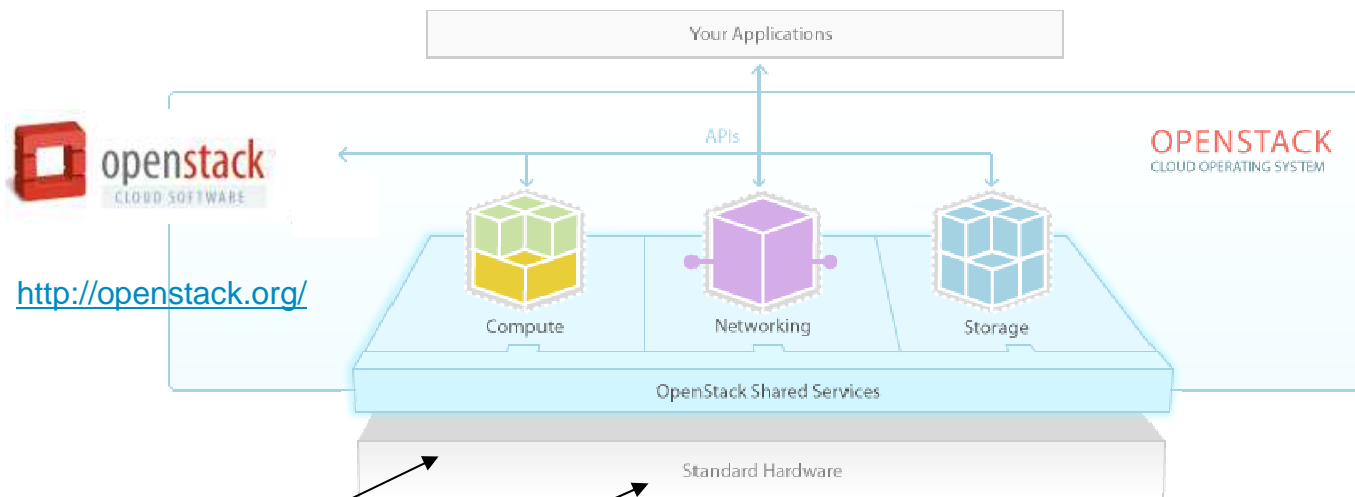
# OpenStack Strategy

Self-Service  
Services Catalog

## Cloud Management Application

(including SmartCloud technologies)

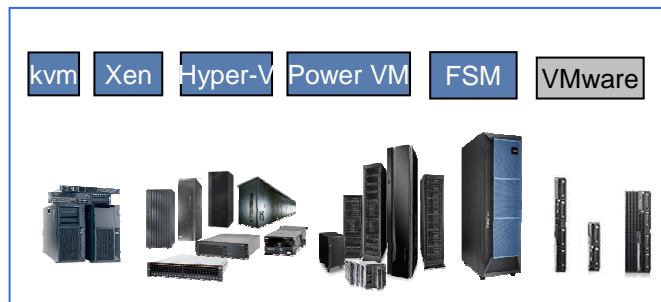
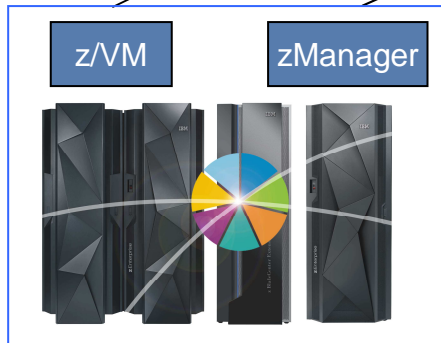
Multi-Tenant  
Billing and Charge-back



**openstack**  
CLOUD SOFTWARE  
<http://openstack.org/>

**Compute (Nova)**  
**Storage (Cinder)**  
**Network (Quantum)**  
Provision and manage virtual resources such as servers, networking, and storage.

**Direct Hypervisor Integration**  
System z support (z/VM followed by zManager) being added to OpenStack, in the same manner as other hypervisors

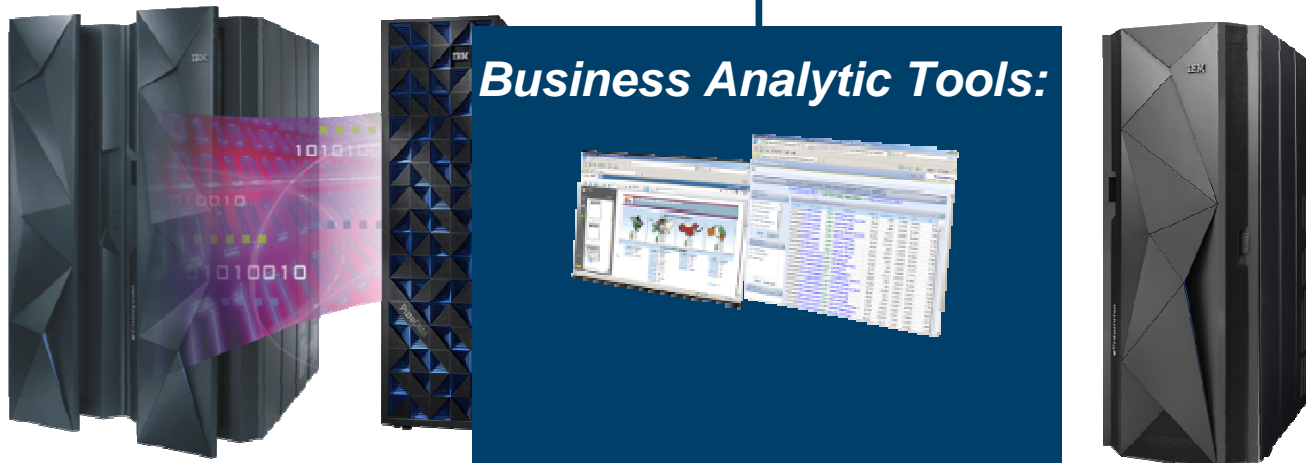


# System z: The INFORMATION HUB of the Enterprise

## *Infrastructure Matters...*

**IBM zEnterprise® Analytics  
System 9700/9710**

**Enterprise Linux® Server  
for Analytics**



### **Business Analytic Tools:**

- **Both have Linux LPAR**
- **Cognos®, SPSS®**
- **Dashboards, Scorecards**

- z/OS® based analytics offering:
  - DB2® for z/OS LPAR for data
  - Accelerator for query performance
  - z/OS QoS: Security, Availability

- Linux LPAR for Analytic workloads
  - Distributed database
  - Linux, z/VM® QoS
  - Scalability, Virtualization



## IBM DB2 Analytics Accelerator V3.1 - Highlights

### *Building on the Core Values*

#### **Fast**

Complex queries run up to 2000x faster while retaining single record lookup speed

#### **Cost Saving**

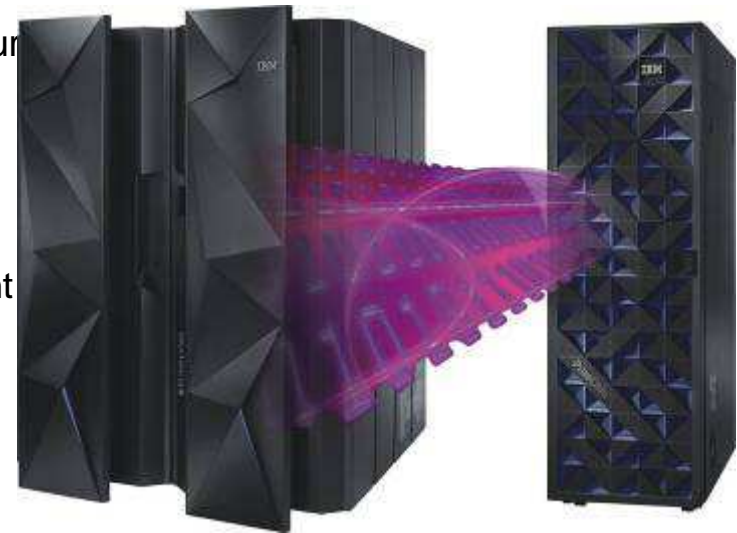
Eliminate costly query tuning while offloading complex query processing

#### **Appliance**

No applications to change, just plug it in, load the data, and gain the value

### *Reducing the Cost of High Speed Analytics*

- **Choice of historical data location – High Performance Storage Saver**
  - Reduces host data warehouse storage usage by over 95%
  - Significantly reduces cost of host storage resources and administration
- **Real time analytics – Incremental Update**
  - Data changes are propagated for high-speed use as they occur
  - Current information is available for right-time decisions
  - Extends the accelerator use to reporting on operational data
- **Faster data refresh – Unload Lite**
  - Data available for analytics faster
    - Refresh of tables or partitions is much faster and more efficient
    - More optimized version of unloading data from DB2
- **New capacity – Full range of Netezza® models supported**
  - Now expandable to 960 cores and 1.28 petabytes
- **New queries**
  - More queries eligible for acceleration



# zEnterprise System delivers a security ready infrastructure



## Intrinsic platform security and privacy

- Cryptography built into processor chip and Crypto Express4S
- Secure your critical information assets (or data) throughout their life cycle
- Simplified setup and management with **new TKE 7.3**

## Spanning multiple industries

- **Enhanced** digital signature cryptography (PKCS#11) to protect data
- Payment card industry solutions with EMV support for credit and debit cards

## Leveraging operating system security

- Qualities needed by enterprises adopting cloud application architectures
- Wide range of cryptographic primitives exploited by operating system and middleware to help secure and accelerate workloads

## System z exclusive cryptography

- **z/OS V2.1 Crypto as a service**
- Blends the speed of processor based crypto with the security of the Crypto Express coprocessor

## Total isolation of workloads and data

- EAL5+ means the highest levels of protection on commercial server for secure isolation of LPARs
- EAL4+ for z/OS and z/VM

\* **Green indicates new for zEC12**

***New z/OS V2.1 ready to protect data, reduce risk and strengthen customer trust***

## Why select zEnterprise to protect your business

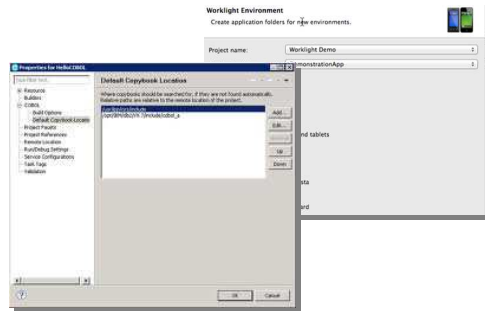


- **Highest security rating** for commercially available servers<sup>1</sup>
- System z has a large number of cloud users with **98%** fewer cloud incursions than other platforms<sup>2</sup>
- **52%** lower security administrative costs<sup>3</sup>
- Total Cost of Information can be reduced as much as **63%** over other offerings<sup>4</sup>
- Savings of up to **70%** of audit and compliance overhead<sup>5</sup>
- Up to **74%** lower staffing level requirements<sup>6</sup>
- **Helps identify fraud risks in real time** and help stops them before they happen
- Enables a **reduction of risk** and **simplification of governance** and compliance
- IBM System z<sup>®</sup> has secured systems for over **40 years**



1. Based on Common Criteria Evaluation Assurance Level 5+ security classification. <http://www-03.ibm.com/press/us/en/pressrelease/38653.wss>  
2. Analyst Paper Solitaire Interglobal Tracked, Hacked and Attacked 2013  
3. Source: IBM Study with external customers. Results may vary.  
4. Analyst Paper Solitaire Interglobal Tracked, Hacked and Attacked 2013  
5. Based on a European Insurance Co's input to IBM BVA using IBM zSecure  
6 Analyst Paper: Solitaire Interglobal Tracked, Hacked and Attacked 2013

# Mobile and cloud with the zEnterprise



## System z applications

Core CICS, IMS, DB2 and other applications and databases cloud and mobile ready



## Infrastructure

Cloud orchestration, provisioning and automation with Tivoli® solutions



## Mobile Devices

developed for the Cloud through web-based shared apps using Worklight

## Why System z and mobile?

- ✓ System z is leader in transaction processing with the ability to handle volumes of critical data
- ✓ System z secures the data for mobile processing from mainframe to mobile device
- ✓ System z is the perfect environment for developing a mobile, cloud, and analytics integrated solution



**System z**

***A sophisticated platform for mobile computing***

# Extending the mainframe with new capabilities



An Integrated  
**Data & Analytics**  
Engine



Efficient, Agile  
**Cloud Computing**  
Foundation



Sophisticated  
platform for  
**Mobile Computing**



Ultimate in  
**Trusted Security**  
& Resiliency



## Extending the mainframe with new capabilities



- **Energize your applications**  
*through integration, improved performance and networking innovations*
- **Save money**  
*by rightsizing without compromise, consolidation opportunities broadened and compression acceleration*
- **Secure it all**  
*with confidence on a trusted and resilient infrastructure*



An Integrated  
**Data & Analytics**  
Engine



Efficient, Agile  
**Cloud Computing**  
Foundation



Sophisticated  
platform for  
**Mobile Computing**



Ultimate in  
**Trusted Security**  
& **Resiliency**



**Merci de votre attention**

## Trademarks

The following are trademarks of the International Business Machines Corporation in the United States and/or other countries.

|                |             |              |
|----------------|-------------|--------------|
| IBM*           | Genelco*    | WebSphere*   |
| IBM (logo)*    | Guardium*   | z/OS*        |
| ibm.com*       | IMS         | z/VM*        |
| BladeCenter*   | InfoSphere* | z/VSE*       |
| CICS Explorer* | OMEGAMON*   | zEnterprise* |
| CICS*          | Optim       | zSecure      |
| Cognos*        | SPSS*       |              |
| DataPower*     | System z*   |              |

\* Registered trademarks of IBM Corporation

The following are trademarks or registered trademarks of other companies.

Adobe, the Adobe logo, PostScript, and the PostScript logo are either registered trademarks or trademarks of Adobe Systems Incorporated in the United States, and/or other countries.

Cell Broadband Engine is a trademark of Sony Computer Entertainment, Inc. in the United States, other countries, or both and is used under license therefrom.

Intel, Intel logo, Intel Inside, Intel Inside logo, Intel Centrino, Intel Centrino logo, Celeron, Intel Xeon, Intel SpeedStep, Itanium, and Pentium are trademarks or registered trademarks of Intel Corporation or its subsidiaries in the United States and other countries.

IT Infrastructure Library is a registered trademark of the Central Computer and Telecommunications Agency which is now part of the Office of Government Commerce.

ITIL is a registered trademark, and a registered community trademark of the Office of Government Commerce, and is registered in the U.S. Patent and Trademark Office.

Java and all Java based trademarks and logos are trademarks or registered trademarks of Oracle and/or its affiliates.

Linear Tape-Open, LTO, the LTO Logo, Ultrium, and the Ultrium logo are trademarks of HP, IBM Corp. and Quantum in the U.S. and

Linux is a registered trademark of Linus Torvalds in the United States, other countries, or both.

Microsoft, Windows, Windows NT, and the Windows logo are trademarks of Microsoft Corporation in the United States, other countries, or both.

OpenStack is a trademark of OpenStack LLC. The OpenStack trademark policy is available on the [OpenStack website](#).

TEALEAF is a registered trademark of Tealeaf, an IBM Company.

Windows Server and the Windows logo are trademarks of the Microsoft group of countries.

Worklight is a trademark or registered trademark of Worklight, an IBM Company.

UNIX is a registered trademark of The Open Group in the United States and other countries.

\* Other product and service names might be trademarks of IBM or other companies.

### Notes:

Performance is in Internal Throughput Rate (ITR) ratio based on measurements and projections using standard IBM benchmarks in a controlled environment. The actual throughput that any user will experience will vary depending upon considerations such as the amount of multiprogramming in the user's job stream, the I/O configuration, the storage configuration, and the workload processed. Therefore, no assurance can be given that an individual user will achieve throughput improvements equivalent to the performance ratios stated here.

IBM hardware products are manufactured from new parts, or new and serviceable used parts. Regardless, our warranty terms apply.

All customer examples cited or described in this presentation are presented as illustrations of the manner in which some customers have used IBM products and the results they may have achieved. Actual environmental costs and performance characteristics will vary depending on individual customer configurations and conditions.

This publication was produced in the United States. IBM may not offer the products, services or features discussed in this document in other countries, and the information may be subject to change without notice. Consult your local IBM business contact for information on the product or services available in your area.

All statements regarding IBM's future direction and intent are subject to change or withdrawal without notice, and represent goals and objectives only.

Information about non-IBM products is obtained from the manufacturers of those products or their published announcements. IBM has not tested those products and cannot confirm the performance, compatibility, or any other claims related to non-IBM products. Questions on the capabilities of non-IBM products should be addressed to the suppliers of those products.

Prices subject to change without notice. Contact your IBM representative or Business Partner for the most current pricing in your geography.

This information provides only general descriptions of the types and portions of workloads that are eligible for execution on Specialty Engines (e.g. zIIPs, zAAPs, and IFLs) ("SEs"). IBM authorizes customers to use IBM SE only to execute the processing of Eligible Workloads of specific Programs expressly authorized by IBM as specified in the "Authorized Use Table for IBM Machines" provided at [www.ibm.com/systems/support/machine\\_warranties/machine\\_code/aut.html](http://www.ibm.com/systems/support/machine_warranties/machine_code/aut.html) ("AUT"). No other workload processing is authorized for execution on an SE. IBM offers SE at a lower price than General Processors/Central Processors because customers are authorized to use SEs only to process certain types and/or amounts of workloads as specified by IBM in the AUT.