

IBM SolutionsConnect 2013

L'IBM TechSoftware nouvelle génération

28, 29 et 30 août
IBM Client Center Paris



#solconnect13

Transformez vos opportunités en succès



IBM SolutionsConnect 2013

L'IBM TechSoftware nouvelle génération

Le Cloud selon CICS TS V5.1, épisode 2 : des plates-formes

Steve Wallin

CICS Strategy and Design Manager

Service Agility, development scenario...

FASTER

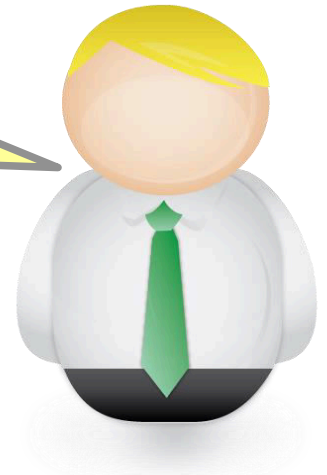


"Hey Simon, I need to test my new version of the payroll **application**."

"Sure Abigail, you should get the latest payroll test **platform** from the repository, I'll send you a link."

"Thanks, I'll **deploy my app** onto that platform on the development plex later today."

"That should be fine, just check with Oliver that the **policies** on the plex are going to be OK for your app's changes."



SIMPLER

Once upon a time things were simple

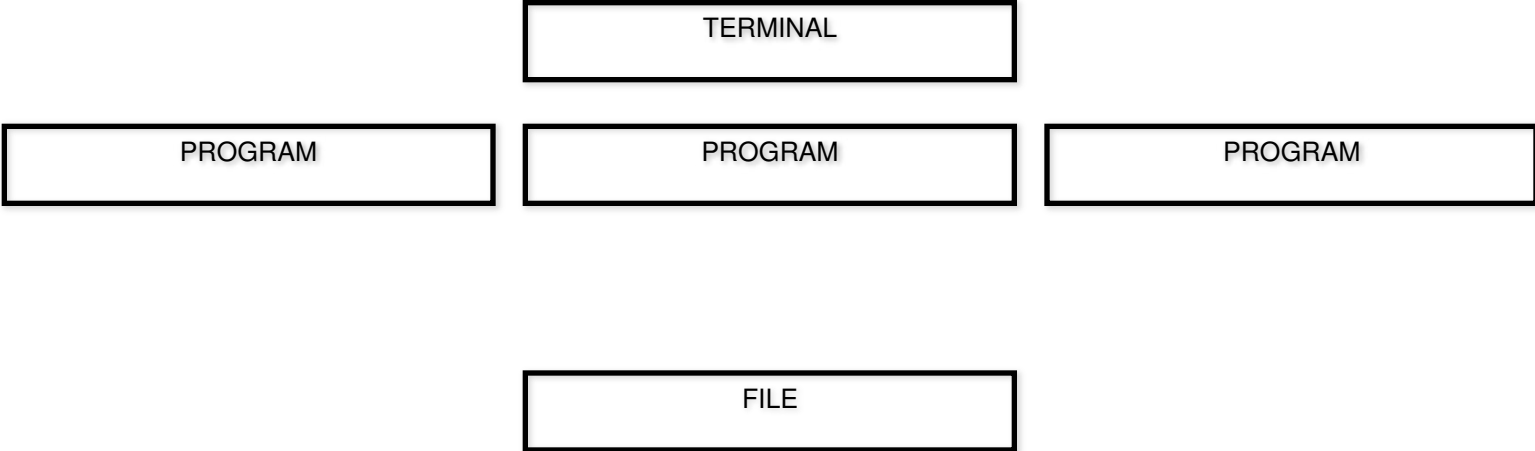
Once upon a time things were simple



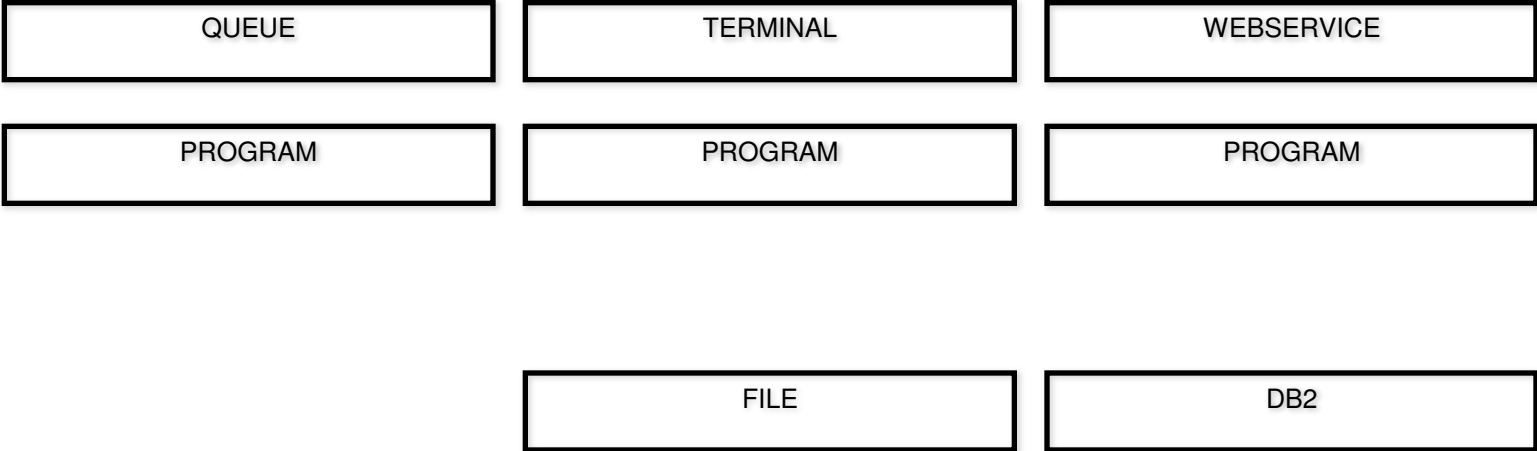
Then we had to scale



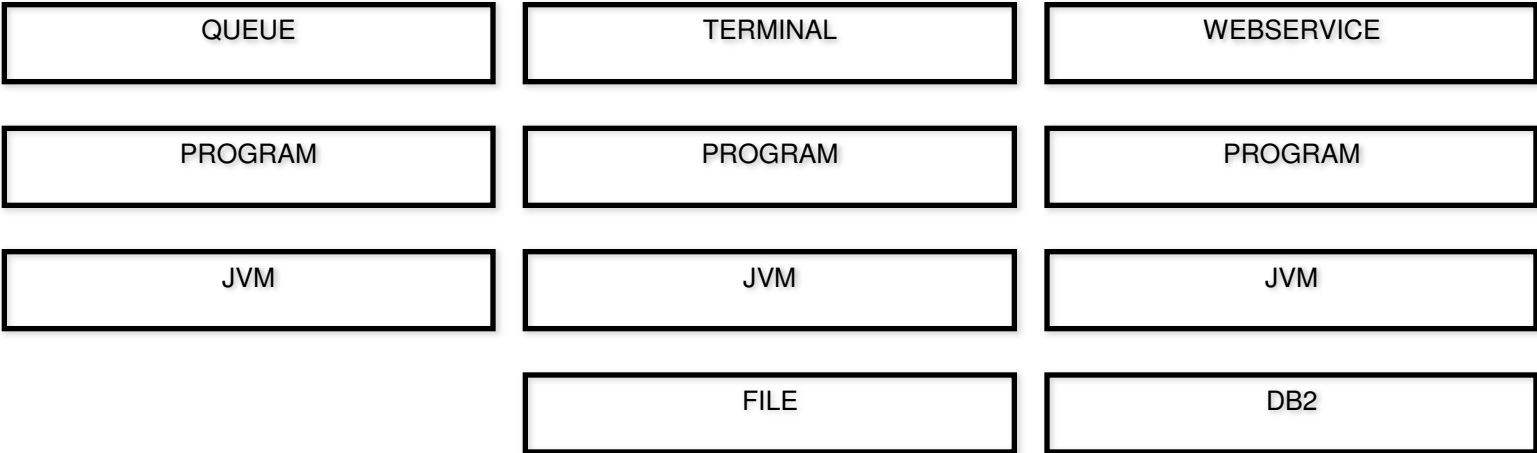
Then we needed high availability



Then we started getting really clever



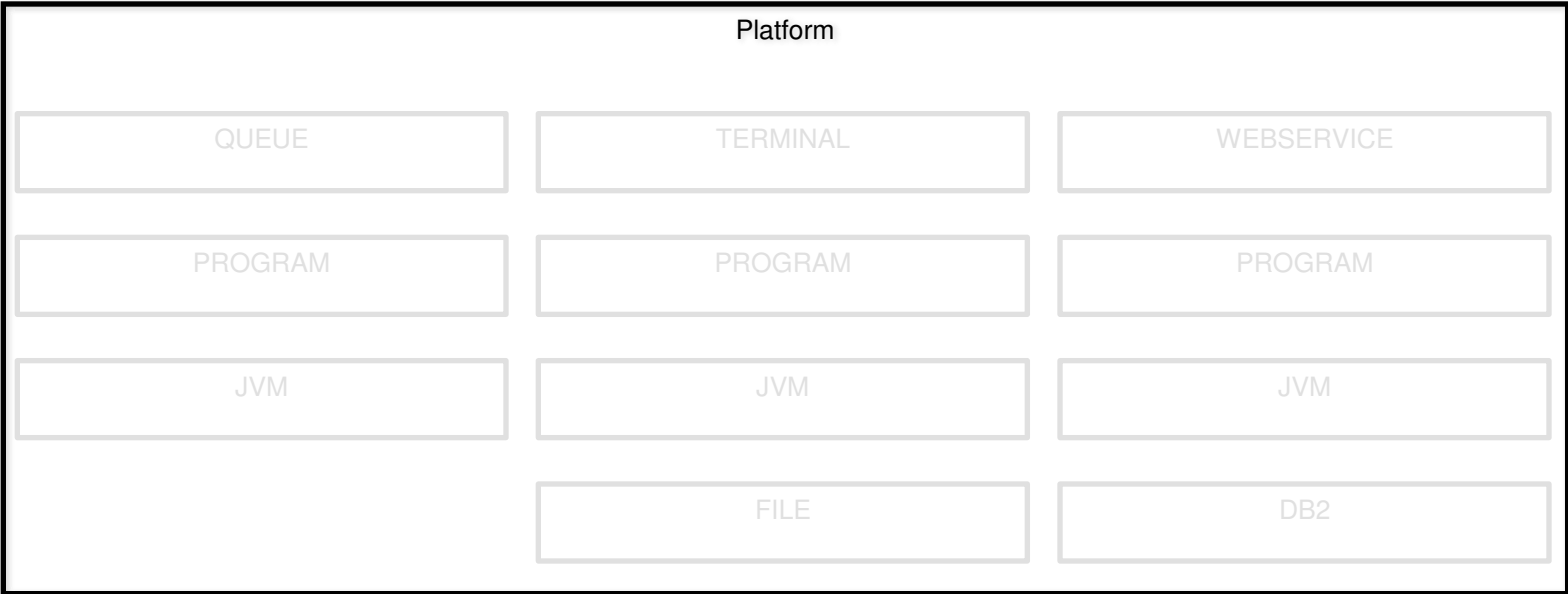
And then came Java



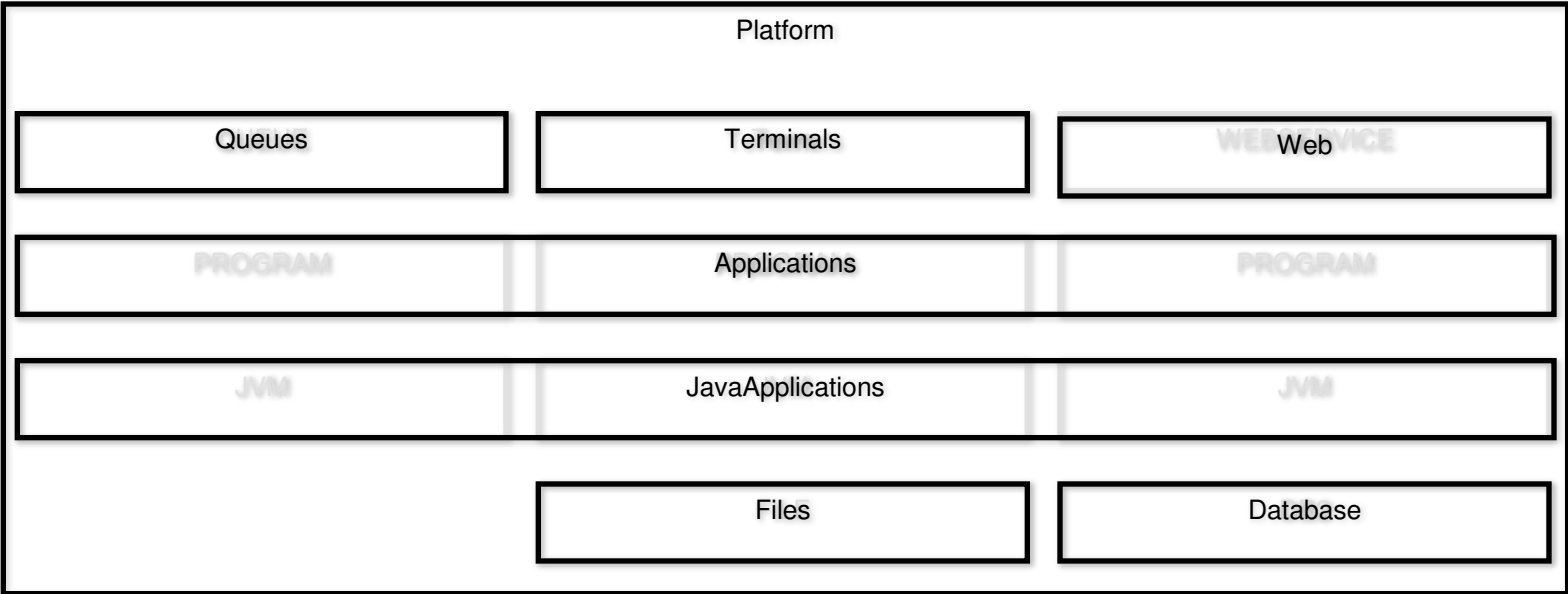
We need things to be simple again

REGION

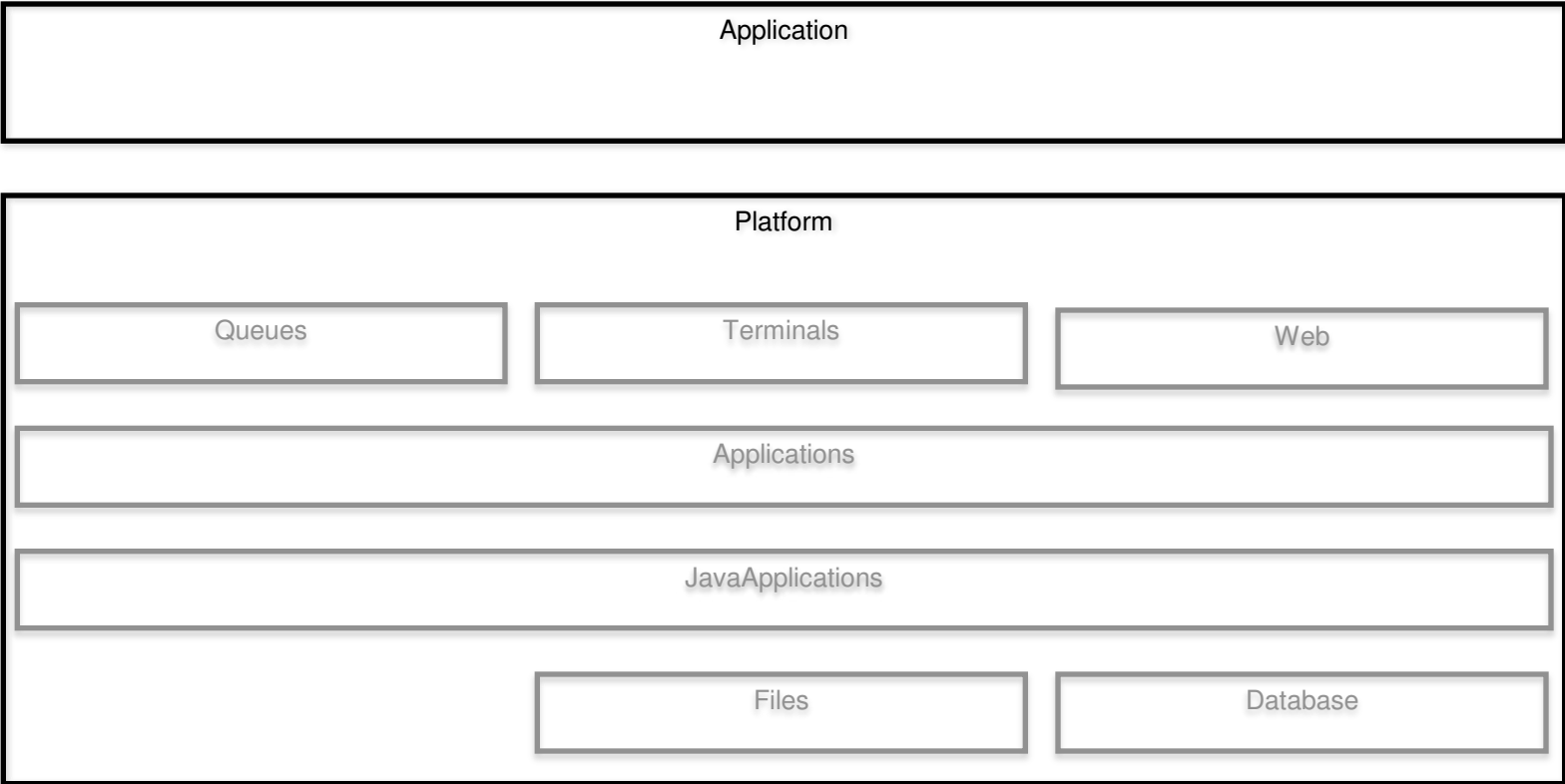
We need things to be simple again: Platform



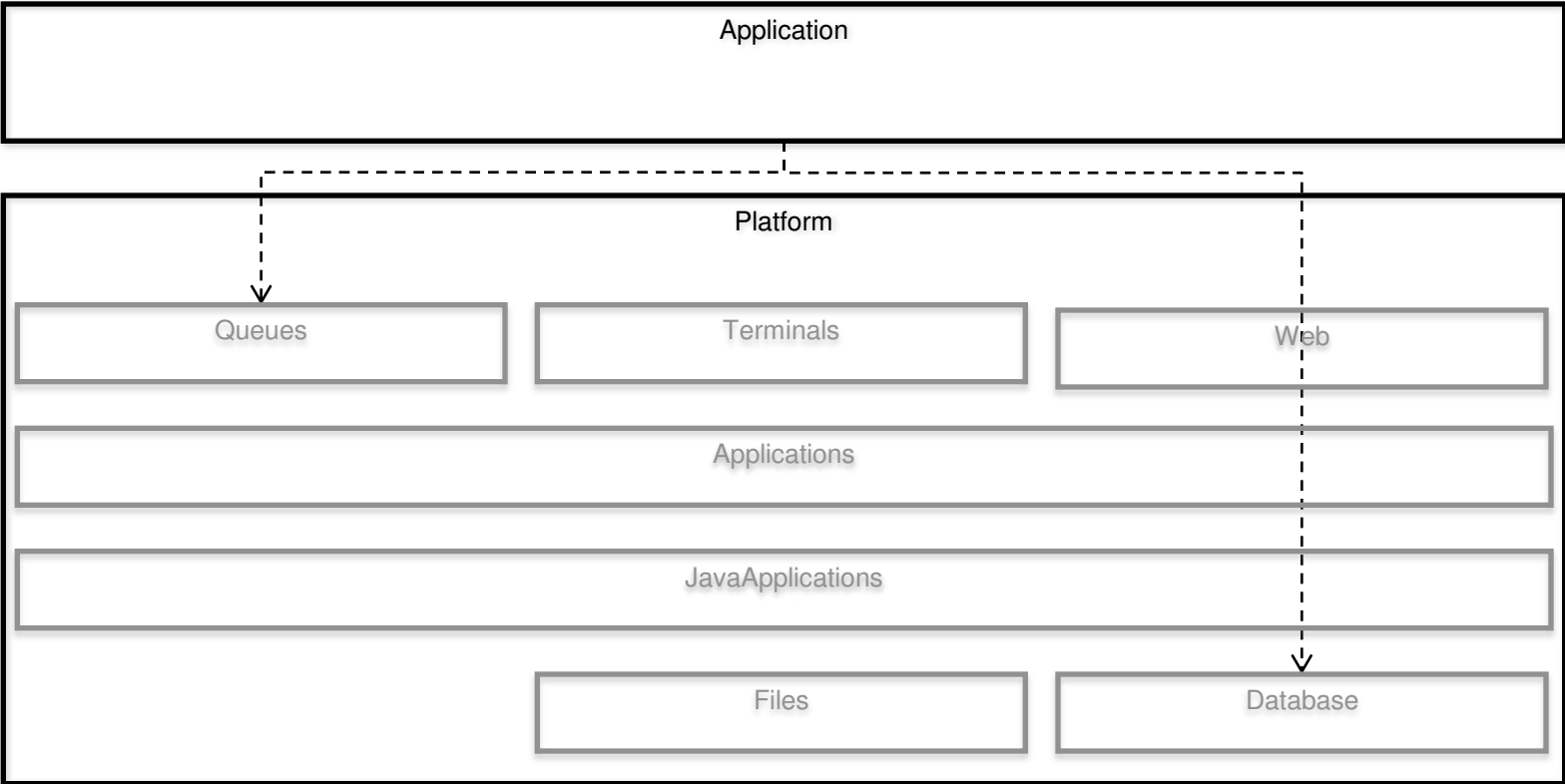
We need things to be simple again: Region Types



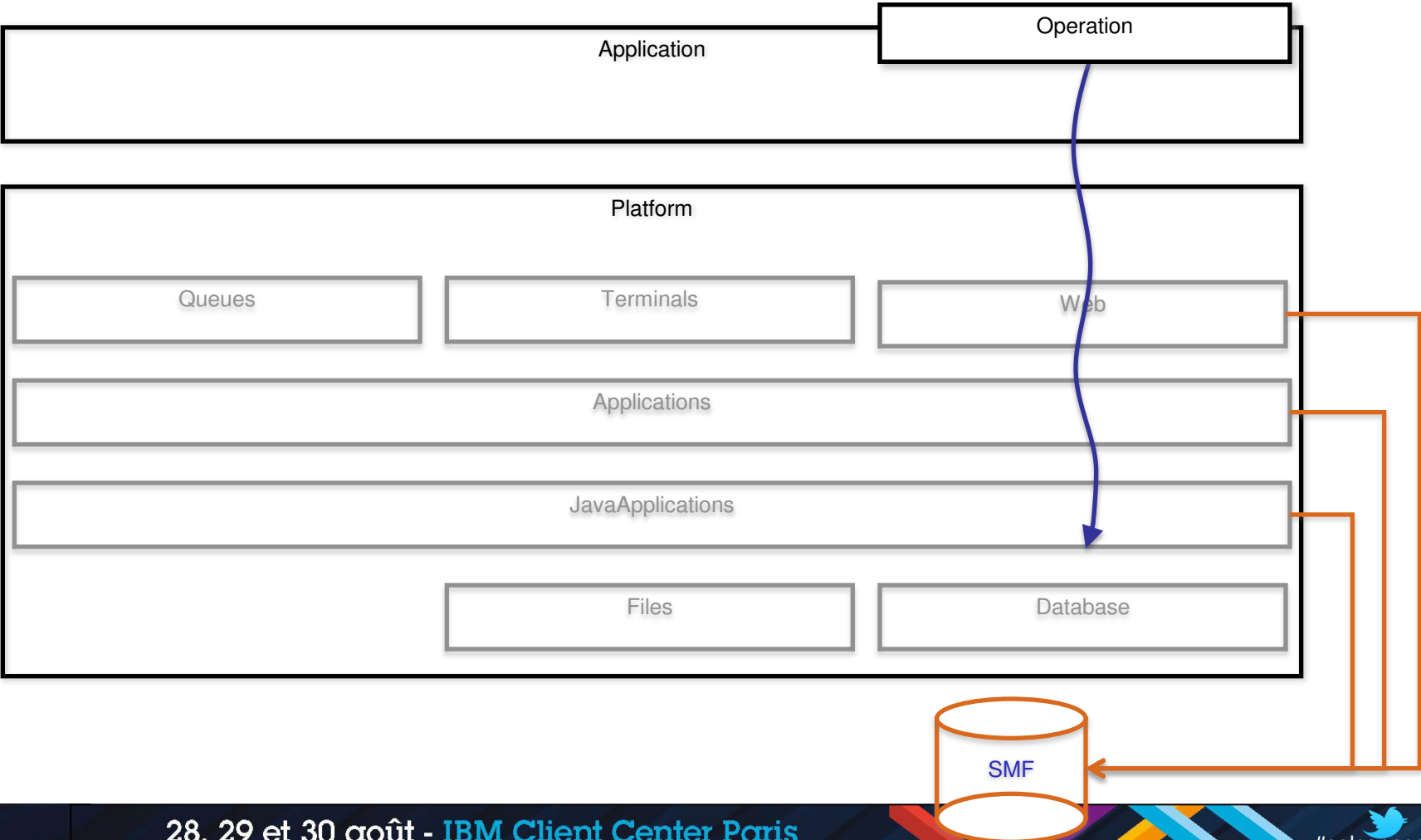
We need things to be simple again: Application



We need things to be simple again: Dependencies



We need things to be simple again: Application Context



New First Class ~~Concept~~ Resources

Application

Platform

Policy

Platform

Set of one or more region types

A collection of zero or more CICS bundles

Life-cycle as a single entity

Hides complexity of and evolution of underlying topology

Provides services for Applications

Control Applications through Policy

Platform Package

Name

RetailBanking

zFS home

/var/cicsts/JTPLEX1/RetailBanking

Region types

ID

name

Resources & Dependencies

define: LIBRARY, TRANSACTION, ...

import: DB2CONNECTION, JVMSERVER, TCPIPSERVICE, ...

Policy

Platform Lifecycle

Create Platform bundle project

Platform Lifecycle

Create Platform bundle project
Package CICS bundle(s)

Platform Lifecycle

Create Platform bundle project

Package CICS bundle(s)

Export Platform to zFS

Platform Lifecycle

Create Platform bundle project

Package CICS bundle(s)

Export Platform to zFS

INSTALL Platform onto a CICSplex

Activate/Deactivate Platform

ENABLE/DISABLE Platform

DISCARD Platform

Platform Lifecycle

Create Platform bundle project

Package CICS bundle(s)

Export Platform to zFS

INSTALL Platform onto a CICSplex

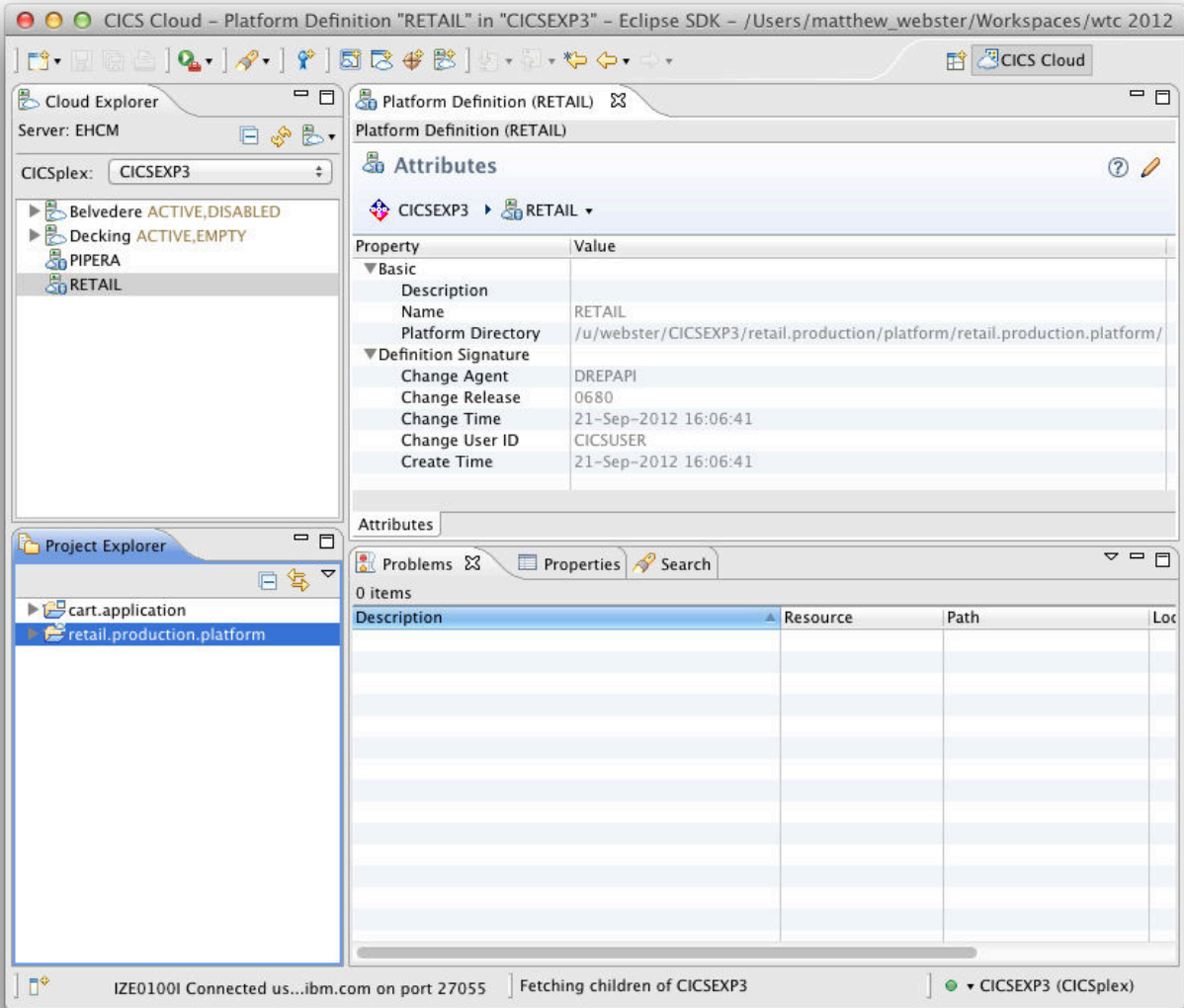
Activate/Deactivate Platform

ENABLE/DISABLE Platform

DISCARD Platform

Platform status (ACTIVE | INACTIVE | ..., ENABLED | DISABLED | ...)

Demonstration



Policy

<http://www.ibm.com/software/cics/openbeta/>

Real World Example: Phone Contract

200 free minutes

Unlimited text messages

500MB of data

“You have now used 80% of your data allowance”

Policy

Controls resource consumption

Consists of one or more rules in an XML document

Threshold: CPU, storage, database access, ...

Action: message, event, abend

Scoped

Single Application operation

Single Application

All Applications on a Platform

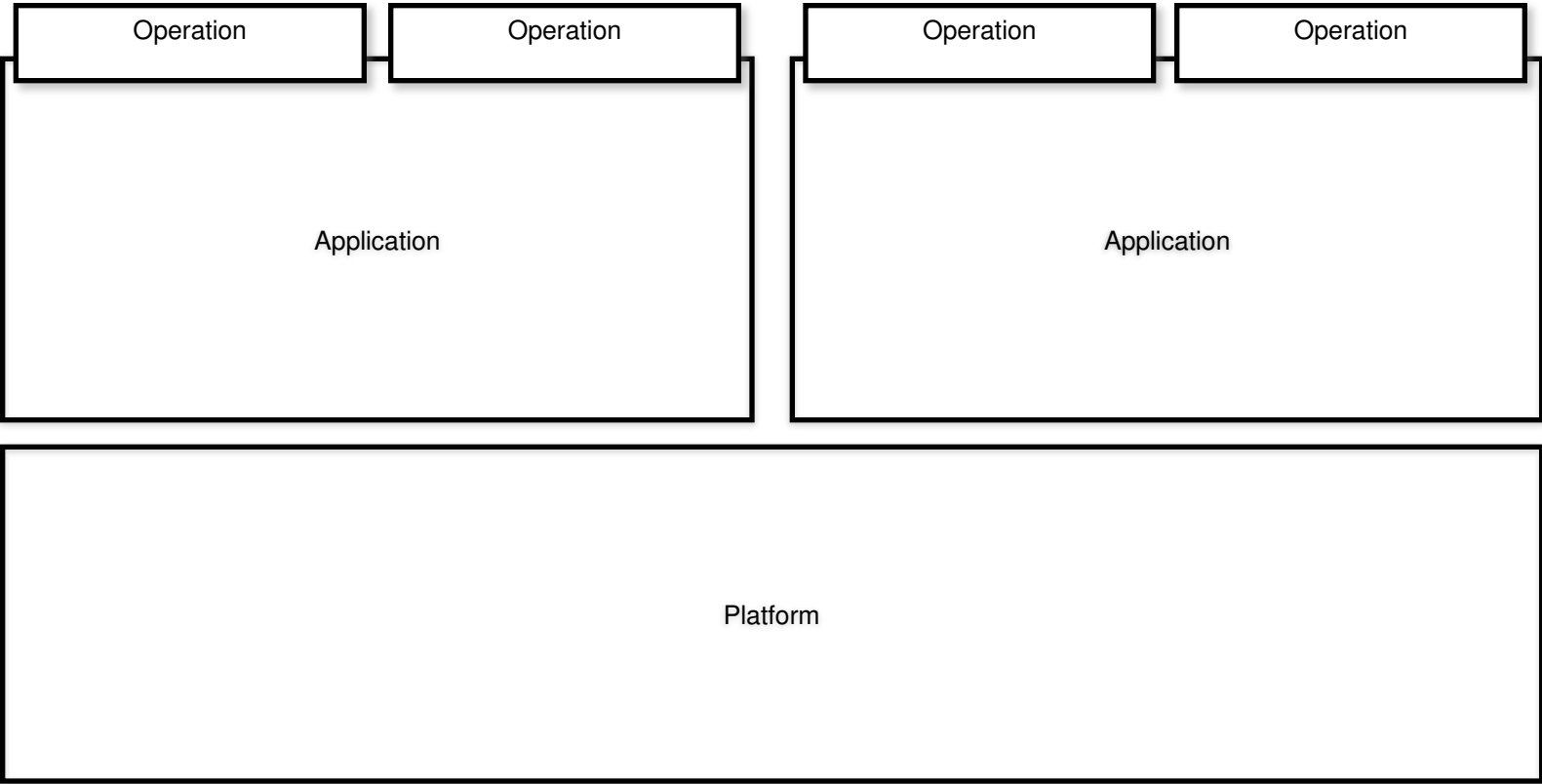
Policy Examples

“Abend any application running on the Retail Banking Platform that tries to request any 24-bit storage”

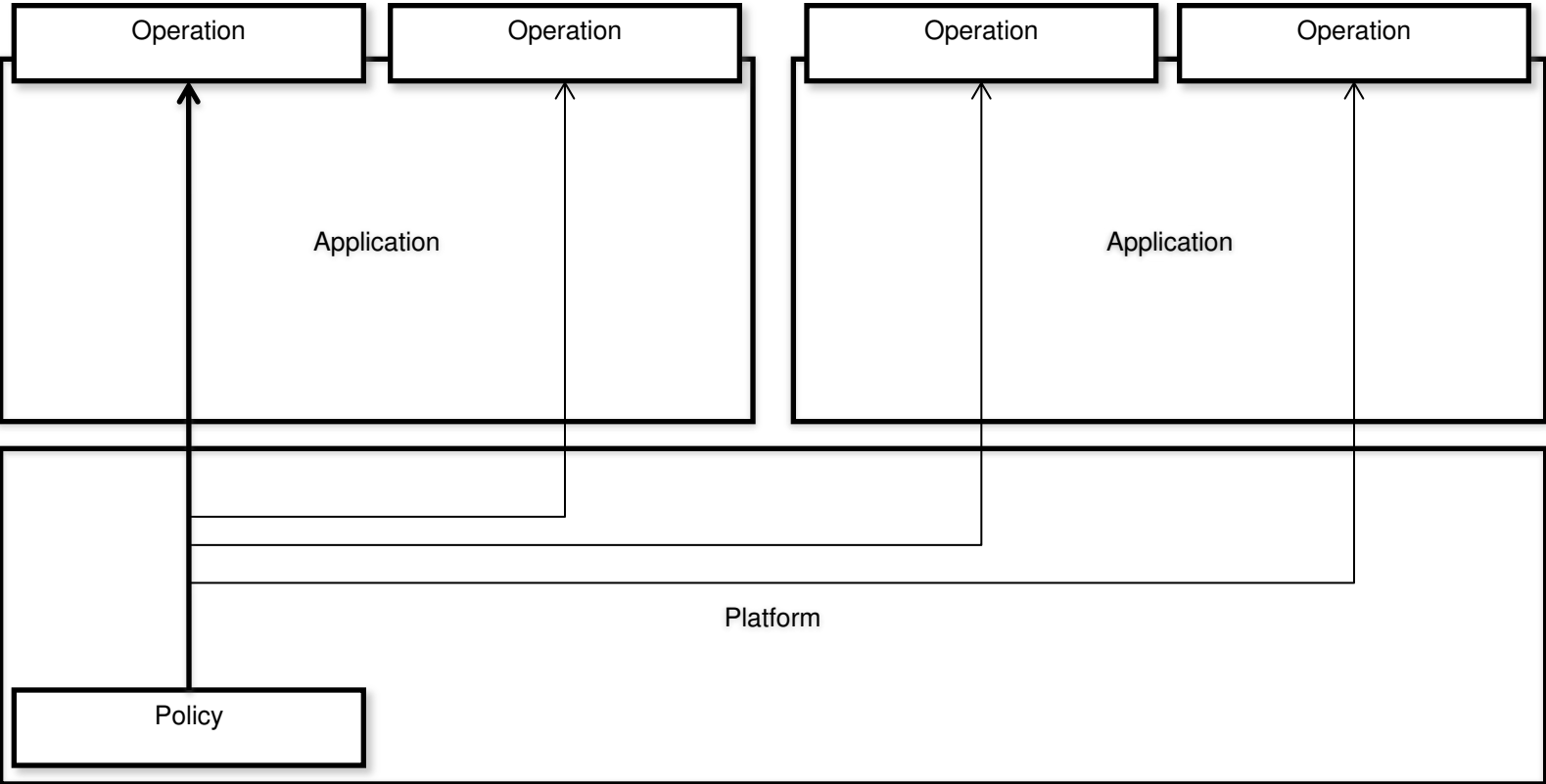
“I want to see a message if Version 1.1 of the Order Update Application allocates more than 1MB of storage”

“The Cart browse operation shouldn’t use more than 1 millisecond of CPU”

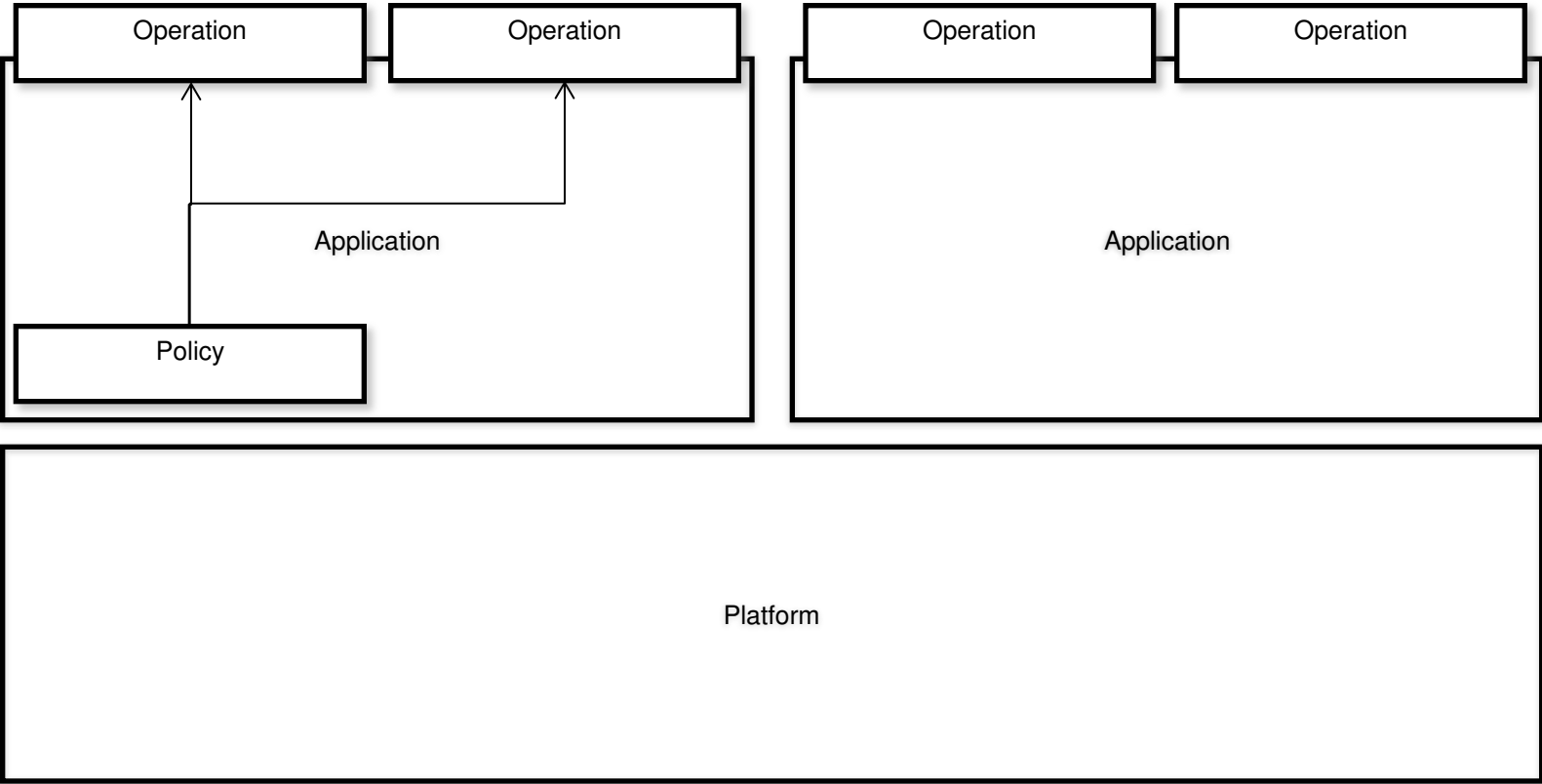
Policy Scoping



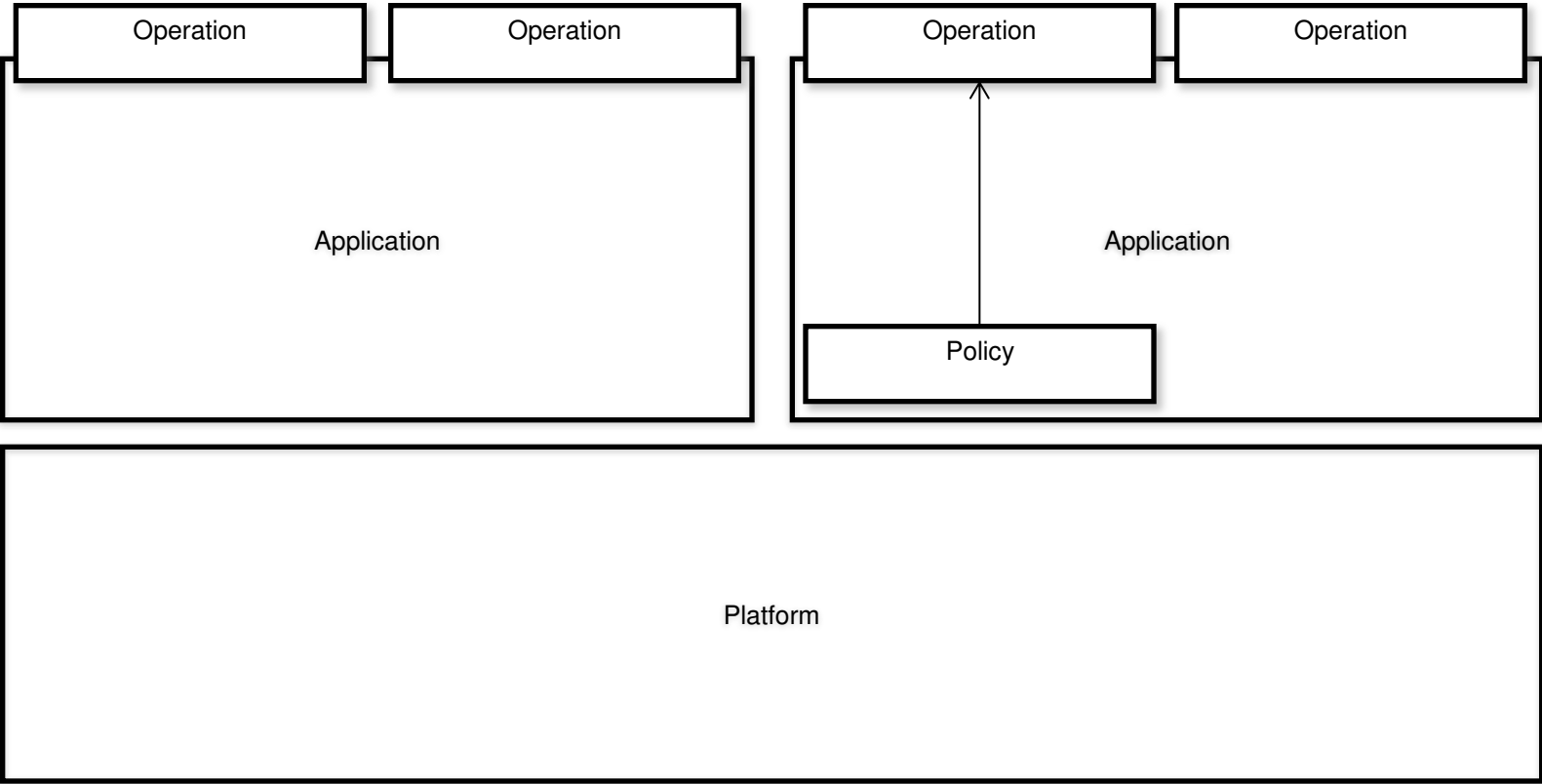
Policy Scoping: Platform



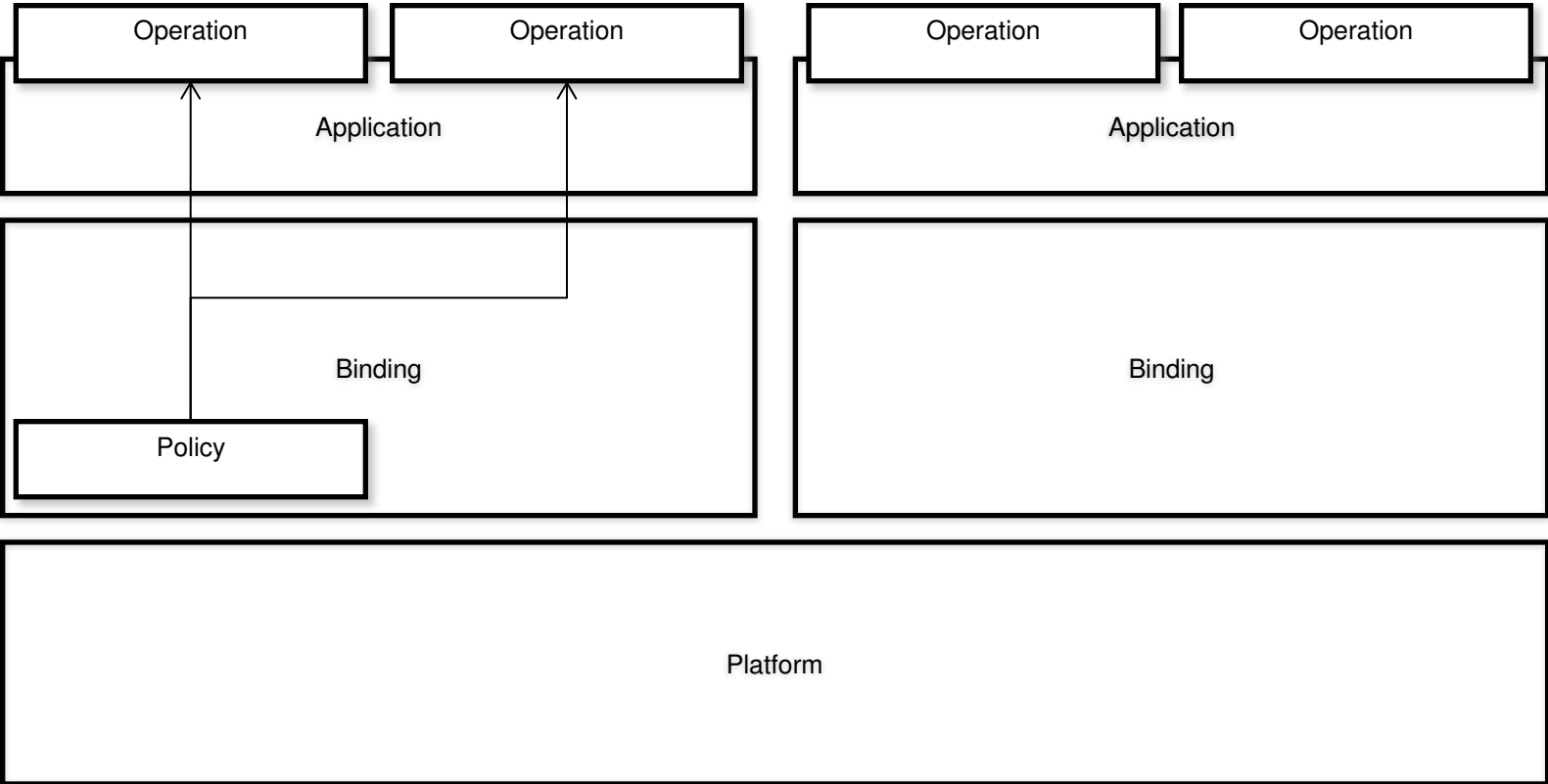
Policy Scoping: Application



Policy Scoping: Operation



Policy Scoping: Application Binding



Information Center

Software information center

Search: Scope: All topics

Contents

- Information Center home
- CICS Transaction Server for z/OS, Version 5.1
 - Product overview
 - What's new
 - Platform as a Service (PaaS) capabilities
 - Applications
 - Platforms
 - Policies
 - Capability and scalability advancements
 - Discontinued functions
 - Changes to the CICS Explorer and CICS Explorer
 - General information
 - Scenarios
 - Getting started
 - Getting started with CICSplex SM
 - Getting started with cloud-style deployment**
 - Getting started with events
 - Getting started with Java
 - Getting started with intercommunication
 - Getting started with web services
 - Installing

IBM Confidential

[CICS Transaction Server for z/OS, Version 5.1 open beta](#) > [Getting started](#)

Getting started with cloud-style deployment

If you want to try out a cloud-style deployment for one of your existing CICS® applications, you can use this phased approach.

To try out the complete process first, using one of the sample applications supplied with CICS, you can follow through the scenario [Scenario: Deploying an application in a PaaS](#).

Stage 1: Create a platform

In CICS, you can use a Platform as a Service (PaaS) to deploy and manage Software as a Service (SaaS)-based CICS applications over multiple CICS regions. The platform provides services to the applications. In this stage of your cloud-style deployment, you can set up a platform including CICS regions where your existing CICS application is installed. To create a platform, you must be using CICSplex® SM to manage your CICS regions.

Use the CICS Explorer® or the CICS Explorer SDK to create a CICS Platform Bundle project and export it to zFS. The platform bundle is a type of management bundle that describes the platform.

Determine Policy using CICS Performance Analyzer

CICS Monitoring Data now contains Application context:

Platform, Application, Version, Operation

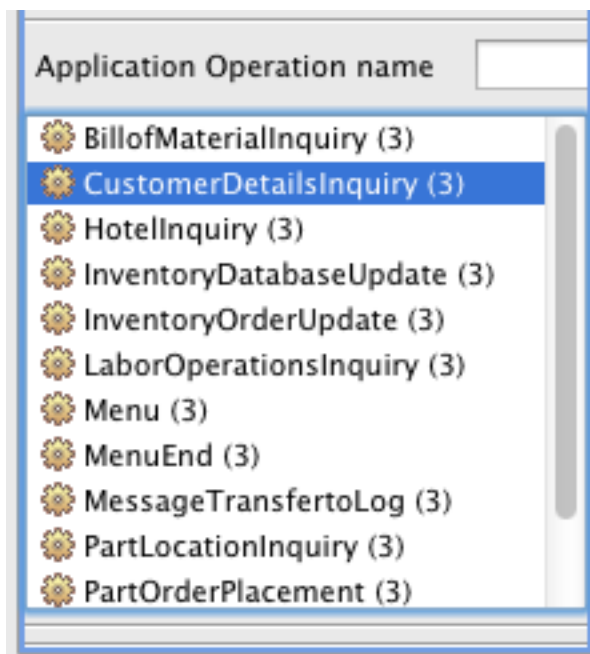
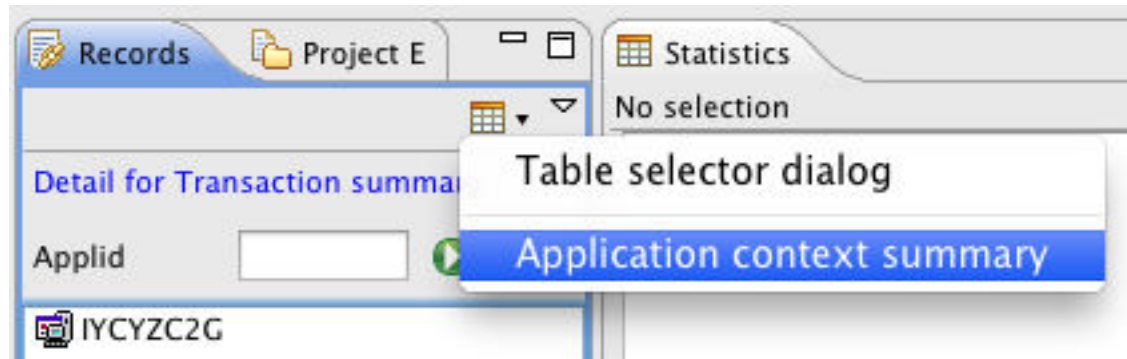
New Application-centric table in PA perspective

Integration with Cloud perspective

Detail/performance breakdown

New policy-centric reports

New Application-centric table in PA perspective



Application context summary (3/3 rows)

Application Context Platform: CToolPlatform. Application: DSWApplication. Version: 1.0.0 . Operation CustomerDetailsInquiry.

Start Date	Start time	Application Platform	Application Name	Application	Application Operation name	Response time
2012-07-30	14.35.00	CToolPlatform	DSWApplication	1.0.0	CustomerDetailsInquiry	0.029954
2012-07-30	14.40.00	CToolPlatform	DSWApplication	1.0.0	CustomerDetailsInquiry	0.030990
2012-07-30	14.45.00	CToolPlatform	DSWApplication	1.0.0	CustomerDetailsInquiry	0.030490

Summary

New Platform resource simplifies Application deployment and management

Helps maintain consistency between DEV, TEST and PROD

New Policy resource simplifies control of resource consumption

Questions?

