

IBM SolutionsConnect 2013

L'IBM TechSoftware nouvelle génération

28, 29 et 30 août
IBM Client Center Paris



#solconnect13

Transformez vos opportunités en succès



IBM SolutionsConnect 2013

L'IBM TechSoftware nouvelle génération

Les pratiques agiles avec Rational : De la définition d'exigences au déploiement d'application



Philippe Leblanc – Technical Sales & Solutions
IBM Rational



Agenda

- L'agilité implique une équipe multidisciplinaire et une collaboration continue entre analystes, développeurs et testeurs. Elle demande une organisation en cycles courts et un suivi de projet en temps réel. L'agilité impose de réduire le fossé entre les équipes de développement et les équipes d'exploitation. Dans cette session, nous verrons comment la plateforme ALM (Application Lifecycle Management) Rational permet de répondre aux exigences de l'agilité
- Partie 1 : L'agilité avec Scrum
- Partie 2 : Présentation de la plateforme ALM – exigences, développement, test, déploiement
- Partie 3 : Exemple de projet ALM

Qu'est-ce que l'Agilité ?

- Une approche itérative et incrémentale menée de façon fortement collaborative avec le juste niveau de formalisme pour produire un logiciel de haute qualité dans le respect des coûts et des délais et en satisfaisant les besoins évolutifs de ses clients.
- Principes
 - Collaboration constante au sein de l'équipe en impliquant les parties prenantes
 - Réponse rapide au changement à l'aide de plans d'itérations
 - Livraison fréquente de logiciel en fonctionnement
 - Tests et validations en continu
 - Transparence/visibilité
 - Processus adaptés "juste ce qu'il faut"
- Les techniques agiles sont largement diffusées dans les organisations informatiques, avec des pratiques très répandues telles que l'intégration continue, le développement itératif, ou encore le développement piloté par les tests (TDD)...

Taux d'adoption

- 69% des organisations mènent un ou plusieurs projets agiles
- 82% sont au delà d'un projet pilote
- 25% restants espèrent mener un projet Agile cette année (2008)

Source : Dr. Dobb's Journal (www.ddj.com)
2008 Agile Adoption Survey

Éléments fondamentaux de Scrum

- Scrum vise à
 - Améliorer la communication et maximiser la coopération
 - Détecter et éliminer tous les obstacles à la production de logiciel opérationnel
 - Maximiser la productivité
- Scrum se veut déployable sur des petits projets jusqu'à des grosses organisations

Roles

- Product Owner
- Scrum Master
- Team

Artifacts

- Product Backlog
- Sprint Backlog
- Burndown Charts

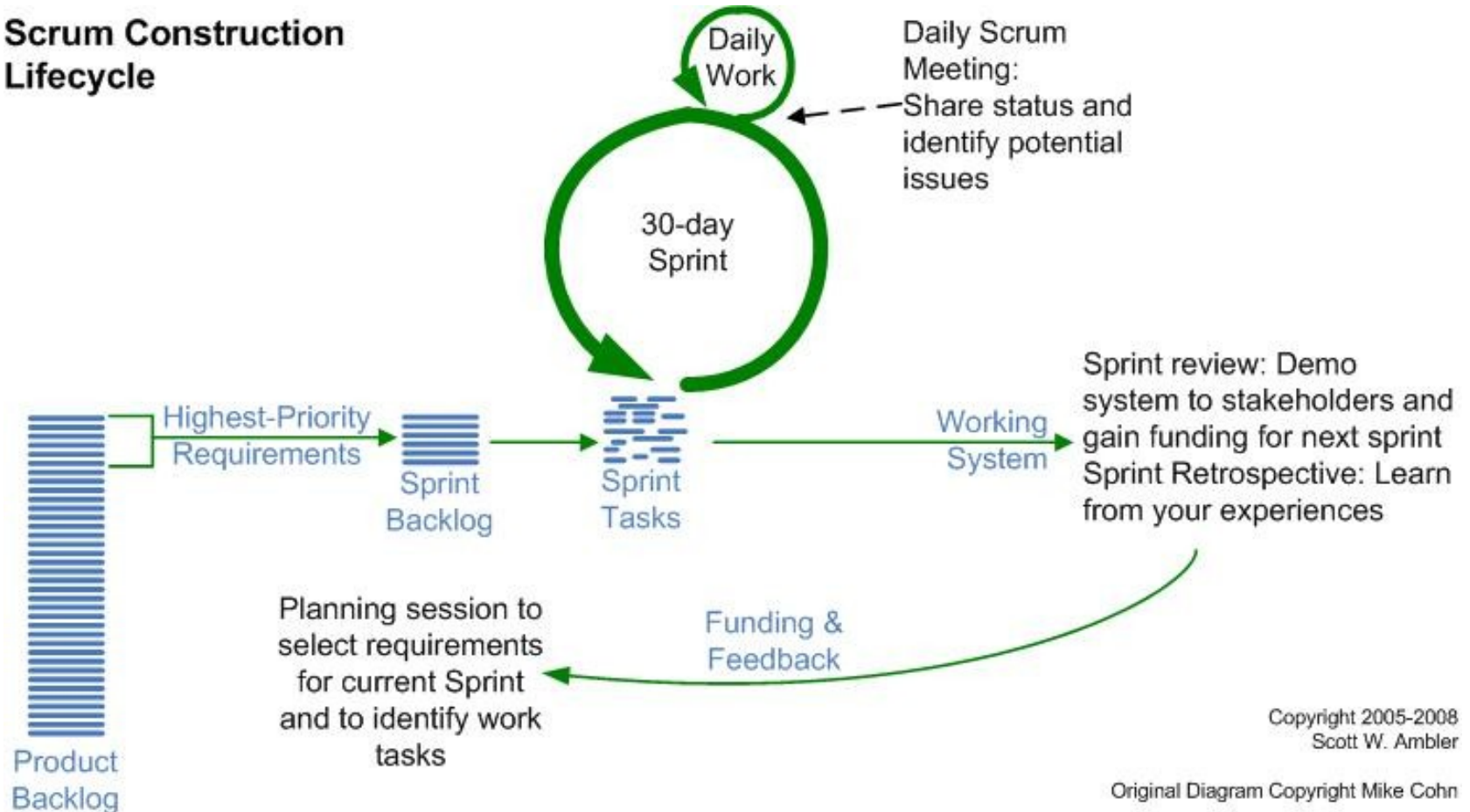
Meetings

- Sprint Planning
- Daily Meeting
- Sprint Review
- Sprint Retrospective

Processus agile Scrum

- Les exigences sont définies, conçues, développées et livrées de manière itérative et incrémentale

Scrum Construction Lifecycle



Qu'est ce que Jazz ?

Vision

La nouvelle génération de produits pour profiter de l'**expérience** et de la **valeur** Rational à destination des équipes qui délivrent des systèmes et des logiciels.

Rational.

Innovation

Un investissement majeur d'IBM pour créer une **plateforme extensible** pour intégrer l'activité des équipes de développement sur tout le cycle de vie

Ingénierie Logiciel Innovante

Communauté

Jazz.net – un espace en ligne pour des **développements ouverts** commerciaux de la plate-forme Jazz et de produits basés sur Jazz ; ainsi qu'une extension de la communauté Eclipse



Produits Rational

Un projet commercial dirigé par IBM qui étend la plate-forme Eclipse. En 2007, **Rational team Concert** est le premier produit basé sur Jazz fait pour supporter les processus agiles. D'autres produits sont sortis depuis et d'autres sont annoncés.



Jazz est une plateforme ouverte dédiée au développement logiciel



A scalable, extensible team collaboration platform

Jazz

- Une communauté sur Jazz.net donnant accès aux produits Jazz
- Une architecture ouverte supportant les mashups et l'intégration de produits non-Jazz
- Une évolution du portefeuille de IBM Rational au cours du temps

Spécification et gestion des exigences avec Requirements Composer (1/2)

- Client Web
- Spécification des exigences : texte, attributs, tableaux, diagrammes, IHM, images, vues et filtres
- Gestion des exigences : accès concurrent, droits, collections, liens suspects, revues, historique, version, template...

The screenshot displays the IBM Requirements Management (RM) web interface. The main content area shows a table of requirements for '11: Requirements for Reuse'. The table has columns for ID, Contents, and Priority. The requirements are as follows:

ID	Contents	Priority
87	1 Reusable requirements for the AMR project	
151	1.1 Operational Temperature Constraints	
38	All exposed equipment shall have an operating temperature range of -4° to 122° F/-20° to 50° C.	Medium
27	All exposed equipment shall have an storage temperature range of ambient to -40°F/40°C ambient to 158F° /70°C .	Medium
293	1.2 Operational Environment Requirements	

The interface also includes a left sidebar with filters (Views, Filter by Tag, Filter by Attribute) and a right sidebar with an Overview panel for the selected requirement, showing details like Project (DOORS NG Beta 3), Created On (Jul 3, 2012 1:49:31 PM), and Modified By (Morgan Brown).

Spécification et gestion des exigences avec Requirements Composer (2/2)

JKE Banking (Requirements) > ... > Use Case Content > 122: JKE Enterprise Diagram

121: Donor Chooses Multiple Organizations

Card: Donor identifies a specific organization.

The Donor(s) identifies organization to donate Dividend funds.

Conversation:

- Registered User accesses **account** information via JKE.com
- Registered user provides secured **login** information in the Account details
- Registered user selects an account in order to donate a percentage of their dividend funds
- Registered user is presented an option to select one or more accounts
- The transaction is logged in the transaction history.

Confirmation:

- The **donation percentage cannot exceed 100%**.

There is information in the transaction history for the account providing details of the transaction (please see User Interface details, below)

Terms starting with "account"

- Account** 1. Credit established under a particular name usually by, against which withdrawals may be made.
- 2. A record of the fi... (Term)
- Account Activity** A summary of activity on an Account. Includes: previous balance, payments, credits, new credit extended, finance charge... (Term)
- Account Profile** (Term)
- Balance of Account** That amount necessary to equate the total debits and total credits posted to any given Account. (Term)

Showing 4 matches. Search other projects. Show more information

Find terms starting with: a ac
Find terms containing: account

122: JKE Enterprise Diagram

The purpose of this diagram is to provide a simple outline of projects simply for planning purposes.

Customer

Registered User

JKE Account Use Cases

- Browse JKE website
- Open an account

Back Office Reg

Process Account Profile

System administrator

Christian Funkhouser

Recent Artifacts

Today (3)

- 608: Meet Customer Needs
- 606: Operate Safely
- 605: Perform Well

Yesterday (0)

Past Week (0)

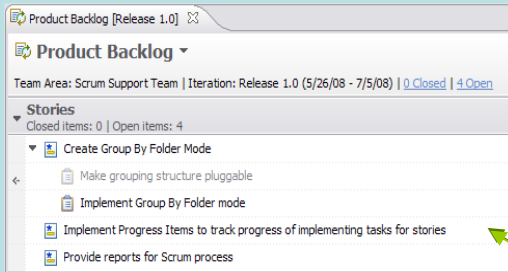
Link From	Link To
606: Operate Safely	608: Meet Customer Needs
608: Meet Customer Needs	605: Perform Well

Showing 3 of 3 Artifacts

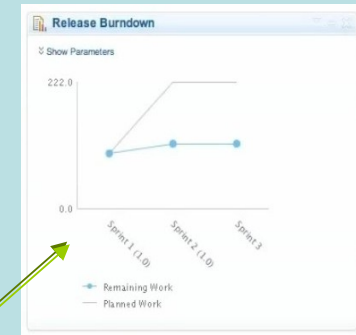
IBM. Jazz

Planification et développement agile intégrés dans Rational Team Concert (1/2)

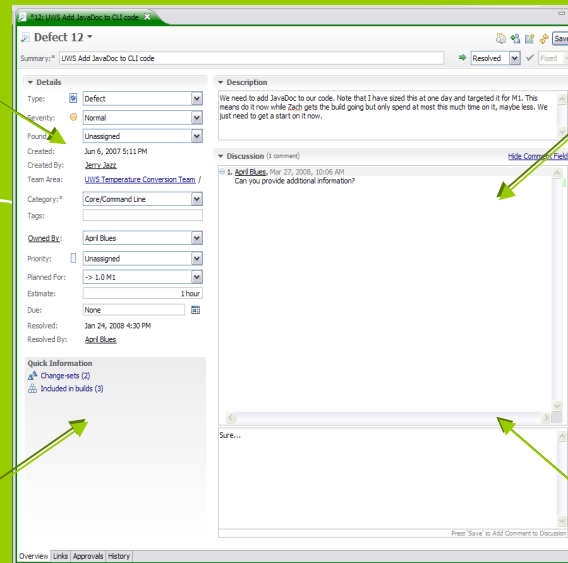
Plans (Agile or Formal)



Dashboards and Reports



Work Items



Build

Build workshop.squawk.core.continuous.build
B20080303-1042-workshop.squawk.core.continuous.build

Completed

Duration: 27 seconds

Start Time: March 3, 2008 1:41:40 PM

Completed: March 3, 2008 1:42:07 PM

Status Trend: [Progress bar]

Contribution Summary

Changes: [Show changes](#)

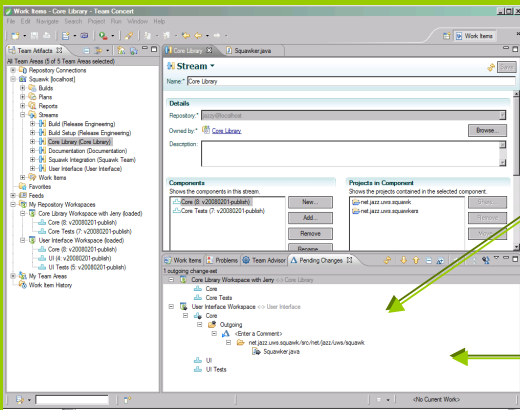
Logs: [1 log](#)

Repository Workspace: [workshop.squawk.core.build.workspace](#)

Snapshot: [workshop.squawk.core.continuous.build_20080303-1041](#)

Work items: [1 included in build](#)

SCM



Planification et développement agile intégrés dans Rational Team Concert (2/2)

- Processus Agiles et Scrum
- Définition et suivi des stories et des tâches
- Gestion de configuration associée aux tâches
- Tableaux de bord
- Communication instantanée
- Build continu

Work item types:

- Defect
- Task
- Retrospective
- Story
- Impediment

Everyone (default)

- Product Owner
- ScrumMaster
- Team Member
- Stakeholder

Pending Changes

2 outgoing change-sets

- JUnit <-> JUnit
 - JUnit
 - Outgoing
 - 25689: Improve coverage of the assertion class
 - Suspended
 - Erich Gamma Cleanup
 - SilverCity <-> SilverCity
 - SilverCity
 - Outgoing
 - 25704: Implement Loadtest on Linux
 - WorkItem Workspace <-> WorkItem
 - AgilePlanning
 - Filesystem

Planned Items

View As: Taskboard

Andrew Hoo

Closed Items: 1 | Open Items: 4

Load: 6/21 | +15 h

Estimated: 100%

Story	Open	In Progress	Resolved
Implement compact		Expose rendering for registrations 2 hours 2 days	Expose rendering for users 1 day
Add colors to the page	Pick nice colors 4 hours		

Heather Fraser-Dube

Closed Items: 1 | Open Items: 1

Load: 1/21 | +20 h

Story	Open	In Progress
Implement compact		Expose rendering for donations 1 hour 2 days

JUnit Sprint Backlog [4.4 s2]

JUnit Sprint Backlog

Team Area: JUnit Team | Iteration: 4.4 s2 (5/14/09 - 6/13/09) | 10 Closed | 12 Open

Progress: 13.5/186.5 | -46.25 h

Estimated: 75%

Bill Cassavelli

Closed items: 5 | Open items: 3

Load: 2 / 58 | +56 h

Estimated: 100%

- Improve documentation for 4.4
 - Unassigned 0.25/1.25 h 55
- timeout doesn't work properly for >=2 cases in junit4.3?
 - 2 hours
 - Unassigned -- 13

Jason Mitchell

Closed items: 2 | Open items: 5

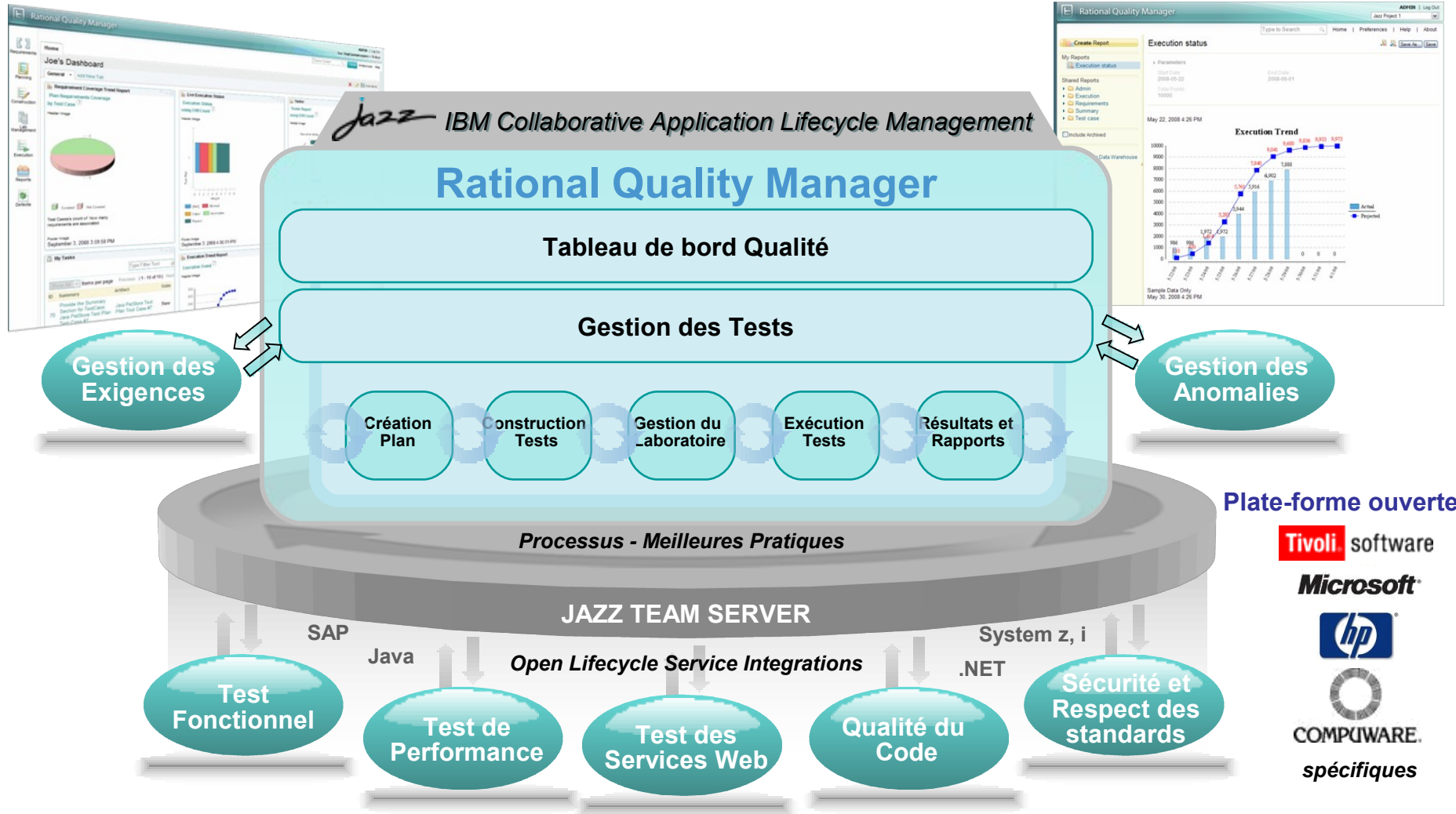
Load: 136 / 120 | -16 h

Estimated: 75%

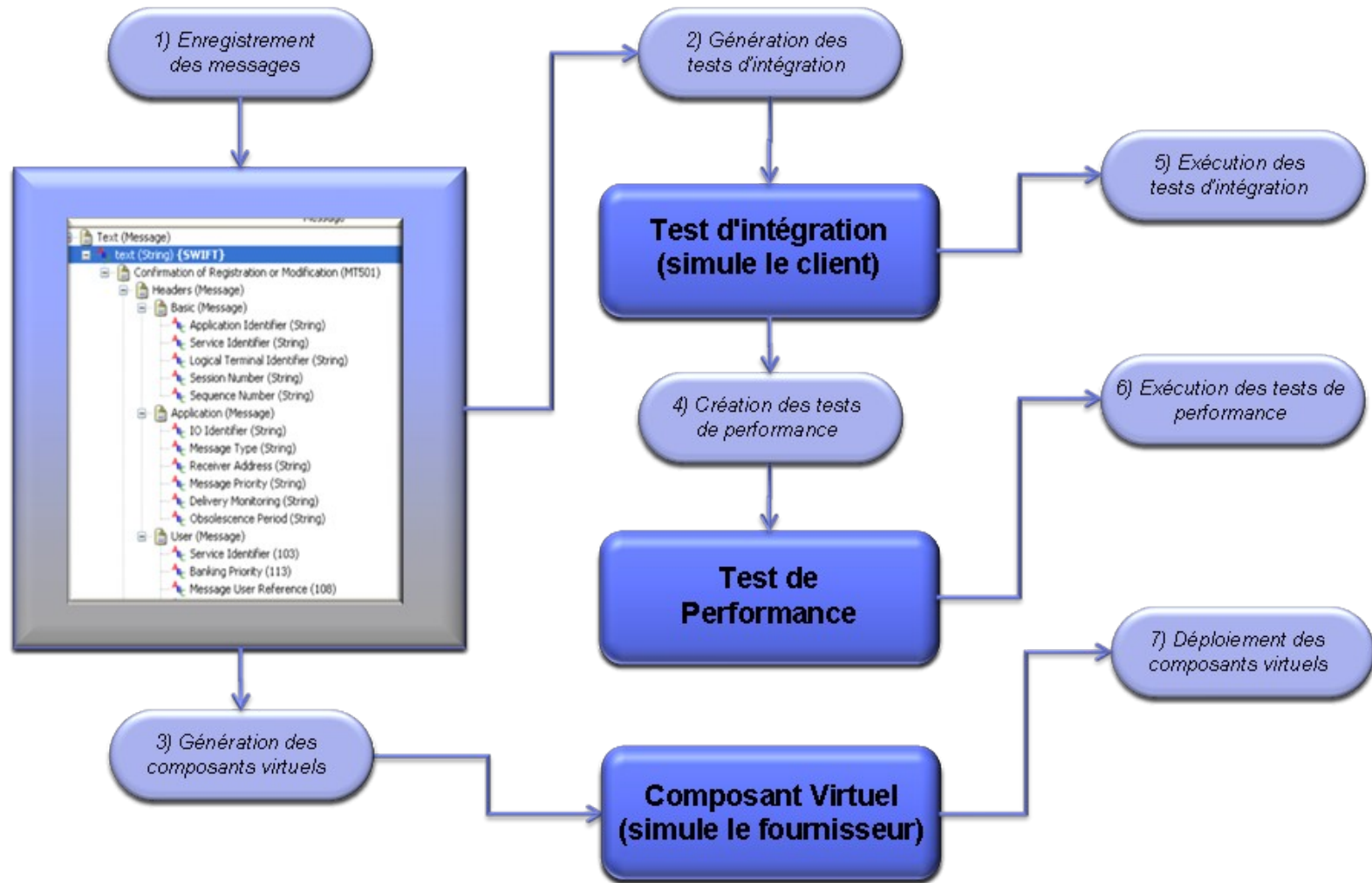
View As

- Backlog
- Developer's Taskb...
- Planned Time
- Team Folders
- Work Breakdown

Gestion centralisée des tests avec Rational Quality Manager



Tests d'intégration et de virtualisation avec Rational Test Workbench

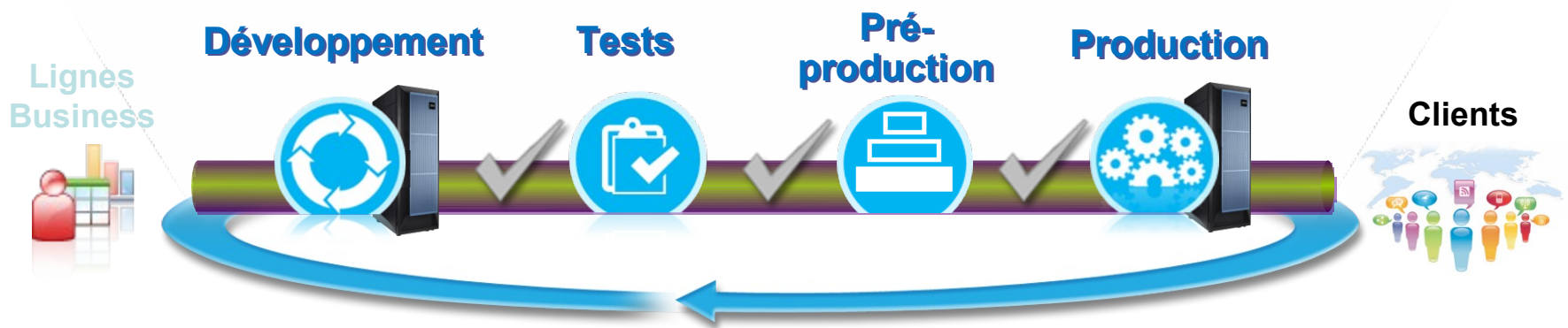


Déploiement continu (DevOps Continuous Delivery) avec BuildForge et UrbanCode (uRelease et uDeploy)

- **Continuous Delivery**

Ensemble itératif de contrôles qualité et de vérifications que chaque élément de code applicatif doit passer au cours des phases du cycle de vie avant d'être livré en production.

- Assurer que les applications sont prêtes pour la production tout au long du cycle et peuvent être livrées à tout moment sans retour arrière dû à des problèmes qualité



Accès simple et complet aux information Projets et Equipes par tableaux de bord adaptables

Jazz Project Description

Process enabled team collaboration platform

The goal of the Jazz project is to build a scalable, extensible team collaboration platform for seamlessly integrating tasks across the software lifecycle. The new technology is called the Jazz Platform. The Jazz project is defining the overall architecture of the Jazz Platform, and building an initial set of Jazz components that plug in to the Jazz Platform.

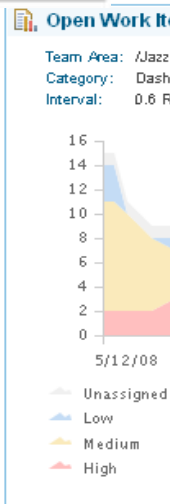
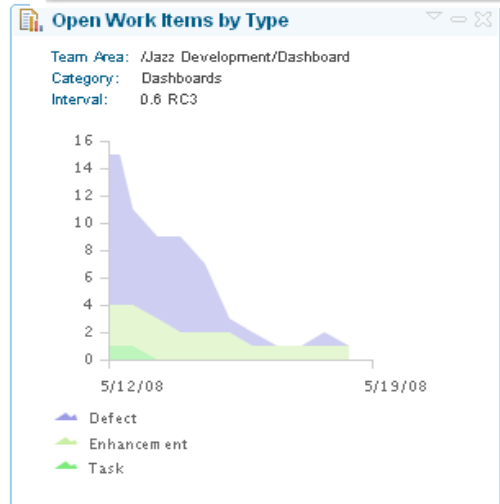
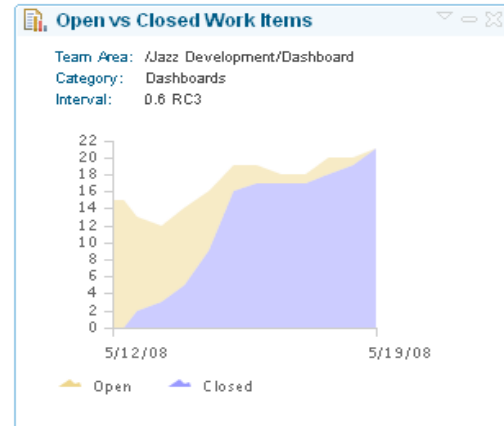
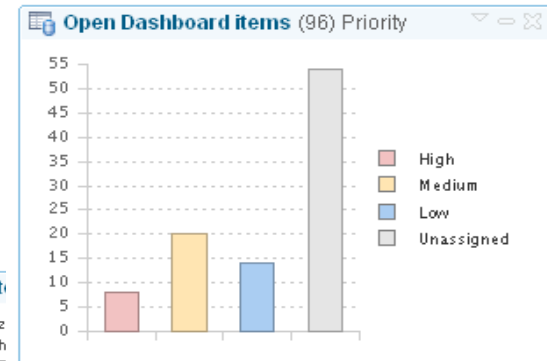
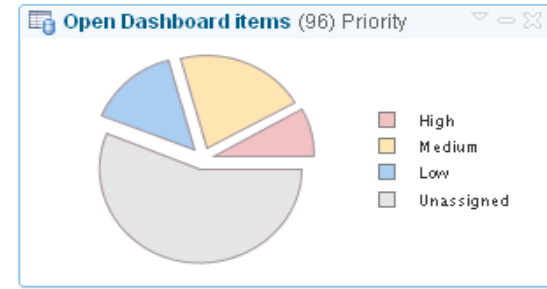
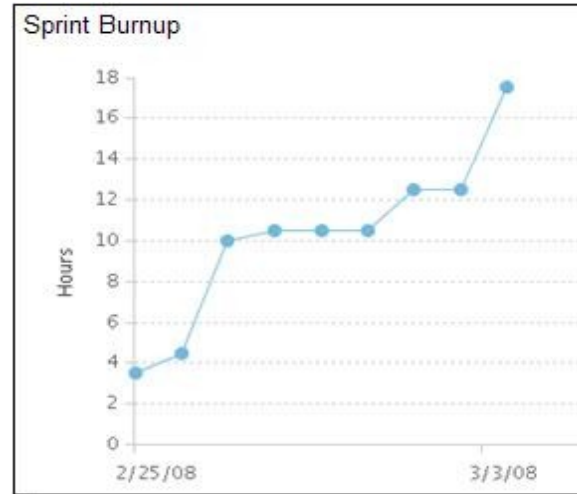
The work in the Jazz project is divided into development work and maintenance work. Development work produces a consecutive line of releases. Maintenance work produces bug fix releases of the released produced by the development work.

Development as well as maintenance work is overseen by the PMC. The team members listed in this project area constitute the PMC.

Jazz Project Members (11)

CQ Connector Account	connector
Dejan Glozic	dashboardadmin
Erich Gamma	dashboardadmin, projectadmin, PMC, contributor
Jean-Michel Lemieux	dashboardadmin, projectadmin, PMC, contributor
John Vasta	connectoradmin
Kai-Uwe Maetzel	PMC, contributor
Kevin Haaland	PMC, contributor
Kim Moir	projectadmin
Peter Klien	PMC, contributor
Scott Rich	PMC, contributor

Page 1 of 2



Open Dashboard items (96) Priority

High(8) Medium(20) Low(14)
Unassigned(54)

Open Dashboard items (96) Priority

Priority	Count
High	8
Medium	20
Low	14
Unassigned	54

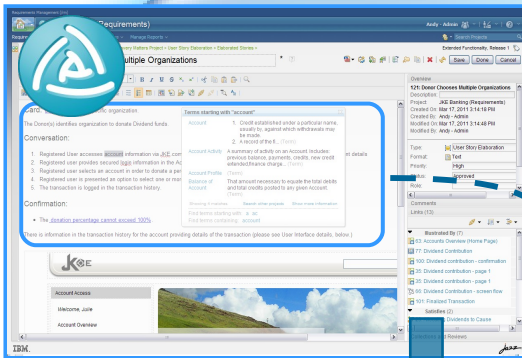
Traçabilité de bout en bout

Connexion des exigences, des développements et des tests

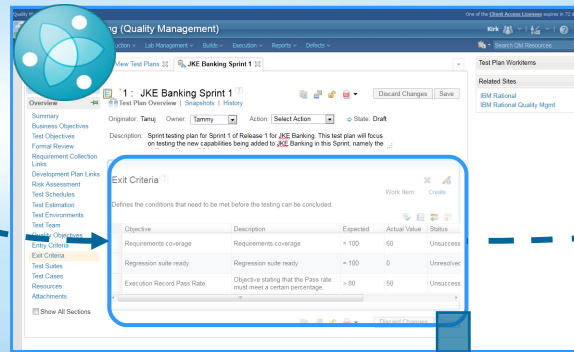


Analystes,
Développeurs,
Testeurs

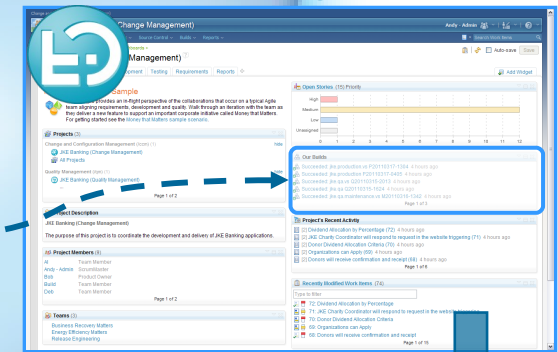
Requirements
Composer



Rational Team
Concert



Rational Quality
Manager



ID	Name	Artifact Type	Implemented By	Validated By
8	Dividend allocation by percentage	Feature	75: Dividend Allocation by Percentage	18: Dividend Allocation by Percentage
	Requirements	Feature	6: Customers can Nominate an Organization	21: Customers can nominate an organization for the program
			Development	10: Customers can Nominate an Organization
12	Donor Dividend Allocation Criteria	Feature	73: Donor Dividend Allocation Criteria	16: Donor Dividend Allocation Criteria
	Satisfied by			
23	Frequency of dividend transfer	Feature	58: Frequency of dividend transfer	1: Frequency of dividend transfer

Support méthodologique aux pratiques agiles

Task: Plan the release

At the beginning of a project the team will create a high-level release plan

Purpose
To level-set expectations (internal and external) and to proactively uncover needs and dependencies

Relationships

Roles	Primary:	Additional:	Assisting:
	• Development Team Member	• Product Owner • Scrum Master	

Inputs

Mandatory:	Optional:	External:
• Product Backlog	• None	• None

Main Description

At the beginning of a project the team will create a high-level release plan is not necessary. The release plan should address:

- The number and duration of the sprints
- How many people or teams should be on this project
- The number of releases
- The value delivered in each release
- The ship date for the releases

Key inputs to release planning are:

- The prioritized Product Backlog
- The estimated velocity
- Any hard and fast to-market dates the Product Owner must satisfy

Owned By: Unassigned

Task Process Guidance
See detailed description.

Agile ALM with Scrum

- Welcome to Agile ALM with Scrum
- Getting Started
 - Applying the "Agile ALM with Scrum" solution on a project
 - Tutorial: Scrum in Rational Team Concert
- Process flow
 - Project Initiation
 - Create Product Backlog
 - Groom the Product Backlog
 - Plan the release
 - Sprint
 - Groom the Product Backlog
 - Sprint Planning
 - Daily Scrum
 - Code, Test, Deliver
 - Monitor Sprint progress
 - Conduct Sprint Review
 - Sprint Retrospective
- Rational Team Concert
 - Work Item Types
 - Process flow
 - Examples
 - Tool Mentors

Comprehensive Scrum practice guidance supports the organization to deliver consistent results

Links to process guidance are provided from within the RTC work item

Plateforme ouverte basée sur les standards OSLC (open-services.net)

Rational Team Concert

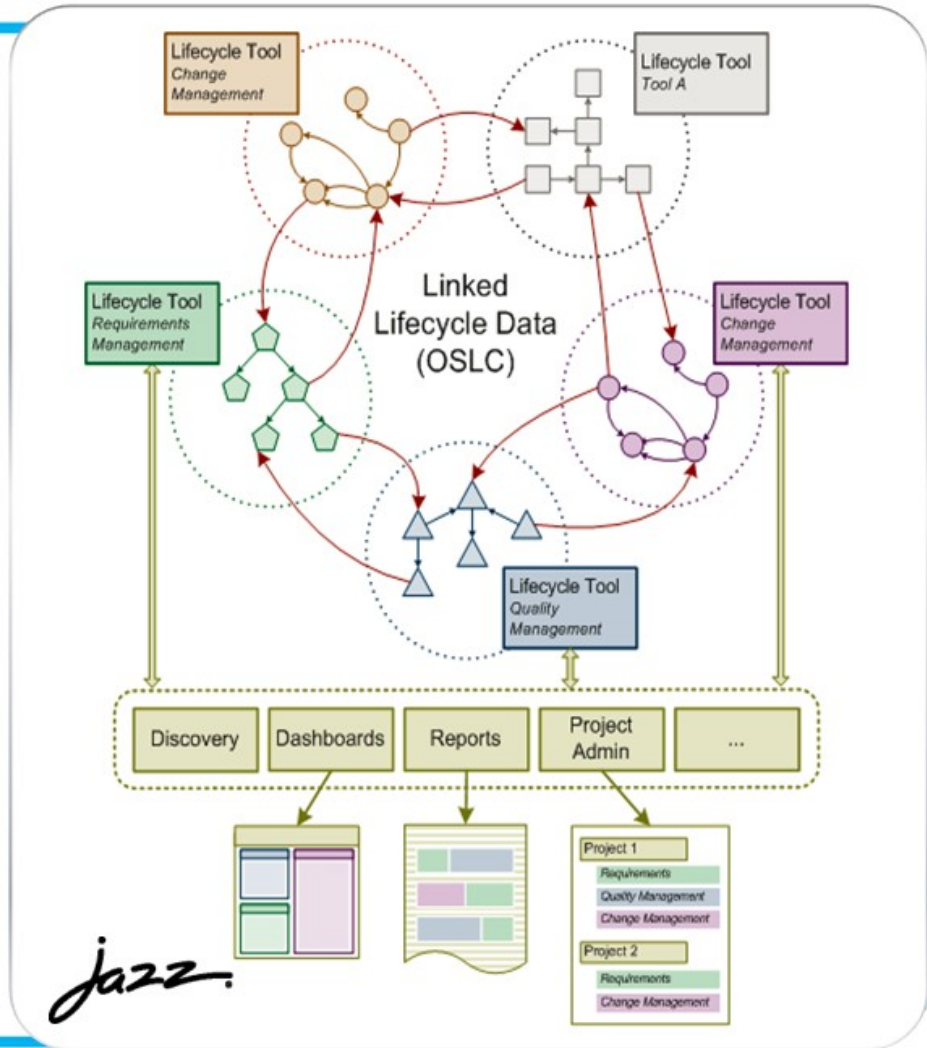
Integrated by design.



Works with Commercial, Open Source and Homegrown Tools



Homegrown



Accès aux ateliers sur Jazz.net

- Un atelier
 - Cible un marché
 - Se compose d'un ensemble d'outils pré-configurés sur la plateforme Jazz
 - Inclut des processus et pratiques définis et accessibles lors de l'exécution des projets
- Atelier « CLM » pour le développement des applications IT
- Atelier « Systems » pour la conception des systèmes complexes et le développement du logiciel embarqué
- Disponible sur Jazz.net
 - Téléchargement, forum, backlog...

Solutions

Our products play nicely with each other. Use them separately or together as part of one of our lifecycle management solutions.



Collaborative Lifecycle Management

- Rational Team Concert
- Rational Quality Manager
- Rational Requirements Composer
- Extend with:
 - Design Manager



Systems and Software Engineering

- Rational Team Concert
- Rational Quality Manager
- Rational DOORS
- Rational Rhapsody

IBM SolutionsConnect 2013

L'IBM TechSoftware nouvelle génération

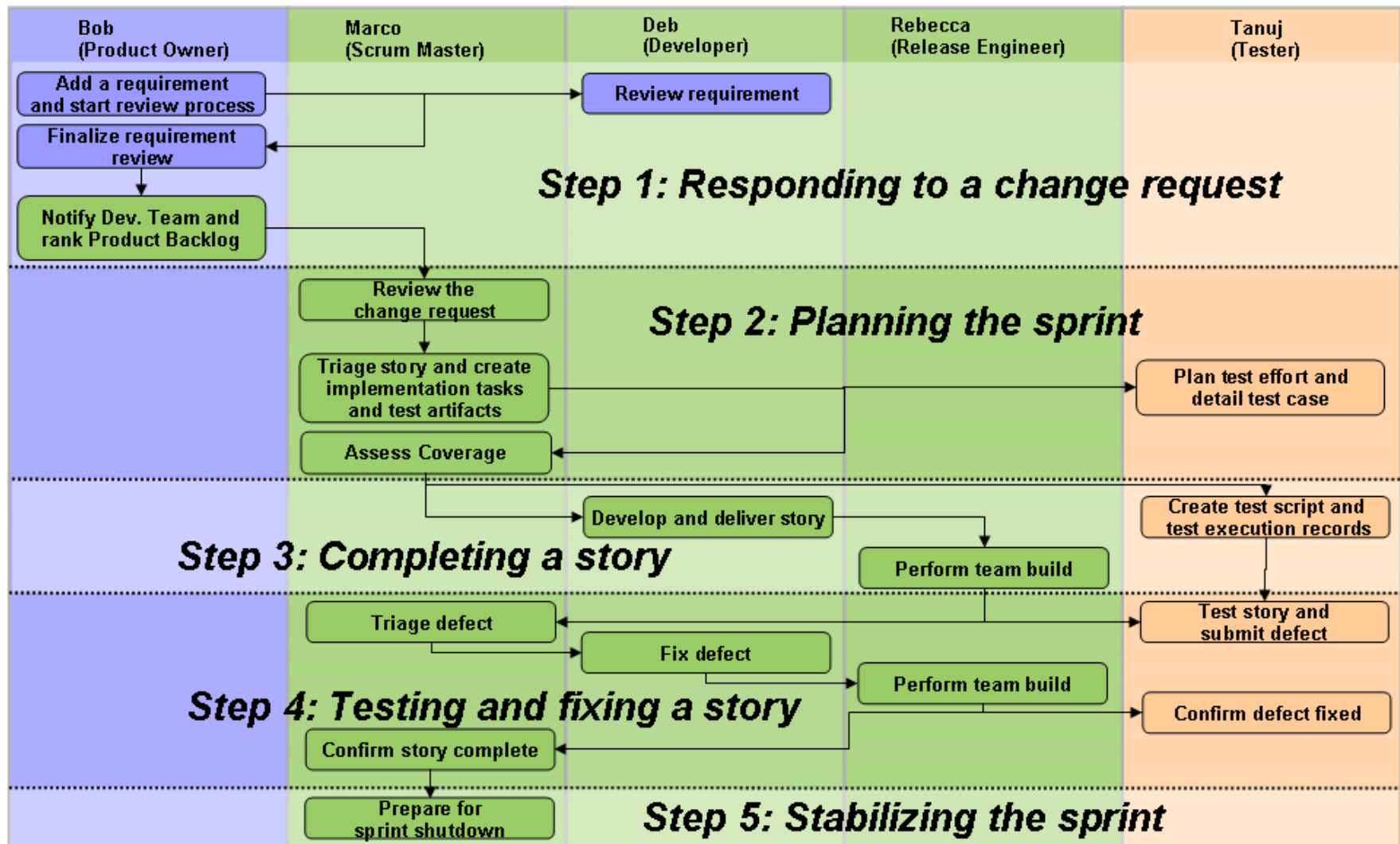
Démonstration

28, 29 et 30 août - IBM Client Center Paris

 #solconnect13



Workflow agile typique supporté par la plateforme Rational



IBM SolutionsConnect 2013

L'IBM TechSoftware nouvelle génération

Questions

28, 29 et 30 août - IBM Client Center Paris



#solconnect13



Please note the following

IBM's statements regarding its plans, directions, and intent are subject to change or withdrawal without notice at IBM's sole discretion.

Information regarding potential future products is intended to outline our general product direction and it should not be relied on in making a purchasing decision.

The information mentioned regarding potential future products is not a commitment, promise, or legal obligation to deliver any material, code or functionality. Information about potential future products may not be incorporated into any contract. The development, release, and timing of any future features or functionality described for our products remains at our sole discretion.

Performance is based on measurements and projections using standard IBM benchmarks in a controlled environment. The actual throughput or performance that any user will experience will vary depending upon many factors, including considerations such as the amount of multiprogramming in the user's job stream, the I/O configuration, the storage configuration, and the workload processed. Therefore, no assurance can be given that an individual user will achieve results similar to those stated here.



Acknowledgements and disclaimers

Availability: References in this presentation to IBM products, programs, or services do not imply that they will be available in all countries in which IBM operates.

The workshops, sessions and materials have been prepared by IBM or the session speakers and reflect their own views. They are provided for informational purposes only, and are neither intended to, nor shall have the effect of being, legal or other guidance or advice to any participant. While efforts were made to verify the completeness and accuracy of the information contained in this presentation, it is provided AS-IS without warranty of any kind, express or implied. IBM shall not be responsible for any damages arising out of the use of, or otherwise related to, this presentation or any other materials. Nothing contained in this presentation is intended to, nor shall have the effect of, creating any warranties or representations from IBM or its suppliers or licensors, or altering the terms and conditions of the applicable license agreement governing the use of IBM software.

All customer examples described are presented as illustrations of how those customers have used IBM products and the results they may have achieved. Actual environmental costs and performance characteristics may vary by customer. Nothing contained in these materials is intended to, nor shall have the effect of, stating or implying that any activities undertaken by you will result in any specific sales, revenue growth or other results.

© **Copyright IBM Corporation 2013. All rights reserved.**

– **U.S. Government Users Restricted Rights - Use, duplication or disclosure restricted by GSA ADP Schedule Contract with IBM Corp.**

IBM, the IBM logo, ibm.com, Rational, the Rational logo, Telelogic, the Telelogic logo, Green Hat, the Green Hat logo, and other IBM products and services are trademarks or registered trademarks of International Business Machines Corporation in the United States, other countries, or both. If these and other IBM trademarked terms are marked on their first occurrence in this information with a trademark symbol (® or ™), these symbols indicate U.S. registered or common law trademarks owned by IBM at the time this information was published. Such trademarks may also be registered or common law trademarks in other countries. A current list of IBM trademarks is available on the Web at “Copyright and trademark information” at www.ibm.com/legal/copytrade.shtml

If you have mentioned trademarks that are not from IBM, please update and add the following lines:

[Insert any special third-party trademark names/attributions here]

Other company, product, or service names may be trademarks or service marks of others.



