

IBM SolutionsConnect 2013

L'IBM TechSoftware nouvelle génération

28, 29 et 30 août
IBM Client Center Paris



#solconnect13

Transformez vos opportunités en succès



IBM SolutionsConnect 2013

L'IBM TechSoftware nouvelle génération

Introduction sur OpenPages

Stephan Molliere

2

28, 29 et 30 août - IBM Client Center Paris

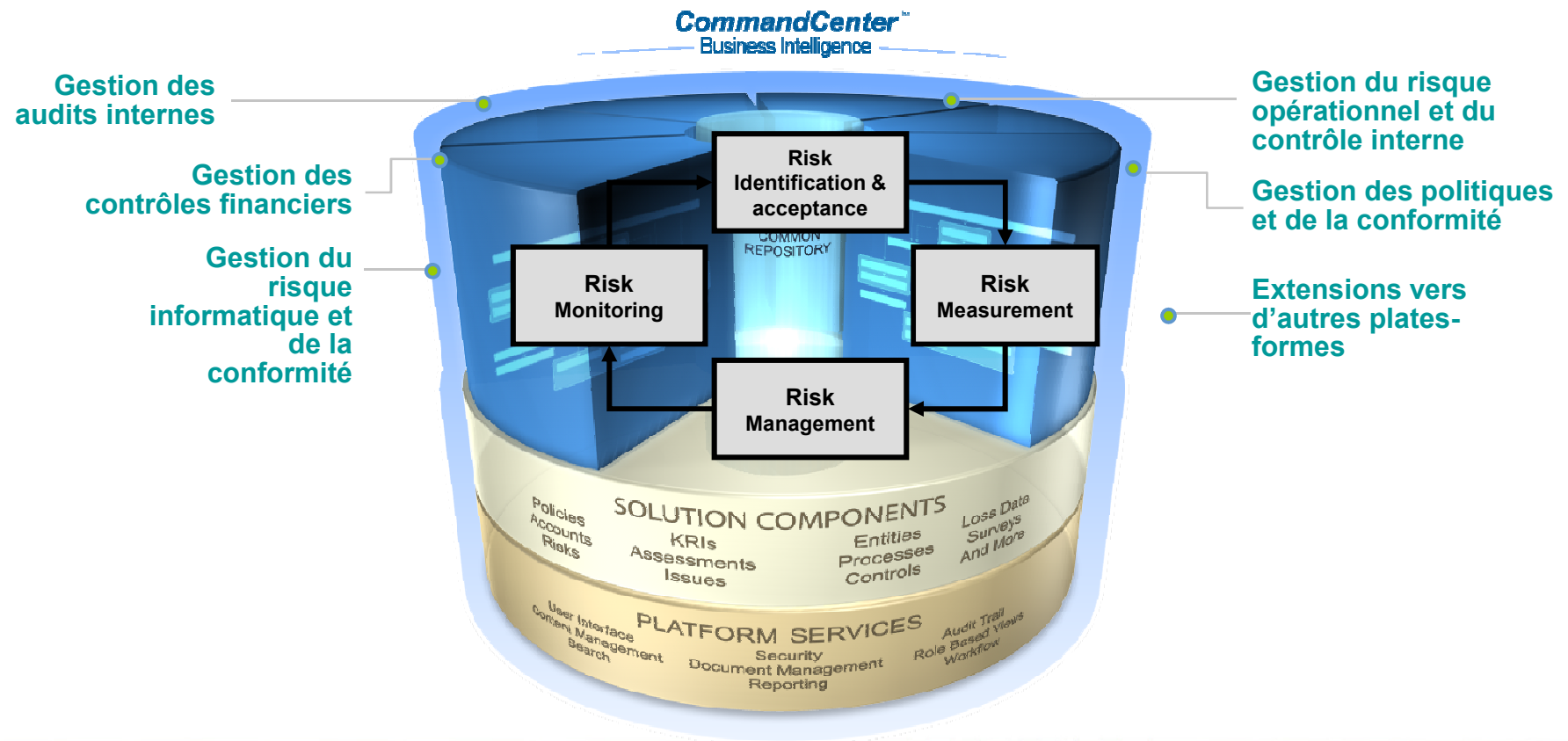
 #solconnect13



IBM SolutionsConnect 2013

L'IBM TechSoftware nouvelle génération

La plate-forme IBM OpenPages industrialise la gouvernance de la sécurité



28, 29 et 30 août - IBM Client Center Paris

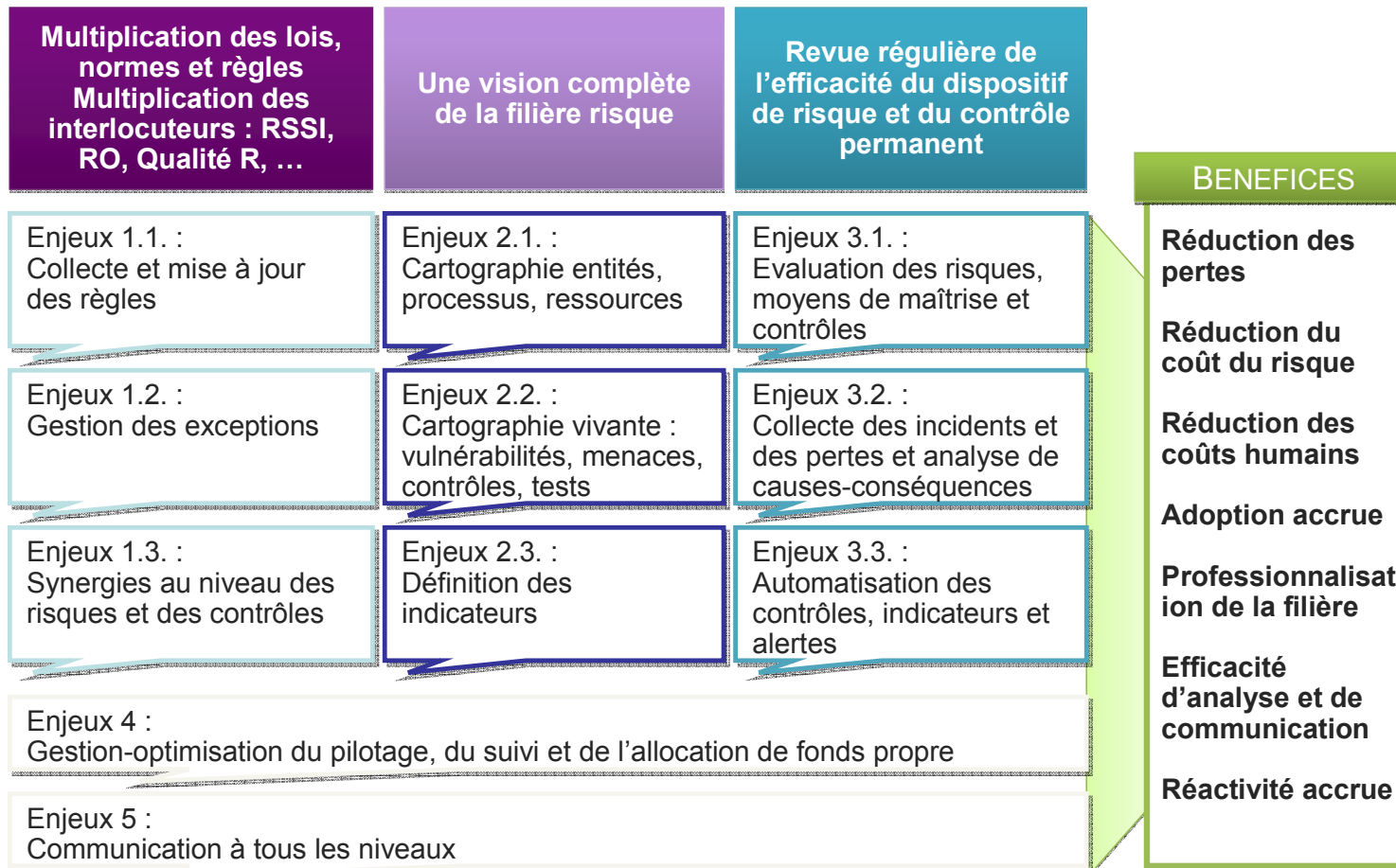
 #solconnect13



IBM SolutionsConnect 2013

L'IBM TechSoftware nouvelle génération

Une solution pour l'ensemble de la filière risque IT



28, 29 et 30 août - IBM Client Center Paris

 #solconnect13




IBM SolutionsConnect 2013

L'IBM TechSoftware nouvelle génération

Une approche intégrée pour faciliter le pilotage



28, 29 et 30 août - IBM Client Center Paris

 #solconnect13



IBM SolutionsConnect 2013

L'IBM TechSoftware nouvelle génération

Des références adaptées à vos contextes

Pilotage global de la sécurité

- Mandate
- Sub Mandate
- Waiver
- Applications
- Personnel
- Security Event
- Action Item
- KPI

Finance

Reducing the Complexity of IT Governance, Risk, and Compliance (IT GRC)

Risque Analysis / Control Design & Risk Level

Compliance: Design Test Plans, Test, Remediation

Automation: Workflows, Automation, Approvals

Administration: System of Record, Reviews, Approvals, Assessments, Archiving

Governance Report Adminis

Tommy Thompson - IT Williams Companies, Inc

Capital One - Finance

Solution: OpenPages Platform

- Convergence dans une seule palette-forme.
- Améliore le processus d'évaluation et le suivi des plans d'actions.

Bénéfices tangibles

- Elimination de 18 systèmes et \$20m de dépenses avec la consolidation des plate-formes, des données et des processus.
- La gestion des risques parties intégrante de l'activité de tous les jours
- Amélioration du pilotage

Réduction des silos

Ancien environnement de GRC

AKMS	GCS	EAF	MAP	Risk Assessmts
Archer (20 Apps)	Compliance Training	EMS	MGS	Risk Resolve
Archer (5 Apps)	CREST DB	Insight	Numerous Spreadshts	SOX Express
Auto Audit	CREST/COAF	IT Controls Catalog	Paragon	Compliance DBs (UK)
Capital Modeling	Datamart	LIMS	PRM Policies	Sprint Spreadshts

Plate-forme GRC IBM OpenPages

- Evaluation des processus de contrôle de l'entreprise
- Identification et résolution centralisées des incidents
- Reporting intégré
- Diminution des coûts
- Environnement de contrôle renforcé

28, 29 et 30 août - IBM Client Center Paris

#solconnect13



© 2011 IBM Corporation

IBM SolutionsConnect 2013

L'IBM TechSoftware nouvelle génération

Demonstration OpenPages ITG

Goissen Matthieu

28, 29 et 30 août - IBM Client Center Paris

 #solconnect13



IBM SolutionsConnect 2013

L'IBM TechSoftware nouvelle génération

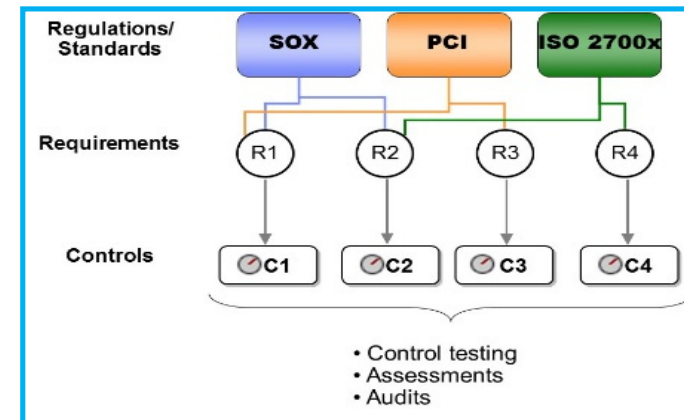
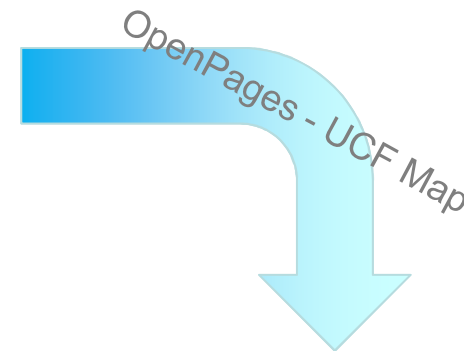
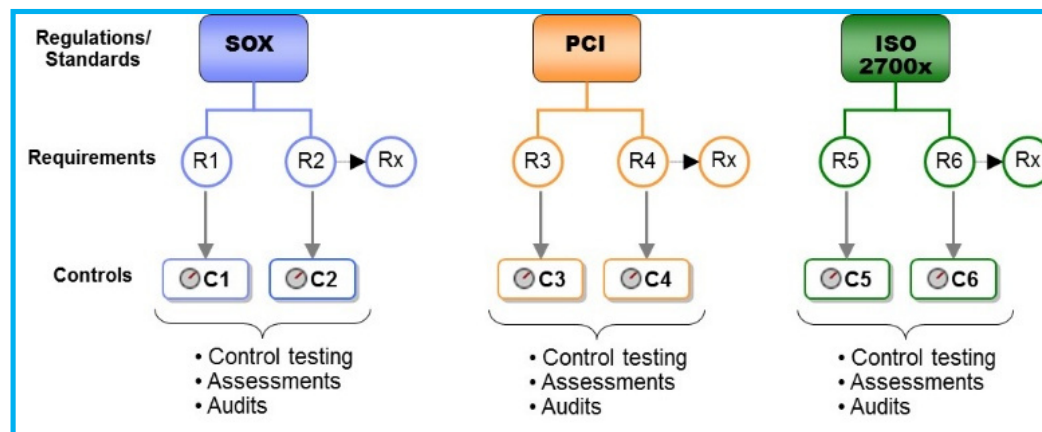
Démonstration articulée autour de 2 problématiques clients

- Comment améliorer le pilotage de ma conformité IT ?
- Comment gérer mon niveau de risque en temps réel sur l'ensemble de mon IT (cas client)?

IBM SolutionsConnect 2013

L'IBM TechSoftware nouvelle génération

Rationalisation des contrôles



9

IBM SolutionsConnect 2013

L'IBM TechSoftware nouvelle génération

Rationalisation des contrôles

The screenshot displays two side-by-side windows from the IBM SolutionsConnect application. The left window is titled "Authority Document View" and the right window is titled "Harmonized Control View".

Authority Document View:

- Menu: File, About, Authority Documents, **Harmonized Controls** (circled in red).
- Guidance Area: **Select All**, Asia and Pacific Rim, Banking and Finance, EU, Energy, General, Healthcare and Life Science, ISO, ITIL, Latin American, NASD NYSE, NIST, Other Configuration, Other European and African, Payment Card, Records Management.
- Type: **Select All**, Audit Guideline, Best Practice Guideline, Bill or Act, Contractual Obligation, International or National Standard, Regulation or Statute, Safe Harbor, Self-Regulatory Body Requirement, Vendor Documentation.
- Buttons: Clear Filters, Docs, Controls, Push Selected, Push All (circled in red).
- Content: Authority Document Results (0 items, 0 selected), Harmonized Control Results (0 items, 0 selected).

Harmonized Control View:

- Menu: File, About, Authority Documents, **Harmonized Controls** (circled in red).
- Impact Zone: **Select All**, Acquisition of facilities, technology, and ser, Application design and implementation, Audits and risk management, Human resources management for the IS st, Leadership and high level objectives, Monitoring and measurement, Operational management, Physical and environmental protection, Privacy protection for information and data, Records management, System hardening through configuration me, Systems continuity, Technical security.
- Type: **Select All**, Acquisition of Assets or Services, Actionable Reports or Measurements, Behavior, Configuration, Establish Roles, Establish/Maintain Documentation, IT Impact Zone, Monitor and Evaluate Occurrences, Process of Activity.
- Buttons: Clear Filters.

Annotations:

- A red circle highlights the "Harmonized Controls" menu item in both windows.
- A red arrow points from the "Harmonized Controls" menu in the Authority Document View to the "Harmonized Controls" menu in the Harmonized Control View.
- Text "Filtered Selection of Authority Docs by Guidance Area and Doc Type" with arrows pointing to the Guidance Area and Type lists.
- Text "Display Area of Harmonized Controls Associated to Authority Docs" with an arrow pointing to the Harmonized Control Results area.
- Text "Options and Commands for Updating Cart" with an arrow pointing to the "Push Selected" and "Push All" buttons.
- A context menu is shown over the "Export to FastMap" option in the "Cart: Authority Documents" area.

IBM SolutionsConnect 2013

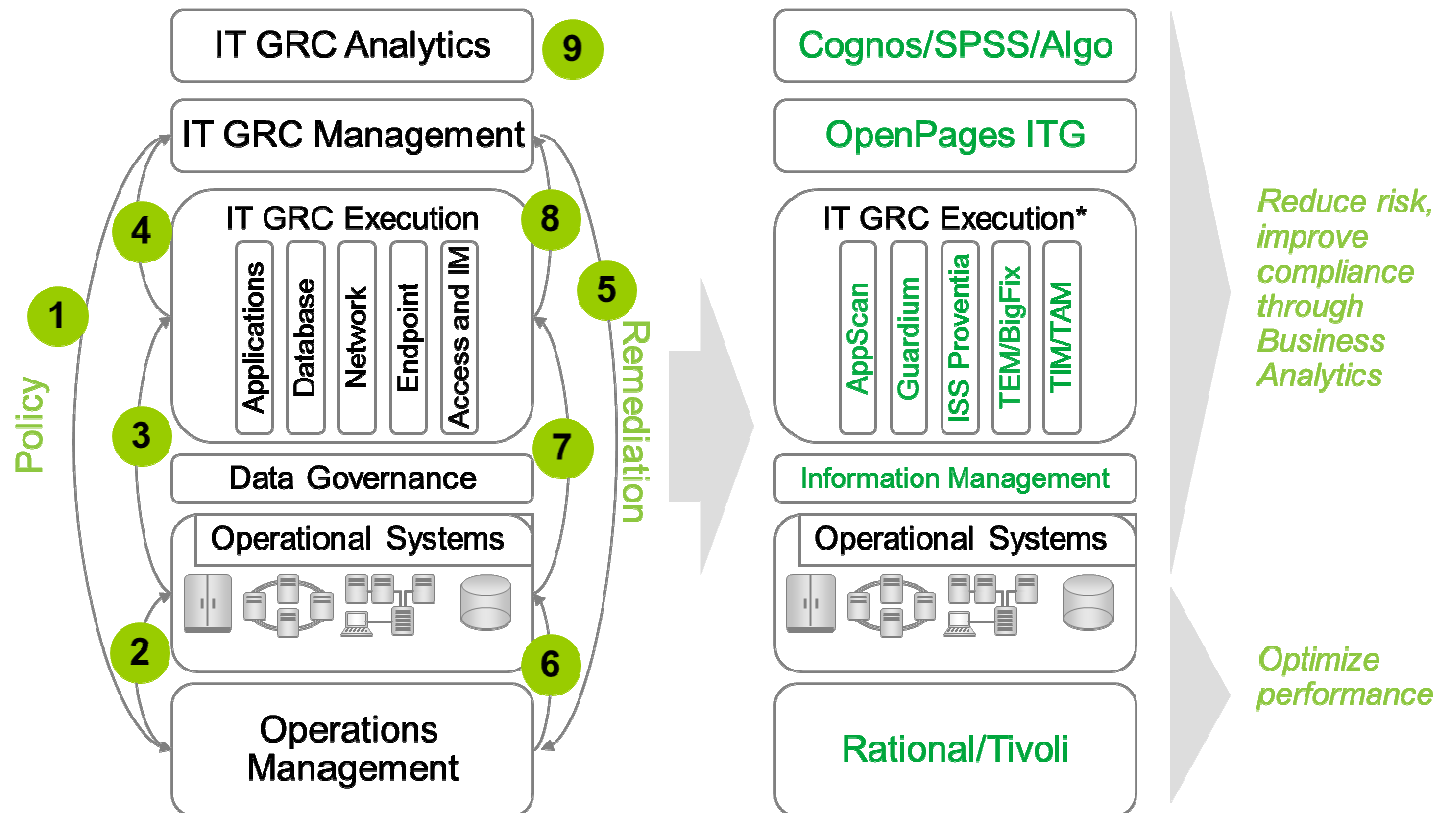
L'IBM TechSoftware nouvelle génération

Démonstration de la solution

IBM SolutionsConnect 2013

L'IBM TechSoftware nouvelle génération

Notre vision d'une approche intégrée IT GRC



*representative solutions

12

28, 29 et 30 août - IBM Client Center Paris

#solconnect13

