

# IBM SolutionsConnect 2013

L'IBM TechSoftware nouvelle génération

28, 29 et 30 août  
IBM Client Center Paris



#solconnect13

*Transformez vos opportunités en succès*



# IBM SolutionsConnect 2013

L'IBM TechSoftware nouvelle génération

## WebSphere Portal Application Development

Intégrez rapidement vos services dans vos sites multi device

avec Web Experience Factory

Franck Descollonges

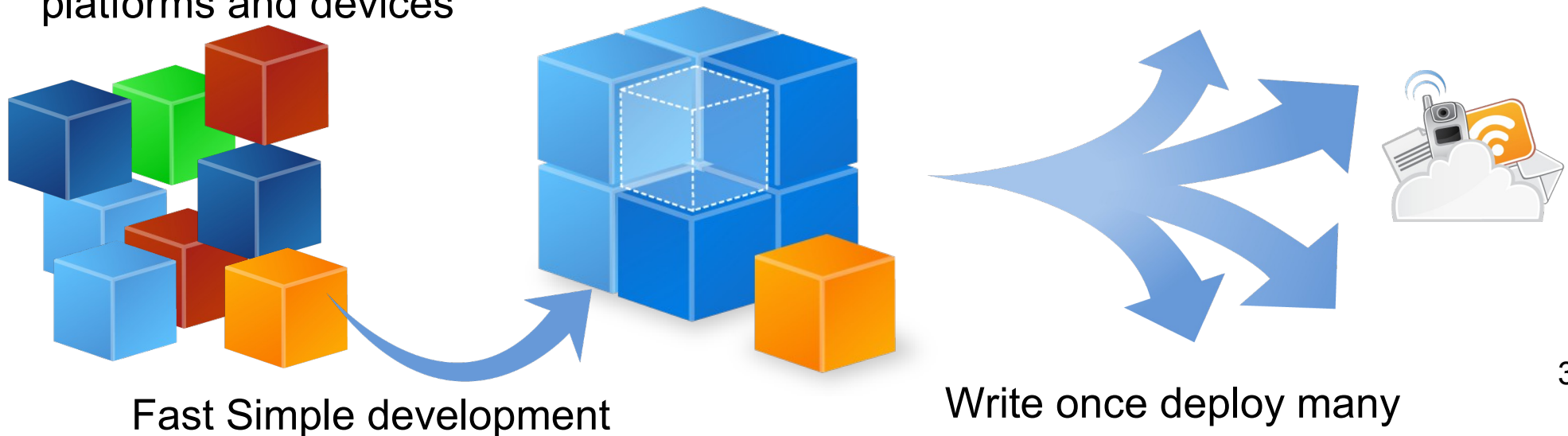
[franck\\_descollonges@fr.ibm.com](mailto:franck_descollonges@fr.ibm.com)

IBM Collaboration Solution Technical Sales



# What is Web Experience Factory?

- A **model-based IDE development tool** making it **easier and faster** than traditional coding to develop **exceptional web experiences**
- Includes **150 predefined builders** that automate design patterns and accelerate development time. Examples include:
  - Standard-based back end connectors including REST services, web services, databases
  - Connectors to proprietary systems like SAP, Peoplesoft, Siebel, Lotus Domino
  - Business logic builders for transformation and manipulation of content
  - Front end builders for building sophisticated multi-channel applications using AJAX and Dojo widgets
  - Common user interface patterns for lists, tables, forms, etc., with complete customization support
- Dynamic profiling allowing you to **write once and deploy to many** platforms and devices

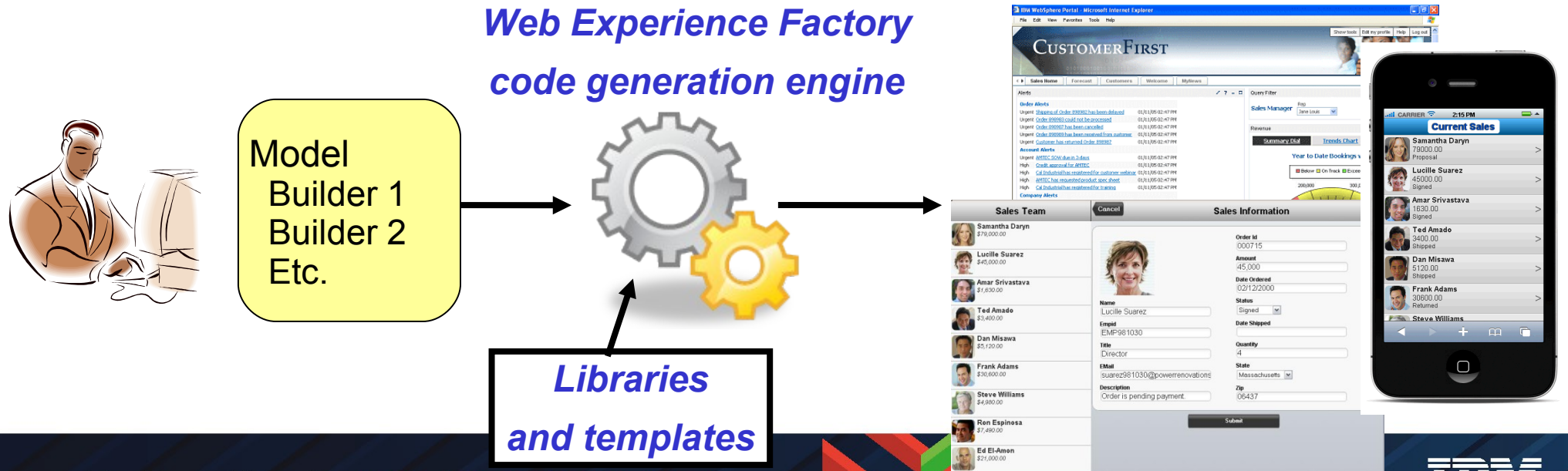




# Web Experience Factory automation of design patterns

- Web Experience Factory features a component-based development approach using *builders*
- A builder is a tool with a wizard-like UI that automates a design pattern, generating all the necessary application code and artifacts
- Builders are combined in a *model* and edited using the Web Experience Factory graphical Designer IDE

*Application code*



# Benefits of Web Experience Factory model-based automation

- *Rapid development*
  - ↳ **Quickly generate fully-functional applications** using a data-driven approach based on a service or data source
  - ↳ **Use complex technologies with no coding or learning curve**, such as AJAX and Dojo, back end data integration, mobile UI construction
  - ↳ **Customize the generated applications** using provided tools and by integrating your code and your UI designs where desired
- *Flexibility and runtime variability using Dynamic Profiling*
  - ↳ **Support mobile and multi-channel delivery** from a single source model
  - ↳ **Generate multiple variations** – for user role, geography, customer/partner, etc.
  - ↳ **Allow runtime configuration and customization** of applications
- *Automate and enforce your development standards and practices*
  - ↳ **Easily tailor the code generation framework** for your standards and practices and design patterns

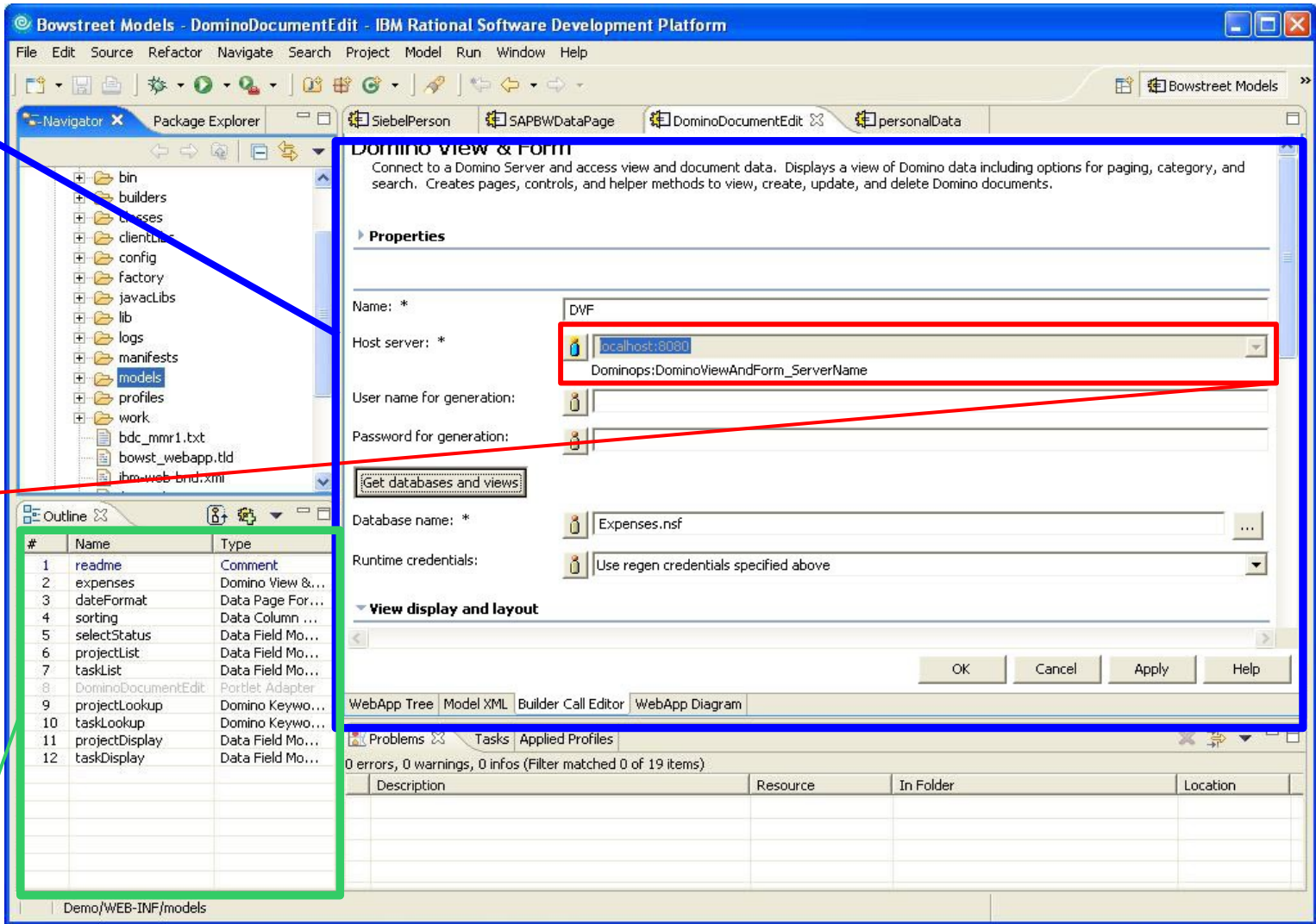


# IBM Web Experience Factory Key Concepts

**Builder**  
An adaptive, reusable component that generates Java, XML and JSP for specific portlet functionality

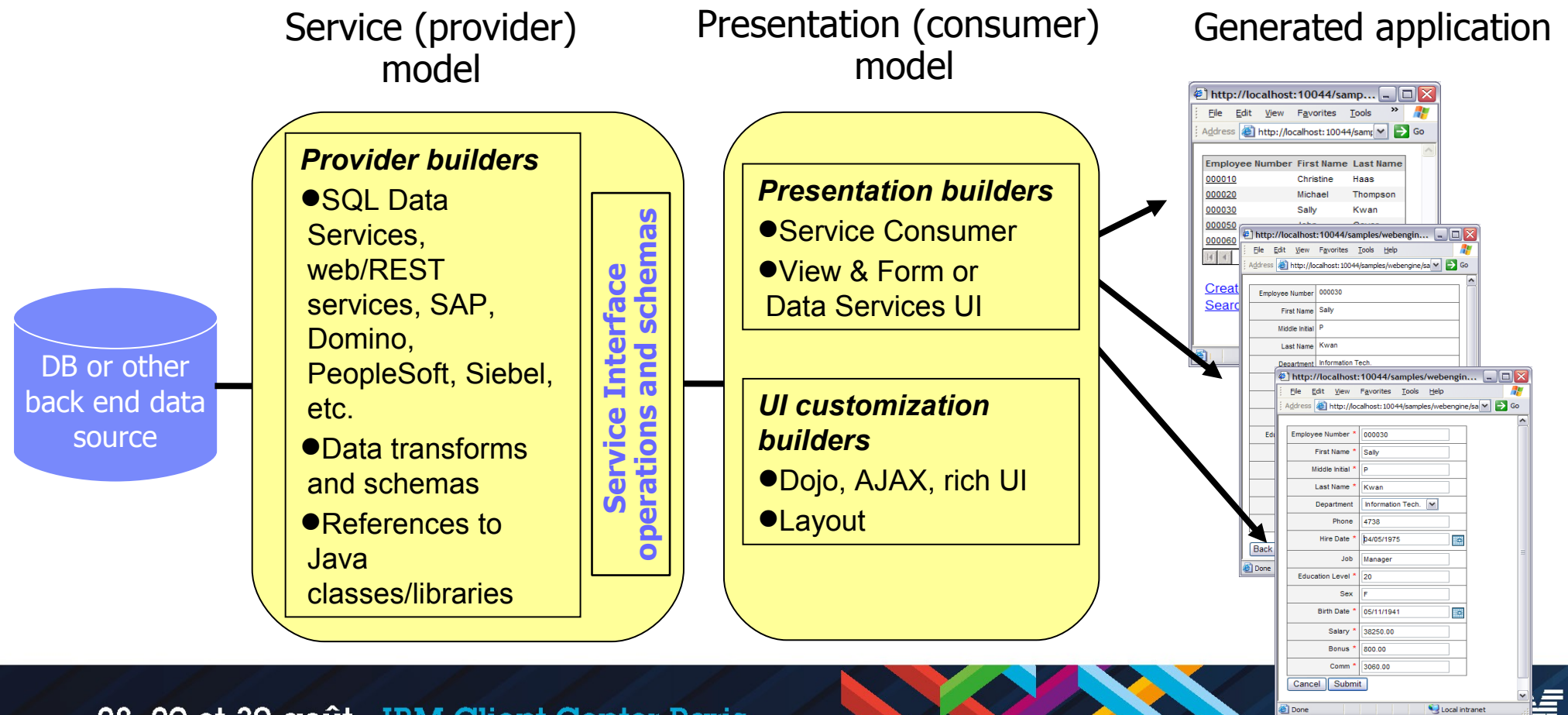
**Profile**  
A set of parameters that vary Builder inputs to dynamically generate unique versions of the portlet

**Model**  
A container of builders



# Building applications using a service architecture

- Applications are typically built using a provider/consumer service architecture
  - ↳ Gives a clean separation between UI and back end layers
  - ↳ Provides benefits such as a complete generated service test harness





# Wizard-based service generation

- Web Experience Factory data access builders can be used to easily create services
- These data access builders create common elements:
  - Schemas
  - Data Service metadata that identifies the variables and methods for operations
  - Code for executing back end functions

## SQL Data Services

Builder for automatically creating simple operations for interacting with a database before using this builder.

### Properties

Name *	<input type="text" value="pollData"/>
<input type="button" value="Fetch DataSource Names"/>	
SQL DataSource *	<input type="text" value="jdbc/sample"/>
Table Pattern	<input type="text"/>
Fetch Table Names	<input type="button" value="Fetch Entity Names"/>
Table Name *	<input type="text" value="Schema: DB2INST8; Table: POLLDATA"/>
Key Field *	<input type="text" value="ID"/>
Operations To Create	<input checked="" type="checkbox"/> List <input type="checkbox"/> Search <input type="checkbox"/> Create <input checked="" type="checkbox"/> Retrieve <input type="checkbox"/> Update

Roll your own builders! See a sample at <http://www-10.lotus.com/ldd/pfwiki.nsf/dx/making-builders>



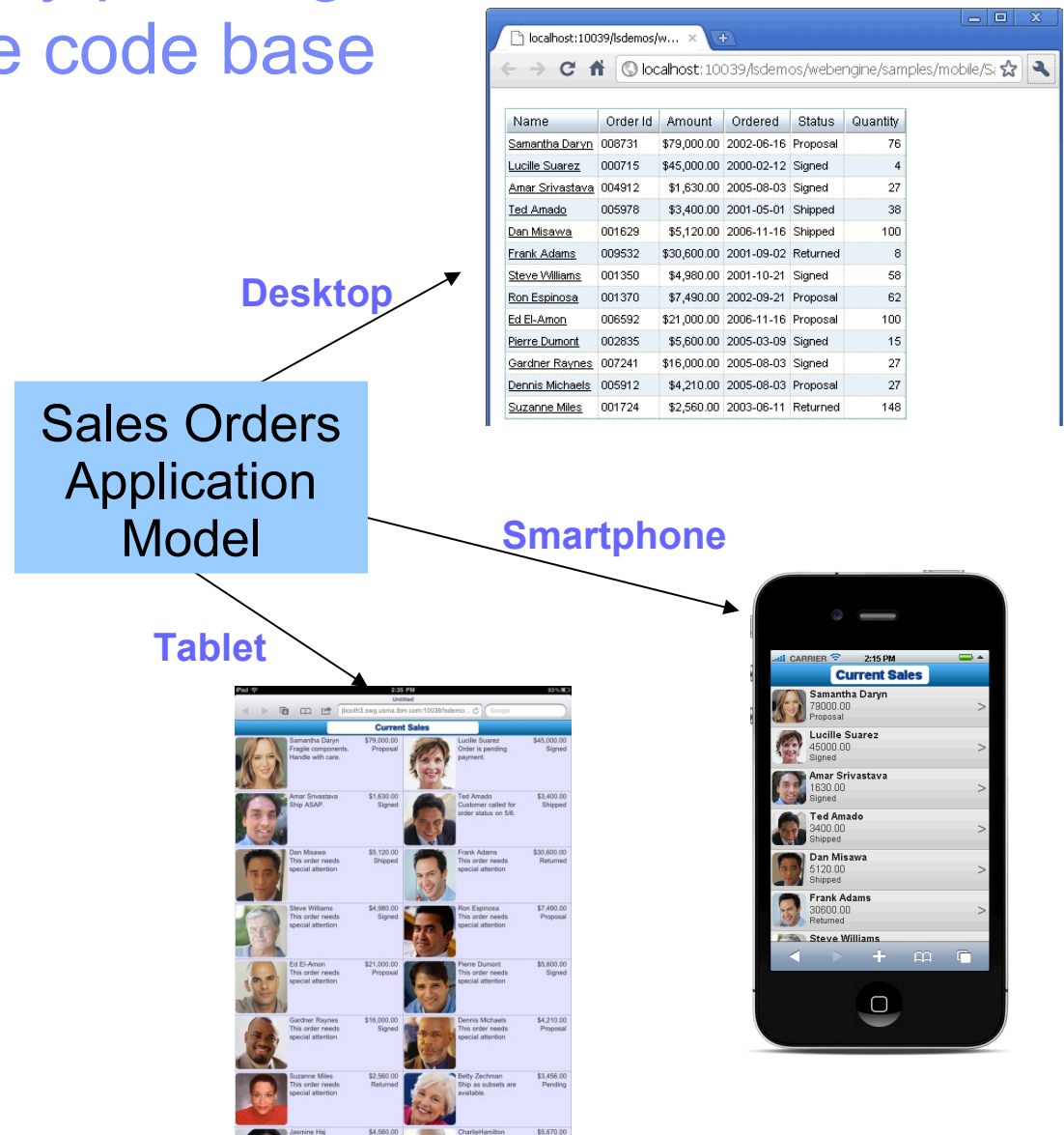
# System integration support

- Industry standard interfaces
  - ▶ Relational databases
  - ▶ Web services
  - ▶ REST services
  - ▶ EJB
  - ▶ CMIS
- ERP applications
  - ▶ SAP
  - ▶ Siebel
  - ▶ PeopleSoft
- IBM technologies
  - ▶ WebSphere Portal
  - ▶ WebSphere Process Server
  - ▶ IBM Domino
  - ▶ IBM Web Content Manager
- Standard formats
  - ▶ XML
  - ▶ JSON
  - ▶ Excel

Also call any Java class – you don't have to rewrite existing code for it to work with Web Experience Factory

# Web Experience Factory profiling enables multi-channel rendering from a single code base

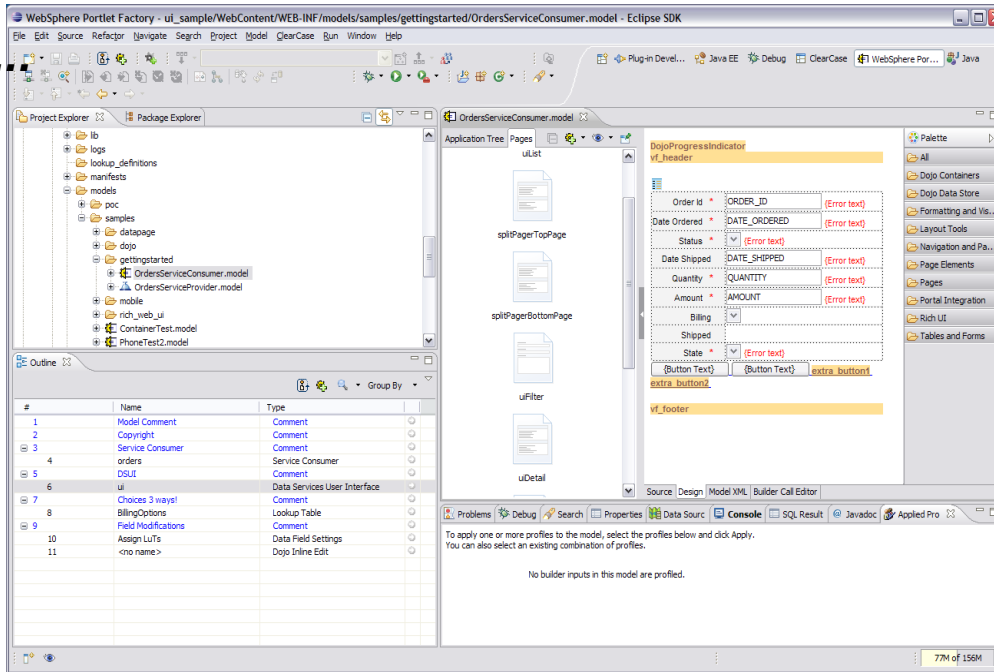
- Enables rapid creation of a single application capable of rendering in a desktop browser, smartphone, and tablet
  - ▶ Enables users to access applications via their preferred channel
  - ▶ Enables the technology organization to utilize a single development tool for desktop and mobile web application development
- Provides the ability to optimize user experience based on target device, from a single code base



# One tool – multiple platforms and devices

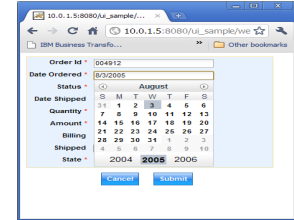
Use one common set of tools, techniques, application code (models) ...

## Web Experience Factory

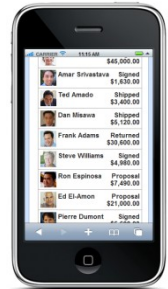


...and generate applications for multiple client devices

Desktop Browsers



Smartphones



Tablets



...deploy to multiple platforms...



WebSphere Portal



WebSphere Application Server





# IBM SolutionsConnect 2013

L'IBM TechSoftware nouvelle génération

## Démonstration

28, 29 et 30 août - IBM Client Center Paris



#solconnect13



Google search results for 'nexus' on www.google.fr. The search bar contains 'nexus' and the results show 'Shopping' with approximately 21,900 results. The user is identified as 'Franck Descollonges'.

Product listing for 'Google Nexus 7 32 Go'. Price: 235 €. Location: dans 3 magasins. Rating: 4.5 stars (19 avis). Description: 1 Go de Mémoire - Tegra 3 - 7" IPS TFT - 340 g.

```
<?xml version="1.0" encoding="UTF-8"?>
<feed gd:kind="shopping#products" gd:etag=""PD8t7dJOzTRP84TVy1Vp1S53cHc/97L009ycbfqZXiWq54Gaq5Ij0TY&quot;" xmlns="http://www.w3.org/2005/Atom"
xmlns:gd="http://schemas.google.com/g/2005" xmlns:openSearch="http://a9.com/-/spec/opensearchrss/1.0/" xmlns:s="http://www.google.com/shopping/api/schemas/2010">
<id>tag:google.com,2010:shopping/products</id>
<updated>2013-08-29T15:06:45.625Z</updated>
<title>Shopping Products</title>
<link rel="http://schemas.google.com/g/2005#feed" type="application/atom+xml" href="https://www.googleapis.com/shopping/search/v1/public/products?alt=atom"/>
<link rel="self" type="application/atom+xml" href="https://www.googleapis.com/shopping/search/v1/public/products?country=FR&q=nexus&alt=atom"/>
<link rel="next" type="application/atom+xml" href="https://www.googleapis.com/shopping/search/v1/public/products?country=FR&q=nexus&startIndex=26&alt=atom"/>
<openSearch:totalResults>29083</openSearch:totalResults>
<openSearch:startIndex>1</openSearch:startIndex>
<openSearch:itemsPerPage>25</openSearch:itemsPerPage>
<s:currentItemCount>25</s:currentItemCount>
<entry gd:kind="shopping#product">
<id>tag:google.com,2010:shopping/products/6790463/6903793944654352229</id>
<author>
<name>Google</name>
</author>
<published>2013-08-06T20:29:17.000Z</published>
<updated>2013-08-28T00:27:09.000Z</updated>
<title>Nexus 10 - 16GB</title>
<content type="text">La Nexus 10 est la toute dernière tablette de Google. Équipée de l'écran garantissant la plus haute résolution au monde pour une tablette et offrant de nouvelles fonctionnalités multi-utilisateurs, des contenus immersifs en HD et les meilleures applications Google, la Nexus 10 sait faire le bonheur de tous.
```

28, 29 et 30 août - IBM Client Center Paris

#solconnect13



GoogleShoppingDemo.model

GoogleShoppingDemo\_internal

## REST Service Call

This Builder allows you to integrate with REST style service calls.

▶ **Properties**

Name \*

HTTP Request Type  GET  POST  PUT  DELETE

URL

Extract Parameters

Parameters

Name	Value
key	AIzaSyC0ScmDKr1gma3hfNLUOH0ST7wuhm1xz2U
country	
q	
alt	atom

User Name

Password

Ignore Results

▼ **Results Schema**

Auto Create Schema

Restructure Feed Data

[Show design view](#)

Source Design Model XML Builder Call Editor



GoogleShoppingDemo.model

GoogleShoppingDemo\_internal false

## Data Layout

Modifies a Data Page layout using a specified data layout template.

► **Properties**

Name   
mobile\_devicetype\_base:MobileDevice

Container Field \*

[Layout Template \\*](#)

This layout is used for lists that contain thumbnails. There are four base layouts that you select by selecting a style sheet. These style sheets control the size of the image and the height of the list item. The layout is designed to be responsive, when used on a phone in the portrait orientation the values in the right column are hidden and the center columns are expanded to use that space. The theme setting when using the new feature pack theme, will use a small thumbnail layout when on a phone and a medium thumbnail layout in all other cases. There are alternate layouts that you create by setting the container\_layout style on the container layout. Style sheet files that end in uitheme.css use styles that are defined in the themes css file.

► Use Theme

[Style Sheet File](#)

Move Details Link to Row

▼ **Data Layout**

Map the target element locations to a data field, or data field label. A target element can have more than one data field associated with it. If the value is left blank a named target location will be added to the layout.

Data Layout

Name	Value	Style		
<input type="text" value="left_image"/>	<input type="text" value="image_link"/>		<input type="text" value="..."/>	<input type="text" value="↑"/> <input type="text" value="↓"/>
<input type="text" value="center_column_styles"/>			<input type="text" value="..."/>	<input type="text" value="↑"/> <input type="text" value="↓"/>

[Show design view](#)

Source Design Model XML Builder Call Editor

Web Experience Factory - GoogleShopping/WebContent/WEB-INF/models/GoogleShoppingDemo.model - Eclipse SDK

File Edit Source Refactor Navigate Search Project Model Run Window Help

Project Explorer: GoogleShopping, Deployment Descriptor: GoogleSh..., Java Resources, models, GoogleShoppingDemo.model, portlet models, JavaScript Resources, profiles, WebContent

Application Tree: GoogleShoppingDemo\_InputPage, GoogleShoppingDemo\_ViewPage, GoogleShoppingDemo\_DetailsPage

Profile Set: mobile\_devicetype\_base, Profile: Browser

Design View: DojoProgressIndicator, vf\_header, search\_section, title, brand, published, price\_string, currency, availability, Back, update\_button, extra\_button1, extra\_button2, create\_button, vf\_footer

Outline Table:

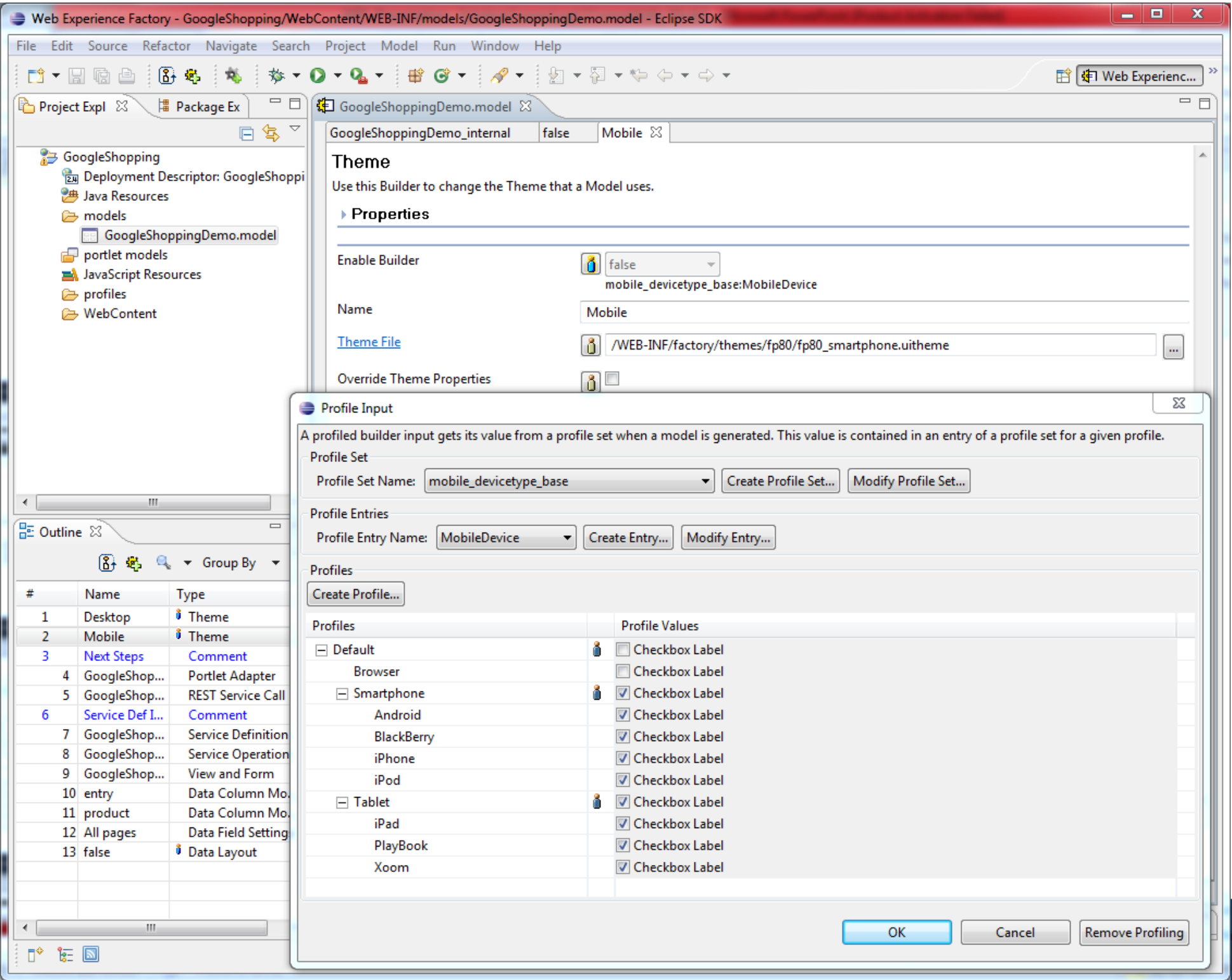
#	Name	Type
1	Desktop	Theme
2	Mobile	Theme
3	Next Steps	Comment
4	GoogleShop...	Portlet Ad...
5	GoogleShop...	REST Servi...
6	Service Def I...	Comment
7	GoogleShop...	Service De...
8	GoogleShop...	Service O...
9	GoogleShop...	View and ...
10	entry	Data Colu...
11	product	Data Colu...
12	All pages	Data Field ...
13	false	Data Layout

Problems Web Experience Factory Web Resources Applied Profiles Properties

To apply one or more profiles to the model, select the profiles below and click Apply. You can also select an existing combination of profiles.

Profile Set: mobile\_devicetype\_base, Profile: Browser, Apply

Existing Combinations: Default, Manage Combinations





GoogleShoppingDemo.model

Application Tree Pages

- GoogleShoppingDemo\_InputPage
- GoogleShoppingDemo\_ViewPage
- GoogleShoppingDemo\_DetailsPage

Profile Set: mobile\_devicetype\_base Profile: Browser

DojoProgressIndicator

---

vf\_header

search\_section

{text} {text} 1 ... , ... {text} | {text}

<input type="checkbox"/>	title	price_string
	brand	currency
	published	availability

---

Back update\_button extra\_button1 extra\_button2

create\_button

GoogleShoppingDemo.model

Application Tree Pages

- GoogleShoppingDemo\_InputPage
- GoogleShoppingDemo\_ViewPage
- GoogleShoppingDemo\_DetailsPage

Profile Set: mobile\_devicetype\_base Profile: Smartphone

vf\_header

search\_section

<input type="checkbox"/>	title	price_string
	brand	currency
	published	availability

---

< >

Back

extra\_button1 extra\_button2




create\_button

---

vf\_footer

http://localhost:10039/GoogleShopping/webengine/GoogleSh...





1 - 4 of 25 Page 1 | 2 | 3 | 4 | 5 | 6 ... 7 Previous | Next

	Nexus 10 - 16GB ASUS 2013-08-06T20:29:17.000Z	399.0 EUR inStock
	Nexus 4 - 16GB LG 2013-08-06T20:29:17.000Z	349.0 EUR inStock
	Nexus 10 - 32GB ASUS 2013-08-06T20:29:17.000Z	499.0 EUR inStock
	Nexus 4 - 8GB LG 2013-08-06T20:29:17.000Z	299.0 EUR inStock

Show 4 items ▾ Jump to page 1 of 7 Previous | Next

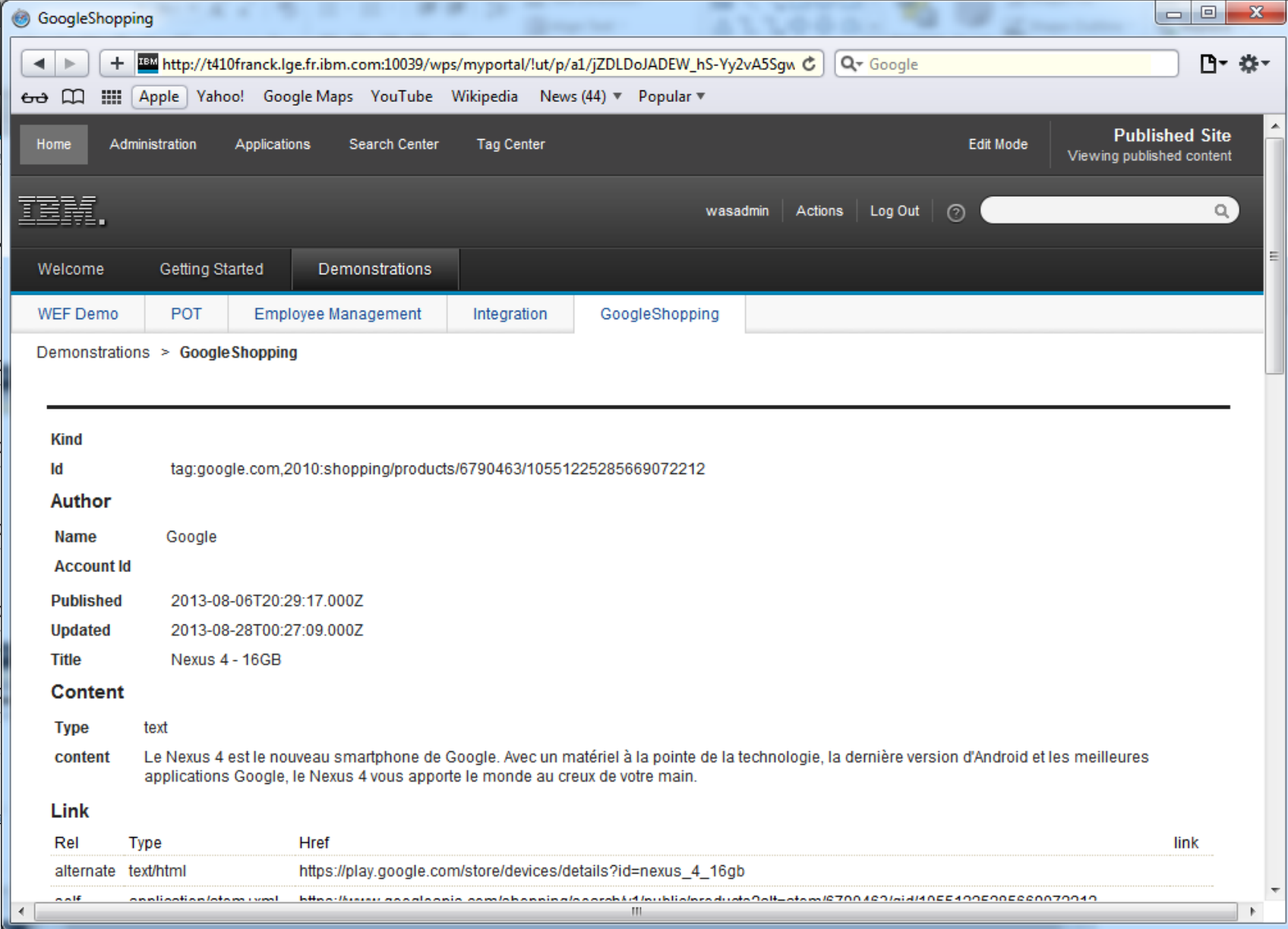
Back

http://localhost:10039/GoogleShopping/webeng...





	Nexus 10 - 16GB ASUS 2013-08-06T20:29:17.000Z	399.0 EUR inStock
	Nexus 4 - 16GB LG 2013-08-06T20:29:17.000Z	349.0 EUR inStock
	Nexus 10 - 32GB ASUS 2013-08-06T20:29:17.000Z	499.0 EUR inStock
	Nexus 4 - 8GB LG 2013-08-06T20:29:17.000Z	299.0 EUR inStock

< >

Back



Demonstration > GoogleShopping

	Nexus 10 - 16GB ASUS 2013-08-06T20:29:17.000Z	399.0 EUR inStock
	Nexus 4 - 16GB LG 2013-08-06T20:29:17.000Z	349.0 EUR inStock
	Nexus 10 - 32GB ASUS 2013-08-06T20:29:17.000Z	499.0 EUR inStock
	Nexus 4 - 8GB LG 2013-08-06T20:29:17.000Z	299.0 EUR inStock

Back

<b>Aide</b>	<b>Support</b>	<b>Recherche et exploration</b>
Documentation du produit	Page de support	Centre de recherche
Wiki produit	Configurations matérielles et logicielles prises en charge	Etiquetage et évaluation
Galerie des supports		
Zone de WebSphere Portal	IBM Software Support Guide	

**Inventories**

**Inventory**

**Channel**  
online

**Availability**  
inStock

**Price**

**Shipping**  
9.99

**Currency**  
EUR

**Original Price**

**price**  
349.0

**Images**

Link	Status	image
	available	

Gtin  
Gtins  
Gtin

Back

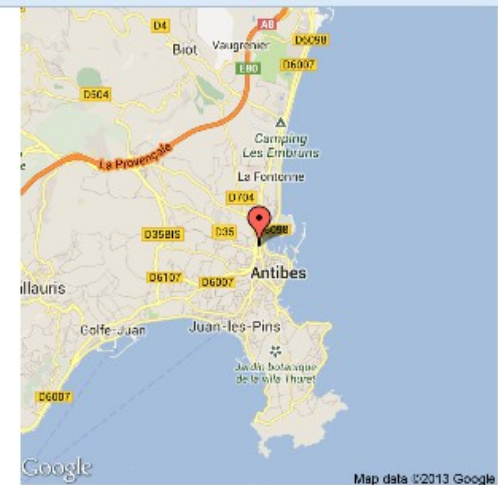
<b>Aide</b>	<b>Support</b>	<b>Recherche et exploration</b>
Documentation du produit	Page de support	Centre de recherche
Wiki produit	Configurations matérielles et logicielles prises en charge	Etiquetage et évaluation
Galerie des supports		
Zone de WebSphere Portal	IBM Software Support Guide	



81 - 90 of 3,021 Page 1 ... 8 | 9 | 10 | 11 | 12 ... 303 Previous Next

- Antibes [Masquer](#)
- Uic **Coordonnées**  
757674 43.58588  
Gare Ferroviaire de Voyageurs 7.11942
- Anvin [Détails](#)
- Anzeling [Détails](#)
- Apach [Détails](#)
- Appilly [Détails](#)
- Arbanats [Détails](#)
- Arbois [Détails](#)
- Arc et Senans [Détails](#)
- Arcachon [Détails](#)
- Arches [Détails](#)

Show 10 items Jump to page 9 of 303 Previous Next



**Airbus All news**

Airbus and S7 Engineering to develop strategic A320 maintenance training partnership in Russia

... Airbus Launch Russian Sustainable fuels

... Aerolia celebrate 500th ship-set from production

... U.S. A320 Family final assembly ready to take shape

... VSMPO-AVISMA to reinforce partnership

... 5 of 25 stories 1 | 6 | 11 | 16 |

6 - 10 of 23 Page 1

- Nice-Ville - Strasbourg
- Hendaye - Nice-Ville
- Cannes-la-Bocca - Ventimiglia
- Grasse - Ventimiglia-Stazione
- Les Arcs-Dranguignan - Ventimi

Line Name	Grasse - Ventimiglia-Stazione
Line External Code	OCETrain TER-87757724-83045013
<b>Mode Type</b>	
Mode Type Name	Train TER
<b>Network</b>	
Network Name	SNCF
<b>Forward</b>	
Forward Name	Grasse vers Ventimiglia-Stazione
<b>Backward</b>	
Backward Name	Ventimiglia-Stazione vers Grasse

Back

Demonstration > Intégration

---

**Antibes**

Uic	Coordonnées
757674	43.58588
Gare Ferroviaire de Voyageurs	7.11942

[Anvin](#)  
[Anzeling](#)  
[Apach](#)  
[Appilly](#)  
[Arbanats](#)  
[Arbois](#)  
[Arc et Senans](#)  
[Arcachon](#)  
[Arches](#)

< >

-  **Bordeaux-St-Jean - Nice-Ville** SNC
-  **Nice-Ville - Toulouse-Matabiau** SNC
-  **Nice-Ville - Paris-Austerlitz** SNC

**Antibes** [Masquer](#)

Uic	Coordonnées
757674	43.58588
Gare Ferroviaire de Voyageurs	7.11942

[Anvin](#) [Détails](#)  
[Anzeling](#) [Détails](#)  
[Apach](#) [Détails](#)  
[Appilly](#) [Détails](#)  
[Arbanats](#) [Détails](#)  
[Arbois](#) [Détails](#)  
[Arc et Senans](#) [Détails](#)  
[Arcachon](#) [Détails](#)  
[Arches](#) [Détails](#)

< >

---

**Line Name**  
Cannes - Ventimiglia-Stazione

**Line External Code**  
OCETrain TER-87757625-83045013

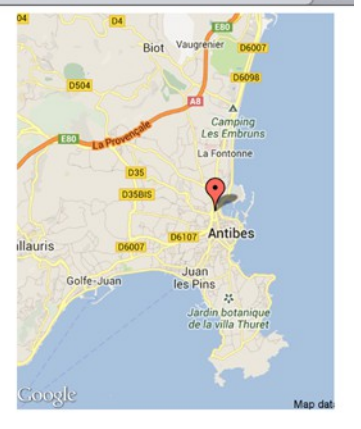
**Mode Type**  
Mode Type Name  
Train TER

**Network**  
Network Name  
SNCF

**Forward**  
Forward Name  
Cannes vers Ventimiglia-Stazione

**Backward**  
Backward Name  
Ventimiglia-Stazione vers Cannes

Back



**Airbus All news**

- Airbus and S7 Engineering to develop strategic A320 maintenance training partnership in Russia
- Rostec and Airbus Launch Russian Sustainable Aviation Fuels
- Airbus and Aerolia celebrate 500th ship-set from Irkut Corporation
- Airbus' new U.S. A320 Family final assembly facility is ready to take shape
- Airbus and VSMPO-AVISMA to reinforce partnership

Showing 1 - 5 of 25 stories | 1 | 6 | 11 | 16 | 21 next