

# A Fresh Look at the Mainframe

The New Face of Mainframe Operations

## On Demand Insurance CIO Needs to Satisfy Service Levels

I must make sure to meet my service level commitments. With these new applications, it's more important than ever, but the CEO won't increase my budget for operations



**On Demand Insurance  
CIO**

IBM Tivoli can help,  
without adding staff

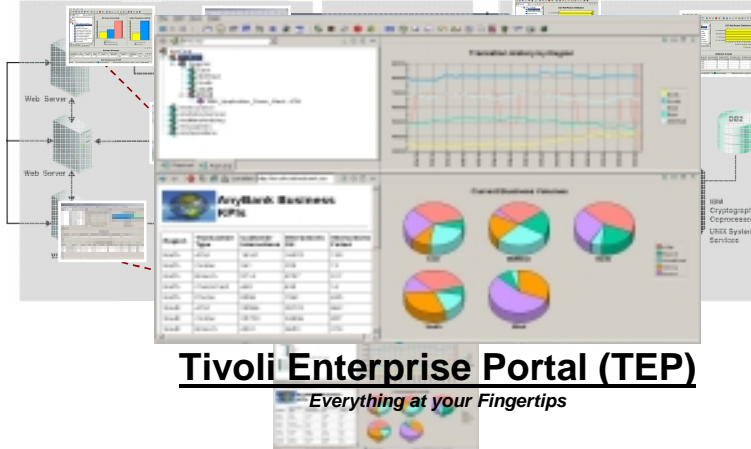


**IBM**

# A Complete View of IT Infrastructure Operation

*One view through one portal to monitor the overall health of the infrastructure*

**IBM Tivoli Monitoring (Distributed) ITCAM IBM Tivoli OMEGAMON XE (System z)**



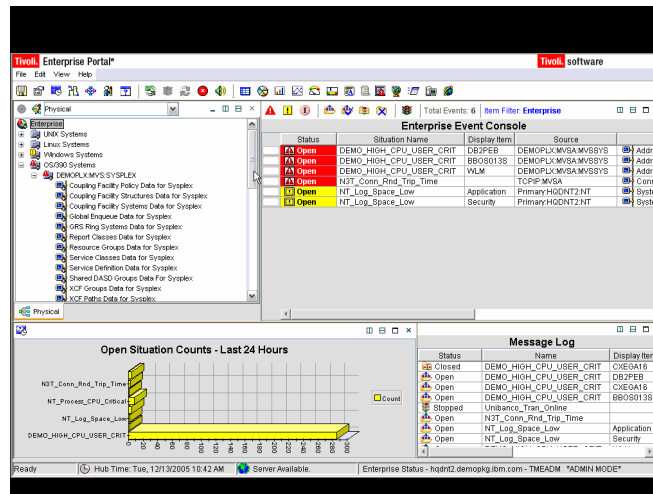
## Tivoli Enterprise Portal (TEP)

*Everything at your Fingertips*

05 - Service Management v3.5.ppt

3

# DEMO: Tivoli Enterprise Portal (TEP)



*A Dynamic Role-based Portal for Integrating IT Operations*

05 - Service Management v3.5.ppt

4

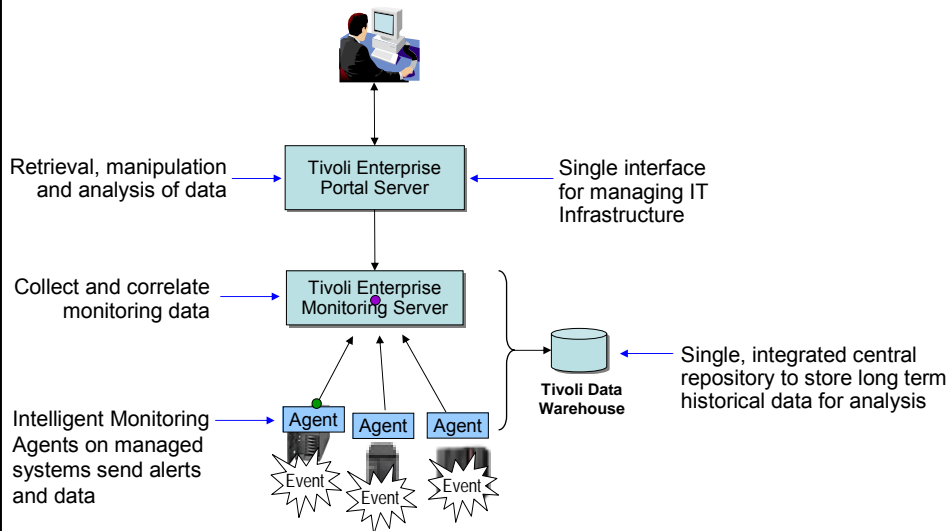
## Tivoli Enterprise Portal (TEP) A Dynamic Role-based Portal for Integrating IT Operations

- A common user interface makes operations management across all platforms easier
- TEP is used to display information from IBM Tivoli solutions, including:
  - ▶ IBM Tivoli OMEGAMON family; IBM Tivoli Monitoring (ITM) family; IBM Tivoli Composite Application Manager (ITCAM) family; IBM Tivoli Workload Scheduler family
- Integrated end-to-end monitoring allows for fast resolution of complex problems quickly and easily
- Using TEP, it is easy to create customized role-based views of the enterprise
  - ▶ Workspaces for operators, Systems Programmers, Application Programmers, Network Administrators, and IT Management

05 - Service Management v3.5.ppt

5

## Comprehensive Monitoring Services

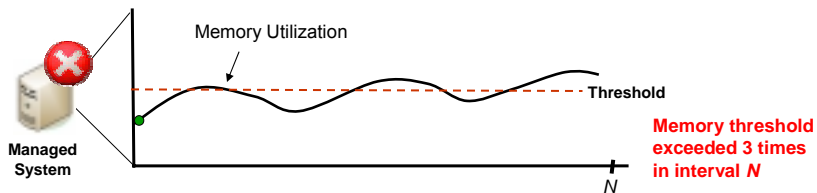


05 - Service Management v3.5.ppt

6

## Define Situations that Indicate Abnormal Operations

- Agents send **metrics** to the Monitoring Server
  - ▶ Examples: CPU usage, Disk usage, memory usage
- Operators define threshold values for metrics by specifying **conditions**
- Operators define **situations** that contain one or more conditions to test
  - ▶ When all conditions are met, the situation causes an alert
  - ▶ Management agents come with pre-defined situations that can be modified or extended

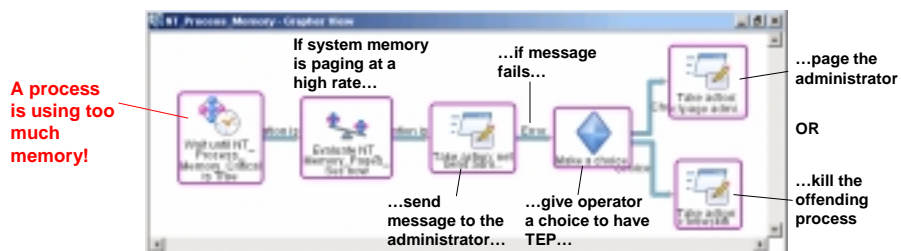


05 - Service Management v3.5.ppt

7

## Automate Responses Using Policies

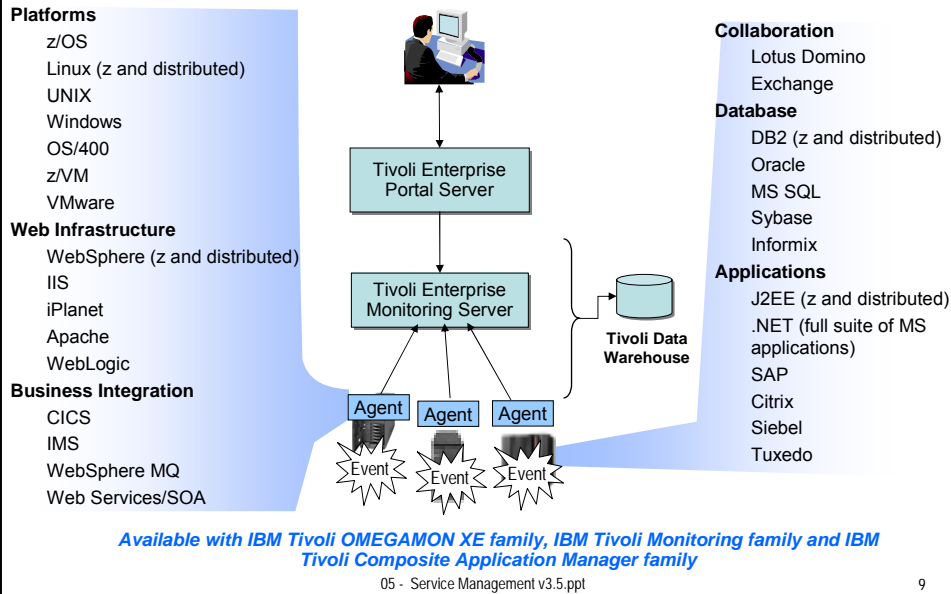
- A **policy** comprises a series of automated steps called *activities* that are connected to create a workflow
  - ▶ Policies perform actions, schedule work, and automate manual tasks
  - ▶ Policies can be fully-automated or require user intervention
    - Allows operator intervention and decision-making
- Use the **Workflow Editor** to create and manage automated response policies



05 - Service Management v3.5.ppt

8

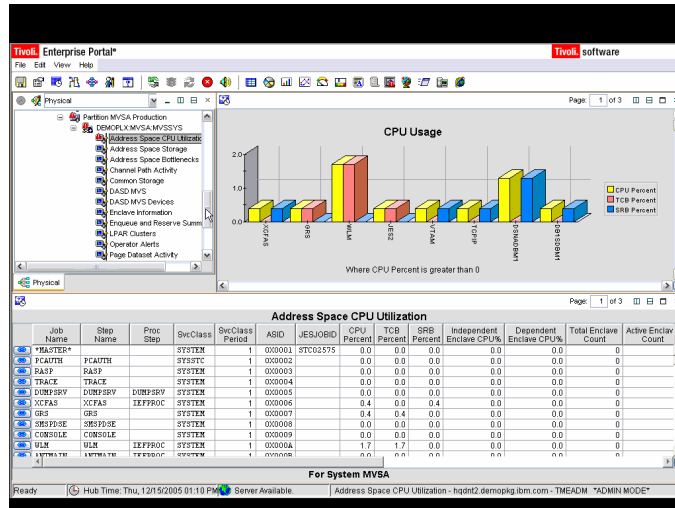
# Integrated End-to-End Monitoring with IBM Tivoli



## Monitor z/OS with IBM Tivoli OMEGAMON XE on z/OS

- Monitor key resources – CPU, LPARs, I/O, enqueue, paging, and others
- Manage and tune Workload Manager service classes
- Monitor Parallel Sysplex environments, such as Coupling Facility status and related resource metrics
- Real-time performance metrics for IBM Cryptographic Coprocessors
- zAAP processor usage and reporting for Java workloads
- Processor usage and reporting for zIIP (introduced on System z9)
- Predefined, customizable out-of-the-box automation situations
- Expert advice explains alerts and offers potential fixes
- Dynamic workspace linking to other OMEGAMON XE products

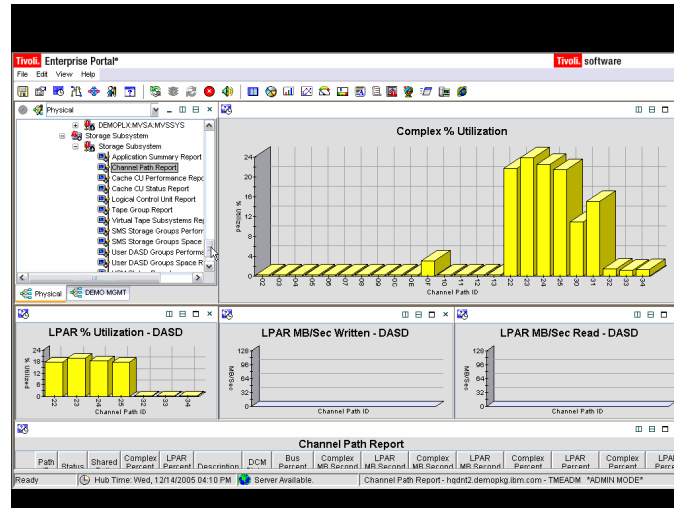
## DEMO: Monitor z/OS with IBM Tivoli OMEGAMON XE



## Manage Networks with IBM Tivoli OMEGAMON XE for Mainframe Networks and IBM Tivoli NetView for z/OS

- Manage VTAM sessions and TCP/IP connections from a single integrated interface
- Provides detailed analysis of TCP/IP connections that are slow, unstable, or down
- Measures application throughput rate and generates alerts if it increases over the baseline
- Measures transaction round-trip time, round-trip variance time, and other key metrics which provide a picture of end-user performance
- Automatic trouble ticket creation using IBM Tivoli Information Management for z/OS and Peregrine ServiceCenter

## DEMO: Network Monitoring with IBM Tivoli OMEGAMON XE and IBM Tivoli NetView for z/OS



05 - Service Management v3.5.ppt

13

## Monitor CICS systems with IBM Tivoli OMEGAMON XE for CICS on z/OS

- Monitor transaction resource usage and performance
- Identify tasks waiting for specific resources and pinpoint excessive wait times
- Monitor Java applications using the Java Virtual Machine (JVM) in CICS in addition to CICS dispatcher and TCP/IP connection
- Monitor Virtual Storage Access Method (VSAM) files and identifies record level sharing lock contention
- Correlate CICS log streams with associated facility structure to fine-tune CICS systems
- Correlate DB2 threads with CICS transactions to enable quicker problem identification and resolution

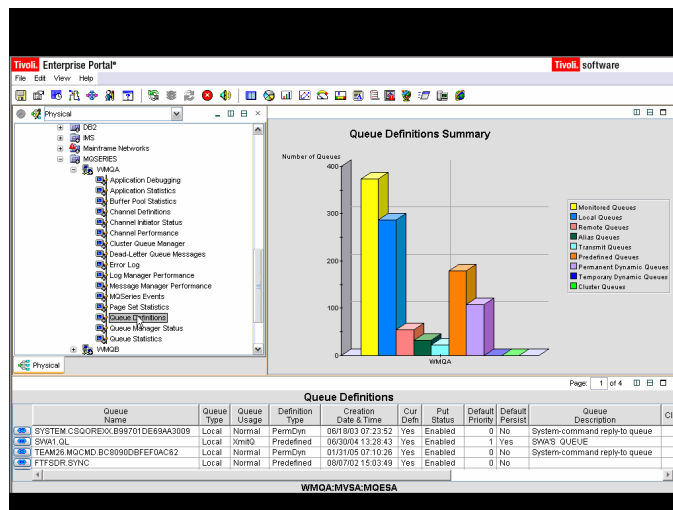
05 - Service Management v3.5.ppt

14

# Monitor DB2 Performance with IBM Tivoli OMEGAMON XE for DB2 PM/PE on z/OS

- Monitor, analyze and tune the performance of IBM DB2 Universal Database and IBM DB2 applications
- Monitor threads, I/O, buffer pools, and SQL cache
- Monitor interaction of DB2 with CICS, IMS, and batch processes
- Monitor DB2 Connect and track communication between DB2 Connect and host thread
- Provides in-depth analysis with a wide range of detailed, customizable reports

# DEMO: Monitor DB2 Performance with IBM Tivoli OMEGAMON XE





## The Value to A Real Customer

### A Case Study – Large European Financial Services Company

- Migrated from BMC system management tools to IBM Tivoli OMEGAMON XE family
- Benefits
  - ▶ The Tivoli applications offer a richer set of features that have led to several benefits, including the following:
    - **10 percent increase in availability**
    - **30 percent reduction in I/T costs**
    - **20 percent improvement in I/T staff productivity**
  - ▶ I/T staff can typically detect problems before they even occur and take the needed steps to prevent them. This has resulted in increased system availability for the entire company and has led to improved customer service.

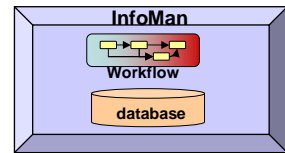
## Incident Management

Did you know that you can link OMEGAMON to **IBM Tivoli Information Management for z/OS (InfoMan)** for trouble ticketing...

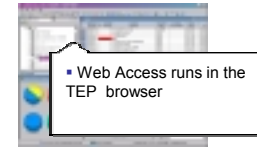


## Incident Management with IBM Tivoli Information Management for z/OS (InfoMan)

- Automatic incident creation from IBM Tivoli OMEGAMON and IBM Tivoli NetView
- Problem entry, assignment, notification, tracking and escalation
- Change request tracking and approval
- Several web options including IBM Tivoli Web Access for InfoMan and utilities to integrate with customer built applications
- IBM Tivoli Web Access for InfoMan can be accessed from TEP
- InfoMan and IBM Tivoli Web Access for InfoMan offer blackberry support for viewing information and approvals



OMEGAMON from TEP



## Monitoring Web Services

How about monitoring newer applications based on Web services/SOA?



On Demand Insurance  
CIO

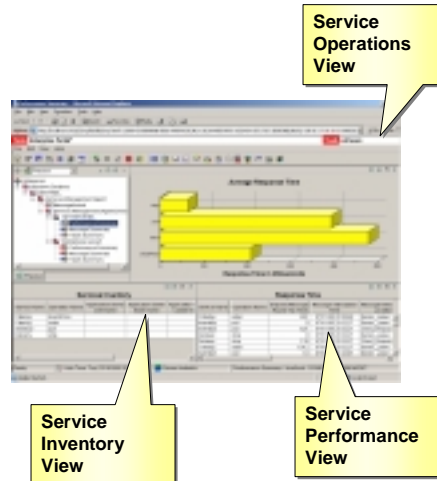
IBM Tivoli Composite Application Manager (ITCAM) can help you!



IBM

## Monitor Web Services with IBM Tivoli Composite Application Manager (ITCAM) for SOA

- Provides service monitoring views in TEP
- Maintains service performance with built-in and extensible alerts, mediations, situations and workflows
- Supports IBM WebSphere family including WebSphere Application Server, WebSphere Process Server, WebSphere ESB
- Cross-workspace linkages enable launch in context from services to application components and IT resources



## Managing Batch Workloads

What about managing batch workloads across my SOA-enabled System z?



On Demand Insurance  
CIO

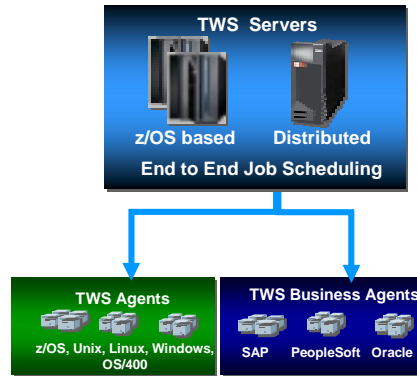
Let me tell you about **IBM Tivoli Workload Scheduler for z/OS!**



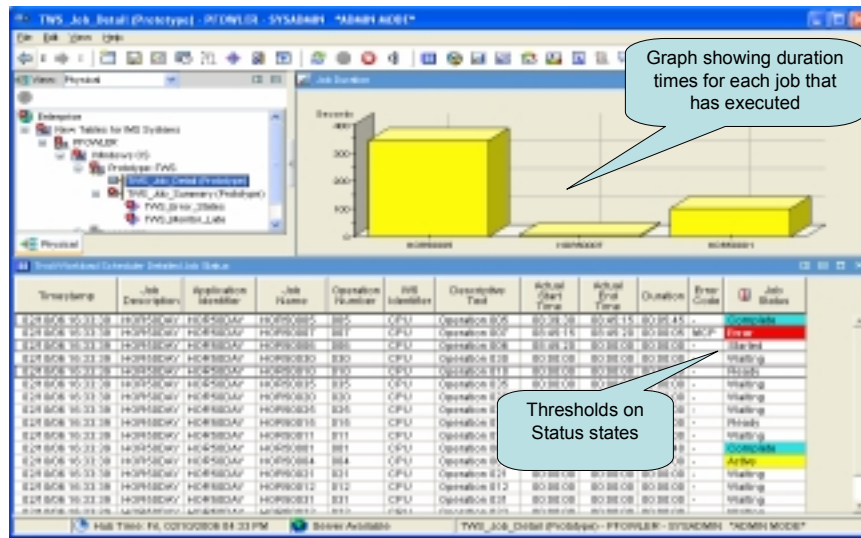
IBM

# Workload Management with IBM Tivoli Workload Scheduler (TWS) for z/OS

- Automates, plans and controls the processing of production workload from TEP
- Drives workload performance according to business objectives
- Dynamic real-time workload automation in addition to calendar and event-based scheduling
- Critical path monitoring and integration with WLM to reduce delay in a critical batch workload
- Integrates with IBM Tivoli Workload Scheduler (for distributed platforms) to provide a true end-to-end Job Scheduler solution



# Details for a Job Description Example – IBM Tivoli Workload Scheduler for z/OS



## Summary

Using the **IBM Tivoli** management products we were able to **simplify operations without adding staff**



**On Demand Insurance  
CIO**

