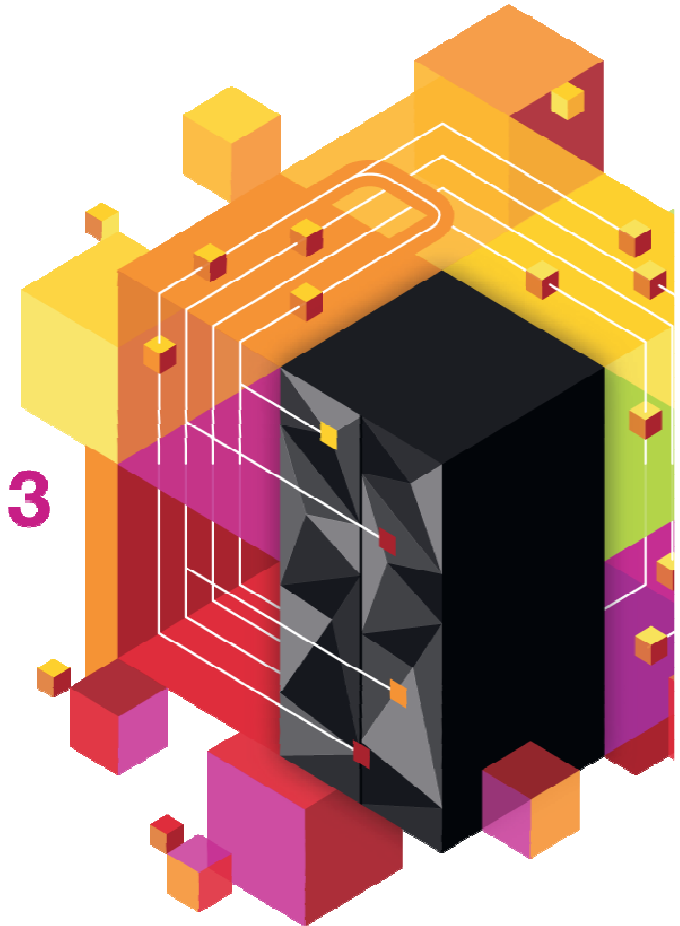
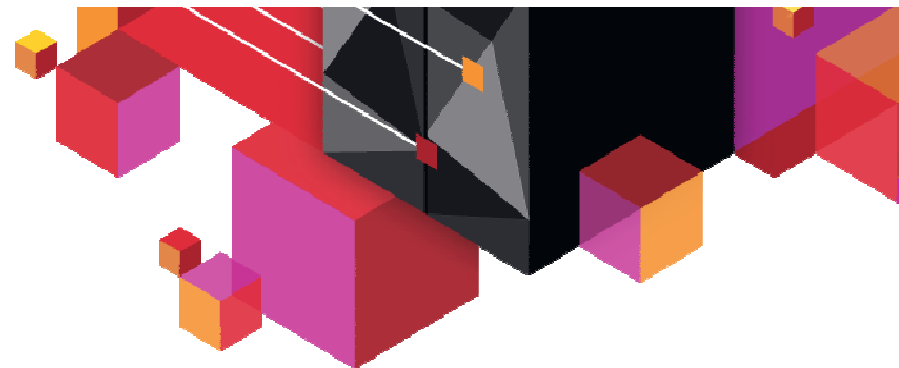




Université du Mainframe 2013

4-5 avril





IMS la révolution continue

Isabelle Bruneel

Isabelle_bruneel@fr.ibm.com

et

Hélène Lyon

helene.lyon@fr.ibm.com

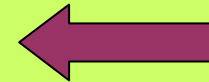
Université du Mainframe 2013

4-5 avril



Agenda

- **Data visualization and reporting**
 - IMS 12 Catalog & IMS Explorer for Dev
 - IMS Administration
 - Cognos or QMF reporting with IMS 12
 - The IMS Auditing solution
- **IMS Apps Modernization**
 - How to do
 - Adding access to innovative services
 - Example of Business Rules
- **IMS Access from Mobile**
- **Documentation, events and education**





IMS DB Modernization – Great Features with IMS 12

- **IMS Catalog**

- IMS Metadata management
- Redbook: IMS 12 The Catalog
- REDP-4812-00 redbooks.ibm.com
 - Also downloadable as an “EPUB”



- **IMS Explorer for Dev & IMS Catalog**

ibm.com/software/data/ims/soa-integration-suite/enterprise-suite/explorer/

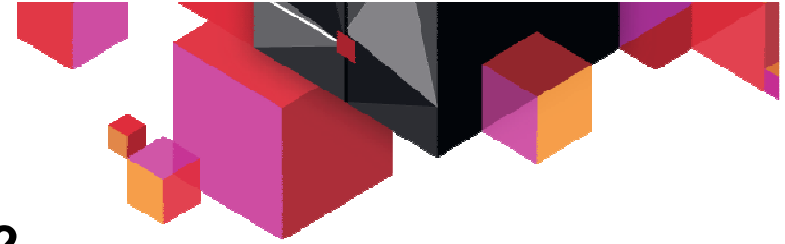
- New *IMS Explorer V2.2.0.1* available since February 15th 2013
- Download as part of IMS Enterprise Suite

New

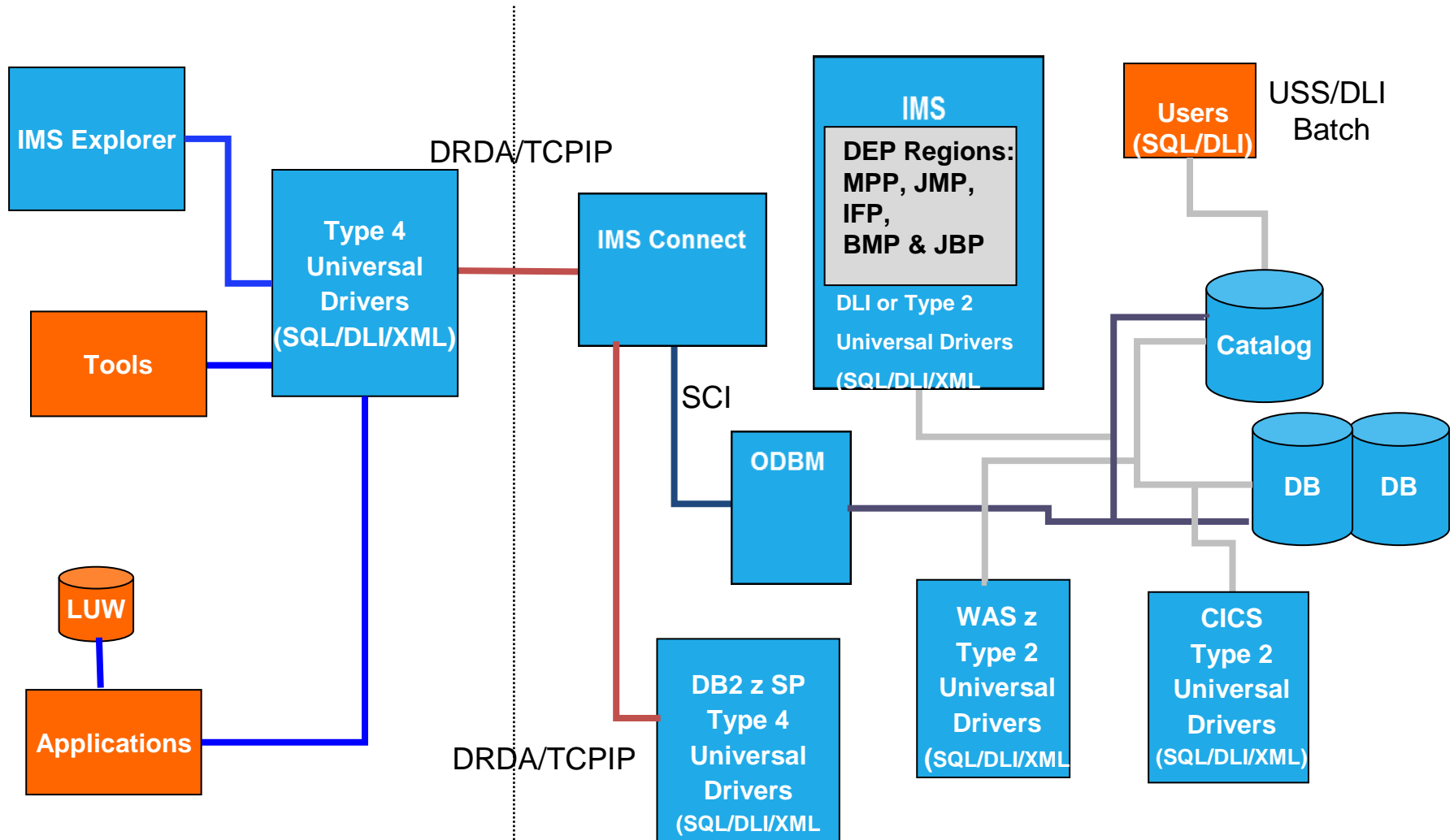
ibm.com/ims

- → **Click on IMS Enterprise Suite**





IMS Data Runtime Access with IMS V12





IMS Explorer ... two offerings

- Stand-alone offering
- Shell-sharing offering for use

IMS Enterprise Suite

Downloads

To properly configure your download, please review the information below. Select the appropriate offering. When you are done, press the "Continue" button at the bottom.

Offering	Platform	Format
<input checked="" type="radio"/> IMS Enterprise Suite Explorer for Development Version 2.2.0.1 Languages: English	Windows	download

Download using Download Director | **Download using http**

Select all files

For installation instructions, see the [IMS Explorer documentation](#) in the information center.
For latest information, known issues, and workaround, see the [IMS Explorer readme](#).

Installation Manager

Use the IBM Installation Manager V1.5.3 or later to install IMS Enterprise Suite Explorer for Development. Download agent.installer.win32.win32.x86 for Windows from the [Installation Manager V1.5.3 download page](#).

IMS Enterprise Suite Explorer for Development

The installation repository file for IMS Explorer
IMSExplorer2201.zip (820 MB) Stand-alone

The installation repository file for the shell-sharing version of the IMS Explorer
plug-in package to be installed on top of IBM RDz (8.5 or higher) or IBM Data Studio
(3.1.1 or higher).
IMSExplorer_SS2201.zip (400 MB) Shell-sharing

Download now

Shell sharing version to install on top of RDz or Datastudio



SQL to DL/I call translation information

Traduction d'appel SQL en Data Language/I

Profil de connexion : EXPOCP37

Nom du PSB de requête : EXPOCP37

Instructions SQL :
SELECT * FROM A1111111 WHERE
FIRSTNAME='MATA'

DL/I:
GHU A1111111*((x'b',x'a') EQMATA)
(LOOP)
GHN A1111111*((x'b',x'a') EQMATA)

Traduire

File Edit Navigate Search Project Run

IMS Explorer Window Help

Show SQL to DL/I Call Translation

Project Exp Package Ex

Cognos
DealerShip DB
helene
IMS_Explorer_Catalog_ReadOnly
PSB_EXPOCP37_Catlg
PSB_EXPOFP37_FTP
PSB_EXPLLP37_local

Different projects

EMPLDB.dbd

Projet : DealerShip DB

Nom de DBD : EMP

EMPL
Parent log
Longueur :
EMPNO
LASTNME
FIRSTNME

Copybook mapping in DBD

Graphical DBD view with logical relationships

Data Source Explorer

Database Connections

- EXPOCP37
- EXPOFP37
- EXPLLP37
- IMS Catalog
- MOPDB40 (DB2 for z/OS V9.1 (New))
- MOPDB40
- ODA Data Sources
- Flat File Data Source
- Web Services Data Source
- XML Data Source

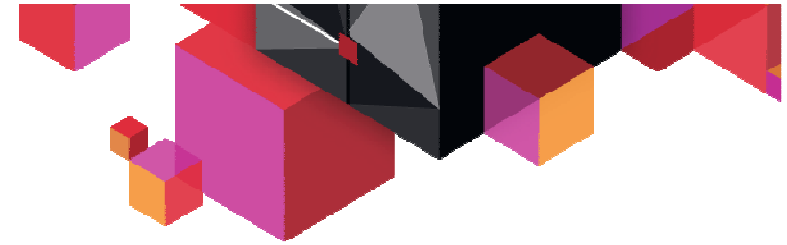
DB2 and IMS connections to execute SQL

Properties Error Log Problems Host Connections SQL Results Servers

Type query expression here

Status	Operation	Date	LASTNAME	FIRSTNAME	EXTENSION
✓ Succeeded	Return All Rows	28 mars ...	HARI	MATA	8-111-4444
			BOND	JAMES	8-111-2222
			BOURNE	JASON	8-111-1111
			FLINTSTONE	FRED	7-222-3333
			ADAMSREDC	TR	8-111-2222

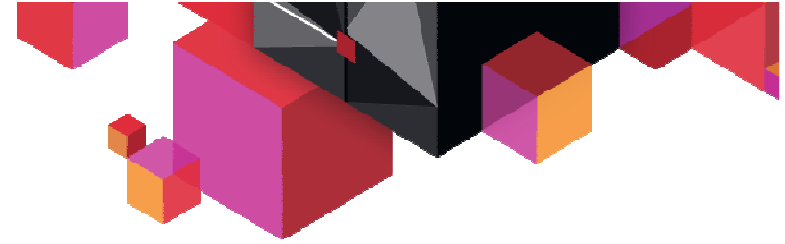
Total 7 records shown



IBM Data Studio

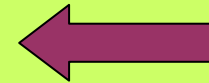
- IBM Data Studio is a set of powerful Information Management tools that help you manage enterprise data, databases, and data-driven applications
- Available at no-charge: ibm.com/developerworks/downloads/im/data/
- IMS Explorer for Dev can be installed in shell-sharing with Datastudio to better merge IMS and DB2 in the same eclipse environment.

The screenshot shows the IBM developerWorks website. The top navigation bar includes the IBM logo, a language dropdown set to 'English', and the 'developerWorks' logo. Below this are navigation links for 'Technical topics', 'Evaluation software', 'Community', and 'Events'. The main content area is titled 'IBM Data Studio: Available at no charge'. It features a breadcrumb trail: 'developerWorks > Evaluation software > Information Management >'. A left sidebar contains a menu for 'Information Mgmt' with sub-items: 'New to Information Mgmt', 'Products', 'Downloads', 'Technical library', 'Community & forums', and 'Events'. Below the sidebar are 'Related links' for 'IBM software downloads' and 'IBM software product finder'. The main text describes IBM Data Studio as an integrated, modular environment for database development and administration. A 'Note' section mentions additional tools included with Data Studio. At the bottom, there are six links: 'Product main page', 'System requirements', 'Overview of Data Studio components', 'Quick start installation instructions', 'Supported data servers by feature', and 'Product support'.



Agenda

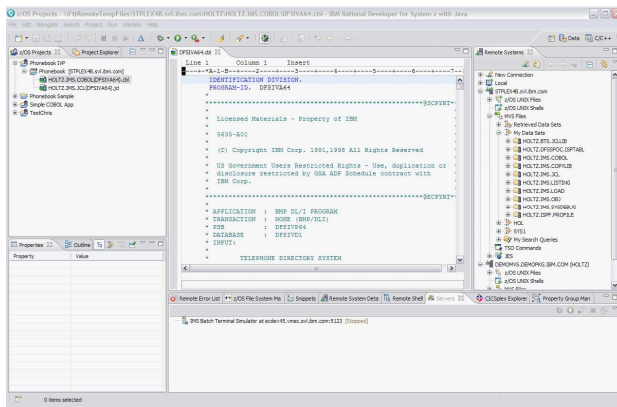
- **Data visualization and reporting**
 - IMS 12 Catalog & IMS Explorer for Dev
 - IMS Administration
 - Cognos or QMF reporting with IMS 12
 - The IMS Auditing solution
- **IMS Apps Modernization**
 - How to do
 - Adding access to innovative services
 - Example of Business Rules
- **IMS Access from Mobile**
- **Documentation, events and education**





2 environments for 2 jobs

Eclipse (development)



Developers

IMS Tools Base (No charge)

DB Administration
IMS Database Solution Pack
IMS Fast Path Solution Pack

Web Browser (administration)



Administrators



Rational Developer for Z
Datastudio

IMS Explorer for Developers
In S/A or Shell Sharing
(No charge)

PD Tools
Batch terminal Simulator



GA May 24, 2013
IBM Tools Base for z/OS 1.4



Available December 9, 2011
IMS Database Solution Pack 1.2
IMS Fast Path Solution Pack 1.2
IBM Tools Base for z/OS 1.3

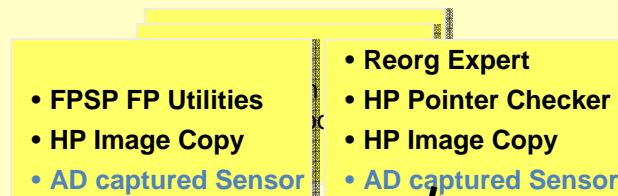
Administering DB with sensor

IMS FP Solution Pack V1.2 and IMS Database Solution Pack V1.2

■ Implemented DB Sensor capability in FPSP and DBSP :

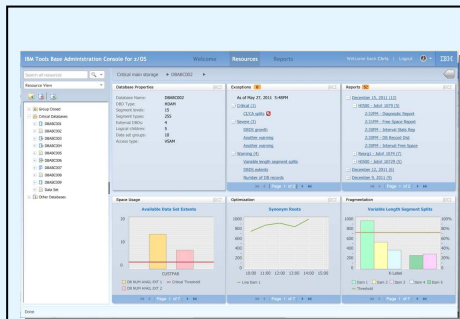
- Sensor data can be collected as part of analyze, reorg, or image copy
- Sensor data collection can be notified to Autonomics Director

DB Sensor function



IBM Tools Base V1.3

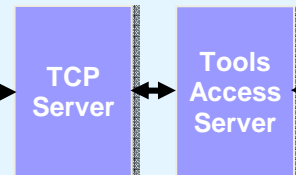
Administration Console



Open Env.

z/OS Env.

Distributed Access Infrastructure (DAI)



• Store sensor data (and reports)

• Notify of sensor data

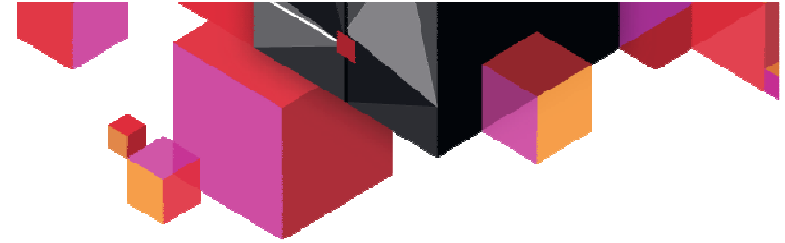
Autonomics Director (+ Policy Services)

IMS Tools Knowledge Base Repository Server

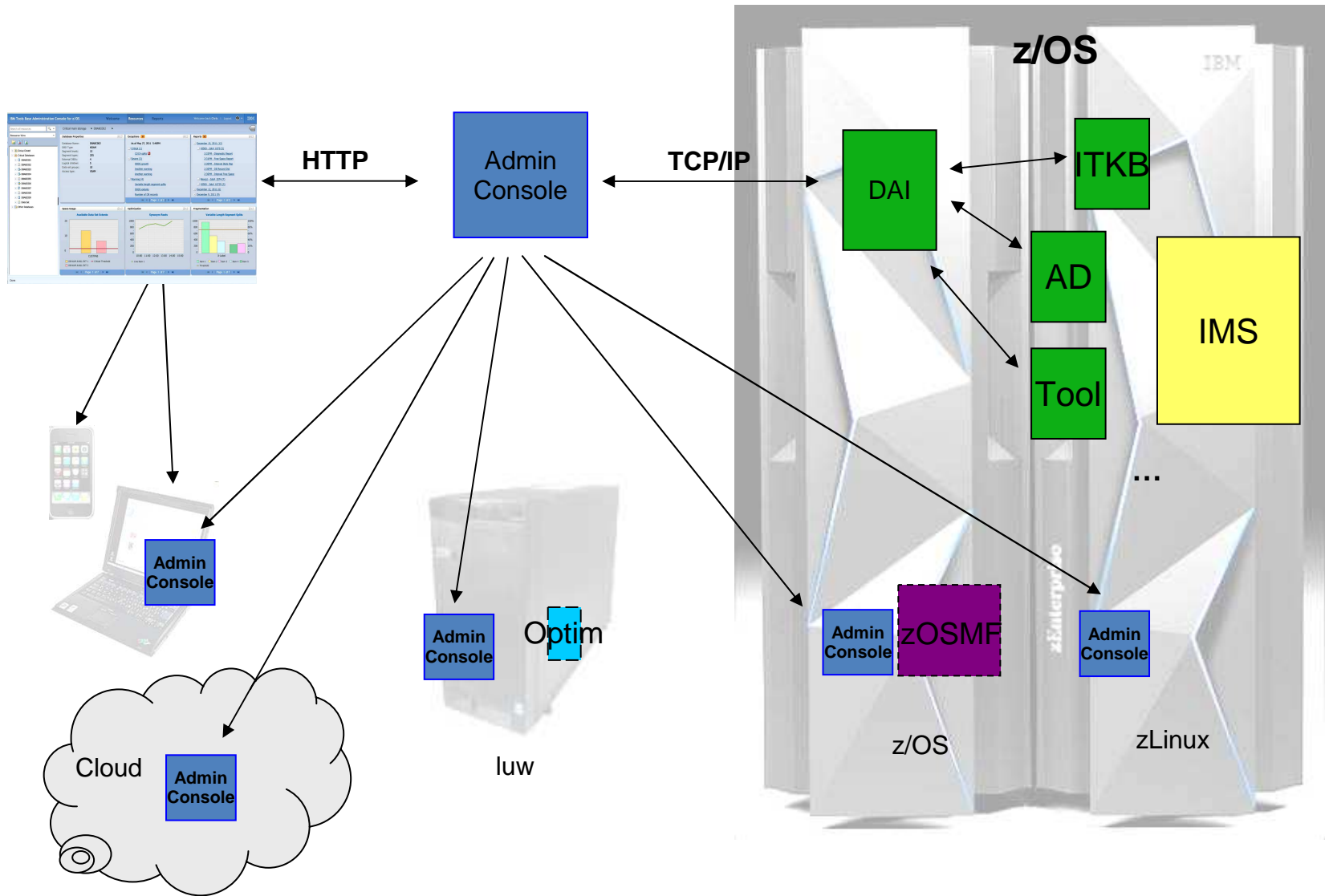


Autonomics Director Server

- Policy-based DEDB area diagnosis
- Policy-based FF diagnosis



Administration Console





Administration Console work flow

1 Summary Table for a FFDB

Check the summary of latest FFDB space diagnosis done by Autonomics Director.



2 Exceptions Widget

Check the Exceptions widget for evaluation results for the resource.



3 Help Widget

Context sensitive help for exceptions, charts, etc

Excessive number of variable-length split segments exception
Rule condition at related data element
At least one of the following data element values has reached or exceeded a threshold value in a data set of the database or partition:

- The percentage of split variable-length segments compared to the total number of variable-length segments (DB_PCT_NUM_VLSEG)
- The number of split variable-length segments (DB_NUM_VLSEG_SPLIT)

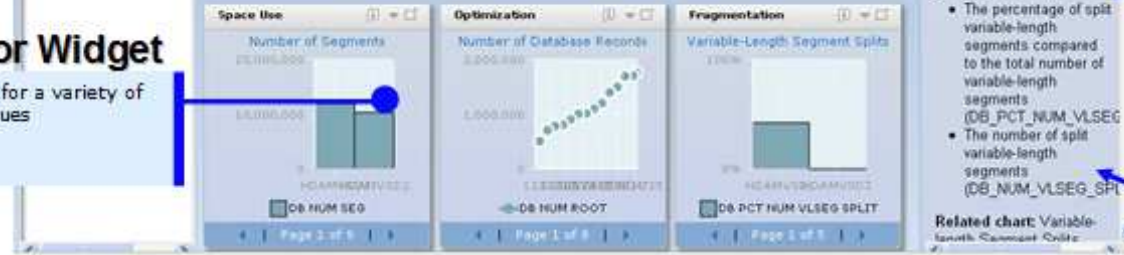
Related chart: Variable-length Segment Splits

4 Reports Widget

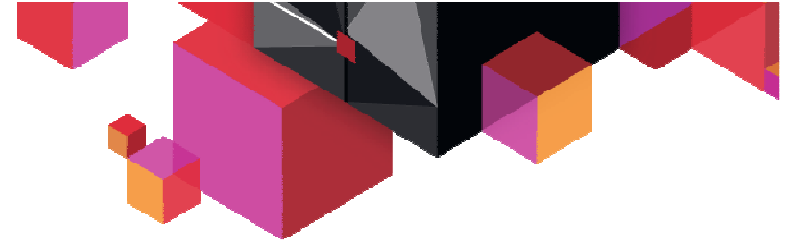
View DB Solution Pack utility reports for detailed analysis of resource space usage.

5 Sensor Widget

Identify trends for a variety of sensor data values

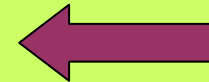


Main dashboard for a FFDB



Agenda

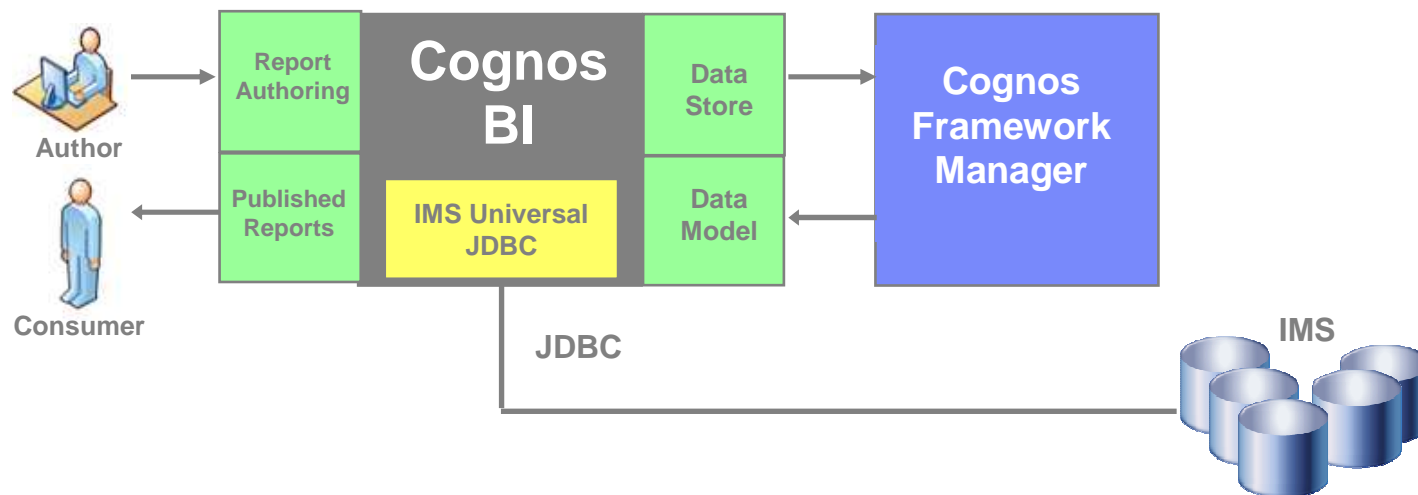
- **Data visualization and reporting**
 - IMS 12 Catalog & IMS Explorer for Dev
 - IMS Administration
 - Cognos or QMF reporting with IMS 12
 - The IMS Auditing solution
- **IMS Apps Modernization**
 - How to do
 - Adding access to innovative services
 - Example of Business Rules
- **IMS Access from Mobile**
- **Documentation, events and education**





Cognos Reporting with IMS 12

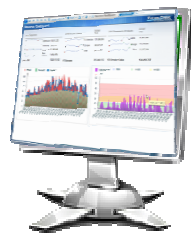
- **Benefits:**
 - Ad hoc reporting access
 - Report on data reflecting the most current state of the business
 - React faster to trusted data
 - Market-leading BI solution for IMS customers
- **Roadmap for customers**
 - Cognos 10.2 & IMS V11: IMS 11 JDBC driver is NOT certified with Cognos 10.2.
 - Even if Open database architecture is available.
 - Cognos 10.2 & IMS V12 : IMS 12 JDBC driver with Catalog is certified with Cognos 10.2.
 - New functions that allow to get enhanced predicats exploited by Cognos
 - IMS catalog for z/OS centralized metadata management



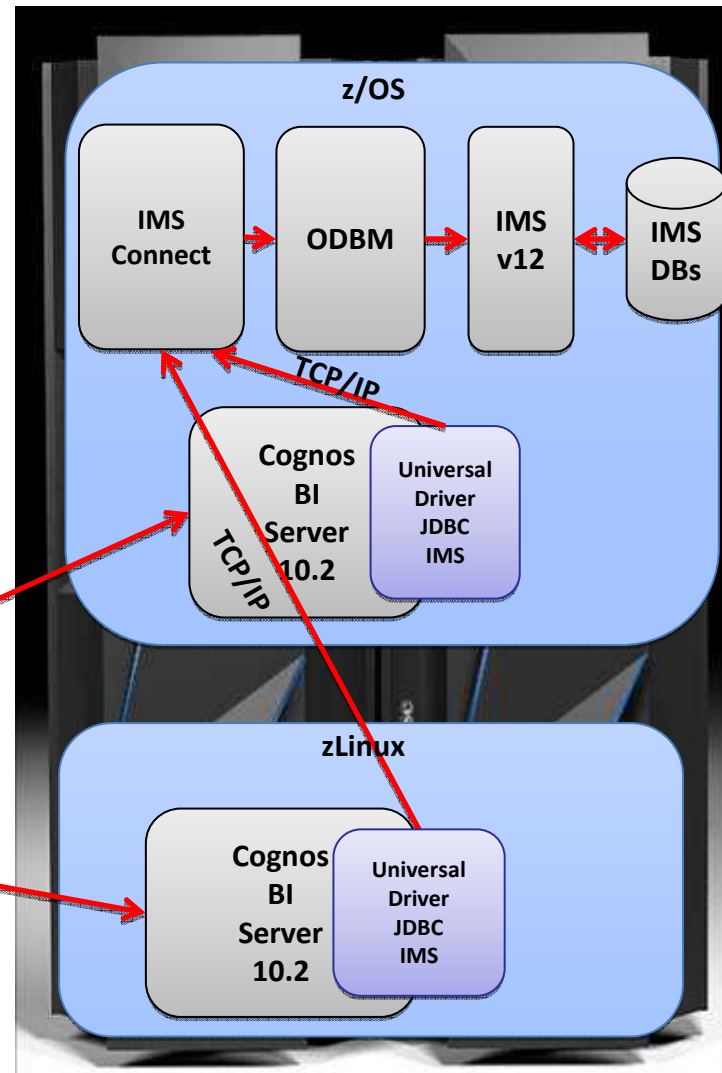


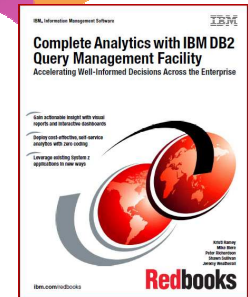
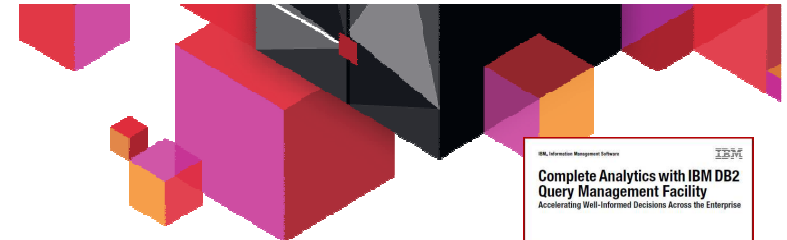
Cognos Reporting avec IMS v12

- **Advantages:**
 - Ad hoc reporting access
 - Report on data reflecting the most current state of the business
 - React faster to trusted data
 - Market-leading BI solution for IMS customers



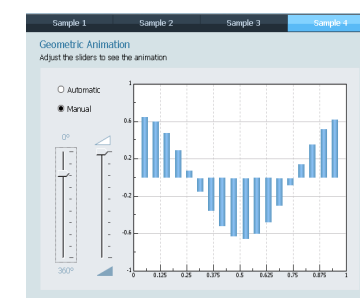
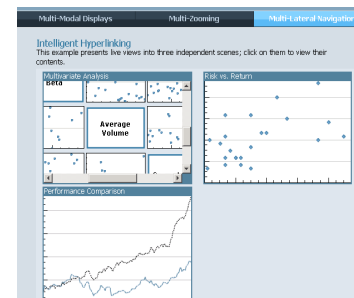
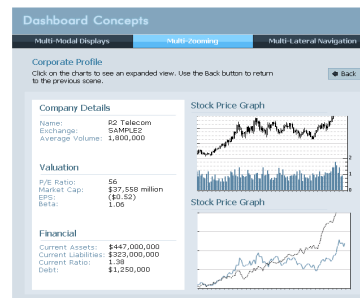
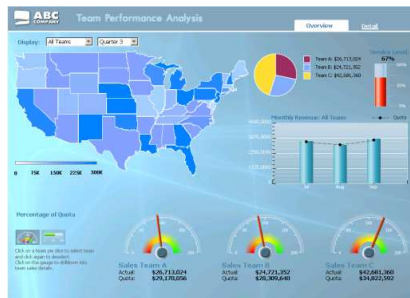
- Cognos Query Studio & Report Studio
- Cognos Framework Manager





Access with Query Management Facility (QMF)

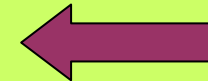
- Maximize benefits from IMS environment
- JDBC Open Data Access to IMS in a managed environment
- Users graphically construct ad-hoc IMS queries
- Create reports and dashboards that draw directly from IMS data
- Roll out web-based graphical content that blends IMS data with relational and multi-dimensional data sources
- Incorporate IMS data within federated queries
- Redbook SG24-8012
 - Complete Analytics with IBM DB2 Query Management Facility: Accelerating Well-Informed Decisions Across the Enterprise





Agenda

- **Data visualization and reporting**
 - IMS 12 Catalog & IMS Explorer for Dev
 - IMS Administration
 - Cognos or QMF reporting with IMS 12
 - The IMS Auditing solution
- **IMS Apps Modernization**
 - How to do
 - Adding access to innovative services
 - Example of Business Rules
- **IMS Access from Mobile**
- **Documentation, events and education**

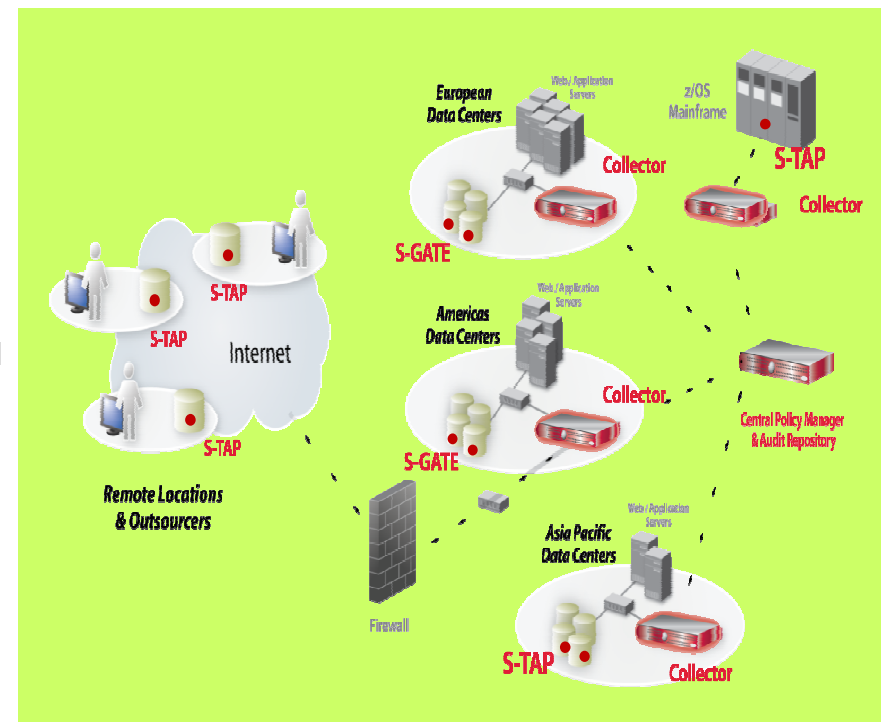


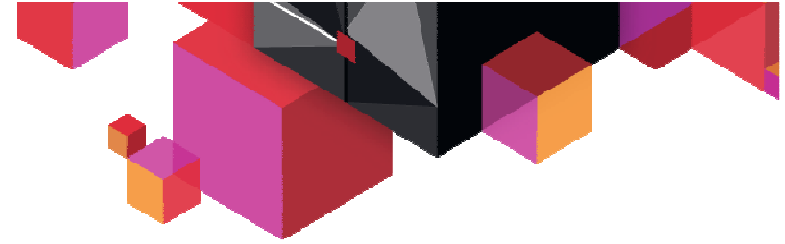


IBM InfoSphere Guardium S-TAP for IMS

- **Real-Time activity Monitoring**
 - Collect Audit information of access to IMS Databases and IMS artifacts
- **Audit Data Collected**
 - Accesses to databases and segment
 - IMS Online regions & IMS DLI/DBB batch jobs
 - GET and INSERT (ISRT), UPDATE (REPL), DELETE (DLET)
 - Obtain concatenated key and segment data
 - Links Get Hold and Replace calls which enables before and after images of UPDATED segments
 - Access to database, image copy and RECON data sets
 - IMS Online region START and STOP, database and PSB change of state activity and USER sign-on and sign-off as recorded in the IMS Archived Log data sets
- **4 Sources to collect audit information**
 - IMS Online regions – to get zIIP support
 - IMS DLI/DBB batch jobs
 - SMF (System Management Facility)
 - IMS Archive Log (SLDS)
- **Also check improvements to IBM InfoSphere Guardium S-TAP for DB2 and InfoSphere Guardium S-TAP for VSAM on z/OS**

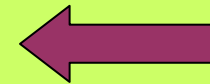
New version
October 2012





Agenda

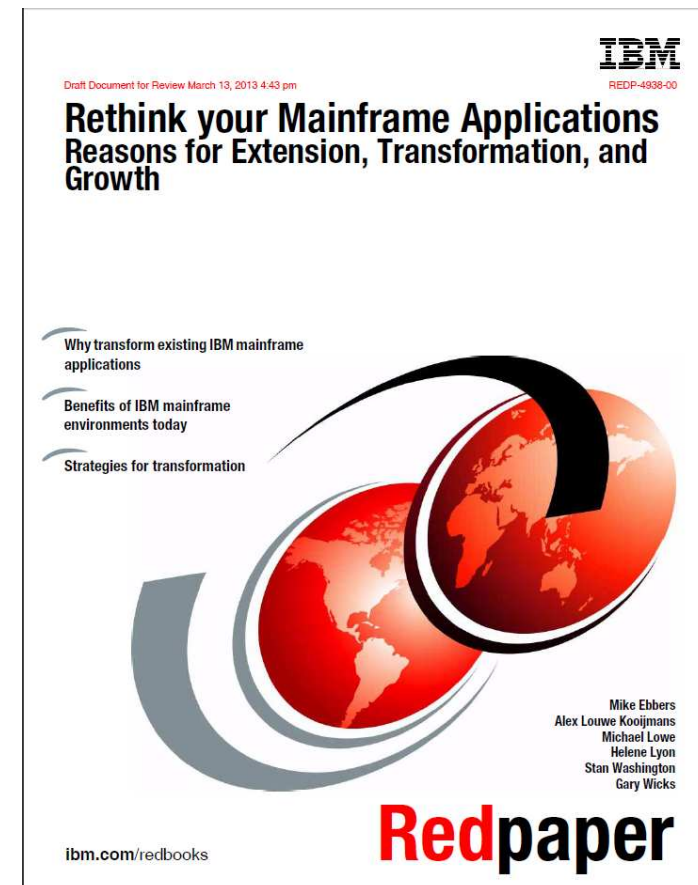
- **Data visualization and reporting**
 - IMS 12 Catalog & IMS Explorer for Dev
 - IMS Administration
 - Cognos or QMF reporting with IMS 12
 - The IMS Auditing solution
- **IMS Apps Modernization**
 - How to do
 - Adding access to innovative services
 - Example of Business Rules
- **IMS Access from Mobile**
- **Documentation, events and education**





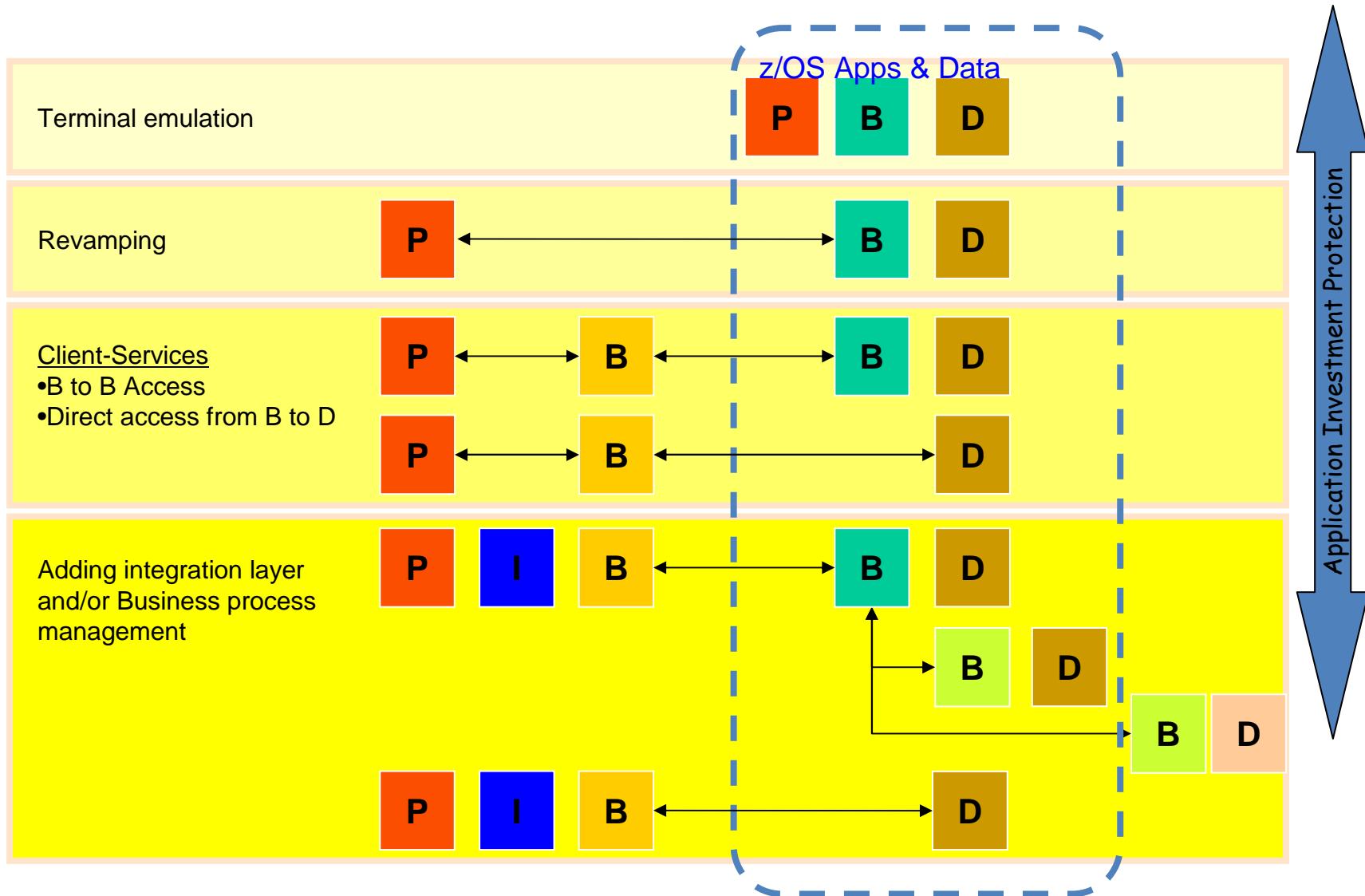
Rethink your Mainframe Apps

- **Download the Redpaper**
 - www.redbooks.ibm.com/redpieces/pdfs/redp4938.pdf
- **Co-authors with great IMS knowledge**
 - Gary Wicks
 - Helene Lyon
- **Answers to 3 questions ...**
 - Why transform existing IBM mainframe applications?
 - What are the benefits of IBM mainframe environments today?
 - What are some strategies for transformation and extensibility of applications?
- **... organized in 4 chapters**
 - Business and IT trends and how they affect existing applications
 - Attributes of an agile IT architecture
 - The way today's mainframe applications are implemented
 - Evolution paths to achieve more value





Maturity Level based on Separation of Application Layers





Evolution Paths for Modernization

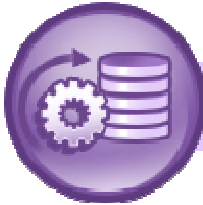
- **Application runtime modernization**
 - Run regular health checks
 - Implement agile development & test environments
 - Optimize the batch window
 - Take benefit of a highly available infrastructure
- **Application development foundation modernization**
 - Use of the latest compilers
 - Use of a single Integrated Development Environment (IDE)
 - Take benefit of an end-to-end view of development
- **Business application modernization**
 - Call out to services running in WebSphere Application Server on z/OS
 - Integrate external business rules
 - Incorporate direct access to master data management services
 - Publish business events
 - Access real-time scoring capabilities
 - Integrate local CPLEX mathematical algorithms
- **End to end application infrastructure modernization**
 - Integrate CICS and IMS programs as services in a service oriented architecture
 - Augment the integration architecture with business process management
 - Expand the multi-channel architecture and integrate the mobile channel
 - Access mainframe data directly



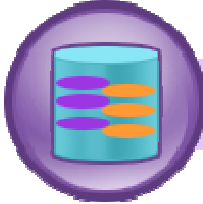
Business Application Modernization – Many Things



Mobile, Cloud, Web Services



Business Process Management



Rules



Enterprise Service Bus



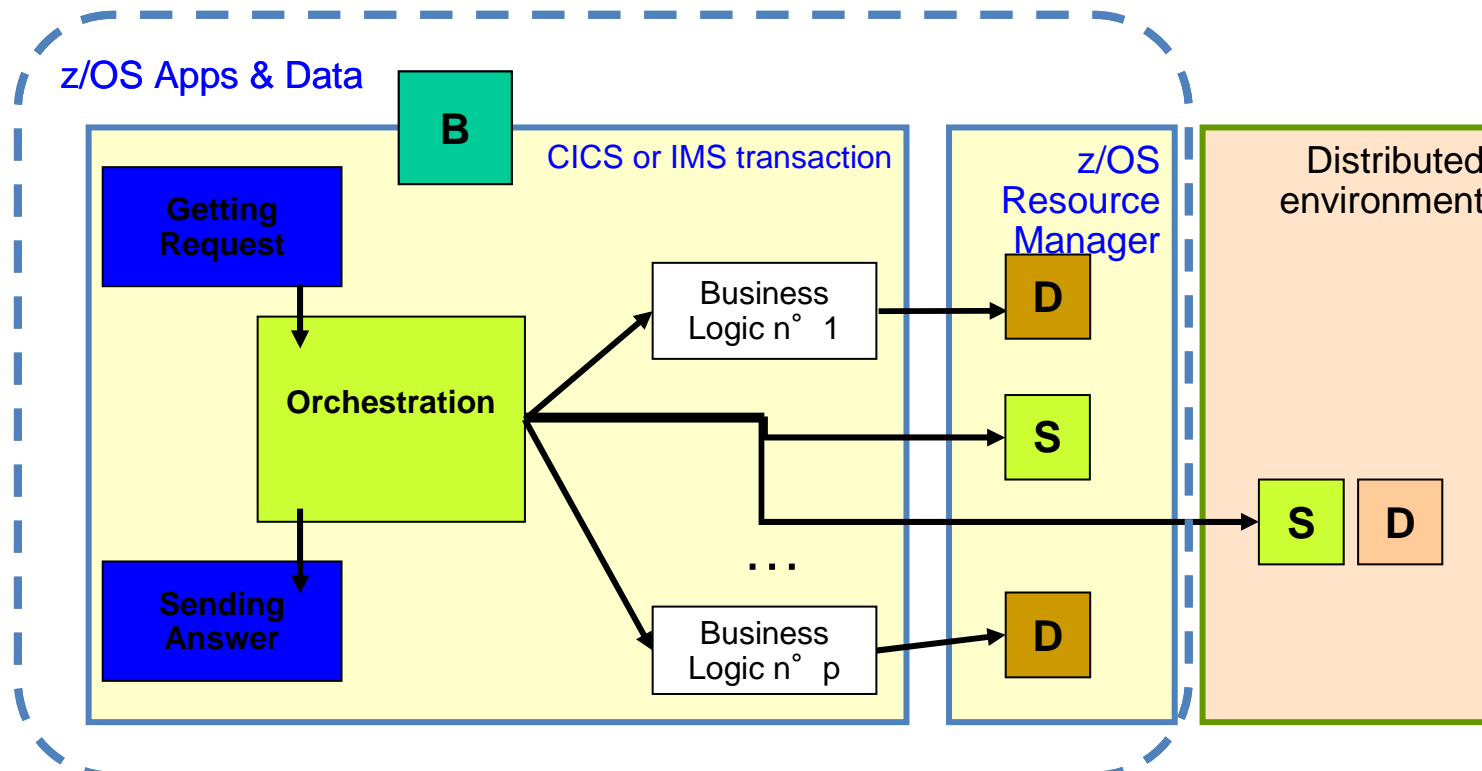
Events

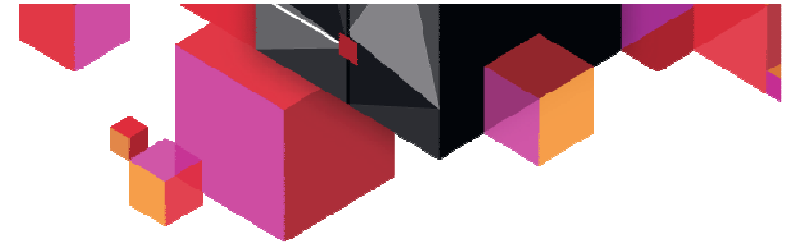




IMS Apps Modernization – Adding access to innovative services

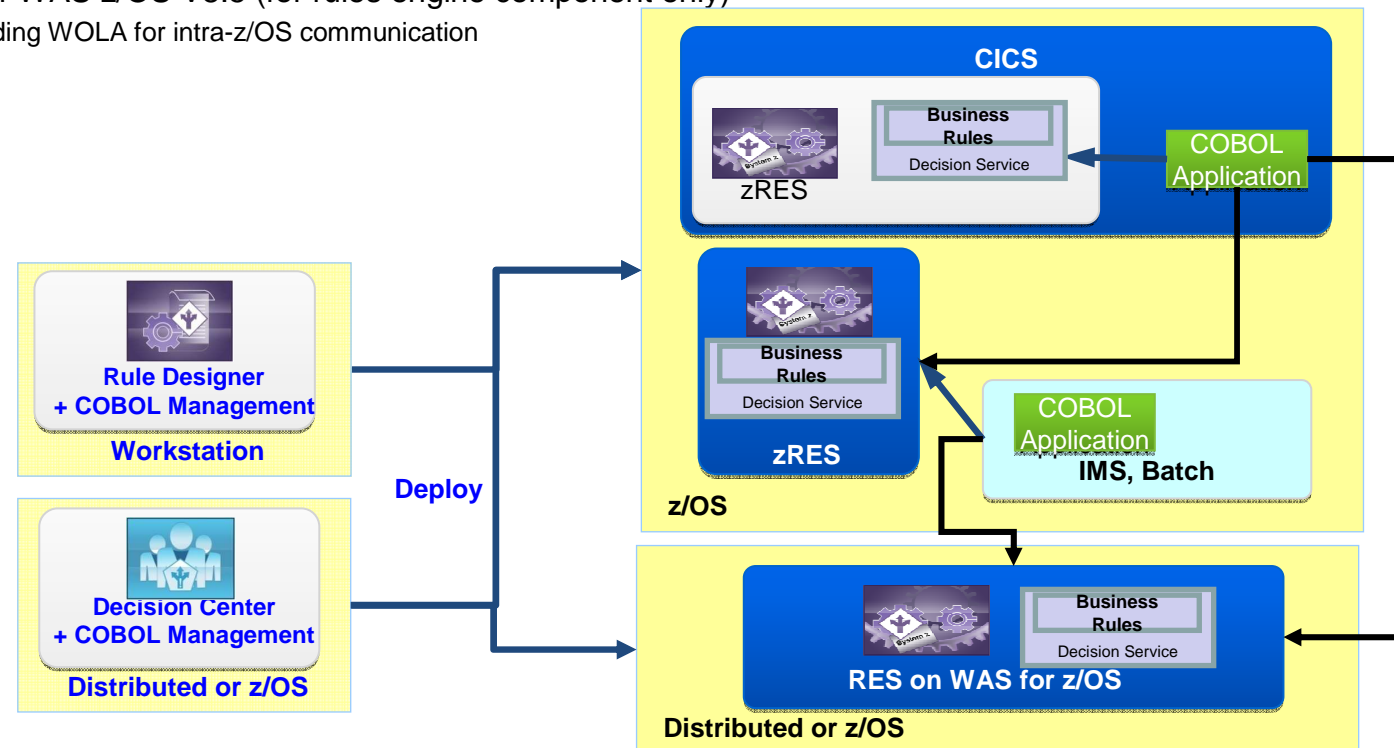
- Modernize IMS Business logics “B” by accessing new services “S” and new type of data “D”
 - Using Business Rules
 - Using real-time scoring functions
 - Access to master data in DB2 for z/OS





IMS Apps & Business Rules

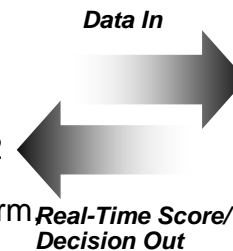
- **New IBM Operational Decision Manager for z/OS V8.0.1 available December 14 2012**
- **New features include:**
 - Full support for IMS customers (in addition to the previous IMS batch capabilities)
 - Optimized execution for batch processing (via the new Decision Engine)
 - Optimized rule execution for CICS 5.x customers
 - Support for WAS z/OS V8.5 (for rules engine component only)
 - Including WOLA for intra-z/OS communication





IMS Apps & Real-Time Scoring

- **Moving the computation to the Operational Transactional data**
 - z/Apps can call scoring services deployed in the scoring engine
 - z/Apps can invoke SPSS Modeler scoring algorithms directly into IBM DB2 for z/OS
 - Scores can be invoked by SQL statements and run in user defined functions (UDFs) in DB2 for z/OS.
 - Rather than extracting data from DB2 and sending it to a separate scoring engine on System z or another platform, it can be scored within the scope of a transaction accessing the DB2 primary data
 - Lab measurements demonstrate the ability to drive 10,000 scoring transactions per second with 15 millisecond response times.
- **The solution enables the real-time scoring of new transactional data as it is created, resulting in decision-making with greater accuracy and efficiency, while ensuring that you can continue to deliver upon your service level agreements.**

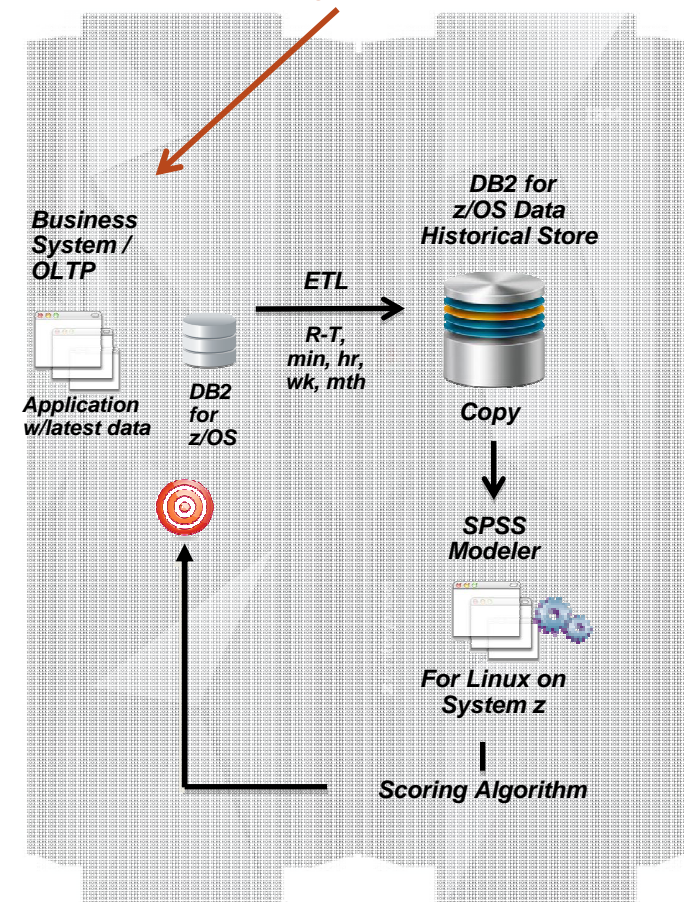


*Reduced
Networking*

*End to end
solution*



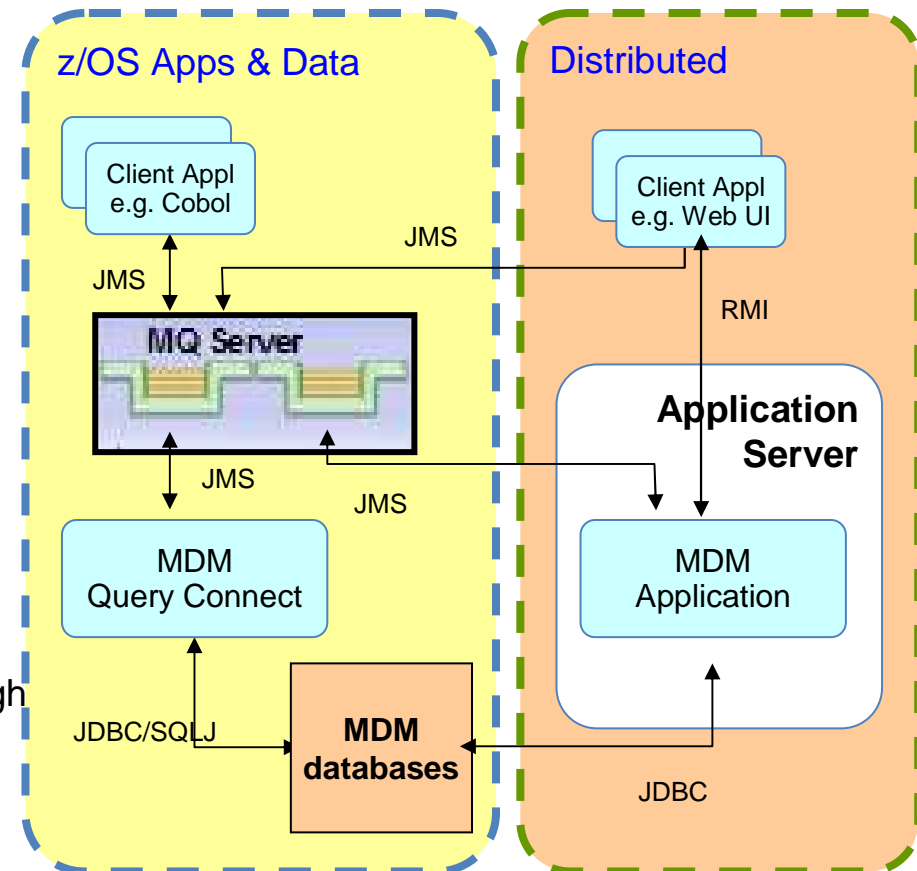
*Support for both in-transaction and
in-database scoring on the same platform*

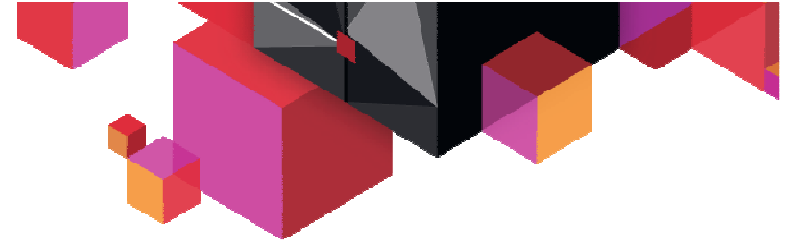




IMS Apps & Master Data Services

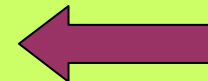
- Incorporate direct access to master data managed with DB2 for z/OS
- The MDM Query Connect server is designed to supplement the Central Transaction server by providing a native mainframe capability to address searches and inquiries specifically when data is residing in DB2 for z/OS.
 - A COBOL Adapter enables COBOL programs to access the Master Data Management Server services through the MDM Server Central Transaction server (for update requests) and through the MDM Server “Query” Connect (for read-only requests).
 - Transactional systems running in the mainframe environment send the request message to the request queue. The Central Transaction server and MDM Query Connect server can share the same queue or have separate ones.

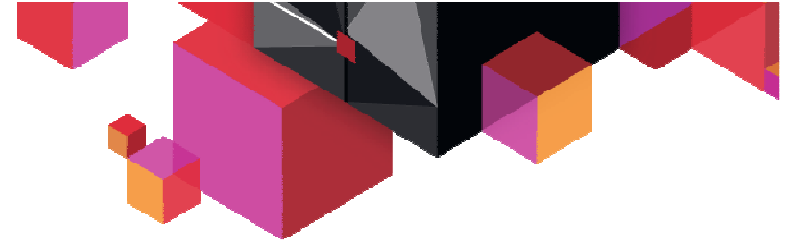




Agenda

- **Data visualization and reporting**
 - IMS 12 Catalog & IMS Explorer for Dev
 - IMS Administration
 - Cognos or QMF reporting with IMS 12
 - The IMS Auditing solution
- **IMS Apps Modernization**
 - How to do
 - Adding access to innovative services
 - Example of Business Rules
- **IMS Access from Mobile**
- **Documentation, events and education**





IMS Access from Mobile

- Check “[Considerations in opening the mainframe to mobile devices](#)”

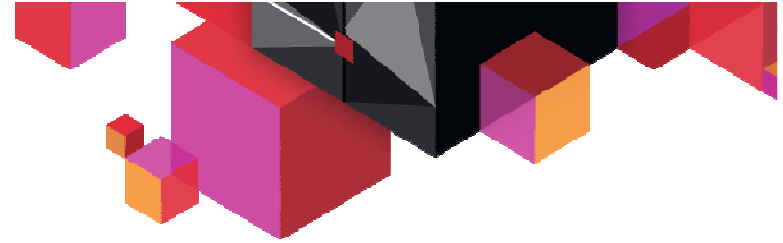
A guide for enterprise teams working on mobile applications

[Leigh Williamson](#), Distinguished Engineer, Software Group, IBM

Summary: As more and more enterprises in all industries realize the need for mobile versions of their business applications, there is a need for an enterprise-class approach to mobile app development that leverages past investments in information technology and infrastructure. Leigh Williamson explains the five key themes of the IBM approach to mobile application development, which exploits existing information and transaction systems for maximum speed to market and reuse of services.

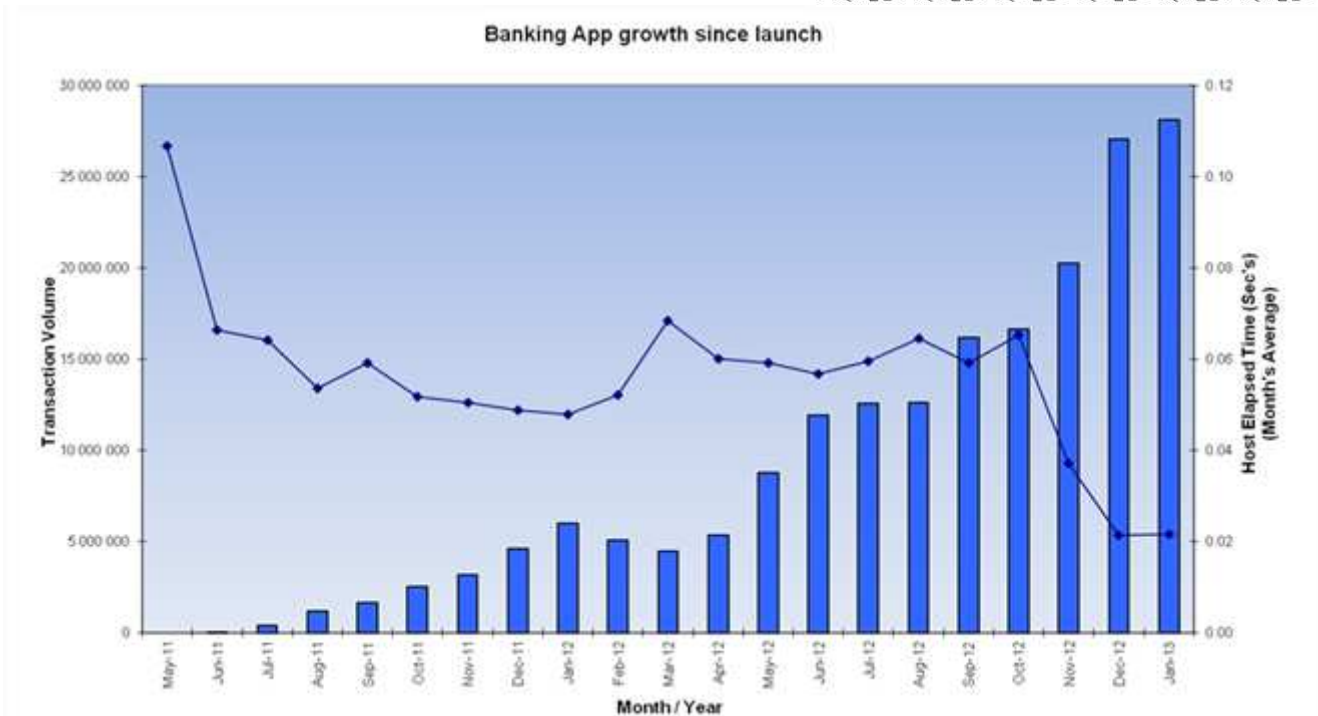
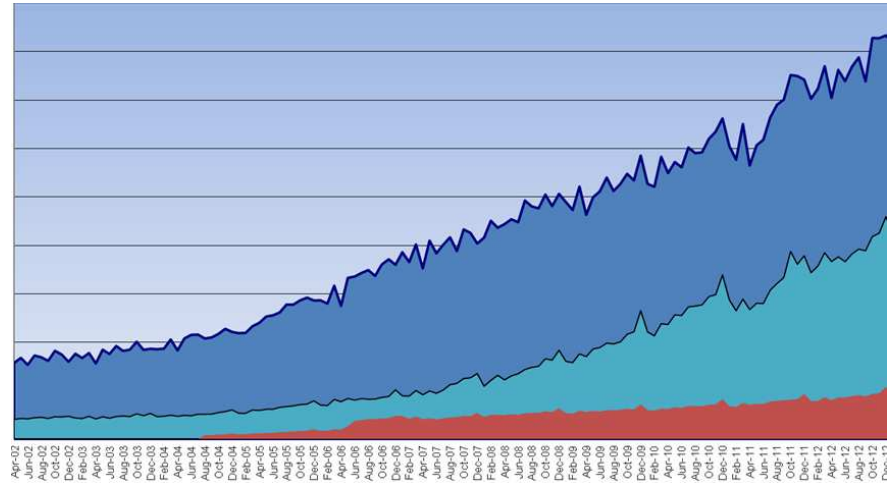
- **IMS Access from Mobile**

- IBM Worklight platform supports connectivity to back-end systems via a number of adapters, provided with the product.
 - Following a simple configuration process, IMS data can be accessed from the Worklight applications via the provided SQL adapter. The SQL adapter supports IMS Universal Driver, which must be downloaded separately and added to a Worklight project.
 - Similarly, IMS transactions can be executed via the provided HTTP adapter. The HTTP adapter works with RESTful and SOAP-based services. For IMS transaction support, IMS SOAP Gateway product must be downloaded and configured.
- The Worklight development environment can be used to create powerful IMS mobile applications (web-based, native, or hybrid) for a variety of mobile platforms and devices.

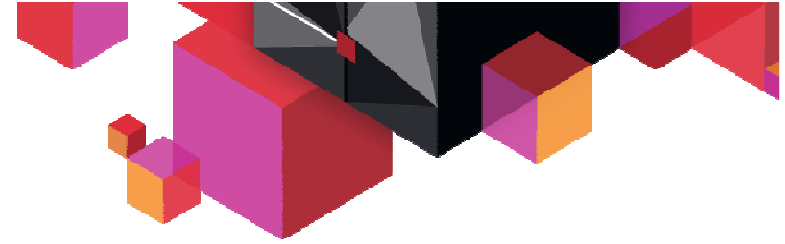


IMS Access from Mobile

- **Mobile Banking and IMS workload increase**
 - Total number of transactions per month over 10 years
 - Mobile banking evolution

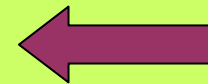


One
EMEA
Customer
Example



Agenda

- **Data visualization and reporting**
 - IMS 12 Catalog & IMS Explorer for Dev
 - IMS Administration
 - Cognos or QMF reporting with IMS 12
 - The IMS Auditing solution
- **IMS Apps Modernization**
 - How to do
 - Adding access to innovative services
 - Example of Business Rules
- **IMS Access from Mobile**
- **Documentation, events and education**





Two New IMS White Papers!

IBM Software
White Paper

What every enterprise architect needs to know about the evolution of IMS

Leverage IMS data and transactions as strategic elements of the enterprise architecture



IBM developerWorks

English Sign in (or register)

Technical topics Evaluation software Community Events Search developerWorks

developerWorks > Technical topics > Information Management > Technical library >

IBM Cognos Proven Practices: Best Practices for Using IMS Data in IBM Cognos BI Reports

Product(s): IMS, IBM Cognos BI Server; Area of Interest: Business Intelligence

Richard Tran, Software Engineer, IBM
Kevin Hite (khite@us.ibm.com), IMS Solution Test, IBM
Nigel Campbell, Senior Developer, IBM
David Hanson, Information Developer, IBM

Date: 03 Oct 2012
Level: Intermediate
PDF: [A4 and Letter](#) (261 KB | 13 pages) [Get Adobe® Reader®](#)

Activity: 2000 views
Comments: 0 ([View](#) | [Add comment](#) - Sign in)

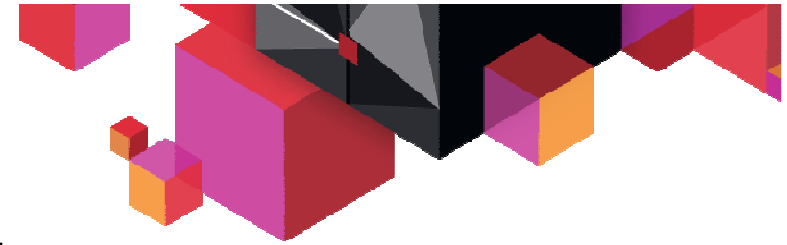
★ ★ ★ ★ ★ Average rating (1 votes)
[Rate this article](#)

[View more content in this series](#)

Download it today at ibm.co/PQ5Hdo



Download it today at ibm.com/ims



IMS 12 Technical Education Series

IBM Software > System z > Events >

System z Events



IBM IMS 12 – Technical Education on Enhancements and Migration Planning Series

Presentations available for download below, each session posted individually for easy reference.

- Available for replay at:
- ibm.com/software/os/systemz/telecon/26jun/prz/

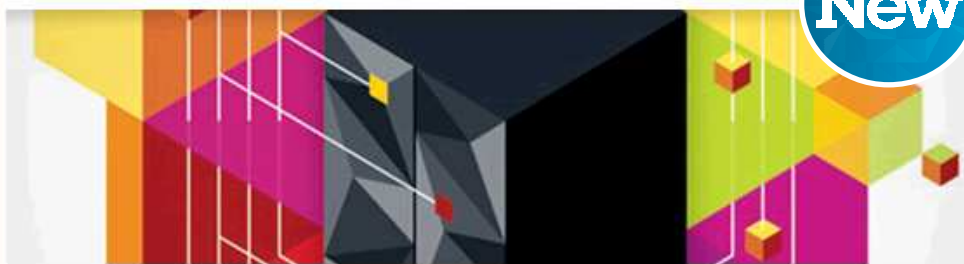


External Webcasts

- **The IMS Catalog: The Next Step in Simplification and Enterprise Integration**

Replay of the Teleconference is available at:
ibm.com/software/sw-events/teleconference/D108305C25358T22.html

System z Events



IMS Data Access using PureQuery

Replay of the teleconference on 26th Feb. 2013 at:
ibm.com/software/os/systemz/telecon/feb26/index.html?S_TA_CT=101HX3BM&S_CMP=ealendar



Link to webcasts can
be located at:

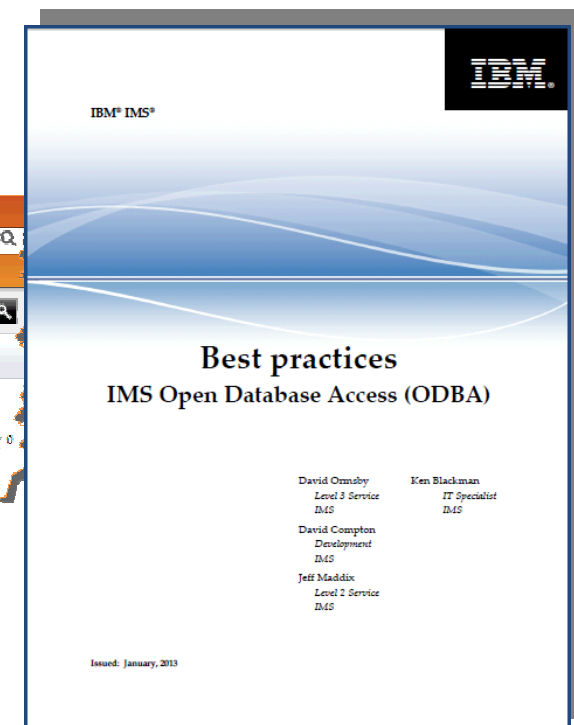
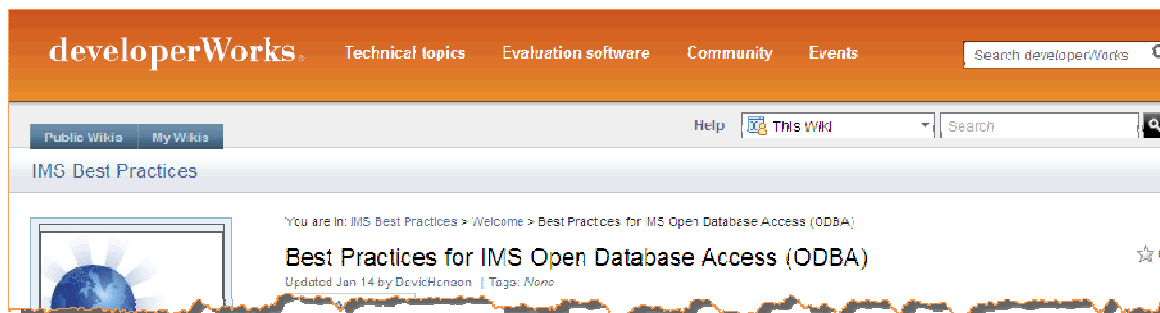
ibm.com/software/sw-events/type/systemz/events.html

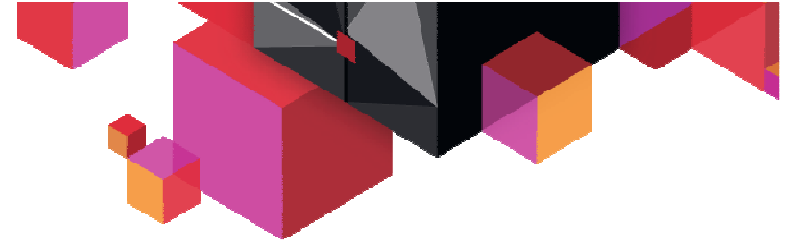




Open Database Access (ODBA)

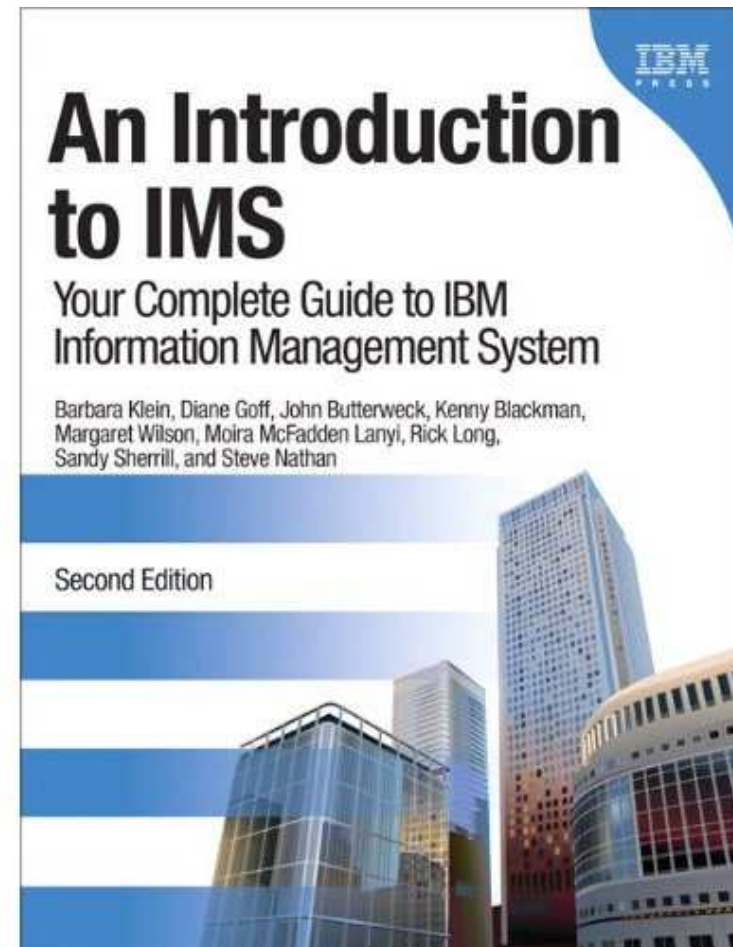
- “Best Practices for IMS Open Database Access” is available on Developer Works!
 - ibm.com/developerworks/





An Introduction to IMS – Second Edition

- **Updated to include IMS 10, IMS 11 and IMS 12 functions**
 - Published March 23, 2012





New! Online IMS Training with Marist College

- **Offered by the Institute for Data Center Professionals (IDCP) at Marist College**
 - The Marist z/OS Certificate Program
- **The IMS Application Programming Certificate program is one of 7 unique large systems education certificate programs.**
 - Each certificate program consists of three courses that run between 10-12 weeks each.
- **The courses within the IMS Application Programming Certificate program are:**
 - Introduction to z/OS and Major Subsystems
 - IMS Fundamentals
 - IMS Application Programming
- **The first course started on February 11, 2013!**
 - IBM and Marist College were pleased to offer an introductory rate of \$2000 for the full IMS Certificate program, 34 weeks of education based on weekly assignment of 10 to 15 hours each. The course can easily work in parallel to daily activities.
- **Stay tuned for next one!**
- **For more information about all of our z/OS education programs, visit: idcp.marist.edu/learnzos.**



New! Online IMS Training with InterSkills Learning

- **E-learning solutions including around 1500 hours on System z platform**
 - 7000 hours total including distributed platform
 - Organized by profile in a IT department
 - Customization possible with input from enterprise
- **Priced per license per user for one year including the whole z catalog – Around 1200€**
 - Enterprise license as well
- **Adding “Ask my Mentor” service contract in some countries**

InterSkills <http://www.interskill.co.uk/index.html>

IMS Database Administrator z/OS Learning Plan

The IMS database administrator is responsible for administration and support of the organization's IMS database systems. The duties of this position are:

- Designing and implementing IMS databases
- Monitoring database performance and performing tuning activities
- Identifying, analyzing, and resolving database problems

IBM System z e-learning bundles

- Cloud Computing for Data Centers (5 hrs)

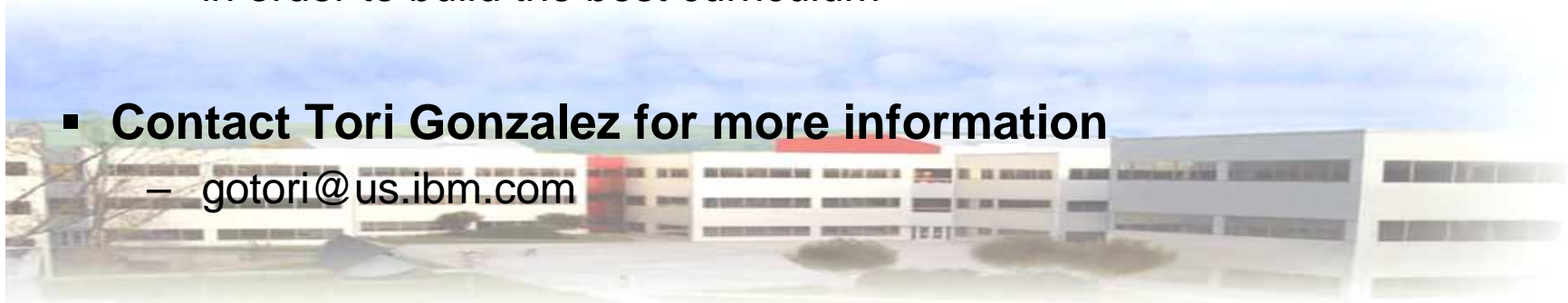


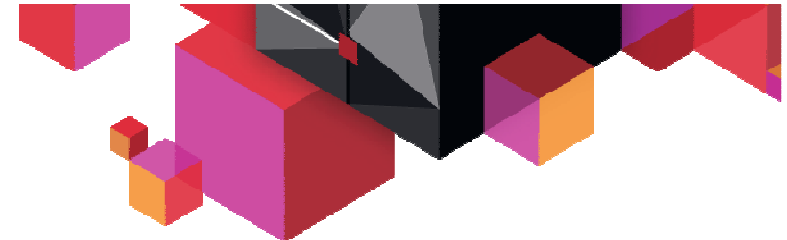
"Empower your workforce with 12 month access to over 1,000 hours of training spanning over 150 mainframe courses."



IMS Lab Customer Internship Program 2013

- **Opportunity for customers to work closely with IMS developers and testers as well as work on special projects in their area of expertise (DBA, System Programming, Application Development)**
 - IBM will provide mentorship and education
 - Customer provides travel and living expenses
- **Planned 3rd Quarter 2013 at IBM Silicon Valley Lab in San Jose, California**
- **Preliminary planning tasks**
 - Getting input from customers and/or customer advocates regarding topics in order to build the best curriculum
- **Contact Tori Gonzalez for more information**
 - gotori@us.ibm.com





European IMS Technical Symposium 2013 / 2014

- Changing the timeframe! Moving it to Q1 instead of Q4!
- Keeping same location: KTC in Königstein, Germany

- Save the date: March 17 to 20 2014

▪ Your education for 2013

- Check country-specific IBM events
- Check GSE Organization events <http://www.gse.org/>
 - IMS User's group meetings in Benelux, Germany, France, Spain, UK, ..
 - Enterprise Modernization user's group
 - Conferences



	Date	Event	Venue
GSE	April 15-16	GUIDE Executive Club	Venice IT
IBM	April 22-26	IBM Systems Technical University 15% discount for GSE Members	Noordwijk-aan-Zee NL
GSE	April 25-26	Belgium/Luxembourg Region Annual Conference	Spa BE
GSE	May 07-08	European Enterprise Modernisation for z/OS	London UK
GSE	May 07-08	Jazz Collaboration Lifecycle Management Europe	London UK
GSE	May 13-17	European Operations Technical Conference	Boeblingen DE
GSE	June 05-07	German Region Annual Conference	Dresden DE
GSE	June 10-12	Nordic Region Annual Conference	Helsinki FI
IBM	June 10-14	IBM System z Technical University 15% discount for GSE Members	Munich DE

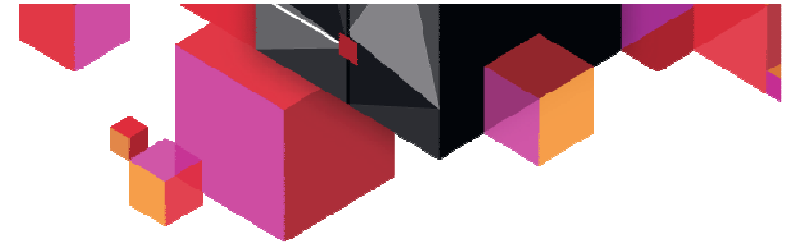


IBM IMS Technical Symposium

March 17 - 20, 2014

Koenigstein, Germany





Conclusion

- **General Information about IMS Tools**

- [IMS Tools page](#)

- **IMS Tools library**

- [IMS Tools library page](#)

- **IBM developerWorks**

- <http://www.ibm.com/developerworks/data/products/ims/index.html>
 - External IBM website with articles, tutorials and demonstrations
- <http://www.ibm.com/developerworks/rfe/>
 - Join the RFE community today in DB2. IMS will come soon !

- **IBM Redbooks**

- [IBM IMS Version 12 Technical Overview](#)

[IMS V13 preview](#)

