



Lotusphere<sup>®</sup> 2005

# ENVISION

DECISIONS

Développement :

Domino Designer & Workplace Designer

Herbert Hilhorst – Lotus pan-EMEA Technical Sales

Olivier Bourgeot – Lotus pan-EMEA Technical Sales

Best of Lotusphere 2005

Vendredi 11 février 2005 – Paris La Défense

# Agenda

- Stratégie des outils Lotus software
- Domino Designer
- Workplace Designer
- Résumé

# Stratégie des outils Lotus Software

Etendre la population de “développeurs” selon leur rôle

Pour des utilisateurs avec des compétences différentes

Optimisation des outils pour chaque plate-forme

Interaction entre outils & plate-formes

## Utilisateurs fonctionnels/Administrateurs

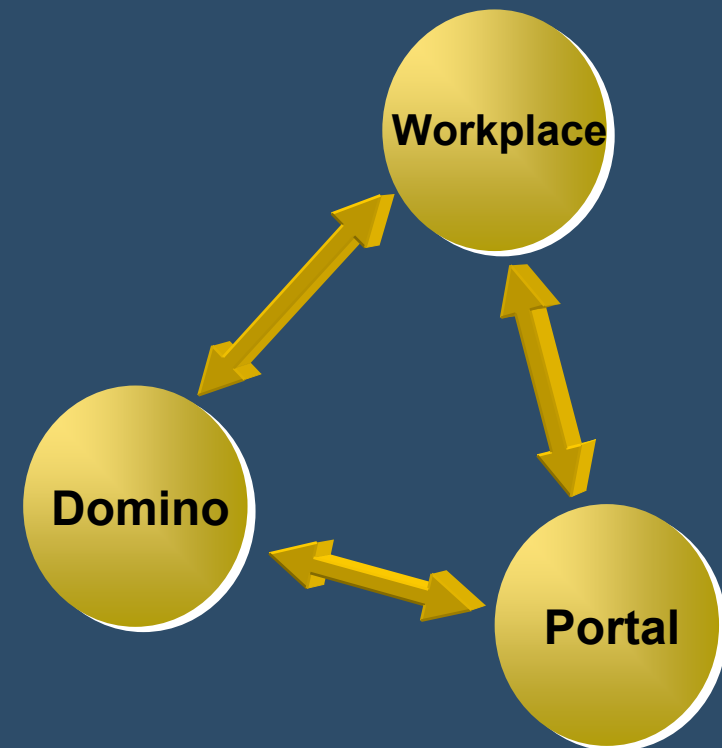
- ✓ Besoin d'outils simples à utiliser (orienté tâches)
- ✓ Workplace Builder

## “Développeurs” fonctionnels

- ✓ Besoin d'outils visuels et productifs
- ✓ **Domino Designer** & Lotus Enterprise Integrator
- ✓ **Workplace Designer**

## Développeurs J2EE

- ✓ Besoin d'outils puissants et variés
- ✓ WebSphere Studio/Rational Application Developer + Toolkits



# Une application Workplace

ENVISIONS

DECISIONS

GOOD MEMBERS DISCUSSION FORUMS

Forum	Posts	First Post	Last Post
Appreciate the Good Member Campaign	1	1	12/15/03 09:42 AM
Good Members Policy	10	21	12/15/03 09:37 AM
Indications Database	10	32	12/14/03 05:02 PM
Content Search	17	20	12/14/03 02:39 PM
Search Activity Database	9	19	12/14/03 11:56 AM
Good Members File	7	9	12/15/03 02:54 PM
Questions in the Comments	25	48	12/15/03 12:06 PM
Questions Definition	29	102	12/14/03 01:19 PM
Customer Service Case Study Database	6	14	12/15/03 03:41

Composant discussion

IBM Lotus Workplace - Microsoft Internet Explorer

File Edit View Favorites Tools Help

Address http://

Lotus Workplace

Denise Shaw | 1 am available | December 2, 2004

Workplace Builder Administration My Favorites... Edit my profile Logout

YourCo Home My Workplace Human Resources Marketing Central

Mail Calendar Address Book Documents Web Conferences Applications Learning Search Downloads

Applications

Show: My Applications

Find Applications

Name	Type	Last Update
Budget Control System	DPBank Application	11/7/03 10:21AM
Contract Manager	DPBank Application	11/4/03 2:00PM
Quality Discussion	Discussion	7/23/03 9:51PM
Quality Task Force	Project	11/7/03 10:21AM
EMCR Project Notebook	Project	11/4/03 2:00PM
EMCR Management Forum	Discussion	7/23/03 9:51PM
HR Library	Document Library	11/7/03 10:21AM
Policies and Standards	Document Library	11/4/03 2:00PM
Resource Tracker	DPBank Application	7/23/03 9:51PM
Trouble Tickets	DPBank Application	7/23/03 9:51PM

Page 1 of 1

People Finder

Search by: Name

Search for:

Advanced Search

Quick Contacts

Design (3)

- Amy Travis
- Charlie Hill
- Marty Moore
- Meggan Todd

Work (2)

- Assya Azrieli
- Harry Hornreich
- Marty Moore
- Shiri Lupovich

Applet STLinksApp started

MEMBERS

Actions

- Moderator (1)
  - Diana Franco
- Members (6)
  - Jane Hakiel
  - Kyle Chang
  - Laura Clemons
  - Natasha Smith
  - Peter Blakeney
  - Sean Goss

Mon équipe

Application Domino

Application	Version	Platform	License	Status
IBM Lotus Workplace	5.0.0	Windows	Perpetual	Running
IBM Lotus Notes	5.0.0	Windows	Perpetual	Running
IBM Lotus Domino	5.0.0	Windows	Perpetual	Running
IBM Lotus WebSphere	5.0.0	Windows	Perpetual	Running

Application Domino

Trouble Tickets

Back to Folder | Previous Form | Next Form

OurCo Simple Trouble Ticket Form

Problems getting your message across?

Ticket Number: 7320493756

Requester: Tom Igne

Date Submitted: 1/15/2003

Short Description: Unable to connect to network

Detailed Description: I cannot obtain a DHCP IP address from the network port in my office. Everything was fine yesterday. Did something change in the network over night?

All Open Trouble Tickets will be addressed within one business day!

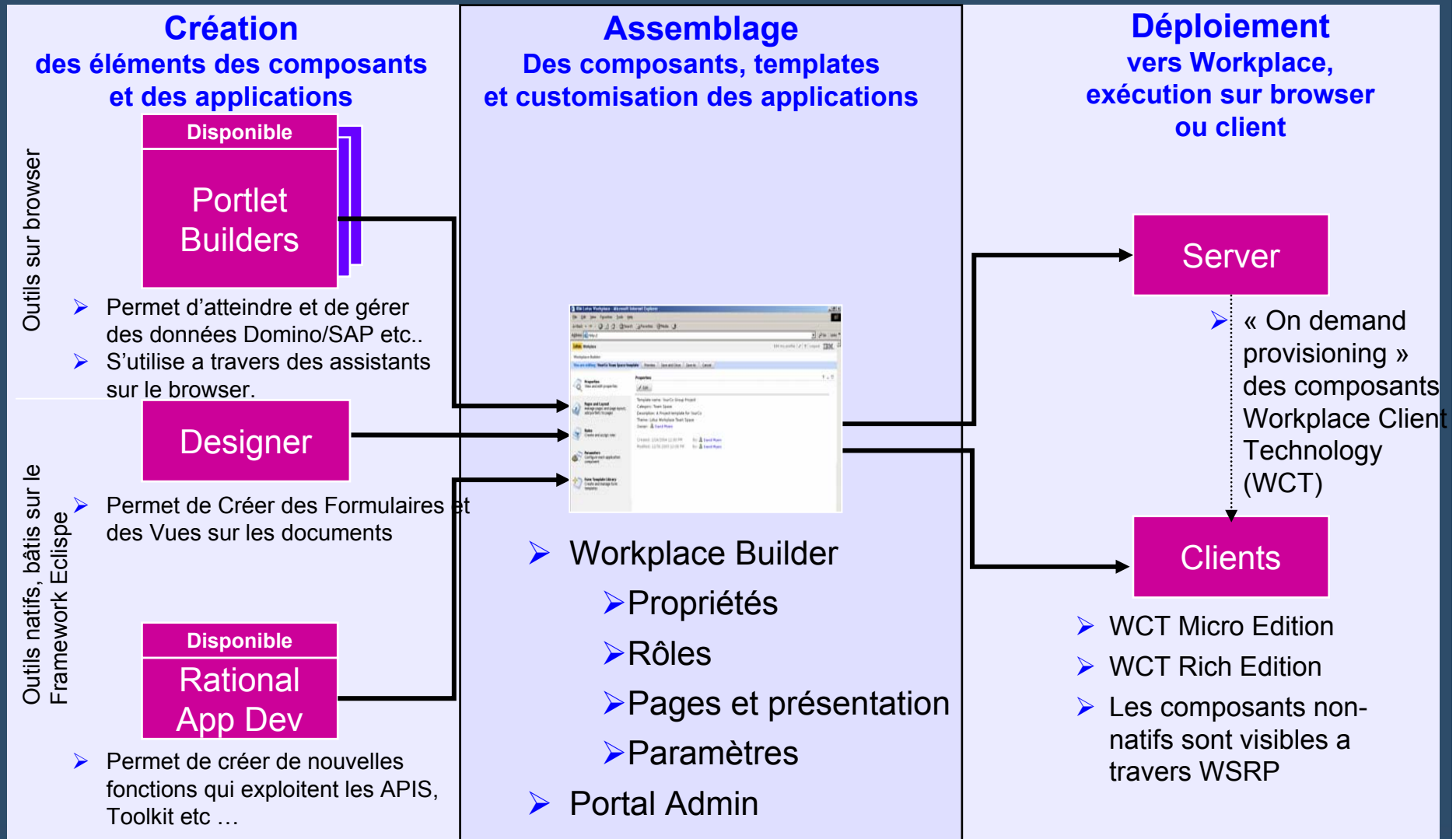
Formulaire, workflow

HR@Purdue

Cost Center	Description of Job	Description of Organizational Unit	Description of Position	Job
1000	Director	Corporate services (D)	Director of Corporate Ser	50011878
1000	Manager	Internal Services (D)	Manager of Internal Serv	50011879
1000	Administration	Corporate services (D)	Secretary to HCO Corpora	50011876
1000	Administration	Internal Services (D)	Secretary for Internal Se	50011876
1000	Security officer	Internal Services (D)	Security officer (Germany)	50011271
1000	PC service technician	Internal Services (D)	PC service technician (D)	50011316
1000	Director (US)	Dallas Administrative Sta	Director - Operations	50029024
1000	PC service technician	Internal Services (D)		50011316

Contenu d'entreprise





# Domino Designer 7

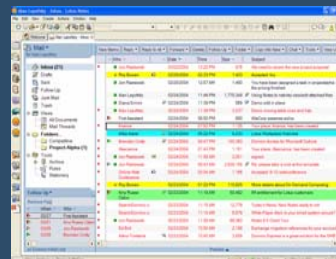
- Rappel: Qu'est ce qu'une application Domino ?
- Domino Designer 7
  - Facilité d'utilisation
  - Productivité
  - Nouveaux fonctions
  - Web services
  - Support SGBDR (DB2)
- Démonstration

# Applications Domino -> Workplace

ENVISION

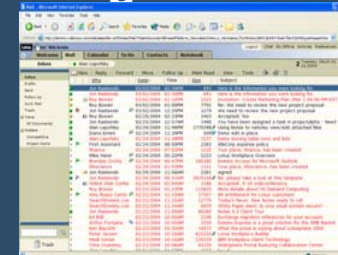
DECISIONS

Desktop  
Productivity  
Applications  
Visual Basic  
.Net

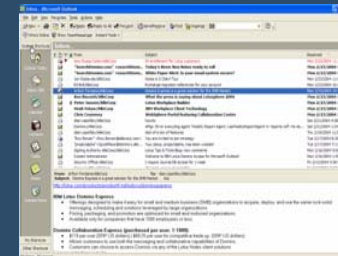


Lotus  
Notes

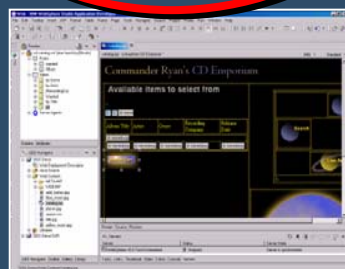
Navigateur Web



Microsoft Outlook



Workplaces/Portals



Java Server Pages



Mobile Devices, Smart Phones, PDAs

Enterprise Data



# Domino Designer

The screenshot displays the Lotus Domino Designer interface for editing a form titled "Main Topic - Form". The main workspace shows a form design for a "Discussion" form. The form is divided into several sections:

- Discussion Main Topic:** Contains fields for "tmpFrom", "DateComposed", "timeComposed", "Private", and "Expire".
- Subject:** A text field labeled "Subject".
- Category:** A dropdown menu labeled "WebCategories" with a sub-label "Enter a new category:" and a "NewCats" button. Below it is another dropdown labeled "Categories".
- Attach a file:** A "File Upload" button with a note: "Only one file can be attached at a time. See [Using Database document](#) to attach multiple files."
- Content:** A text area labeled "Body" and a "ViewList" field.

On the left, the "Recent Databases" pane shows the current database: "Discussion database samp" (url: /pluto/0=lotus/Discuss.nsf). Below it is a tree view of the project structure, including "Framesets", "Pages", "Forms", "Views", "Folders", "Shared Code", "Agents", "Web Services", "Outlines", "Subforms", "Fields", "Columns", "Actions", "Script Libraries", and "Shared Resources".

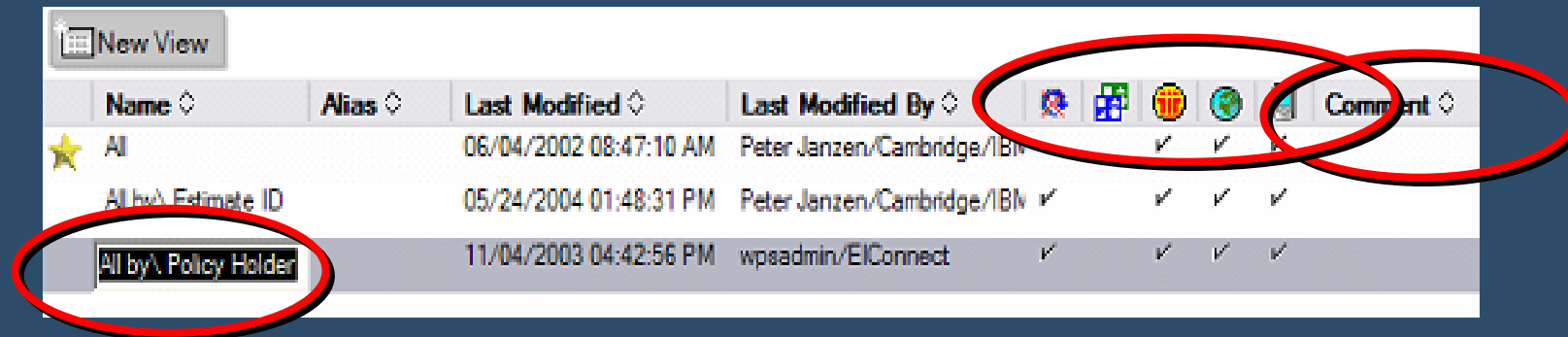
At the bottom, the "Objects Reference" pane lists the objects for the "MainTopic (Form)", including "Window Title", "HTML Head Content", "HTML Body Attributes", "WebQueryOpen", "WebQuerySave", "Target Frame", "JS Header", "onHelp", "onLoad", "onUnload", and "onClick".

The "MainTopic (Form) : Window Title" pane shows a formula for the window title:

```
StandardTitle := Subject + @DocDescendants(" (No Responses)"; " (1 Response)"; " (% Responses)");  
@If(@IsNewDoc; "New Topic"; @ViewTitle = "AuthorView"; Subject  
@ClientType="Notes"; StandardTitle; Subject)
```

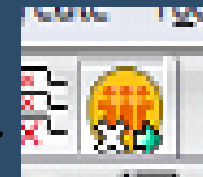


- Changements pour la liste de structure



- Bouton 'Signature' est disponible pour agents, services web et bibliothèques de script

- Smarticon 'Debug' et indication dans le toolbar

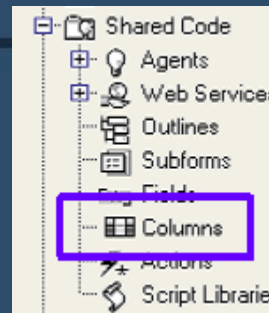


- Avertissement quand on ferme et possibilité de fermer toutes les fenêtres ouvertes



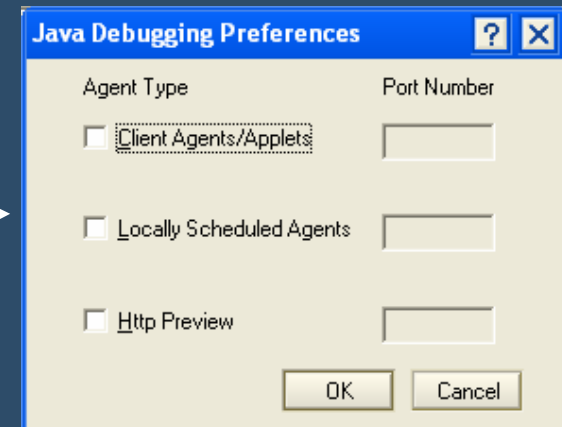
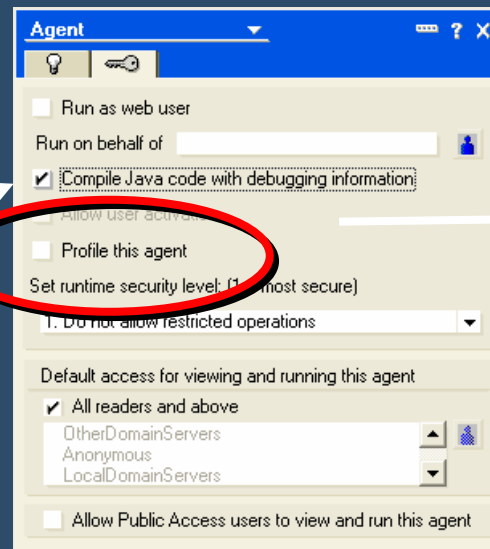
# Productivité

- Colons partagés



- Améliorations Java

- Java 1.4.2
- Support pour Java debugging



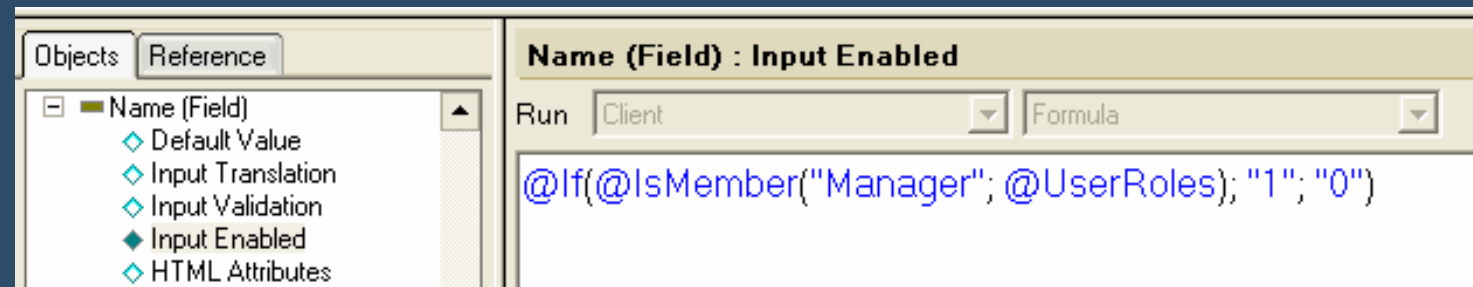
- Profiling des agents et services Web

full text search BE 10/15/2004 01:59:36 PM EDT

Class	Method	Operation	Calls	Time
Database	FTSearch		1	20
DocumentCollection	GetNextDocument		2	<
Document	[expandedname]	Get	2	<
Session	CurrentDatabase	Get	1	<
DocumentCollection	Count	Get	1	<
DocumentCollection	GetFirstDocument		1	<

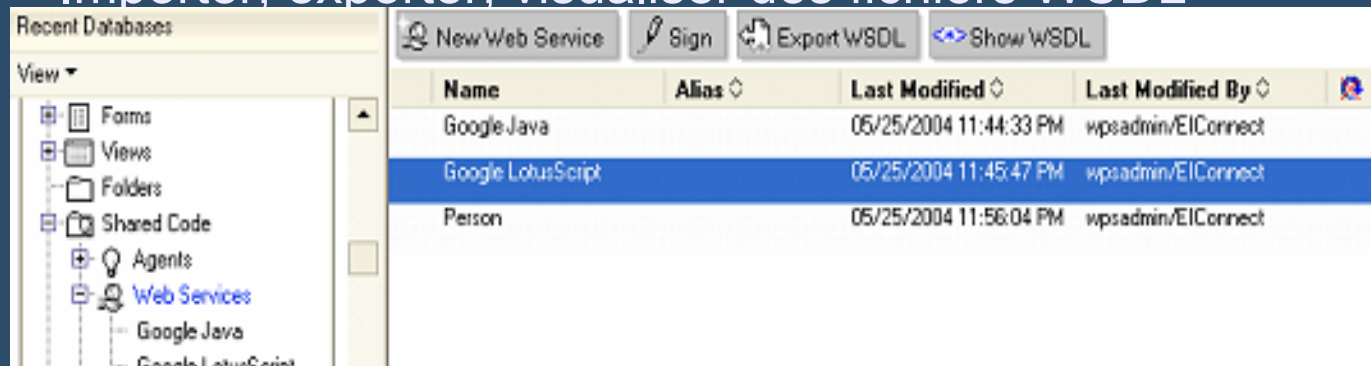
# Nouvelles fonctionnalités

- Sauvegarde automatique pour chaque masque (géré dans autosave.nsf)
- Bouton droite actions personnalisables
- Champs Notes a une formule pour les rendre éditable



- New @command and @functions
  - @PolicyIsFieldLocked, @IsEmbeddedInsideWCT, @AdminECLIsLocked, @DB2Schema, @IsDB2
- New LotusScript methods and properties
  - Méthodes NotesAgent.GetPerformanceDocument method & NotesDatabase.GetModifiedDocuments
  - Propriétés NotesDocumentCollection.UntilTime & NotesUIWorkspace.IsEmbeddedInsideWCT

- Serveur Domino comme hôte des services Web
  - ?WSDL, ?OpenWebService, cache
- Designer pour développer vos services Web
  - Importer, exporter, visualiser des fichiers WSDL



- Support pour LotusScript et Java
- SOAP 1.1 over HTTP; WSDL 1.1

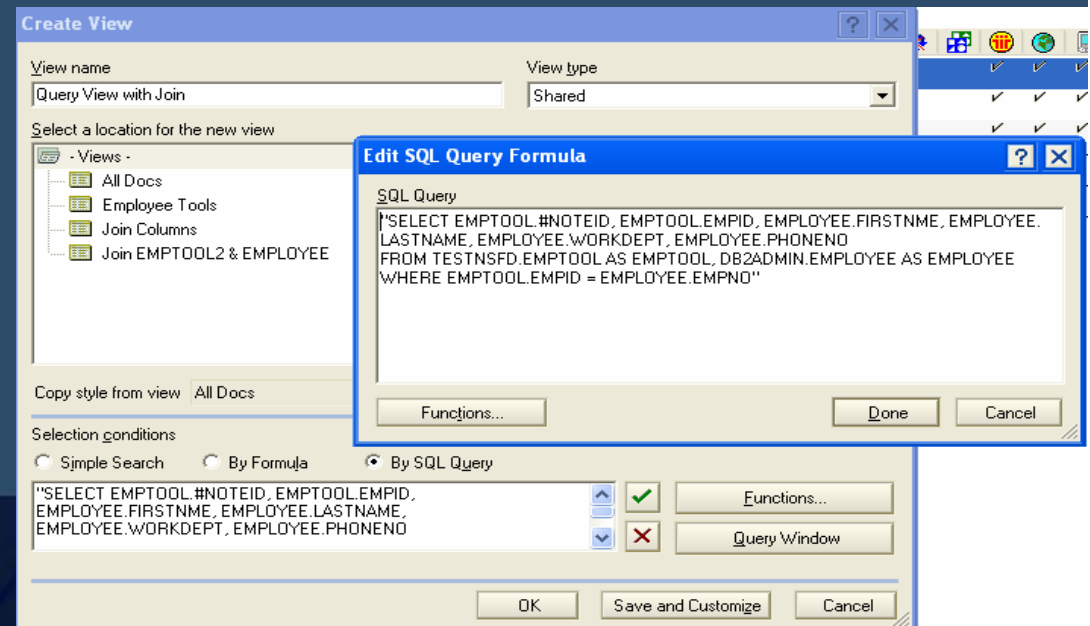
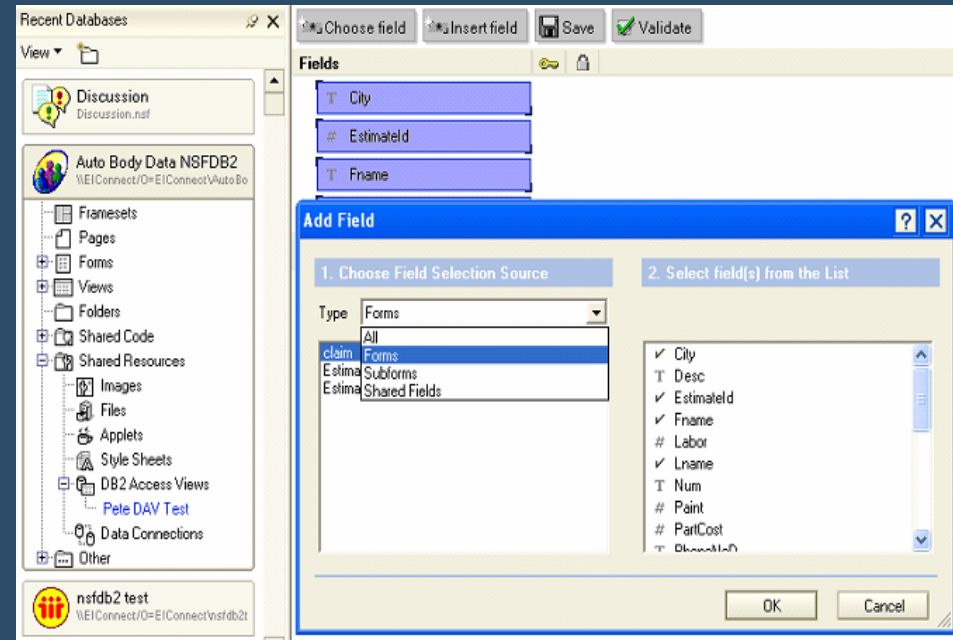
# Support SGBDR (DB2)

## ■ DB2 Access View (DAV)

- Organiser des champs dans des vues DB2
- Utiliser des formules SQL
- Exposer des données Notes aux applications DB2

## ■ ‘Query views’ – vue SQL

- Formule de sélection est une formule SQL
- Calculé dynamiquement, toute puissance SQL (jointure, etc)



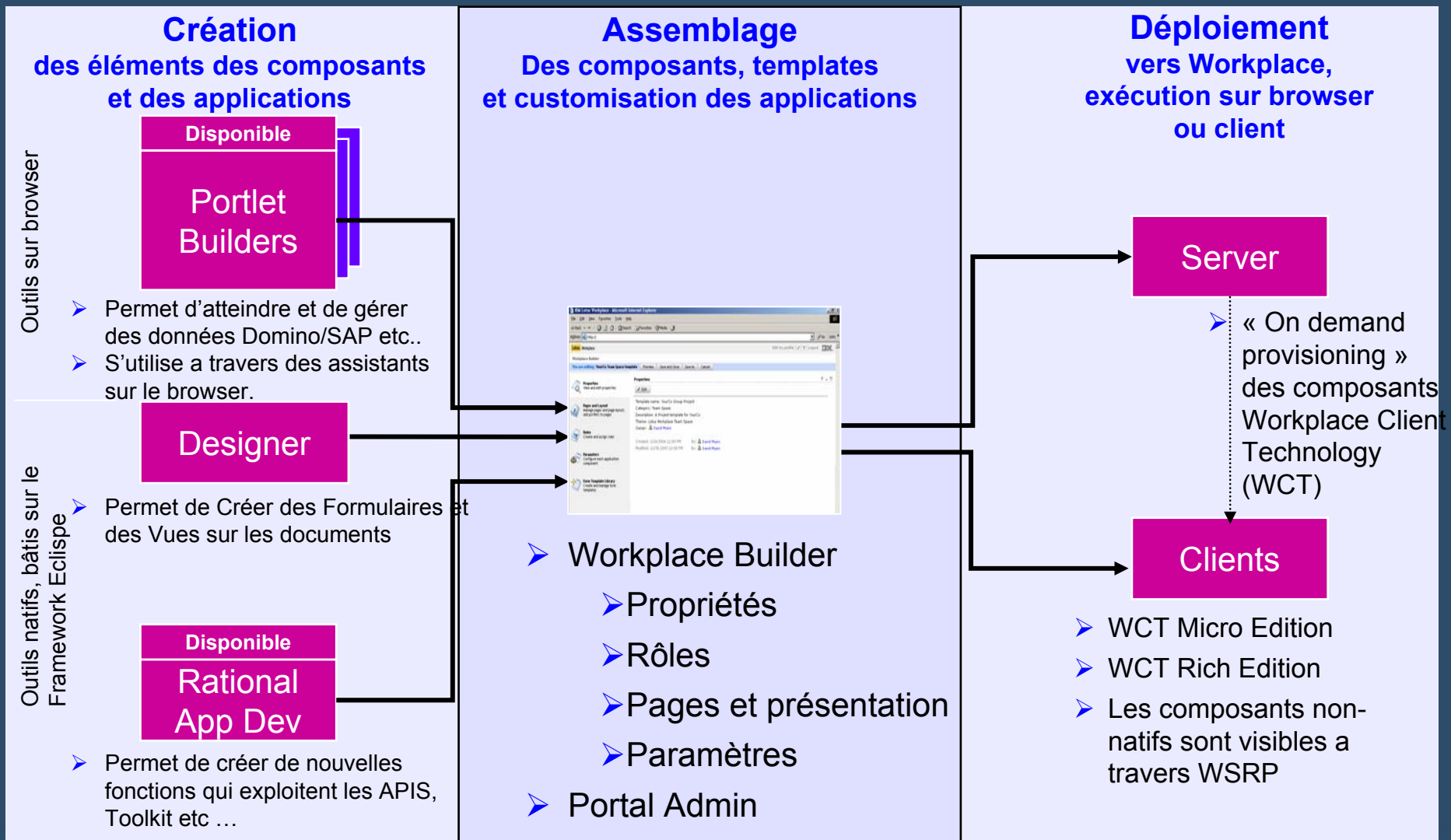
# Demonstration

ENVISION  
DECISIONS



# Workplace Designer

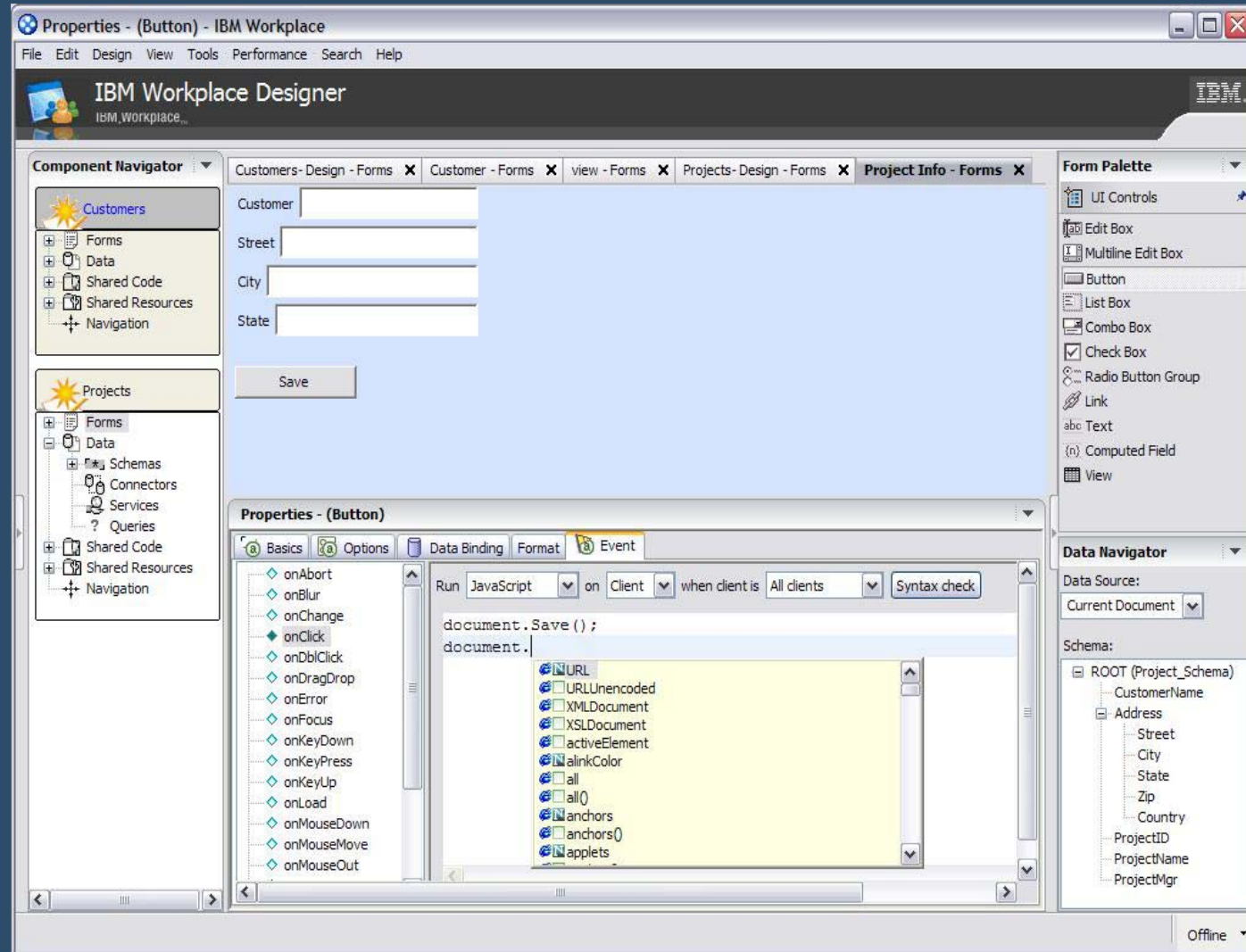
- Positionnement de Workplace Designer
- XML au cœur de Workplace Designer
- Déploiement des Workplace Application
- Démonstration via Screen Cam





# Workplace Designer

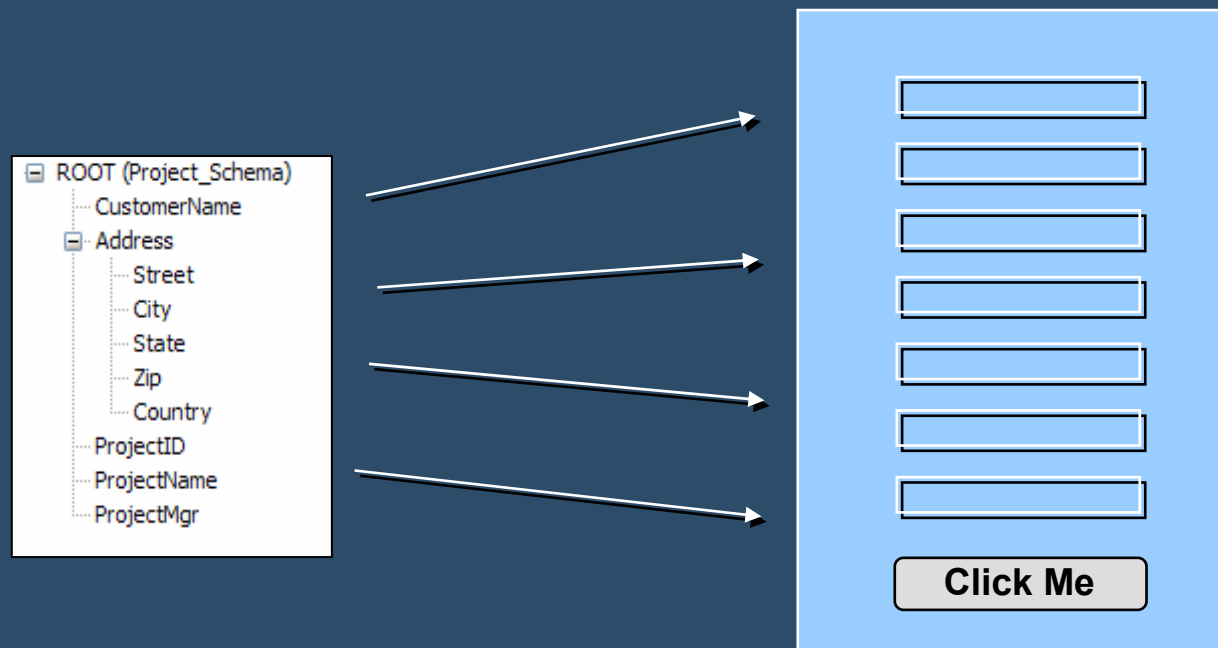
- Components
- Formulaire
- Controls UI
- Stockage XML dans une base relationnelle
- Editeur de XML schema
- Editeur JavaScript
- Document API



# Un outil “orienté document”

- Documents XML
  - Supporte un design hiérarchisé
  - Attachements
  - Documents Response
  - 3 niveaux de sécurité (Serveur, Stockage, Document)
  - Définit avec XSD Schémas et accéder à travers XPath
- Stockage dans un SGBDR
  - Évolutivité
  - Performance
  - Instances séparées (par utilisateur, composants ...)

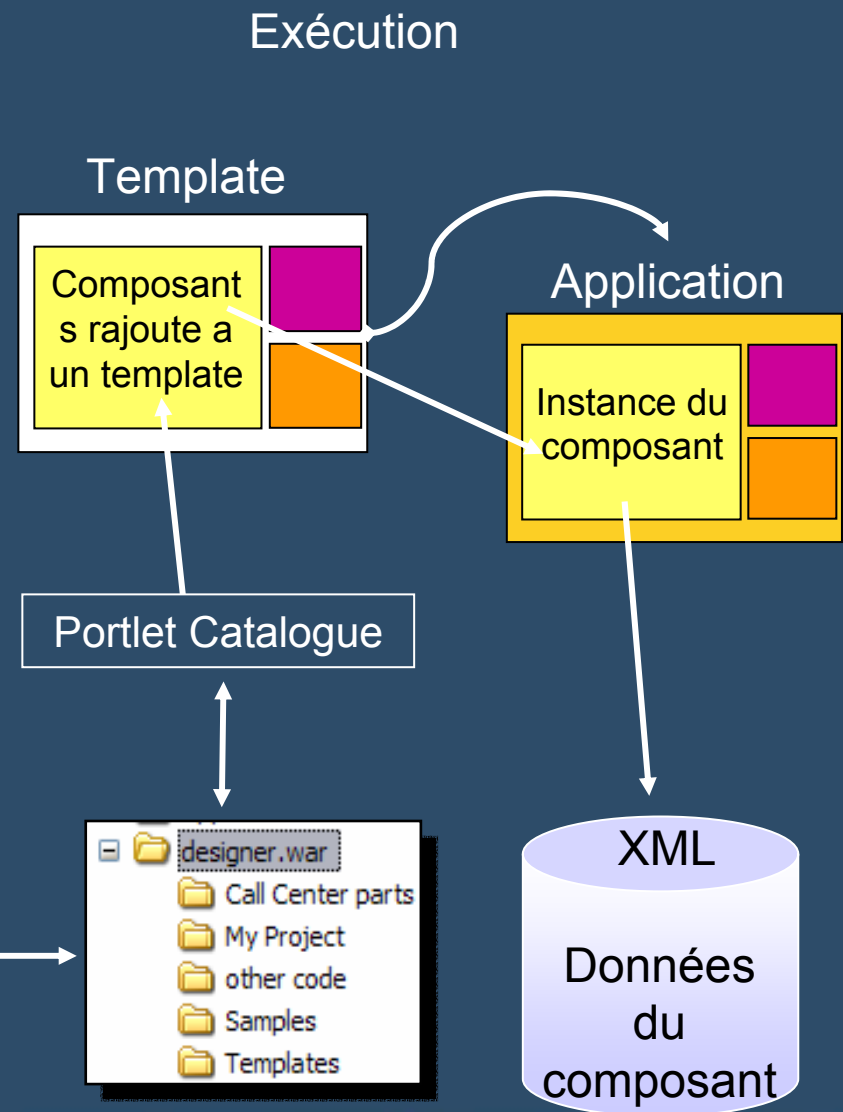
# Relation schéma et formulaire



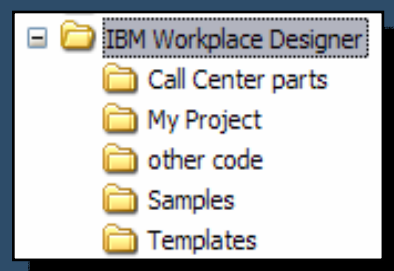
**Associe la représentation  
graphique avec le document  
grâce a la définition du schéma**

# De l'outil vers Workplace

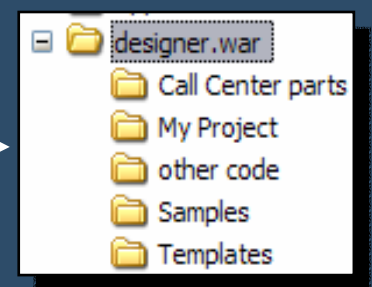
Développement		
Visual Editor	images	Script Editor
Schema Editor	Script libraries	Extensions and APIs



L'ensemble des ressources et stocke sur le système de fichiers



Déploiement vers le serveur



Les composants sont instanciés lorsque qu'une nouvelles application est crée depuis un template.



# Demonstration

- Screen Cam

# Résumé : deux nouveaux designers

## Utilisateurs fonctionnels/Administrateurs

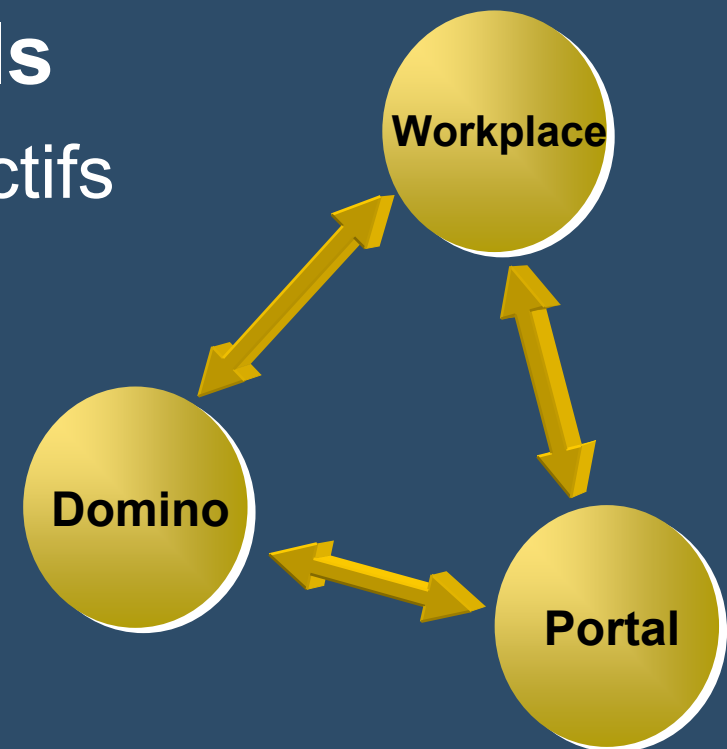
- ✓ Besoin d'outils simples à utiliser (orienté tâches)
- ✓ Workplace Builder

## “Développeurs” fonctionnels

- ✓ Besoin d'outils visuels et productifs
- ✓ **Domino Designer**  
& Lotus Enterprise Integrator
- ✓ **Workplace Designer**

## Développeurs J2EE

- ✓ Besoin d'outils puissants et variés
- ✓ WebSphere Studio/Rational Application Developer + Toolkits





ENVISION

Lotusp<sup>h</sup>ere<sup>®</sup> 2005

DECISIONS

