

8-10 JUILLET 2014 IBM BOIS-COLOMBES

# TECH ACADEMY



8-10 JUILLET 2014 IBM BOIS-COLOMBES



# TECH ACADEMY



## Accélérateurs de vente A l'usage des Business Partners

IBM Cloud & Smarter Infrastructure

André Deville [ad@fr.ibm.com](mailto:ad@fr.ibm.com) C&SI Technical Sales Manager

8-10 JUILLET 2014 IBM BOIS-COLOMBES



# Agenda



- Rappel sur les accélérateurs techniques
- Synthèse des sites de démo
  - ServiceEngage – Portail des offres SaaS
  - C&SI Demo
  - OpenTEC
- Enablement Technique (Business Partner Technical Enablement Portal)
- RedBook



## Le cycle de vente et ses « accélérateurs »

- Objectif : **Accélérer le cycle de vente d'une opportunité**
- Modes : démo standard ou personnalisée, workshop pour travailler la maturité du client sur ses besoins, poc, ..

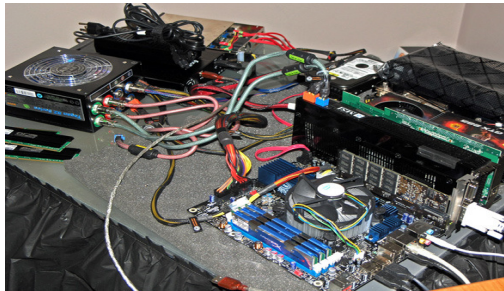
Découverte  
Qualification  
Crédibilité

POC

Ateliers  
(Discovery Workshop)

Evaluation produit

Maquette  
(Démonstrations personnalisées)



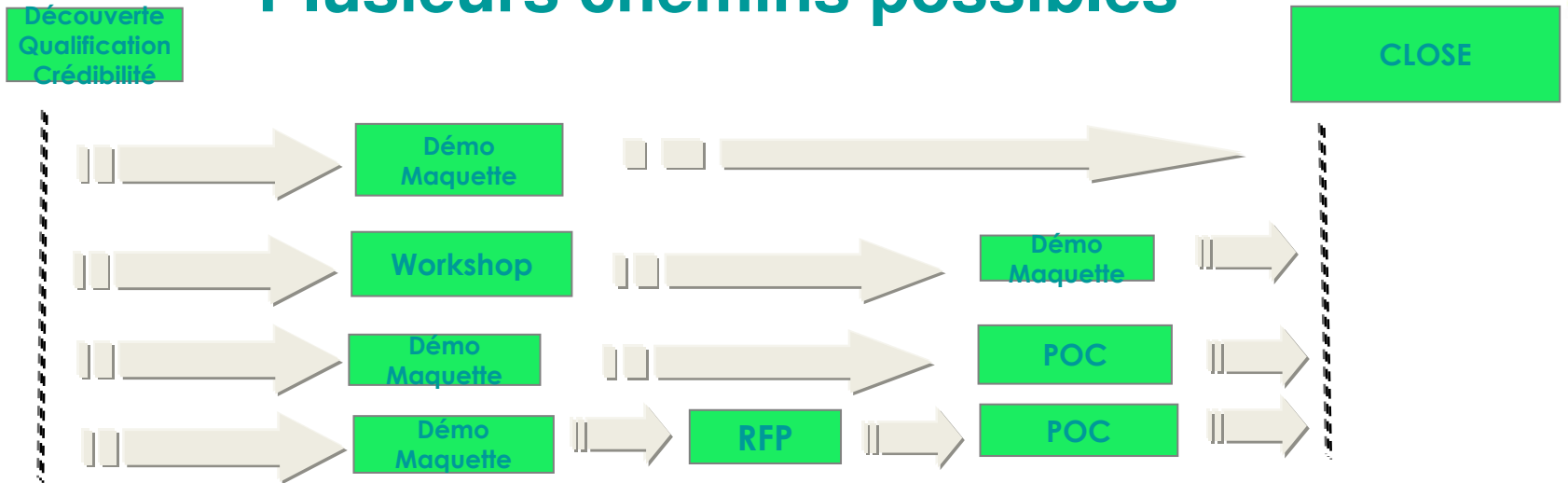
POT

Demo

BVA  
(Business Value Assessment)



# Plusieurs chemins possibles




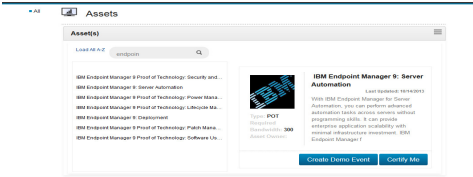

Mais certains ne sont pas efficaces.  
 Les accélérateurs doivent bien être alignés avec un cycle de vente :





# Synthèse sur les sites de démos



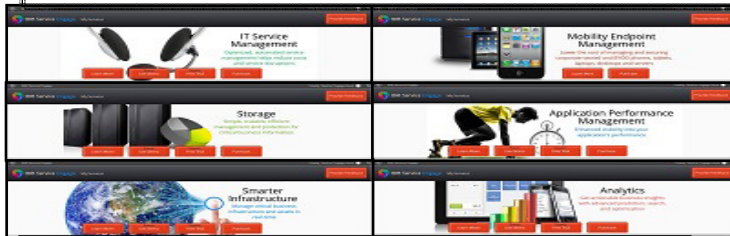
|  | CSIDE   | Open TEC   | Service Engage  |
|--|---|--|---|
| Url  | <a href="http://www.tivolidemos.com">www.tivolidemos.com</a><br> | <a href="https://opentec.uk.ibm.com">https://opentec.uk.ibm.com</a><br>or <a href="https://vpn.edu.ihost.com">https://vpn.edu.ihost.com</a> (France)<br> | <a href="http://www.serviceengage.com">www.serviceengage.com</a><br>   |
| VPN required                               | No  | Yes  | No  |
| Account needed                             | Yes   | Yes  | No (30 days trial)  |
| How to get access                          | <b>Accredited Partners</b><br><a href="mailto:cside@us.ibm.com">cside@us.ibm.com</a>  | Ask to your <b>local contact</b> to : put a demo/pot on OpenTec + getting an account   | Nothing to do   |
| List of available demos/Pots               | Yes   | Yes. If POT not available, ability to put a demo from CSIDE to Open TEC available  | SaaS Offerings only (scapm, workload automation, insight inventory, sccd).<br>Maas360 available on <a href="http://www.maas360.com">www.maas360.com</a> ) |
| Ability to save a customized configuration | Yes   | Yes  | No  |



**C&SI is enabling new routes to market that make it easier and faster to experience and acquire our on-premise and SaaS solutions**

## IBM Service Engage

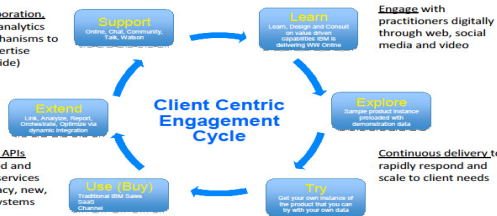
Learn • Explore • Try • Use (Buy) • Extend • Support



New low touch, high impact GTM enables new and existing clients to seamlessly adjust their management needs with new as a service offerings

**Social collaboration.** Insight and analytics as new mechanisms to provide expertise (Watson inside)

**Composition APIs** to link, extend and orchestrate services amongst legacy, new, and hybrid systems



**Licensing models** to address shifts to lower barrier to entry, consumption based purchasing and 'try and buy'



**New way** for engaging clients and partner via live tutorialled demos available 24x7



**New way** to POC your clients ... start a POC in 30 minutes, anytime, anywhere your client wants



**New way** to extend what your clients are already buying at lower total cost via Software as a Service



**New way** to accelerate the close



Les offres actuelles en mode SaaS : <https://www.ibm-serviceengage.com>



### For your IT

**Application Performance Management**  
Enhanced visibility into your application's performance

Learn More Live Demo Free Trial Purchase

Find root cause of application problems 90% faster

**IT Service Management**  
Optimized, automated service management helps reduce costs and service disruptions

Learn More Live Demo Free Trial Purchase

Improve cost functional processes, requests, and maintenance planning by 40%

**Workload Automation**  
Dynamically manage mission-critical composite application and system workloads

Learn More Live Demo Free Trial Purchase

Reduce labor costs by 90%

### For your business Assets

**Internet of Things**  
MAXIMO ASSET MANAGEMENT  
Optimize asset performance in an increasingly complex world

Learn More Live Demo Free Trial Purchase

Industry leaders are 92% more likely to use asset management analytics

**Inventory Insights**  
Anticipate demand, eliminate excess and reduce cost

Learn More Live Demo Free Trial Purchase

Reduces excess inventory and ensures parts availability for mission-critical assets by harnessing the inventory management capabilities of Maximo Asset Management with the analytical power of IBM SPSS

### For your mobile devices

**MaaS360**  
by Fiberlink, an IBM company

Products Solutions Why MaaS360 Trials and Tools Resources Partners About Us Community

The Leader in Cloud Mobility  
A Real MDM Difference  
MaaS360 Benefits  
Customer Success  
Cloud Ease

**Fiberlink Joins IBM**  
Transforming mobile management and security.  
Learn More >

Take the **Free 30-Day Trial**

Start Your Trial >

Mobile Device Management Leader

TECH ACADEMY

8-10 JUILLET 2014 IBM BOIS-COLOMBES





# IBM Service Engage

Nouveau site en bêta :

<https://my.ibm-serviceengage.com/>

Testez le !

IBM Service Engage

Catalog My Services About



Visibility. Control. Automation.



Simple



Fast



Cost-Effective



Secure

Your business runs fast and so do you. Delivering great results means you need to understand what's going on, prevent outages, and deliver at peak performance. You need simple, cost-effective and **secure** tools to get the job done. You want an engaging online experience to learn, explore, try and buy service management solutions that run SaaS and On Prem. You want to extend into the cloud. We've got what you want and need. Start Engaging ... Welcome to the new world of systems management.

[Learn more.](#)

Contact Us

Solutions to analyze, optimize, and manage your business



[Learn More](#)

#### Performance Management

- Find the Root Cause
- Improve Availability
- Reduce Outages



[Learn More](#)

#### Enterprise Asset Management

- Improve Asset Performance
- Increase Workforce Utilization
- Lower Maintenance Costs



[Learn More](#)

#### Enterprise Mobility Management

- Secure Mail
- Mobile Application Security
- Secure Document Sharing



[Learn More](#)

#### Asset Inventory Analytics

- Profiles Inventory
- Recommends Optimized Reorder Points
- Applies Recommendations



[Learn More](#)

#### IT Service Management

- Reduce help desk calls
- Improve first call resolution rate
- Reduce incident and request response times



[Learn More](#)

#### Workload Automation

- Central Scheduling Management
- Integration Hub
- Self Service

Contact Us



Try Live Demos and 30-day Free Trials

Let us enlighten you



TECH ACADEMY



## Accès à des environnement de démo en ligne : CSI Demo

- Un choix de démo ou POTs documentés , à télécharger ou à exécuter sur un environnement distant : [www.tivolidemos.com](http://www.tivolidemos.com)



The screenshot shows the IBM CSI Demo Library website. At the top, there is a navigation bar with the IBM logo, the text "CSI Demo Library", a search bar containing "Search demos", and a user login area with "Welcome cn=ad@fr.ibm.com/o=skytap [ Logout ]".

The main content area is divided into several sections:

- Welcome:** A central text block providing an overview of the site's purpose and instructions for accessing demos. It includes links for login and becoming acquainted with the system.
- Latest Hosted, Simulated and VM demo additions to the library...:** A green-highlighted section featuring three featured demos with their respective screenshots and brief descriptions:
  - IBM SmartCloud Monitoring Application Insight PoC - V1.2:** Describes a hosted demo for simplified usage of the C&SI Application Performance Management product set.
  - Integrated Cloud Delivery Solution:** Describes a lifecycle approach to cloud services delivery and management.
  - Netcool Operations Insight 1.2 Beta and Analytics:** Describes a demo showing how outages can be predicted and prevented using real-time event analytics.
- Demo news and upcoming events...:** A blue bar indicating "None scheduled".
- Latest Video demos...:** A row of six video thumbnails with titles:
  - Maximo for Transportation - "How Things Work"
  - Netcool Operations Insight 1.2 Beta and Analytics
  - Netcool Network Management for 4G LTE Beta
  - SmartCloud Application Performance Management Videos
  - IBM SmartCloud Analytics - Predictive Insights Interactive
  - IBM SmartCloud Control Desk Demonstrations

On the left side, there is a sidebar with a "CSI Demo Library" menu (Recently Added, All Demos, Browse the Library, FAQ), "Related Demo Sites" (Web Demonstrations on ibm.com, CSIDE hosting environment), and "RSS Feeds" (Most recent demos from this site, All demos from this site).

On the right side, there is a "Featured Solution Demos" section with two featured items: "SmartCloud Control Desk" and "SmartCloud Monitoring", each with a small icon and a link to explore more demos.

At the bottom left, there is a "T" logo, and at the bottom right, there is a "JES" logo.



# Exemple de démo



## IBM Tivoli Storage Manager for Virtual Environments 7.1

[Created by: Bob Mitchell/Austin/IBM, Troy Bennett/Seattle/IBM]

### Community Feedback

Rate this demo:



This demo is currently rated 0 out of 5, based on 0 votes.

[Read comments \(0\)](#)

[Add a comment..](#)

This demo was contributed by **Bob Mitchell/Austin/IBM**. Please contact Bob if you have questions about running or using this demo.

### CSI Demo Library

#### CSI Demo Library

#### Recently Added

All Demos

Browse the Library

Demos by Category

Demos by Product

Demos by Asset Type

Notifications

Screenshots

FAQ

### Recently Added Demos

**NEW!** [IBM SmartCloud Monitoring Application Insight PoC - V1.2](#) ★★

[Contributed](#) by Jing Yan Ma/China/IBM.

(6/2014) The IBM SCM-AI PoC offers simplified usage of the C&SI Applica

[Maximo for Transportation - "How Things Work"](#) ★★★★★

[Contributed](#) by Darren Kwasnycia/CanWest/IBM.

(5/2014) These videos introduce various functional components of the Ma

[Integrated Cloud Delivery Solution](#) ★★★★★

[Contributed](#) by Michael Jones/Chicago/IBM.

(4/2014) The Integrated Cloud Delivery Solution Demo provides a lifecycle

10 different scenarios that impact cloud delivery in a customer environmen

[Netcool Operations Insight 1.2 Beta and Analytics](#) ★★★★★

[Contributed](#) by Douglas McClure/Atlanta/IBM.

(4/2014) The Netcool Operations Insight and Analytics demo shows how O

preventing them from ever happening. It also shows that Real time Event

to identify problems quickly, reduce downtime, increase operations efficien

[IBM Tivoli Storage Manager for Virtual Environments 7.1](#) ★★

[Contributed](#) by Bob Mitchell/Austin/IBM.

(4/2014) This demo shows how IBM Tivoli Storage Manager for Virtual Envi

recovered at the individual file level, entire disk volumes, or full virtual ma

[Tivoli Workload Scheduler 9.2](#) ★★★★★

[Contributed](#) by Domenico Agostinacchio/Italy/IBM.

(3/2014) This VM contains the full TWS 9.2 application stack: MDM, FTA, C

application job plug-ins. Using this VM it is possible to demonstrate how to

Balancing.

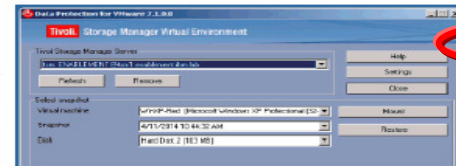
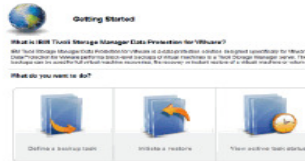
[Netcool Network Management for 4G LTE Beta](#) ★★★★★

[Contributed](#) by Janusz Stanson/Raleigh/IBM.

(3/2014) This demo features the use of the Netcool solution by a cellular

backhaul, and traditional L2 network.

### Description



There's always an Arquillian Battle Cruiser, or a Corillian Death Ray, or an intergalactic cyber-plague that is about to wipe out all electronic systems on our little planet, so mission-critical data must be protected. This lab places you in the role of a VMware administrator tasked with leveraging an existing Tivoli Storage Manager environment to provide scheduled protection and simplified recovery of mission-critical virtual machine data. The product's more efficient use of hardware and network resources makes protecting and recovering data in VMware environments easier than traditional in-guest backup methods. In these hands-on exercises, you will install and configure the product, create and run backup schedules, restore entire virtual machines, instantly restore disk volumes, and recover individual files.

#### Duration:

90 minutes

#### Target Audience:

TSM administrators and VMware administrators

The IBM Tivoli Storage Manager for Virtual Environments 7.1 demo runs in a hosted environment on CSIDE.

| Demo Type       | Access  |
|-----------------|---|
| Hosted on CSIDE | Run the <a href="#">IBM Tivoli Storage Manager for Virtual Environments 7.1 demo</a> on CSIDE. Give the demo about 5 minutes to start all the services then see the <a href="#">Setup</a> section below for more information. |

#### Included Software

IBM Tivoli Storage Manager Extended Edition 7.1  
IBM Tivoli Storage Manager for Virtual Environments 7.1  
Data Protection for VMware GUI  
Data Protection for VMware Recovery Agent  
VMware vSphere Client



# Détail sur une démo avec plusieurs images



Dashboard **Templates** Configurations Assets Projects Schedules Help



Back to Templates



New Configuration



Add to Configuration

## Template: Tivoli Storage Manager for Virtual Environments 7.1 Demo

### Metadata

Size: 262.2 GB

SVMs: 30

Networks: 1

Region: US-West

### Constituent Machines

Note: Click through to any VM to see details, including labels and credentials.

| VM                               | SVMs | CPUs | RAM    | Size    | Network adapters |
|----------------------------------|------|------|--------|---------|------------------|
| <a href="#">tsm71-ve-center</a>  | 6    | 2    | 5.9 GB | 40.2 GB | 1                |
| <a href="#">tsm71-ve-console</a> | 2    | 1    | 2 GB   | 32 GB   | 1                |
| <a href="#">tsm71-ve-tsm1</a>    | 6    | 2    | 5.9 GB | 150 GB  | 1                |
| <a href="#">tsm71-ve-vmware1</a> | 16   | 2    | 16 GB  | 40 GB   | 1                |

### Constituent Networks

| Network   | Type      | Subnet          | Gateway        | Domain             | Visible | NAT Subnet |
|-----------|-----------|-----------------|----------------|--------------------|---------|------------|
| Network 1 | automatic | 192.168.63.0/24 | 192.168.63.254 | enablement.ibm.lab | No      | N/A        |

### Template Information

Owner: TIDE-AG Administrator  
Created: Fri Apr 18, 2014

### Description

Docs: <https://tivolidemos.com/DemoLib.nsf/Demos/DDAFC4680F44676985257C7400695A23?OpenDocument>

### Added to these projects:

#### Tivoli Demos

My role: Participant  
Users: 7

### Notes

There are no notes.

### Schedules

There are no schedules using this template.



## Open TEC - France



- Objectif : mettre des images VmWare à disposition des BPs pour mener des démonstrations et des PoTs
  - Sans perdre de temps pour chacun à créer sa propre installation
  - Conditions : exclusivement pour démonstration
    - Avec durée de vie limitée sans engagement de récupérer les données
- Procédure d'accès
  1. Définir une démo existante pour un client/oppy existante
  2. Contactez Henri-François
  3. Vous recevrez certificats et lien pour accès vpn



# OpenTEC Europe – Certification



Une site europe avec une liste de POTs , événements à planifier

All



Assets

### Asset(s)

Load All A-Z

IBM Endpoint Manager 9 Proof of Technology: Security and...  
IBM Endpoint Manager 9: Server Automation  
IBM Endpoint Manager 9 Proof of Technology: Power Mana...  
IBM Endpoint Manager 9 Proof of Technology: Lifecycle Ma...  
IBM Endpoint Manager 9: Deployment  
IBM Endpoint Manager 9 Proof of Technology: Patch Mana...  
IBM Endpoint Manager 9 Proof of Technology: Software Us...

**IBM Endpoint Manager 9: Server Automation**  
Last Updated: 10/14/2013

With IBM Endpoint Manager for Server Automation, you can perform advanced automation tasks across servers without programming skills. It can provide enterprise application scalability with minimal infrastructure investment. IBM Endpoint Manager f

Type: POT  
Required Bandwidth: 300  
Asset Owner:

Create Demo Event   Certify Me



# OpenTEC Europe– Demonstration Event



All

Assets

Asset(s)

[Load All A-Z](#)

endpoint



- IBM Endpoint Manager 9 Proof of Technology: Security and...
- IBM Endpoint Manager 9: Server Automation
- IBM Endpoint Manager 9 Proof of Technology: Power Mana...
- IBM Endpoint Manager 9 Proof of Technology: Lifecycle Ma...
- IBM Endpoint Manager 9: Deployment
- IBM Endpoint Manager 9 Proof of Technology: Patch Mana...
- IBM Endpoint Manager 9 Proof of Technology: Software Us...



Type: **POT**  
Required  
Bandwidth: **300**  
Asset Owner:

## IBM Endpoint Manager 9: Server Automation

Last Updated: 10/14/2013

With IBM Endpoint Manager for Server Automation, you can perform advanced automation tasks across servers without programming skills. It can provide enterprise application scalability with minimal infrastructure investment. IBM Endpoint Manager f

[Create Demo Event](#)

[Certify Me](#)



# OpenTEC – Demonstration Event



■ All Assets

Asset(s)

Load All A-Z endpoint

IBM Endpoint Manager 9 Proof of Technology: Patch Management

IBM Endpoint Manager 9: Server Automation

IBM Endpoint Manager 9 Proof of Technology: Software Usability

Required Bandwidth: 300 Asset Owner:

Last Updated: 10/14/2013

With IBM Endpoint Manager for Server Automation, you can perform advanced automation tasks across servers without programming skills. It can provide enterprise application scalability with minimal infrastructure investment. IBM Endpoint Manager f

Create Demo Event Certify Me

Demonstration Event created.

Note: You will receive an email notifying you when your demo is ready to use





# OpenTEC – Demonstration Event



01

## My Events

- Upcoming
- Past
- Invites

### Demo: IBM Endpoint Manager 9: Server Automation : Demonstration

Instructor for this event

20  
Mar



IBM Endpoint Manager  
9: Server Automation



20th Start: 10:34 PM  
26th End: 10:34 PM



Demonstration Room  
For Judith Sissons  
IBM SWG Test  
Location

Judith Sissons



#### Event Details

Demo: IBM Endpoint Manager 9: Server Automation

#### Full Address:

IBM SWG Test Location, IBM Hursley Park, ,  
Hursley, Winchester, SO21 2JN

[View in Google Maps](#)

Attending: 0/1

All Selected Assets:

Checklist: 0/2 completed

Attending

- PDF Asset Flyer
- Amendable Asset Flyer
- Workbook PDF
- Presentation PDF
- Amendable Workbook

Invite Attendees

Order Catering

Edit Checklist

Cancel



# Enablement Technique



- **Nouveau Site d'enablement technique dédié aux Partenaires :**  
[www.ibm.com/partnerworld/csite/](http://www.ibm.com/partnerworld/csite/)

IBM PartnerWorld Program Products Solutions Services Search PartnerWorld

## Cloud & Smarter Infrastructure

Business Partner Technical Enablement Portal

The Cloud & Smarter Infrastructure Business Partner Technical Enablement Portal contains a variety of technical training content modules and self-paced courses developed by subject matter experts. Find your product solution area below to get started; there you will find content entries organized by product and by type. You can also use the Search fields to find and filter content.

**Search**

Title [v] [input type="text"] [magnifying glass icon] [plus icon]

Cloud and Data Center Operations

- ▶ Application Dependency Discovery Manager
- ▶ Business Service Manager
- ▶ Cloud Service Delivery
- ▶ Composite Application Manager
- ▶ Decision Support
- ▶ Monitoring

**Key of enablement types**

- lab** **On demand labs**  
Select labs offered on cloud-hosted infrastructure for access on demand. Upon enrollment, you are provided with a lab guide and 24 hours of access to a hosted virtual machine set for completion of the exercises.
- SPVC** **Self-paced virtual class\***  
SPVCs have all the elements of a traditional, multi-day instructor-led class in a self-paced format, including recorded lectures and exercise demos, student course books, and in some cases hosted on demand labs.
- doc** **Technical documents**  
Technical documents and presentations.
- video** **Videos**  
Short modules on a variety of technical topics. Videos often include product demonstrations.
- replay** **Web seminar replays**  
Recorded technical presentations by

**TEC** **-COLOMBES**



## On demand labs & Self Paced Virtual Classes



- Accès à une infrastructure avec un guide de cours pour faire des exercices

- Cours sur plusieurs jours avec un formateur. A distance.

### Search

Offering Type  Hosted On Demand Lab  🔍 +

### Search results

#### eLearning classes

Type  Title

|     |   |
|-----|---|
| lab | <a href="#">IBM Netcool Network Management 9.2 Implementation and Configuration</a>   |
| lab | <a href="#">IBM SmartCloud Analytics - Predictive Insights 1.2: Modeling and Analyzing Historical Data</a>                  |
| lab | <a href="#">IBM SmartCloud Analytics Log Analysis Workgroup Edition 1.1.0.1: Insight Packs</a>                              |
| lab | <a href="#">IBM SmartCloud for Application Performance Management: IBM Tivoli Composite Application Manager for MS Apps</a> |
| lab | <a href="#">IBM Tivoli Storage Manager 6.3 New Features and Updates</a>   |
| lab | <a href="#">IBM Tivoli Storage Manager 7.1 Node Replication</a>   |
| lab | <a href="#">IBM Tivoli Storage Manager 7.1 OC combo</a>   |
| lab | <a href="#">IBM Tivoli Storage Manager 7.1 Operation Center</a>   |
| lab | <a href="#">IBM Tivoli Storage Manager HSM for Windows 6.4 Introduction</a>   |
| lab | <a href="#">Post Pulse 2013 B06: IBM Maximo 7.5 Ad hoc Reporting</a>  |
| lab | <a href="#">Pulse 2013 A01: Unified Management of the Lifecycle of IT Assets</a>  |
| lab | <a href="#">Pulse 2013 A02: Linking Assets and Cls</a>  |

### Search

Offering Type  Self-paced Virtual Classes  🔍 +

### Search results

#### eLearning classes

Type  Title

|      |   |
|------|---|
| SPVC | <a href="#">Basic dashboard management with the Jazz for Service Management Dashboarding Service</a>                      |
| SPVC | <a href="#">Basic mobile dashboards using the Jazz for Service Management Dashboarding Service</a>                        |
| SPVC | <a href="#">Chinese: IBM Endpoint Manager 9 Platform Fundamentals</a>   |
| SPVC | <a href="#">Chinese: IBM TRIRIGA 10.3 Portfolio Self-Paced Virtual Class</a>  |
| SPVC | <a href="#">Curso virtual individualizado de Fundamentos do Tivoli Process Automation Engine 7.5 - Portuguese Version</a> |
| SPVC | <a href="#">Differences: IBM Tivoli Workload Scheduler for z/OS 8.5.1 Self-paced Virtual Class</a>                        |
| SPVC | <a href="#">Foundation Technologies for Cloud Service Delivery 7.2.2 Self-paced Virtual Class</a>                         |
| SPVC | <a href="#">IBM Automation Control for z/OS 1.1 Fundamentals Self-paced Virtual Class</a>                                 |
| SPVC | <a href="#">IBM Directory Integrator 7.1.1 Self-paced Virtual Class</a>   |
| SPVC | <a href="#">IBM Endpoint Manager 9 Console Operations Self-paced Virtual Class</a>  |
| SPVC | <a href="#">IBM Endpoint Manager 9 Platform Fundamentals</a>  |
| SPVC | <a href="#">IBM Endpoint Manager for Lifecycle Management - Remote Control</a>  |



## Avec accès à des labs



### Student Enrollment Confirmation

TTEHelp to: Andre Deville

19/06/2014 17:41

[Show Detail:](#)

▼ 1 attachment



SCAPI Modeling and Analyzing Data.pdf

IBM Cloud & Smarter Infrastructure Remote Lab

### IBM SmartCloud Analytics - Predictive Insights 1.2: Modeling and Analyzing Historical Data (E7523)

1.5 hours

#### Overview

This standalone lab introduces the student to the concepts of modeling data sources for the Predictive Insights analysis engine. Users then analyze historical data that was retrieved from a simplified monitoring system. The analysis learns the normal behavior for the data and then creates alarms when system performance is measured outside of these learned boundaries. Users select various alarms and drills into the data captured by Predictive Insights.

#### Lab exercise guide

SCAPI Modeling and Analyzing Data.pdf

See attached file.

#### Instructions to access your hands-on lab session

1. Use your web browser to access the hands-on lab: <https://cloud.skytap.com/vms/f7b8fb83564ae11df669a43bd375aa49/desktops>
2. Your session is in a suspended state the first time you access it. To run your image set keep all images selected and simply click the **Run** button from the menu.

View: [List](#) | [Thumbs](#)   Sort: [Name](#) ▼▲ | [Status](#) ▼▲

Select:     With selected:

|  |  |
|--|--|
| <input type="checkbox"/> Powered Off                 | <input type="checkbox"/> Powered Off                 |
| <input checked="" type="checkbox"/> E7310- team1winA | <input checked="" type="checkbox"/> E7310- team1winB |
| 1 CPUs<br>40 GB                                      | 1 CPUs<br>40 GB                                      |

3. Your session will be suspended after 30 minutes of inactivity. When you are ready to resume your student exercises, follow the same procedure above to



# Technical Roadmaps



- Pour vous guider dans les formations pour apprendre par étapes

## Technical enablement roadmaps

Navigate the learning options to gain the skills you need.

- ▶ Cloud
- ▶ Cloud Management
- ▶ Endpoint Management

### IT Service Management

[IBM SmartCloud Control Desk Technical Enablement Roadmap](#) 2014/04/10

### Maximo Asset Management

[Maximo Asset Management Technical Enablement Roadmap](#) 2013/10/22

### Storage Management

[IBM Tivoli Storage Manager 6.4 Technical Enablement Roadmap](#) 2013/10/16

### Storage Productivity Center and Virtual Storage Center

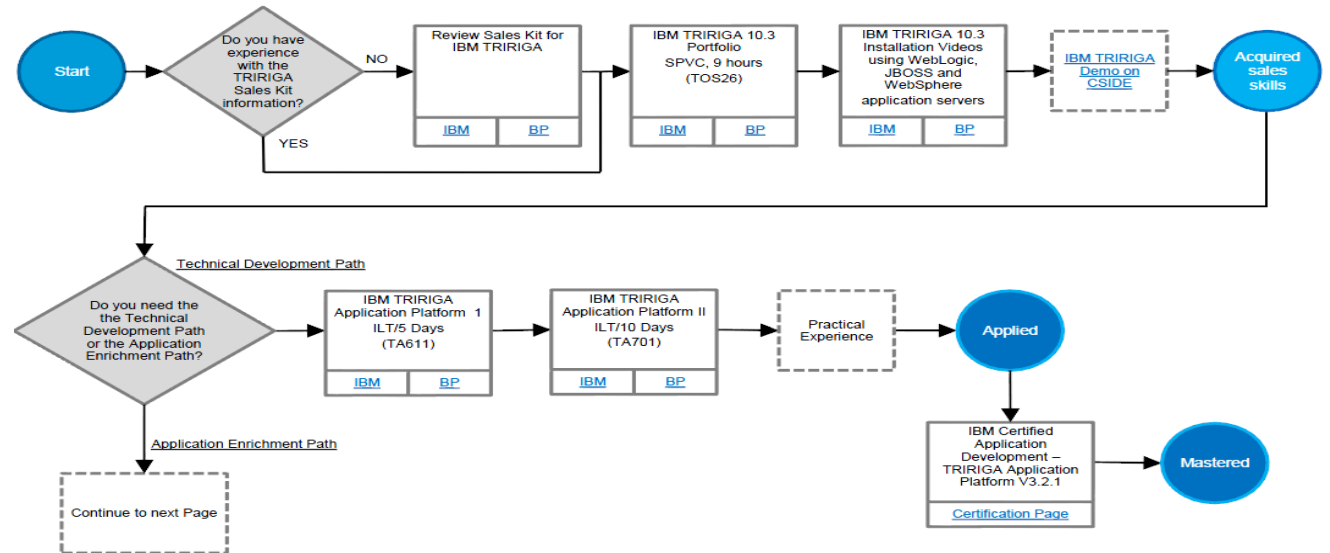
[Storage Productivity Center Technical Enablement Roadmap](#) 2013/10/11

### TRIRIGA

[TRIRIGA Technical Enablement Roadmap](#) 2014/02/16

## IBM Tivoli TRIRIGA 10.3 Roadmap

Audience: Internal and Business Partner





## Proofs of Technology (PoT) à Bois Colombes



- <http://www-05.ibm.com/fr/events/tec/?ca=forum>



**Technical Exploration Center**  
Technical Exploration Center

### Séminaires et ateliers techniques clients et partenaires

*Un centre pour découvrir la richesse des logiciels IBM*

Bienvenue à l'IBM Technical Exploration Center (TEC).

Situé à Bois-Colombes, le TEC vous ouvre ses portes et vous invite à découvrir les fonctionnalités des produits et solutions IBM.

Nous proposons deux types d'événements :

- Les **Explorations of Technology (EoTs)** qui permettent de découvrir, au travers de présentations, les solutions Software d'IBM et les réponses qu'elles peuvent apporter aux problématiques métier de nos clients et de nos partenaires
- Les **Proofs of Technology (PoTs)** qui permettent à nos clients et à nos partenaires de tester les dernières versions de nos produits et solutions au cours de petits ateliers techniques après une présentation magistrale.

Les PoTs peuvent, dans certains cas, nécessiter une connaissance préalable du produit et s'adressent généralement aux Directeurs Informatiques, aux Architectes, aux Spécialistes Informatiques ou aux Consultants Métiers.

Les EoTs et PoTs visent à démontrer les solutions et produits IBM au travers d'un ensemble de présentations théoriques et de démonstrations, et ne sont donc pas un cours complet sur les sujets abordés.

Pour approfondir vos connaissances et utiliser les produits dans les meilleures conditions, IBM met à votre disposition des offres de formations complètes consultables sur le site : [ibm.com/fr/formation](http://ibm.com/fr/formation).

Cliquez sur chaque visuel ci-dessous pour obtenir le détail des sessions

|                    |                         |                    |                        |
|--------------------|-------------------------|--------------------|------------------------|
| Business Analytics | Collaboration Solutions | Industry Solutions | Information Management |
| Rational           | Security Systems        | Tivoli             | WebSphere              |

**En savoir plus**  
→ IBM Forum Paris

**Liens utiles**  
→ IBM Forum Paris  
→ IBM Newsletter France  
→ IBM en Région  
→ IBM Service clientèle  
→ Tous les événements IBM France

**Une planète plus**  
→ Une planète plus intelligente : à quoi cela ressemble-t-il?

**Un trafic intelligent**  
Réseaux d'électricité intelligent




# Et toujours les RedBooks !




- <http://www.redbooks.ibm.com>
- Une version pour smartphone est disponible !!

- IBM Redbooks®
- Advanced Search
- Software
- Storage
- Systems & Servers
- System Networking
- Solution topics
- IT Business Perspectives
- Residencies
- Workshops
- Additional Materials
- How to order
- About Redbooks
- Contact us
- Newsletter
- RSS feeds

IBM Redbooks >



**Announcing the new IBM Redbooks mobile app for iOS and Android**  
What you need, when and where you need it.



#IBMRedbooks

The new IBM Redbooks mobile app provides on-the-go access to Redbooks publications, announcements, and social sites. Available for [iOS](#) and [Android](#) devices.



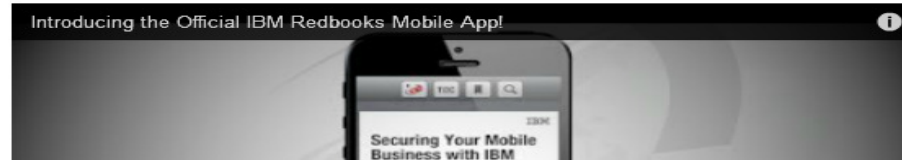
#### Feedback

[redbooks@us.ibm.com](mailto:redbooks@us.ibm.com)

#### Connect w/ IBM Redbooks



#### Introducing the Official IBM Redbooks Mobile App





ANY  
QUESTIONS  
?





## Open TEC



- Objectif : mettre des images VmWare à disposition des BPs pour mener des démonstrations et des PoTs
  - Sans perdre de temps pour chacun à créer sa propre installation
  - Conditions : exclusivement pour démonstration
    - Avec durée de vie limitée sans engagement de récupérer les données
- Images populaires : CLM et SSE 4.0.x
- Procédure d'accès
  1. Suivez une formation
  2. Contactez Henri-François