

IBM Rational Manual Tester

Highlights

- **Manual test creation, execution and control**
- **Test step reuse palette to enable sharing of content across multiple tests**
- **Assisted data entry & data verification during test execution to reduce human error**
- **Rich text editor supporting image and document attachment to individual test steps**
- **Multiple test result types and customizable data fields to personalize results collection and simplify analysis**
- **Imports preexisting Word or Excel-based manual tests**
- **Generates spreadsheet-ready results data for advanced reporting and analysis**
- **Supports usage by distributed teams**

Few organizations have learned to master test automation. As a result, manual testing remains an important part of the testing process - experience indicates upwards of 75% of all testing is performed manually. There are many reasons project teams rely on manual testing:

- *Recruitment of subject-matter experts with no testing background to perform testing*
- *Insufficient test automation experience*
- *Lack of test automation tools*
- *Poor to nonexistent test automation-ready interfaces in the applications under test*

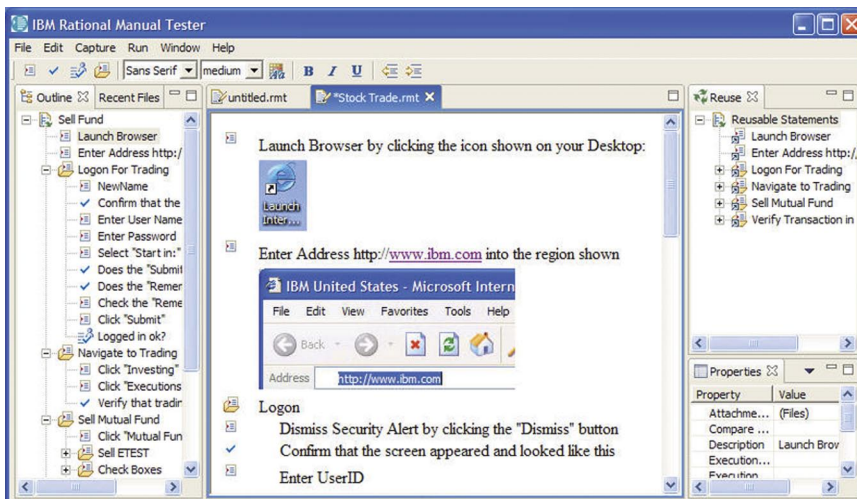


Figure 1. IBM Rational Manual Tester is a manual test authoring and execution tool that promotes test step reuse to reduce the impact of software change on testers and business analysts. It adds control and organization to any manual testing process, improving the efficiency and speed of efforts to measure application quality.

IBM® Rational® Manual Tester addresses the needs of teams performing at least a portion of their testing manually. It overcomes the ad hoc nature of hands-on verification techniques to ensure optimal testing and defect discovery in what can otherwise potentially be a high investment, low return activity.

Manual Testing – Harder than it looks

Manual testing is deceptively simple at first glance but quite challenging when improperly implemented. Project teams quickly learn the difficulty of successfully managing multiple spreadsheets and other test and test result storage mediums. They note the high volume of rework that results from the lack of reuse and modularity across the many test scripts involved. And they struggle to minimize human error and inconsistency. The very objective of manual testing – evaluating application quality and exposing defects – is jeopardized by these inefficiencies.

By dedicating focus on manual testing productivity, Rational Manual Tester helps teams overcome risks to the success of a project. The result is greater focus of time and effort on completing high value, informative manual tests, building a better picture of application quality and greater exposure of functionality requiring improvement before release.

Advanced Test Creation and Maintenance

Rational Manual Tester promotes the usage of linked content – the ability to define particular test step blocks as reusable components that can be shared across multiple tests. The advantage is not simply reuse, a time and cost saving measure under any circumstance. The advantage is also greater control over test script quality and consistency. Modification of linked content is automatically applied to all test scripts using that content, ensuring change is communicated accurately to the entire test team.

The test editor supports customizable font options, image capture and file attachment, enabling testers to clearly communicate test steps. With Manual Tester, teams can vastly reduce the ambiguity that often plagues most other methods used to define and deliver test step direction.

Simplified through assistance

Rational Manual Tester reduces the likelihood of human error in the areas most prone to mistakes – data entry and data verification. First, Manual Tester stores data within a custom test script field that enables the tester to paste in the data without having to type it directly. Second, data copied from an application user interface is automatically compared with expected values, automating the comparison and storing the result in a consolidated test report.

Custom decision points can also be added to manual tests. Granular verification points are used to record the success or failure of particular events. Reporting points ask the tester to enter broader observations about the task at hand. All of this information is collated within reports that can be exported into CSV-based documents for storage and analysis in any tool of choice, including common spreadsheet applications.

Addresses diverse needs

Rational Manual Tester allows test customization to reflect a team's internally defined process metrics and values. Custom fields can be defined and assigned to individual test steps to capture greater test direction as well as to store additional information gathered during test execution. Testers can also assign file attachments to any step during test execution – a simple method for attaching screenshots or other non-textual information that would be useful for test result analysis. Both the Reuse folder storing reusable test step blocks as well as private data stores can be placed on a network file share or under change control. Manual Tester can be used on any Windows® PC, supporting usage by both distributed teams and mobile workers. It also maintains tests and test results in a centralized location regardless of team distribution and composition, ensuring test assets remain easily accessible and reportable.

Built on open standards

Rational Manual Tester is built upon both the Eclipse architectural framework and its test, trace and monitoring extension, named Hyades. Both are open source projects that provide shared, open source services across tooling environments that target application development, testing, deployment and monitoring. This infrastructure provides benefits ranging from the elimination of proprietary datastore formats to enabling support for both internal and third party customization and contribution. An investment in tools based on Eclipse and Hyades avoids vendor lock-in and encourages future innovation.

Integral part of the IBM Software Development Platform

IBM Rational Manual Tester is an integral component of the IBM Software Development Platform. The IBM Software Development Platform is the industry's most complete and powerful solution for software system creation and application lifecycle management. It provides automation support for essentially all aspects of software development. Further it unites team members by enabling them to share information effectively with each other and between their tools.

Component of the IBM Rational Professional Bundle

IBM Rational Manual Tester is included in IBM Rational Professional Bundle, comprised of all the desktop tools an enterprise needs to design, construct, and test J2EE/Portal/Service-oriented applications, in a single purchase vehicle with one maintenance contract to manage.

IBM Rational Services

A variety of service offerings are available to complement IBM Rational tools and best practices to help you build the capabilities you need in a combination that's right for your business. Our services are designed to help you build team skills, reduce the time to productivity when implementing a new solution, and to maximize the return on your investment in IBM Rational tools.

- *IBM developerWorks: Rational is the technical resource for the community of development professionals using or evaluating IBM Rational tools and best practices. developerWorks: Rational offers a variety of downloads, resources, discussion groups, and education designed to help you utilize IBM Rational solutions to best advantage.*
- *IBM Rational software training offers a curriculum that includes courses covering all the software development capabilities. A blended curriculum of instructor-led and Web-based training provides a variety of options to suit your organization's education needs.*
- *The IBM Rational worldwide staff of professional services consultants bring years of experience to help you lay a solid foundation for successful software development projects. You can engage Rational professional services on large-scale customized consulting projects that are tailored to meet your organization's unique needs, or you can engage your local account team for short-term assistance with a single challenge. Several types of "packaged" services are also available, including offerings that provide an objective assessment of your software development capabilities, deploy a new tool or methodology, or help you produce tangible assets through a facilitated workshop.*
- *IBM Rational Customer Support helps ensure that your project keeps moving forward with the help you need, when you need it. These maintenance programs offer efficient problem resolution with both online access to tens of thousands of technical notes, patches, and upgrades, as well as direct access to a talented team of support engineers. IBM Software Maintenance is the standard maintenance offering, and Technical Support Account Services can supplement this, according to your business requirements*

IBM Rational software

Rational® software from IBM helps organizations automate and integrate the core business process of software development. Rational products, services and best practices power the IBM Software Development Platform, the premier platform for teams who discover, develop, and deploy software assets in business applications, embedded systems, and software products. This modular and complete solution enables teams to adopt a business-driven development approach based on open standards, including the Eclipse framework. The result is differentiated business performance. Additional information is available at ibm.com/rational and ibm.com/developerworks/rational/rationaleedge, the monthly e-zine for the Rational community.



IBM Rational Manual Tester hardware and software requirements

- Operating System
 - Windows® 2000 Professional
 - Windows 2003 Server
 - Windows XP Professional
 - Windows NT 4 (latest SP only)
- Processor
 - Intel® Pentium® III 500MHz
 - Intel Pentium IV 1.4GHz
- Available RAM
 - Minimum: 256 MB
 - Recommend: 512 MB
- Available Disk Space
 - 500 MB installation directory per product

© Copyright IBM Corporation 2004
IBM Corporation
Software Group
Route 100
Somers, NY 10589
U.S.A.

Printed in the United States of America
10-04
All Rights Reserved.

IBM is a trademark of International Business Machines Corporation in the United States, other countries, or both.

IBM, Rational, the IBM logo, ClearCaseLT, ClearCase, Professional Bundle, and developerWorks are trademarks or registered trademarks of IBM in the United States and/or other countries.

Microsoft, Microsoft Windows XP, 2003 and 2000, and Windows NT are trademarks or registered trademarks of Microsoft Corporation.

Red Hat is a registered trademark of Red Hat, Inc.

SUSE is a registered trademark of SUSE AG.

Linux is a registered trademark of Linus Torvalds.

Intel and Pentium are registered trademarks of Intel Corporation.

All other names are used for identification purposes only and are trademarks or registered trademarks of their respective companies.

ALL RIGHTS RESERVED.

Made in the U.S.A.

Other company, product or service names may be trademarks or service marks of others.

The Rational Software home page on the Internet can be found at **ibm.com/rational**.

The IBM home page on the Internet can be found at **ibm.com**.

♻️ Printed in the United States on recycled paper containing 10% recovered post-consumer fiber.

GC34-2463-01