

**SOA Health and Governance:
*Smart SOA™ Fitness Delivers Value***



Michael McCarthy
Vice President, Portfolio Management
IBM GTS Middleware Services

How is Your SOA Health?

Check Your SOA Health...

- Is everything working as well on the inside as it appears to be on the outside?
- Is your SOA implementation ready to scale for enterprise wide demands?
- Are you experiencing chronic, nagging issues?



*... and Avoid SOA
Rescue Missions*

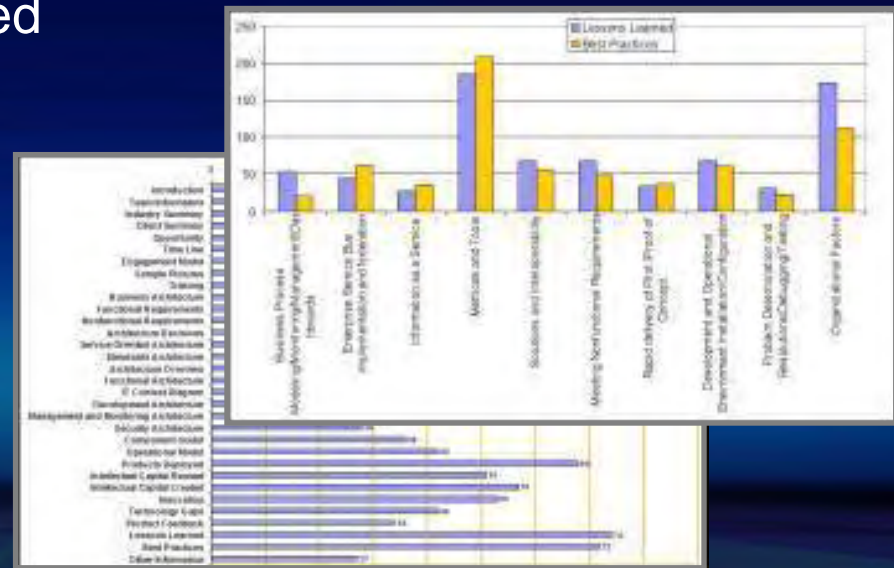
In today's economic climate you need to make sure you are maximizing the value of your SOA implementation

Trust IBM to Help

Lessons Learned Help IBM Understand Clients' SOA Health

Cross-IBM global deep dive analysis of 200 SOA deployment experiences:

- 750 Lessons Learned
- 650 Best Practices



*** New!**

White Paper Now Available

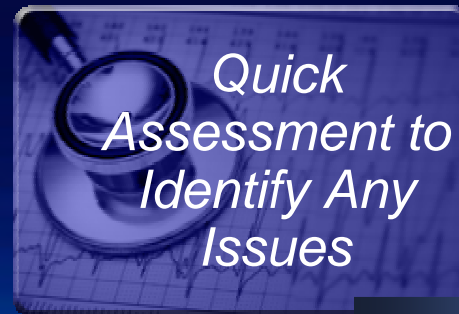
Service-oriented architecture: Follow a clearly-marked path for success
Best practices and lessons learned—findings from “best of the best” SOA Foundation deployments

IBM SOA Healthchecks – Diagnostic Services



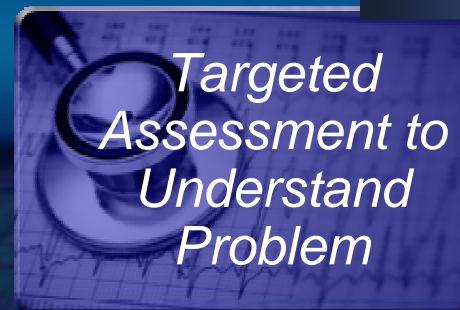
Healthchecks

Triage Workshops

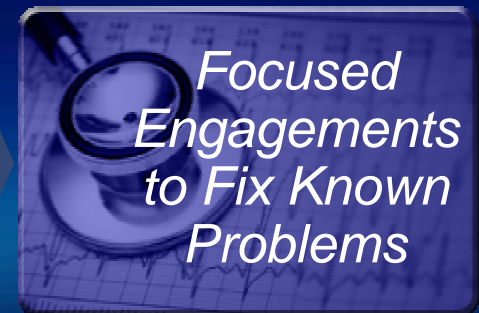


OR

Specialized Diagnostics



Treatments

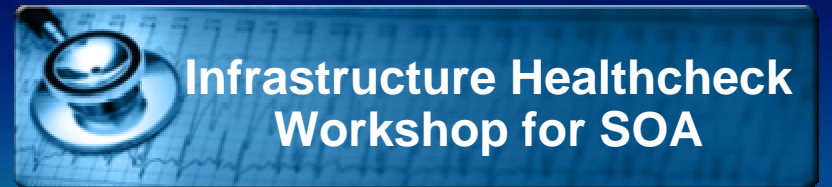


IBM SOA Healthcheck Coverage



Treatment Areas

- Application Reuse
- Service Use & Governance
- Service Security



Treatment Areas

- Infrastructure Flexibility
- Middleware Support
- Service Management

Whether you are...

...here or here or here



Infrastructure Areas for SOA Health

Infrastructure Flexibility

Is your SOA meeting the demand spikes and configured to easily handle changes?

Middleware

Is your SOA platform robust enough to handle the transaction volume with integrity?

Service Management

Do you have the visibility and control to manage your services?



Infrastructure Fitness for SOA



Healthy Attributes:

- Workloads and resource virtualization
- Platform flexibility
- Assured connectivity
- Managed quality of service
- Effective problem isolation and fix
- Visibility and control of services and changes

Service performance depends on infrastructure flexibility

Common Infrastructure Symptoms

Infrastructure Flexibility

- *Performance issues with demand peaks?*
- *Problems in tuning the system?*
- *Systems changes cause issues?*

Middleware

- *Scalable for SOA?*
- *Communications inconsistencies?*
- *Guaranteed connectivity possible?*

Service Management

- *System performance difficult to manage?*
- *Services changes cause surprises and not controlled?*
- *Infrastructure availability inconsistent?*



IBM Infrastructure Healthcheck Services supporting SOA



Key Specialized Diagnostics:

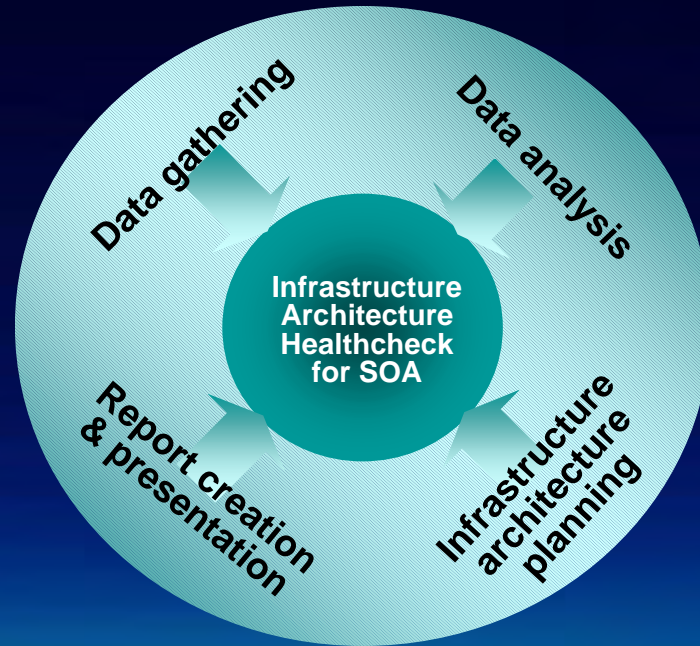
- Infrastructure Readiness Assessment for SOA
- Healthcheck Services for Web Application Server
- Healthcheck Services for Web Portal
- Service Management Workshop for SOA
- Infrastructure Architecture Healthcheck for SOA



Featuring Infrastructure Architecture Healthcheck for SOA



Each engagement includes 4 phases:



Fixed price/fixed scope with two starting points:

New SOA environment:

- Three-week engagement
- Assesses two “What If Scenarios”
- Delivers an infrastructure architecture Healthcheck for SOA report

Extending SOA:

- Five-week engagement
- Analyzes infrastructure monitoring data
- Assesses two “What If Scenarios”
- Delivers an infrastructure architecture Healthcheck for SOA report

IBM Infrastructure Treatments for SOA

IBM Professional Services:

- SOA Integration Services
- Application Infrastructure Services
- Service Management Services
- Identity & Access Management Services

Some Hardware and Software “Prescriptions” Available

Infrastructure Flexibility

- *WebSphere Application Virtualization*
- *Systems Virtualization*

Middleware Support

- *WebSphere Middleware for SOA*

Service Management

- *Tivoli Service Management for SOA Products*

Applications and Services Areas for SOA Health

Application Reuse

Are you able to transform your legacy systems as services? Have new services been developed to optimize reuse?

Service Use & Governance

Is there an awareness across the Business and IT community of the services available for reuse?

Service Security

Have proper security and identity management controls been enacted for services?



Application and Services Fitness for SOA

Healthy Attributes:

- Optimize leverage of existing assets
- Services built for reuse
- Services reused effectively
- Governance processes instituted
- Common service registries and repositories
- Common service security administration
- Identities propagated and managed

Drive development cost savings, efficient operations and high security

Common Applications and Services Symptoms

Application Reuse

- Existing functions not leveraged?
- Business processes locked in application silos?
- New services not reusable?

Service Use & Governance

- Duplicate services developed?
- No centralized repository for services?
- “Rogue” services exist?

Service Security

- Administered on a per application basis?
- Nonexistent between web applications and existing enterprise systems?
- Application-specific for the management of services identity?



IBM Application and Services Healthchecks for SOA



Key Specialized Diagnostics:

- Legacy to SOA Point of View
- SOA Governance Maturity Assessment
- SOA Security Assessment
- SOA Technical Review – Application Architecture

Featuring Application and Services Healthcheck Workshop for SOA

Find opportunities to improve the reuse of applications and services, service use and governance, and service security

*2-3 day interactive
workshop that identifies
areas that need further
assessment*

- Collaborative sessions
- High-level maturity assessment of your Architecture, Application and Methods
- Uses IBM's Services Integration Maturity Model (SIMM)

Benefits

- Identifies problem areas
- Recommends ways to address gaps
- Provide results in a short amount of time

IBM Application and Services Treatments for SOA

IBM Professional Services:

- Legacy to SOA Services
- SOA Security Services
- SOA Governance Services
- SOA Strategy Offering
- SOA Implementation Planning Offering
- SOA Design, Development, and Integration Offering

Some Hardware and Software “Prescriptions” Available

Application Reuse

- *Rational Service Lifecycle Tools*

Service Use & Governance

- *WebSphere Service Registry and Repository*
- *Rational Asset Manager*
- *Tivoli Service Management Products*

Service Security

- *Tivoli Security Products for SOA*
- *WebSphere DataPower*

A Focus On Governance

Application Reuse

Service Use & Governance

Service Security



IBM SOA Governance and Service Lifecycle Management

Agenda

- Governance of Smart SOA
- Value of a Federated Registry/Repository approach
- Rational Asset Manager (RAM) enhancements
- WebSphere Service Registry and Repository (WSRR) enhancements



Continually enhanced based on client requirements
and experience

On-Going Enhancements

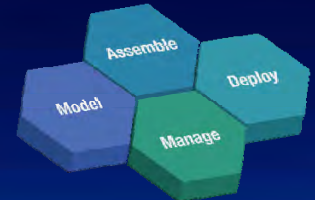
March
2006

SOA Governance announcement (SGMM v1)



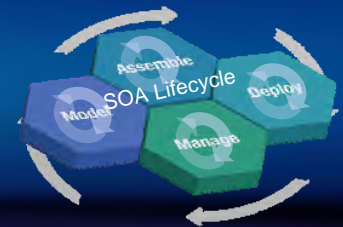
October
2006

SOA Governance and Service Lifecycle Management



December
2006

Empowering the A in SOA

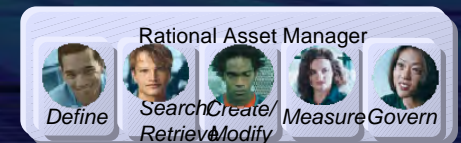


March
2007

SOA Quality Management

April
2007

Federated Registry/Repository



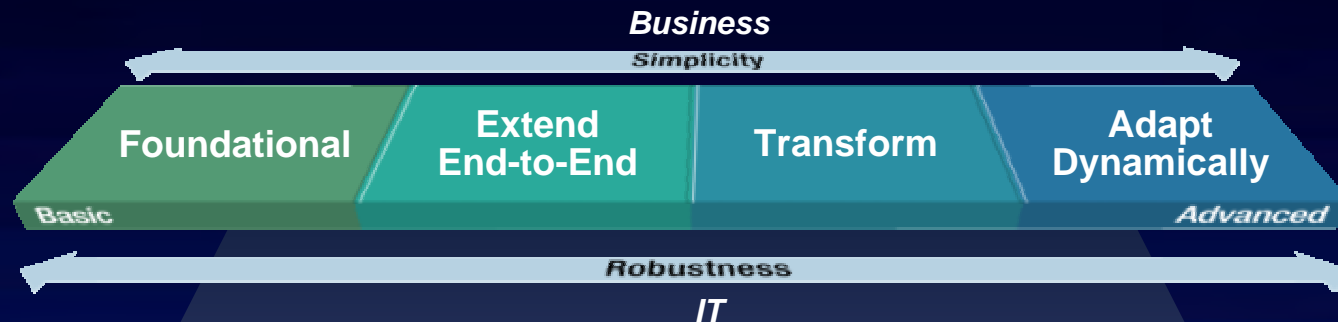
Economic and Compliance Value of SOA Governance

Client experience highlights the need for SOA Governance:

- From day one of SOA implementation
 - To realize full savings and value that come with reuse of assets
- To meet industry compliance needs
 - IBM's SOA Governance framework provides both a process and the enabling tools for tracking and reporting of service usage and security
 - Example: Increased legal requirements in the finance industry and public sector mean that governance and enforcement of service usage is even more important today



What's New



Technical Changes

- New WSRR/RAM product
- Enhanced RAM/CCMDB connectivity
- Improved SOA Policy enablement
- New Rational Team Concert

Cultural Changes

- Enhanced SOA Governance and Mgmt Method V2
- Improved GBS SOA CoE Services
- Updated Automated Test Facility (ATF)

SOA Governance Direction Supports Smart SOA

SOA Governance and Service Lifecycle Management is able to support clients across the Smart SOA continuum



Gain control of current environment

- Focus:
- Inventory and control of current services
- Center of Excellence
- Registry/Repository

Go after key business opportunities

- Focus:
- End-to-end processes and policies
- Culture and Org Change
- Enabling tools

Create cross organization Business IT alignment

- Focus:
- Enhance Business/IT governance
- Expand measurements & metrics

End-to-end Quality Management

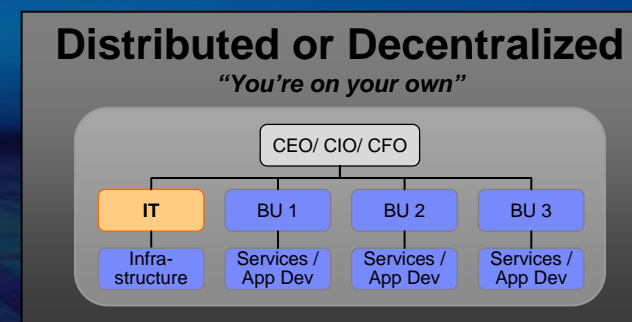
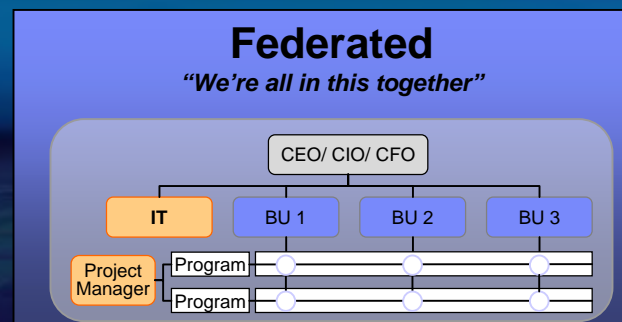
Success Drivers Based on a Federated Approach

Key Success Drivers:

- Assess organizational readiness for federation
 - Skills, Communications, Leadership
- Integrate federation into current SOA implementation plan
 - Understanding, Acceptance, Preparation, Commitment

Governance Approaches

- Centralized – Single solution/product focused
- Federated – Growth based on Smart SOA requirements
- Decentralized – Home grown (ie, spreadsheets)



Federated approach provides the greatest flexibility and growth capability

Support for Each Phase of the SOA Lifecycle

Service and Asset Development

Creating a service that can be reused

Improving communication and collaboration within teams

Adherence to development policies

Developing an SOA Governance approach requires corporate commitment



Service Deployment

Controlling and elimination of “rogue services”

Policy tracking of services for compliance and SLAs

Testing complex service interactions

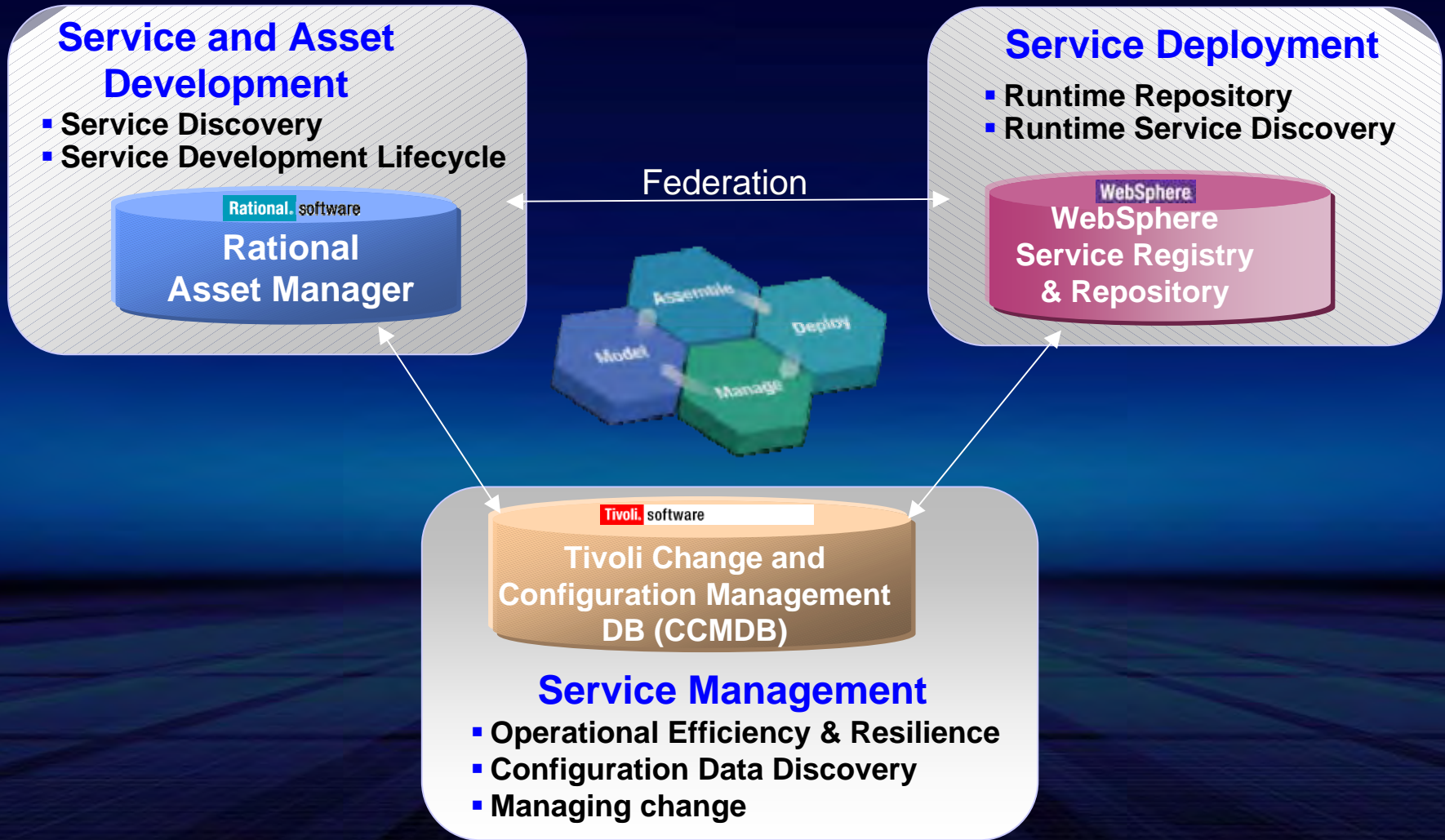
Service Management

Active, automated enforcement of SOA policies

Dynamic reporting of service status and alerts

IBM's Federated Registry/Repository Approach

Key components of a Federated Registry/Repository



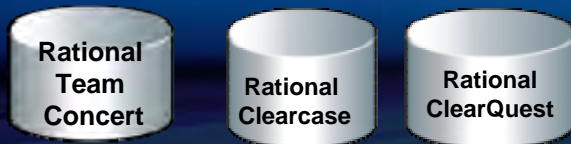
Reuse Requires Quality Development

Service and Asset Development

- Service Discovery
- Service Development Lifecycle



Development Registries



Rational Asset Manager V7.1 update

- Collaboration & Community Improvements
 - Rational Team Concert integration
- Asset Lifecycle and Traceability
 - Graphical Asset Relationships
- Governance
 - Policy management integration
 - Reporting improvements

- Interfaces with Development tools, Rational Clearcase and Clearquest



Rational Team Concert improves ability for collaborative development and deployment

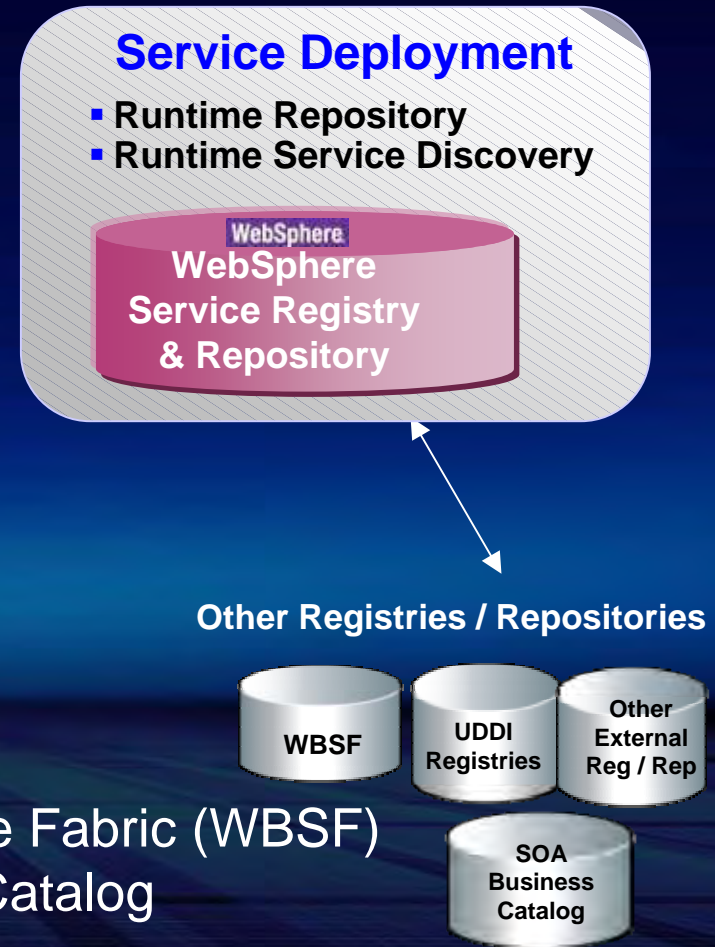
Designed for Tracking and Reporting on Deployed Services

Federated Services, Policies and Metadata

- Publish/Manage Services
 - Dependencies/relationships and discovery
 - User-defined relationships
 - Impact analysis
- Integration with WebSphere DataPower SOA Appliance for runtime enforcement



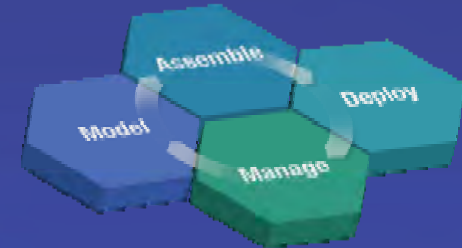
- Interface with WebSphere Business Service Fabric (WBSF)
- Acquire services from IBM SOA Business Catalog
- * New! Improved support for UDDI registries
- * New! Enhanced SOA Policy capability



Govern from Service Creation to Consumption

* New!

- Store and organize assets and services
- Impact assessment of deployed services
- Auditing and reporting on service SLAs



* New!

WSRR Advanced Lifecycle Edition

**Service and Asset
Development**

**Service Deployment
and Runtime**



Available July

- Low cost starter pack
- Single organization for support
- Easy to upgrade

Working Together to Supply Impact Analysis on Services Needing Maintenance

Asset Development

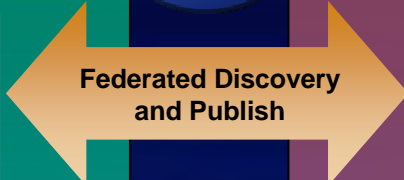
Rational Asset Manager



Manages asset information for development and re-use

Asset

New!



Operations / Management

Tivoli Change and Configuration Management Database



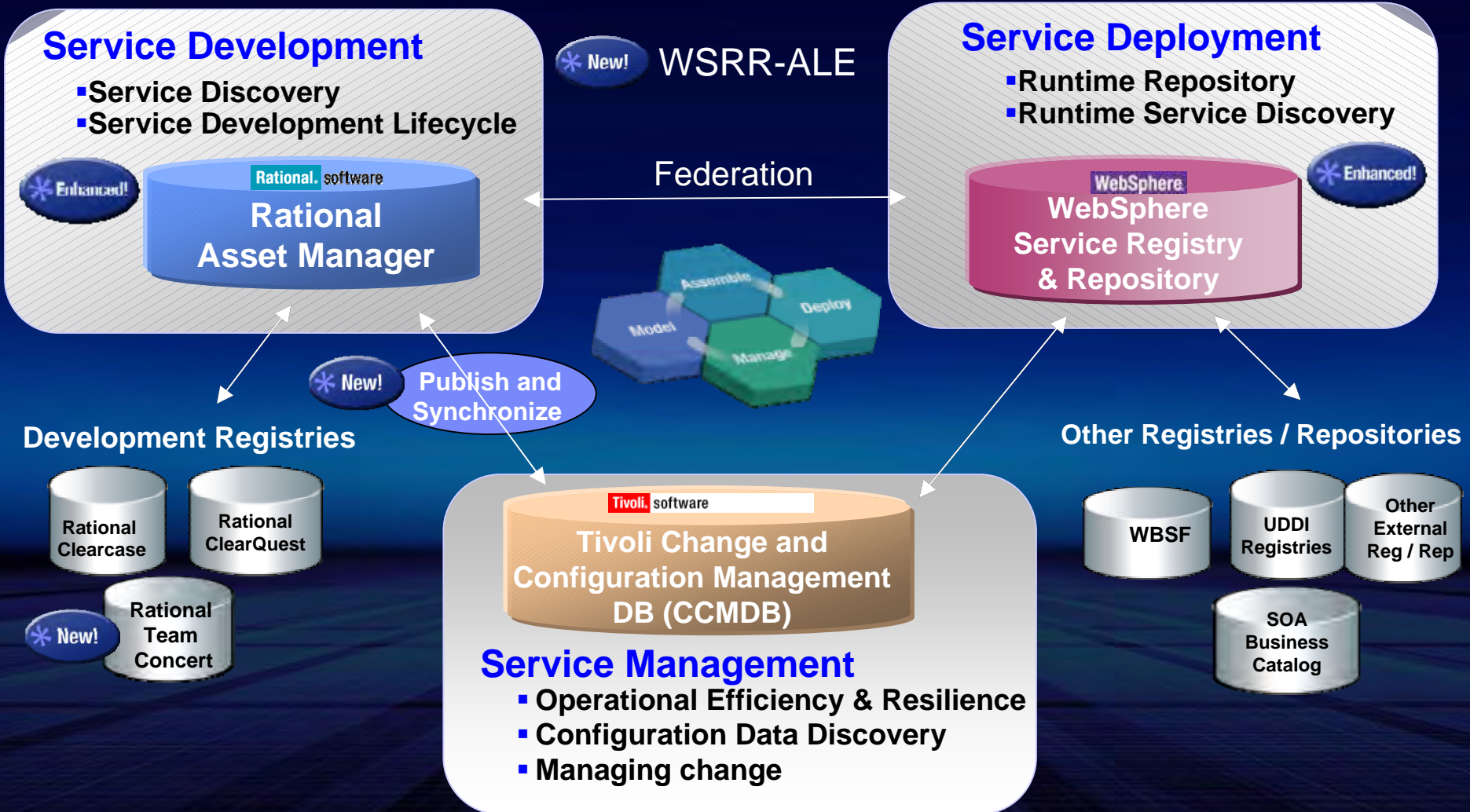
Manages information needed for services execution

Configuration

- View of configuration and asset changes and impacts
- Identify, trace and manage newly released assets from RAM to CCMDB
- Notify development quickly on operational problems for quick resolution with links from CCMDB to RAM

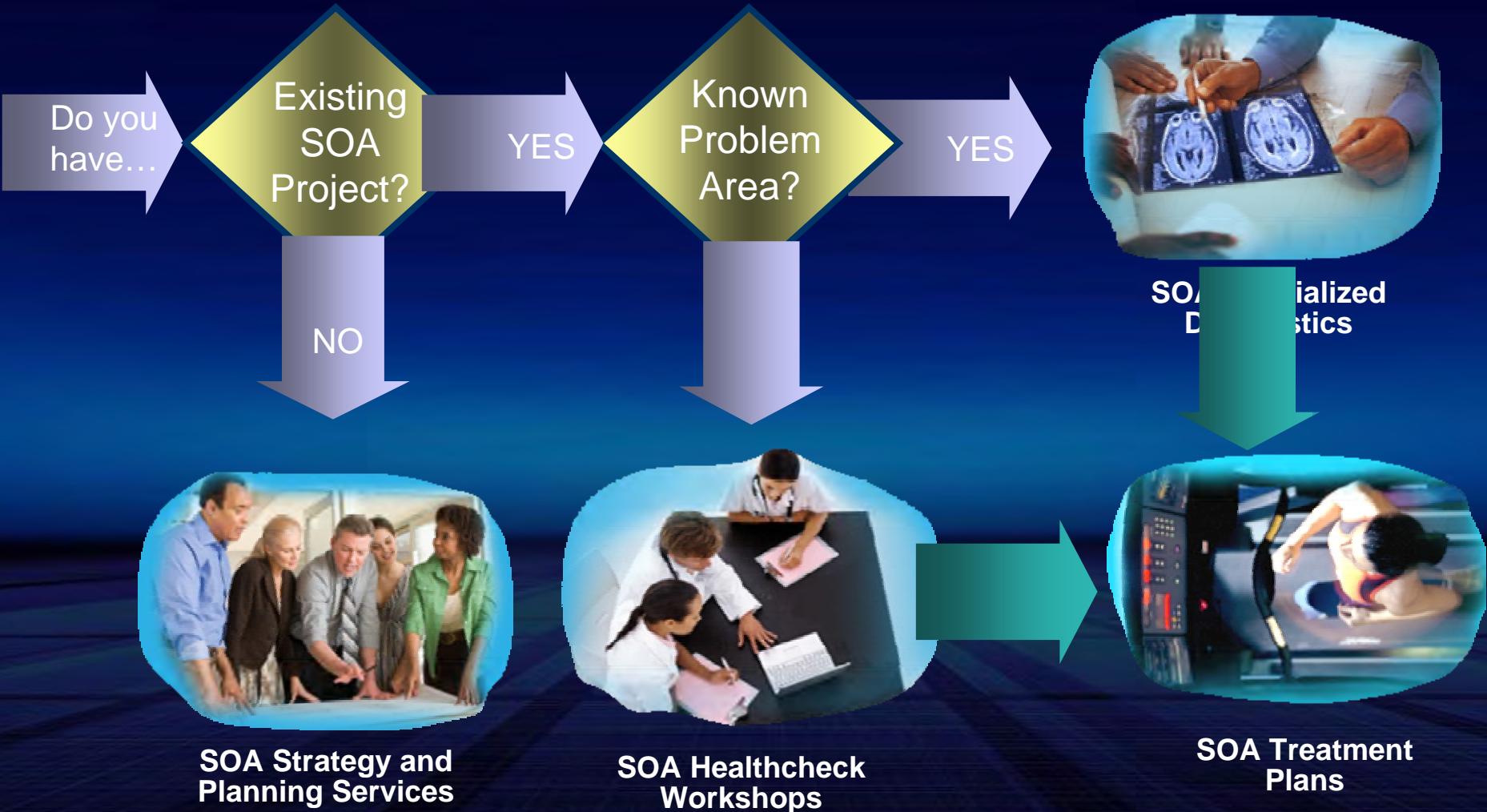
Federated Approach Delivers SOA Value Quicker

Federated Services, Policies and Metadata



So What's the Next Step for Your SOA Health?

Choose the right path for your needs



Is Your SOA Ready to Go the Distance?

- Understand your SOA health:
 - Healthcheck Workshop
- Assess known SOA problem areas:
 - Specialized Diagnostic Healthcheck
- Talk with your IBM representative today!



www.ibm.com/soa/healthcheck

2008 IMPACT

Questions & Answers

© IBM Corporation 2007. All Rights Reserved.

The workshops, sessions and materials have been prepared by IBM or the session speakers and reflect their own views. They are provided for informational purposes only, and are neither intended to, nor shall have the effect of being, legal or other guidance or advice to any participant. While efforts were made to verify the completeness and accuracy of the information contained in this presentation, it is provided AS IS without warranty of any kind, express or implied. IBM shall not be responsible for any damages arising out of the use of, or otherwise related to, this presentation or any other materials. Nothing contained in this presentation is intended to, nor shall have the effect of, creating any warranties or representations from IBM or its suppliers or licensors, or altering the terms and conditions of the applicable license agreement governing the use of IBM software.

References in this presentation to IBM products, programs, or services do not imply that they will be available in all countries in which IBM operates. Product release dates and/or capabilities referenced in this presentation may change at any time at IBM's sole discretion based on market opportunities or other factors, and are not intended to be a commitment to future product or feature availability in any way. Nothing contained in these materials is intended to, nor shall have the effect of, stating or implying that any activities undertaken by you will result in any specific sales, revenue growth or other results.

Performance is based on measurements and projections using standard IBM benchmarks in a controlled environment. The actual throughput or performance that any user will experience will vary depending upon many factors, including considerations such as the amount of

multiprogramming in the user's job stream, the I/O configuration, the storage configuration, and the workload processed. Therefore, no assurance can be given that an individual user will achieve results similar to those stated here.

All customer examples described are presented as illustrations of how those customers have used IBM products and the results they may have achieved. Actual environmental costs and performance characteristics may vary by customer.

The following are trademarks of the International Business Machines Corporation in the United States and/or other countries. For a complete list of IBM trademarks, see www.ibm.com/legal/copytrade.shtml

AIX, CICS, CICSplex, DB2, DB2 Universal Database, i5/OS, IBM, the IBM logo, IMS, iSeries, Lotus, OMEGAMON, OS/390, Parallel Sysplex, pureXML, Rational, RCAF, Redbooks, Sametime, System i, System i5, System z , Tivoli, WebSphere, and z/OS.

Java and all Java-based trademarks are trademarks of Sun Microsystems, Inc. in the United States, other countries, or both.

Microsoft and Windows are trademarks of Microsoft Corporation in the United States, other countries, or both.

Intel and Pentium are trademarks or registered trademarks of Intel Corporation or its subsidiaries in the United States and other countries.

UNIX is a registered trademark of The Open Group in the United States and other countries.

Linux is a registered trademark of Linus Torvalds in the United States, other countries, or both.

Other company, product, or service names may be trademarks or service marks of others.