



# MAXIMO asset management

*Smart Industry view*

IBM Software

# PCTY2010

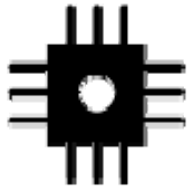


Pulse Comes to You

**Optimizing the World's Infrastructure**  
**[June 10. Madrid]**

# Consider how our world is changing:

## Our world is becoming more...



### INSTRUMENTED

- **By 2010, 30 billion** embedded RFID tags in our daily life, communicating across the entire ecosystem
- **1/2 of all sensors** in transportation, facilities & production equipment are smart sensors (e.g. robots, kiosks, meters, PDAs, appliances, cameras, smart phones, biometric devices, turnstiles or the Web).
- By 2010, **12% of new cars** will ship with embedded telematics.



### INTERCONNECTED

- **1/3 of the world's population** is utilizing the Web by 2011
- **4B mobile subscribers** globally at the end of 2008
- The **interconnection of people and things**—customers, drivers, employees, roads, aircraft, airports, cargo, suppliers—creates the ability to improve performance and **quicker decision making**



### INTELLIGENT

- **15 petabytes of new information** generated every day.. (8x more than the information in all U.S. libraries)
- An average company of 1,000 employees spends \$5.3 million a year to **find information** stored on its servers.
- Sophisticated **analytic systems** enable patterns to be recognized, relationships to be drawn and **continuous decision making** and in near **real time to drive smarter**

# The world is getting smarter



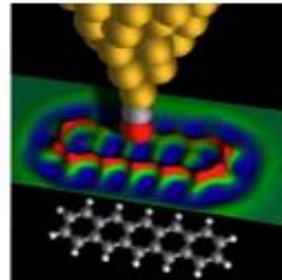
Smart traffic systems



Smart oil & gas technologies



Smart food systems



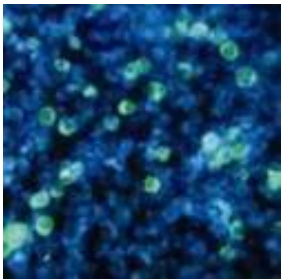
Smart healthcare



Smart energy management



Smart retail



Smart water management



Smart supply chains



Smart manufacturing



Smart buildings



Smart cities



Smart regions

# The transformation to a “smart” approach

## Traditional approach

## Smarter approach



It enables you to become more efficient, productive and responsive.

# Smart Asset Management



We've thought about IT as the world of data centers, software, PCs, routers, bandwidth.

We've thought about infrastructure as the world of buildings, factories, hospitals, roads, pipeline.

These worlds are converging.

In a smaller, flatter, faster and “smarter” planet we face...

More ***complexity in assets and processes***

More ***capabilities required***

More ***reliance on management systems***

But, we also have the opportunity to achieve...

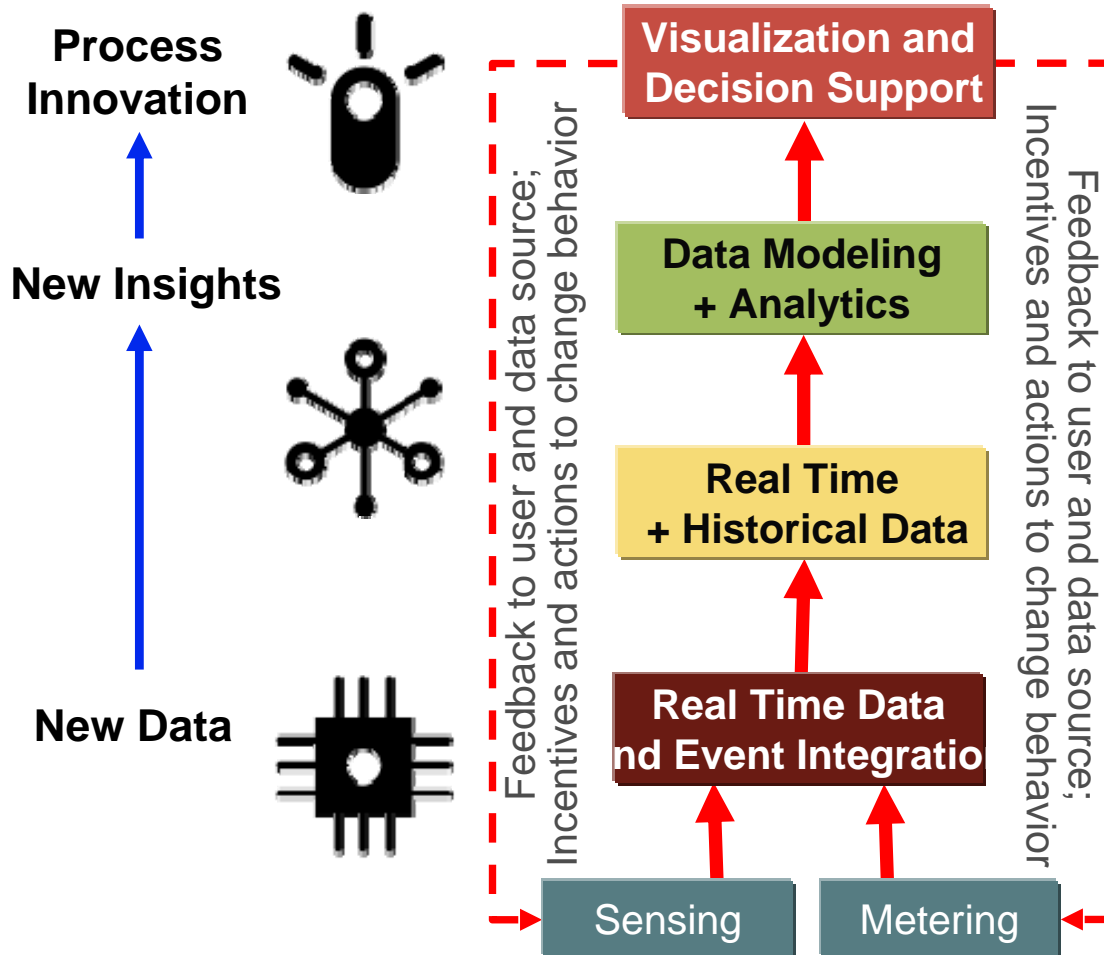
More ***insight and collaboration***

More ***efficiency, growth and profit***

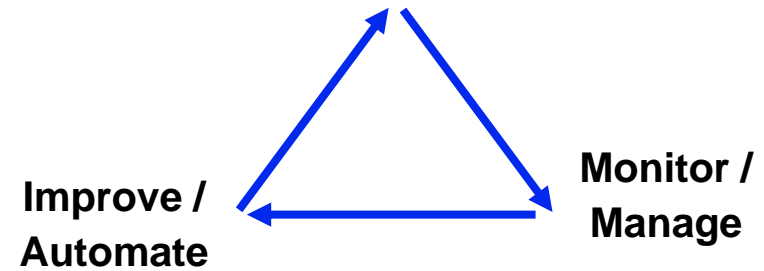
More ***innovation***

# What does SMART mean .....

Deploy available and Improved intelligence



Measure / Discover

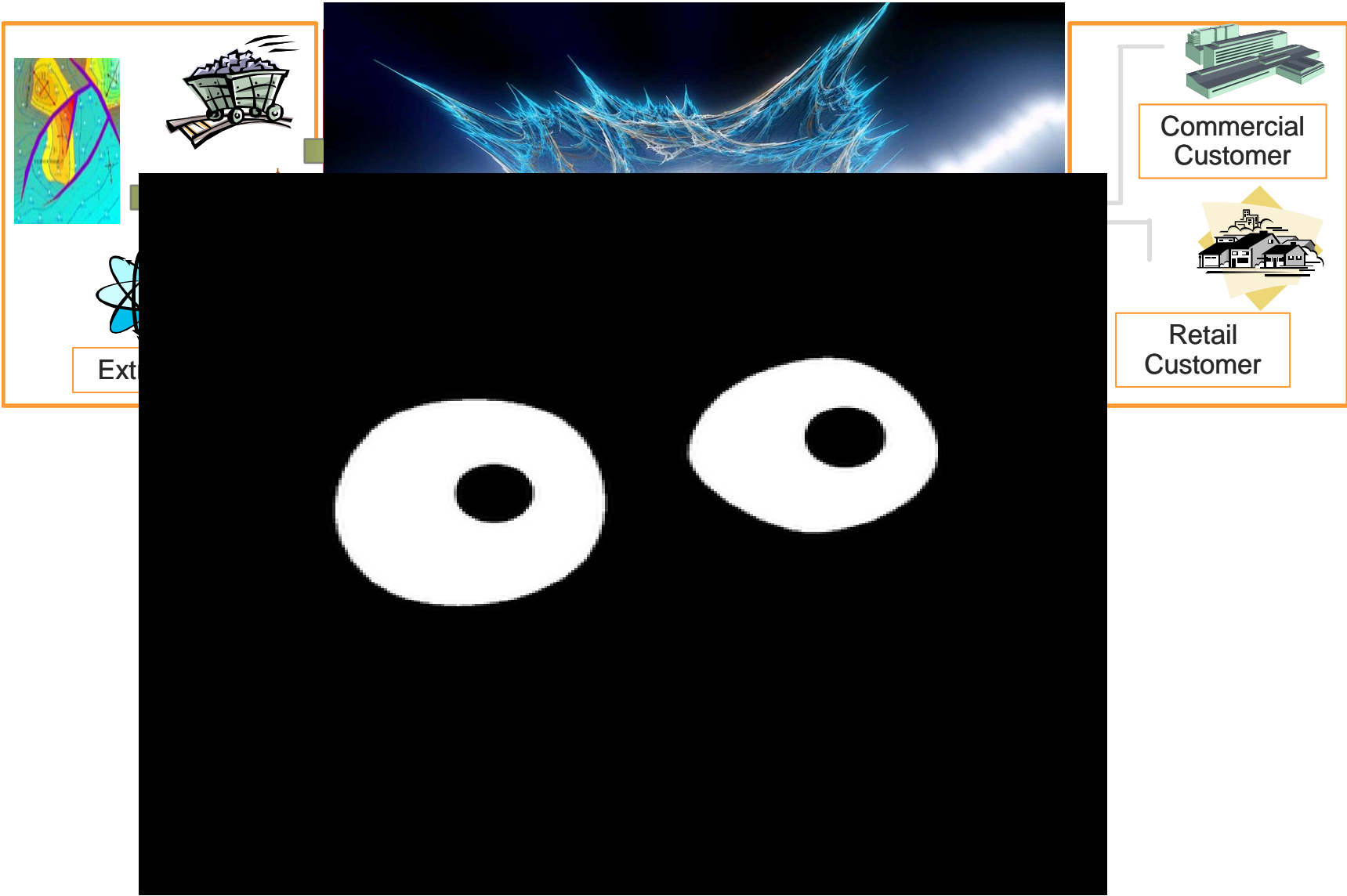


- **Data modeling and analytics to create insights from data to feed decision support and actions**
  - Build a scorecard
- **Proactively develop responses**
  - What is likely to happen in the future ?
  - What action will drive the best outcome ?
- **Comparison of historical data, with newly collected data**



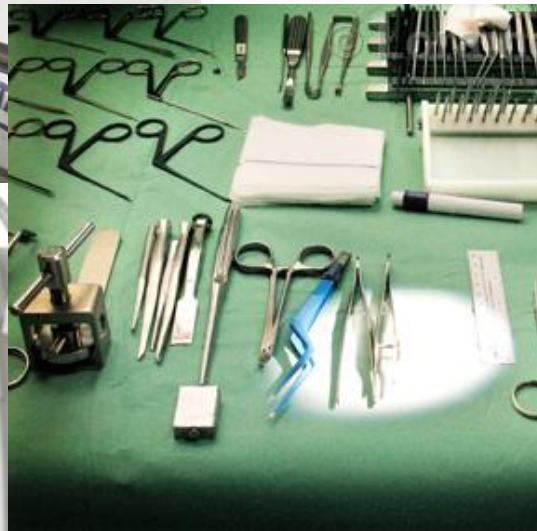
# What is Asset Management (AM)

UTILITIES



# What is Asset Management (AM)

HEALTH CARE





# What is Asset Management (AM)

## Visibility

See  
your  
assets



## Control

Govern  
your  
assets



## Automation

Build agility  
into  
Operations

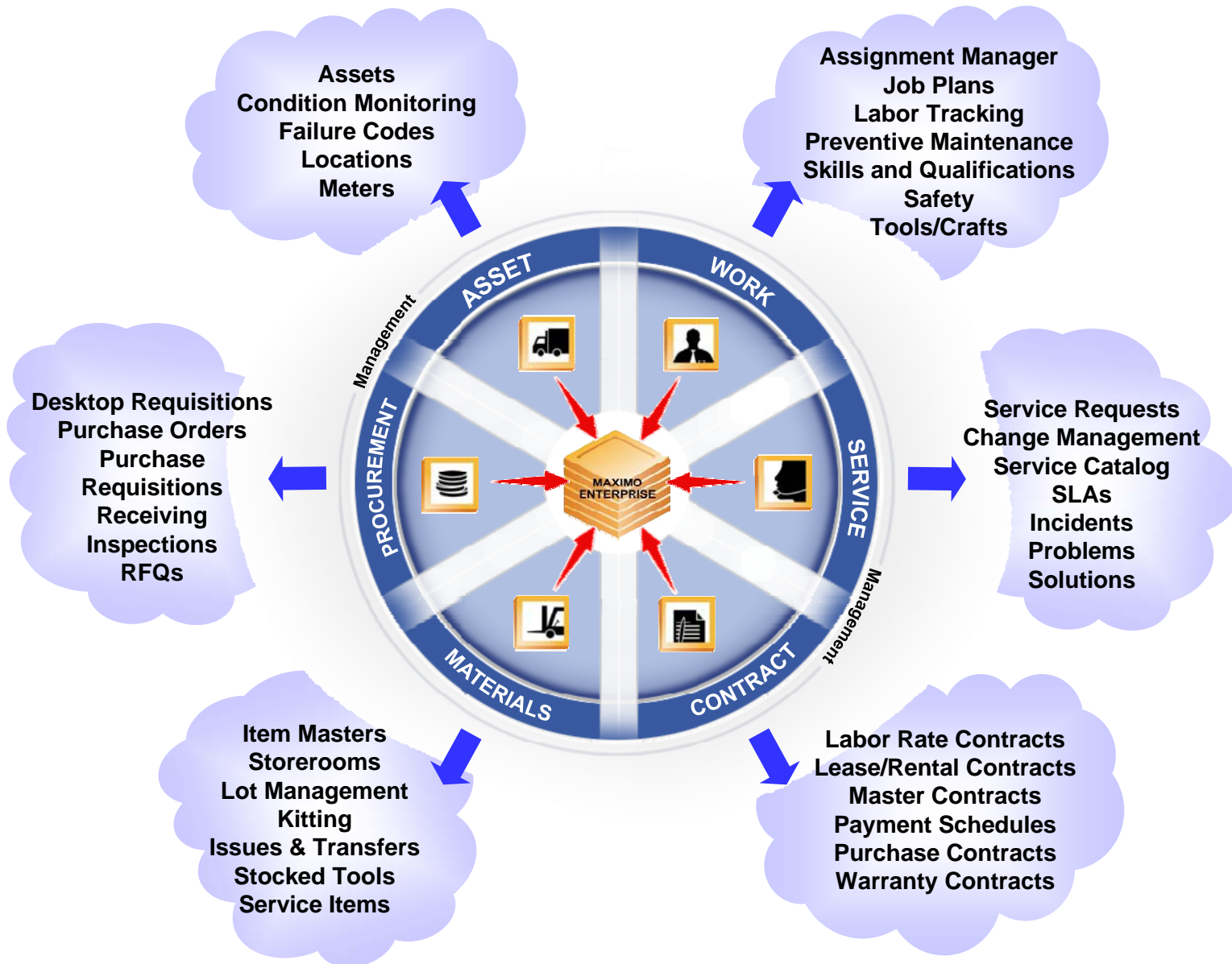


- ▶ What do I have?
- ▶ Who is using it?
- ▶ How is it used?
- ▶ What does it cost?
- ▶ Where is it?
- ▶ How is it connected?

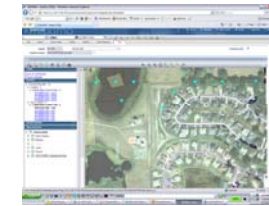
- ▶ **S**afe
- ▶ **M**aintainable
- ▶ **A**vailable
- ▶ **R**eliable
- ▶ **T**raceable

***AM brings value  
to your Business***

# Maximo – End-to-end Asset Lifecycle Management



## Spatially Enabled



## Mobile



## BPA



## Scalable J2EE Architecture

- Configure, not Customize
- Open Integration Interfaces
- SAP and Oracle Integration
- Role-based User Interfaces

# Smart Asset Management

## SMART IS: IT Asset Management

Track and manage the lifecycle of IT assets



- Manage security policy compliance
- Track hardware and software deployment
- Manage audit, license, lease and software compliance exposures
- Combine inventory, maintenance, contacting processes

## SMART IS: Converged Assets

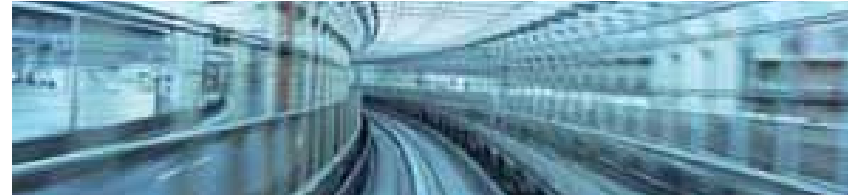
Leverage operational assets with embedded IT



- Physical devices are becoming IP enabled - smart meter.
- Embedded IT improves asset performance
- Enable remote monitoring and automation.

## SMART IS: Consolidated Asset Management

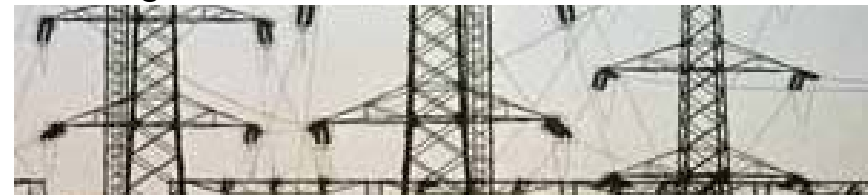
Manage the lifecycle of all critical assets



- Address all types of assets: Production, Delivery, Transportation, Facilities, Infrastructure and IT
- Enforce best practices across the enterprise
- Ensure safe and reliable operations

## SMART IS: Deep Industry Functionality

Meeting the needs of asset intensive industries



- Industry specific solutions for Nuclear Power, Utilities, Transportation, Life Sciences, and Oil & Gas,
- Supporting infrastructure with Spatial and Linear Asset Management



# SMART Utilities

- Smart GRID
- Smart Metering

IBM Software

# PCTY2010



Pulse Comes to You

# Smart Asset Management in Utilities

**SMART is:** providing real-time information about the flow of energy; as an intelligent utility system helps citizens and utilities make smarter, more responsible choices about buying, selling and managing utility services.



**Southern Power** use Maximo Asset Management to help staff proactively manage and maintain all infrastructure assets. This will help to reduce costs, provide staff with greater insight into operations and efficiently maintain an audit trail for compliance activities.



**San Francisco Public Utilities Commission** implemented an Asset Management solution to properly manage and maintain the city's wastewater system. Combining IBM Maximo software with IBM Cognos® 8 Business Intelligence and ESRI's ArcGIS provides better visibility to the physical infrastructure and maintenance operations has led to an 11% approximate improvement of preventive to corrective maintenance

**SMART is:**  
Ability to predict problems helps prevent outages



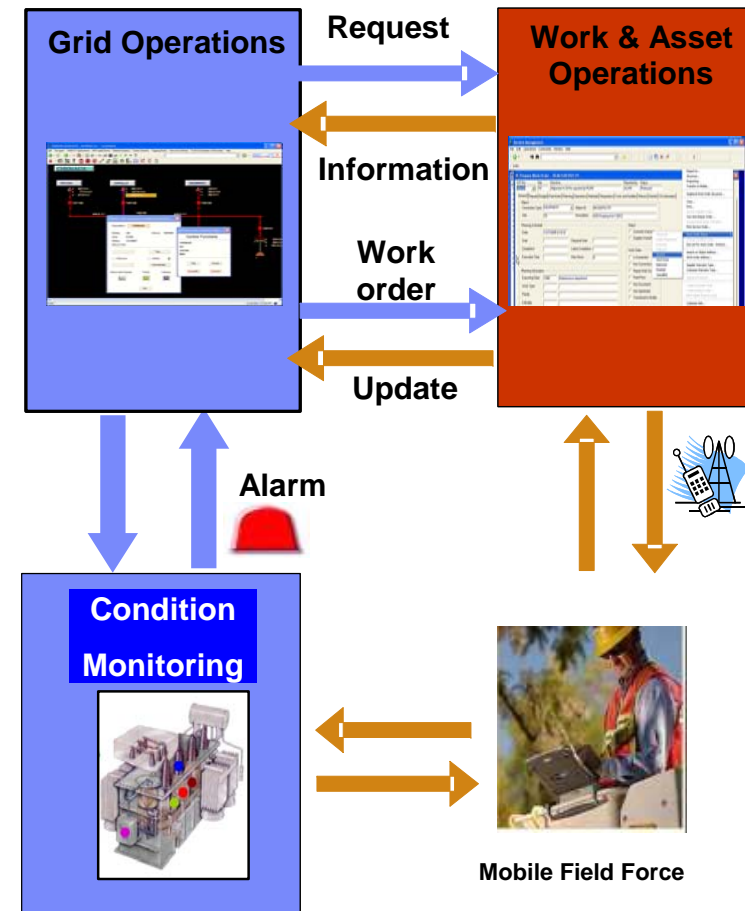
**Electricite Reseau Distribution France**  
ERDF has implemented a condition-based asset management and maintenance system to be ready for the future: visibility and control of key information and to get: Greater insight into operations take preventive action to avoid asset breakdowns and outages; comprehensive cost analysis to optimize resource allocation, improved knowledge



# How AM data can be used to improve Grid Operations

**Use Case One : A transformer oil temperature alarm is raised at EMS level  
Operator has to decide whether the transformer needs to be put out of service or not**

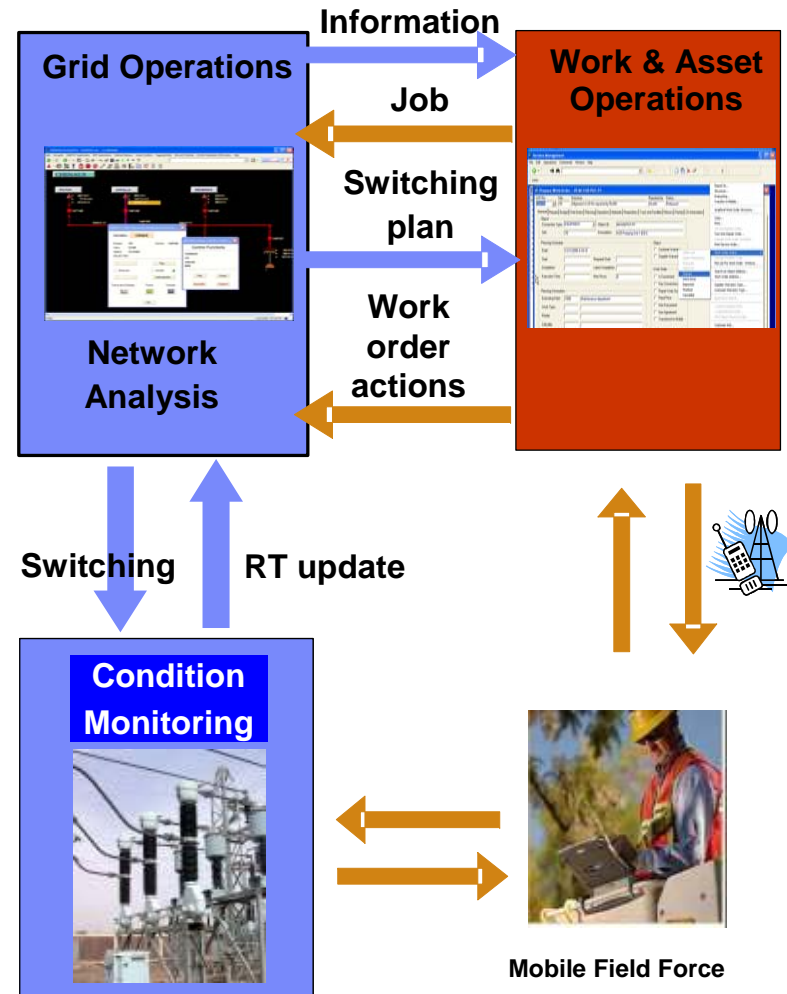
- **Benefits :**
  - Optimized reaction to abnormal conditions
  - Consistent and up-to-date maintenance information across grid operation and EAM
- **Sequence :**
  - Transformer selected in EMS UI
  - Past work orders and equipment Asset data retrieved from EAM
  - EMS operator reviews history,
  - Predictive analysis on the Transformer makes recommendations
  - Operator may trigger a maintenance Job into EAM
  - EAM writes a Tag to the EMS to show « on-going maintenance »



# How grid operations data can be used by the EAM system

## Use Case Three : Improve reliability while performing asset maintenance Example : Circuit Breaker maintenance

- **Benefits :**
  - Improved reliability
  - Safety rules and procedures tracking
  - Consistent and up-to-date maintenance information across Grid Operations and EAM
- **Sequence :**
  - Maintenance Job is triggered by real time status data coming from EMS
  - EAM requests EMS to compute a switching plan
  - Suite of switching tasks is captured in an EAM Job Safety plan
  - Additional Field and Safety actions are added by EAM
  - Safety documents are initiated
  - Workflows are activated for the various approvals before execution
  - Job is executed: EMS related actions are automatically carried out from the EAM
  - Job is archived





# SMART Utilities

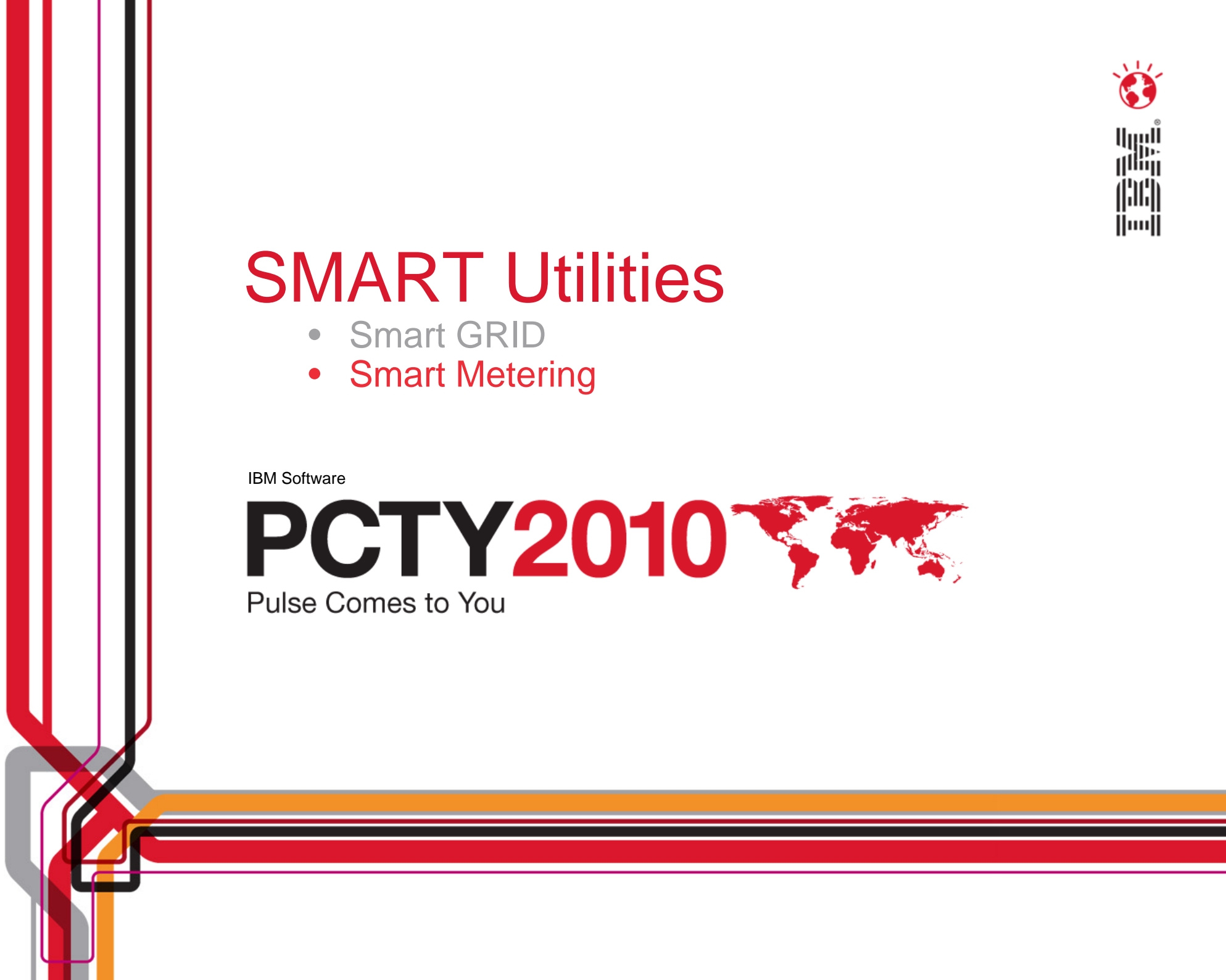
- Smart GRID
- Smart Metering

IBM Software

# PCTY2010



Pulse Comes to You

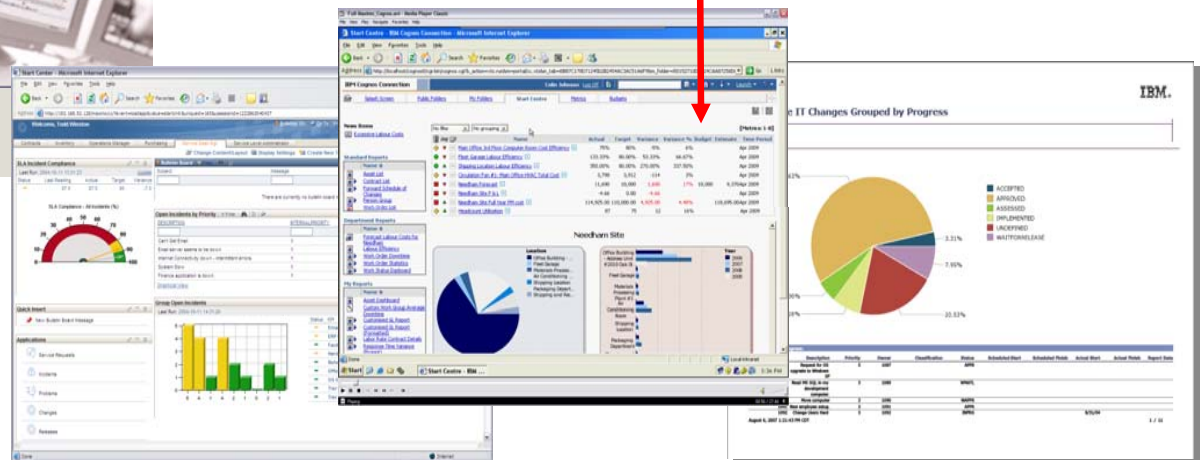


# Maximo complementary to Smart Metering software



- Use Smart metering master data as:
- Asset and location operational data
  - Analysis data

Data collection - Sophisticated and diverse data collection systems





# Maximo complementary to Smart Metering software



## How does it work

**Control** – The system enables full control of the network from anywhere anytime

Use real time warnings as:

- Data for service process
- Start for automated service process
  - enable work force
  - enable vendor or service provider
  - allocate materials and tools





# SMART Health Care

IBM Software

**PCTY2010**   
Pulse Comes to You



# Smart Asset Management in Healthcare

## On a smarter planet, imagine if . . .



EMT teams could **collaborate** with hospital physicians in real-time, using secure, integrated patient information?



Clinicians could **educate and inform patients** in their hospital rooms using integrated information on a single physical display?



A **single view** could instantly tell you the location of every critical patient care asset in the hospital – in real-time?



**Integrated patient information** were available to physicians consulting on a diagnosis, independent of time or location?



A **single dashboard** could provide visibility to everything that generates energy in your facility?

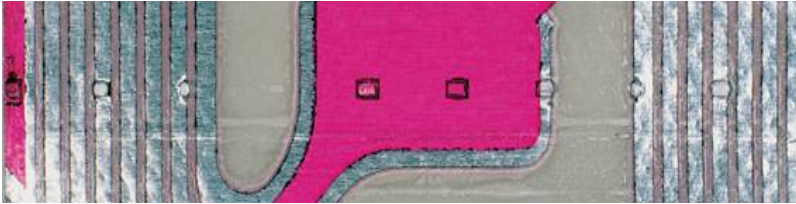
You could know which beds or other equipment in your hospital **are truly available** for admitting patients – NOW?

You know (in real-time) where all **critical and necessary asset, tools, equipment (and people)** are located ?

# Smart Asset Management in Healthcare:

## SMART IS

Helping doctors to locate and prioritize patients for care by automatically tracking and recording the position of patients, medical devices and assets.



## SMART IS

Gaining real-time line of sight and responses to individualized health information.



## SMART IS

Simplifying future growth and integration efforts with a standardized architecture.



## SMART IS

Protecting your patients and staff through immediate connection and visibility to their location.



## SMART IS

Smart is expanding user access to information and reducing operating and maintenance costs at the same time.



## SMART IS

Treating the patient before the patient arrives at the hospital.



# Issues

## *Real-time asset visibility impacts productivity and cost control*

### **Excess Expense & Capital Expenditure**

---

- Do I over-procure mobile assets?
- How much safety stock do I maintain?
- Am I paying excessive amounts for rental equipment?

### **Asset loss**

---

- How much equipment do I lose annually?
- Can losses be reduced?

### **Operational Efficiency**

---

- Are my staff spending valuable time searching for equipment to do their job?
- Is product impacted by asset misallocation?
- Are audit, validation and compliance procedures easy to carry out?



### **Asset Utilization**

---

- Do I know my asset utilization rate?
- How do I set reasonable targets for utilization?

# Benefits of Location & Condition enabled Asset Mngt

*Real-time asset visibility impacts productivity and cost control*

## Excess Expense & Capital Expenditure

---

- Eliminate “Asset Not Found”
- Reduce inventory levels
- Decrease rental equipment costs

## Asset loss

---

- Inside of loss and theft of mobile assets
- Decrease by 10% of misplaced or lost equipment annually

## Operational Efficiency

---

- Less wasted time because of manually tasks
- Critical staff will reduce the time spend (10-30%) of searching for assets.



## Asset Utilization

---

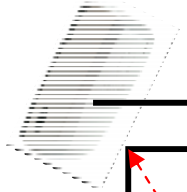
- Supports compliance with PM and calibration
- Shift to Predictive model with real-time capabilities



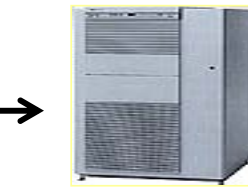
# Real Time Location Services for Asset Management

*Sensor-tagged assets send location information* → *RTLS processes location events & interfaces to Maximo Asset Management* → *Enabling new business use cases and workflows*

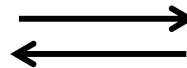
**Reader**  
Placed in the area that needs to be monitored



**x,y,z location information**



**Real-time Location Services**

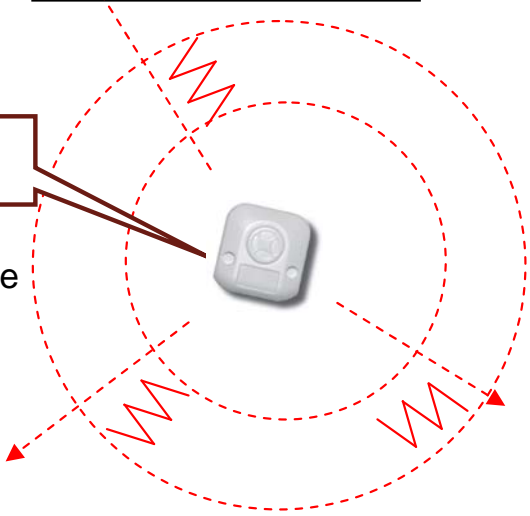


**Maximo Asset Management**

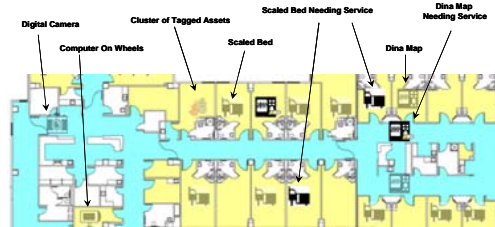
- Location monitoring
- History management
- Zone management
- Complex event processing – alerts
- Web UI

- Improved Workflows**
- Location & condition enabled asset management
  - EAM integration for PM, repair, inventory mgmt.
  - Location and related business events trigger workflow
  - Real-time location visualization
  - Analytics provide KPIs and visibility related to inventory, utilization and exceptions

**Tag**  
Placed on/in the asset



**Web-based UI**





# SMART Buildings

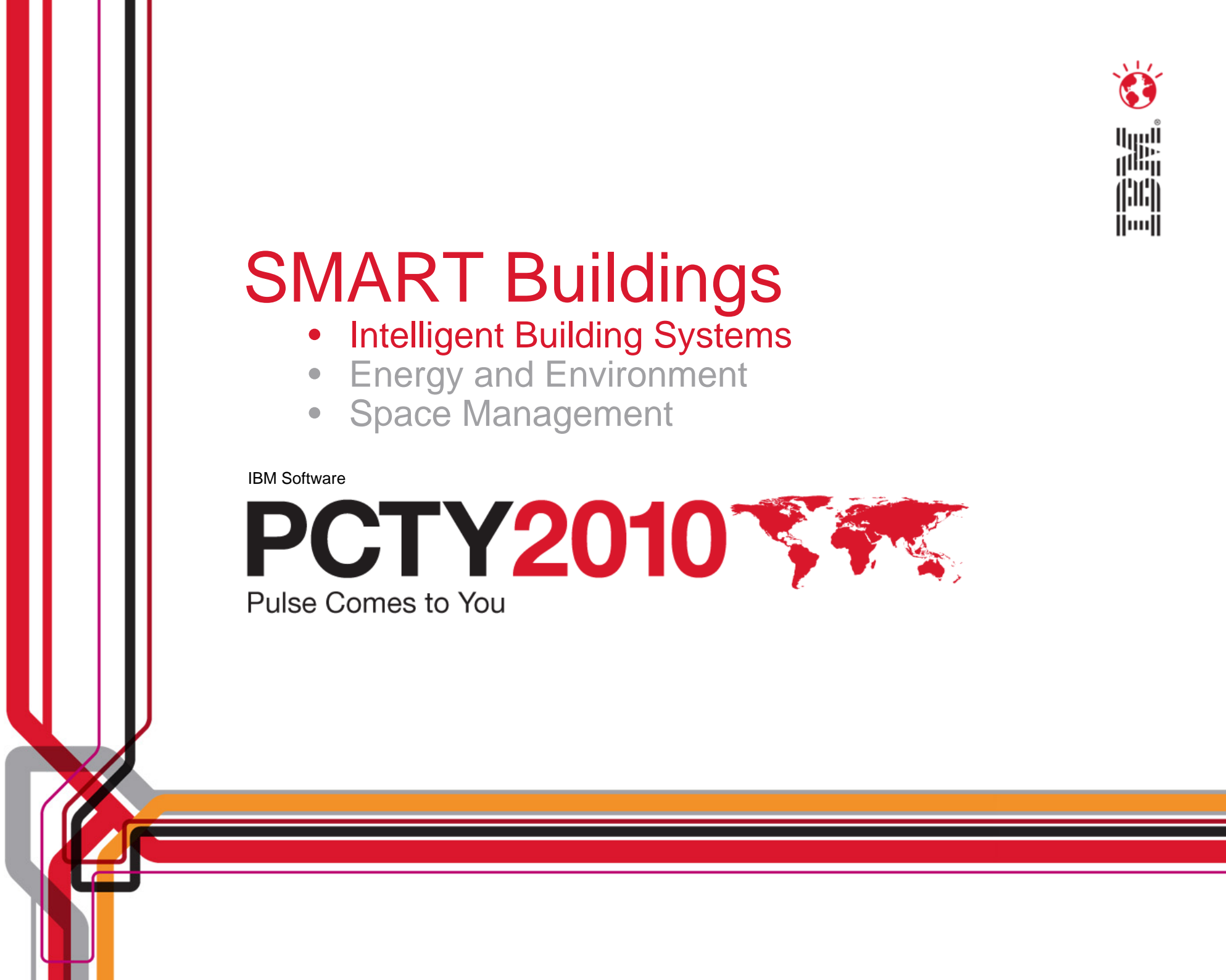
- Intelligent Building Systems
- Energy and Environment
- Space Management

IBM Software

# PCTY2010



Pulse Comes to You



# Smart Buildings

## SMART IS

Create facilities that are cost effective for their owners, reducing energy and operational cost.



### Mabuchi-motors:

Designed, built and maintain an intelligent HQ building in Japan that delivered 22% reduction of CO<sub>2</sub>, 13% reduction of life cycle cost.

## SMART IS

Running Buildings operationally efficient, comfortable and productive for its occupants



### State of MO:

Saving \$35.6M annually from real estate, operations, utilities, and operations creating a ROI of less than one year. Eliminated 205 million pounds of CO<sub>2</sub> equivalent emissions which is equal to that of 40 coal-fired power plants.

## SMART IS

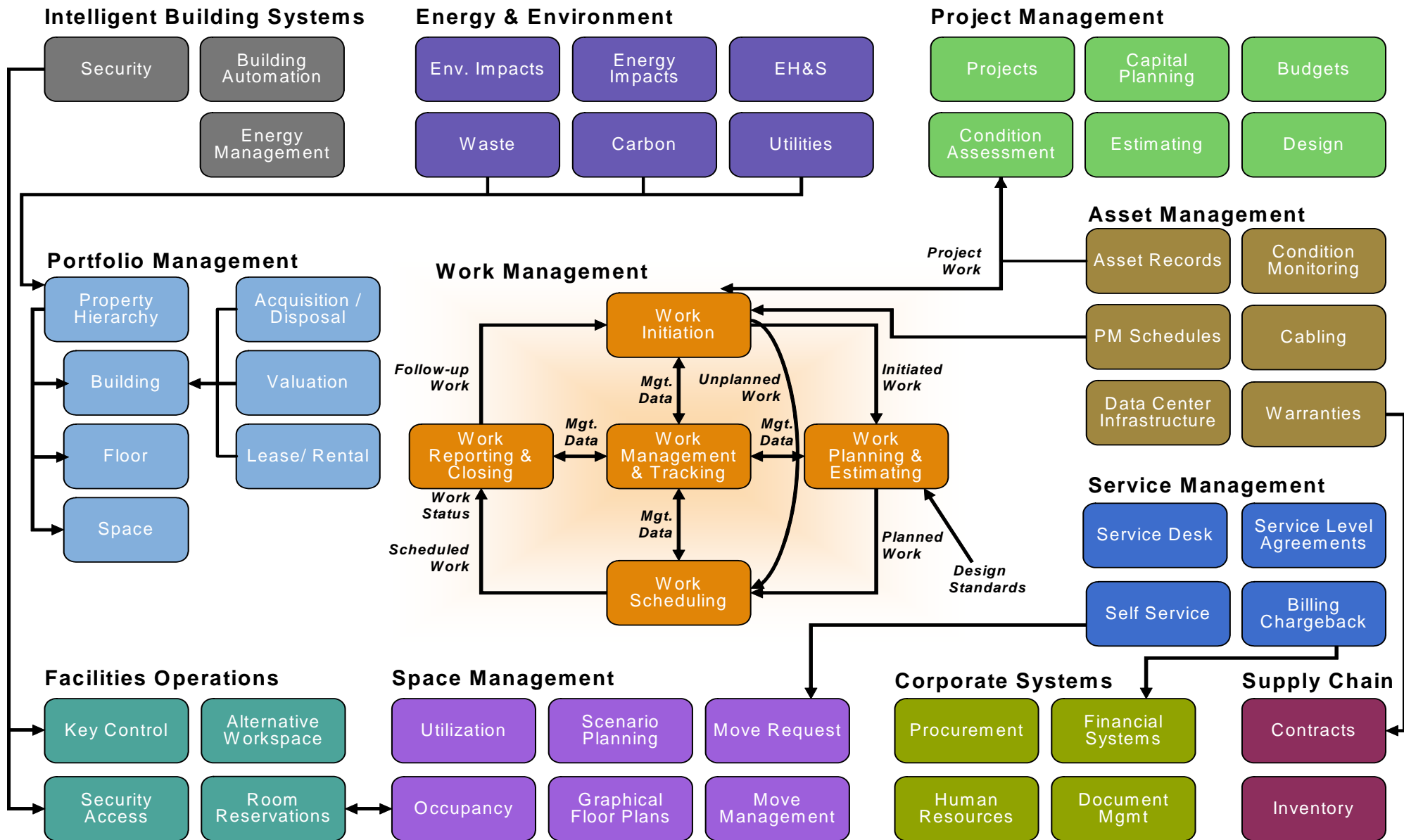
Integration of Energy information related to Asset Management: meaning safer, more secure and focused on safeguarding the environment.



### Ave Maria University:

Converged 23 systems to single IP network. Integrated JCI Metasys with IBM Maximo Asset Management. Saved \$1M in building costs and \$350K/yr in combined operating costs

# Maximo Facilities Management Solution Map



# Building Technologies - Areas of activity

**Security**



**Fire Safety**



**Building Automation**



**Energy Efficiency**



**Low Voltage Distribution**

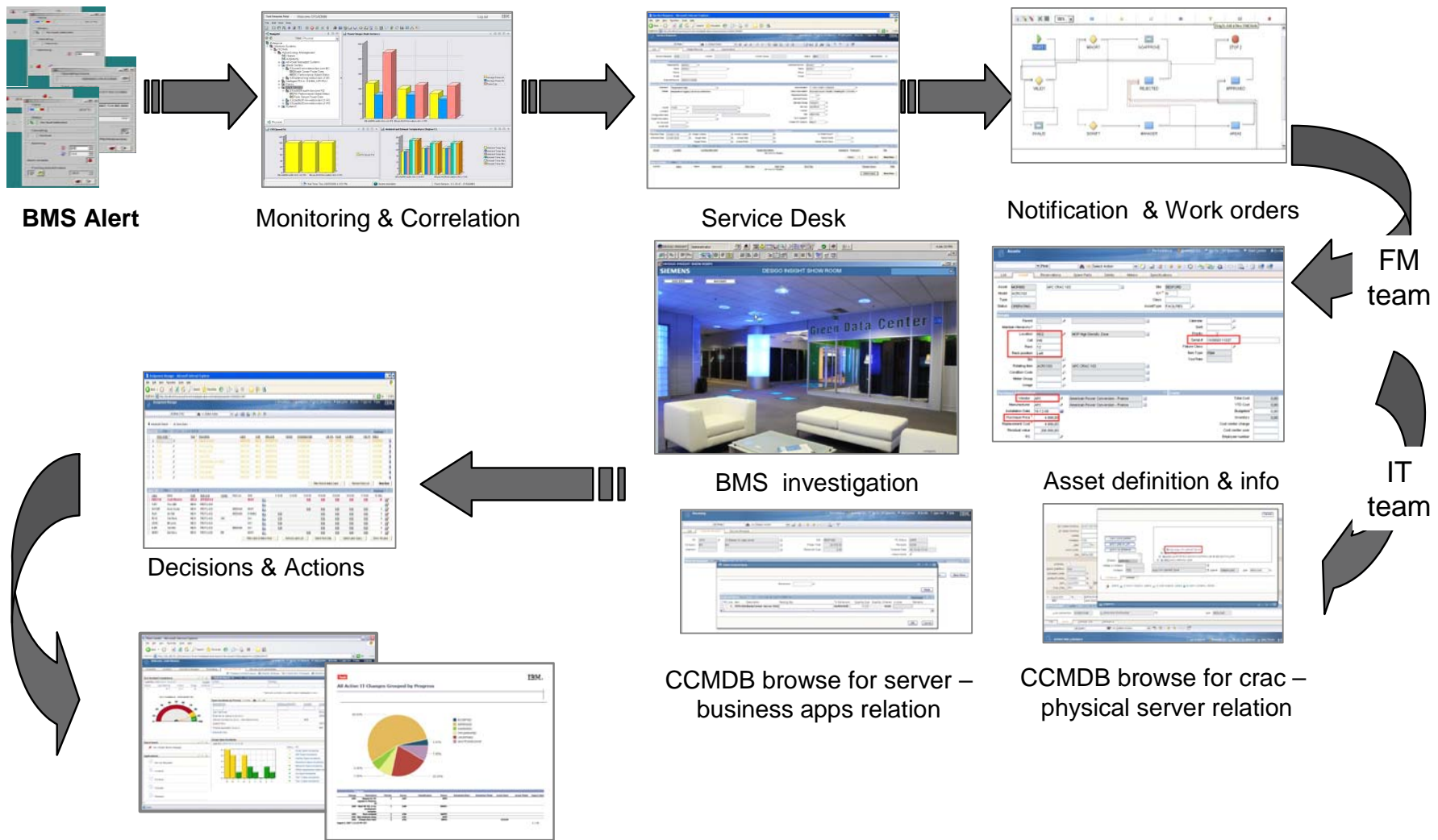


**Total Building Solutions**



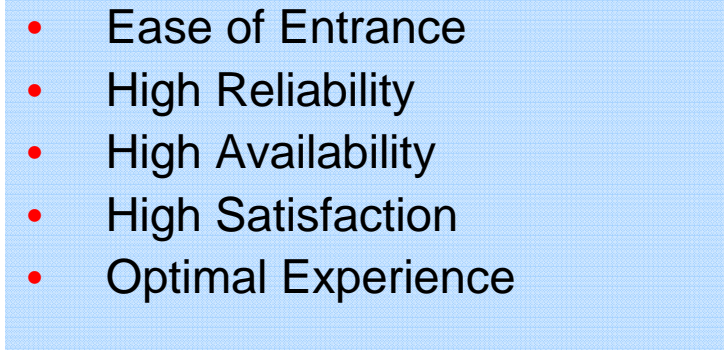
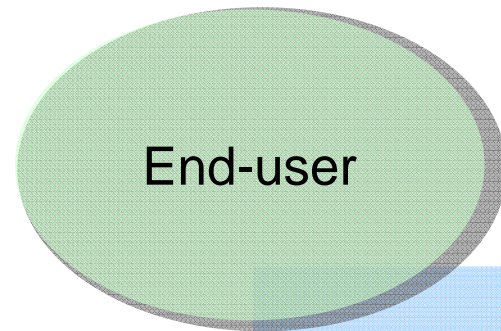
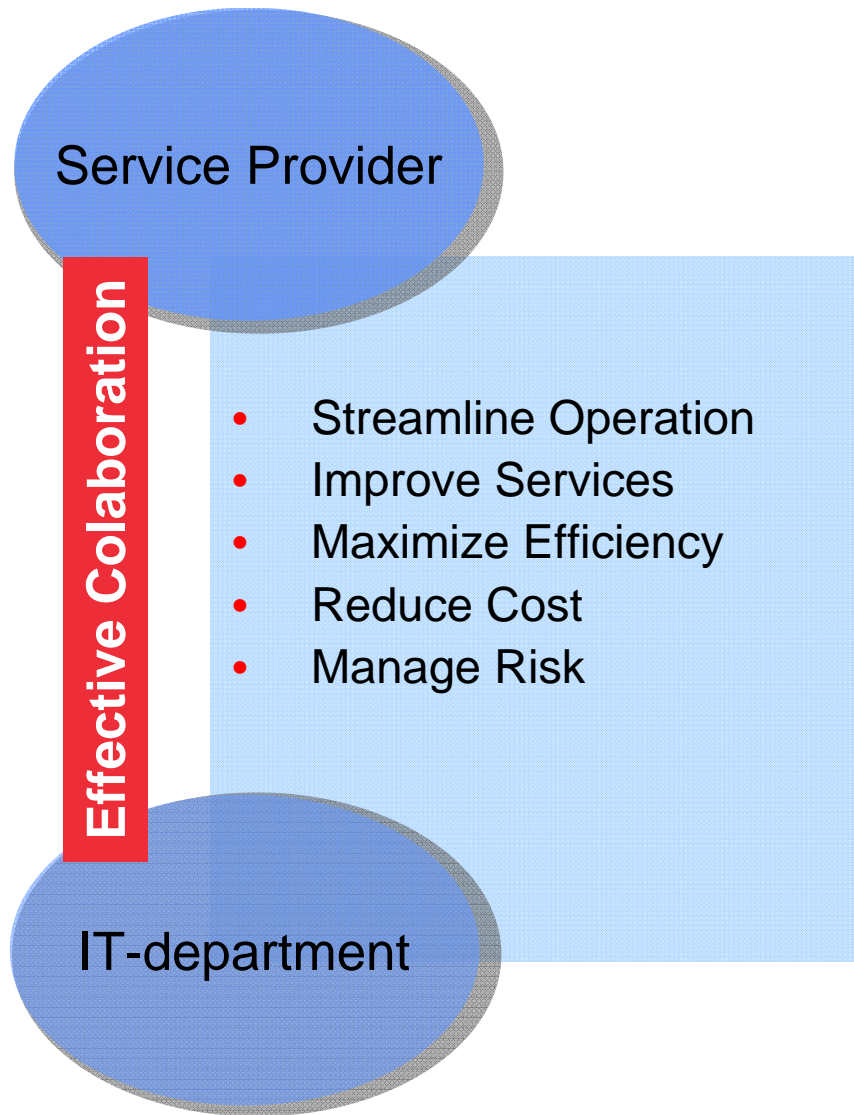


# Service & Asset Mgt - Outage scenario



Dash Boards and reporting with all kind of specific ratio's

# User benefits





# SMART Buildings

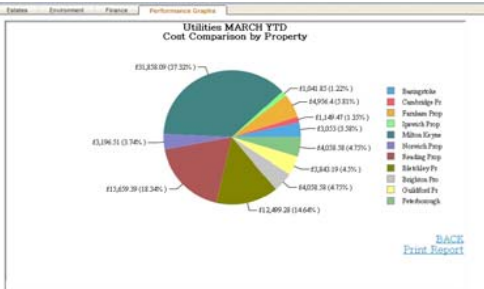
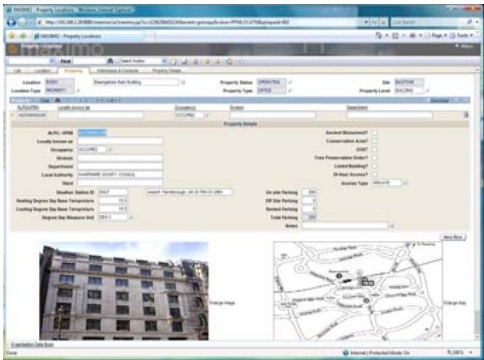
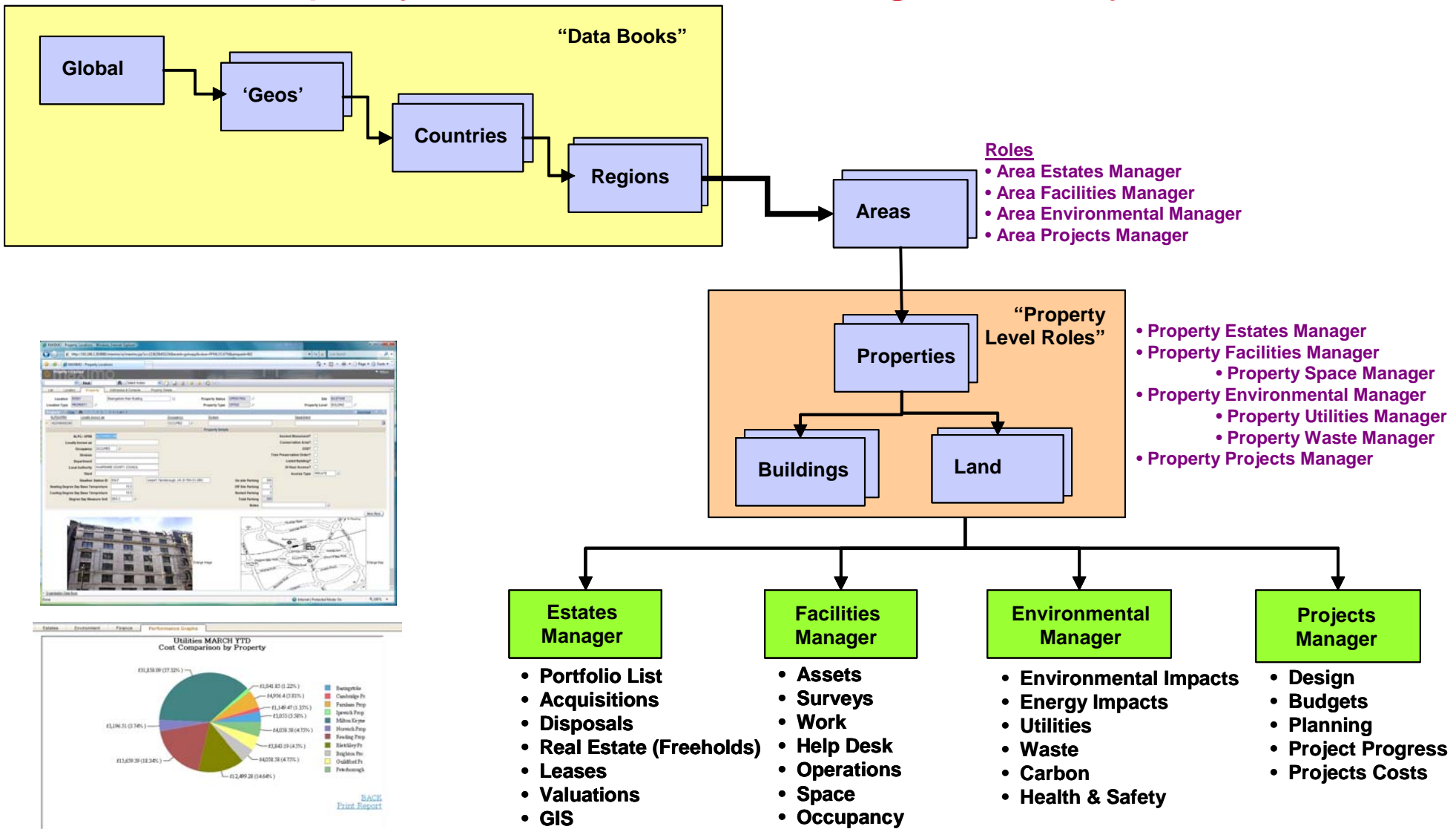
- Intelligent Building Systems
- Energy and Environment
- Space Management

IBM Software

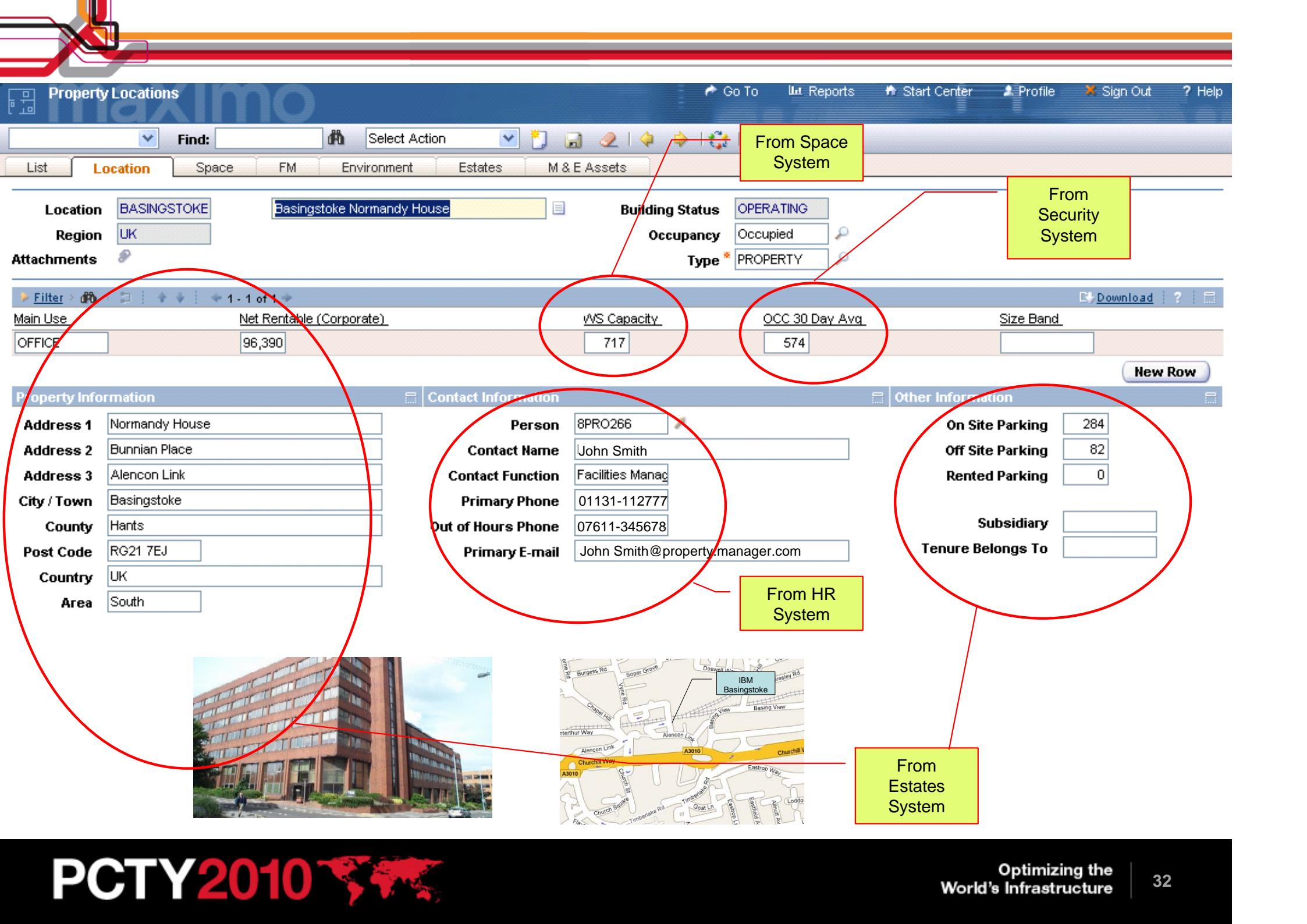
# PCTY2010

Pulse Comes to You

# Maximo Property Performance Management System







Find:  Select Action

List **Location** Space FM Environment Estates M & E Assets

From Space System

From Security System

Location: BASINGSTOKE Basingstoke Normandy House  
 Region: UK  
 Building Status: OPERATING  
 Occupancy: Occupied  
 Type: PROPERTY

Main Use	Net Rentable (Corporate)	WS Capacity	OCC 30 Day Avg	Size Band
OFFICE	96,390	717	574	

Property Information Contact Information Other Information

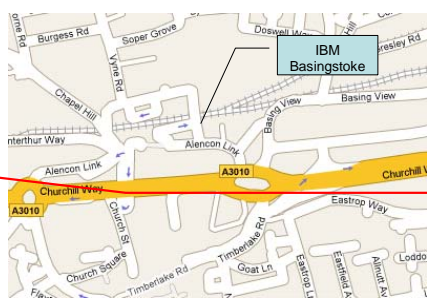
**Address 1** Normandy House  
**Address 2** Bunnian Place  
**Address 3** Alencon Link  
**City / Town** Basingstoke  
**County** Hants  
**Post Code** RG21 7EJ  
**Country** UK  
**Area** South

**Person** 8PRO266  
**Contact Name** John Smith  
**Contact Function** Facilities Manag  
**Primary Phone** 01131-112777  
**Out of Hours Phone** 07611-345678  
**Primary E-mail** John Smith@property.manager.com

From HR System

**On Site Parking** 284  
**Off Site Parking** 82  
**Rented Parking** 0  
**Subsidiary**  
**Tenure Belongs To**

From Estates System







Region Utility Summary Filter 1 - 6 of 12

Region	Description	Utility Stream	Utility Type	Target Usage YTD	Actual Usage YTD
ENGLAND	England	ELECTRICITY	MIXED	670,995	661,636
ENGLAND	England	GAS	GAS	722,610	743,422
ENGLAND	England	WATER	TREATED	10,839	10,807
IRELAND	Ireland	ELECTRICITY	MIXED	158,275	156,068
IRELAND	Ireland	GAS	GAS	170,450	175,359
IRELAND	Ireland	WATER	TREATED	2,557	2,553

Area Utility Summary Filter 1 - 4 of 4

AREA	Description	Utility Stream	Utility Type	Target Usage YTD	Actual Usage YTD
NORTH EAST ENGLAND	North East England	ELECTRICITY	MIXED	72,410	71,400
NORTH WEST ENGLAND	North West England	ELECTRICITY	MIXED	142,220	140,234
SOUTH EAST ENGLAND	London and South East England	ELECTRICITY	MIXED	309,010	304,700
SOUTH WEST ENGLAND	South West England	ELECTRICITY	MIXED	147,355	145,302

Property Summary Filter 1 - 5 of 5

Property	Description	Property Type	Utility Stream	Utility Type	Target Usage YTD	Actual Usage YTD
HULL	Hull Property	OFFICE	ELECTRICITY	MIXED	9,230	9,102
LEEDS	Leeds Property	OFFICE	ELECTRICITY	MIXED	27,820	27,432
LINCOLN	Lincoln Property	OFFICE	ELECTRICITY	MIXED	8,840	8,717
NEWCASTLE	Newcastle Property	OFFICE	ELECTRICITY	MIXED	8,970	8,844
SUNDERLAND	Sunderland Property	OFFICE	ELECTRICITY	MIXED	17,550	17,305

Property	LEEDS	Leeds Property	Property Type	OFFICE	Target Usage YTD	27,820
Utility Stream	ELECTRICITY		Status	OPERATING	Actual Usage YTD	27,432
Utility Type	MIXED				Measure Unit	KWH



# SMART Buildings

- Intelligent Building Systems
- Energy and Environment
- Space Management

IBM Software

# PCTY2010



Pulse Comes to You

Drawings Queries

Maps

- New Jersey
- Parsippany
- United States
- World
- USA
  - New York
    - 120 Beacon
    - 11th Floor
    - 12th Floor**

12th Floor Sep 11, 2009 6:33 PM

Zoom: 1

Show links Fill off Legend

AEM1E

**Third Floor**

Department	Sq Ft
Accounting	1660
Administration	2163
Building Services	4612
Corporate	3356
Dining Services	413
Information Services	1417
Operations	876
Real Estate	2060
Support	702
Vacant	1021
<b>Total</b>	<b>18281</b>

Videos  
 Sounds  
 Keys

Form: Data\_Panels Field: Building = Type search here Search

12th: 182,957  
 11th: 194,415  
 100.00

0 5000 10000 15000 20000 25000

Visible Layers

Select all Deselect all

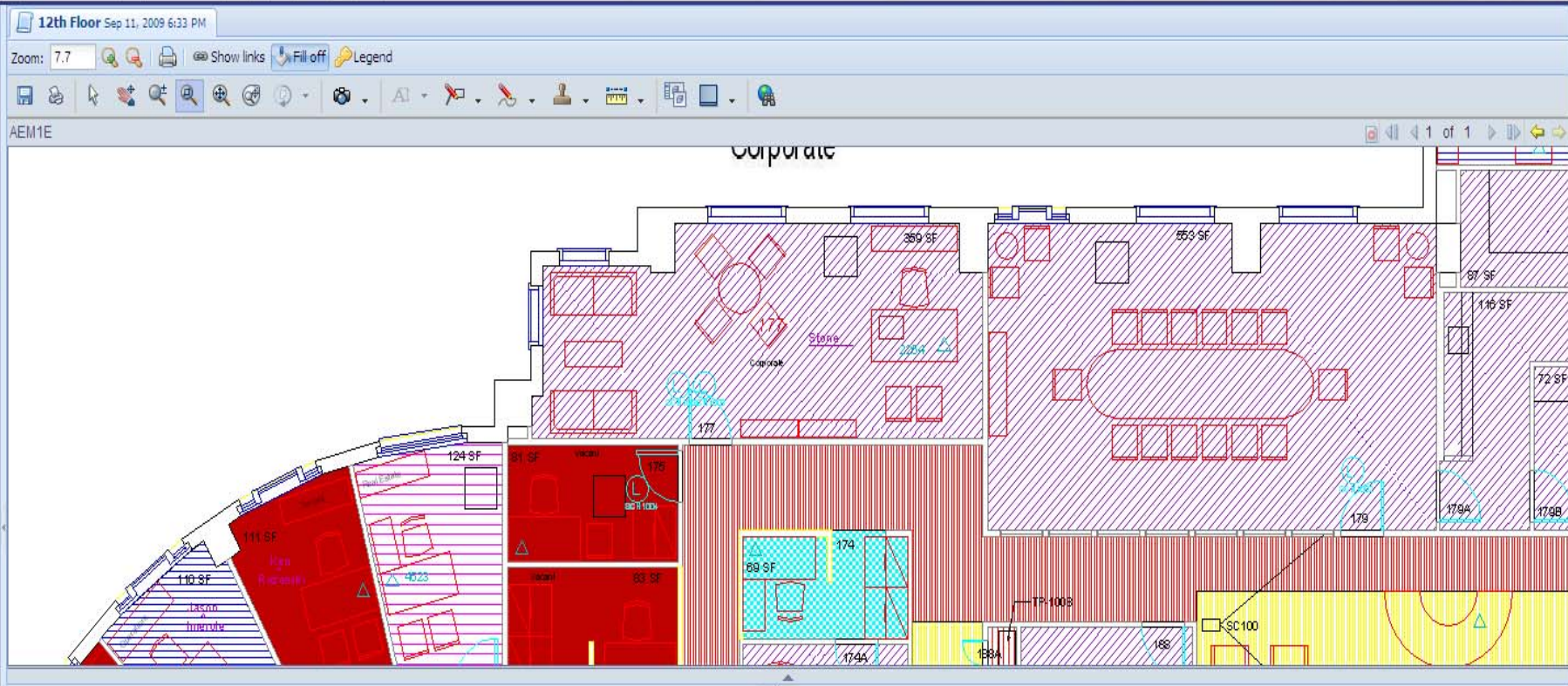
- ALL
- ARCHITECTURAL
- BASE
- DEMOLITION
- ELECTRICAL
- ELEVATIONS
- FACILITIES
- INTERIORS

Form - Data\_Panels





- Drawings
- Queries
- New query Refresh
- Public Queries
- My Public Queries
  - Computer Repair
  - Data Panels
  - Data Port Destinations
  - Department Pie Chart
  - Employee Count by Dept.
  - Employee Count by Division
  - Employee Listing**
  - Jacks
  - PersonnelDayOfMonth
  - PersonnelFullDate
  - PersonnelMonth
  - PersonnelYear
  - Projects
  - Racks - Available Space
  - Rentable Space
  - Room Listing
  - Security - Groups/Users
  - Security - Users/Groups
  - Servers
  - Servers 1
  - Total SF by Dept.
  - Total SF by Div/Dept
  - Total SF by Division
  - User Network ID
  - Vacant Room Listing
- My Private Queries
  - Employee Count by Dept (Custom SQL Q...
- Other Private Queries



Department	Last Name	First Name	Title	Type	Employee ID	Email	Room	Drawing Link
<b>Division: null</b>								
	Palmer	Jack		Contractor	PALMER,J	jack_palmer@comtekadd.com	189	<a href="#">11th Floor</a>
<b>Division: Administration</b>								
Administration	Cline	Fred	Manager	Employee	CLINE,F	dine_fred@comtekadd.com	137B	<a href="#">12th Floor</a>
Administration	Peel	Matt	Manager	Contractor	PEEL,M	matt_peel@comtekadd.com	157	<a href="#">11th Floor</a>
Administration	Valentine	Linda	Administrative	Employee	VALENTINE,L	linda_valentine@comtekadd.com	138	<a href="#">12th Floor</a>
Dining Services	Ziegler	Teri	VP	Employee	ZIEGLER,T	teri_ziegler@comtekadd.com	135	<a href="#">11th Floor</a>
Information Services	Jones	Kim	Manager	Employee	JONES,K	kim_jones@comtekadd.com	141	<a href="#">12th Floor</a>
Information Services	Ulsen	Linda	Manager	Employee	ULSEN,L	linda_ulsen@comtekadd.com	148	<a href="#">12th Floor</a>
Support	Ulsen	Linda	VP	Employee	ULSEN,L	linda_ulsen@comtekadd.com	151	<a href="#">12th Floor</a>

## Space Management

Space Design

Move  
Management

Occupancy  
Management

Cable  
Management

Import/Export CAD Documents

Drag and Drop Configuration

Multi-revision support

Support Individual or Group Moves

Optimize space utilization

What-if scenarios

Increased Service Levels

Reduce Labor Costs

Drag and Drop capabilities

Reduce costs through consolidation

Regulatory Requirements

Implement more Energy efficient configuration

Avoid unnecessary facility expansion

Charge-back based on usage

Trace mechanical, electrical, telco, plumbing from point to point

Understand dependencies, locate shut off

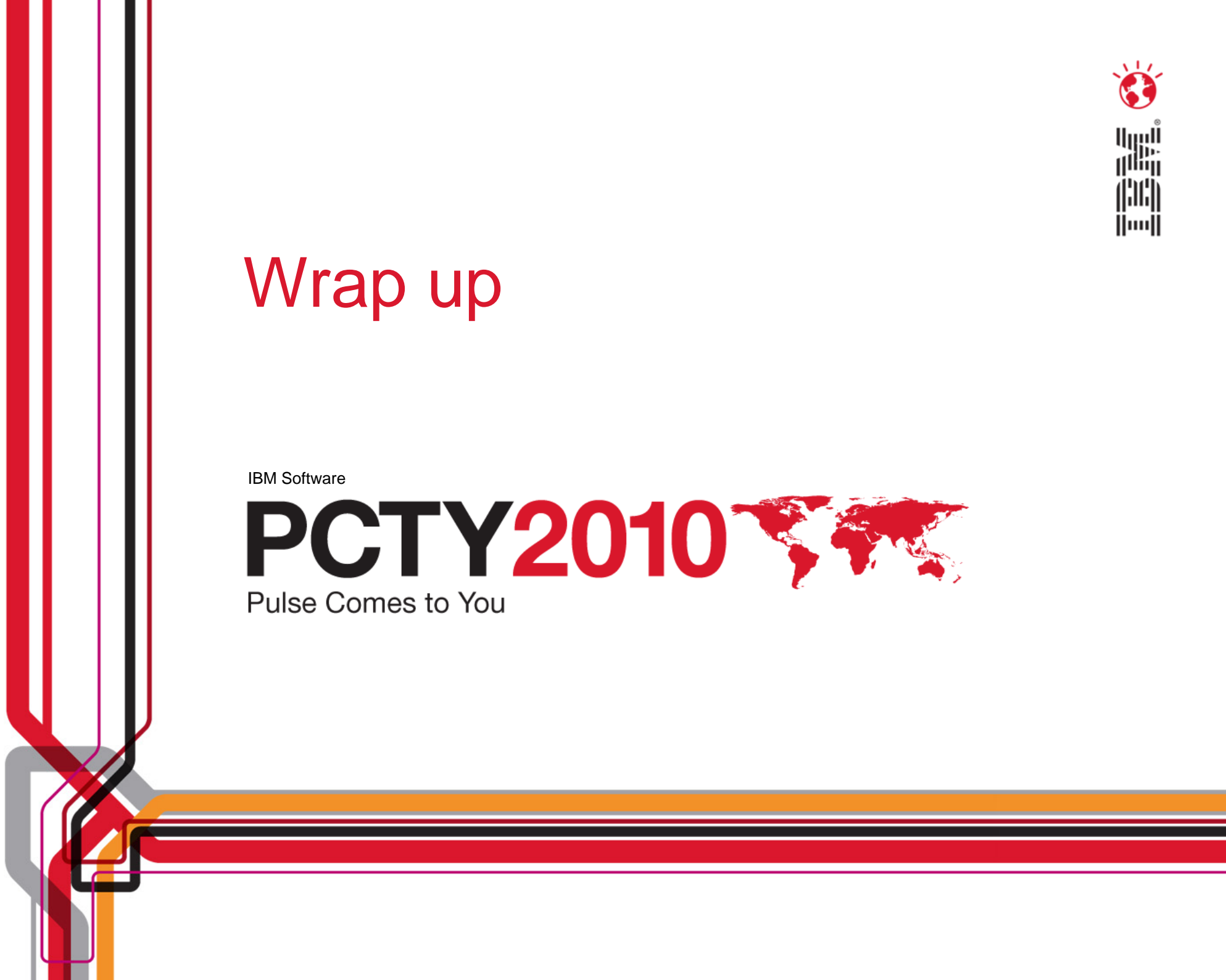




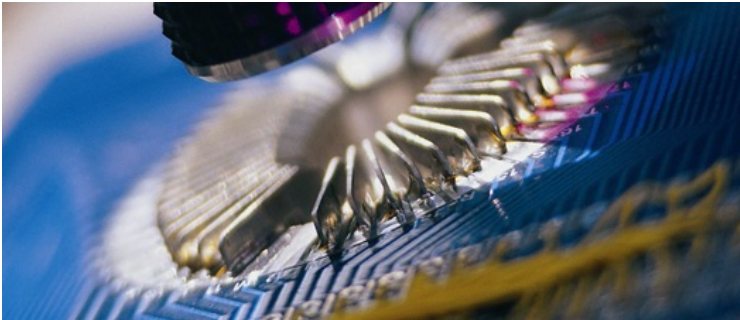
# Wrap up

IBM Software

**PCTY2010**   
Pulse Comes to You



# Smart Asset Management - foundation for a Smarter Planet.



**Smart Products** are already transforming the world and the way in which we interact with it.

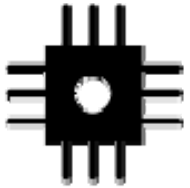


**Smart Asset Management** is supporting - and managing this new environment.



Let's work together to make us act smarter

# Acting Smart will Embrace Better Performance



Our world is becoming

**INSTRUMENTED**



Our world is becoming

**INTERCONNECTED**



All things becoming

**INTELLIGENT**

- ▶ **S**afe
- ▶ **M**aintainable
- ▶ **A**vailable
- ▶ **R**eliable
- ▶ **T**raceable

***SMART asset management brings value to your Business  
which makes this planet a SMART planet.***



Please contact us for  
**additional Product Information,**  
 or in-depth demonstration:

**G.E.T. (Eddy) Johannes**

*IBM Nederland B.V.  
 Johan Huizingalaan 765  
 1066 VH Amsterdam  
 The Netherlands*

*IBM Software Group*

*Tel +31 (0)20 513 3690  
 Fax +31 (0)20 617 0726  
 Mobile +31 (0)6 51578463  
 Eddy.Johannes@nl.ibm.com*