



LSU Nordic

**z/OS 1.9**  
**New Face of z/OS**

**Large Systems Update Seminar**  
**October 2007**

*Ole Reitzel Jensen*

**IBM Nordic TIM**  
**e-Mail: [orj@dk.ibm.com](mailto:orj@dk.ibm.com)**

# Trademarks

The following are trademarks of the IBM Corporation in the United States and/or other countries.

APPN*	HiperSockets	OS/390*	VM/ESA*
CICS*	HyperSwap	Parallel Sysplex*	VSE/ESA
DB2*	IBM*	PR/SM	VTAM*
DB2 Connect	IBM eServer	Processor Resource/Systems Manager	WebSphere*
DirMaint	IBM e(logo)server*	RACF*	z/Architecture
e-business logo*	IBM logo*	Resource Link	z/OS*
ECKD	IMS	RMF	z/VM*
Enterprise Storage Server*	Language Environment*	S/390*	z/VSE
ESCON*	MQSeries*	Sysplex Timer*	zSeries*
FICON*	Multiprise*	System z	z9
GDPS*	NetView*	System z9	
Geographically Dispersed Parallel Sysplex	On demand business logo	TotalStorage*	
		Virtualization Engine	

\* Registered trademarks of IBM Corporation

The following are trademarks or registered trademarks of other companies.

Java and all Java-related trademarks and logos are trademarks of Sun Microsystems, Inc., in the United States and other countries

Linux is a registered trademark of Linus Torvalds in the United States, other countries, or both.

UNIX is a registered trademark of The Open Group in the United States and other countries.

Microsoft, Windows and Windows NT are registered trademarks of Microsoft Corporation.

Red Hat, the Red Hat "Shadow Man" logo, and all Red Hat-based trademarks and logos are trademarks or registered trademarks of Red Hat, Inc., in the United States and other countries.

SET and Secure Electronic Transaction are trademarks owned by SET Secure Electronic Transaction LLC.

\* All other products may be trademarks or registered trademarks of their respective companies.

**Notes:**

Performance is in Internal Throughput Rate (ITR) ratio based on measurements and projections using standard IBM benchmarks in a controlled environment. The actual throughput that any user will experience will vary depending upon considerations such as the amount of multiprogramming in the user's job stream, the I/O configuration, the storage configuration, and the workload processed. Therefore, no assurance can be given that an individual user will achieve throughput improvements equivalent to the performance ratios stated here.

IBM hardware products are manufactured from new parts, or new and serviceable used parts. Regardless, our warranty terms apply.

All customer examples cited or described in this presentation are presented as illustrations of the manner in which some customers have used IBM products and the results they may have achieved. Actual environmental costs and performance characteristics will vary depending on individual customer configurations and conditions.

This publication was produced in the United States. IBM may not offer the products, services or features discussed in this document in other countries, and the information may be subject to change without notice. Consult your local IBM business contact for information on the product or services available in your area.

All statements regarding IBM's future direction and intent are subject to change or withdrawal without notice, and represent goals and objectives only.

Information about non-IBM products is obtained from the manufacturers of those products or their published announcements. IBM has not tested those products and cannot confirm the performance, compatibility, or any other claims related to non-IBM products. Questions on the capabilities of non-IBM products should be addressed to the suppliers of those products.

Prices subject to change without notice. Contact your IBM representative or Business Partner for the most current pricing in your geography.



**ENABLING BUSINESS.  
A THROUGH Z.**

## Notice & Disclaimers

Copyright © 2006 by International Business Machines Corporation.

No part of this document may be reproduced or transmitted in any form without written permission from IBM Corporation.

Product information and data has been reviewed for accuracy as of the date of initial publication. Product information and data is subject to change without notice. This document could include technical inaccuracies or typographical errors. IBM may make improvements and/or changes in the product(s) and/or programs(s) described herein at any time without notice.

References in this document to IBM products, programs, or services does not imply that IBM intends to make such products, programs or services available in all countries in which IBM operates or does business. Consult your local IBM representative or IBM Business Partner for information about the product and services available in your area.

Any reference to an IBM Program Product in this document is not intended to state or imply that only that program product may be used. Any functionally equivalent program, that does not infringe IBM's intellectual property rights, may be used instead. It is the user's responsibility to evaluate and verify the operation of any non-IBM product, program or service.

THE INFORMATION PROVIDED IN THIS DOCUMENT IS DISTRIBUTED "AS IS" WITHOUT ANY WARRANTY, EITHER EXPRESS OR IMPLIED. IBM EXPRESSLY DISCLAIMS ANY WARRANTIES OF MERCHANTABILITY, FITNESS FOR A PARTICULAR PURPOSE OR INFRINGEMENT. IBM shall have no responsibility to update this information. IBM products are warranted according to the terms and conditions of the agreements (e.g., IBM Customer Agreement, Statement of Limited Warranty, International Program License Agreement, etc.) under which they are provided. IBM is not responsible for the performance or interoperability of any non-IBM products discussed herein.

## Notice & Disclaimers

The performance data contained herein was obtained in a controlled, isolated environment. Actual results that may be obtained in other operating environments may vary significantly. While IBM has reviewed each item for accuracy in a specific situation, there is no guarantee that the same or similar results will be obtained elsewhere.

The responsibility for use of this information or the implementation of any of these techniques is a customer responsibility and depends on the customer's or user's ability to evaluate and integrate them into their operating environment. Customers or users attempting to adapt these techniques to their own environments do so at their own risk. IN NO EVENT SHALL IBM BE LIABLE FOR ANY DAMAGE ARISING FROM THE USE OF THIS INFORMATION, INCLUDING BUT NOT LIMITED TO, LOSS OF DATA, BUSINESS INTERRUPTION, LOSS OF PROFIT OR LOSS OF OPPORTUNITY.

Information concerning non-IBM products was obtained from the suppliers of those products, their published announcements or other publicly available sources. IBM has not necessarily tested those products in connection with this publication and cannot confirm the accuracy of performance, compatibility or any other claims related to non-IBM products. Questions on the capabilities of non-IBM products should be addressed to the suppliers of those products.

The provision of the information contained herein is not intended to, and does not, grant any right or license under any IBM patents or copyrights. Inquiries regarding patent or copyright licenses should be made, in writing, to:

IBM Director of Licensing  
IBM Corporation  
North Castle Drive  
Armonk, NY 10504-1785  
U.S.A.

Any statements regarding IBM's future direction and intent are subject to change or withdrawal without notice, and represent goals and objectives only.

## New Face of z/OS...

- **The New Face initiative is a series of ongoing efforts designed to simplify the management, administration and configuration of the system:**
  - New user interfaces (UIs)
  - **Enablement of remote access technologies**
  - **Extensions to base operating system components to allow for such management**
- **Marketplace forces, including the ‘graying of the z/OS work force’, added to the difficulty to attract and train new skills to this platform due to the perception that the management tools are archaic (3270), demand that the platform improve and modernize accessibility in a way that is in common with the rest of the industry.**
- **In z/OS R9, a set of small steps have been taken to start laying the foundation for simplified access to the platform.**



# z/OS Management Simplification Strategy

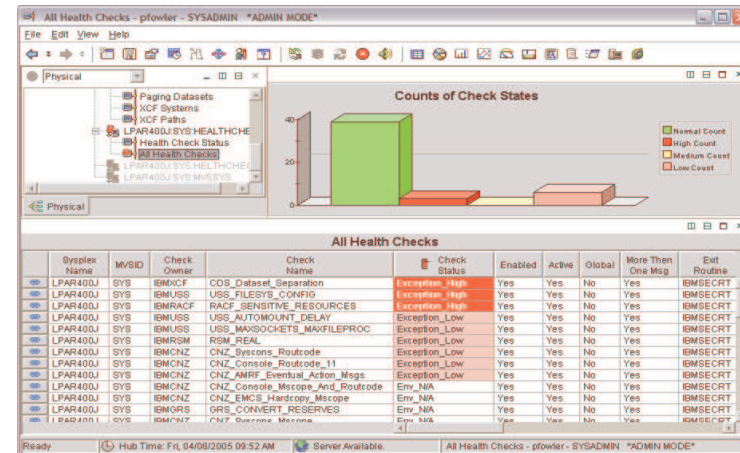
Today



**Expert-friendly, long learning curve for people new to platform**

- Multiple, inconsistent UIs – no central system management portal
- Many interfaces foreign to those new to platform
- Manual tasks requiring extensive documentation
- Years of z/OS experience

Tomorrow



- ✓ **Central** z/OS management portal
- ✓ **Simplified, automated** task-oriented mgmt interface, with integrated user assistance
- ✓ **Modern** look & feel; more familiar to those new to platform
- ✓ Focus on **customer goals**
- ✓ **Optional** for those who prefer traditional interfaces
- ✓ Months of training

## New tools enhancing the “MVS face” of z/OS...

- **System REXX:**
  - REXX execs to be executed outside TSO/E and batch environments
- **SDSF REXX**
  - Access to SDSF through the REXX programming language
- **XL C METAL compiler option**
  - C language capabilities for classical MVS exits
- **Common event adapter (CEA)**
  - Delivers z/OS events to C-language clients
- **XLM System Services enhancements**
  - Improved performance and C/C++ APIs

## z/OS 1.9 Application Development/Simplification

### *System REXX - overview*

- **SYSREXX**

- Is part of the BCP product, rollback support to z/OS 1.8 (Web deliverable)
- SYSREXX allows execs to be run simply and independently from traditional TSO/E & Batch

- **Exploiters**

- CIM Server .. Cluster Instrumentation
- Health Checker
- Open to exploitation by IBM, ISV and Customer Code

- **SYSREXX is a Server**

- Starts early during Master Scheduler Initialization
- No STOP capability but AXR address space can be forced



## z/OS 1.9 Application Development/Simplification

### *System REXX – details*

- **System REXX execs may be initiated through an assembler macro interface called `AXREXX` or via operator command**
- **Two execution environments supported: `TSO=NO` and `TSO=YES`**
- **Exec runs in problem state, key 8, in an APF authorized AS under the MASTER subsystem**
- **Any modules that are loaded, linked or attached from the exec must reside in an APF authorized library.**
- **Also in both cases, the REXX exec runs under the WLM enclave of the `AXREXX` invoker**
- **New functions for writing execs**
  - AXRCMD    issue console command and retrieve command response
  - AXRWTO    issue single line message to the console
  - AXRMLWTO issue multi line message to the console

## SYSREXX example

```
/*REXX*/  
MyCmd = 'D IPLINFO';  
Result = AXRCMD(MyCmd,'OutputVar.',10);  
IF Result = 0 THEN  
  DO;  
    IplVolume = ''  
    DO LineNum = 1 TO OutputVar.0 WHILE(IplVolume=' ');  
      PARSE var OutputVar.LineNum ' VOLUME ' IplVolume;  
    END;  
    .....  
  END;
```

Output from  
'd iplinfo' }

```
IEE254I 13.44.24 IPLINFO DISPLAY 923  
SYSTEM IPLED AT 12.09.29 ON 10/07/2007  
RELEASE z/OS 01.08.00 LICENSE = z/OS  
USED LOAD74 IN SYS1.IPLPARM ON 180C  
ARCHLVL = 2 MTLSHARE = N  
IEASYM LIST = (00,40)  
IEASYS LIST = (40,4A) (OP)  
IODF DEVICE 180C  
IPL DEVICE 1BEA VOLUME MDI4AB
```

## z/OS 1.9 Application Development/Simplification

### System REXX – TSO YES/NO

- **When TSO=NO on the AXREXX invocation**
  - Exec is executed in an MVS host command environment
  - Dataset allocation, other than REXXINDSN and REXXOUTDSN provided by the AXREXX macro, is not supported in this environment
- **When TSO=YES on the AXREXX invocation**
  - Exec runs isolated in a single AS, and can safely allocate datasets without concern of a DDNAME conflict with a concurrently running exec
- **Note that not every command, function or service that runs under the TSO/E is supported in the TSO=YES environment.**

There can be up to 64 REXX worker tasks, running TSO=NO execs and up to 8 TSO Server address spaces running TSO=YES execs.

## z/OS 1.9 Application Development/Simplification

### System REXX - security and enclave Considerations

- **AXREXX is an Authorized System Service**
  - Security Controls Essential
    - Access to APF Library
    - Permissions:
      - Standard security administration
        - > what can be accessed and/or run
- **EXECs by default use Invoker's Security Environment**
  - Alternatively may use:
    - Authority of a 3<sup>rd</sup> party
    - Special userid assigned to **AXRUSER**
- **EXECs use Invoker's Enclave service class**
  - Prevent CPU priority inversion and excessive resource usage
  - Resource usage is charged back

## z/OS 1.9 Application Development/Simplification

### *System REXX - installation and using*

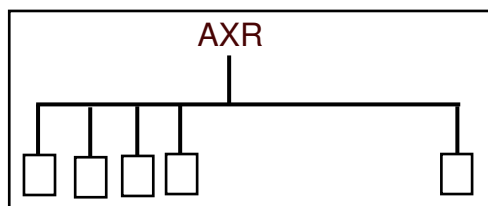
- **Starting SYSREXX Requires**
  - **CTIAXR00** Parmlib member
  - The **SYS1 .SAXREXEC** data set
    - REXX Execs Read From **SYS1 .SAXREXEC**
  - **Restart AXR** using the **AXRPSTRT** procedure
- **Parmlib Support**
  - SYSREXX Customization: **AXR00**
    - **CPF ('cpfvalue' , SYSTEM|SYSPLEX)**
    - **AXRUSER(userid)**
  - Component Trace (**SYSAXR**) : **CTIAXRxx**

# z/OS 1.9 Application Development/Simplification

## System REXX - REXX Server versus TSO Server

### REXX Server

- **Execs run in AXR AS**
  - 1-64 Worker Subtasks
  - EMCS for each subtask
  - Detach after 100 execs
  - Default HCE - MVS
  - Recommend no Data Set Allocation here
- **Availability impact if something serious breaks**



### TSO Server

- **Execs run in AXRnn AS**
  - 1-8 Worker Address Spaces
  - EMCS for each AS
  - Detach after 1000 execs
  - All Allocation capabilities
  - Default HCE + TSO
    - IKJTSOEV Service
    - SYSCALL not supported
- **Better availability should something serious break.. just cancel AXRnn AS**





## z/OS 1.9 Application Development/Simplification

### *SDSF REXX - overview*

- **SDSF REXX allows REXX execs to be written that can directly access SDSF data and function**
- **Using SDSF REXX, you can perform SDSF functions through REXX:**
  - Display and modify jobs
  - Display and modify devices
  - Browse sysout data sets
  - Print sysout data sets
- **Host environment commands**
  - **ISFEXEC**, executes an SDSF command
  - **ISFACT**, performs an SDSF action or column overtype

# z/OS 1.9 Application Development/Simplification

## SDSF REXX Quick Start – Cancel a Job

**rc=isfcalls("ON")**

Add host command environment

**Address SDSF "ISFEXEC ST"**

Access the ST panel

**do ix=1 to JNAME.0 (variable names same as FLD names)**

**if pos("KEN",JNAME.ix) = 1 then**

Find the job

**Address SDSF "ISFACT ST TOKEN("TOKEN.ix") PARM(NP P)"**

.....

**rc=isfcalls("OFF")**

Take an action on the job

Remove the host command environment (after closing the loop)

```

Display  Filter  View  Print  Options  Help
-----
SDSF STATUS DISPLAY ALL CLASSES                INVALID COMMAND
COMMAND INPUT ===>                               SCROLL ===> PAGE
NP   JOBNAME  JobID   Owner   Prty Queue   C  Pos  SAff  ASys Status
    CCOR      JOB13688 CCOR      15 EXECUTION  MVSG  MVSG
    
```

# z/OS 1.9 Application Development/Simplification

## SDSF REXX - More info

IBM z/OS SDSF (System Display and Search Facility) - Microsoft Internet Explorer

Address <http://www-03.ibm.com/servers/eserver/zseries/zos/sdsf/>

Country/region (select) Terms of use

IBM

Home Products Services & industry solutions Support & downloads My account

System Display and Search Facility

Overview

Hints and Tips

Summary Card

Related Products

IBM Systems > System z > z/OS >

## System Display and Search Facility

**Monitor, manage and control**

SDSF provides a powerful and secure way to monitor, manage and control your z/OS sysplex. Its easy-to-use interface lets you control

- jobs and output
- devices, such as printers, readers, lines, and spool offloaders
- checks from IBM Health Checker for z/OS
- system resources, such as WLM scheduling environments, the members of your JES2 MAS, and JES2 job classes
- system log and action messages

**SDSF REXX**  
SDSF does REXX! Read about this and other [recent enhancements](#). And check out the IBM redbook, [Implementing REXX Support in SDSF](#).

[Overview of HASPINDEX](#), including a discussion of sharing this data set among systems, and IBM recommendations. The HASPINDEX data set is used in building the SYSLOG panel.

**Today's tip**  
To quickly check if a job was successful, see the high condition code in the MAX-RC column on the H, O and ST panels.

**What's new**

- Product enhancements
- Download REXX models

**For more information**

- Product overview
- Summary card
- SDSF library
- Presentations
- Customization Wizard

About IBM Privacy Contact

Nokia PC Suite  
Nokia uno 6233 nedkopplad via Bluetooth Local intranet

<http://www-03.ibm.com/servers/eserver/zseries/zos/sdsf/>

Usefull redbook: Implementing REXX Support in SDSF SG24-7419-00

## z/OS 1.9 Application Development ...

- **New METAL C option:**

- Designed for XL C system program development
- No Language Environment run-time dependency
- Can imbed HLASM statements in a C program
- Assembler calls to system services are allowed
- XL C/C++ support in IBM WebSphere Developer for System z V7.0 (5724-L44)
- AR mode programming support

## z/OS 1.9 METAL C

*Programmer supplied prolog/epilog code*

- **The compiler generates default prolog/epilog code which operates on a 1M stack space.**
- **It may be necessary for the programmer to supply his/her own prolog/epilog code to set up whatever the environment is necessary.**

## z/OS 1.9 METAL C

### *Programmer embedded HLASM statements*

**syntax: `__asm ( code_format_string : output : input : clobbers)`**

```
int main() {
    struct WTO_PARM {
        unsigned short len;
        unsigned short code;
        char text[80];} wto_buff = { 4+11, 0, "hello world" };
    __asm( " WTO MF=(E, (%0)) " : : "r" (&wto_buff));
    return 0;
}
```

```
LA 4, @wto_buff
WTO MF=(E, (4))
```



## z/OS 1.9 METAL C

### *AR mode programming support*

- **C language construct provided for:**
  - Marking a function to be an AR mode function by the `__attribute__((armode))` attribute
  - Qualifying a pointer to be a far pointer by the `__far` qualifier.
- **Supported for both 31-bit and 64-bit mode.**
- **The DSPSERV and ALESERV macros can be used to create data spaces**

## Overview – z/OS Common Event Adapter

- **The z/OS Common Event Adapter enables a z/OS Unix process to subscribe to various “legacy” asynchronous BCP events by type and matching criteria:**
  - WTO
  - ENF
  - Program Specified Event
- **Value:**
  - Extends the reach of “legacy” events to z/OS Unix processes.
  - Components with existing events do not have to be re-implemented to communicate with CIM indication providers.
- **Notes:**
  - CEA address space started automatically during z/OS initiation and does not terminate

## z/OS 1.9 Application Development

### *XML System Services enhancement - overview*

- **Using XML System Services R9 you can:**
  - Realize improved performance for XML parsing
  - Use the C/C++ interfaces to invoke the XML parser
  - Take advantage of zAAP specialty engines for XML parsing
- **Performance:**
  - Improvements primarily made to internal algorithms
  - About a **30% improvement in performance** attained (cycles per bytes parsed)
- **Interfaces:**
  - With new C/C++ APIs no need to switch to PL/1 or assembler to invoke XML System Services
- **zAAP**
  - XML code switches over to zAAPs prior to parsing a document.
  - zAAP do not apply, when running in SRB mode.

## z/OS 1.9 Application Development

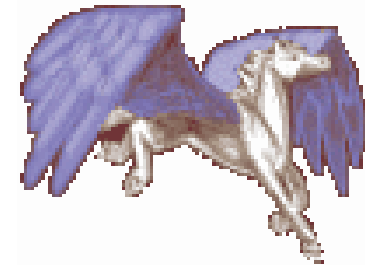
### *XML System Services enhancement - future*

- z/OS XML System Services parsing workload done in TCB mode offloaded to zAAP, enclave-mode SRB work to zIIP in the future \*
- IBM intends to add validating parsing to z/OS XML System Services \*
- IBM intends to enhance the XML Toolkit for z/OS so eligible workloads use z/OS XML\*

*\*All statements regarding IBM future direction and intent are subject to change or withdrawal without notice, and represent goals and objectives only.*

## Common Information Model (CIM)

- **CIM is a standard data model developed by a consortium of major hardware and software vendors (including IBM) called the **Distributed Management Task Force (DMTF)** as part of the **Web Based Enterprise Management (WBEM)** initiative. CIM was introduced in z/OS V1R7.**
- **WBEM includes a set of standards and technologies that provide management solutions for a distributed network environment. Interoperability is a major focus of WBEM and using WBEM technologies can help you develop a single set of management applications for a diverse set of resources.**
- **CIM implementation in z/OS is based on the open source Pegasus CIM server (CIMOM – Common Information Model Object Manager)**
- **OpenPegasus CIM Server 2.6 with CIM schema 2.11**



## Common Information Model (CIM)

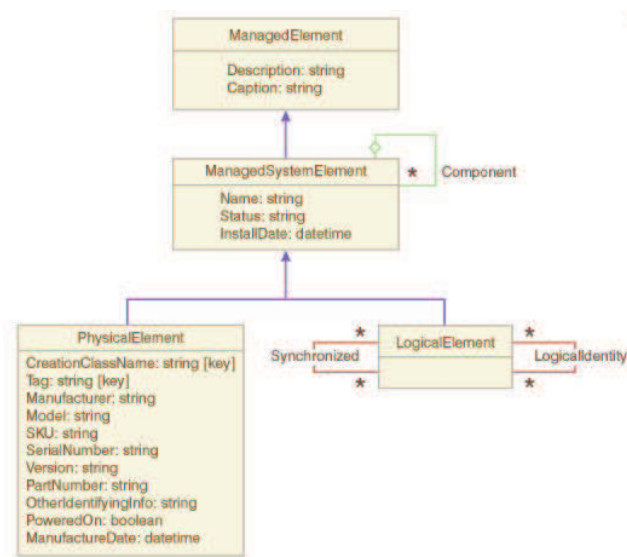
- **With z/OS 1.9 we have a new System management solution based on WBEM standards that provide management solutions for a distributed network environment. WBEM includes**
  - A data model, CIM
  - An encoding specifications, CIM-XML
  - A transport mechanism, CIM over HTTP





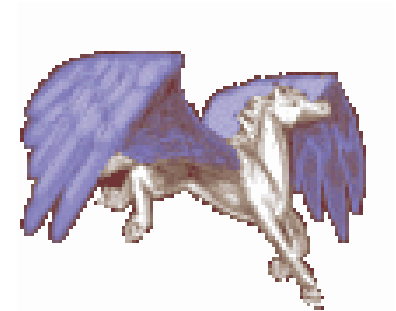
## Common Information Model (CIM)

- **CIM is a standard data model for describing and accessing management data in heterogeneous environments**



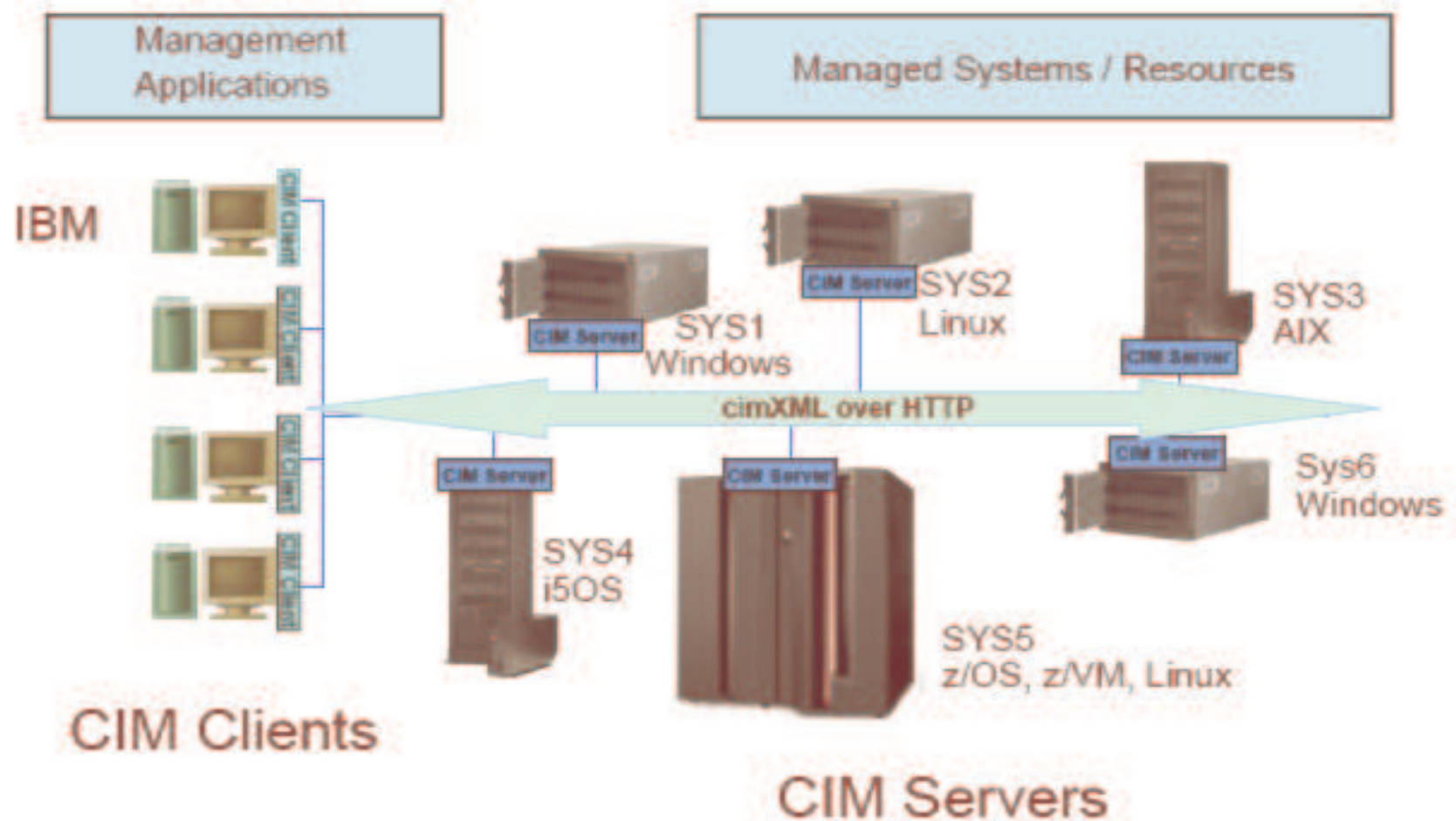
## Common Information Model (CIM)

- **CIM implementation in z/OS is based on the open source Pegasus CIM server (CIMOM – Common Information Model Object Manager)**
- **OpenPegasus CIM Server 2.6 with CIM schema 2.11**
- **With CIM Server on z/OS users have the ability to access z/OS resources through an extendible industry standard model**



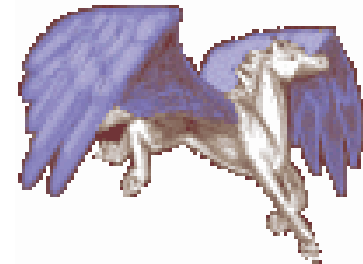
# Common Information Model (CIM)

*Network Environment Managed with CIM Management Applications*



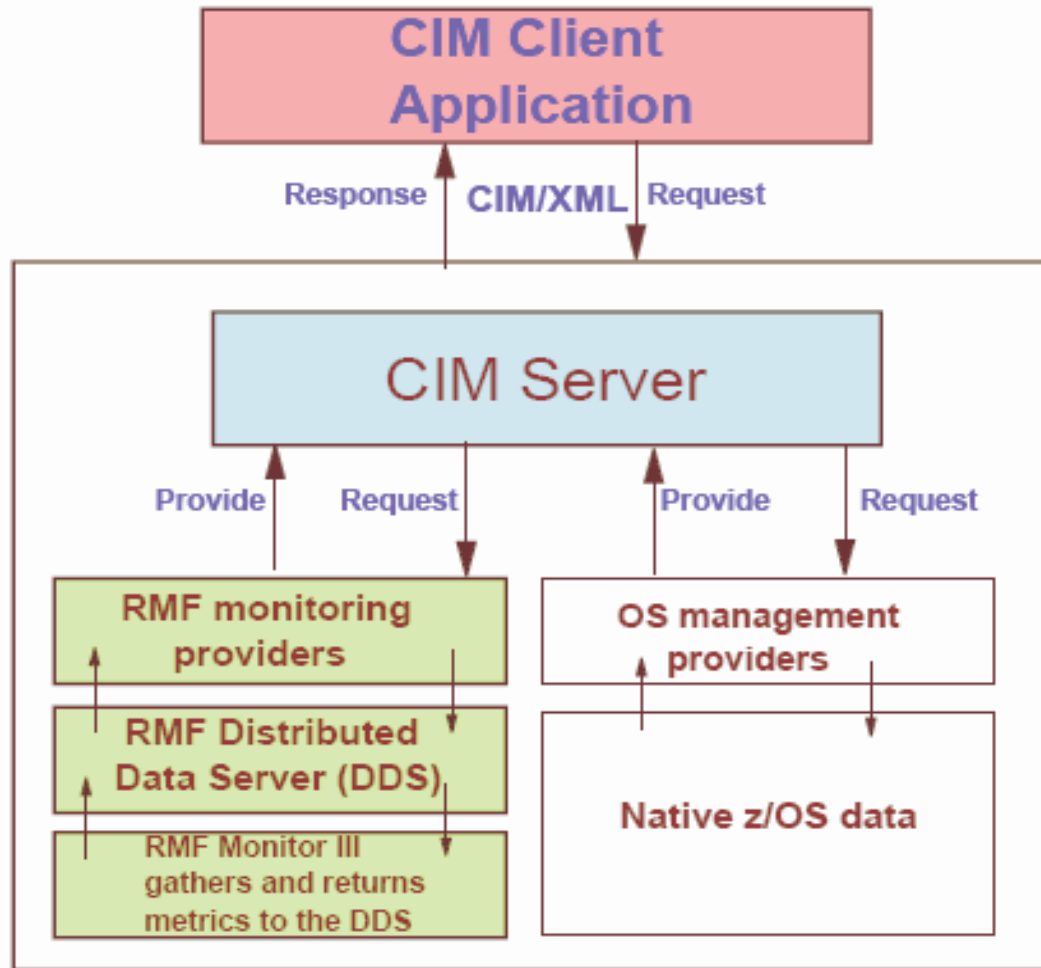
## Common Information Model (CIM)

- **WBEM defines how the clients communicate with the Server**
  - CIM-XML over HTTP protocol
  - CIM operations over HTTP
  - CIM Server supports AT-TLS



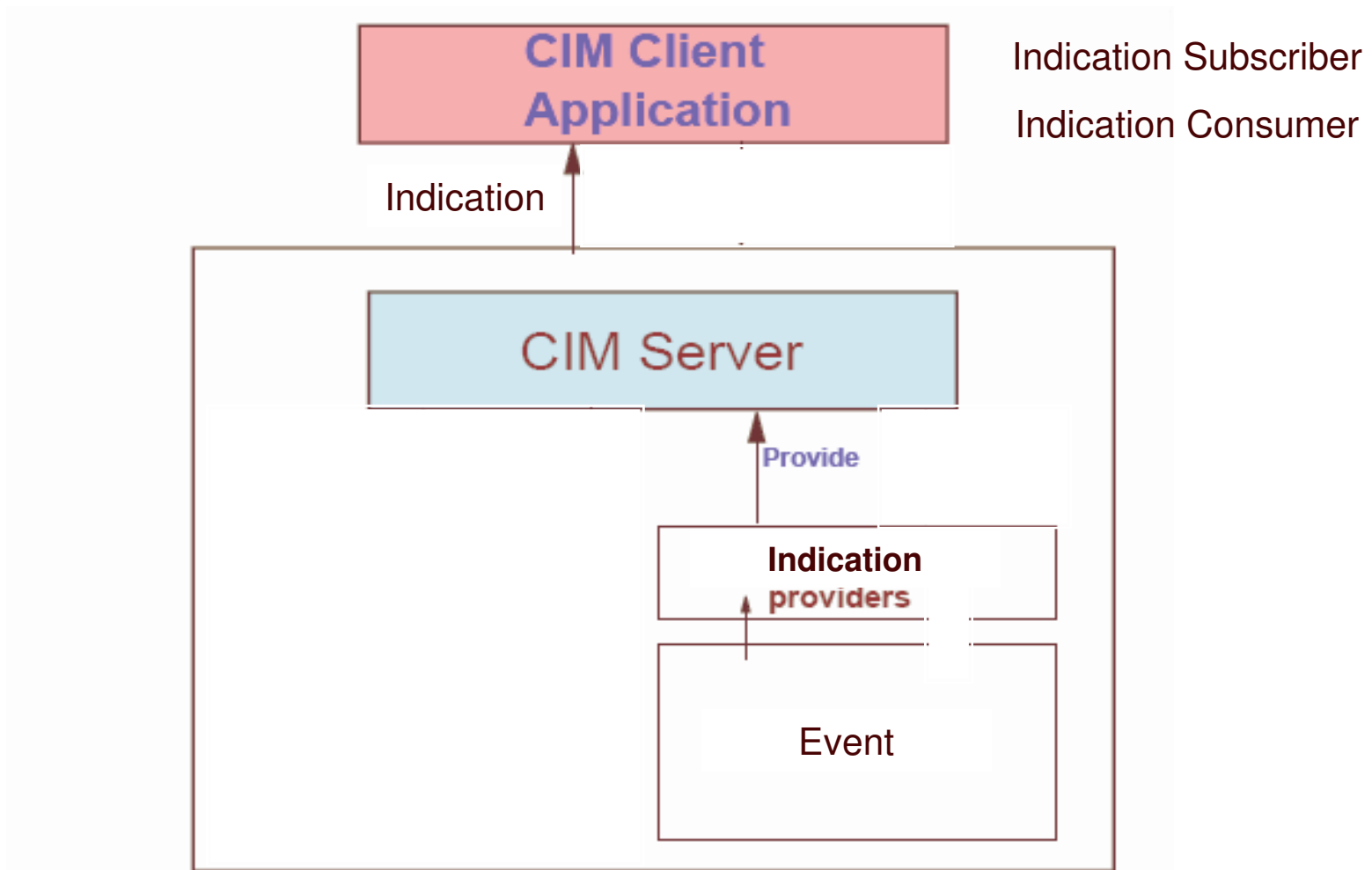
# Common Information Model (CIM)

*Example with MF monitoring provider*



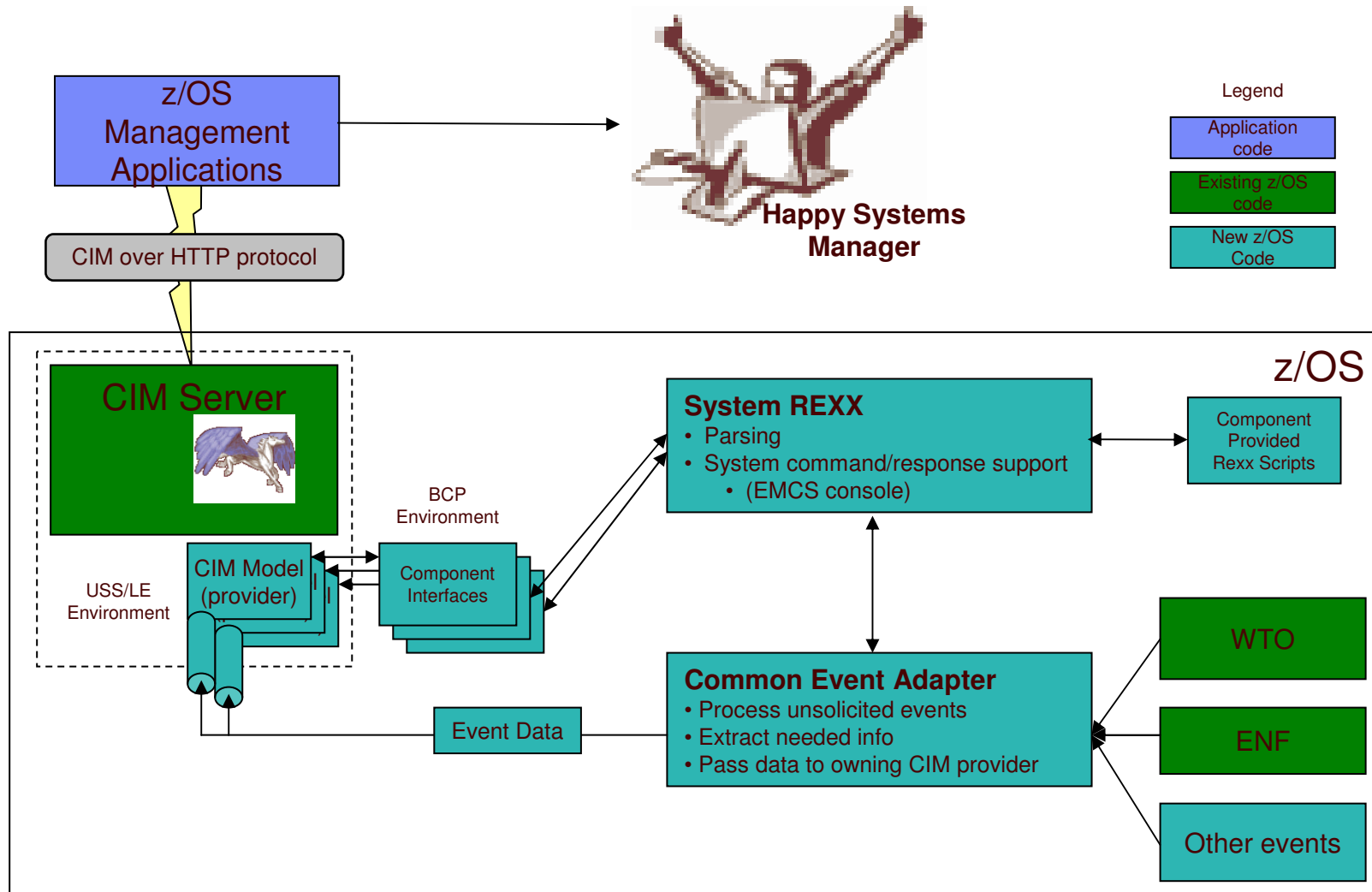
# Common Information Model (CIM)

*Example with MF indication provider*





# z/OS – CIM Overview



## CIM - Security

- **Since this support allows for the modification of key system resources, maintaining appropriate authorization is key:**
  - The CIM server authenticates the end user,
  - The CIM server checks the authority of the user based on provider level checks,
  - The credentials of the user are propagated from the CIM server, through the provider, down to the CEA, SYSREXX and other component interfaces, where authorization checks are made.

## CIM – Wrap up

### ■ **News in z/OS V1R9**

- CIM Client for Java
- Instrumentation added for jobs, sysplex and coupling facility resource management
- Automatic restart using ARM
- Logging changed to use system logger

### ■ **z/OS Management instrumentation for CIM**

- Processor classes
- File system classes
- Network classes
- WLM classes
- CIM classes implemented by RMF

## Other New Faces (GUI initiatives)

- **IBM Ported Tools for z/OS**

- OpenSSH
- Perl
- PHP

- **Eclipse based access to z/OS**

- Rational Developer for System z (former WDz)<sup>1</sup>
- WebSphere Developer Debugger for System z

1) direct access to zOS and USS file systems, access to JES, ISPF like editor, interactive debug

## Other New Faces (Education)

- **zNextGen Project at Share**



- **z/OS basic skills information center**

- z/OS concepts
- Application programming on z/OS
- ....



- **ABCs of z/OS System Programming**



- **IBM Academic Initiative System z program**

## z/OS Basic Skills Information Center

- Great for new users or for current users can brush up on existing skills
- Information for “on-the-job” training
- Educational topics plus interactive exercises

The screenshot shows the IBM z/OS Basic Skills Information Center website. The page is titled "z/OS basic skills information center" and features a navigation menu on the left. The main content area lists several topics with links to HTML and PDF versions:

- z/OS concepts**: Get started with the fundamental concepts of z/OS.
- System programming on z/OS**: We reveal the inner workings of z/OS.
- Application programming on z/OS**: Learn about the application development environment on z/OS.
- Interactive courses**: Mainframe hardware, ISPF, and JCL courses available.
- Networking on z/OS**: Learn the fundamentals of TCP/IP and...
- Glossary of z/OS terms**: Learn to speak z/OS.
- Security on z/OS**: Understand why z/OS is the most...

The page also includes a search bar, navigation tabs (Home, Products, Services & solutions, Support & downloads, My account), and a "Contents" sidebar. A URL box at the bottom of the screenshot contains the following address:

<http://publib.boulder.ibm.com/infocenter/zoslnctr/v1r7/index.jsp>



# ABCs of z/OS System Programming

The screenshot shows the IBM Redbooks website interface. At the top, there is a navigation bar with links for Home, Solutions, Services, Products, Support & downloads, and My IBM. A search box is visible on the right. Below the navigation bar, the page title is 'IBM Redbooks > IBM System z'. The main content area features the Redbooks logo and the title 'ABCs of z/OS System Programming Volume 1'. A sidebar on the left contains a list of categories: IBM Redbooks, Drafts, Redbooks, Redpapers, Technotes, Workshops, Additional Materials, How to order, About Redbooks, Contact us, Mailing list, RSS feeds, and Related links. The main content area includes a section for 'Users who downloaded this book also downloaded ...' and an 'Abstract' section. The abstract text describes the ABCs collection as a ten-volume introduction to the z/OS operating system and hardware architecture, listing specific topics covered in Volume 1 and the contents of the other volumes.

<http://www.redbooks.ibm.com/Redbooks.nsf/RedbookAbstracts/sg246981.html?OpenDocument>

**Abstract**

The ABCs of z/OS System Programming is a ten volume collection that provides an introduction to the z/OS operating system and the hardware architecture. Whether you are a beginner or an experienced system programmer, the ABCs collection provides the information that you need to start your research into z/OS and related subjects. If you would like to become more familiar with z/OS in your current environment, or if you are evaluating platforms to consolidate your e-business applications, the ABCs collection will serve as a powerful technical tool.

Volume 1 provides an understanding of the software and zSeries architecture and how it is used together with the z/OS operating system. This includes the main components of z/OS needed to customize and install the z/OS operating system. Specific topics covered in this volume are:

- Introduction to the products and components that make up a z/OS system
- z/OS storage concepts
- The main components needed to install and customize z/OS: TSO/E, ISPF, JCL, and SDSF
- The z/OS delivery options and the download process using the ServerPac option

The contents of the other volumes are as follows:

- Volume 2: z/OS implementation and daily maintenance, defining subsystems, JES2 and JES3, LPA, LNKLST, authorized libraries, catalogs
- Volume 3: Introduction to DFSMS, storage management
- Volume 4: Communication Server, TCP/IP, and VTAM
- Volume 5: Base and Parallel Sysplex, system logger, global resource serialization, z/OS system operations, automatic restart management, hardware management console, performance management
- Volume 6: RACF, PKI, LDAP, cryptography, Kerberos, and firewall technologies
- Volume 7: Infoprint Server, Language Environment, and SMP/E
- Volume 8: z/OS problem diagnosis
- Volume 9: z/OS UNIX System Services
- Volume 10: Introduction to z/Architecture, zSeries processor design, zSeries connectivity, LPAR concepts, and HCD