

Business Team Capabilities Requirements

Before you select a Business Rule Management System (BRMS) vendor, consult this evaluation checklist. Compare with other offerings, and you'll see that only IBM® WebSphere® ILOG BRMS software offers all the capabilities you need for managing and automating the decision logic that drives critical business systems. That's why more and more organizations across every industry are selecting BRMS software from IBM, such as the WebSphere ILOG JRules BRMS.

Business User Rule Management

Key Functionality	IBM WebSphere ILOG BRMS	Other Vendor	Comments
Out-of-the-box, Web-based business user environment	Yes		WebSphere ILOG Rule Team Server (RTS), a collaborative, dedicated business team environment, is used for all phases of rule management. Enables high productivity and provides visibility for lines-of-business.
Role-based access control	Yes		Permission management in RTS.
Natural language rules	Yes		Customizable rule vocabulary.
Graphical rule metaphors	Yes		Decision table, decision trees, scorecards and ruleflows.
Guided rule authoring	Yes		Wizards, templates and interactive editors provided, plus guided authoring and maintenance in Microsoft® Office Word and Excel® with WebSphere ILOG Rule Solutions for Office.
Repository navigation	Yes		Ability to freely navigate in the repository using RTS, including user configurable navigation hierarchies (Smart Views).
Search	Yes		Customizable querying of the rule repository against rules and associated metadata, including querying against semantic content of rules.
Consistency checking	Yes		Checking that a rule does not conflict with other rules.
Rule versioning	Yes		Fine-grained versioning down to the rule artifact, including side-by-side graphical comparisons of different versions.
Rule life cycle management	Yes		Managing rule life cycle using configurable status settings.
Reporting	Yes		Document rule projects and rulesets with detailed reports.
Multilingual rule management support	Yes		Ability to support single rule project in multiple languages.

Testing and Simulation

Key Functionality	IBM WebSphere ILOG BRMS	Other Vendor	Comments
Comprehensive rule testing capabilities integrated directly within both the technical development and business user rule management environments	Yes		WebSphere ILOG Decision Validation Services (DVS), critical functionality to ensure that rules execute correctly.
Rule simulation	Yes		DVS – assess the business impact of business rule changes prior to deployment; define and measure simulation results against key performance indicators (KPIs) unique to your business.
Multiple input sources for testing and simulation source data	Yes		Ability to access data from Microsoft Excel, XML and databases.
Detailed rule execution audit	Yes		Decision Warehouse (DVS component) in the JRules Rule Execution Server, allowing Web-based access to execution data and assorted business rules.

Technical Team Capabilities Requirements

Integrated Development Environment

Key Functionality	IBM WebSphere ILOG BRMS	Other Vendor	Comments
Refactoring facilities	Yes		Refactoring of the rule project when object model is modified.
Incremental build	Yes		Rule Studio allows applications to be created using an iterative development approach.
Multiple SCC support	Yes		Support of various source code control tools.
Arbitrary SCC support	Yes		Support of various source code control tools.
Integrated rule/Java™ debugging	Yes		Rules and Java code debugging is done in the same environment.
Project template, map and cheat sheets	Yes		Accessible to beginners. Easy to create rule projects.

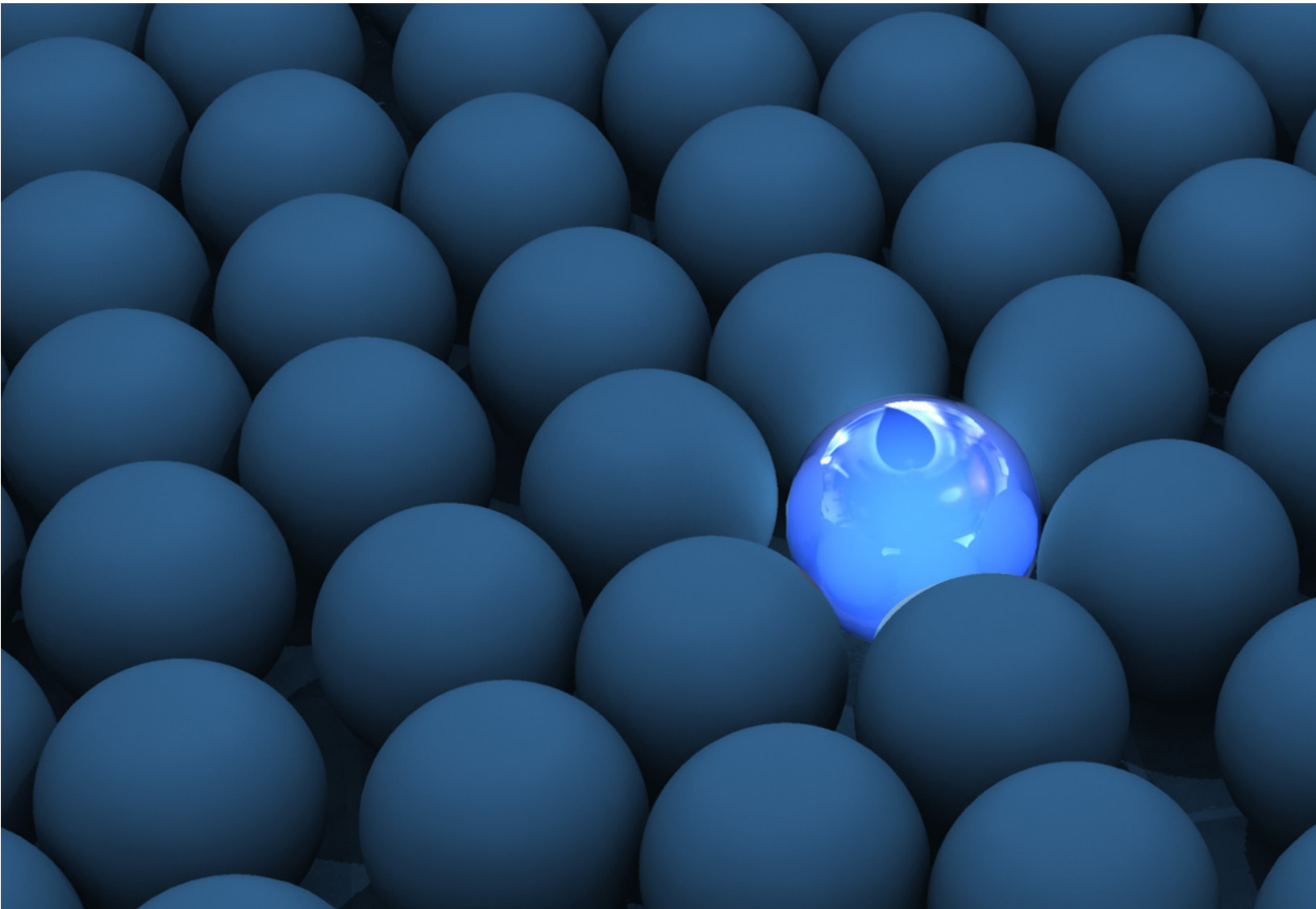
Deployment and Run Time Environment

Key Functionality	IBM WebSphere ILOG BRMS	Other Vendor	Comments
Web-based rule application management environment for System Administrators	Yes		JRule Rule Execution Server (RES) console, providing centralized management and monitoring of deployed rule applications.
Out-of-the-box deployment from IDE or rule management environment	Yes		Rulesets can be deployed through RES directly from Rule Studio or Rule Team Server.
Hot deployment	Yes		New or modified rules/rulesets can be deployed into production without interrupting rule engine execution.
Script-based management	Yes		Ability to invoke deployment and execution remotely from external applications.
Transparent decision services	Yes		One-click implementation of a ruleset as a Web service (WSDL).
Multiple rule engine execution algorithms	Yes		Best-of-breed rule engine, designed to handle specific application requirements and provide optimal performance. Includes inference (Rete), sequential and Fastpath (augmented sequential) execution algorithms.
Multiple platform support	Yes		The JRules BRMS supports multiple application servers, databases and operating systems including AIX, HP-UX, Linux, Solaris, Windows and z/OS. Rules can be deployed on J2EE, J2SE and SOA platforms.
JMX-based management facility	Yes		Allows integration with external monitoring systems, such as IBM Tivoli®.

Technical Team Capabilities Requirements

Integration and OEM/ISVs Capabilities

Key Functionality	IBM WebSphere ILOG BRMS	Other Vendor	Comments
Customizable interfaces	Yes		Multiple options for customizing Rule Team Server (RTS) or embedding RTS functionality in other applications.
Extensible interfaces	Yes		Ability to add custom menus or custom tabs in RTS.
Language extension	Yes		Ability to extend the vocabulary and rule structure, customizing a token model.
Open Rules Repository	Yes		Supports XML and relational database schemas.
COBOL Code Generation	Yes		WebSphere ILOG Rules for COBOL allows rules managed in the BRMS to be generated as code which can be used directly within COBOL-based applications.



Next Steps



Request a custom demo

Our interactive demonstrations are performed either online or on site and are scheduled at your convenience (depending on the availability of our product experts). We will be happy to travel to your site for groups of five or more.

Request a Discovery Workshop

Two day, complimentary workshop designed to help business and IT teams work through their project questions together, ensuring that BRMS is the right solution to the right problems before making a BRMS investment.

Start small with a quick win pilot

Imagine if you could deploy working business rules in 9 weeks. With a quick win pilot, you start small, applying business rule management to a particular application. This pragmatic and incremental approach is designed to deliver faster ROI.

Talk to a live person

These specialists are available to assist you in your IBM ILOG BRMS solution identification and research. You can email or phone them directly.

Contact us

We will respond within 48 hours.

For general questions:

1-800-FOR-ILOG

ilogcc@us.ibm.com

© Copyright IBM Corporation 2009

IBM Software Group
Route 100
Somers, NY 10589
U.S.A.

Produced in the United States of America
August 2009
All Rights Reserved

IBM, the IBM logo, ibm.com and WebSphere are trademarks or registered trademarks of International Business Machines Corporation in the United States, other countries, or both. These and other IBM trademarked terms are marked on their first occurrence in this information with the appropriate symbol (® or ™), indicating US registered or common law trademarks owned by IBM at the time this information was published. Such trademarks may also be registered or common law trademarks in other countries. A current list of IBM trademarks is available on the Web at ibm.com/legal/copytrade.shtml.

Microsoft is a trademark of Microsoft Corporation in the United States, other countries, or both.

Java and all Java-based trademarks and logos are trademarks of Sun Microsystems, Inc. in the United States, other countries, or both.

Other company, product or service names may be trademarks or service marks of others.

References in this publication to IBM products or services do not imply that IBM intends to make them available in all countries in which IBM operates..