

IBM WebSphere Business Monitor, Version 6.0

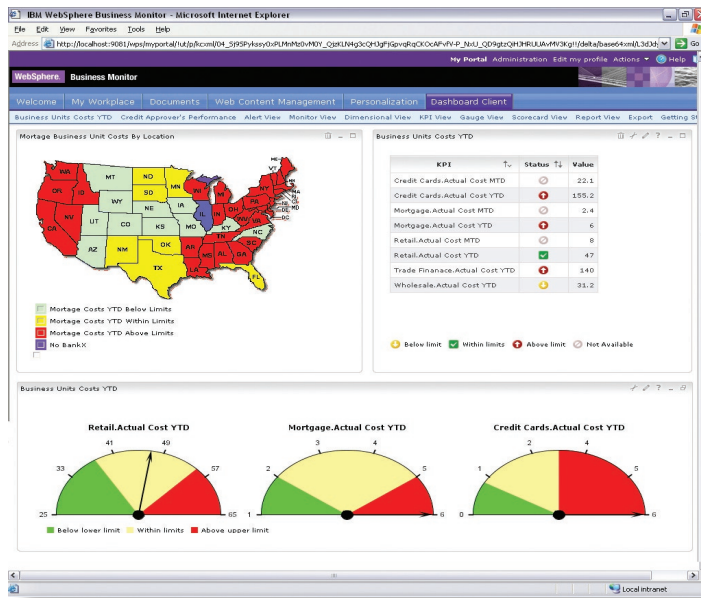
Highlights

- **Helps you track key performance indicators against the goals (developed using WebSphere Business Modeler Advanced) you choose to monitor**
- **Provides a more in-depth understanding of business processes so that you can optimize them to increase operating efficiencies**
- **Enables you to manage responses to unexpected business situations more effectively**
- **Enables you to perform multidimensional analyses based upon real-time data provided by WebSphere Business Monitor**
- **Includes business dashboards that enable you to visualize those areas that are critical for success**

In today's marketplace, the fight to gain competitive advantage is on a global scale. The companies that can't keep pace are those that don't fully understand their business processes, and aren't receiving any feedback on how those processes are performing. With real-time visibility into how their process are running, companies can track and modify business process flows to eliminate redundancies or inefficiencies, identify bottlenecks so that they can better balance workloads and reduce latencies.

Gain the insight you need to succeed

IBM WebSphere® Business Monitor, Version 6.0 software can provide the feedback and analysis you need to continually improve and optimize your business processes. You can monitor business processes in real time, using management dashboards and reporting capabilities that show you the information that's important to you, in the format that suits your needs.



WebSphere Business Monitor software provides real-time visibility into how your business is performing.

The product also provides alerts and notifications to key users that enable you to respond quickly before issues arise—often as performance data is received. WebSphere Business Monitor helps you establish and track common business-monitoring areas, such as:

- *Business performance measured against your target goals*
- *Business-critical situations requiring action*
- *Anomalous situations*
- *Business process flows*
- *Business process metrics like the duration a process has run or not run*

The ability to closely monitor key business performance metrics enables you to continuously drive improvement—and enhances your ability to innovate and optimize business processes.

Tight integration with software across the WebSphere portfolio

WebSphere Business Monitor enables you to monitor the run-time behavior of business processes through a Web application deployed on IBM WebSphere Process Server, Version 6.0. WebSphere Business Monitor receives and processes events in the Common Base Event (CBE) format, a standards-based format that is

included as part of WebSphere Process Server. WebSphere Business Monitor also uses the Common Event Infrastructure (CEI) support provided by WebSphere Process Server to send and receive events. And it uses WebSphere Process Server event-catalog and event-store capabilities to manage and keep records of the incoming event types, respectively.

WebSphere Business Monitor dashboard components integrate with WebSphere Portal to provide a predefined set of configurable views that are implemented using portlets. This out-of-the-box capability helps enable you to get started quickly and become productive faster. Dashboard views include:

- *A scorecard view that primarily supports executive users by grouping key performance indicators (KPIs) that are of interest to them*
- *A KPI view that shows the values of individual KPIs as compared against the limits you've defined*
- *A gauge view that displays individual KPI values, either relative to KPI lower- and upper-limit values, or relative to the KPI target value, visually emulating the appearance of instruments like the speedometer in an automobile*

- *A monitor view that shows the details of processes, either individually or in groups*
- *A report view that creates performance reports (usually including tables and graphs) relative to a time axis*
- *A dimensional view that provides granular details of information about how critical aspects of your business are performing*
- *An alert view that displays the notifications for a specific user*
- *A process view that displays graphical cues about process status*

WebSphere Business Monitor also includes one copy of IBM WebSphere Business Modeler Advanced software to provide sophisticated, intuitive modeling and simulation capabilities that enable you to precisely model the critical aspects of your business. When you use WebSphere Business Monitor in conjunction with WebSphere Business Modeler, you can create a business-measures model that specifically identifies activities you want to be monitored, including events, business metrics and KPIs. After the model is complete, WebSphere Business Monitor then recognizes the model and the measurements to be captured from incoming events. Then, you can model, assemble, deploy and manage these events to make informed and timely decisions—and use that information to help gain competitive advantage.

Monitor business processes across your organization

The data monitoring that WebSphere Business Monitor provides is based on a business-measures model that includes entries designed to permit correlation of run-time events with a specific instance, as well as entries designed to specify situations.

WebSphere Business Monitor obtains the business-measures model from the original business model by editing entries that are essential for monitoring purposes, including correlation of events, map calculations and detecting situations. You can edit the model using the business-measures editor.

The adaptive action manager receives situation information from the monitor server and takes appropriate actions for the given situation. These actions can be sending e-mail and dashboard alerts, instituting corrective action processes in the process server and invoking Web services.

The WebSphere Business Monitor information manager handles the multidimensional analysis capabilities and determines when and how information is replicated from the state and run-time databases to the historical data mart. The monitor server manages KPIs and metrics, along with other relevant information from the business-measures model that you define through WebSphere Business Modeler. The monitor server also provides event-correlation and situation-detection capabilities that trigger the adaptive action manager component.

WebSphere Business Monitor provides a range of data stores to manage the large amounts of information and analysis you need. These data stores include:

- *State, an internal (not user-accessible) persistent data store that supports event collection and processing*
- *Run-time, a data store that contains the information required to run process instances or in-progress events*
- *Performance warehouse, designed as a data mart that contains all of the historical information of completed process instances and enables multidimensional analysis*
- *Monitor repository, a data store that is accessed through the monitor server and dashboards that contain the definitions of the deployed models*

Delivering on the SOA promise

Business processes have life cycles that are driven by business goals and implemented by IT. As a result, you have to align IT processes that span your entire organization with your business goals. However, you might be dealing with an IT infrastructure that comprises a wide range of applications and technologies—each designed to address specific business and IT challenges. Service oriented architecture (SOA) and composite-application development enable you to solve this problem by using existing IT resources as services that you can rapidly assemble to create business-process flows.

The strength of an SOA depends on the extent to which it can help you use your existing IT infrastructure to meet your business objectives. An effective SOA should:

- *Take into account the complete life cycle of business processes to help ensure that IT aligns with the business.*
- *Render existing IT artifacts as consumable services.*
- *Manage services to enable efficiency and reuse.*

Together with IBM WebSphere Process Server, IBM WebSphere Integration Developer, IBM Rational® Application Developer and IBM WebSphere Business Monitor, WebSphere Business Modeler delivers a comprehensive SOA offering that completes the life cycle of business processes.



For more information

WebSphere Business Monitor, Version 6.0 delivers closed-loop business-process management by integrating business-process modeling, implementation and real-time monitoring. With WebSphere Business Monitor software, you can improve operating efficiencies by continuously improving business processes—and gain the knowledge you need to run your business optimally.

To learn more about IBM WebSphere Business Monitor, Version 6.0, contact your IBM representative or IBM Business Partner, or visit:

ibm.com/software/integration/wbimonitor

To join the Global WebSphere Community, visit:

www.websphere.org

© Copyright IBM Corporation 2005

IBM Corporation
Software Group
Route 100
Somers, NY 10589
U.S.A.

Produced in the United States of America
10-05
All Rights Reserved

AIX, IBM, the IBM logo, the On Demand Business logo, Rational and WebSphere are trademarks of International Business Machines Corporation in the United States, other countries or both.

Intel and Pentium are trademarks of Intel Corporation in the United States, other countries or both.

Microsoft and Windows are trademarks of Microsoft Corporation in the United States, other countries or both.

Other company, product and service names may be trademarks or service marks of others.

IBM WebSphere Business Monitor, Version 6.0 at a glance

System requirements

Any Intel® platform capable of running the supported levels of Microsoft® Windows® 2000, Windows 2003, IBM AIX®, Version 5.2 and AIX, Version 5.3

Software requirements

Operating environments (one of the following)

- Windows 2000 Server
- Windows 2000 Advanced Server
- Windows 2003 Standard
- Windows 2003 Enterprise
- AIX, Version 5.2
- AIX, Version 5.3

For the latest system and software requirements for WebSphere Business Monitor, Version 6.0, visit ibm.com/software/integration/wbimonitor/requirements/.



G224-7530-00