



WebSphere® software

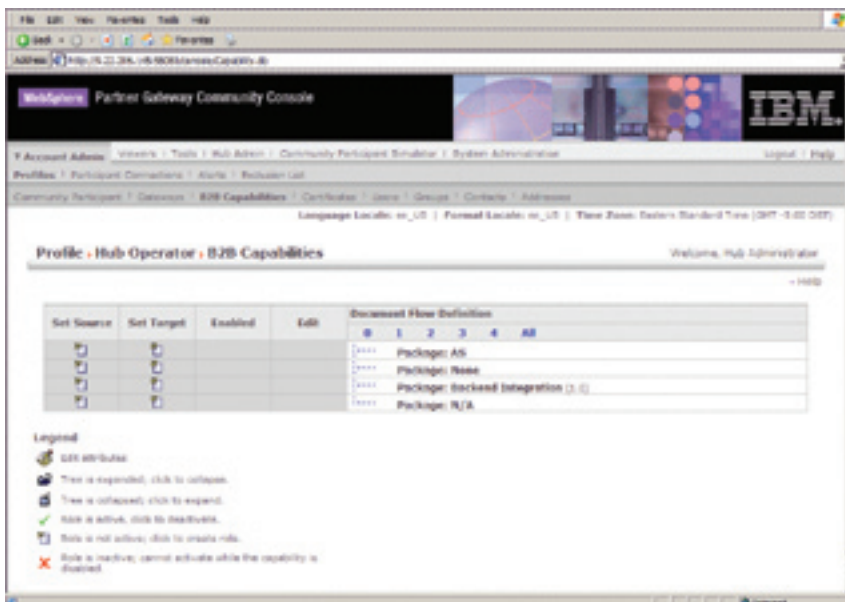
## IBM WebSphere Partner Gateway, Version 6.0

### Highlights

- **Provides native EDI support**
- **Supports FTP scripting to enable value-added network connectivity**
- **Delivers all of the capabilities of WebSphere Business Integration Connect, Version 4.2, including partner-community profile management**
- **Includes certified RosettaNet and AS2 support, as well as support for XML and Web services standards**
- **Offers improved usability and performance**
- **Allows you to install the product on WebSphere Application Server, Version 6.0**

In today's global business environment, the ability to rapidly establish and support a broad trading-partner community through rich, reliable and highly secure transactional connectivity is crucial to your organization's success. Because many of your business-to-business (B2B) processes, as well as your internal processes, rely on the efficiency of interactions with your trading-partner community, real-time visibility across your supply chain can help you quickly anticipate, identify and resolve problems. This visibility can help you increase demand-forecast accuracy and reduce inventory documentation errors. You can also help cut costs for internal and external supply chain processes, and improve cycle times.

IBM WebSphere® Partner Gateway, at the edge of your enterprise, can help you establish and maintain automated interoperability with your trading partners. Through its support for a broad range of industry data standards and transport protocols, WebSphere Partner Gateway software can help increase efficiency and reduce the cost of running your business processes—and extend intra-enterprise integration to interenterprise integration.



WebSphere Partner Gateway can help you quickly establish and maintain a diverse trading-partner community.

### **Reach a broader trading community**

WebSphere Partner Gateway, Version 6.0 software (formerly IBM WebSphere Business Integration Connect) extends process integration beyond the enterprise, providing a consolidated B2B gateway to help lower the costs of B2B integration. The product integrates external processes and partner communities with internal processes and infrastructures, combining extensive partner profile-management capabilities with a simple, reliable and security-rich exchange for B2B interoperability.

WebSphere Partner Gateway software enables you to build a single unified B2B partner-management environment that supports electronic data interchange (EDI) and XML-based transactions and transport protocols, such as Electronic Data Interchange-Internet Integration Working Group (EDIINT), Applicability Statement (AS) 1, AS2 and RosettaNet. Extending your enterprise with WebSphere Partner Gateway enables you to more easily achieve your On Demand Business goals: Your organization can become an enterprise whose business processes integrate end to end across the company and with key partners, suppliers and customers. As a result, your business can respond rapidly to changes in customer demand, market opportunity or external threats.

WebSphere Partner Gateway, Version 6.0 is available in three editions:

- *IBM WebSphere Partner Gateway - Express, a B2B gateway spoke to enable participants for communication over HTTP, HTTP Secure (HTTPS) and AS2, and a maximum of five external connections*
- *IBM WebSphere Partner Gateway Advanced Edition, a B2B gateway hub to integrate large trading-partner communities, licensed to a specific number of external connections*
- *IBM WebSphere Partner Gateway Enterprise Edition, a B2B gateway hub to integrate large trading-partner communities with an unlimited number of external connections*

### **Robust features and enhancements to address your requirements**

WebSphere Partner Gateway Advanced Edition, Version 6.0 and WebSphere Partner Gateway Enterprise Edition, Version 6.0 include a range of new features and enhancements.

#### *Native EDI standards support*

WebSphere Partner Gateway Advanced Edition, Version 6.0 and WebSphere Partner Gateway Enterprise Edition, Version 6.0 offer a unified, consolidated B2B gateway hub and partner-management environment for process integration. This functionality provides a single point of control for B2B community integration through support for XML-

based Internet standards and EDI standards. The extensive range of EDI standards supported by WebSphere Partner Gateway includes:

- *X12*
- *EDIFACT*
- *ODETTE*
- *UCS and WINS*
- *VICS*
- *RAIL*
- *EANCOM97*

You can download the latest set of standards by visiting [ibm.com/software/integration/wspartnergateway/support/](http://ibm.com/software/integration/wspartnergateway/support/).

#### *Support for processing EDI messages*

WebSphere Partner Gateway provides significant capabilities to process EDI messages, such as transformation, validation, functional acknowledgments, packaging, enveloping, de-enveloping and splitting. It automatically translates EDI format data, such as invoices, purchase orders and billing forms, for use with XML or structured application data formats. Data validation and standards compliance functions allow functional acknowledgments as defined by some EDI standards. You can also configure WebSphere Partner Gateway to construct and deconstruct envelopes of EDI format data packaged into batches of related items stored in a file.

### *Graphical EDI mapping tool*

WebSphere Partner Gateway includes a dedicated graphical drag-and-drop mapping tool, called *data interchange services*, that runs on the Microsoft® Windows® operating system. This tool delivers robust any-to-any mapping capabilities for EDI, XML and record-oriented data supporting both fixed-length fields and comma-separated values. WebSphere Partner Gateway also provides:

- *Extensive online help*
- *A large library of built-in functions for string handling, data manipulation, user-defined error situations and arithmetic operations*
- *The ability to combine maps using chain, switch and call functions*
- *Support for special EDI constructs like hierarchical loops (HL segment) to help reduce mapping efforts*
- *Extensive compliance checking against the published message definitions for all supported standards, on three configurable levels (full, partial or none)*
- *Support for most functional acknowledgments associated with supported standards including the 997, TAI and CONTRL messages*
- *Validation maps provided by IBM and IBM Business Partners to check compliance with published guidelines for selected industries and hubs, such as full Strategic National Implementation Process (SNIP) compliance checking for the U.S. Health Insurance Portability and Accountability Act (HIPAA) using validation maps and HIPAA code lists*

### *EDI message tracking*

Enhancements to WebSphere Partner Gateway EDI message tracking allows you to track messages through the system using a common repository. You can also view status and images of interchanges sent or received, and drill down to the individual documents within the interchanges to see their functional acknowledgment status.

### *Single point of control using the community console*

You can control all aspects of EDI transformation, validation and acknowledgement at the individual trading-partner level using the community console provided with WebSphere Partner Gateway.

### *FTP scripting to enable value-added network connectivity*

WebSphere Partner Gateway supports File Transfer Protocol (FTP) scripting to exchange B2B documents over an FTP service. You can control operations on the FTP server using a script file that contains the FTP commands to implement. And you can schedule invocations at intervals, or by date and time. FTP scripting support can enable access to value-added networks to support EDI. It can also support GET and PUT messages with a trading partner's FTP server, and supports a wide variety of standard FTP servers and gateways.

### *Certified RosettaNet support*

RosettaNet standards were developed to address the supply-chain needs of manufacturers, distributors, resellers, shippers and users in the computer and consumer electronics, electronic components, logistics, semiconductor manufacturing and telecommunications industries. To learn more about RosettaNet standards, visit [www.rosettanel.org](http://www.rosettanel.org). WebSphere Partner Gateway, Version 6.0 provides certified support for RosettaNet Implementation Framework (RNIF).

### *Certified AS2 support*

WebSphere Partner Gateway provides certified support for AS2, enabling transaction integrity, privacy and nonrepudiation for B2B transactions and EDI over the Internet. The AS2 specification was developed as part of the Internet Engineering Task Force (IETF) EDIINT. AS2 provides security for the transport payload through digital signatures and data encryption to help ensure reliable, nonrepudiable delivery through the use of receipts. To learn more about AS2, visit [www.ebusinessready.org/as2.html](http://www.ebusinessready.org/as2.html).

*Optional installation on WebSphere Application Server, Version 6.0*

WebSphere Partner Gateway Advanced Edition, Version 6.0 and WebSphere Partner Gateway Enterprise Edition, Version 6.0 include embedded versions of IBM WebSphere Application Server - Express, Version 6.0. If your organization is licensed to use WebSphere Application Server, Version 6.0 or WebSphere Application Server - Express, Version 6.0, you can optionally install WebSphere Partner Gateway, Version 6.0 on an existing WebSphere Application Server, Version 6.0 installation.

**Maintaining the leading-edge capabilities of WebSphere Business Integration Connect, Version 4.2**

WebSphere Partner Gateway, Version 6.0 carries forward the technology and all of the capabilities of IBM WebSphere Business Integration Connect, Version 4.2. These capabilities include:

- *A centralized B2B management environment to consolidate the integration of trading-partner communities using a variety of B2B standards.*
- *A central repository for partner profiles, connections and protocols.*

- *Centralized operational tools with integrated event and alert management to support the logging of B2B transaction delivery, event viewing and document viewing. These capabilities help you to meet critical processing windows, view alerts about process failures or processes that might not be completed on time, and view information about active and completed B2B processes.*
- *A browser-based, community console that supports participants, managers and operators with user access to the hierarchical information stored in a central repository, depending on their respective authorizations. You can trigger alerts (to the console) and e-mail notifications (to a person in charge) or generate system-management notifications (for example, for IBM Tivoli® software), based on predefined rules, to handle exceptions.*
- *High scalability for large trading communities. The WebSphere Partner Gateway component-based architecture is entirely based on open standards while taking advantage of robust IBM middleware such as WebSphere Application Server, IBM WebSphere MQ and IBM DB2® Universal Database™ software. Limited-use licenses for WebSphere MQ and DB2 Universal Database are included for use as an integral part of WebSphere Partner Gateway Advanced Edition and WebSphere Partner Gateway Enterprise Edition.*
- *Security at the edge of the enterprise, such as support for Secure Sockets Layer (SSL), encryption, decryption, public-key cryptography and certificate validation, as well as for nonrepudiation as required for full AS2 compliance.*
- *Security-rich communications supporting a variety of B2B protocols and standards, such as HTTPS, Simple Mail Transfer Protocol (SMTP), Secure FTP (FTPS), XML, Simple Object Access Protocol (SOAP), AS1, AS2, RosettaNet PIPs for RNIF, Version 1.1 and RNIF, Version 2.0, and Commerce XML (cXML).*
- *An extensible and flexible framework to provide plug-in support for other protocols and standards. Exits provide an excellent way for trading partners, services and sophisticated users to extend WebSphere Partner Gateway capabilities seamlessly while retaining its operational advantages.*

**For more information**

To learn more about IBM WebSphere Partner Gateway, Version 6.0, contact your IBM representative or IBM Business Partner, or visit:

[ibm.com/software/integration/wspartnergateway/](http://ibm.com/software/integration/wspartnergateway/)

To join the Global WebSphere Community, visit:

[www.websphere.org](http://www.websphere.org)

---

## IBM WebSphere Partner Gateway, Version 6.0 at a glance

---

### Hardware requirements

---

#### *For WebSphere Partner Gateway - Express, Version 6.0*

##### *Linux® operating environment*

- Processor: Intel® Pentium® at 500MHz or faster
- Main memory: 512MB minimum
- Hard disk: 225MB minimum

##### *Windows operating environment*

- Processor: Intel Pentium at 500MHz or faster
- Main memory: 512MB minimum
- Hard disk: 200MB minimum

##### *IBM i5/OS™ and IBM OS/400® operating environments*

- A system capable of running OS/400, Version 5.2.0 or i5/OS, Version 5.3.0, with a minimum commercial processing workload (CPW) rating of 300
- Main memory: 750MB minimum
- Hard disk: 150MB minimum

---

#### *For WebSphere Partner Gateway Advanced Edition, Version 6.0 and WebSphere Partner Gateway Enterprise Edition, Version 6.0*

##### *Linux operating environment*

- Processor: Intel Pentium at 2GHz or faster
- Main memory: 2GB minimum
- Hard disk: 300MB minimum

##### *Windows operating environment*

- Processor: Intel Pentium at 2GHz or faster
- Main memory: 2GB minimum
- Hard disk: 300MB minimum

##### *IBM AIX® operating environment*

- Processor: IBM @server® pSeries® machine at 600MHz or faster
- Main memory: 2GB minimum
- Hard disk: 300MB minimum

##### *Sun Solaris operating environment*

- Processor: Sun SPARC system at 750MHz
- Main memory: 2GB minimum
- Hard disk: 300MB minimum

---

##### *Notes:*

- 1. Actual hardware requirements for your system might be greater, depending on the complexity of your specific environment, throughput and data-object size.*
  - 2. Multiserver installations require shared network-attached storage (NAS).*
  - 3. Additional servers might be needed for added capacity and redundancy.*
  - 4. Additional hard disk capacity might be needed for document storage.*
-

---

## **IBM WebSphere Partner Gateway, Version 6.0 at a glance (continued)**

---

### **Software requirements**

---

*For WebSphere Partner Gateway - Express, Version 6.0*

*Linux operating environment*

- Operating systems (one of the following)
  - Red Hat Enterprise Linux (RHEL) Advanced Server, Version 3.0 with Update 3
  - SUSE LINUX Enterprise Server (SLES), Version 8 with Service Pack (SP) 3
  - SLES, Version 9
- Application server: embedded version of WebSphere Application Server - Express, Version 6.0 (included in the product)

*Windows operating environment*

- Operating systems (one of the following)
  - Windows 2000 Server with SP4
  - Windows 2000 Advanced Server with SP 4
  - Windows Server 2003 Standard
  - Windows Server 2003 Enterprise
- Application server: embedded version of WebSphere Application Server - Express, Version 6.0 (included in the product)

*i5/OS and OS/400 operating environments*

- Operating systems (one of the following)
    - OS/400, Version 5.2.0
    - i5/OS, Version 5.3.0
  - QShell Interpreter (Option 30)
  - IBM Java™ Developer Kit, Version 1.4 (Option 6)
  - IBM Toolbox for Java
  - If using SSL and OS/400, Version 5.2.0, Crypto Access Provider 128-bit for AS/400®
  - Application server: WebSphere Application Server - Express, Version 6.0.1 for OS/400 and i5/OS (license-restricted version provided with the product)
-

---

## IBM WebSphere Partner Gateway, Version 6.0 at a glance (continued)

---

### Software requirements (continued)

---

*For WebSphere Partner Gateway Advanced Edition, Version 6.0 and WebSphere Partner Gateway Enterprise Edition, Version 6.0*

#### *Linux operating environment*

- Operating systems (one of the following)
  - RHEL, Version 3.0 with Update 3
  - SLES, Version 8 with SP3
  - SLES, Version 9

#### *Windows operating environment*

- Operating systems (one of the following)
  - Windows 2000 Server with SP4
  - Windows 2000 Advanced Server with SP4
  - Windows Server 2003 Standard
  - Windows Server 2003 Enterprise

#### *AIX operating environment*

- Operating systems (one of the following)
  - IBM AIX 5L™, Version 5.2 with recommended maintenance package 5200-03
  - AIX 5L, Version 5.3

#### *Sun Solaris operating environment*

- Operating system: Sun Solaris operating environment, Version 9 with the recommended patch cluster of June 2004
- 

*Additional software requirements for WebSphere Partner Gateway Advanced Edition, Version 6.0 and WebSphere Partner Gateway Enterprise Edition, Version 6.0*

- Application server (one of the following)
    - Embedded version of WebSphere Application Server - Express, Version 6.0 (included in the product)
    - WebSphere Application Server - Express, Version 6.0
    - WebSphere Application Server, Version 6.0 (optional)
  - Web browser for console access (one of the following)
    - Microsoft Internet Explorer, Version 6.0 with SP1 or later
    - Mozilla, Version 1.4 or Version 1.7
  - An SMTP-based e-mail relay server for e-mail alert delivery and SMTP message delivery
  - Databases (one of the following)
    - DB2 Universal Database Enterprise Server Edition, Version 8.2 (included with terms and conditions limitations for embedded use only)
    - Oracle Enterprise Edition 9i, Release 2 (9.2.0.4)
    - Oracle Enterprise Edition 10g, Release 1 (10.1.0.3)
  - Messaging: WebSphere MQ, Version 5.3 with Fix Pack (FP) CSD 08 or later (included with terms and conditions limitations for embedded use only) and with publish and subscribe IBM SupportPac™ MA0C
-



© Copyright IBM Corporation 2005

IBM Corporation  
Software Group  
Route 100  
Somers, NY 10589  
U.S.A.

Produced in the United States of America  
12-05  
All Rights Reserved

AIX, AIX 5L, AS/400, DB2, DB2 Universal Database, @server, i5/OS, IBM, the IBM logo, the On Demand Business logo, OS/400, pSeries, SupportPac, Tivoli and WebSphere are trademarks of International Business Machines Corporation in the United States, other countries or both.

Intel and Pentium are trademarks of Intel Corporation in the United States, other countries or both.

Microsoft and Windows are trademarks of Microsoft Corporation in the United States, other countries or both.

Java and all Java-based trademarks are trademarks of Sun Microsystems, Inc. in the United States, other countries or both.

Linux is a trademark of Linus Torvalds in the United States, other countries or both.

Other company, product and service names may be trademarks or service marks of others.

This publication provides addresses to non-IBM Web sites. IBM is not responsible for the content on such sites.