



**Tivoli** software

# IBM Tivoli Continuous Data Protection for Files

## Highlights

### Provides invisible, real-time file replication

- When a file is saved:
  - A copy is stored on local disk
  - Another copy can be sent to a file server of Network Attached Storage (NAS)
  - Another copy can be sent to an IBM Tivoli Storage Manager server
- Provides small foot print
- Installs and configures in minutes
- Requires no server component
- Operates in the background — no user intervention required
- Tolerates transient networks
- Provides versioning of files for point-in-time recovery
- Interoperates with third-party traditional backup solutions

### File vault

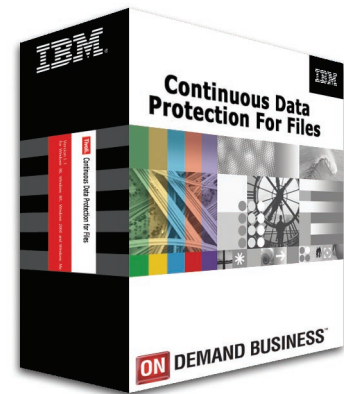
- Retains files for predefined lengths of time
- Allows easy configuration — zero user interface
- Provides write protection — once a file is vaulted it cannot be modified or deleted until the specified time

### Continuous protection, because once a day is not enough

Businesses today are increasingly concerned with protecting their data. Losing key business information can hamper productivity, delay projects, and divert resources and calls to the help desk. It can also harm organizations when they face regulatory scrutiny. In fact, many businesses today are legally required to use formal data protection.

Data corruption is an increasing concern, and companies need better recovery point capabilities. Often the most valuable files are those users are working on currently, and being able to roll back to a point in time. In addition, companies need sophisticated policy-based data management that enables them to focus on data with the most business value.

Although most companies have implemented solutions for protecting enterprise data, data residing on workstations and laptops is often under protected — even though it amounts to 60 percent of all corporate data, according to some industry experts. This is particularly true where lost data can significantly impact productivity and viability.



### **Protect key corporate information**

The newest phase in the evolution of file backup is Continuous Data Protection, and that's where IBM Tivoli® Continuous Data Protection for Files comes in. It is a real-time, continuous data protection solution specifically designed for file servers and user end points. Instead of waiting for a scheduled interval, Tivoli Continuous Data Protection for Files backs up your most important files the moment they are saved, in real time. What's more, it does this effortlessly and transparently, eliminating any backup window.

With Tivoli Continuous Data Protection for Files, you can specify as many as three target backup/replication areas for high-priority files: a local disk, a file server or NAS appliance, and a Tivoli Storage Manager server. These areas can capture file changes when they occur to help protect against corruption, file loss, system loss or a common accidental deletion.

Tivoli Continuous Data Protection for Files versions copies of the files to local self-managed cache, deleting old versions to make room for new versions. In addition, it enables you to specify a remote file server or Tivoli

Storage Manager for off-machine protection when a user is connected, so real-time backups still occur. Tivoli Storage Manager provides off-site copies of backup data for vaulting, auditable disaster recovery plan, and tape and media management.

### **Help minimize recovery times and maximize the granularity of recoverable data**

With Tivoli Continuous Data Protection for Files, you can help optimize recovery times for file servers and user end points. Typically a file server is backed up once a night, and the degree of difference between the recoverable data and the latest version of the file can be significant if many changes are made between backups. This degree of difference is known as the recovery point objective (RPO).

An option for protecting a file is to have Tivoli Continuous Data Protection for Files replicate changes to files. This meets the definition of continuous data protection established by the Storage Networking Industry Association (SNIA). When a file is modified, Tivoli Continuous Data Protection for Files can replicate to disk or tape (local or remote), according to the policy you set and how the solution is deployed.

Users can easily restore the version(s) of the file they need, helping to minimize recovery times.

### **Fit your environment without burdening your administrators**

You can use Tivoli Continuous Data Protection for Files in a variety of environments, including remote offices, enterprise desktops and file servers. It is ideal for professionals who have critical files on their system that need protection continuously. It not only helps minimize data loss, it can also help drive productivity.

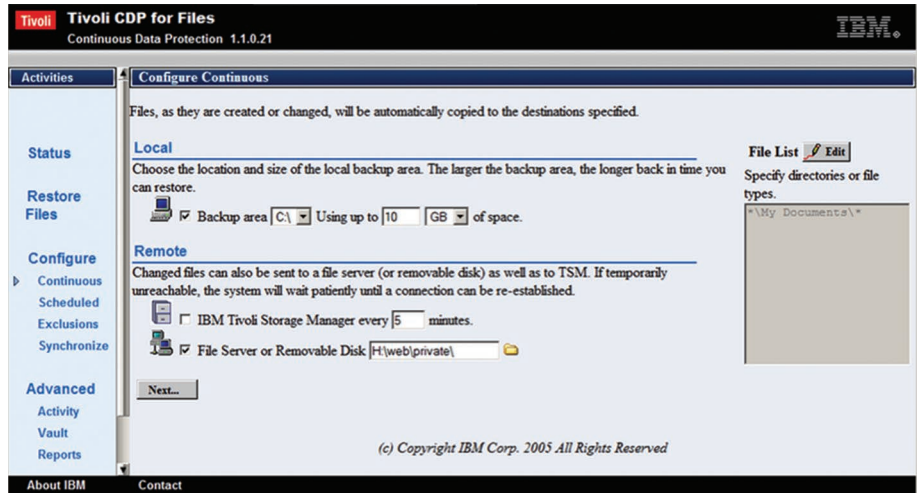
You'll also find that Tivoli Continuous Data Protection for Files is easy to configure and deploy. The solution allows for silent installation/configuration and basic push capabilities. Updated versions of Tivoli Continuous Data Protection for Files or centralized configurations and policies can also be automatically updated from a central location.

What's more, users can take advantage of the software's vault features to secure files — without administrator intervention. They simply create folders and define a length of time for file retention. Then they drag-and-drop, copy or save

“Continuous Data Protection (CDP) represents a major breakthrough in data protection. Historically, data protection solutions have focused on the periodic backup of data. Complex issues like backup windows, protection of open files and databases, and heavy impact to production systems during the backup operation have all arisen from this scheduled backup paradigm. Today, CDP dramatically changes the data protection focus from backup to recovery. With CDP continuously safeguarding all changes to your important data, the IT administrator need never think about backup again, it just works. And when disaster strikes, CDP-based solutions offer the utmost in flexibility and performance by allowing for the rapid recovery to any desired point in the past.

CDP offers more flexible Recovery Point Objectives (RPO) and faster Recovery Time Objectives (RTO) than traditional data protection solutions, which were designed to create, manage and store single-point-in-time (SPIT) copies of data. CDP, on the other hand, captures and protects all data changes, not just at select, pre-determined points. This provides access to data at any point in time (APIT), thereby reducing data loss and eliminating costly downtime. Data retrieval is reliable, fast, and granular.”

— *CDP Buyer's Guide*,  
Storage Networking Industry  
Association (SNIA), © June 2005



Configure Continuous Data Protection for local, files server and Tivoli Storage Manager real-time protection.

files to the appropriate defined folder. Those files cannot be deleted or altered for the defined time period.

In summary, Tivoli Continuous Data Protection for Files can help you:

- Optimize backup resource utilization by reducing or eliminating backup times.
- Optimize RPO by providing real-time backups — so when a failure occurs, recovery can restore the latest version — and by reducing loss of productivity due to data loss.
- Improve Recovery Time Objective (RTO) by enabling fast recovery from disk — local or remote.
- Improve IT staff productivity, allowing end users to easily recover data without IT involvement.

### For more information

To learn more about how Tivoli Continuous Data Protection for Files can enable you to protect important corporate data, call your IBM representative or IBM Business Partner, or visit [ibm.com/software/tivoli/solutions/storage](http://ibm.com/software/tivoli/solutions/storage)

### About Tivoli software from IBM

Tivoli software from IBM helps organizations efficiently and effectively manage information technology (IT) resources, tasks and processes in order to meet ever-shifting business requirements and deliver flexible and responsive IT service management, while reducing costs. The Tivoli portfolio spans software for security, compliance, storage, performance, availability, configuration, operations and IT lifecycle management, and is backed by world-class IBM services, support and research.



## System requirements

### **Hardware requirements:**

- A 32-bit Intel® Pentium® or compatible processor, or multiprocessor computer
- 256MB RAM
- 100MB disk space

### **Software requirements:**

- Microsoft® Windows® XP (any edition)
- Windows 2003 (any edition)
- Windows 2000 (any edition)

**Note:** The Tivoli Storage Manager backup option requires the Tivoli Storage Manager Backup/Archive (B/A) client to be installed on the same system.

## Browser requirements

- Internet Explorer, Version 5.0 and up (recommended)
- Firefox/Mozilla

© Copyright IBM Corporation 2005

IBM Corporation  
Software Group  
Route 100  
Somers, NY 10589  
U.S.A.

Produced in the United States of America  
10-05  
All Rights Reserved

IBM, the IBM logo, the On Demand Business logo and Tivoli are trademarks of International Business Machines Corporation in the United States, other countries or both.

Intel is a registered trademark of Intel Corporation or its subsidiaries in the United States and other countries.

Microsoft and Windows are trademarks of Microsoft Corporation in the United States, other countries or both.

Other company, product and service names may be trademarks or service marks of others.