



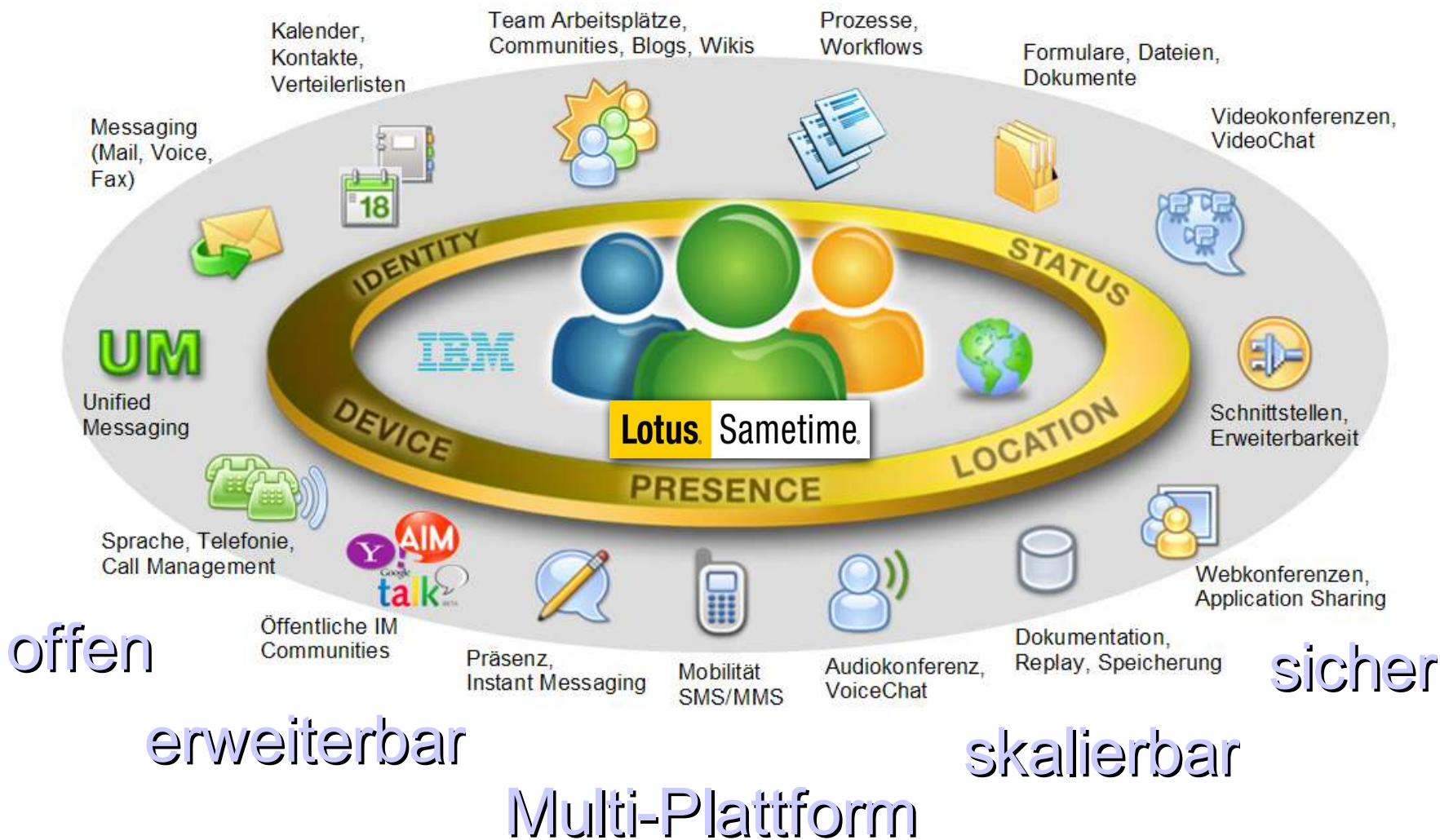
IBM Software Partner Academy Program

Telefonkonferenz am 11.09.2009

**Unified Communications & Collaboration
– Sametime 8.5**

**Lars Thielker
SWG Technical Sales Lotus, Channel**

Sametime als Kommunikationsplattform



IBM Lotus Sametime 8.5 Strategie



Modernisierte Sametime Online Meeting Plattform



Neuer Sametime Web Client und mobile IM Clients



Vereinfachte Integration von Geschäftsprozessen & -anwendungen

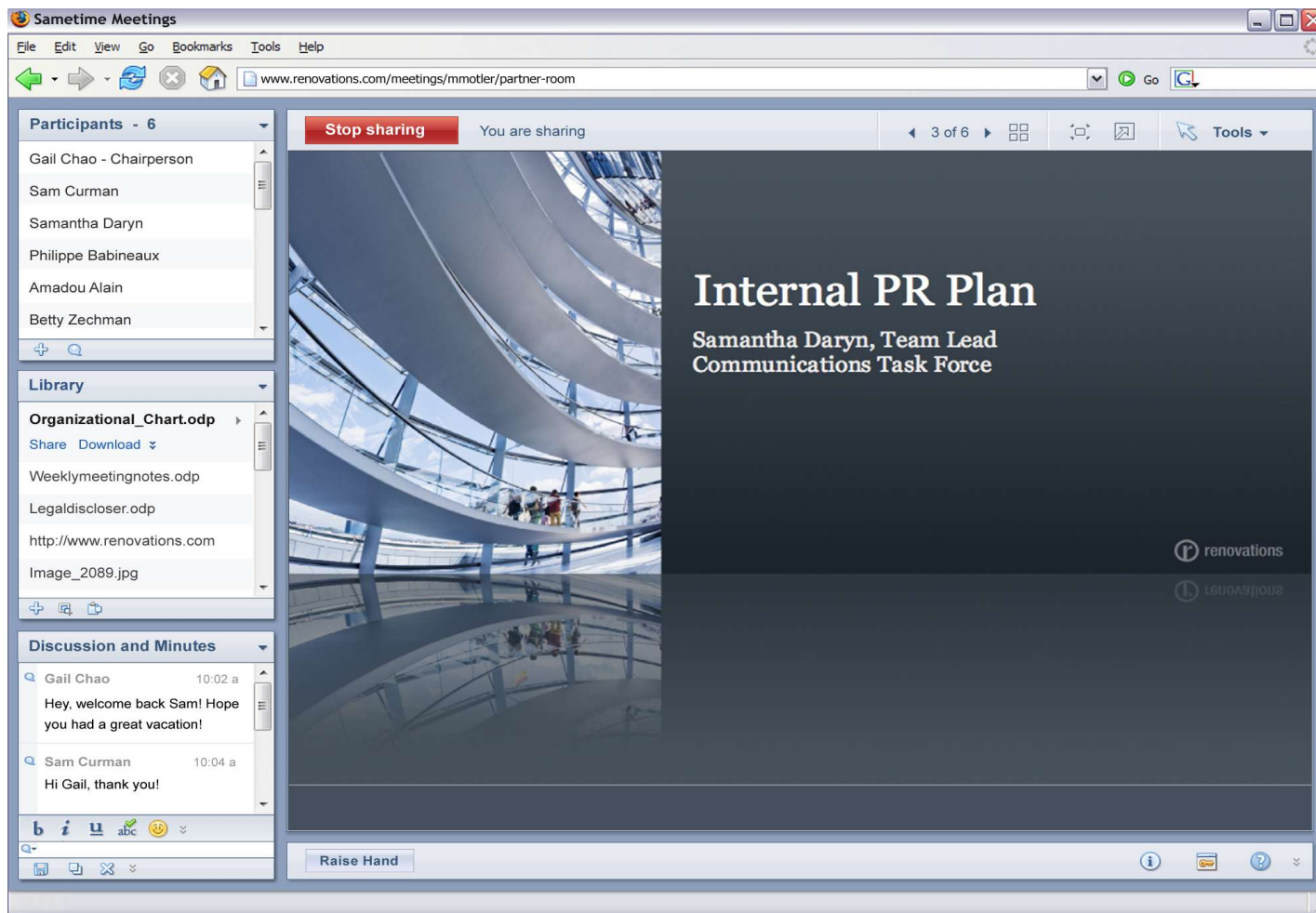


Verbesserte Videoqualität und Interoperabilität

Lotus Sametime 8.5 Highlights

- Modernisierte Unified Online Meeting Oberfläche
 - Einfacher Zugriff
 - Persistentes Modell
 - Ermöglicht Meetings aus dem Rich Client
- Verbesserte Videoqualität und Interoperabilität
- Neuer Web Browser Client nutzt Web 2.0 Technologien (ohne Java™ Downloads)
- Ausbau der Plattform für CEBP
 - Erweiterung der UC Services für den einfachen Zugriff aus anderen Anwendungen
 - Nutzung von Web 2.0 Technologien zur Integration in Geschäftsanwendungen
 - Ersatz für Programmierschnittstelle ST Links
- iPhone Support & Erweitertes Plug-In Modell für Sametime Mobile Client
- Zentrale Administration und Management der Sametime Dienste

Lotus Sametime 8.5



IBM Lotus Sametime 8.5 Meetings – Web Browser Client

Änderungen vorbehalten

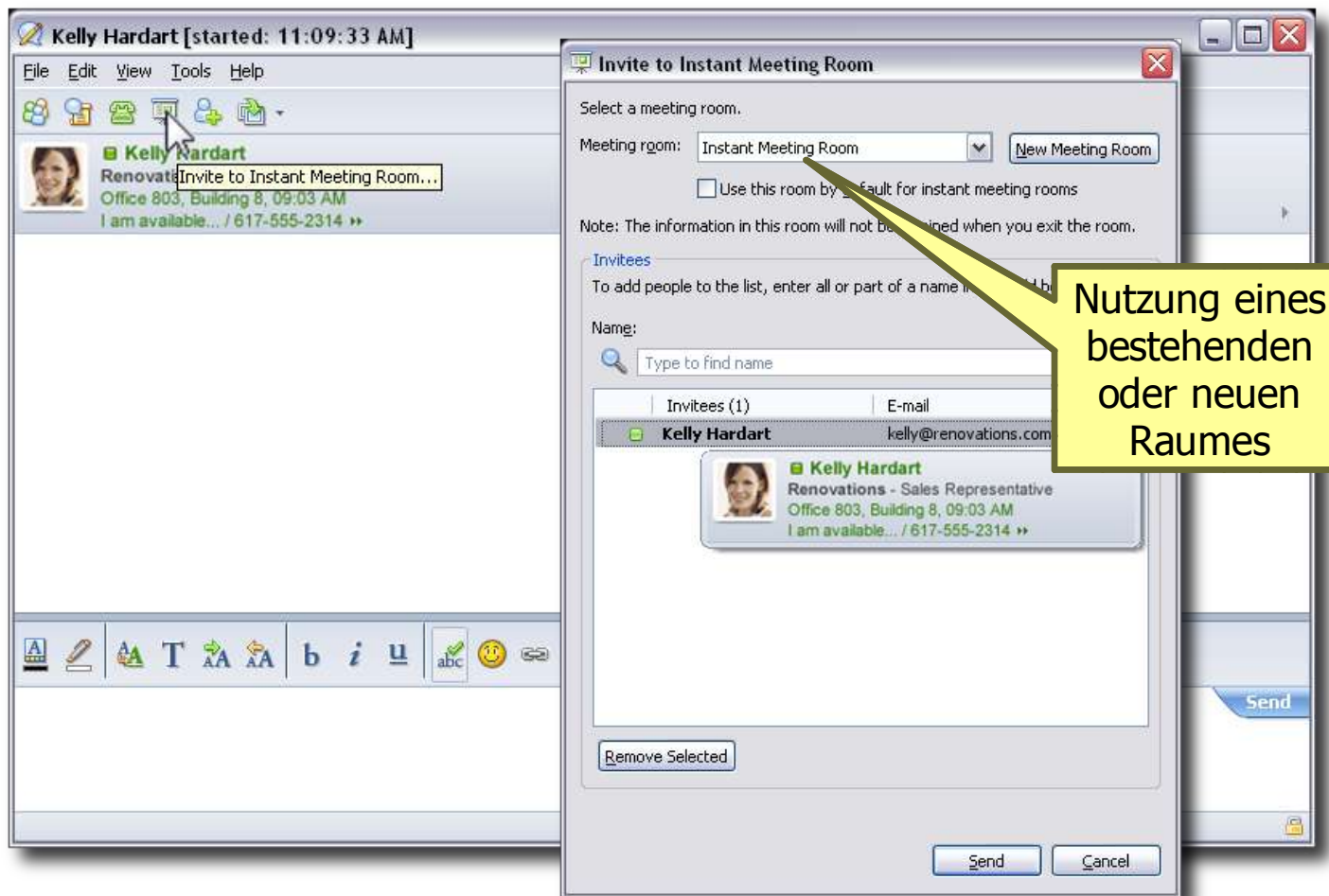
Lotus Sametime 8.5



IBM Lotus Sametime 8.5 Meetings – Eclipsebasierter Rich Client

Änderungen vorbehalten

Eröffnen eines Sametime 8.5 Instant Meetings



Verwalten von Sametime 8.5 Meeting-Räumen

The screenshot displays the IBM Lotus Sametime 8.5 Meetings Plugin interface. On the left, a window titled 'Samantha Daryn - Inbox - IBM Lotus Notes' shows an email list with columns for Sender, Subject, Date, and Size. The main area shows the 'Sametime Meetings' window with a search bar and two views: 'Renata's Meeting Rooms' and 'Today's Meetings'.

Renata's Meeting Rooms View:

- Marketing Team ...
Last accessed: August 29, 2008 | 4 current participants
Join Room | More Actions
- [Calendar] Talk about upcoming marketing plans
Last accessed: July 14, 2008 | 3 current participants
- Renata's work room
Last accessed: July 2, 2008 | 15 current participants
- [Calendar] Set priorities for 2009
Last accessed: (never) | 0 current participants

Today's Meetings View:

- 10:00a Talk about updating sales meeting
Chair: Renata Washington
Create Online Meeting | More Actions
- 11:00a Marketing team weekly
Chair: Mike Motler
- 1:00p Financial report-out
Chair: Renata Washington
- 2:30p Talk with Graphics team
Chair: Amadou Alain

Tomorrow's Meetings View:

- 9:00a 1-on-1 with Samantha
Chair: Mike Motler

Erstellen, Beitreten,
Einladen oder Suchen von
Meeting-Räumen

Das Plugin bietet unterschiedliche
Ansichten der Meeting-Räume und
Meeting-Einträge im Kalender.

Ihre eigenen, die zuletzt genutzten
Räume oder Räume anderer Personen
aus der Sametime Kontaktliste werden
angezeigt.

IBM Lotus Sametime 8.5 Meetings Plugin für Lotus Sametime und Lotus Notes

Änderungen vorbehalten

Verwalten von Sametime 8.5 Meeting-Räumen

The screenshot shows the Lotus Sametime 8.5 Meeting Room Center interface. At the top, there is a search bar with the text "Enter keywords" and a "Search" button. Below the search bar is a "Welcome to Meeting Rooms" banner with a "Learn more" and "Watch demo" button. The main content area is titled "My Meeting Rooms" and includes a "New Meeting Room" button. A table lists meeting rooms with columns for "Room Name", "Chair", "Active" (with a dropdown arrow), and "Last Accessed". The table contains three rows: "Design Team Room", "Customer Education Webinar - Education Series", and "Sales Room". Below the table are pagination controls and a footer with navigation links.

Annotations on the screenshot include:

- A yellow callout box pointing to the search bar: "Suchen nach Meeting-Räumen anderer Personen".
- A yellow callout box pointing to the "My Meeting Rooms" section: "Anzeige der eigenen und verwalteten Meeting-Räume".
- Red arrows pointing to the "Active" column header: "default sort order active users in room".
- Red arrows pointing to the "Last Accessed" column header: "Secondary sort order".
- Red arrows pointing to the "More actions" link for the "Design Team Room": "Opens details page".
- Red arrows pointing to the "More actions" link for the "Sales Room": "Edit Delete Hide (or 'Make Visible' if room is hidden)".

IBM Lotus Sametime 8.5 Meetings – Browserbasierte Verwaltung

Änderungen vorbehalten

Lotus Sametime 8.5 Audio & Video

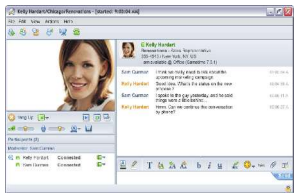
- Einheitlich
 - Einheitliche Desktop-Video
 - Oberfläche für Chat und Online Meetings
- Offen
 - Interoperabilität mit Audio- /
 - Video Lösungen von Business Partnern
- Kontrolliert
 - Verbessertes Umgang mit Firewalls
 - Bandbreitenmanagement



Änderungen vorbehalten

Lotus Sametime 8.5 Audio & Video

Sametime Video Chat



Sametime Services



H.263
H.264
iSAC
G.711
G.722.1

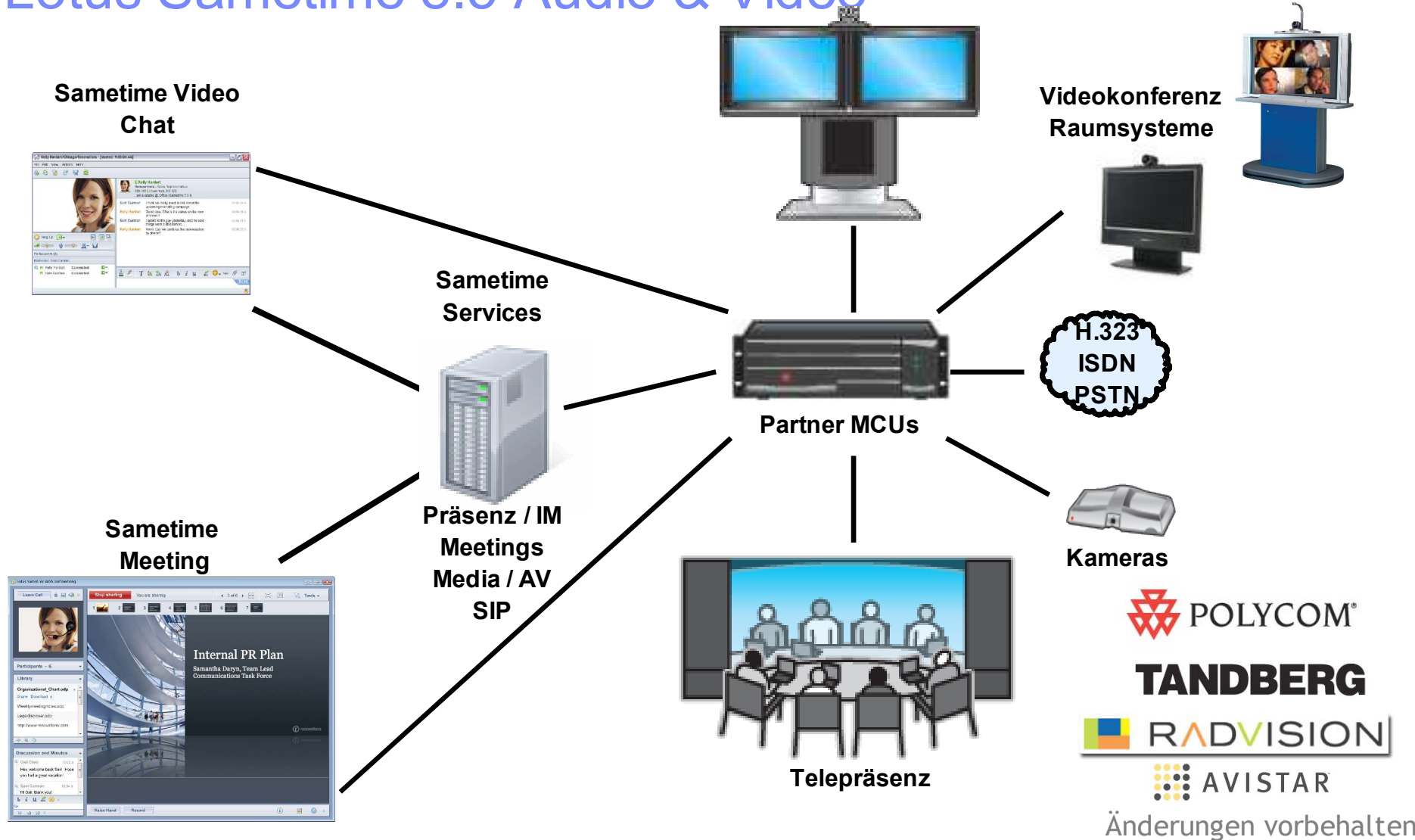
Sametime Meeting



Präsenz / IM
Meetings
Audio / Video

Änderungen vorbehalten

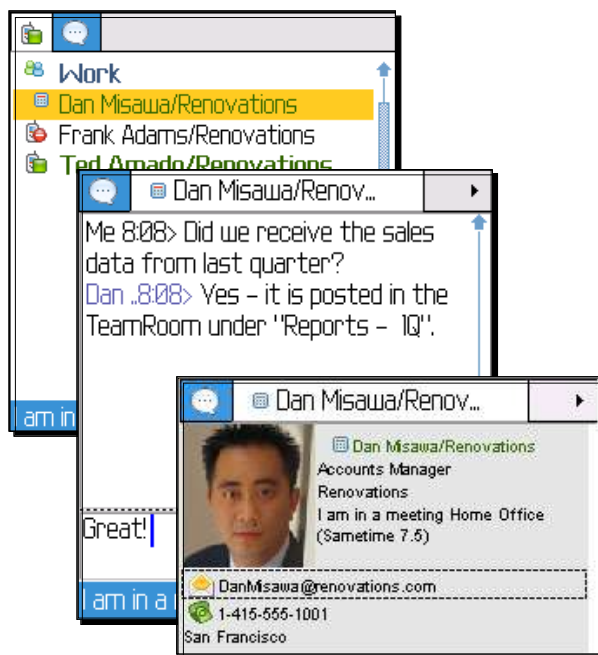
Lotus Sametime 8.5 Audio & Video



Änderungen vorbehalten

IBM Lotus Sametime Mobile Client – Stand Heute

- Blackberry
- Windows Mobile
- Nokia & Sony Ericsson (Symbian)
- Business partner mobile clients from RIM and WebMessenger



Lotus Sametime 8.5 Mobile – iPhone Client

- Browserbasierter Sametime Mobile Client für sicheres Instant Messaging, Präsenzanzeige & Chat



Änderungen vorbehalten

IBM Lotus Sametime 8.5 Mobile – UCC Client

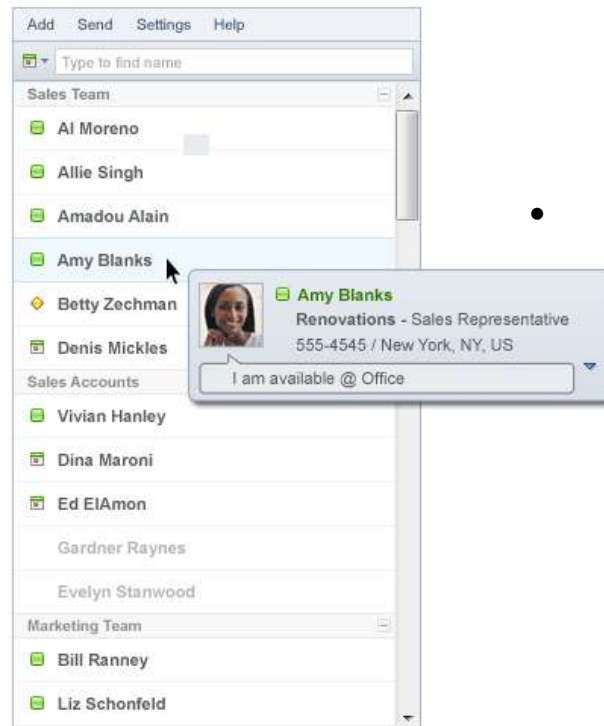
- Neue erweiterbare Sametime Mobile Plattform
- Erweiterbar durch Drittanbieter Plug-Ins (Expeditor-basierter Client)
- Unterstützung für Windows Mobile 6.1 and 6.0 Endgeräte
- Unterstützung für weitere Plattformen ist geplant – z.B. Nokia S60



Änderungen vorbehalten

Lotus Sametime 8.5 Connect Client

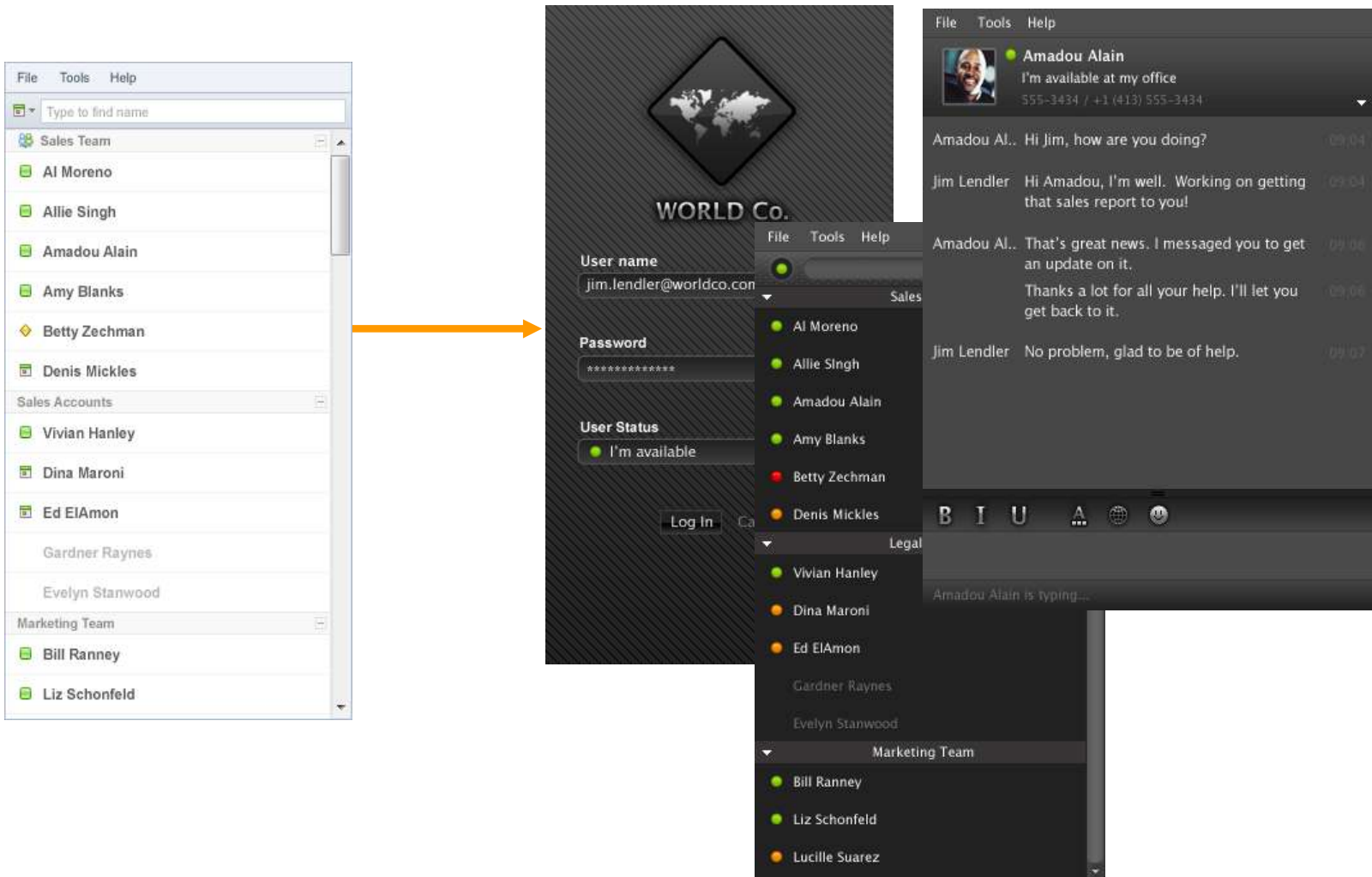
- IBM Lotus Sametime Connect 8.5 Client (Rich Client)
 - Neue Ansichtsmöglichkeiten in der Kontaktliste
- Browser-basierter Instant Messaging Client (Thin Client)
- Ideal für Browser Verteilungsstrategien



- Sichere Alternative zu öffentlichen IM, z.B. für ein Partner-Extranet
- Features
 - Kein Herunterladen von Anwendungen
 - AJAX basierter Client (keine JRE notwendig)
 - Teilfunktionen vom Rich Client
 - Zugriff über den Sametime Web Proxy Server

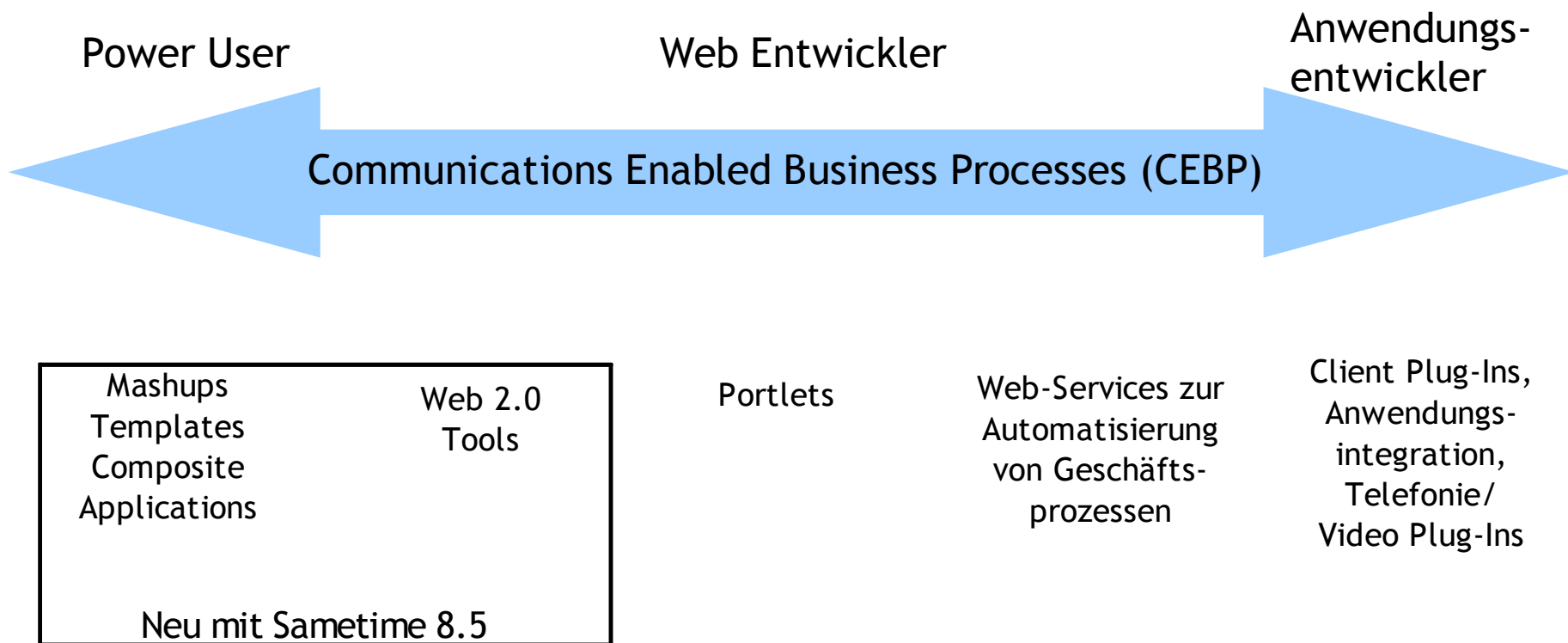
Änderungen vorbehalten

Grafische Anpassungen des Sametime 8.5 Web



Änderungen vorbehalten

Lotus Sametime 8.5 – Anpassbarkeit



Lotus Sametime 8.5 in Web 2.0 Anwendungen

File Tools Help

Betty Zechman
I am available at home
555-3434 / +1 (413) 555-3434

Betty Zech... Hi Jim, how are you doing? 09:04

Jim Lendler Hi Betty, I'm well. Working on getting that sales report to you! 09:04

Betty Zech... That's great news. I had messaged you to get an update on it. 09:06

Thanks a lot for all your help on it. I'll let you get back to it. 09:06

Jim Lendler No problem, glad to be of help. 09:07

Betty Zechman is typing...

OPEN FINANCIAL NETWORK Home | WholeSale Banking | Home | More... Frank Adams | Edit my Profile | Help | Log Out

Home Blogs New Page Add Content Change Theme Share Page

News

New Market Trends for 2009
Nov 18 | Sam Orme

Working with Teams
Nov 16

Market Research
Nov 14

Company Benefits Update
Nov 14

Cost Analysis - Renovations Green
Nov 12

Best Finance Software 2008
Nov 12

Subscriptions Updates

Blogs [See more](#)

Renovations Finance Plan
Sam Curman | Jan 04, 2009
[Details](#)

Global Finance
Gail Chao | Jan 10, 2009
[Details](#)

IT for Finance Teams
Gail Chao | Jan 10, 2009
[Details](#)

Team Places Updates

Marketing Collateral
Brochure.pdf - Amadou Alain
Jan 04, 2009 | [Details](#)

Renovations Finance Team
Brochure.pdf - Amadou Alain
Jan 04, 2009 | [Details](#)

Mail

Sort By Date

- ★ **Sam Curman** Renovations Financial Planning 01/17/09 4:45 PM
- ★ **Gail Chao** Re: Renovations Financial Planning 01/17/09 4:45 PM
- ★ **Gail Chao** Cost analysis 01/17/09 4:45 PM
- Glenn Cloud Here are the estimates for the OFN brochures 01/17/09 4:45 PM

My Objectives

Performance Update

Reduce Costs 0% 45% 60% 100%

Increase Credit Lines 0% 20% 55% 100%

Implement Customer Retention Programs 0% 25% 60% 100%

Activities

1 - 7 of 20 PREVIOUS NEXT

- Finance Charts Templates for 2009**
updated by Sam Curman Today 9:30 AM [More](#)
- Renovations Budget Discussions**
updated by Sam Curman Today 9:30 AM [More](#)
- Marketing Materials**
updated by Gail Chao Today 9:30 AM [More](#)
- Greenworld Conference Preparation**
updated by Sam Curman Today 9:30 AM | DUE JAN 21 [More](#)

Day at a Glance

Wed, November 14, 2009

Mei & Michelle's Anniversary

10:00 AM - 11:00 AM
Marketing Meeting
Gail Chao

11:00 AM - 12:00 PM
Product Analysis Update
Sam Curman

Colleagues

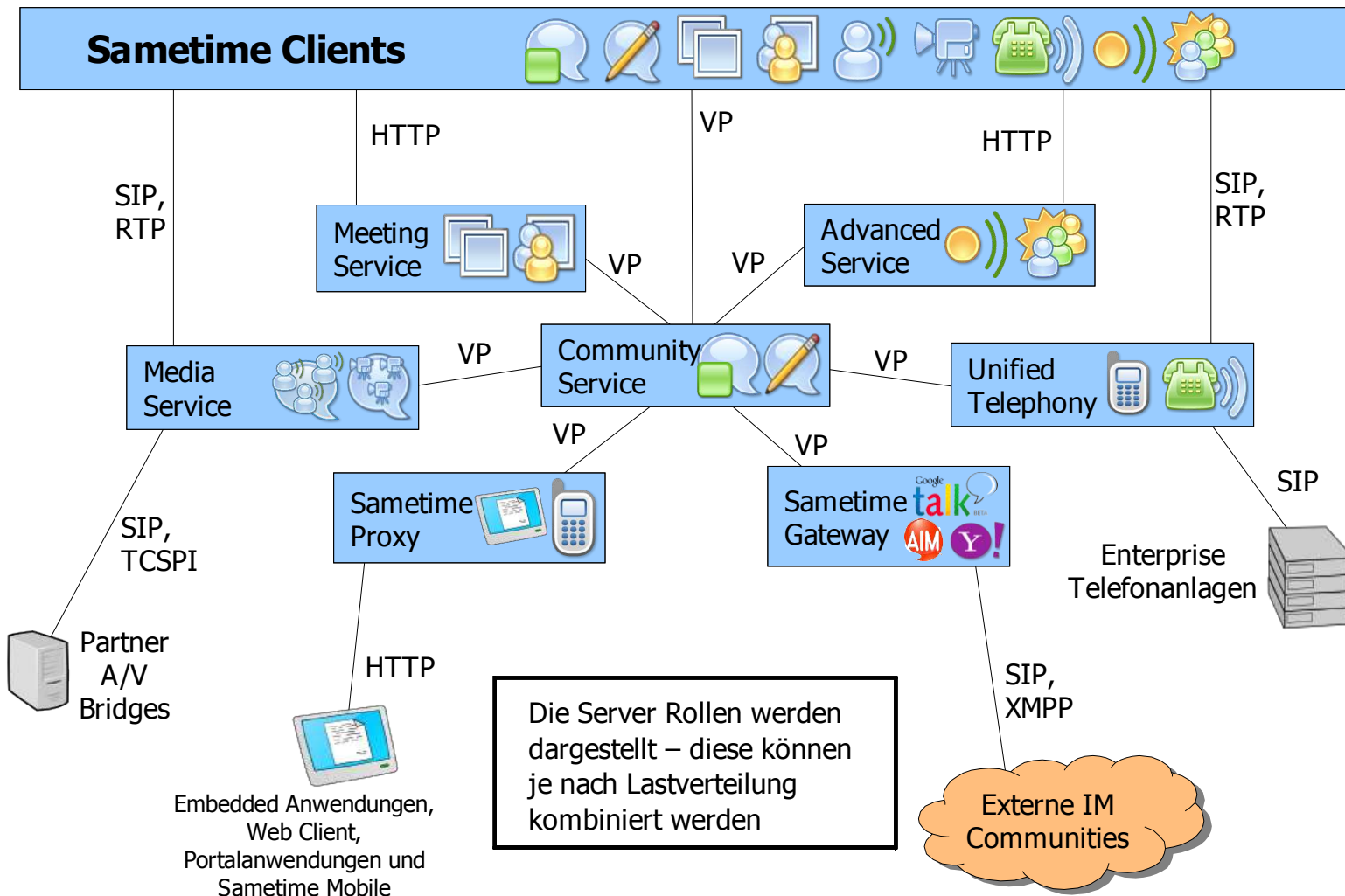
- Dan Misawa** I am Available
- Ed ElAmon** Leaving early today
- Gail Chao** Finishing up a report
- Jasmin Haj** Interviewing a job candidate
- Rita Ferrar** Going out for lunch, any one w...
- Dennis Mickies** Available
- Sam Curman** Stepped away, back in a minute
- Heather Reeds** Back at 2PM

Tools

- Expense Reimbursement
- Benefits Enrollment
- Human Resources

Änderungen vorbehalten

Lotus Sametime 8.5 – System Architektur



Änderungen vorbehalten

Lotus Sametime 8.5 System Console

View: All Tasks

- Welcome
- Guided Activities
 - Connecting to a database
 - Configuring IHS
 - Creating and expanding clusters
 - Connecting to LDAP
 - Enabling global security
 - Routing requests from a Web server to an application server
- Servers
- Applications
- Resources
- Security
- Environment
- System administration
- Users and Groups
- Monitoring and Tuning
- Troubleshooting
- Service integration
- UDDI

Welcome

Integrated Solutions Console Standard Edition provides a common administration console for multiple products. The table lists the product suites that can be administered through this installation. Select a product suite to view more information.

Suite Name	Version
Sametime Advanced server	8.0.1
Sametime Meeting server	8.5
Sametime System Console	8.5
Sametime Unified Telephony	8.0
SIP Proxy and Registrar	8.5
WebSphere Application Server	7.0.1

Sametime Gateway

Sametime Unified Telephony

Sametime Media

Sametime Presence/IM

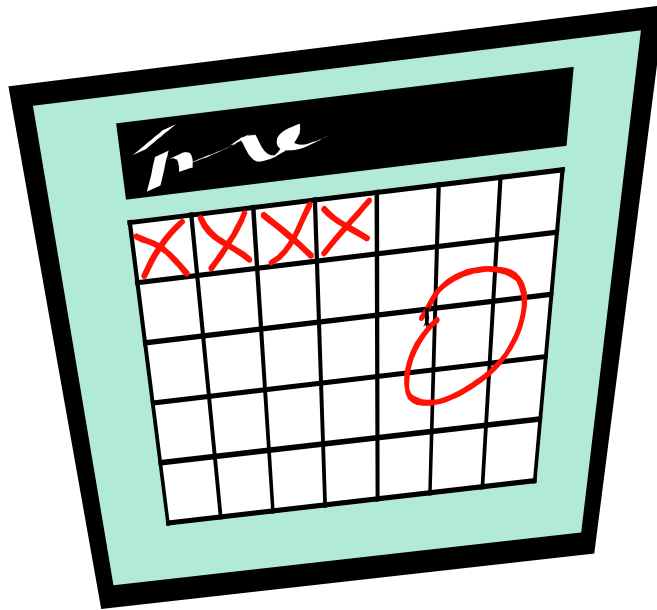
Sametime Meetings

Sametime Advanced*

* Future release of server required

Änderungen vorbehalten

Ab wann ist IBM Lotus Sametime 8.5 verfügbar?





Vielen Dank für Ihre Aufmerksamkeit!

  **Lars Thielker**
GER SWG Technical Sales Lotus, Channel
+49 160 90790761 / STG, BW, DE / 4:56 PM
I am available @ HV Stuttgart 1-2-07/06

LThielker@de.ibm.com
49-30-7203-5934
Pascalstr. 100
Stuttgart 70569
Germany



IBM Software Partner Academy Program

Noch Fragen?

Kontaktieren Sie Lars Thielker

SWG Technical Sales Lotus, Channel

email: LThielker@de.ibm.com

Tel: 0160-90790761