

IBM Rational Team Webtop software

Highlights

- **View and edit data, traceability and attribute information from disparate tools within a single Web browser.**
- **Communicate with your teammates and customers with integrated change management and discussion threads.**
- **Use standard Microsoft Internet Explorer and Firefox Web browsers for client access.**
- **Launch power clients in the right context when needed.**
- **Help ensure clients are all on the latest version via server-side-only updates.**
- **Reduce training needs through intuitive, consistent user interface and on demand access to best practices from EPF and RMC based processes such as IBM Rational Harmony.**

Team productivity is often hampered by the islands of information that are created by powerful, yet disconnected, tools. While these products can be ideal for individual team members, they can fragment workflow and impair productivity.

IBM® Rational® Team Webtop™ provides a better way to work. This unique software product offers composite views of information drawn from the discipline-based tools used across the project lifecycle for change management, modeling and requirements management. The Rational Team Webtop server can leverage your existing tool investments and infrastructure and adds the capability to mash up data from disparate repositories.

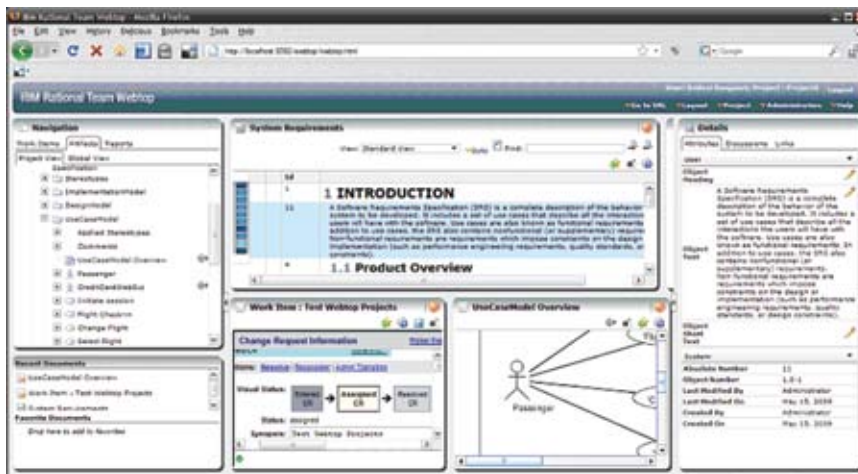


Figure 1: Composite view of data from multiple tools

Composite views of disparate tools via a new integration architecture

While individual tools provide comprehensive desktop clients and occasional Web-based access, their scope is limited to the data stored in the individual tool. Data from other tools can only be accessed through brittle and error-prone point-to-point integrations and data replication.

Rational Team Webtop offers a better way to collaborate by leveraging a new integration architecture. Rational Team Webtop leaves the data in its native repository and makes it accessible via a tool-specific Web widget that enables you to view and manipulate the data through Rational Team Webtop.

All of the widgets are hosted together in a collaborative Web-based environment. As a result, Rational Team Webtop provides a flexible and rich experience with a consistent user interface and single sign-on. This unique approach helps promote relationships and collaboration across disciplines and data sources because users simply drag and drop information across widgets to view and edit data and to participate in threaded discussions.

Find the information you need, when you need it

To make it easy for you to find your way around the myriad artifacts that comprise your project, Rational Team Webtop provides a browser that shows all the artifacts relevant to your project in a single view, even though, they may actually be stored in multiple tools. A "breadcrumb trail" and recent documents/favorites list help you get to the right information quickly. Collaboration with your team and customers is greatly enhanced by an integrated work items list and discussion thread. Integrated Eclipse Process Framework (EPF) and Rational Method Composer (RMC) based processes such as IBM Rational Harmony™ give you access to best practices when and where you need it.

With Rational Team Webtop, you access information from individual tools through widgets, which are small self-contained applications that snap into the Rational Team Webtop environment. You choose which widgets to use and how you will organize them in your personalized Rational Team Webtop environment.

Rational Team Webtop widgets are currently available for IBM Rational Change, Rational DOORS® and Rational Tau. To create a comprehensive, flexible, environment more widgets are currently under development.

- *IBM Rational Change Widget for Team Webtop*
With the IBM Rational Change Widget for Rational Team Webtop, you can submit new work items such as change requests or enhancement requests; view which work items you have been assigned; establish and traverse links between work items and other artifacts; and change the status, as well as edit the details of a work item.
- *IBM Rational DOORS Widget for Team Webtop*
With the IBM Rational DOORS Widget for Team Webtop, you can view and edit requirements and traceability relationships from your central Rational DOORS repository. You can access requirements descriptions, including rich text, OLE objects, and tables, as well as requirements attributes and traceability links.

- *IBM Rational Tau Widget for Team Webtop*

With the IBM Rational Tau Widget for Rational Team Webtop, you can view multiple UML models at the same time, view individual model element properties, and raise change requests and discussion threads against model elements.

How it works

Rational Team Webtop uses rich Internet application (RIA) technologies to deliver a “zero-install” client that runs within the Microsoft® Internet Explorer® and Mozilla Firefox Web browsers. Rational Team Webtop server components are deployed in a multi-tier architecture providing scalable access through an application server.

For more information

To learn more about IBM Rational Team Webtop, IBM Rational Harmony, IBM Rational DOORS and IBM Rational Tau software, contact your IBM representative or IBM Business Partner, or visit:

ibm.com/software/rational



© Copyright IBM Corporation 2009

IBM Corporation
Software Group
Route 100
Somers, NY 10589
U.S.A.

Produced in the United States of America
June 2009
All Rights Reserved

IBM, the IBM logo, ibm.com, Rational, Harmony and Webtop are trademarks or registered trademarks of International Business Machines Corporation in the United States, other countries, or both. If these and other IBM trademarked terms are marked on their first occurrence in this information with a trademark symbol (® or ™), these symbols indicate U.S. registered or common law trademarks owned by IBM at the time this information was published. Such trademarks may also be registered or common law trademarks in other countries. A current list of IBM trademarks is available on the Web at "Copyright and trademark information" at ibm.com/legal/copytrade.shtml

Microsoft and Internet Explorer are trademarks of Microsoft Corporation in the United States, other countries, or both.

Other company, product and service names may be trademarks or service marks of others.

References in this publication to IBM products and services do not imply that IBM intends to make them available in all countries in which IBM operates.

The information contained in this document is provided for informational purposes only and provided "as is" without warranty of any kind, express or implied. In addition, this information is based on IBM's current product plans and strategy, which are subject to change by IBM without notice. Without limiting the foregoing, all statements regarding IBM future direction or intent are subject to change or withdrawal without notice and represent goals and objectives only. Nothing contained in this documentation is intended to, nor shall have the effect of, creating any warranties or representations from IBM (or its suppliers or licensors), or altering the terms and conditions of the applicable license agreement governing the use of IBM software.

IBM customers are responsible for ensuring their own compliance with legal requirements. It is the customer's sole responsibility to obtain advice of competent legal counsel as to the identification and interpretation of any relevant laws and regulatory requirements that may affect the customer's business and any actions the customer may need to take to comply with such laws.