



# IBM Rational Change and Subversion with Mylyn

## Highlights

- **Helps establish a powerful, consistent process for managing change requests.**
- **Supports improved quality through a deeply integrated platform for software development for both open source and commercial tools.**
- **Promotes change management across heterogeneous software configuration management repositories.**
- **Unites multiple ALM solutions on a single change management platform.**
- **Extends visibility and drives compliance best practices through reports, measurements and metrics.**

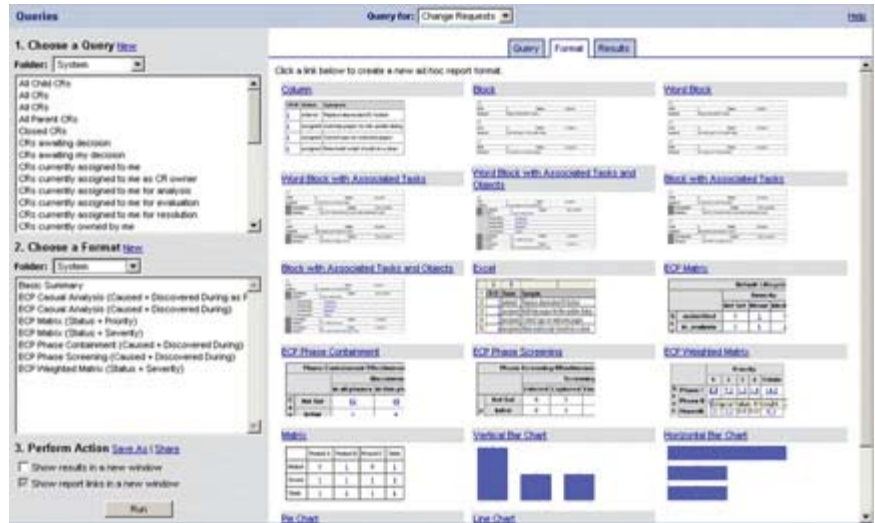


Figure 1: Enterprise change management capabilities with IBM Rational Change.

With IBM® Rational® Change, Mylyn and Subversion integration, you can help establish a consistent change management process for your Subversion development environment through the Rational Change platform via the Mylyn interface in Eclipse.

IBM Rational Change software is a Web-based, enterprise change management platform designed

to improve communication and collaboration across the development lifecycle. Mylyn, a task-management extension for the Eclipse environment, monitors and creates contextual information. Subversion is a popular, open source revision-control system. The combination of these products creates a virtually seamless environment for software change and release management.



## Manage change across heterogeneous change repositories

Many of today's organizations want to leverage Subversion, the popular, open source revision control tool, while continuing their investment in broader, established supply-chain management solutions. With IBM Rational Change, you can benefit from an integrated change management platform that standardizes your software configuration and change management while promoting interoperability with other leading products.

Through its integrations with the IBM Rational Synergy, IBM Rational ClearCase® and Subversion change and release management products, IBM Rational Change provides a comprehensive enterprise change management environment. This can be extended to synchronize information between myriad change management and application lifecycle management (ALM) products from multiple vendors. As a flexible solution for change management, Rational Change software unifies the development lifecycle on a single change management platform.

## Help maximize the advantages of using Subversion with IBM Rational Change

For projects using Subversion as their revision-control repository, the Change-Mylyn connector utilizes IBM Rational Change as a task repository

to provide you with task context and the associated change information from within the Eclipse integrated development environment (IDE). The Rational Change environment is designed to provide you with the benefits of enterprise change management: enhanced workflow and process management, custom attribute and property definitions, reporting and metrics, security policies, roundtrip traceability, highly collaborative decision making, and development lifecycle support.

## How it works

As the central development workbench, the Eclipse IDE links Subversion commit information for a change request in Change via the Mylyn framework. The integration selects committed changes from within the Subversion repository for a particular change request with objects in the Rational Change repository. This associates the Subversion change set to the change request. The change set from the commit information is displayed as live Subversion links in the change request, providing exceptional control and traceability.

## For more information

To learn more about IBM Rational software, contact your IBM representative or IBM Business Partner, or visit:

[ibm.com/software/rational](http://ibm.com/software/rational)

© Copyright IBM Corporation 2009

IBM Corporation  
Software Group  
Route 100  
Somers, NY 10589  
U.S.A.

Produced in the United States of America  
June 2009  
All Rights Reserved

IBM, the IBM logo, [ibm.com](http://ibm.com), Rational and ClearCase are trademarks or registered trademarks of International Business Machines Corporation in the United States, other countries, or both. If these and other IBM trademarked terms are marked on their first occurrence in this information with a trademark symbol (® or ™), these symbols indicate U.S. registered or common law trademarks owned by IBM at the time this information was published. Such trademarks may also be registered or common law trademarks in other countries. A current list of IBM trademarks is available on the Web at "Copyright and trademark information" at [ibm.com/legal/copytrade.shtml](http://ibm.com/legal/copytrade.shtml)

Other company, product and service names may be trademarks or service marks of others.

References in this publication to IBM products and services do not imply that IBM intends to make them available in all countries in which IBM operates.

The information contained in this document is provided for informational purposes only and provided "as is" without warranty of any kind, express or implied. In addition, this information is based on IBM's current product plans and strategy, which are subject to change by IBM without notice. Without limiting the foregoing, all statements regarding IBM future direction or intent are subject to change or withdrawal without notice and represent goals and objectives only. Nothing contained in this documentation is intended to, nor shall have the effect of, creating any warranties or representations from IBM (or its suppliers or licensors), or altering the terms and conditions of the applicable license agreement governing the use of IBM software.