

IBM Rational Change Software

Highlights

- **Manage your heterogeneous software change and configuration management repositories using a high-availability system with a central IBM Rational Change server.**
- **Facilitate security, accessibility and uptime for distributed users with a scalable, centralized user profile management solution.**
- **Leverage the benefits of global application lifecycle management by bringing multiple lifecycle solutions together on a single Rational Change platform.**
- **Obtain measurements and metrics that extend your visibility, driving best compliance practices.**
- **Make more informed decisions about change implications with the confidence of having control over your processes.**

To be competitive, your organization must effectively meet complex business demands. You must build a competency to steadfastly respond to external and internal change-led pressures. In the face of short-term strategies, incompatible IT and development processes, legacy systems, and today's challenges, many organizations struggle with managing change.

The IBM® Rational® Change platform offers you a comprehensive approach to efficiently manage change while alleviating many of the risks involved. The solution's central repository harmonizes your communication with distributed and disparate change sources and application lifecycle management (ALM) products, and the scalable, proven enterprise change management process provides for consistent change management across your organization.

Centralized change request repository support

Your change management infrastructure has to provide a synchronized interface across heterogeneous code repositories from multiple vendors. The Rational Change platform is geared to help do just that. The central change repository architecture offers change request management across distributed databases. It provides formal traceability relationships between change requests and engineering tasks that drive your production environment. You can synchronize change request constructs among myriad change management repositories from multiple vendors. You can also drive development in distributed locations via relationships to software repository objects. There is considerable flexibility in defining the level of relationship-mapping through the underlying synchronization framework—its usage is highly configurable to your unique business drivers.

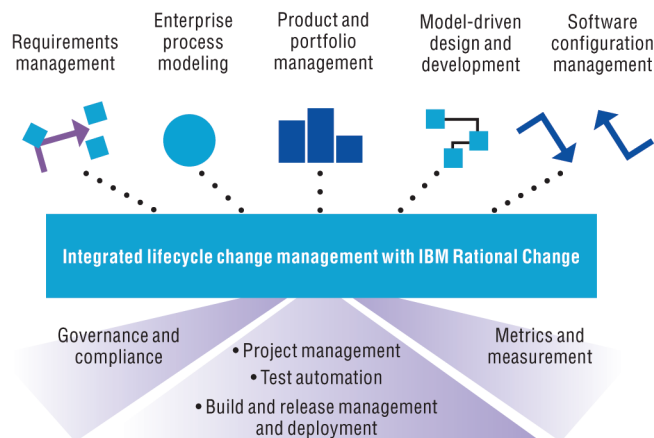


Figure 1: Centralized change management with IBM Rational Change.

Proven, mature enterprise change process framework

Organizations need to provide a high ROI to their stakeholders by internalizing a robust, comprehensive change management process. Having a formalized change management system is a positive first step toward achieving the advantage your company is looking for. Rational Change software provides a mature, high-ROI process package for user-friendly, consistent change management across organizations of virtually all types and sizes.

The IBM Rational enterprise change process framework can ensure that your change management journey doesn't begin in a vacuum. It provides key functionality specifically designed for CMMI and Software Process Improvement and Capability determination (SPICE) compliance, including project scheduling, effort estimation, causal analysis and process enforcement. At the same time, the framework is flexible and extensible.

Analytical, standards-based, realtime reporting and decision support

With the Rational Change platform, reporting on software quality measurement and metrics means you can have the actionable information you need, when you need it. Whether you need an objective high-level view into your development schedule or critical QA metrics, you can monitor the data that's most important to you.

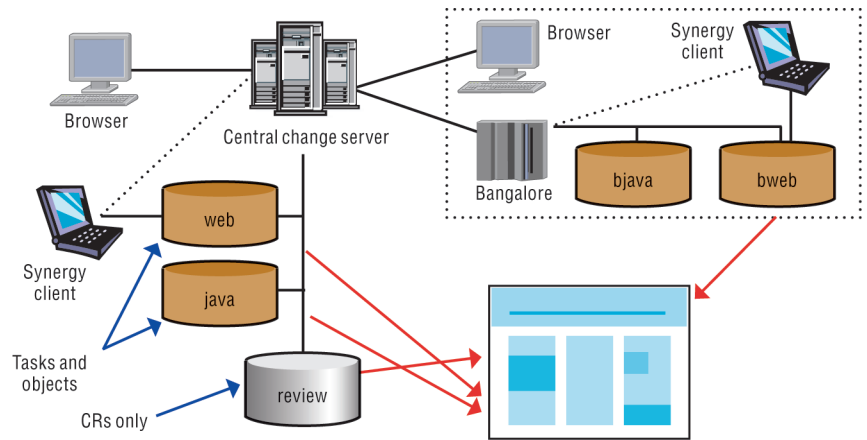


Figure 2: How the IBM Rational Change platform works.

With support for historical trend analysis data, customizable reporting interfaces, unique user home pages, status indicators, traceability and prioritization capabilities, multiple charting and visualization options, and powerful querying abilities, you can focus on process improvement, reduce project delays and meet time-to-market promises by producing reliable budgets, schedules and testing plans.

Enhanced integrations that unify your teams around a common ALM platform

IBM Rational Change is designed to centralize change management across disparate software configuration management (SCM) repositories in your organization. The new IBM Rational Directory Server provides you with centralized identity and profile management for users and is compatible with many IBM Rational products.

How it works

The Rational Change platform works by enabling your organization to centralize its ALM process, consistently implementing change management. Run in stand-alone or central and remote modes, the Rational Change platform enables geographically remote users to log in via their Web browser to the central server and perform any change request (CR), task-based submission or transition they need.

For more information

To learn more about IBM Rational software, contact your IBM representative or IBM Business Partner, or visit:

ibm.com/software/rational



© Copyright IBM Corporation 2009

IBM Corporation
Software Group
Route 100
Somers, NY 10589
U.S.A.

Produced in the United States of America
June 2009
All Rights Reserved

IBM, the IBM logo, ibm.com, Build Forge and Rational are trademarks or registered trademarks of International Business Machines Corporation in the United States, other countries, or both. If these and other IBM trademarked terms are marked on their first occurrence in this information with a trademark symbol (® or ™), these symbols indicate U.S. registered or common law trademarks owned by IBM at the time this information was published. Such trademarks may also be registered or common law trademarks in other countries. A current list of IBM trademarks is available on the Web at "Copyright and trademark information" at ibm.com/legal/copytrade.shtml

Other company, product, or service names may be trademarks or service marks of others.

References in this publication to IBM products or services do not imply that IBM intends to make them available in all countries in which IBM operates.

The information contained in this document is provided for informational purposes only and provided "as is" without warranty of any kind, express or implied. In addition, this information is based on IBM's current product plans and strategy, which are subject to change by IBM without notice. Without limiting the foregoing, all statements regarding IBM future direction or intent are subject to change or withdrawal without notice and represent goals and objectives only. Nothing contained in this documentation is intended to, nor shall have the effect of, creating any warranties or representations from IBM (or its suppliers or licensors), or altering the terms and conditions of the applicable license agreement governing the use of IBM software.

IBM customers are responsible for ensuring their own compliance with legal requirements. It is the customer's sole responsibility to obtain advice of competent legal counsel as to the identification and interpretation of any relevant laws and regulatory requirements that may affect the customer's business and any actions the customer may need to take to comply with such laws.