

# IBM Lotus Notes and Lotus Domino software.

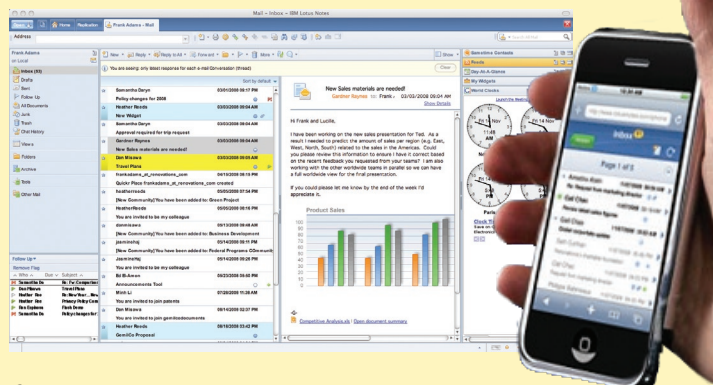
What's new in version 8.5

## Deliver an enhanced user experience

Elevate collaboration and enhance efficiency with tools that empower users to take action, create and share knowledge, and collaborate with teams.

### Socialize

- Tag the documents in IBM Lotus Notes® software that you know you'll use again and share them with your colleagues.<sup>1</sup>
- Tap the knowledge capital within your organization and expand personal networks based on people's roles and other criteria.<sup>2</sup>
- Let in-boxes provide the impetus and the content that can be used to find focused search results, quickly getting you to the information you are looking for.<sup>3</sup>
- Find information directly through widgets and live text support on the Linux® and Apple Mac operating systems.



### Connect

- Maintain greater control over your schedule by integrating professional and public calendars into a single, easy-to-use view.<sup>4</sup>
- Quickly share business contacts across platforms.

### Access

- Collaborate the way you want, with Lotus Notes 8.5 support on the Apple Mac and Ubuntu platforms.
- Provide broad support for roaming users and potentially reduce the need for dedicated laptops by enabling users to move across clients with their Lotus Notes desktop and preferences intact.
- Enable expanded support for mobile devices including Nokia S60 devices,<sup>5</sup> the Apple iPhone,<sup>6</sup> Microsoft Windows Mobile® and others.

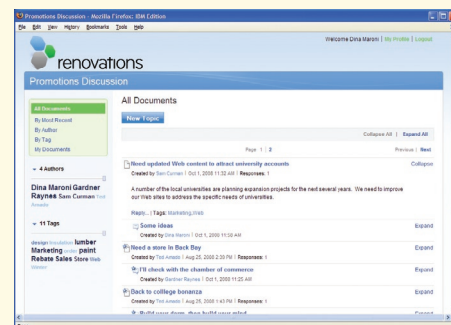


## Drive greater business value

Help drive top-line growth and bottom-line savings by streamlining your existing business processes and eliminating roadblocks.

### Empower developers

- Deliver new applications quickly with a development environment built on Eclipse technology, which helps improve navigation and provide developers with a means of integrating third-party tools.<sup>7</sup>
- Use XPages rich Internet application capabilities to create compelling Web applications while writing little to no code.<sup>8</sup>



## Boost IT performance

Address the host of issues you face daily, including security, environmental and budget pressures.

### Go green

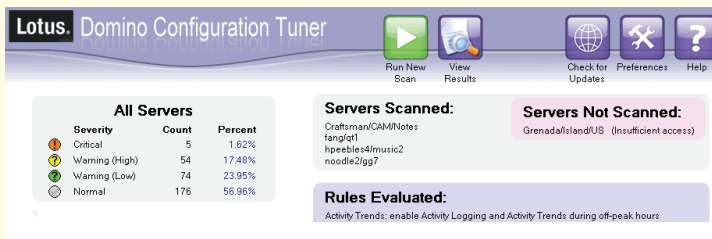
- Potentially save 40 to 60 percent of disk space with compression (your results will vary), potentially helping your business reduce energy consumption from physical disks and input/output (I/O).
- Minimize redundant file attachments and I/O with the new IBM Lotus® Domino® attachment and object service (DAOS), which uses a separate repository on the Lotus Domino server for attachments.
- Potentially improve performance through I/O and CPU reduction for commonly used Lotus Domino server tasks.

### Protect

- Minimize user burdens through optional shared sign-on with Microsoft® Windows® software.
- Easily manage users' Lotus Notes ID files via the Lotus Notes ID vault.
- Preemptively protect your e-mail infrastructure from spam, viruses and other threats originating on the Internet—before they reach your Lotus Domino servers.<sup>9</sup>

## Optimize

- Quickly detect and proactively resolve server issues using the IBM Lotus Domino Configuration Tuner tool.
- Simplify group membership by specifying predefined criteria to automatically determine and update groups.
- Streamline policy settings through the ability to easily assign an appropriate user or group name in a policy document.
- Enhance scalability and memory availability through new 64-bit platform support for Lotus Domino, including Microsoft Windows 2008, Linux on IBM System z® and IBM AIX® 64-bit platforms.
- Optionally elect to have IBM host your Lotus Domino servers, helping you to minimize overhead, generate predictable costs and rapidly roll out a Lotus Notes and Domino environment.<sup>10</sup>
- Potentially improve quality of service through mail routing optimization to help drive peak performance and speed of delivery.



## A solution for virtually any size company

IBM Lotus software isn't just for big businesses—it's for all businesses. Buy what you need for today and easily scale and add capabilities as your business needs change. Small businesses can get started quickly and cost-effectively using an IBM Lotus Foundations™ *Start* solution. Give it a try, you'll be surprised by its power and simplicity.

## For more information

To learn more about IBM Lotus Notes and Domino software, contact your IBM representative or IBM Business Partner, or visit:

[ibm.com/software/lotus/notesanddomino](http://ibm.com/software/lotus/notesanddomino)



© Copyright IBM Corporation 2008

Lotus Software  
IBM Software Group  
One Rogers Street  
Cambridge, MA 02142  
U.S.A.

Produced in the United States of America  
December 2008  
All Rights Reserved

IBM, the IBM logo, ibm.com, Lotus, Domino, Lotus Notes, and Notes are trademarks or registered trademarks of International Business Machines Corporation in the United States, other countries, or both. If these and other IBM trademarked terms are marked on their first occurrence in this information with a trademark symbol (® or ™), these symbols indicate U.S. registered or common law trademarks owned by IBM at the time this information was published. Such trademarks may also be registered or common law trademarks in other countries. A current list of IBM trademarks is available on the Web at "Copyright and trademark information" at [ibm.com/legal/copytrade.shtml](http://ibm.com/legal/copytrade.shtml)

Microsoft and Windows are trademarks of Microsoft Corporation in the United States, other countries, or both.

Linux is a registered trademark of Linus Torvalds in the United States, other countries, or both.

Other company, product, or service names may be trademarks or service marks of others.

References in this publication to IBM products and services do not imply that IBM intends to make them available in all countries in which IBM operates.

The information contained in this documentation is provided for informational purposes only. While efforts were made to verify the completeness and accuracy of the information contained in this documentation, it is provided "as is" without warranty of any kind, express or implied. In addition, this information is based on IBM's current product plans and strategy, which are subject to change by IBM without notice. IBM shall not be responsible for any damages arising out of the use of, or otherwise related to, this documentation or any other documentation. Nothing contained in this documentation is intended to, nor shall have the effect of, creating any warranties or representations from IBM (or its suppliers or licensors), or altering the terms and conditions of the applicable license agreement governing the use of IBM software.

1, 2, 3, 4 Available through integration with IBM Lotus Connections software.

5 This capability is provided by IBM Lotus Notes Traveler software.

6 This capability is provided by IBM Lotus iNotes™ software.

7,8 This capability is provided by IBM Lotus Domino Designer software.

9 This capability is provided by IBM Lotus Protector for Mail Security software.

10 This service is provided by IBM Lotus Notes Hosted Messaging solutions.