



Lotus

Workflow

3.0
RELEASE

KEY FEATURES AND BENEFITS

- **Notes® and Web Viewers** let users see their work assignments as part of a flow diagram — from within Notes or from a Web browser.
- **Web Viewer** lets users check the status and context of a workflow instance or job from their web browser.
- **Enhanced Web Solutions and WebSphere support.** A new Java API in Lotus Workflow provides integration with IBM's WebSphere™ to support the development and deployment of eBusiness solutions. A new JavaScript API lets you customize web applications.
- **Out-of-the box integration with Sametime,** providing instant messaging capabilities so you can keep everyone in the process loop involved as needed.
- **Customizable Web and Notes UI.** Lotus Workflow features a UI separated from the backend workflow services, which allows you to create your own interface or customize the standard UI design to one that matches your particular development standards, industry and/or preferences.

Workflow Automation for the Enterprise.

Lotus Workflow™ 3.0 allows organizations to standardize and streamline time-consuming, people-based activities and track their progress. Lotus Workflow provides a platform for automating, refining and managing complex business processes to improve response time and reduce costs. Using Lotus Workflow, you can create workflow applications that perform these processes more quickly and consistently, with fewer bottlenecks. The applications can be easily updated to reflect changes in the organization and to build increased efficiencies into the process.

Building on Your Domino Investment

Lotus Workflow fully utilizes Lotus® Domino's™ secure message routing, replication, and Web browser support to create workflow designs that are scalable, manageable and reusable enterprise-wide. Lotus Workflow easily integrates with other Lotus products such as Lotus Domino.Doc®, Sametime™ and Quickplace™ providing more robust solutions.

Streamlining Your Application Design

Lotus Workflow improves developers' productivity by leveraging their existing knowledge of Domino and other Lotus products. Process logic is separated from the application's design, so Lotus Workflow applications can be easily maintained and quickly updated or customized, with little or no programming required.

Visual Tools and Powerful Process Logic

Lotus Workflow provides an intuitive visual design environment that includes workflow diagrams to help managers and developers work together to design and review business processes. Powerful built-in process logic lets you assign, schedule, route, and track each step of the job, no matter how complex.

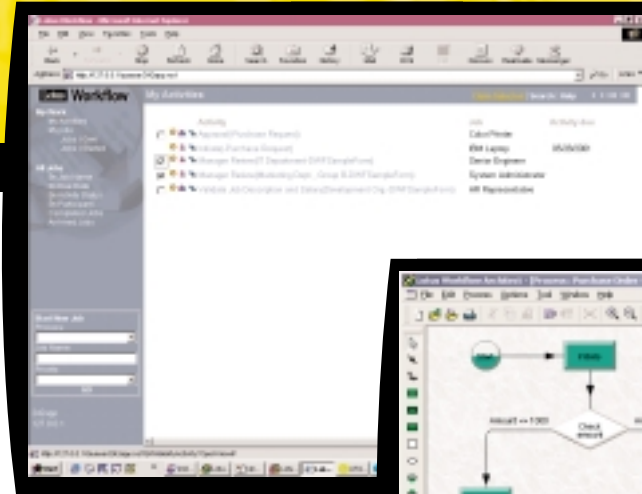
How You Benefit

Using Lotus Workflow to define and automate workflow activities allows organizations to capture best practices and to reduce wasted steps in business processes, improving productivity and response time.

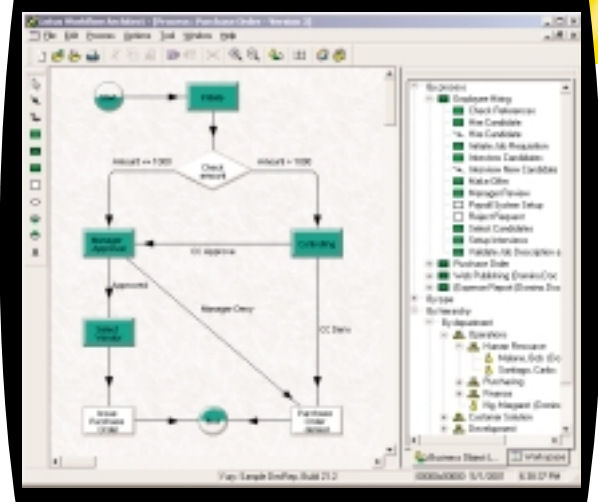
FEATURES OVERVIEW

With its flowchart-like visual interface and business object library, Lotus Workflow lets you rapidly develop workflow applications and cost-effectively deploy them throughout your organization. Features include:

- **100% Domino native** (doesn't require custom server tasks or special files located on client).
- **Multiple platform support** on AS/400, S/390, RS/6000, Linux (SuSE Linux 7.0, Red Hat Linux 6.2, TurboLinux 6.0, Caldera OpenLinux eServer 2.3), Solaris 2.7, and Windows NT/Windows 2000 environments.
- **Support for fifteen languages:** English, German, Spanish, Danish, Portuguese-Brazilian, Swedish, Norwegian, Dutch, Finnish, French, Italian, Chinese, Japanese, Korean and Thai.
- **Built-in browser access and XML support.** Domino's pervasive support for Web protocols makes workflow applications instantly Web-ready.
- **Integration with Lotus Workflow Developer's Toolkit** allows application developers to build more powerful workflow solutions and leverage other directories including the Domino Directory and LDAP.
- **Integrate Workflow and Document Management functions.** Lotus Workflow and Domino.Doc are inherently synergistic. Organizations can store and manage documents throughout their life cycle within Domino.Doc, while using Lotus Workflow applications to route documents and other work across the enterprise.
- **Visual Workflow development tools.** An intuitive graphical interface lets you specify business logic, participants and their roles, and relevant data—all without extensive programming. Enhanced modeling capabilities in the Architect including decision nodes and support for LDAP.
- **"Rules and roles" based.** Content and process logic are always kept separate, so you can easily reuse components of existing workflow Applications when creating or updating new ones. You can standardize workflow processes like document approval routes and authorized signer names — no need to recode duplicate logic in new applications.
- **Sophisticated Roles Directory.** Efficiently define participants in workflow processes, what operations they can perform and what data they can access. Use roles to specify capabilities for groups of participants. Domino's pervasive and highly granular security supports all Lotus Workflow access controls.



Lotus Workflow's intuitive graphical interface simplifies workflow design and maintenance.



Lotus Workflow 3.0 offers expanded web-based interfaces and increased application performance.

- **Component library.** Use the built-in component library to jump-start application development.
- **Advanced Workflow Capabilities.** Lotus Workflow automatically assigns activities to a substitute if someone isn't available. Advanced time management warns of missed deadlines and unclaimed activities. Parallel routing lets several tasks be done simultaneously.

The Lotus Workflow Architecture.

Effective workflow processes have three basic components:

- Process logic
- Directory of participants in the process
- The information that processes act upon

Lotus Workflow's Engine mirrors this structure:

- The Engine, the heart of the system, includes Domino databases that implement process logic, directory and process-related information objects and links. The Workflow Engine allows developers to save and reuse process logic and components, reducing the time needed to create new Workflow applications. The Engine utilizes Notes™ and Domino services and design tools, including Domino Designer
- The Architect enables Workflow designers to specify workflow process logic, process participants and rules governing participation—without programming. The Architect and the Engine are linked, so that processes designed with the Architect are executed by the Engine.
- The Viewer enables workflow participants to view the context and status of work for each job initiated or assigned to them.

System Requirements.

Lotus Workflow Viewer 3.0 for Windows, Lotus Workflow Architect 3.0, and Lotus Workflow Engine 3.0 (Client) all require Windows 95/98/2000, NT (3.51 or 4.0), or Windows 2000 and Lotus Notes® R4.6.1 or higher. The Lotus Workflow Engine 3.0 Application Web UI requires Lotus Domino 4.6.2 or higher Server and a Web browser (i.e. Microsoft Internet Explorer 3.0 or higher, Netscape Navigator 3.0 or Higher). Lotus Workflow Engine 3.0 (Server) software requirements include Windows NT 3.51 (Intel only) or NT 4.0 and Lotus Domino R5.0.3 or higher. For IBM AS/400, S/390 and RS/6000, Lotus Domino R5.0.3 or higher (English and International English versions only) is required.

For the latest information on Lotus Workflow visit www.lotus.com/workflow



An IBM Company



Copyright © 2001 Lotus Development Corporation, 55 Cambridge Parkway, Cambridge, MA 02142. All rights reserved. Lotus Development Canada Ltd. 10 Bay Street, Toronto, Ontario M5J 2R8. Lotus also has offices in Mexico, Brazil, Venezuela, Colombia, Chile, and Argentina. Lotus, Lotus Notes, Notes and Domino.Doc are registered trademarks. Domino, Lotus Workflow, Sametime and Quickplace are trademarks of Lotus Development Corporation. IBM is a registered trademark and the e-business logo and WebSphere are trademarks of International Business Machines Corporation, used under license. All other trademarks are the property of their respective companies. Printed in U.S.A. 05/01.
Job No. DOM-xxxxx\AA

Part No. xxxxxNA