

What if there was a place
where things were **simpler**.

Where everything you wanted
was right there, **within reach**.

And just being there helped make
things go a little bit **easier**.

What if this place already existed?

Well it does.





Welcome to your IBM® Workplace™ solution.

It's the evolution of your desktop. Only this time evolution means simpler and more intuitive. Because our newest innovations make your IBM Workplace solution just that—yours. Customized and integrated so all the collaboration tools and applications you need are right where you need them. No more chasing information. With IBM Workplace software, the tools you need are always available.

Different people have different needs, depending on their jobs—even in the same department. Which is why IBM Workplace can be unique for each user or job function. Letting you experience a simpler, better way to work.

IBM



Making it happen every day.

Welcome to Janet's IBM Workplace solution.

As the **group assistant**, Janet is at the hub of activity, in touch with everyone—wherever they are. Her IBM Workplace solution brings e-mail, instant messaging and calendar together and even helps track visitors—both customers and sales reps.



Handle HR issues.

Since Janet's just starting out in her career, she likes to track any training classes she's taking, as well as her benefits and latest paychecks.



Set up meetings.

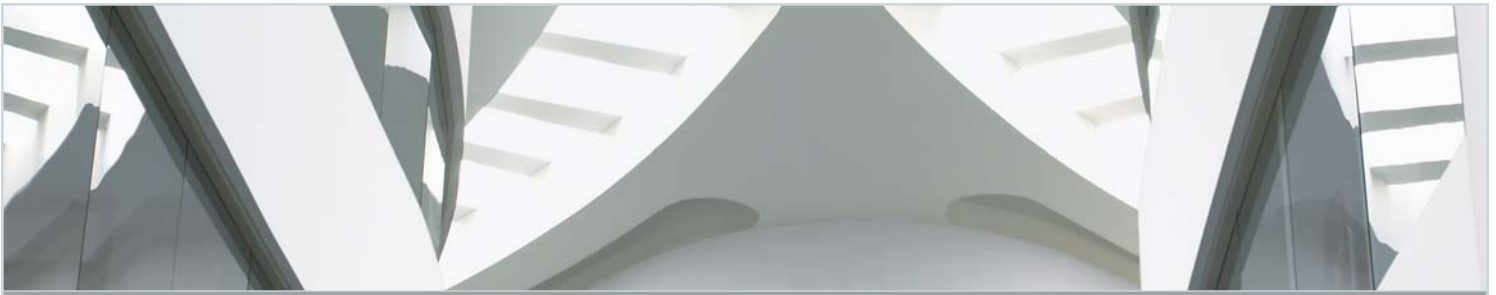
Double-clicking on a name in her PeopleFinder directory lets Janet send them an instant message. Without having to open up a new screen.



Manage the day.

Janet has everyone's daily schedule right there in front of her. Her team can view her schedule too, even from remote locations.

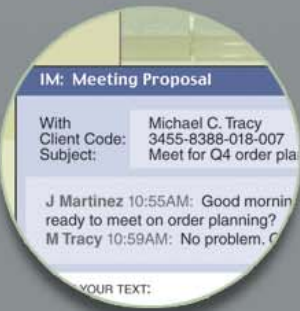




In the know on the road.

Welcome to Juan's IBM Workplace solution.

As the group's top **sales rep**, Juan spends most of his day in the field, and his IBM Workplace solution goes with him. When he is mobile, Juan can schedule meetings, send IMs, even open a PowerPoint® presentation.



Plan sales calls.

Juan can use instant messaging to schedule meetings with clients wherever he is and get it on his calendar for everyone to see.



Track clients.

Using his client management application on his handheld, Juan can get real-time information about the clients he's scheduled to meet.



Inventory control.

No matter where he is, Juan can access his latest inventory, pricing and sales information. Letting him place orders immediately.

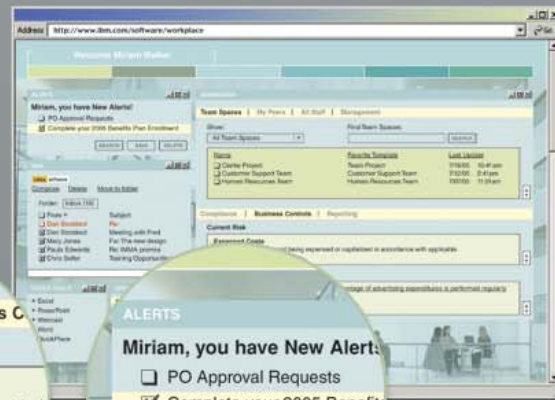




20/20 vision at the top.

Welcome to Miriam's IBM Workplace solution.

As **team leader**, Miriam needs to keep up with her staff as well as company-wide management issues. Her IBM Workplace solution puts it all on one convenient screen. And puts Miriam on top of her game.



Manage projects.

Miriam uses her team space to track ongoing projects. She can even hold discussions to see what needs her immediate attention.



Monitor compliance.

From her dashboard, Miriam can check to see if her department is keeping up with required reporting and make plans to improve performance.



Get updates.

Miriam needs to keep up with the latest industry developments—both internal and external. Her dashboard gives her the news as it happens.





It's simpler. (Collaboration, that is.)

Thanks to IBM Workplace software, it's never been simpler for your people to collaborate. To focus. To make decisions quickly and efficiently. IBM Workplace takes all the collaborative tools and applications your staffers currently use and puts them into one very simple, very intuitive environment. So bye-bye learning curve. Hello productivity and increased ROI.

It's easy. (Even if you are the person who implements it.)

IBM Workplace software makes it easy for IT professionals. It lets all of your systems work together. No matter who made them or when you installed them. That's because all of your software and applications can be used in the context of IBM Workplace. And third parties can quickly assemble new value-added components and applications that can be integrated into your IBM Workplace solution. Making for friendly relations between both new and legacy systems. And freeing IT professionals from the hassle of managing those disparate systems.

Your industry is different. So is your IBM Workplace solution.

In addition to our unique IBM products and technologies, we offer industry-specific solutions. So whether you work in banking, healthcare, government or any other industry with very specialized needs, we have an IBM Workplace solution designed just for you. And for your specific job function.



Volkswagen needed to maximize the efficiency of every stage of their order-to-delivery cycle in order to reduce their costs and speed delivery of new vehicles to their customers.

With IBM Workplace, Volkswagen employees were finally able to spend less time searching for and analyzing information and more time actually making decisions.

The result? A 20% increase in procurement staff productivity.

Middleware is Everywhere.

Learn more about IBM Workplace.

Visit ibm.com/software/workplace or call an IBM rep at 1 800 426-2255.

© Copyright IBM Corporation, 2005. All rights reserved. IBM, the IBM logo and Workplace are trademarks of IBM Corporation in the United States, other countries, or both. This information is provided "as is" without warranty of any kind, express or implied, and is based on IBM's current product plans and strategy, which are subject to change by IBM without notice. IBM shall not be responsible for any damages arising out of the use of, or otherwise related to, this document. Nothing contained in this document is intended to nor shall have the effect of creating any warranties or representations from IBM (or its suppliers or licensors), or altering the terms and conditions of the applicable license agreement governing the use of IBM software.

G210-2249

