



## IBM Information Server version 8.0: Managing business metadata

---

### Highlights

---

- **Enable business users to participate in metadata-driven integration, for high productivity and flexibility**
- **Enable business users to manage business metadata**
- **Align efforts of IT with the goals of the business by enabling the creation and management of a corporate vocabulary**
- **Tailor the glossary to meet the specific needs of your users**
- **Enable multiple business users with intuitive Web clients, for zero-administration, no-hassle rollout**

### Take control of business metadata

An IBM survey of CEOs found that organizations that are highly effective at driving information integration are five times more likely than other organizations to drive value creation (2006 IBM Global CEO Survey). Yet difficulties in understanding and interpreting data, determining what data is important, and then managing that information creates roadblocks as business and technical users attempt to collaborate for effective information integration.

IBM Information Server addresses these issues — providing breakthrough productivity and flexibility for integrating and enriching information — by enabling metadata-driven integration. Information Server - supports management, analysis and active sharing of metadata artifacts across a full range of integration activities and user roles.

Business metadata provides context to information technology assets, allowing business and technical users to share a common understanding of information assets. Information Server puts business users in control of business metadata by providing them with an easy-to-use, Web-based interface that enables authoring, management and sharing of critical business metadata.

Within Information Server, IBM WebSphere® Business Glossary helps you to create and manage a controlled vocabulary, enabling a common language between business and IT. This is a critical step in better aligning the efforts of the technologists with the goals of the business — a top priority for most CIOs.

## Benefit: Create a common vocabulary between business and technical users



Figure 1. Information Server helps to align the efforts of IT with the goals of the business by establishing a common business vocabulary

In addition to helping you build a controlled vocabulary, Information Server can help you to create corporate taxonomies or classification systems, which provide further business context. Once created, a corporate taxonomy can be used to browse the business glossary and define its structure. The business glossary also provides robust search functionality, providing both a simple and advanced search interface.

There is no one-size-fits-all business meta-model. For example, Company A might require a data sensitivity attribute, while Company B does not, but instead requires an authorized attribute. To accommodate this market reality, Information Server allows administrators to extend the application with custom attributes.

The Business Glossary functionality is delivered through an easy-to-use, easy-to-learn Web client that requires no administration.

### Information Server Business Glossary Features

- Web-based management of business terms and categories enables creation of a common vocabulary and business taxonomies for both business and technical users.
- Synonym functionality enables access to multiple versions of the truth.
- Preferred term functionality enables creation of a single version of the truth.

- Drill-down access to technical metadata enables users to view these technical artifacts with added business context.
- Live connection to the metadata server guarantees that the technical artifacts being described by the business terms and categories are always up to date.
- Custom attributes allow the administrator to extend business terms and business categories to customize for the unique needs of their enterprise.
- A customizable entry page enables the administrator to tailor application entry to the unique needs of the user community.
- Powerful search capability, with both a beginner and an advanced search interface, enables fast access to critical metadata artifacts.
- Assign and retrieve information relating to data stewardship enables users to quickly ascertain responsible-party information for all information assets.

**Business metadata: Critical to your success**

- Provides business context to information technology assets.
- Adds business meaning to artifacts created and managed by other IT applications.
- Helps to align IT efforts with business goals.

- Enables:
  - Defining a shared meaning of data
  - Establishing responsibility, accountability, and traceability
  - Governing access-sharing insights and experiences among users
- Empowers those who understand the meaning and importance of the information to the business to manage business metadata.

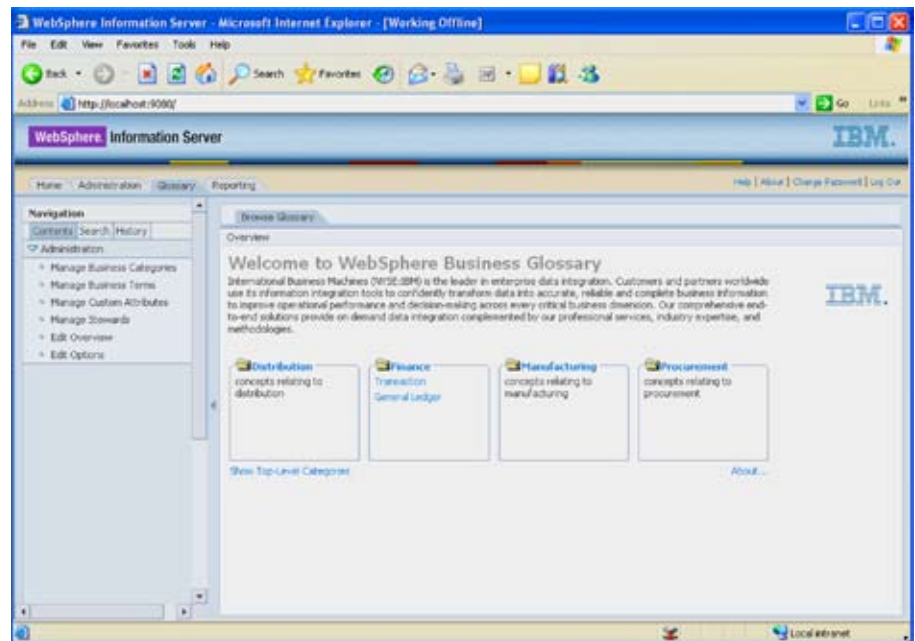


Figure 2. Information Server provides an approachable Web interface that allows business users to own and manage business metadata

## System requirements

WebSphere Business Glossary is an optional product module of IBM Information Server. It requires that WebSphere Metadata Server be installed.

On the client, WebSphere Business Glossary requires Microsoft Internet Explorer Version 6.0 or higher. For current, detailed hardware and software system requirements for Information Server product modules, visit:

[ibm.com/software/data/integration](http://ibm.com/software/data/integration).

## IBM Information Server

Organizations face an information challenge. Where is it? How do I get it when I need it in the form I need? What does it mean? What insight can I gain from it? Can I trust it? How do I control it? The challenges continue to grow if businesses cannot ensure that they have access to authoritative, consistent, timely and complete information.

IBM Information Server is a revolutionary new software platform that helps you derive more value from the complex, heterogeneous information spread across your systems. It enables your

organization to integrate disparate data and deliver trusted information wherever and whenever needed, in line and in context, to specific people, applications and processes. It helps business and IT personnel to collaborate to understand the meaning, structure and content of any type of information across any sources. It provides breakthrough productivity and performance for cleansing, transforming and moving this information consistently and securely throughout the enterprise so that it can be accessed and used in new ways to drive innovation, increase operational efficiency and lower risk.

## For more information

To learn more about IBM Information Server or information integration solutions from IBM, contact your IBM marketing representative or IBM Business Partner, or visit:

[ibm.com/software/data/integration](http://ibm.com/software/data/integration).



© Copyright IBM Corporation 2006

IBM Software Group  
Route 100  
Somers, NY 10589  
U.S.A.

Printed in the United States of America  
August 2006  
All Rights Reserved

IBM, the IBM logo, AIX, DataStage, ProfileStage, QualityStage, DB2, DB2 Universal database, IMS, iSeries, the On demand Business logo, WebSphere and z/OS are trademarks of International Business Machines Corporation in the United States, other countries, or both.

Java and all Java-based trademarks are trademarks Sun Microsystems, Inc. in the United States, other countries, or both. Linux is a registered trademark of Linus Torvalds in the United States, other countries, or both.

Microsoft and Windows are registered trademarks of Microsoft Corporation in the United States, other countries, or both.

UNIX is a registered trademark of The Open Group in the United States and other countries.

Other company, product or service names may be trademarks or service marks of others.

**TAKE BACK CONTROL WITH** **Information Management**