



DB2 Express 9

Highlights

- ***High-value, low-cost, production-ready***
- ***Developer friendly, and does not require a dedicated DBA***
- ***Fast path to reliable relational and XML data management***
- ***Unsurpassed support and service through DB2 Express 9***
- ***Comprehensive forum-based assistance through DB2 Express-C 9***

Cost-effective database platform— production ready, low maintenance

IBM DB2 Express 9, formerly codenamed 'viper', delivers a flexible, cost-effective data server for independent software vendors (ISVs) who want to grow revenue and reduce development costs. DB2 Express 9 can be deployed to build robust, on demand business applications ready for development and production at minimal cost. With DB2 Express 9, small and medium businesses, academic communities, and the IBM Business Partners who serve them can take steps to deploy solutions based on a service oriented architecture (SOA), unlocking the value of information assets.

Combining power, functionality and reliability with simplicity in installation and deployment, DB2 Express 9 can transform captive data into openly available information on demand throughout the enterprise. The market-leading innovations built into DB2 Express 9 offer the option to easily build solutions that integrate XML and relational data, maximize productivity of the system management team, and help managers reduce IT costs while improving service levels.

Industry-first hybrid relational and XML data server

DB2 Express 9 is the only hybrid data server optimized for managing both relational and XML data. It features new XML-specific storage management, indexing and optimization techniques that can dramatically improve XML performance and flexibility. DB2 Express seamlessly integrates XML with existing relational data, exploits both tabular and hierarchical data models, and provides the flexibility of using both SQL and XQuery in your application. Developers can leverage existing skills since they can use familiar SQL or XQuery to access any DB2 data and thus spend less time writing code to create applications to access relational data or XML epositories. With DB2 9, for the first time, XML data is cost effective and enables greater business insight faster at a lower cost.

In addition to offering cost savings through optimization technologies like automatic memory and storage management, DB2 Express 9 offers strong value toward total business resilience – security and privacy, availability, reliability, scalability, disaster protection, compliance and governance.

DB2 Express 9 comes with self-managing, self-tuning, self-correcting and self-healing properties enabled by default. These self-maintaining features optimize database performance and eliminate the need for a dedicated database administrator (DBA) by minimizing system maintenance requirements.

Unique capability for the SAP applications

DB2 Express 9 continues to provide specific improvements for the SAP environment. You can help reduce deployment time by installing a fully tuned and configured DB2 Express 9 as part of the SAP installation process. New SAP-specific optimizations and enhanced SAP monitoring and diagnostics tools help increase SAP performance.

Support for ease of development

DB2 Express 9 delivers unprecedented application performance and cost savings for development, enabling greater business insight faster, at lower cost. For example, DB2 Express 9 supports a full range of APIs, including Microsoft .NET Framework and Java™ 2 Platform, Enterprise Edition (J2EE) technology. The data server includes a complete set of tools that integrate into the Microsoft Visual Studio 2003 and Visual Studio 2005. NET development environment, simplifying the development of DB2 server-side logic such as stored procedures and structured query language (SQL) functions.

DB2 Express 9 also includes a newly architected set of Java drivers and includes tools for building multi-tier applications using J2EE application servers. These drivers eliminate the need to acquire additional technologies to develop applications written in the Java programming language, accelerating time to value and reducing time to market.

For PHP developers, DB2 is seamlessly integrated into Zend Core for IBM an easy-to-install PHP development and production environment. Zend delivers a rapid development and deployment foundation for database-driven applications. For Ruby on Rails programmers, DB2 Express 9 makes available IBM developed Ruby driver and Rails adapter that make building robust scalable Ruby on Rails applications possible.

DB2 Express easily and transparently embeds into IBM Business Partner applications. The product's "silent install" capability allows IBM Business Partners to quickly and easily resell DB2 Express 9 as part of their targeted, market-ready solutions. In addition, you can now have many DB2 installations reside on the same system working independently within your application.

Offering further support for development is the DB2 Developer Workbench, a comprehensive development environment for creating, editing, debugging, deploying and testing DB2 stored procedures and user-defined functions. You can also use Developer Workbench to develop SQLJ applications, and to create, edit and run SQL statements and XML queries.

Optional Features for DB2 Express 9

Based on your requirements, consider these optional features:

- **DB2 pureXML™ for Express Edition:**
This feature allows you to perform many common database operations with XML data, such as creating tables with XML data type and inserting, updating, or deleting XML documents. All the management and development tools come equipped for working with XML data.
- **DB2 High Availability for Express Edition:** The DB2 High Availability feature allows 24x7 availability required by on demand businesses running critical enterprise applications. This feature contains the High Availability Disaster Recovery (HADR), Online Reorganization and IBM Tivoli® System Automation for Multiplatform components.

- DB2 Performance Optimization for Express Edition: DB2 Performance Optimization combines the functionality of materialized query tables (MQT), multidimensional clustering (MDC) and query parallelism. This feature provides performance optimizations for complex queries, data clustering for OLAP applications, and high performance for machines with multiple processors.

- DB2 Workload Management for Express Edition: DB2 Workload Management leverages Connection Concentrator in conjunction with either Query Patroller (QP) or the DB2 governor to provide a more proactive fail-safe workload environment for your customers.

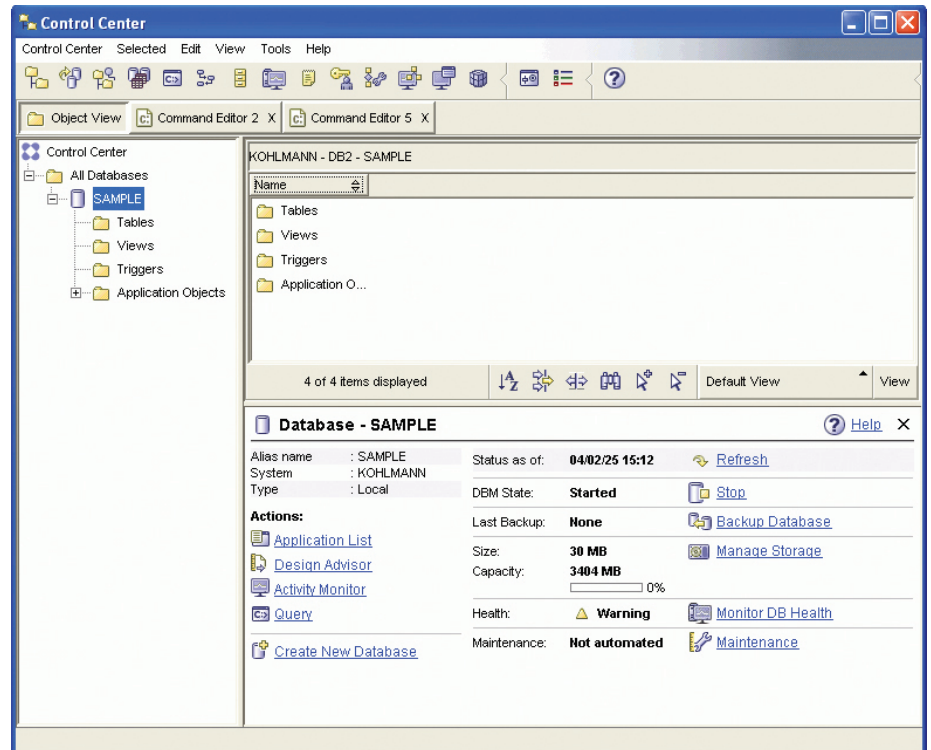
No-charge data server for the community

IBM DB2 Express-C 9 is a version of DB2 Express Edition designed for the community. It is a no-charge data server for use in development and deployment. It provides the same database server features, API support and system limits as DB2 Express 9 in a smaller package.

IBM Business Partners can register for no-charge DB2 Express-C 9 redistribution with their products and offerings. Should you require a DB2 data server with more advanced features and 7x24 support from IBM, DB2 Express 9 can be seamlessly upgraded to DB2 Express 9, Workgroup

and Enterprise Server Editions without modifying your database or your application. A new forum, hosted and monitored by DB2 experts, is available to provide free, community-based assistance for DB2 Express-C 9. For more information refer to:

ibm.com/db2/express



IBM DB2 UDB Express optimizes system performance by updating database statistics and reorganizing your data when necessary. It also helps to secure your data with automatic database backups.

Information on demand infrastructure

How well an organization performs is directly related to how quickly it can act on windows of opportunity. Information on demand is about getting the right information to the right people or processes at the right time to take advantage of these opportunities.

Information on demand requires a solid foundation, and the infrastructure that supports it must be flexible enough to meet varying demands. Given that information cost and IT complexity are directly related to this flexibility, DB2 Express 9 provides an entry point to enable information on demand for all organizations. IBM is strongly committed to working with partners and clients to make the information on demand vision a reality within small and medium enterprises in all industries.

As part of its commitment to DB2 Express, IBM has enabled unprecedented integration between DB2 Express 9 and IBM Express Portfolio. This allows SMB customers to leverage a wide range of affordably priced IBM solutions to build resilient information on demand solutions. The complementary IBM Express offerings that support DB2 Express include:

- IBM WebSphere Application Server - Express
- IBM WebSphere Commerce - Express
- IBM Workplace Services Express
- IBM Lotus Domino® Collaboration - Express
- IBM Express Runtime

Key prerequisites

Hardware requirements:

- x86 systems with 32-bit Microsoft® Windows® or Linux®: Intel® Pentium™4, Intel Xeon™, AMD Athlon AMD Opteron processors, or higher
- x86-64 systems with 64-bit Windows or Linux: Systems with AMD64 or Intel EM64T processors
- IBM System p™ and IBM System i™ systems running Linux: IBM POWER4™ and IBM POWER5™ processors

Memory requirements:

Recommended minimum memory is 256 MB for Microsoft Windows and Linux platforms. Additional memory might be required to handle heavy workloads and large numbers of users.

Disk space requirements:

Recommended minimum disk space for a typical installation is 450 MB. The actual space required might vary depending on the specific file system and the components installed.

Software requirements:

- Linux: Red Hat Enterprise Linux (RHEL) 4 and SUSE LINUX Enterprise Server (SLES) 9
- Support for Sun Solaris 10 x86-64 platform will be available at a later date
- Windows: 32-bit and 64-bit Windows XP Professional Edition, Server 2003, Standard Server, Enterprise Server and Datacenter Editions

The hardware and software requirements information for DB2 products and components is frequently updated. For the most current information, refer to:

ibm.com/software/data/db2/udb/sysreqs.html

Why IBM?

With easy terms and conditions, DB2 Express 9 is priced to enhance your competitiveness and profit margins in both initial license sales and ongoing support. IBM will continue to provide IBM Business Partners with industry-leading technical enablement, marketing and pre-sales support worldwide, including visibility to IBM sales and service representatives. Support for you as a Business Partner includes:

- The opportunity to use the Built on IBM Express Portfolio™ emblem when you market your solution or service for mid-market customers if it includes IBM Express offerings such as DB2 Express 9. You can use the emblem on your Web site, marketing campaign collateral, and in advertising to leverage IBM's US\$200 million investment in Express Portfolio demand generation.
- The opportunity to raise the visibility of your solutions and services for mid-market clients by nominating them to be presented on the award-winning IBM Express Portfolio Web site. An extensive IBM demand generation campaign is driving traffic to this site. Make it work for you.

For more information on the Built on IBM Express Portfolio initiative or to nominate your offering, visit:

ibm.com/partnerworld/pwhome.nsf/weblook/pub_strategies_smb_express_built.html

All IBM Business Partners may take advantage of IBM's comprehensive enablement and support resources for building skills, applications and solutions. Leverage these resources by registering with the Virtual Innovation Center (VIC), an online knowledge portal providing access to the complete IBM enablement portfolio. Examples of the resources available on the VIC include:

- Online sales and technical education with e-mentoring
- Porting and migration assistance
- Live multilingual 24x7 technical support
- Discussion forums

For more information

Please contact your IBM representative or IBM Business Partner, or visit our Web site at:

ibm.com/db2/express



© Copyright IBM Corporation 2006

IBM Corporation
Silicon Valley Laboratory
555 Bailey Avenue
San Jose, CA 95141

Produced in the United States of America
08-06

All Rights Reserved

DB2, Domino, Express Portfolio, IBM, the IBM logo, System i, Lotus, the On Demand Business logo, System p, POWER4, POWER5, Tivoli and WebSphere are trademarks of International Business Machines Corporation in the United States, other countries or both.

Intel, Pentium and Xeon are trademarks of Intel Corporation in the United States, other countries or both.

Java and all Java-based trademarks are trademarks of Sun Microsystems, Inc., in the United States, other countries or both.

Linux is a registered trademark of Linus Torvalds in the United States, other countries or both.

Microsoft and Windows are trademarks of Microsoft Corporation in the United States, other countries or both.

Other company, product and service names may be trademarks or service marks of others.

References in this publication to IBM products or services do not imply that IBM intends to make them available in all countries in which IBM operates.

GC18-7910-05