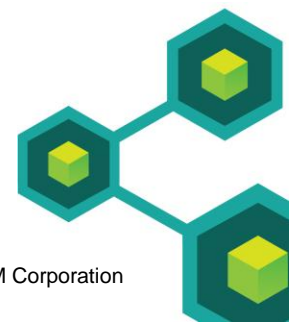




# What's New in IBM Cognos Insight V10.2.0.1



## What are business users looking to do with their data?

*Executives, managers and analysts are confronted with business challenges which require an in-depth view of multiple sets of data in a way that is meaningful to their needs.*



- Want to react quickly to changing business scenarios
- Want to explore, analyse and visualize with ease
- Want independence with minimal assistance
- Want flexible and agile analysis tools ready to use



## What are business users doing today with managed data?

*Executives, managers and analysts receive reports and spreadsheets derived from key metrics of business operations but are limited in their ability to find answers to specific business questions for effective decision making.*



- ❑ Receiving top down analysis reports focused on big picture
- ❑ Using cumbersome and difficult to maintain spreadsheets

### Drawbacks

- ❑ Struggle to combine with personal or other departmental data
- ❑ Lack of data interactivity
- ❑ Unable to present custom views of data in a meaningful way



## Cognos Insight brings personal data analysis to the business user

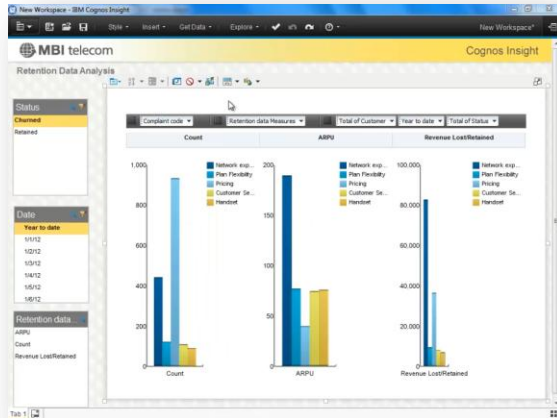
*Cognos Insight is a desktop data analysis & planning tool designed to support business users, providing an environment to create meaningful dashboards and scenario models to realize business potential and seize new opportunities.*



- ❑ Quick self service dashboard design and planning environment
- ❑ Fast in-memory technology for multidimensional views of data
- ❑ Flexible canvas based widgets with rich visualizations and cross tab use
- ❑ Easy to get started, low cost of ownership, no assistance needed
- ❑ Enterprise ready to extend into broader BI and PM applications

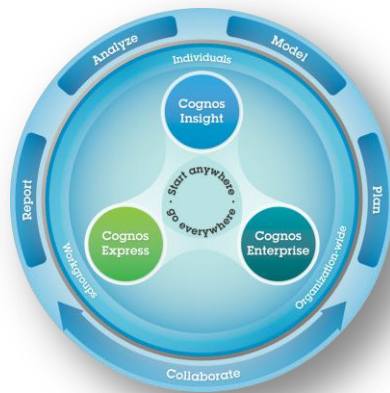


# What are the benefits of Cognos Insight?



## Cognos Insight on the desktop

- Flexible independence to quickly analyze data
- No need to be a power user
- Perfect tool for small team or workgroup collaboration
- Low cost of ownership
- You can begin your analytics journey right away



## Connected to a Cognos server...

- Security, access control
- Governed deployment, standardization
- Import Cognos and SPSS data
- Common capabilities
- Solid growth path

# IBM Cognos family

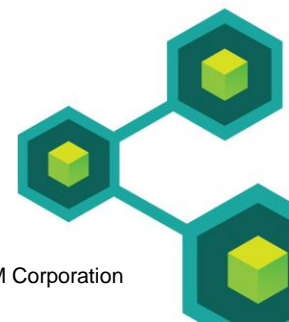
Right-sized set of capabilities to fit the business need

|  | Cognos Insight | Cognos Express | Cognos Enterprise |
|--|----------------|----------------|-------------------|
| Dashboards                                   | ✓              | ✓              | ✓                 |
| Analysis                                     | ✓              | ✓              | ✓                 |
| What-if Scenario Modeling                    | ✓              | ✓              | ✓                 |
| Planning and Budgeting                       | ✓              | ✓              | ✓                 |
| Production Reports                           |                | ✓              | ✓                 |
| Microsoft Office Integration                 |                | ✓              | ✓                 |
| Enterprise-wide Collaboration                |                |                | ✓                 |
| Scorecarding                                 |                |                | ✓                 |
| <b><i>Delivered through:</i></b>             |                |                |                   |
| Web  |                | ✓              | ✓                 |
| Desktop                                      | ✓              | ✓              | ✓                 |
| Mobile devices                               |                | ✓              | ✓                 |
| Applications & Business Processes (embedded) |                |                | ✓                 |





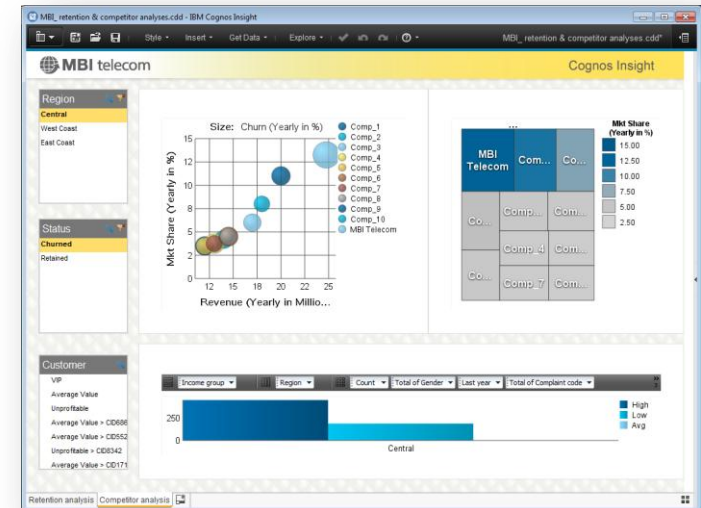
# New Features and Benefits IBM Cognos Insight V10.2.0.1



## Cognos Insight V10.2.0.1 - New features presented

*Cognos Insight V10.2.0.1 is a 'fix pack' which focuses on **performance and quality**. In addition, this release also introduces a number of new enhancements. Enjoy increased speed of analysis and visualization **rendering**, usability improvements and **new workspace options**, all of which make using Cognos Insight easier and more effective for dashboard design and data analysis.*

- Exciting new visualizations and **charting options**
  - new bubble and scatter charts
  - new crosstab and chart Split View options
  - improved performance and visual quality
  - automatic Adjustment of Scale on charts
- Enhanced **dashboard creation and analysis**
  - associative filter preferences
  - new background theme
  - gridlines for widget placement
  - default preferences for drill behavior
  - data import and usability features within the Content Pane
- Extended support for MS Access, Netezza and Teradata
- Automatic check for Cognos Insight software updates
- Non-Administrator Installation of Cognos Insight Personal Edition

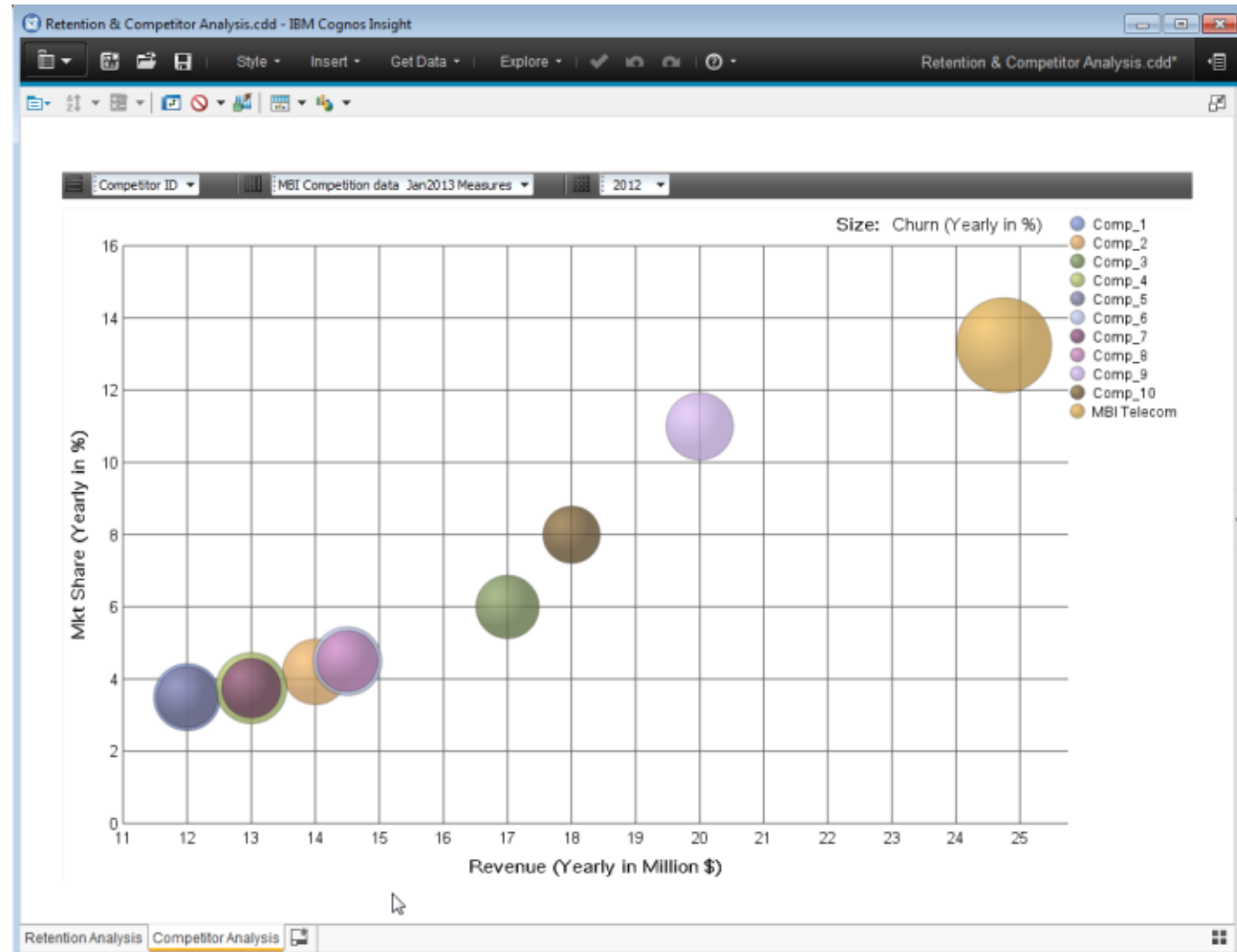




# New visualization and charting options

## Bubble chart

- ❑ Represent three measures on a chart using this new visualization
- ❑ Useful for data where values differ in magnitude



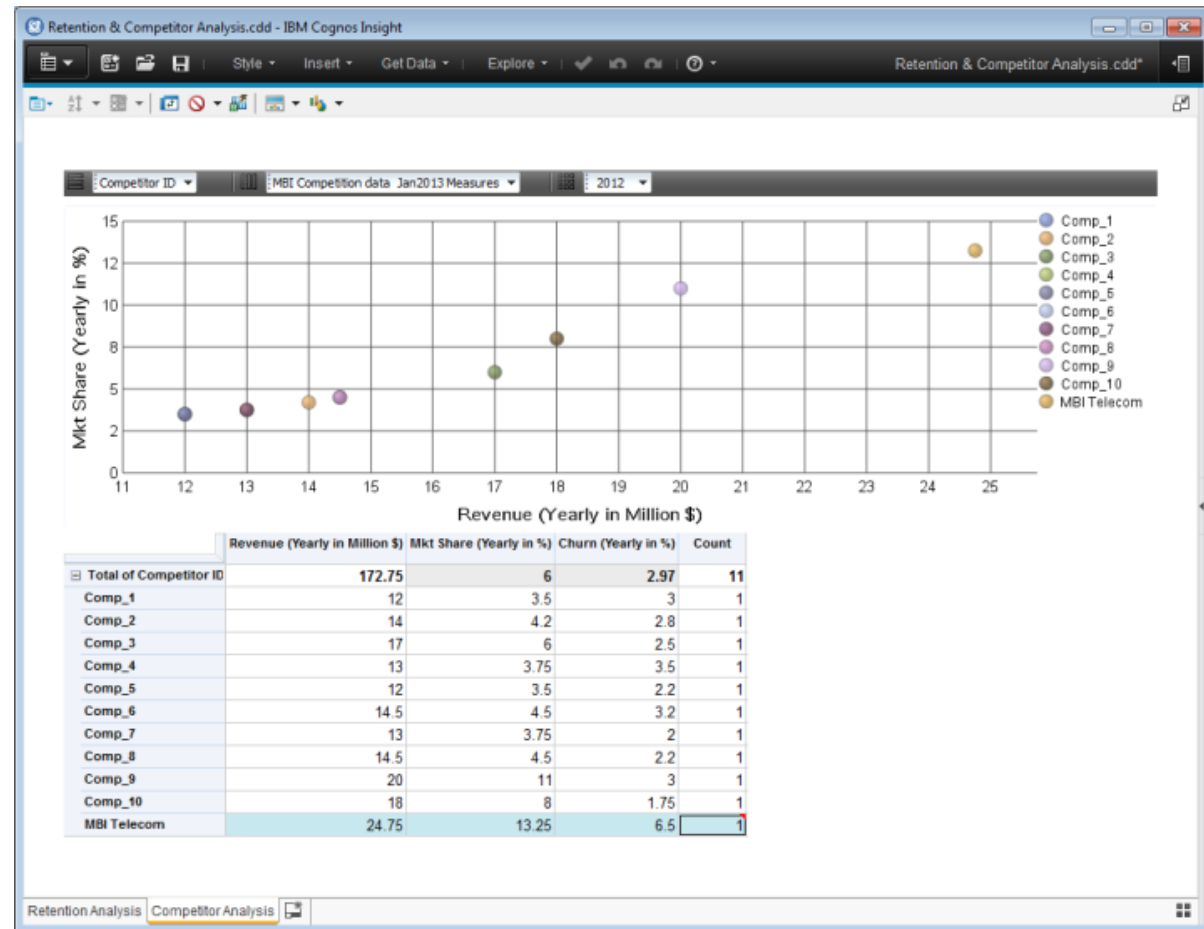
# New visualization and charting options

## Scatter chart

- Similar to the bubble chart, applies to two measures represented as points within the chart

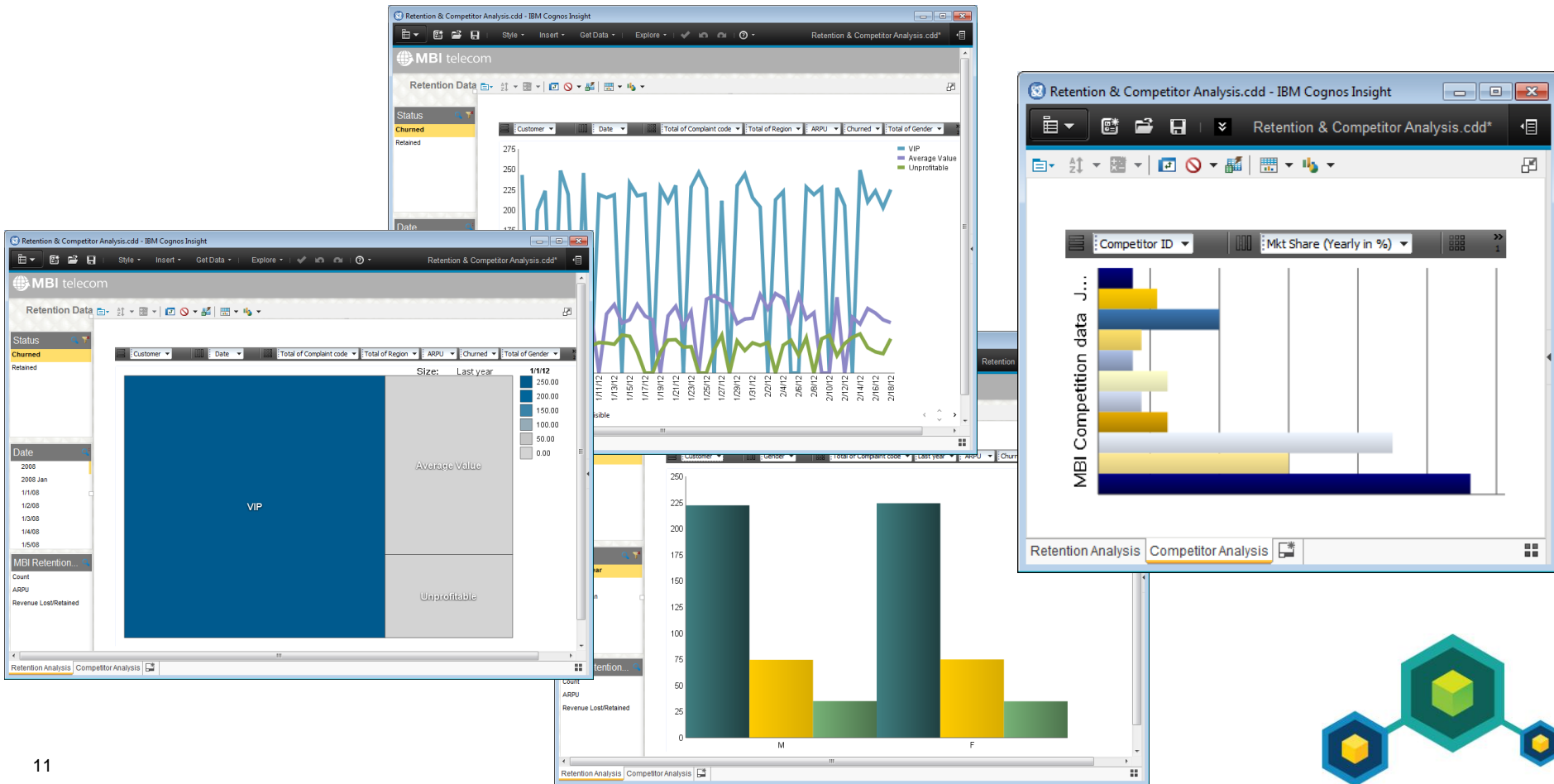
## Personalized chart placement

- Choose whether a visualization is placed above the supporting data or beneath the data when adding a split view to the workspace. Display of the just the chart or just the crosstab is still possible as in past releases.



# New visualization and charting options

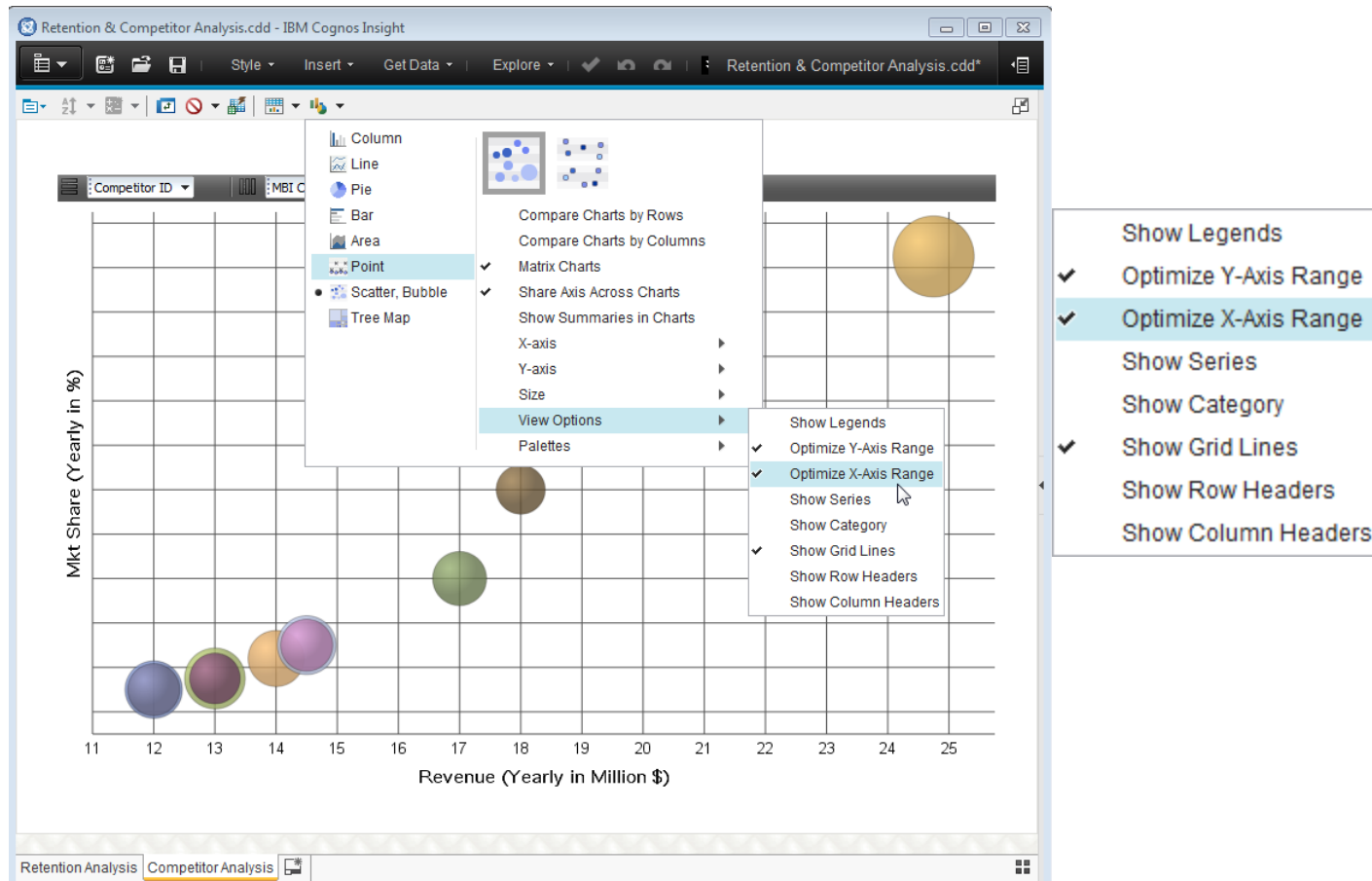
- ❑ Improved rendering performance of selected and commonly used charts for better data analysis
- ❑ Enhancement of colors, brightness and sharpness.



# New visualization and charting options

## Optimization of Chart Axes

- ❑ Use the data that is represented on the chart to determine the range of values that are shown on the x-axis and y-axis
- ❑ Useful when data needs to be plotted within a very small range of values, allowing for a more focused view of the data



# Enhanced Dashboard Creation and Analysis

## Personal preferences

- ❑ Individually set whether the double-click action on a cell performs write-back or drill to the next level of detail. This may be set as a User preference or at the workspace level in order to define the experience for consumers of the workspace (item. 1)
  
- ❑ Set the default dimension level you wish to view. Allows users to start their analysis at the preferred level of detail when new objects are created on the workspace (item. 2)

### Set Preferences

General System

Specify your general preferences.

- Show added visual cues for improved accessibility
- Show the Getting Started Page at startup
- Detect hierarchies during import

Crosstabs

- Do not synchronize new views

Default action for new workspaces when double-clicking on a cell:

- Edit
- Drill Down

Initial view of dimensions:

- Collapse all levels
- Expand the first level
- Expand all levels



# Extended Support for MS Access, Netezza and Teradata

- ❑ Access Teradata, Netezza and MS Access databases when importing data using the Query Builder interface in Cognos Insight (fig. 1)
- ❑ The contents of these databases can now be viewed and selected without writing SQL statements

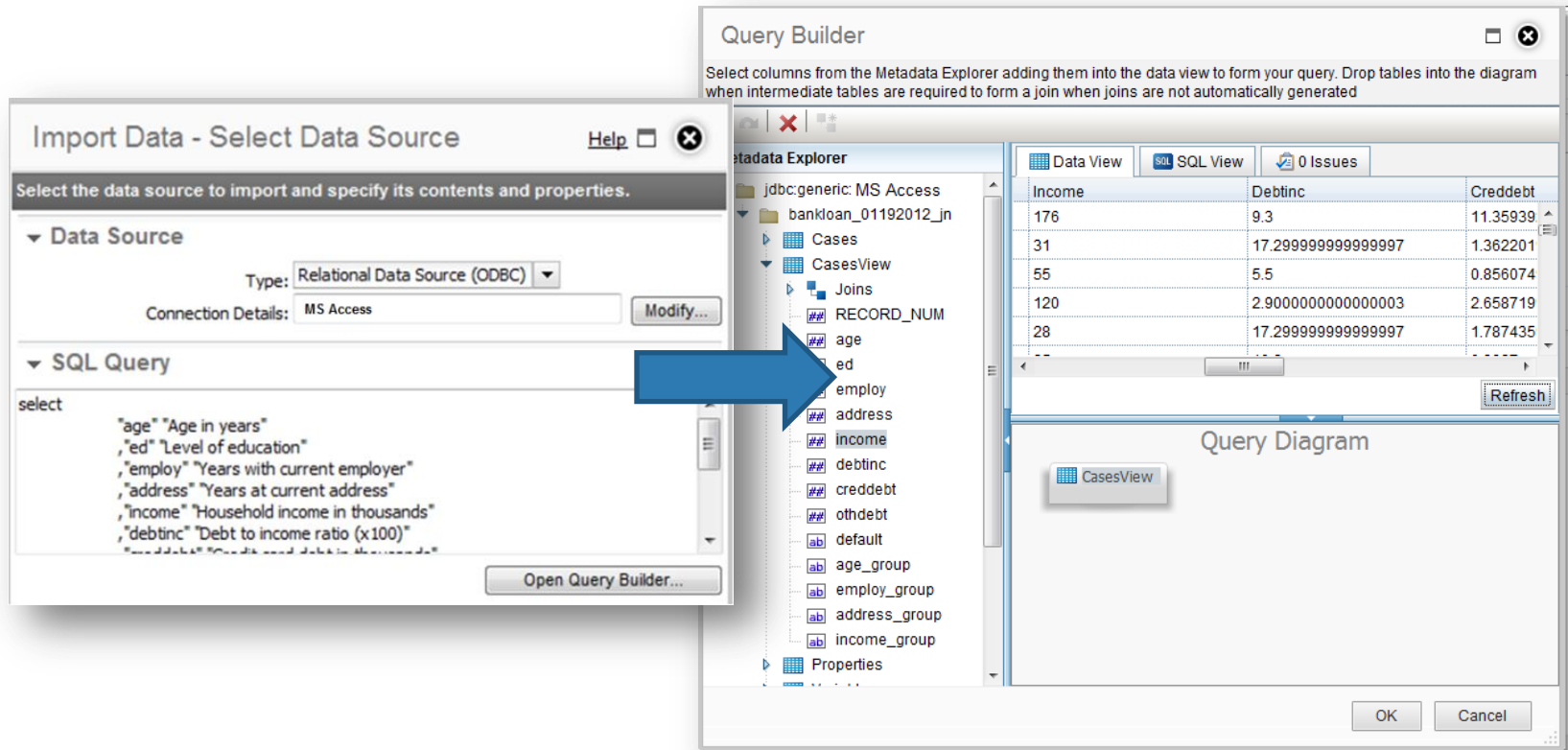


Fig. 1



# Automatically Check for Cognos Insight Software Updates

- ❑ Set preferences to automatically be informed of Cognos Insight software updates from IBM (fig.1)
- ❑ Applies to Cognos Insight Standard Edition and Cognos Insight Personal Edition
- ❑ Tool tip icons indicate an update is available (fig.1)
- ❑ Users can be sure they are running the latest released version (fig. 2)
- ❑ Users specify whether to be notified of new versions of Cognos Insight or automatically download and install them as soon as they are released

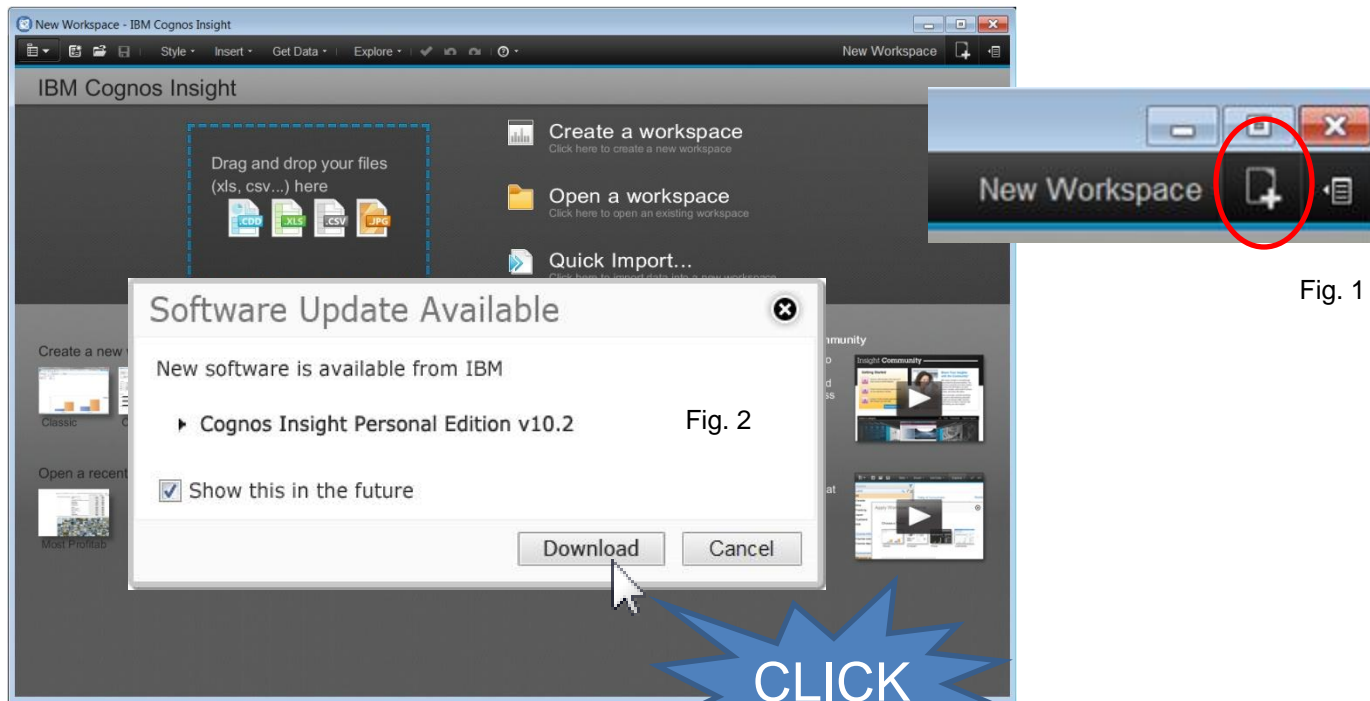


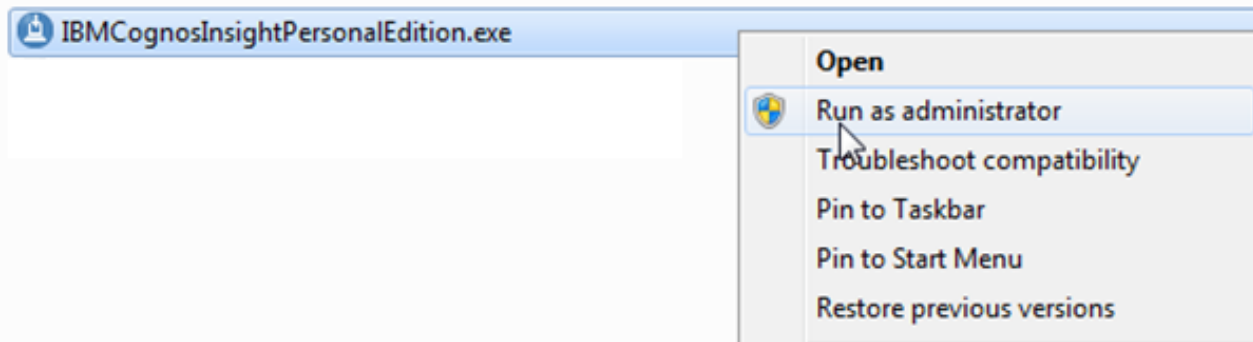
Fig. 1

Fig. 2

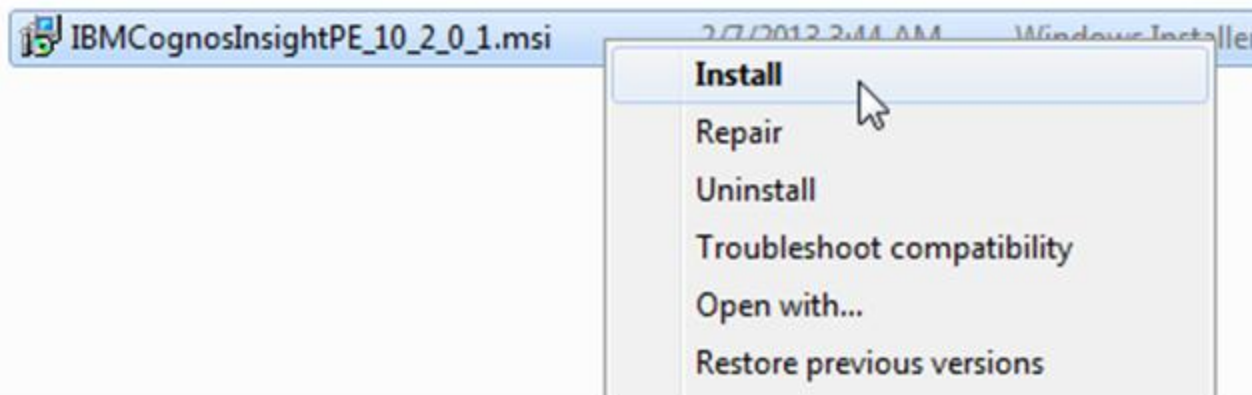


# Non-Administrator Installation of Cognos Insight Personal Edition

- ❑ Users no longer have to be administrators on the machine where they are installing Cognos Insight or run the installation as an administrator (fig. 2)
- ❑ The new .msi file format reduces the size of the install file (fig.2)



Previous versions



New versions

Fig. 2





# IBM Cognos Insight Capability Comparison

|  | Personal Edition       | Standard Edition | Licensed with Cognos Express or Cognos Enterprise Roles |
|--|------------------------|------------------|---|
| Commercial use and/or file sharing permitted   | No                     | Yes              | Yes   |
| Import data from xls/csv   | Yes                    | Yes              | Yes   |
| Import data from databases   | No                     | Yes              | Yes   |
| Import from pre-built Cognos BI reports or Framework Manager packages                | No                     | Yes (1)          | Yes   |
| Save work locally  | Yes                    | Yes              | Yes   |
| Share results with other Cognos Insight users  | No                     | Yes              | Yes   |
| Publish data and UI to a Cognos Server   | No                     | No               | Yes (2)   |
| Reuse and extend published content with Web, Mobile and other server user interfaces | No                     | No               | Yes   |
| Operating systems supported  | Windows                | Windows          | Windows   |
| Subscription and support   | AnalyticsZone.com only | Yes              | Yes   |
| Cost   | Free                   | \$515 USD        | <u>Included</u> with various roles                      |

Note: Prices Subject to Change. Cognos Enterprise is Cognos Insight, BI and TM1. Cognos Express may not bundle the most recent version of Cognos Insight.

Publishing to a Cognos server requires at least one appropriate Cognos Administrator role.

- (1) Requires the user to also be licensed to access reports and packages from a Cognos BI server
- (2) Some tasks require administrative privileges – see Cognos Insight Packaging and Pricing slide for details



# Thank You

