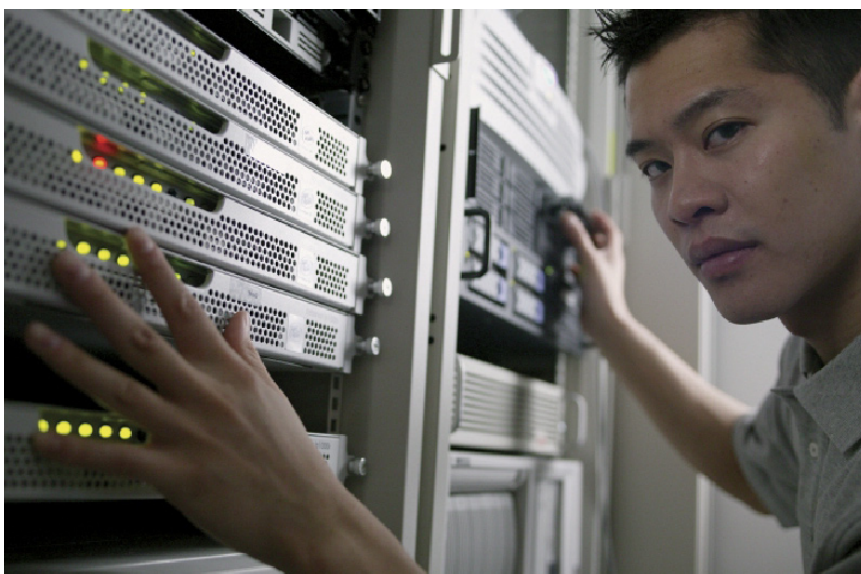


## Information Management Software Services IBM Industry Models Migration



reduction in costs by eliminating time spent on syncing between tools such as Irwin and MMM.

### Benefits to your business by migrating to EME:

- Increased capability to expand and/or develop analytics capabilities
- Established corporate standards that both business and IT can use
- Accelerated time to implement key strategic business initiatives
- Well-established comprehensive analytical reporting framework
- Reduced complexity in Data Warehouse deployments

### Highlights

- ***Hands-on mentoring by an IBM Industry Model expert***
- ***Customized migration process using best practices, assets, tools and a proven methodology***
- ***Reduced risk and downtime by utilizing our highly specialized migration experts***

In today's competitive IT market, leading organizations continue to evolve their IT infrastructure, applications and hardware to reduce costs and remain competitive. Because of this climate, the need for optimized processing and tooling is key.

The Enterprise Model Enabler (EME) framework to support Industry Models allows greater scrutiny of your model content thereby leading to an increased ROI and competitiveness. With the help of IBM Information Management Software Services, customers have been able to successfully migrate their Industry Model(s) to the InfoSphere Data Architect (IDA)/EME environment allowing for the availability of the models in various communities within your organization. Also, because the EME is integrated into the data modeling tool IDA, you will see a

### Activities & Deliverables:

Our Migration Service begins with a pre-engagement assessment to determine how you are using Industry Models and what your current environment looks like. Based on this assessment we will determine whether the migration is a viable option and if so which option will be the right choice for your environment. From this assessment a migration option is chosen and we begin the migration process. The assessment and migration process is led by an IBM consultant, following an IBM developed process. The consultant will leverage these best practices along with accelerator tooling to migrate customizations from your existing models, and incorporate those into the new model release.

There are two different approaches that can be taken to complete a migration implementation:

### ***Harvest Support***

Includes hands on mentoring in preparing and executing the move of your models.

### ***Harvest Enterprise***

Includes all activities in Harvest Support, plus assistance with the customization of your model elements to become part of your Enterprise Information Architecture.

The duration for this type of an initiative varies on the customer's environment and the number of models to be migrated, but is typically anywhere from 12-16 weeks. A better duration estimate will be provided after the pre-engagement assessment.

At the end of this engagement, the customer will have their models migration complete, in addition to receiving the engagement summary report deliverable from the IBM consultants delivering this offering.

### **Engage Today**

With a worldwide team of highly trained services professionals, IBM Information Management Services can help build your solution with confidence while assuring that the business needs and expectations of your organization are met. Our Industry Models experts are ready to assist your organization with:

- Establishing project goals and expectations
- Maximizing the return on your investment
- Reducing project delivery times, complexity and risk through the delivery of proven offerings
- Reducing total cost of ownership

Available for whatever the delivery approach your business requires, the IBM Information Management Services team will produce results quickly, and will help to put your project on the road to success.

### **For More Information**

For more information regarding this or any services offerings, please visit the IBM Information Management Services website at:

**[ibm.com/software/data/services](http://ibm.com/software/data/services)**



© Copyright IBM Corporation 2009

IBM Corporation  
Software Group  
1133 Westchester Avenue  
White Plains, NY 10604  
U.S.A.

Published in Canada  
10-29  
All Rights Reserved

The IBM, the IBM logo, e-business software, DB2, and Informix, are trademarks or registered trademarks of International Business Machines Corporation in the United States, other countries, or both.

Other company, product, and service names may be trademarks or service marks of others.

References in this publication to IBM products or services do not imply that IBM intends to make them available in all countries in which IBM operates.