

InfoSphereTM software

Trusted Information



Information Management software

The IBM InfoSphere Suite

Norbert Eschle IBM
Henry Cook IBM

We support activities at every stage of the life cycle, the end to end process and governance



- **Activities**
 - **Investigation**
 - **Requirements gathering**
 - **Design time**
 - Investigate best practice
 - 'Think Time' to consider alternatives
 - Collaboration and gaining agreement
 - Architect solution
 - **Develop**
 - **Test**
 - **Design Data Structures**
 - Logical / Physical
 - Agree
 - Create definition
 - Add
 - Modify
 - **Changing and maintaining**
- **Acquire**
 - **Profile and understand**
 - Agree format, content and meaning
 - **Transform**
 - **Quality Assure / cleanse**
 - **Publish, Access and maintain metadata**
 - **Establish and Maintain Master Data**
 - **Load and Store**
 - **Process**
 - Analyse,
 - Query
 - Update
 - **Backup and recover**
 - **Capacity plan and manage performance**
 - **Archive and retire**
 - **Publish and Distribute results**

IBM speeds the overall process to maximise business benefits. Accelerating time to results, reducing time, effort and cost

Traditional Life Cycle Time Scales



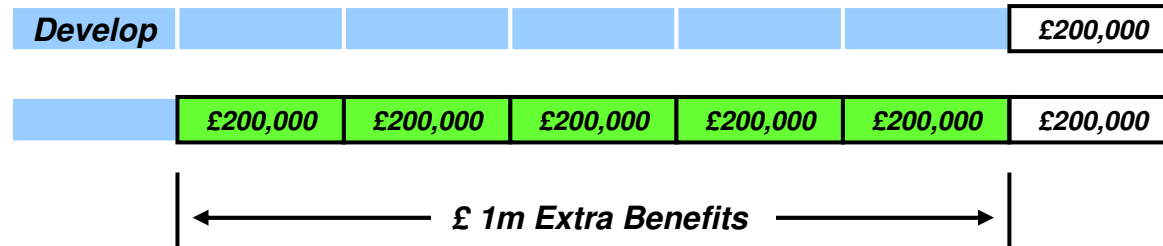
Accelerated Life Cycle Time Scales



Design Data	Acquire	Transform	Quality Assure	Store/Process	Metadata / MDM	Publish
Design data <ul style="list-style-type: none"> ▪ Predefined data models ▪ Proven in the field, less risk, less design time ▪ Support for fast customisation ▪ Supports changing hierarchies 	Data Acquisition <ul style="list-style-type: none"> ▪ Support for interfaces to all common s/w h/w ▪ 100's of proven data acquisition connectors ▪ SOA support ▪ Support for common packages e.g. Peoplesoft ▪ Support for large range of both IBM and non IBM systems ▪ Federated access multiple systems ▪ Change Data Capture Oracle / MicroSoft etc 	Transformation <ul style="list-style-type: none"> ▪ Most mature and comprehensive ETL tooling ▪ 1000's of prebuilt transformations ▪ 'Fast Track' process to enable collaboration ▪ Graphic design tools for ease of use ▪ Parallel processing to avoid processing bottlenecks ▪ Ease of re-use of components 	Data Quality <ul style="list-style-type: none"> ▪ Most mature and comprehensive data quality tools ▪ 100's of data quality tests and routines ▪ Specific support for Data Quality (not just ETL adaptation) ▪ Sophisticated pattern matching ▪ Numeric and non-numeric data ▪ Quality reporting ▪ Support for correction processes 	Central Store and Marts <ul style="list-style-type: none"> ▪ Market leading Data Warehouse capability ▪ Full support for 'massively parallel processing' for true scalability ▪ Highly cost efficient ▪ Workload management for supporting many users ▪ Comprehensive Data mining and OLAP support ▪ Appliance, ease of install 	Metadata <ul style="list-style-type: none"> ▪ Comprehensive support for business and technical data ▪ Business Glossary mechanism for publishing metadata ▪ Dedicated metadata server support Master Data <ul style="list-style-type: none"> ▪ Predefined master data model ▪ Support for change ▪ Dedicated server 	Presentation <ul style="list-style-type: none"> ▪ Dashboarding ▪ Scorecarding ▪ Interfaces to all common s/w h/w ▪ Predefined templates and frameworks (blueprints) ▪ Mobile support ▪ Collaboration ▪ Easy report definition, generation ▪ Access to multiple heterogeneous sources

Lower 'Time to Value' means greater overall benefit

Requirement worth £200,000 per month brought in 5 months earlier



Meeting more requirements in the same time means more benefits

Priority	Requirement	Benefit
#1	Requirement	£500,000
#2	Requirement	£1,200,000
#3	Requirement	£2,300,000
#4	Requirement	£100,000
<hr/>		
#5	Requirement	£1,500,000
#6	Requirement	£3,000,000
#7	Requirement	£400,000
#8	Requirement	£1,000,000
#9	Requirement	£1,000,000
#10	Requirement	£2,000,000

↑
£ 8.9m Extra benefits by being able to tackle more requirements
↓

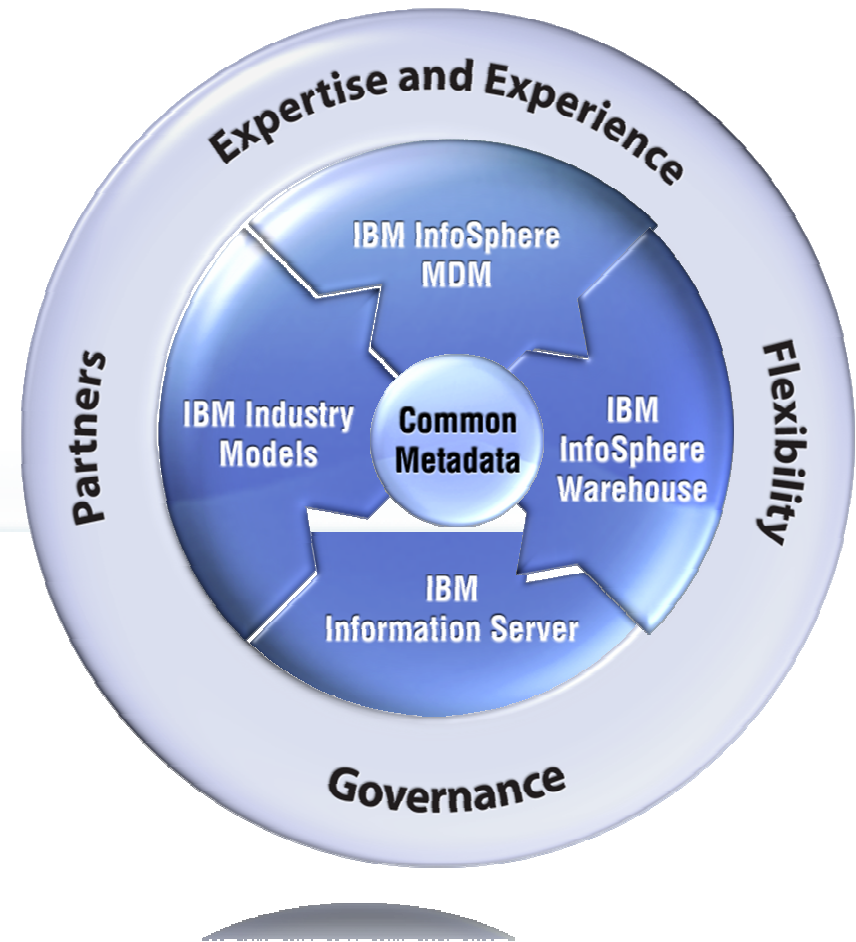
Note: Requirements are prioritised by value and ease of implementation. If we can do requirement more easily then we may be able re-prioritise it.

Typical savings through use of Information Server

- **Industry and experience reflects that business as usual IT Projects:**
 - Can take up to 10x as long with individual tooling

- **Unified Information Server Platform Benefits:**

• Decreased risk by	53%
• Improved business alignment	83%
• Improve time to value by	75%
• Reduce project staffing by	90%



Source: Customer Case Studies, Industry Analyst Reports

Time and effort savings using InfoSphere Balanced Warehouse

• Before Balanced Warehouse		• With Balanced Warehouse
• Design	4	• <u>Install</u> <u>1 day</u>
• Build	6	
• Functional Test	3	
• Performance Test	3	
• Tune	3	
• UAT	1	
• <u>Total Weeks</u>	<u>20</u>	

- *Corresponding reduction in overall effort and risk*
- *Concentrate on business goals*
- *Takes machine issues 'off the critical path'*

InfoSphere Portfolio

Industry Frameworks



Banking



Retail

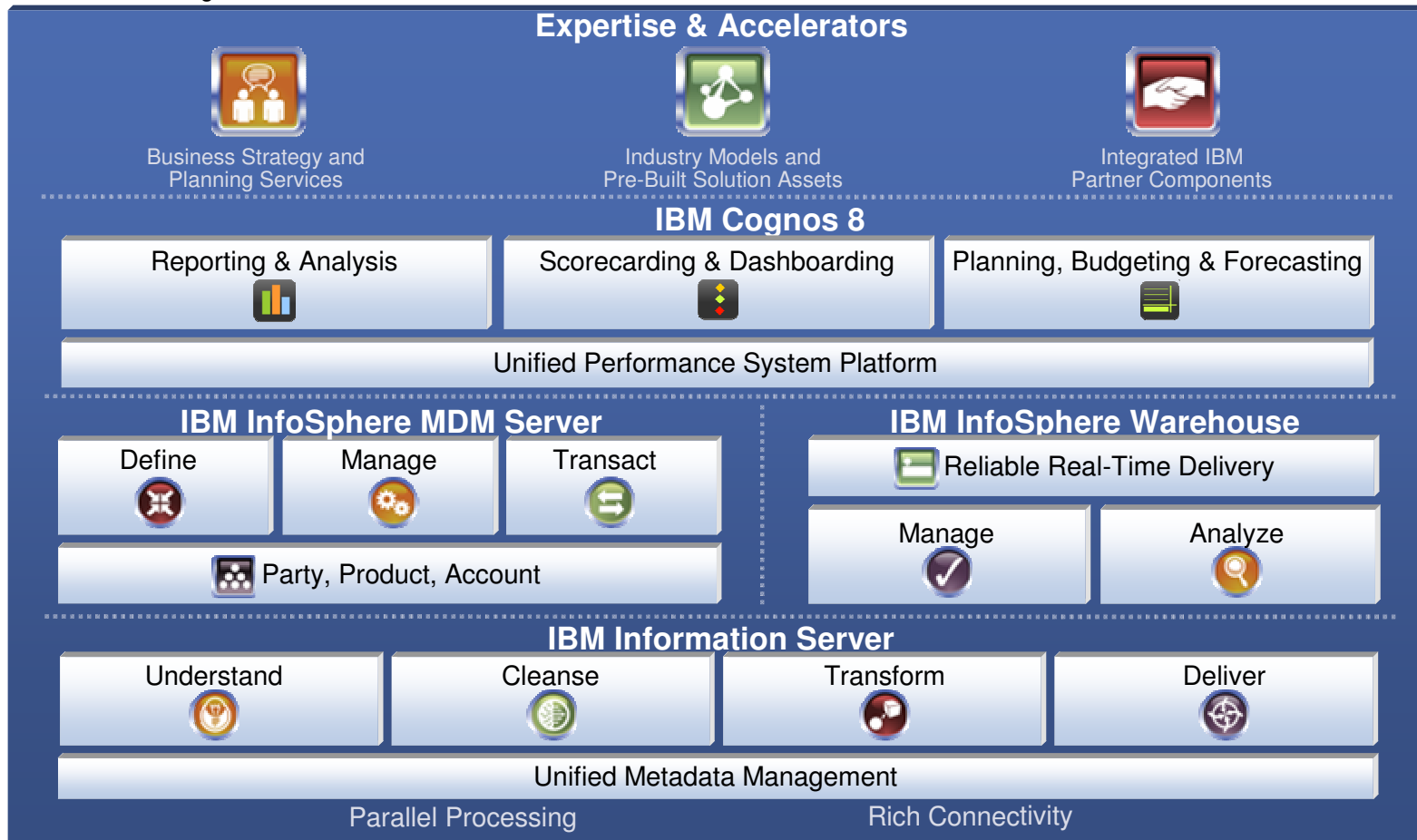


Telco



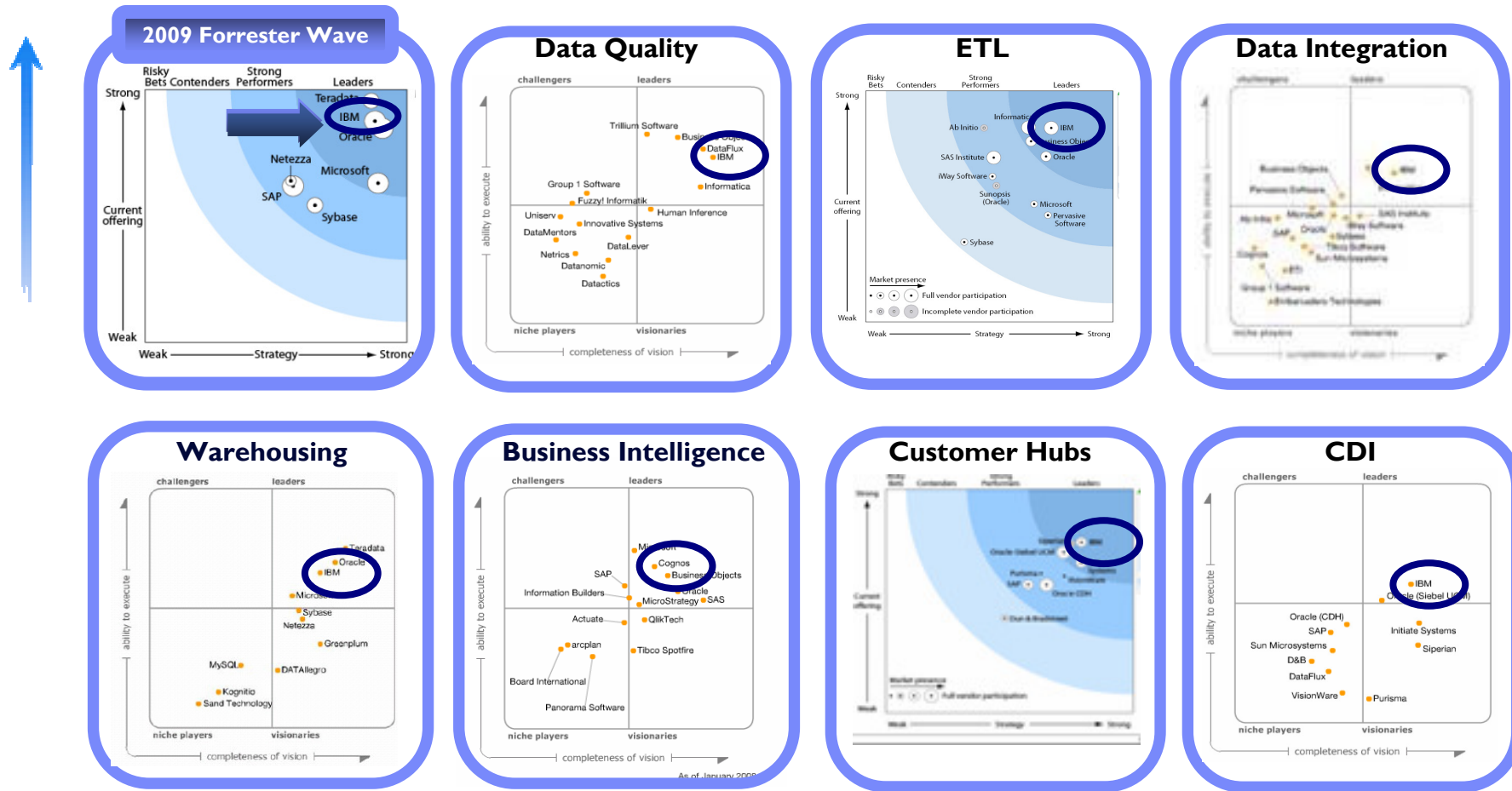
Public Sector

Publish		Metadata
Model		
Master	DW	
Capture	Integrate	
Sources		

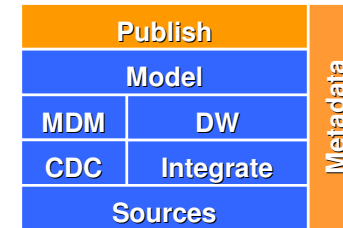


Analysts Recognize IBM Leadership

The Only Recognized Best Of Breed Portfolio Across Entire Information Value Chain



Reporting, Analysis, Dashboards, Scorecards
 We use Cognos 8 to illustrate a simple Fraud Reporting Scenario

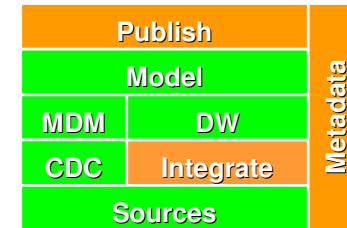


- ‘Events’ are reported
- Fraud Investigation unit can analyse suspicious events
- At High or Low level
 - Drill Down into detail as necessary
- Data Definitions available in Metadata / Glossary
 - E.g. for Fraud Types – see dictionary
- We’ll track through simple example and show what kind of support is being given under the surface

The image displays three main components of the Cognos 8 environment:

- Operational Dashboard:** A collection of visual reports including a gauge chart for 'Business Growth Attainment Year-to-Date' (50.00% vs 100% Target), a 3D bar chart for 'Sales by Region' (US West, US East, US Mid), a bar chart for 'Profitability Rating Monthly', a 3D bar chart for 'Sales by Product and Country', and a bar chart for 'Gross Margin by Segment' comparing Actual, Budget, and Attainment.
- Query Studio:** A tool for creating and running queries, showing a list of tables and columns in the left pane.
- IBM Metadata Workbench:** A tool for viewing data lineage, showing the flow of data from source tables through various stages (DataStage, CDC, etc.) to target tables.

Before I can act I need to know “Can I Trust the Data?”. Here we see how we can know what is behind the data

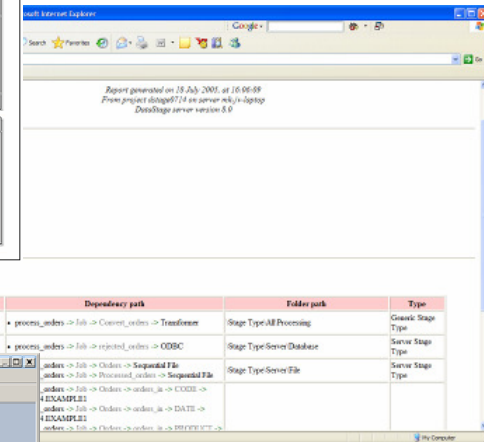


- **Understand the Meaning of data – Business Glossary**
- **Looking at the *Lineage* of data**
 - Where it came from?
 - What’s been done to it?
- **We find a ‘Job abort’**
 - From Operational metadata
- **Ops issue, or suspicious ?**
- **Able to make *informed* choice about trusting this data**
- **Can also be confident of all aspects of the Data Quality**
- **Primary components **supply** metadata: Publish, Metadata, Integrate**
- **All components **contribute** input**

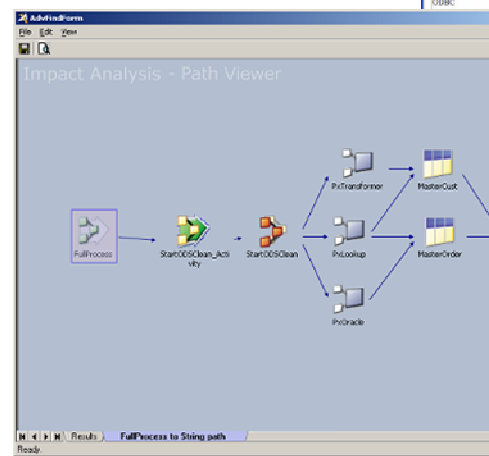
Report



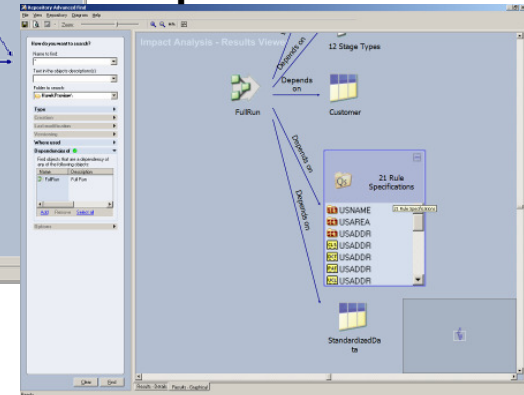
HTML View



Path View



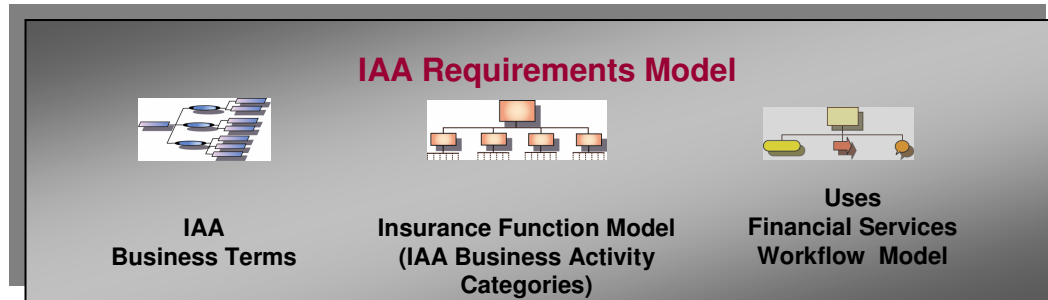
Graphical Tree View



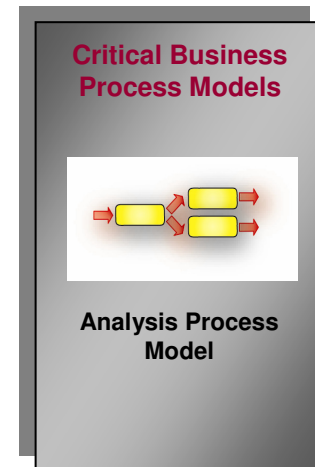
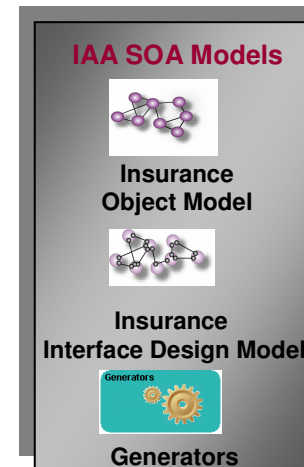
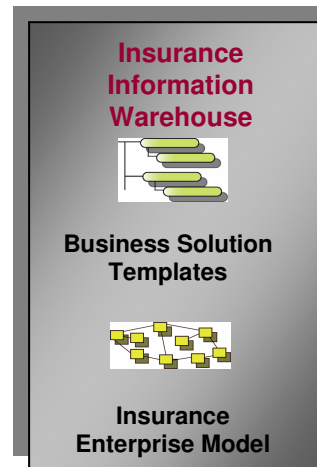
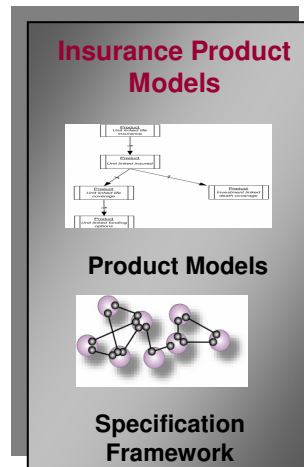
All analytical systems need to organise the data to be reported upon. We have multiple *Enterprise Data Models* available

Publish		Metadata
Model		
MDM	DW	
CDC	Integrate	
Sources		

- **Pre-built Data Models**
- **Multiple Industries**
 - Insurance
 - Banking
 - Retail
 - Telco
 - Healthcare

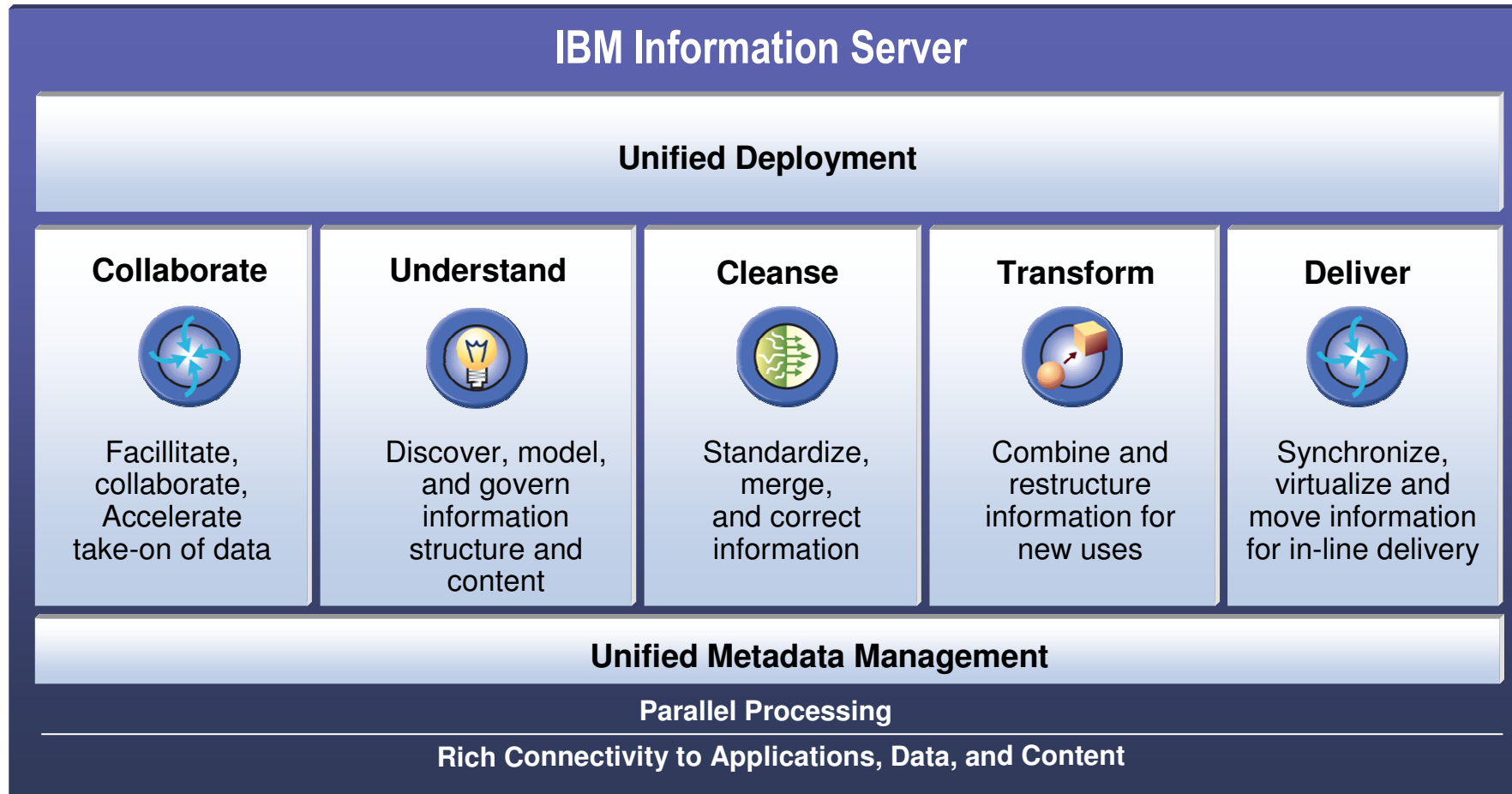


- **Reduces**
 - Risk, Time, Effort, Cost
- **Built in support for common industry issues**
 - Solvency II
 - SOX
 - Basel II
 - IAS



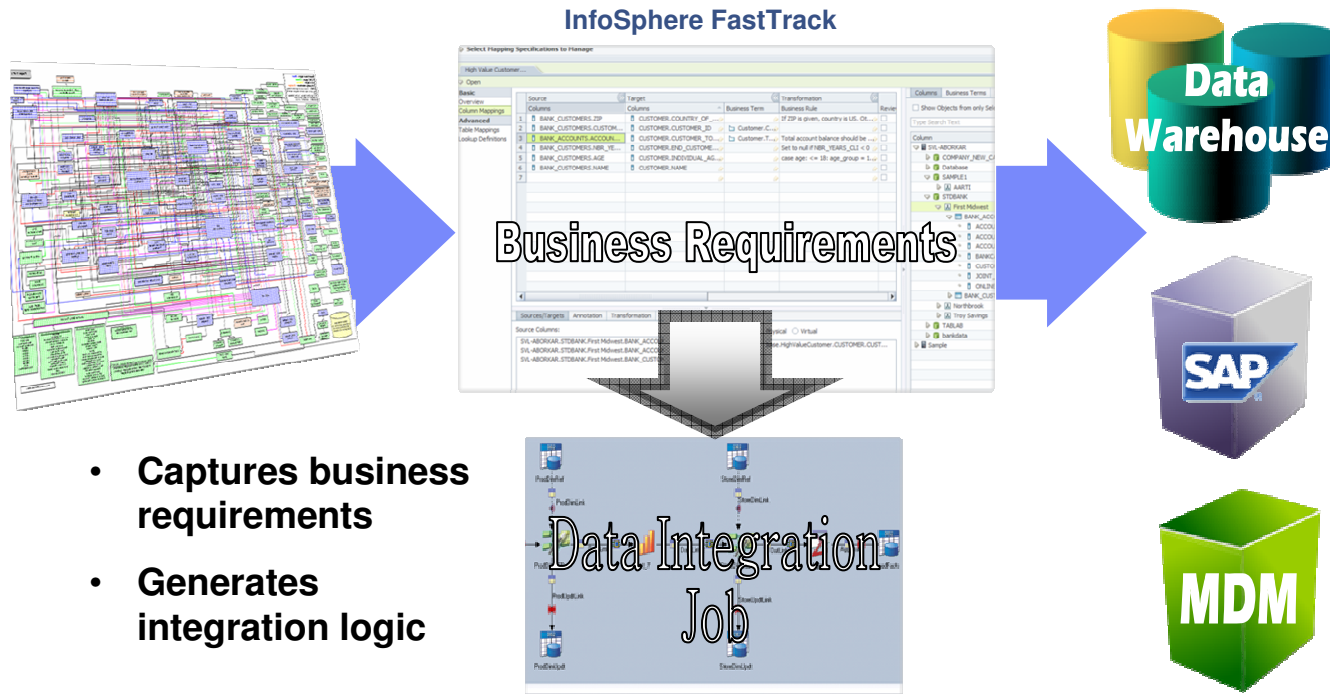
We need to obtain, understand, transform and quality assure data, and use these capabilities in concert; this is the purpose of Information Server

Publish		Metadata
Model		
MDM	DW	
CDC	Integrate	
Sources		



Bringing IT and Business Together.
FastTrack, part of Information Server helps IT and Business personnel collaborate and speeds the process of using new data

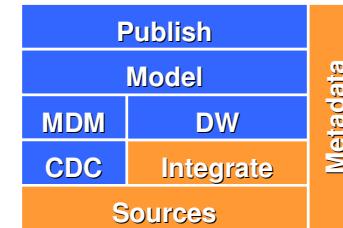
Publish		Metadata
Model		
MDM	DW	
CDC	Integrate	
Sources		



- Captures business requirements
- Generates integration logic

- Help with migrating new data into the system
- Uses Business Terminology and Data Model definitions
- Identify candidate source to target mappings
- Component used : Information Server FastTrack

Once FastTrack has helped IT and Business personnel collaborate in understanding and defining new data it can *automatically generate* the jobs needed to extract, transform and load it into the system



- Central Shared Repository
- ‘Excel-like’ interface
- Automatic generation of transformation jobs
- Direct access to metadata
- Complex transforms possible
- Ideal project progress tracking tool
- High Volumes of data can be supported
- Common package support, SAP, Oracle, Infor etc
- Benefits
 - Much quicker > 2x
 - Less effort – 50%
 - Reduced errors
 - Reduced risk

Define mapping specification with business rules and terms

Mapping Specification
Statistics Summary

Project: WarehouseMappings
Report Name: Mapping Statistics Summary
Report Generated: 2009-06-29 12:06:16
User: lradmin@radmin
Description: mapping statistics summary
Mapping Specification Name: Mapping_Demonstration
Owner:
Status: In Progress

Mapping Specification Description:
Maps the ACCOUNT.csv input data file to the staging table.

Percent Mapped	Percent Reviewed	Percent Validated
86% (Mapped: 14%, Not Mapped: 86%)	100% (Reviewed: 0%, Not Reviewed: 100%)	88% (Validated: 12%, Not Validated: 88%)

Source Tables	Count	Percent
FileServer DataFiles\IN\ACCOUNT_csv	12 of 15 columns	86%
Total	13 of 15 columns	86%

Target Tables	Count	Percent
Warehouse LMPOC STAGING ACCOUNT	15 of 15 columns	100%
Total	15 of 15 columns	100%

Candidate Terms

Source

Target

Transformations

Business Rules

Functions

Other

Unpublished Relationships

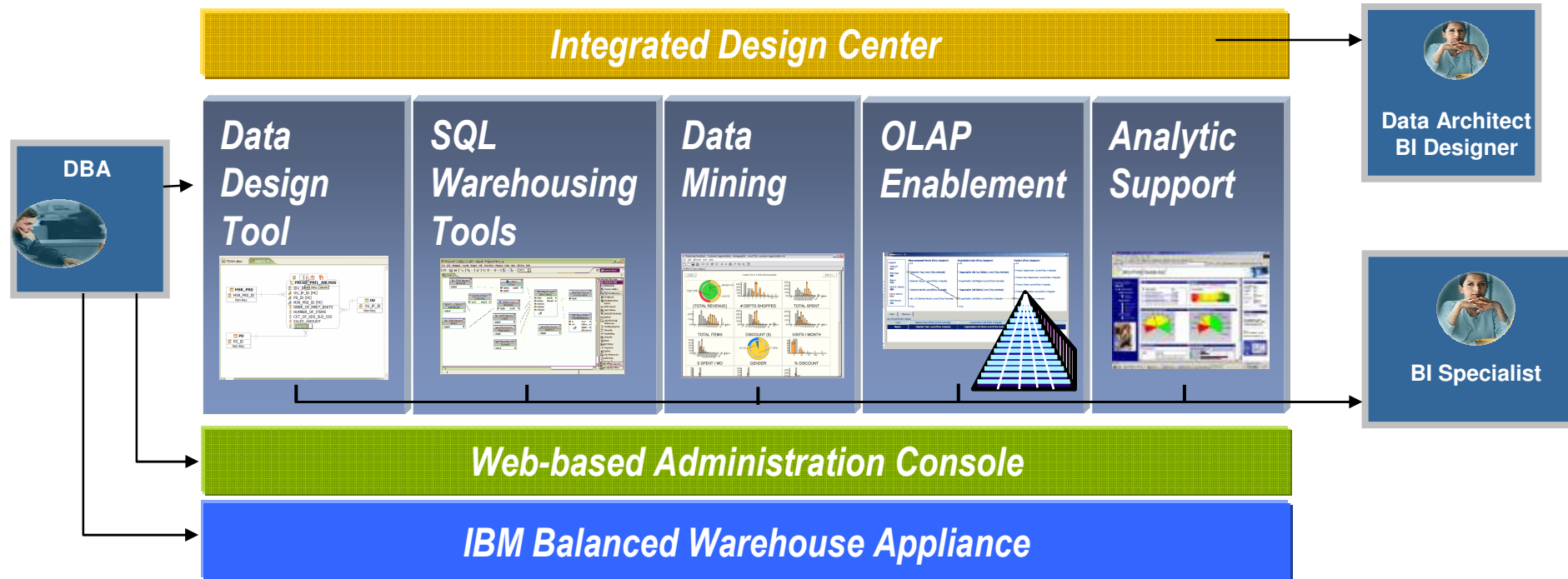
Flexible reporting and tracking

Auto-generate DataStage jobs

The IBM Balanced Warehouse Appliance. The central repository for all data within the InfoSphere Data Architecture.

Scalable, Powerful, Integrated Tooling, Low Cost

Publish		Metadata
Model		
MDM	DW	
CDC	Integrate	
Sources		



• **Tools Accessible from Cognos**

- Data Design
- **Data Mining** (segmentation, market basket analysis etc)
- **Cubing Services**, MQ Integration, Federated Access*

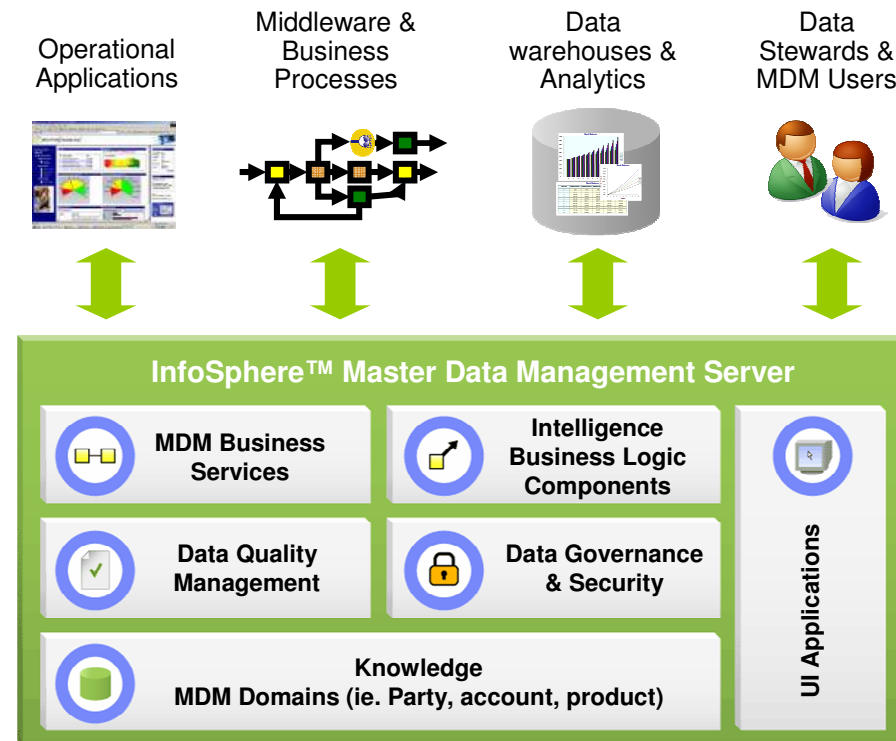
• **Data Warehouse Appliance**

- Scalable parallel processing, 250Gb to 100's of Tb
- Ease of design, install and administration
- Market leading pricing

IBM InfoSphere Master Data Management

Publish		Metadata
Model		
MDM	DW	
CDC	Integrate	
Sources		

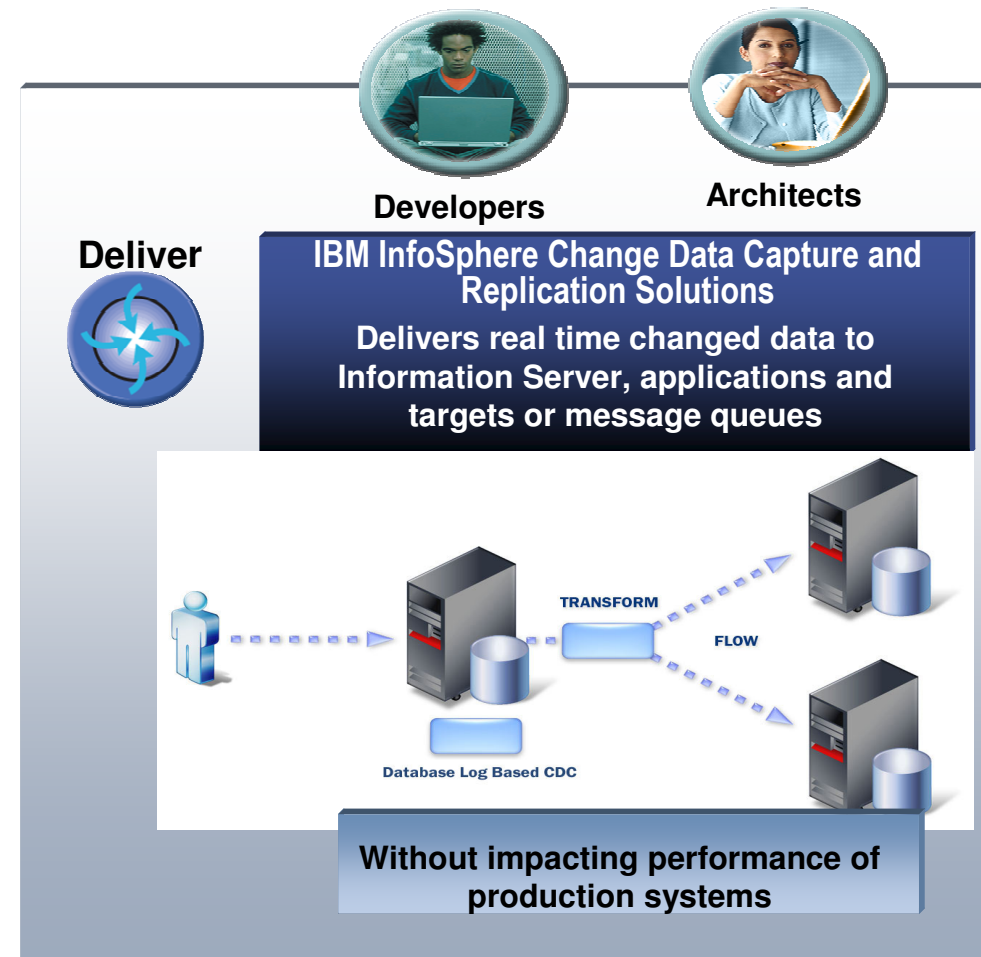
- **The first multi-domain, multi-function MDM capability in the market**
- **First Multi-Role and Responsibility Based**
 - User Interface Generator
- **Packaged to address all types of MDM implementations**
 - From small entry-level projects through to strategic transaction-hub deployments
 - Allows clients to grow as required by implementing existing functionality
 - Significantly lowers client risk and time/cost to implement
- **SOA Library - 800 pre-packaged business services**
 - Significant out of the box product functionality
 - Reduces total cost of ownership
- **Performance & scalability**



InfoSphere CDC (Change Data Capture) enables the real time capture of data with low impact on existing infrastructure from multiple Databases & Hardware platforms

Publish		Metadata
Model		
MDM	DW	
CDC	Integrate	
Sources		

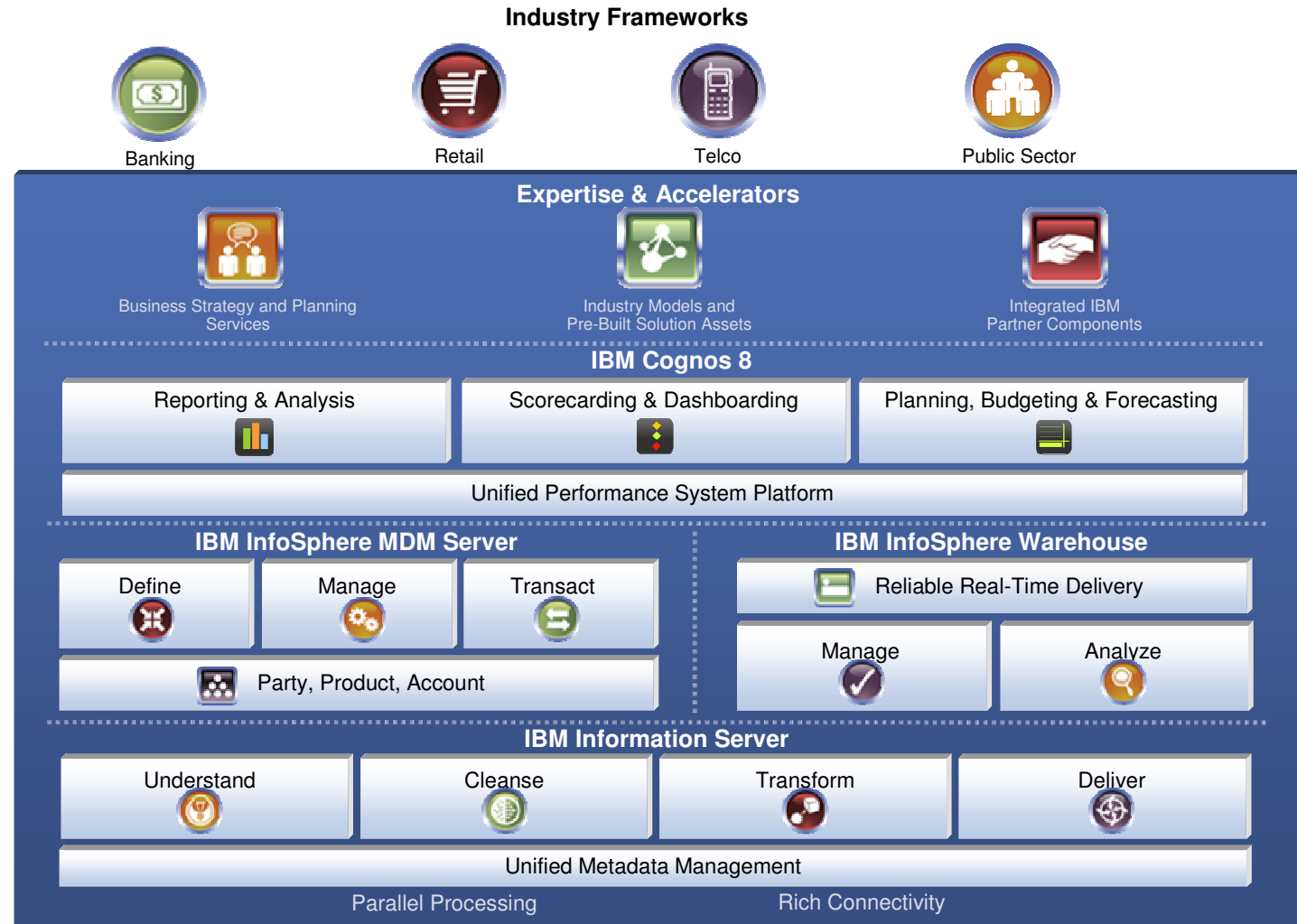
- Captures changes real-time DATA direct from the database logs
- Supports natively DB2/SQL/Oracle/Informix & Sybase
- Low resource impact on existing hardware
- NO Application impact
- REAL time mirroring or mix and match to suit the business needs
- VERY short Implementation projects achieving beneficial ROI's
- FULLY integrated into InfoSphere portfolio and metadata
- Simple way of making data available to DW, MDM, Information Server, Cognos – with full metadata
- Speed of Implementation
 - Install in an hour
 - Choose data and be receiving it within hours
 - Project 2-10 days



Example Customer Benefits Achieved with CDC

- Cost savings of \$400,000, reduced the monthly and quarterly financial reporting cycle by 80%
- Improved on-time delivery of orders by more than 10% and the number of late orders has dropped by 80%.
- Deliver sales analysis up to 400% faster and with more confidence.
- Reduced batch window by 70%.
- By enabling a separate reporting system improved both operations and reporting, increasing their bottom line and improving customer service.
- One customer reduced its overall IT spending by nearly 20% by implementing InfoSphere CDC

In summary, InfoSphere provides Infrastructure support for all of the common information problems in an integrated stack



Comments: Cognos + IBM

“Cognos users would get access to a much more solid infrastructure, middleware and data service. IBM would get a well-branded BI and performance management product set”

“The combination of IBM Information Server, MDM Server and the DB2 Warehouse infrastructure as a foundation for Cognos and its analytical and visualization layer is a strong entry in the market”

“Through the acquisition, the product sets of the two vendors show only insignificant overlap and constitute a good fit”

“In the BI and performance management markets, IBM Software Group is now going into a head-to-head battle with SAP and Oracle, almost leapfrogging over them”

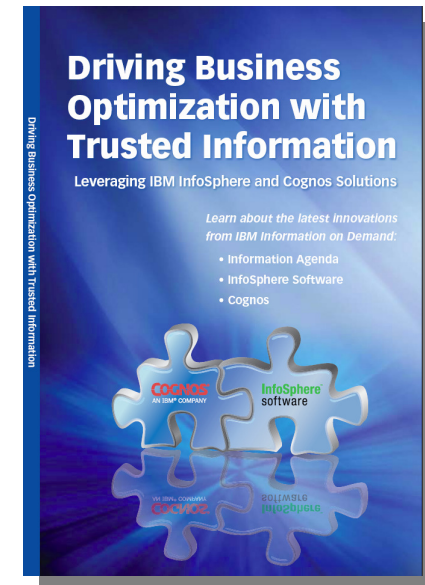
“IBM's data management infrastructure is superior to Oracle's and SAP's offerings, and more importantly, IBM does not need to integrate Cognos with any other BI platform”

IBM Aims for the Business Intelligence Endgame With Cognos
Andreas Bitterer, David W. Cearley
Gartner Research
16 November 2007 ID Number: G00153478

Following this session

- **We're happy to talk more about the InfoSphere stack – come and see us afterwards**
- **Re-runs of this demo**
- **Plus – the 'JK Insurance' Flash Demo**
 - JK Financial assesses credit risk exposure and seamlessly integrate various business and IT functions.
 - http://www-01.ibm.com/software/info/television/index.jsp?cat=clients_software_info&media=video&item=xml/L135107Q57342C89.xml
- **Also copies of the Cognos / InfoSphere Book**
 - 100 pages
 - The complete end to end story
 - Easy to read and for reference – great 'train and plane' reading

Publish		Metadata
Model		
MDM	DW	
CDC	Integrate	
Sources		



UK Information On Demand Conference – 17th September

<http://www-01.ibm.com/software/uk/itsolutions/information-management/events/>

United Kingdom [change]

Home Solutions Services Products Support & downloads My IBM Welcome [IBM Sign in] [Register]

IT solutions > Information management >

Information management events

Information management
 Information Foundation
 Information Transformation
 Information Intelligence
 Events
 Viewpoint

Related links

- IBM IT Solutions homepage
- Information management software products

Let IBM help you make the most of your IT investments - register now for our free workshops. Come meet us and find out how we can help your organisation.

IBM hosted events Non-IBM hosted events Online events Past events

UK Information on Demand Conference

UK Information on Demand Conference
Date: 17 September 2009

This conference for senior IT professionals aims to help you consolidate and gain a better understanding of the information you already have. It's packed with valuable insights, the latest case studies, breakout sessions featuring industry-specific analyses and technical demos showcasing the latest solutions. Taken together, they ensure you walk away with a deeper understanding of how to create and optimise your own unique information management strategy. This, in turn, can help enhance the overall performance of your organisation.

[See for yourself \(US\)](#) how our innovative principles allow companies to turn raw information into a trusted strategic asset - visit again in June when registration for this event opens.

In the meantime, see what happened at our [UK Information on Demand conference](#) last year.

We're here to help
 Easy ways to get the answers you need.
 E-mail IBM
 Or call us at:
 01475 898688

Browse more events
 → See all IT solutions events

E-mail this page Print this page Digg this Save to del.icio.us

About IBM Privacy Contact Terms of use IBM Feeds

InfoSphere Warehouse Introduction Proof of Technology

Dates: 16 July, 23 September, 7 October, 10 November, 9 December 2009
Time: 9:30 AM – 4:30 PM
Location: IBM Hursley, Hampshire

Significant business benefit is obtained from providing timely and relevant data analysis.

Come and see how InfoSphere Warehouse enables you to achieve more benefits sooner thus increasing your return on investment.

Proof of Technology days are classroom based events where you can gain practical experience of IBM technology and how it can help you.

Attend this event to learn how you can use InfoSphere Warehouse to:

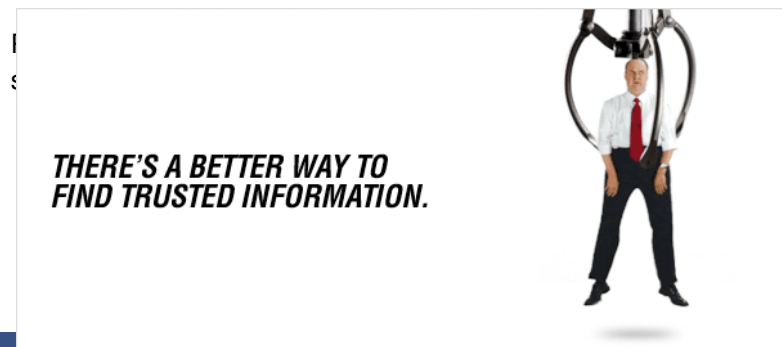
- See how the tooling enables you to reduce the time to value for warehousing projects
- Design and deploy warehouse solutions via a single design interface
- Utilise the built-in physical data modelling capabilities
- Use the powerful data transformation capabilities to pull data from multiple sources into the warehouse
- Design and build OLAP reporting structures for your users providing enhanced sharing performance and scalability
- Understand how to use the built-in data mining and text analytics features that enable you to get more value out of your data

Who Should Attend?

- Business Analysts and Decision makers**
- Data Warehouse and Business Intelligence developers**
- Data Architects and Analysts**
- Database and Data Warehouse Administrators.**

Agenda

- An introduction to data warehousing and overview of InfoSphere Warehouse**
- Hands on exercises**
- Demonstration showing how to discover hidden facts in your business**
- Other considerations and tools**



Publish		Metadata
Model		
MDM	DW	
CDC	Integrate	
Sources		

Thank You